

# **PROVIA Guidance on assessing climate change vulnerability, impacts and adaptation (VIA)**

Katharine Vincent

Kulima Integrated Development Solutions

# What is PROVIA?

- Theme 1: International research agenda
- Theme 2: Advice and scientific information
- Theme 3: Communication with the research community
- Theme 4: Guidance and assessment tools
  - Aim is to improve the robustness and rigour of climate change vulnerability, impact and adaptation assessments – particular applicability to NAPs

# Status of the guidance documentation

- Draft outline agreed at expert kick off meeting in late 2011
- Initial draft produced for discussion at March 2012 Planet under Pressure conference
- Final draft published on website in and review comments invited by August 2013
- [http://www.unep.org/provia/Portals/24128/PROVIA\\_Draft\\_Guidance\\_on\\_Assessing\\_VIA-For\\_Review.pdf](http://www.unep.org/provia/Portals/24128/PROVIA_Draft_Guidance_on_Assessing_VIA-For_Review.pdf)
- Revisions taken place – finalisation soon

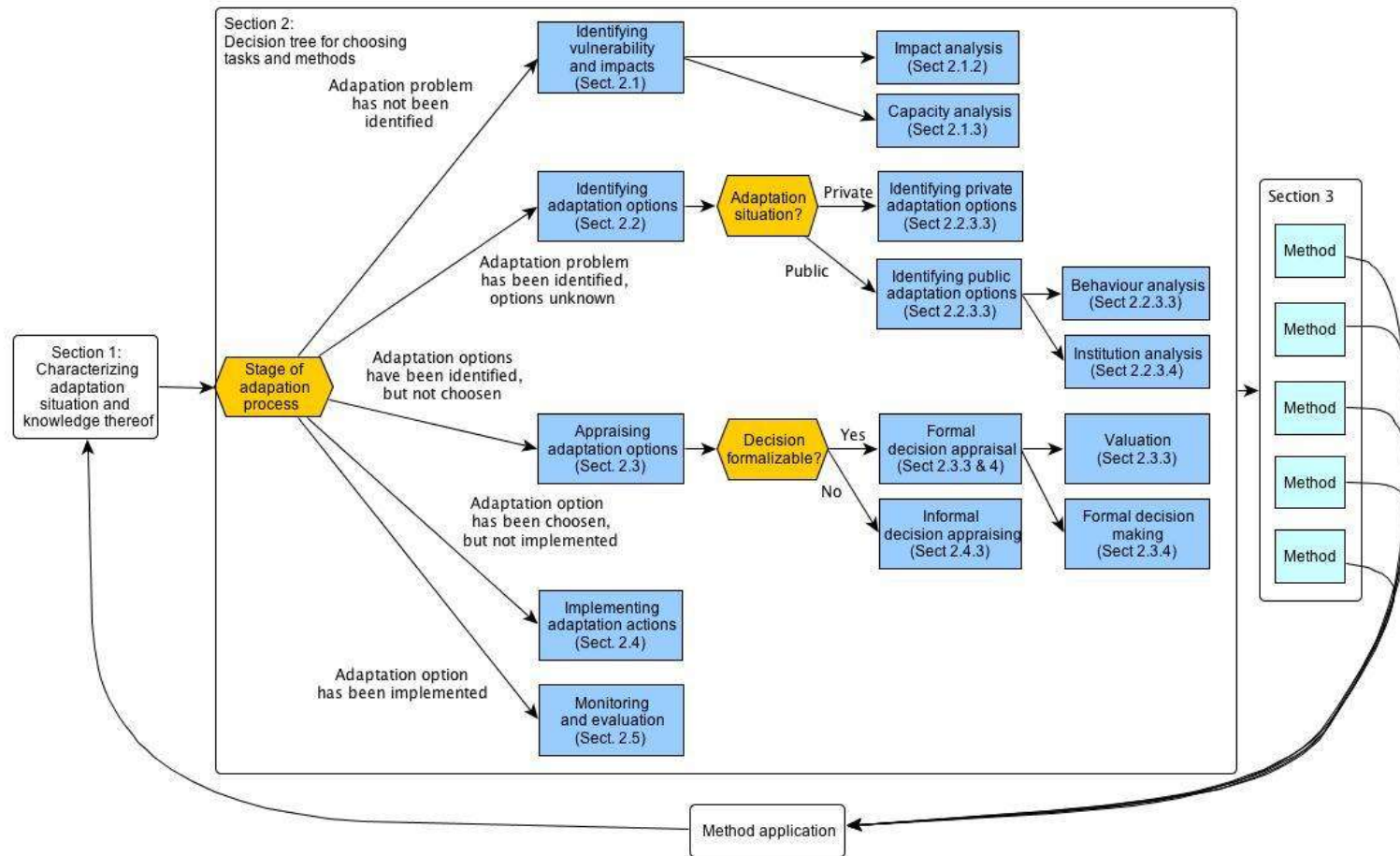
# What the guidance does

- Provides methodological guidance on assessing climate change VIA and on implementing, monitoring and evaluating adaptation
- Presents a novel approach to integrating various existing methods into a coherent framework

# Structure of the guidance

- The “Adaptation Learning Cycle”
  - i) identifying vulnerability and impacts
  - ii) identifying adaptation options
  - iii) appraising adaptation options
  - iv) planning and implementing adaptation
  - v) monitoring and evaluation
- Stakeholder consultation and participation encouraged at all stages

# Decision tree illustrating the Adaptation Learning Cycle



# Identifying vulnerability and impacts

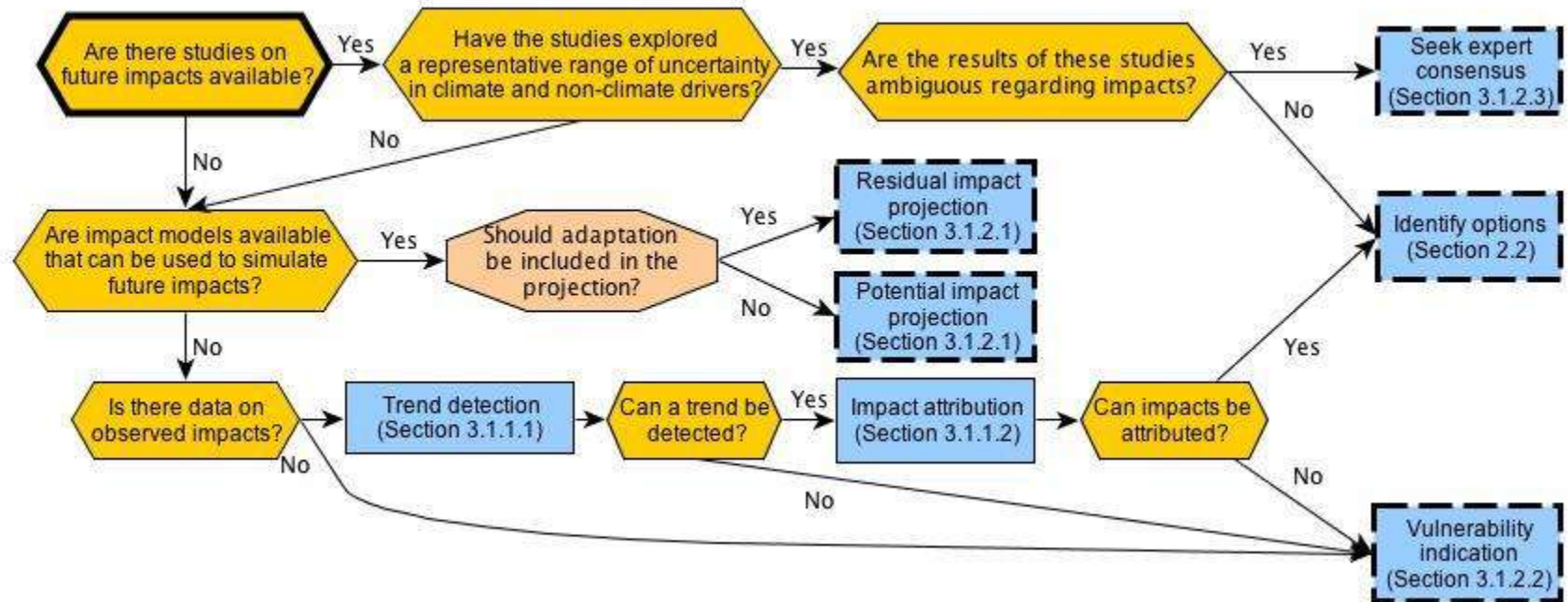
- Entry point: climate change is a concern and you are considering whether and how to adapt
- Goal: to gain more knowledge about the risks and opportunities faced in the adaptation situation
  - **Analysing** observed or expected **impacts** of climate change (with and without adaptation) (impact-analytical)
  - **Analysing** the **capacity** to prevent, moderate or adapt to these impacts (indicators, behaviour-analytical and institution-analytical ones)

# Structure A: By task

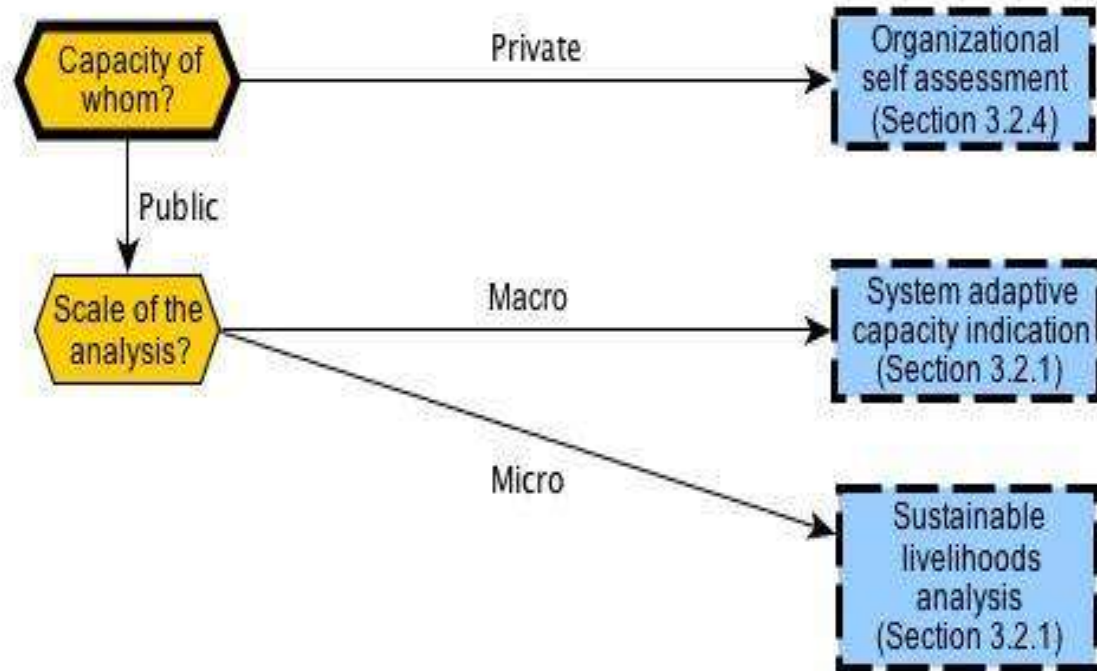
	Private individual	Private collective	Public individual	Public collective
<b>Identifying vulnerability and impacts</b>	Impact analytical methods	Impact analytical methods, capacity self assessment methods	Impact analytical methods, adaptive capacity indicators	Impact analytical methods, adaptive capacity indicators
<b>Identifying adaptation options</b>	N/a	Capacity self assessment methods, Institutional analysis	Capacity analysis, behavioural analysis	Capacity analysis, institutional analysis
<b>Appraising adaptation options</b>	Decision-analytical methods	Formal decision making methods, valuation methods, informal decision making methods	Formal decision making methods, valuation methods	Formal decision making methods, valuation methods, informal decision making methods
<b>Planning and implementing adaptation actions</b>	N/a	Organisational capacity building methods	Stakeholder engagement methods	Stakeholder engagement methods, Scoping and planning methods and tools
<b>Monitoring and evaluation</b>	N/a	Participatory monitoring and evaluation	Monitoring and evaluation frameworks	Participatory monitoring and evaluation, Monitoring and evaluation frameworks



# Impact-analytical decision-tree



# Capacity-analytical decision-tree



# Structure B: By method

- Characterising impacts
  - Detection and attribution of observed impacts (statistical methods)
  - Modelling and indication of future impacts (scenarios and model-based projections, both biophysical and socio-economic)

# Structure B: By method

- Vulnerability indication
  - Indicators
  - Knowledge elicitation
    - community vulnerability assessments
    - Expert judgement
    - Participatory scenario development
    - User-controlled learning tools

# Structure B: By method

- Characterising capacity
  - Indicators
    - National
    - Local
  - Behavioural analysis
    - Social-psychological
    - Maximisation
  - Institutional analysis
    - Governance (description and design)

**Summary of indicative/ launched adaptation measures in Finnish fisheries and their preliminary timing:**

**\*2005–2010,  
\*\*2010–2030,  
\*\*\*2030–2080.**

**Source: Ministry of Agriculture and Forestry (2009).**

		Anticipatory (A)/Reactive (R)	Measures launched
Public	Administration and planning	• Improvement of monitoring in order to assess the state of fish stocks, and development of cooperation between different parties* (A)	• Climate change into account in the overhaul of the Fishing Act. Test fishing register established for monitoring the management of waters facilitates to follow-up of fish stocks.
		• Prevention of water pollution, fishing pressure and the deterioration of fish habitats* (A)	• Carried out as part of the regular planning of measures.
	Research and information	• Assessment of the ability of different species and age groups to adapt to the impacts of climate change* (A)	• ISTO research project <sup>7</sup> launched in 2009.
		• Investigation of interdependencies between species and ecosystems* (A)	
		• Monitoring the development of the sector* (A)	
	Normative framework	• Consideration of the locations of new fish farming facilities with regard to climate change* (A)	
Private		• Regulation of waters and diversion at power plants* (A)	• Support for the construction of passes for fish.
		• Increasing buffer zones around small waters* (A)	
		• Coordination of the temperature cycles important to the life cycle of fish at fish farming facilities to match natural cycles* (A)	
		• Investments in aeration and oxygenation equipment at fish farming facilities* (A)	
		• Change in fishing practices (for example, partial replacement of ice-fishing with open water fishing)*** (R)	• Changes in fishing practices taken into account in the overhaul of the Fishing Act and activity of the organisations.
		• Increased purification of discharge water from fish farming facilities in order to reduce feed and excrement* (R)	

<sup>7</sup> Research project of the Finnish Game and Fisheries Research Institute FGFRI launched under the Climate Change Adaptation Research Programme ISTO: Changes in Finnish fish fauna, fish stocks and alien species in climate change.

