

Tool Fact Sheet Appendix - Generic Component Trees

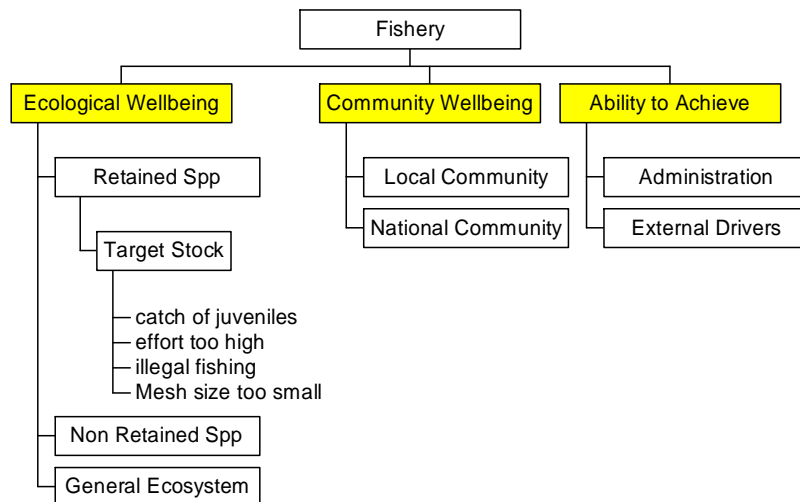


Figure 1 –The high level EAF component tree- each of these components has its own generic component tree presented below.

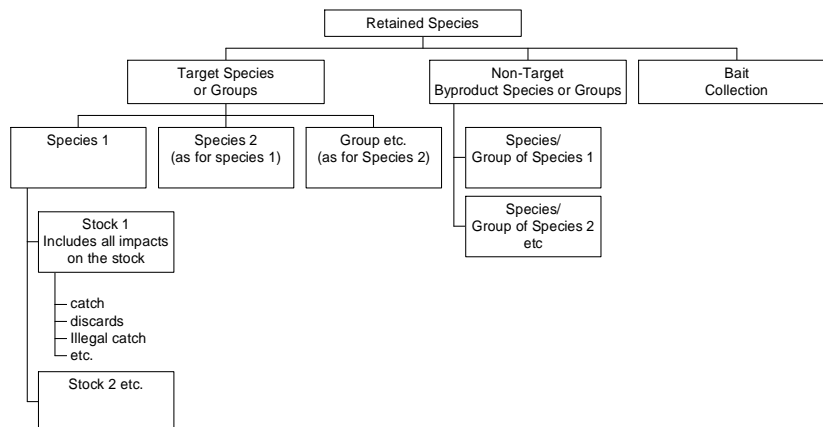


Figure 2: The starting generic component tree for the **Retained Species** component. Note each of the box components in this tree are ecological 'assets.' Any potential threats/impacts can be listed under the relevant asset.

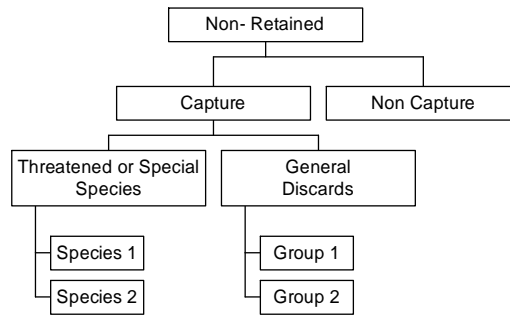


Figure 3: The starting generic component tree for **Non- Retained/ Discard Species**. Note each of the components in this tree are ecological 'assets.' They can often be groups rather than just species.

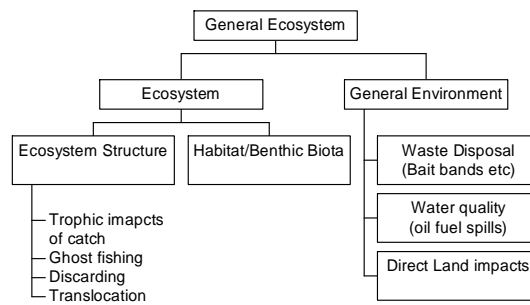


Figure 4: Starting generic component tree for the **General Ecosystem**. The two main components in the ecosystem structure branch are the ecological assets, with some of the possible impacts on these assets listed.

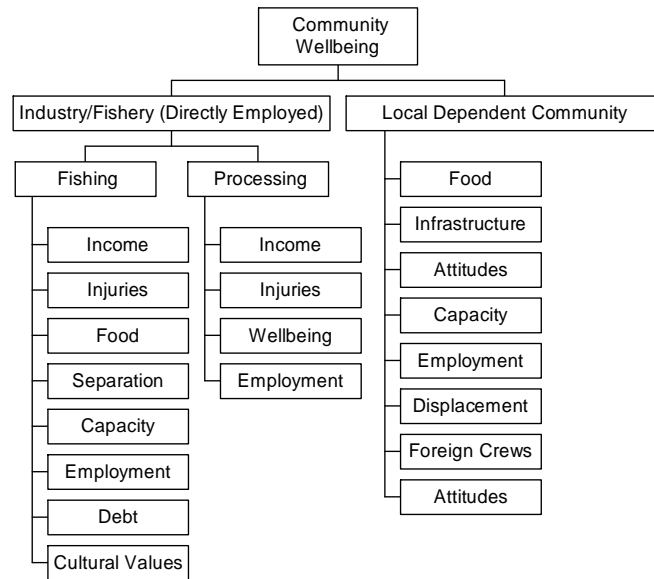


Figure 5: Starting generic component tree for the **Community well-being** component. Note each of the components in this tree can be considered community 'outcomes'.

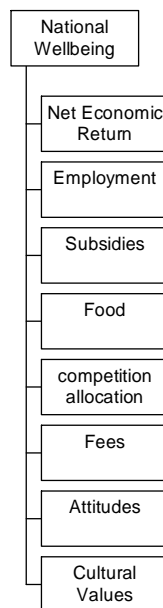


Figure 6: Starting generic component tree for the national **well-being** component. Note each of the components in this tree can be considered 'outcomes'.

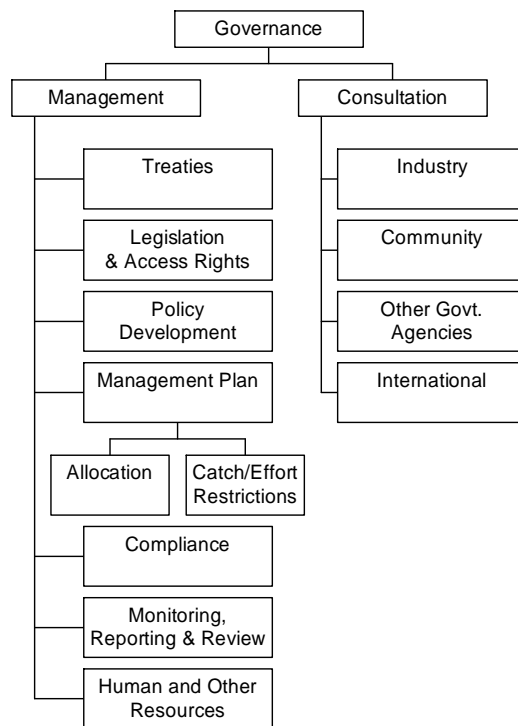


Figure 7: Starting generic component tree for the **Governance/Administration** component. Note each of the components in this tree can be considered 'systems'.

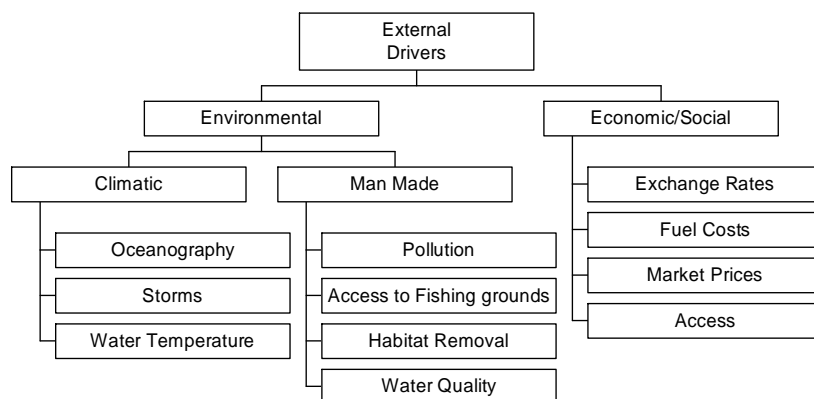


Figure 8: The starting generic component tree for the **External Driver** component. Note each of the components in this tree can be considered 'drivers'.