



The EU Data Collection Framework (DCF)

**Workshop WECAFC Data Collection
Barbados January 2016**



Antonio Cervantes
European Commission
Directorate General for Maritime Affairs and Fisheries



The EU Data Collection Framework (DCF)

- *Background, Objectives and Scope*
- *Structure*
- *Financing*
- *Data covered and their collection*
- *Procedures*
- *Data base feasibility study*
- *New CFP= New challenges*
- *WECAFC stocks*



The major challenges fisheries face nowadays...:

- *Risk of collapse of some stocks*
- *Impact on marine ecosystems*
- *Economic losses for the fishery system*
- *Fisheries resources supply for the EU markets*

...tackling simultaneously all these issues requires.....

... Sound data, for sound scientific advice to better implement the EU Common Fishery Policy

But nothing is magic and it was necessary to develop, adopt and enforce a dedicated system to collect the necessary information



Before the 1990's...



From 1990 to 1999...

Cooperative studies involving several Member states on data collection methods, surveys at sea, socio economic aspects, environmental issues....





DCF: Initial Objectives

- *First adopted in 2000, operational as from 2001:*
 - *Implement a routine and systematic collection of the basic data needed for scientific analysis*
 - *Establish a standard, co-ordinated and harmonised cost/efficient Pan-European collection*
 - *Get Member States involved*



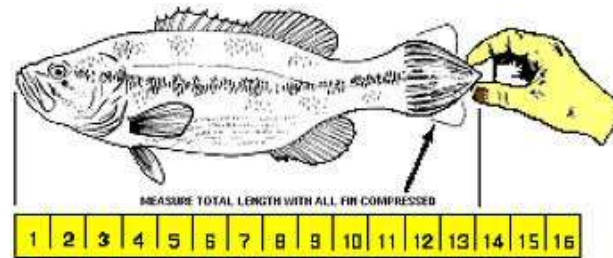
Scope

The DCF lays down rules concerning:

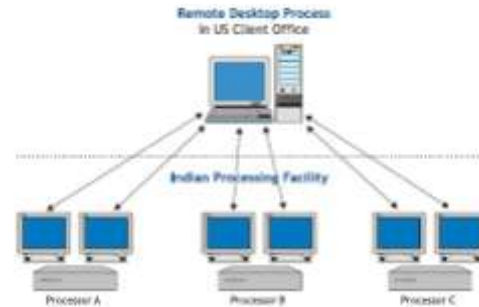
- *the collection and management, in the framework of multiannual programmes, of biological, technical, environmental and socio-economic data concerning the fisheries, aquaculture & processing sectors;*
- *the use of data concerning the fisheries sector in the framework of the Common Fisheries Policy, for the purpose of scientific analysis.*

What is the structure of this Framework?

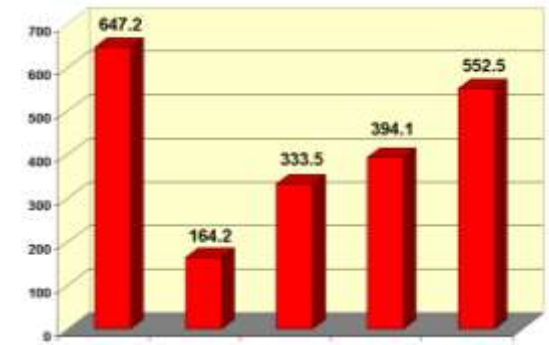
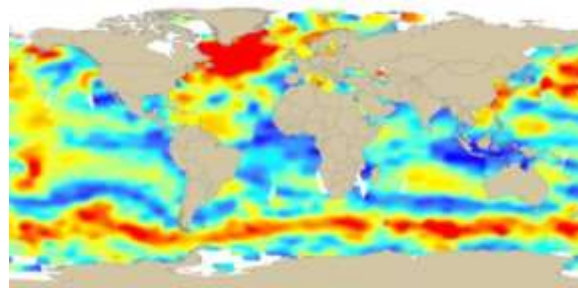
Data collection



Data management



*Data access
and use*





Financing of data collection

- *Data collection is eligible to 80% of EU co-financing (for eligible expenses) under the European Maritime and Fisheries Fund.*
- *520 M Euro available for data collection for 2014-2020*
- *Obligations to implement DCF irrespective of financial support by EU.*



Data covered

Categories	Types of variables	Sector covered
Biological data	<p>a) Quarterly length distribution of species and quarterly volume of discards</p> <p>Length, weight, sex, maturity, fecundity of individual fish.</p> <p>b) Quarterly estimates of catches</p>	<p>a) Commercial fish stocks – not all variables needed for all stocks. Variables collected either every year or every three years depending on stocks.</p> <p>b) Recreational fisheries (salmon, tuna, cod, eels, sharks)</p>
Socio-economic data	<p>Different categories of income and of costs, employment, size of the fleet or sector:</p>	<p>1. Fleet</p> <p>2. Aquaculture sector</p> <p>3. Processing sector</p>
Transversal or 'control' data	<p>a. Capacity (Number of vessels, GT, kW, vessel age)</p> <p>b. Effort (Number of vessels, Days at sea, Hours fished, Fishing days, kW*Fishing Days, GT * Fishing days, Number of trips , Number of rigs, Number of fishing operations, Number of hooks, Number of lines, Numbers of pots, traps, Soaking time)</p> <p>c. Landings (Value, Price and total weight)</p>	<p>Commercial fish stocks</p>

Main provisions of the DCF

- *Provisions on collection, management and transmission of data.*
- *MS to establish a Multiannual National Programme*

Sampling schemes:

- *scientific surveys*
- *harbour sampling of landings*
- *on board sampling by observers*
- *questionnaires (socio-economic data)...*





Procedures

MS to establish a Multiannual National Programme and coordinate through

i) Regional Coordination Meetings

- » *Baltic*
- » *North Sea*
- » *North Atlantic*
- » *Mediterranean & Black Sea*
- » *Long-distance fisheries*

ii) Planning Group for Economic Issues

MS to ensure access to sampling sites, protection of data, quality control, transmission of data to end-users.



Planning, Monitoring & Reporting

- » *Every year, Member States report on their delivery of the National Programme for the previous year.*
- » *Commission evaluates Member States' Annual Report (based on STECF evaluation).*
- » *Commission evaluates compliance of Member States with their obligation to transmit data to end-users.*



Data base feasibility study

Facts

- » *Data stored in several different databases (national, regional, different aggregation levels)*
- » *Several organizations involved*

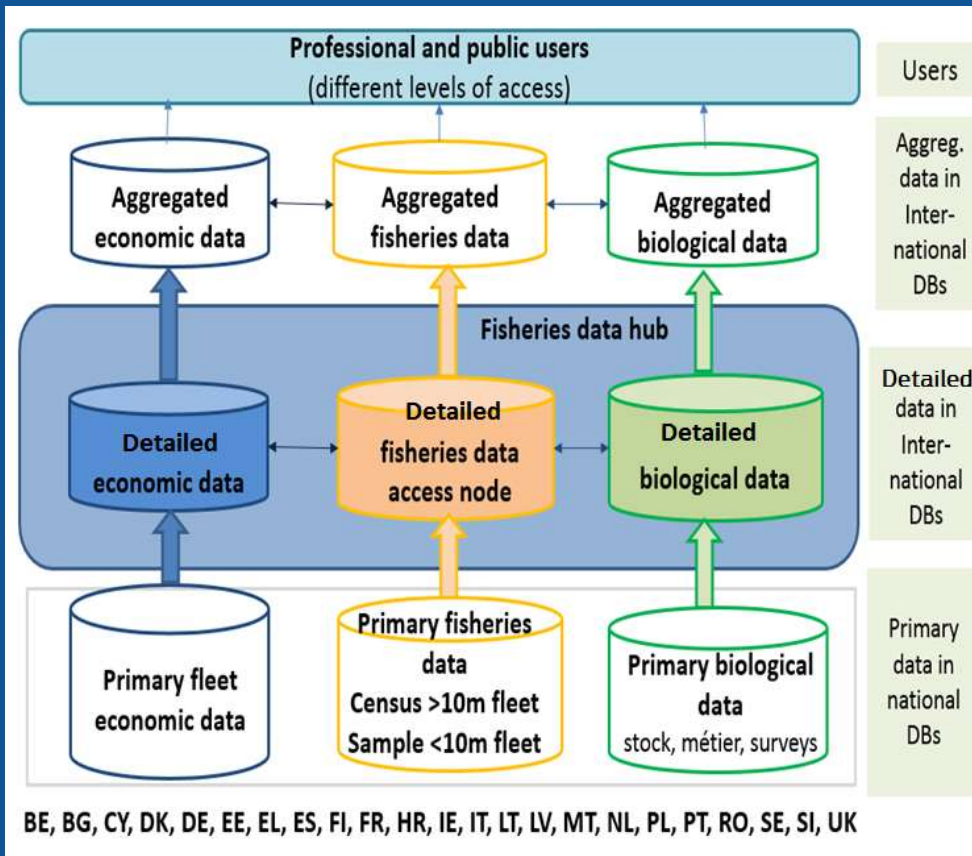
Problems

- » *1. Many data calls – time consuming*
- » *2. Overlaps by topic*
- » *3. Many overlaps with other EU regulations (ESTAT)*

Outcomes of the study

- 🕒 It allows to identify the principles and concrete ways to eliminate duplications in data flows and EU legislation as regards data on fisheries activity, aquaculture and processing*
- 🕒 The study provides a very good analysis of the interest to move from a "data push" to a "data pull" system*
- 🕒 It highlights some fundamental, horizontal principles for improving data transmission, availability and dissemination*

Sc. 4. FISHERIES DATA HUB



Thematic specialization

- Coordination within Hub
- All regions
- DBs by themes
- Functions by DB

Upload: from push to pull

Users: One point of access



New CFP= New DCF challenges

Impacts of fisheries/aquaculture on ecosystem

Effects of the landing obligation

Regionalisation in Regional coordination groups

Simplification: overlaps and duplications

*Improve Data Quality and **Availability***



WECAFC : priority stocks

Scientific name	Common name	Priority (High/Medium/Low)
Panulirus argus	Caribbean Spiny Lobster	High
Strombus gigas	Queen Conch	High
Shark-like Selachii, Rajidae	Sharks, rays & skates	High
Coryphaena hippurus	Dolphin fish	High
Acanthocybium solandri	Wahoo	High
Epinephelus guttatus	Red Hind	High
Lutjanus vivanus	Silk snapper	High
Lutjanus buccanella	Blackfin snapper	High
Lutjanus campechanus	Red snapper	High
Penaeus subtilis	Penaeus shrimp	High



Any questions?

Thank you for your attention