



Food and Agriculture  
Organization of the  
United Nations



# WECAFC-FIRMS Data workshop

## Jamaica

An overview on the  
Fisheries and Marine Resources inventory

*Issues, challenges and lessons learned focusing to data collection, data gaps and deficiencies,  
and capacity*

*Anginette Murray*

# Outline

## Day 1



- Profile of fisheries and marine resources for the country
- Brief overview for the focus fisheries
- Issues, Challenges & Lessons learned

# Profile of Jamaica

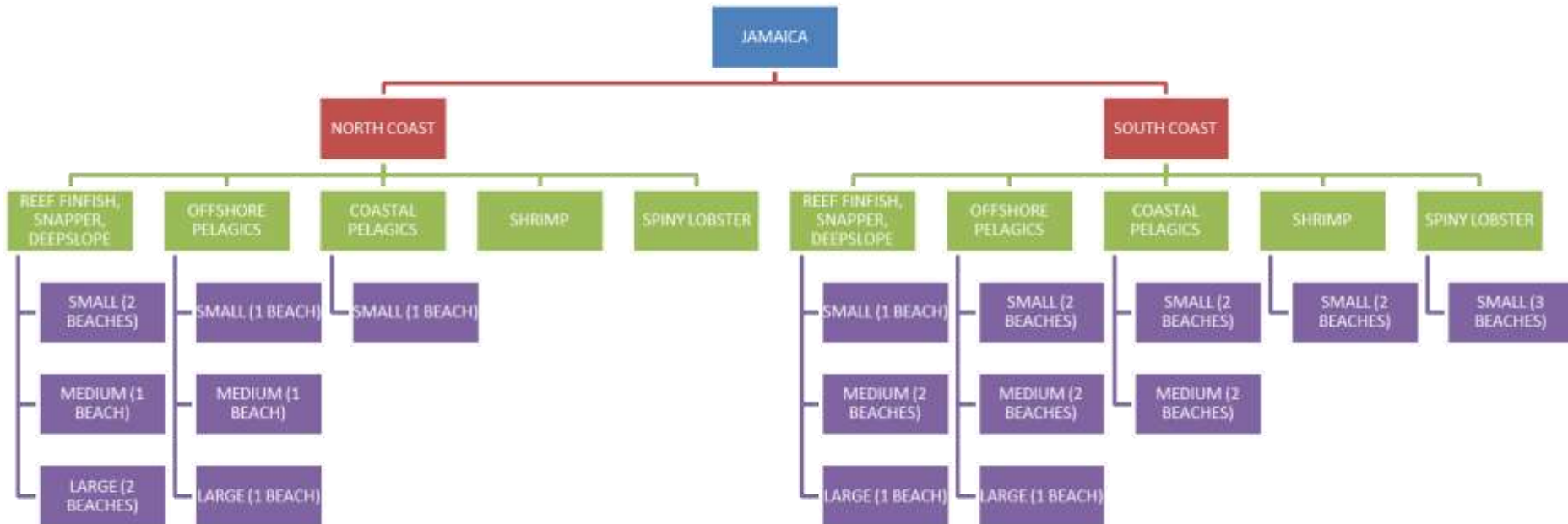
- Third largest island in the Caribbean
- Population 2.89 million
- Main Island: Total area is 10,991 km<sup>2</sup>, 236 km across, from 35 to 82 km wide
- EEZ: 274,000 km<sup>2</sup> (est.)
- Island shelf and proximal banks have a total area of 4,170 km<sup>2</sup> (1.5% of EEZ)
- Traditional industries: Mining, Tourism and Agriculture
- GDP Contribution 0.4%
- Export Value USD 8Mil, Import USD 104 Mil, 2012



# Fisheries of Jamaica

Features	Artisanal	Industrial	Riverine
Vessel Type			
Vessel Size	28ft	>80ft	
Gear	<ul style="list-style-type: none"> <li>• Nets</li> <li>• Pots</li> <li>• Diving</li> <li>• Hook and line</li> </ul>	<ul style="list-style-type: none"> <li>• Florida traps</li> <li>• Pots</li> <li>• Diving</li> </ul>	<ul style="list-style-type: none"> <li>• Nets</li> <li>• Hook and line</li> </ul>
Target Spp	<ol style="list-style-type: none"> <li>1. Conch</li> <li>2. Lobster</li> <li>3. Reef Fishes (parrotfishes, grunts)</li> <li>4. Deep slope (snappers)</li> <li>5. Coastal Pelagics (Atlantic Thread Herring)</li> <li>6. Offshore Pelagics (Tunas)</li> <li>7. Shrimp (Penaeid spp)</li> </ol>	<ol style="list-style-type: none"> <li>1. Conch</li> <li>2. Lobster</li> </ol>	<ol style="list-style-type: none"> <li>1. Americal Eel</li> <li>2. Mulletts</li> <li>3. Sand Fish/River Goby</li> <li>4. Mud fish</li> <li>5. Shrimp</li> <li>6. Crayfish</li> <li>7. Neritid Snails</li> </ol>

# Artisanal Sampling



# Industrial Sampling

- \* Visit landing sites for vessel offloading
- \* Landing logsheet submissions
- \* Biological sampling conducted at processing plants

# Profile of fisheries and marine resources for Jamaica

Maritime Domain	Main international agreements	Jamaica and the Republic of Colombia, 1993 Jamaica and the United States of Mexico Nicaragua, Cuba, Belize, Cayman and Honduras
	Joint management plans	Early 1990's Draft Management plan for Marine Fisheries was developed. Queen conch currently being revised.
General figures on production sector	Catches	11,256.21 Tons; 2014
	employments	25,503 Registered fishers , 2014
Available fisheries in the country	National fleet	7,000 Registered
	Foreign fleet	Seasonal

# Profile of fisheries and marine resources for Jamaica

## Stocks assessed

Queen conch, 2015;  
Spiny lobster 2008,2009,2010,2011,2014

## Trends and issues

### Queen Conch (Quota managed)

- ✓ Catch rates for queen conch fished on Pedro Bank averages around 37 kgs/hr;
- ✓ Biomass estimates for exploited stock was 12,213.98 MT (2011 Abundance Survey)
- ✓ Density 369.89 conch/ha for total population 184.52 conch/ha for exploitable stock (2011 Abundance Survey)

### Caribbean Spiny Lobster (Limited number of industrial Licences)

- ✓ Exports averages around 300 MT Annually.

### Issues

- IUU
- Landing log sheet submissions from industrial fishers particularly lobster
- Limited budgetary resources for Data Collection activities
- Lack of appropriate database to generate production

# Brief overview for the focus fisheries

Country overall production: 11,256.21 MT, 2014

Fishery	Percentage from overall country production
Queen Conch	4%
Flyingfish	
Lobster	2.6%
Artisanal Landings including (Coastal & offshore pelagics, Reef finfish etc)	93.4%

**Thank You!**  
**Gracias!**  
**Merci!**