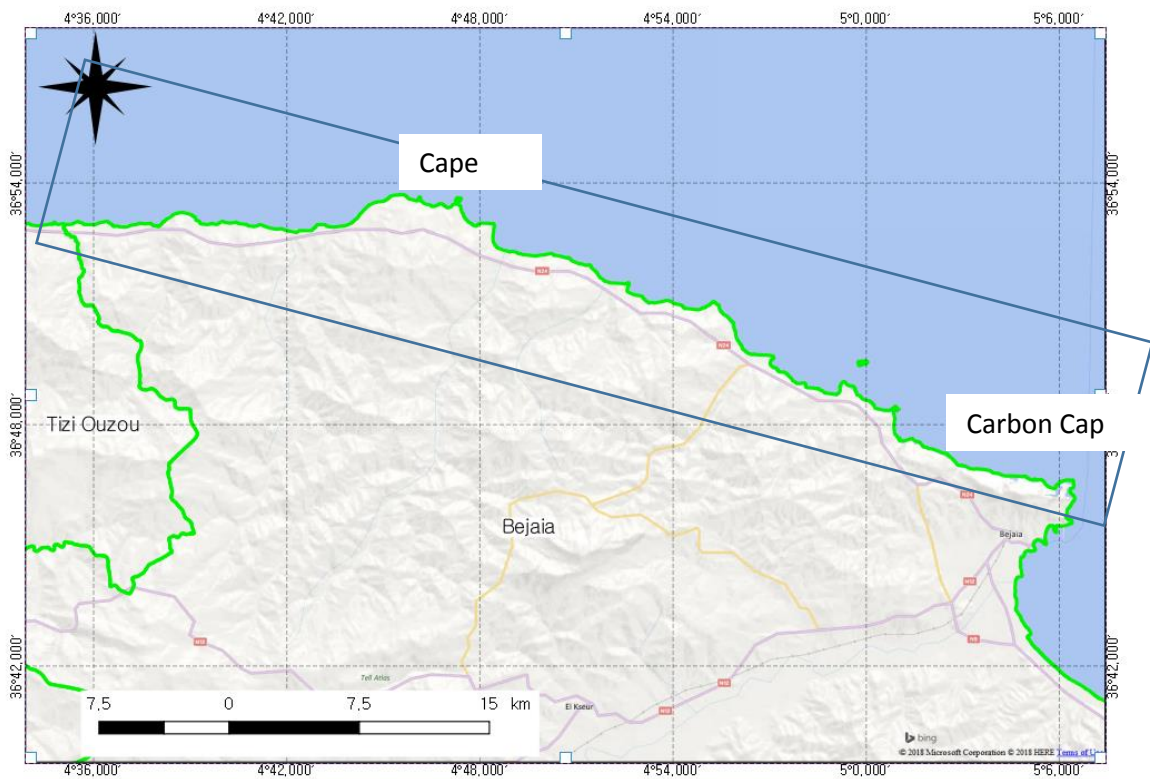
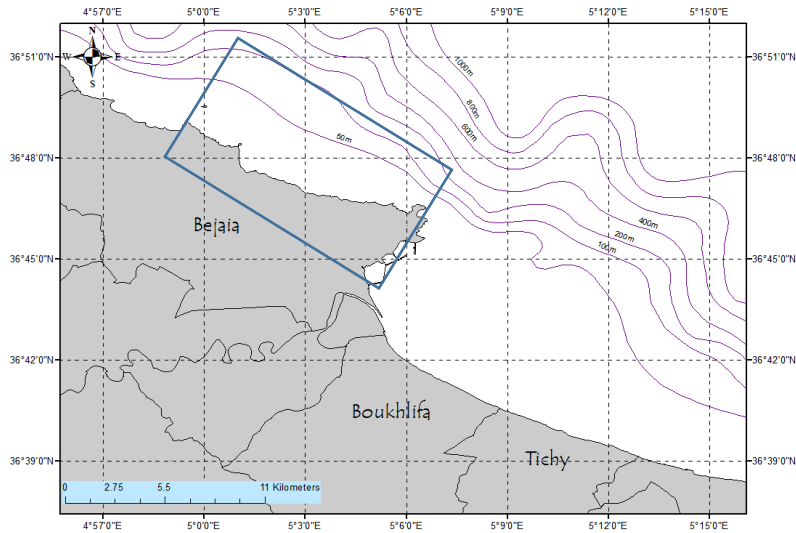


## Blue Hope initiative in the west coast of Bejaia



Ladder

"Territorial", about 60 km wide

### **Stakeholders**

Local population (need to define constituencies)

~ 30 000 beneficiaries (total 113 thousand people)

The region has traditionally turned its back on the sea, but the sea is a valuable asset

### **sectors:**

artisanal fishing

Pescatourisme

fish farming

Tourism

(To be more)

### **Value Chains:**

sustainable and inclusive development of the industry in an area where industry is currently undeveloped

### **Timing**

To be determined

### **building on**

Policy: Aquapêche

Finance: ANSEJ, Anjem, KNACK KNACK

### **socio-economic objectives**

Create an industry where there are not enough

### **environmental objectives**

Preserve the area that is currently relatively vierge-

### Scooping and vision

How can the target communities benefit from a multi-sectoral and inclusive investment plan?

- Scale Investment Plan
- the site
- Set stakeholders
- Industry value chain
- Timing,
- Built on what

### Vision

- environmental goal,
- social objectives,
- economic objectives
- Or others

---

### **Presentation of the area**

**flotilla:** 306 units, with 20 trawlers, sardine 52 and 233 small vessels (less than 12 m)

**The production** of 3 000 tonnes per year; over 80% of small pelagic

### **The Gulf of Bejaia :**

- trawling area, trawling is prohibited within 40 m.
- A commercial mixed and fishing port, traveler, gas, yachting, petroleum

### **part west :**

- hilly area, few trawling (two tow)
- Two Port:
  - o Port Tala Yilef:
  - o Port blessed kssila
- One breeding aquaculture project in floating cage (avoid areas has Posidonia), 12 to 15 kg / m<sup>3</sup>, a semi-intensive farming
- Two beaches stranding 01 and 02 in Beni Melbou Kssila

**Population** (Direct employment): 1523 position

A known area with the food industries.

09 associations of fishermen

### **constraints**

#### **East Zone**

- The Gulf is an anchorage area, which limits trawl zones (Operation of the marine area)
- Pollution problem: various of Wadi Soummam and Wadi Agrioun, the presence of industrial plants along the river. More landfills, discharges of waste from production plants of olive oils,
- The east coast is highly urbanized.
- Development of tourism in the East Zone.
- Project Ramsar Oued Soummam (wetland)

#### **West Zone**

##### **Gulf Gouraya:**

- Presence of the Pisan islands.
- Presence of a trait Shrimp Fishing
- The remarkable clothes (

##### **population:**

- Three village Tezebouche, Boulimat and Sakat. The wastewater is discharged directly into the sea,
- Presence of a large dump at Tezeboujte
- Presence of a career
- Extend the study area towards the border with Tizi Ouzou
- tourist expansion area: both fishing and aquaculture activities,
- Develop concepts Pescatourisme and Ecotourism

Map of Fisheries Management

##### **fish farming**

- 20 hectares allocated for the development of aquaculture,

---

##### **other sectors :**

- Fisherman
- **Tourism:** Marina (Tala Ilef)
- Public works,
- Local collectivity,
- The environment

- Developing tourism and fishing activities, and other activities that comes with
- National land use plan,

Montere the advantage that one can have of the sea,

- Fish consumption

It may be based on existing infrastructure:

We can develop the activities of aquaculture and tourism,

**associative movements :**

- At first, everyone is against aquaculture, over time, the concept takes its place,
- 

**Investment plan :**

- **Population:** 30 000 person local population,

**To start a business**

- A legal activity,
- A funding
- Know how,
- Policy and governance;

**Example Beni Kssila :**

- Going from 02 vessels to 20 vessels,

**A tourism:**

---

- summary