



Food and Agriculture
Organization of the
United Nations



Norad



FISHERY COMMITTEE FOR THE CENTRAL EASTERN ATLANTIC

Scientific Sub-Committee

Eighth Session

22 to 26 October 2018

Abidjan, Côte d'Ivoire

EAF-Nansen Programme - Report on activities



1. INTRODUCTION

- **Historical background**

The **Nansen Programme** began in 1975 as a joint initiative of Norway and the Food and Agriculture Organization of the United Nations (FAO). Its objective was to help newly independent states improve food security by identifying resources in their seas and oceans to support the development of their fisheries. A research vessel, *Dr Fridtjof Nansen* was built for the programme, serving as a laboratory for research, training and the exchange of knowledge. For over 40 years, the Nansen Programme has assisted developing countries in fisheries research and management and has been acclaimed as a unique mechanism for cooperation, knowledge generation and exchange in developing regions, particularly in Africa. The Nansen Programme has journeyed through various phases, adapting and evolving to address new ocean issues and challenges that have come to light.

In the last decade the programme operated as the **EAF-Nansen Project** and supported knowledge generation for and the implementation of the Ecosystem Approach to Fisheries (EAF) management in Africa. As such, the programme supported the piloting of the implementation of EAF for fisheries management in selected fisheries through the development of fisheries management plans. Through this orientation, the programme has furthered its emphasis on tackling transboundary ecosystem issues, fostering cooperation and collaboration, and harmonizing approaches towards a sustainable management of fisheries. Working with 31 coastal countries in four regional groupings around Africa, the programme has strengthened national and regional fisheries management bodies, providing each with the necessary skills and knowledge to implement EAF.

The **EAF-Nansen Programme** started in May 2017, carrying forward the objectives of the EAF-Nansen Project, with attention to issues of sustainability and threats to marine ecosystems, broadening its scope to also consider pollution and climate change besides fisheries impacts. The vision for the new Programme is to “Partner with developing countries, other international organizations and programmes to advance knowledge on impacts of multiple stressors on marine ecosystems, fisheries and biodiversity in tropical/subtropical regions, and to support the countries to be better prepared to address these through improved management and adequate policies”.

It will continue to support the implementation of EAF, while also broadening the scope of its scientific research to incorporate research and survey work that extends beyond pure fisheries concerns. The new programme builds on the paradigm of participatory knowledge-based decision-making, and therefore aims to strengthen the link between knowledge generation, including the research activities of the *Dr Fridtjof Nansen* research vessel, and policy, legislation and decision-making at regional and national levels.

A new state-of-the-art research vessel – the third *Dr Fridtjof Nansen* – was made available to the programme and started its work in May 2017 to continue the work of its two predecessors. It has been equipped with the latest technologies to further its research and data collection capacity and tackle new and emerging challenges in marine research and fisheries management. The vessel will also provide a reliable platform for national and international partners to gather data on the oceans and play a key role in providing knowledge necessary to understand the effect of pollution and climate-related changes on marine resources.

2. PROGRAMME OVERVIEW

The long-term objective or impact of the Programme is that “*Sustainable fisheries improve food and nutrition security for people in partner countries*”.

To contribute to this long-term objective, the Programme works towards three mutually reinforcing Outcomes:

Outcome 1: Fishery research institutions provide relevant and timely scientific advice for management

Outcome 2: Fisheries management institutions manage fisheries according to the EAF principles

Outcome 3: Fisheries research and management institutions have appropriate human and organizational capacity to manage fisheries sustainably

These three Outcomes represent the three pillars of the EAF-Nansen Programme, provide overall direction and serve to group the outputs and activities into the following three categories: science and science-based advice, fisheries management and capacity development. The outputs related to each outcome are presented in Figure 1 below.

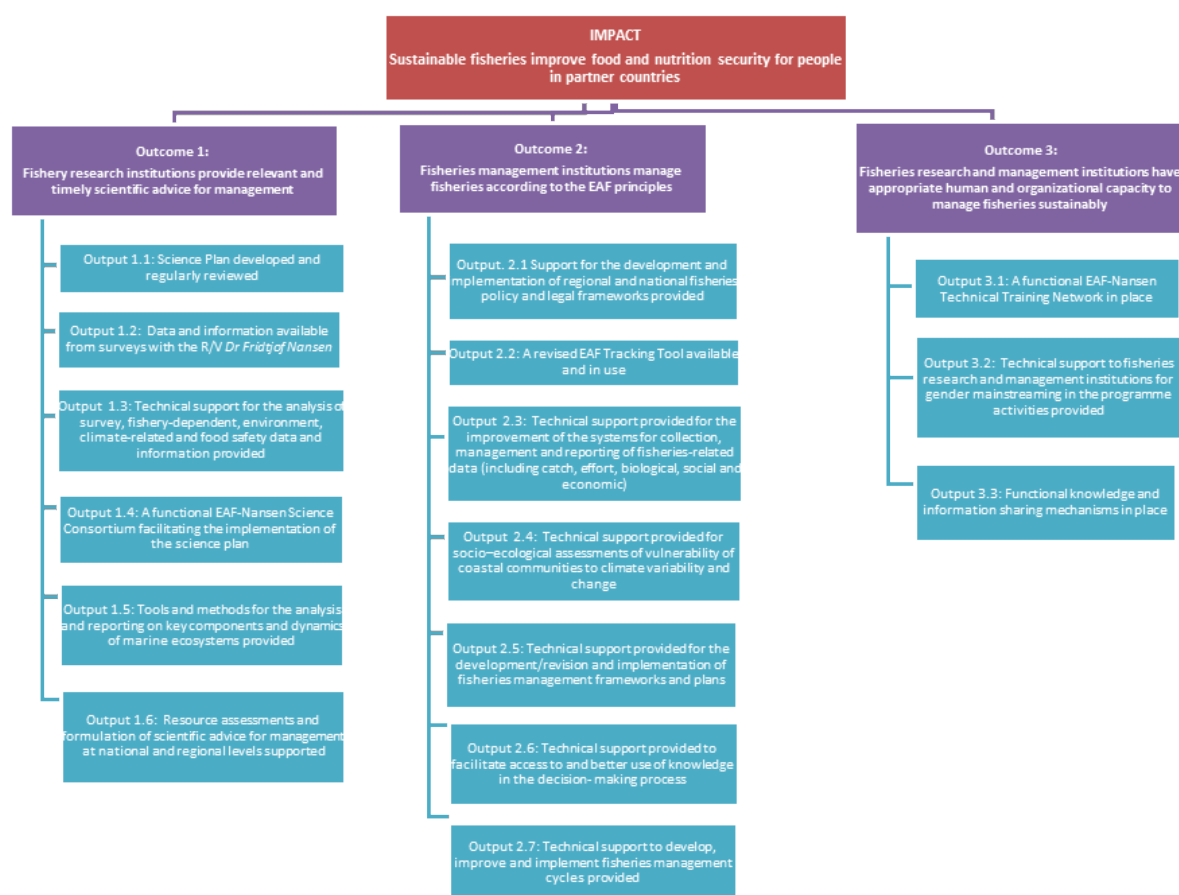


Figure 1: EAF-Nansen Programme: Impact, Outcomes and Outputs.

In total the Programme has 16 expected outputs, six in relation to science and delivery of scientific advice (15 activities), seven in relation to fisheries management (23 activities), and three in relation to capacity development -including gender and communication (15 activities).

The research vessel *Dr Fridtjof Nansen*, owned by the Norwegian Agency for Development Cooperation (Norad), is an integral tool in the Programme and the vessel flies the UN flag as the house

flag. The vessel is operated by IMR, who provides scientific services to the running of the survey programme and to the implementation of the associated science plan.

A science plan has been developed that outlines the research themes to be addressed by the Programme. This was developed in consultation with international, regional and national partners and includes three main topics: (i) sustainable fisheries, (ii) oil/gas/pollution/habitat mapping and (iii) climate change. The science plan is further subdivided into 11 research themes.

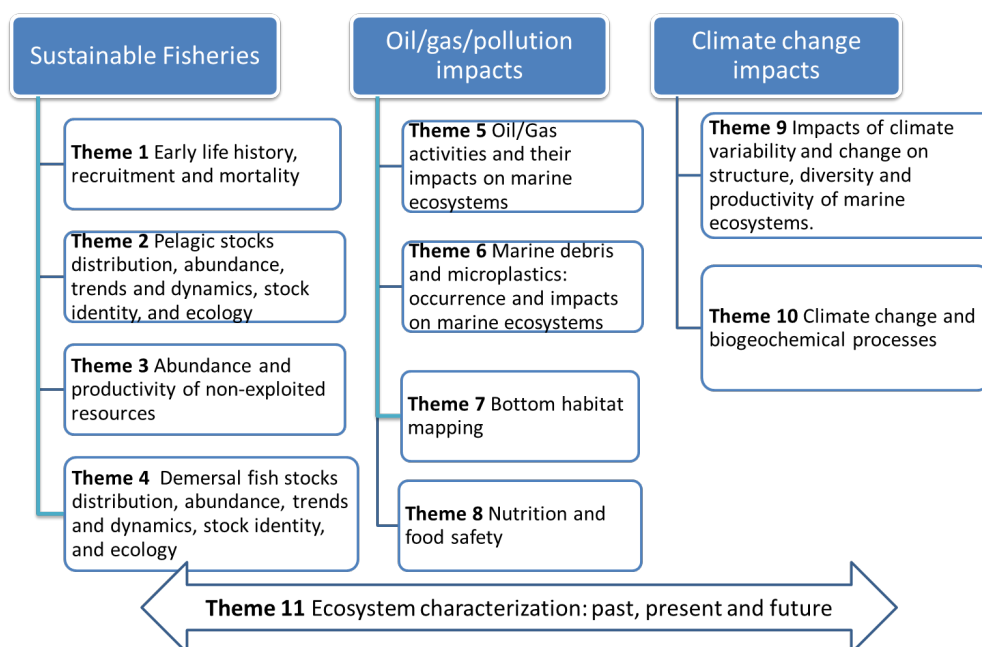


Figure 2: EAF-Nansen Programme science plan themes

• Programme implementation structure

The Programme Consultative Structure is depicted below (Figure 3). This structure was based on the one used with success in the EAF-Nansen Project, with some modifications. During programme preparation, two of the Regional Fisheries Bodies (RFBs) in Africa namely the Fishery Committee for the Eastern Central Atlantic (CECAF) and the South West Indian Ocean Fisheries Commission (SWIOFC) and the Benguela Current Convention (BCC) were approached to see if they would play the role of Regional Steering Committees (RSCs) for the EAF-Nansen Programme.

An additional Steering Committee for global issues and other regions has also been added. These regional steering committees provide input to the Programme on planning, reporting and advice purposes, and they also assist in the coordination of the Programme activities with other initiatives going on in the region, to maximise synergies and minimize potential overlaps.

The RSC is intended as a mechanism to strengthen ownership of the Programme's interventions at regional level and an opportunity to reinforce the inter-linkages between the EAF-Nansen Programme and the RFBs or multi-sectoral Commissions, as well as with related projects and programmes in the regions. It will be responsible for assessing progress in programme delivery and formulating recommendations to the Programme Coordination Unit (PCU) regarding requirements, priorities and work-plans for programme implementation in the respective region.

Specifically, each RSC will:

- Provide overall guidance to the Programme Coordination Unit (PCU) on the implementation of the Programme in a given region.

- Review Programme progress and provide recommendations on priorities for the annual work plans of the Programme in the respective region to the PCU.
- Facilitate the “mainstreaming” of Programme’s findings and recommendations into regional and national processes, as appropriate.
- Support the inter-linkages between the EAF-Nansen Programme, and related projects and programmes in the corresponding region.

A Programme Forum has been maintained for broader dissemination and sharing of experiences between all partners to the Programme.

The structure clearly is meant to facilitate consultation at various levels. Based on the outcomes of the consultation process with the RSCs and the countries, a work programme will be prepared by the PCU for discussion and endorsement at the Norad/FAO/IMR annual meetings.

In addition to what is shown in the diagram, the programme document also foresees consultative processes at the national level through the EAF National Task groups¹ and with the support of a national focal point.

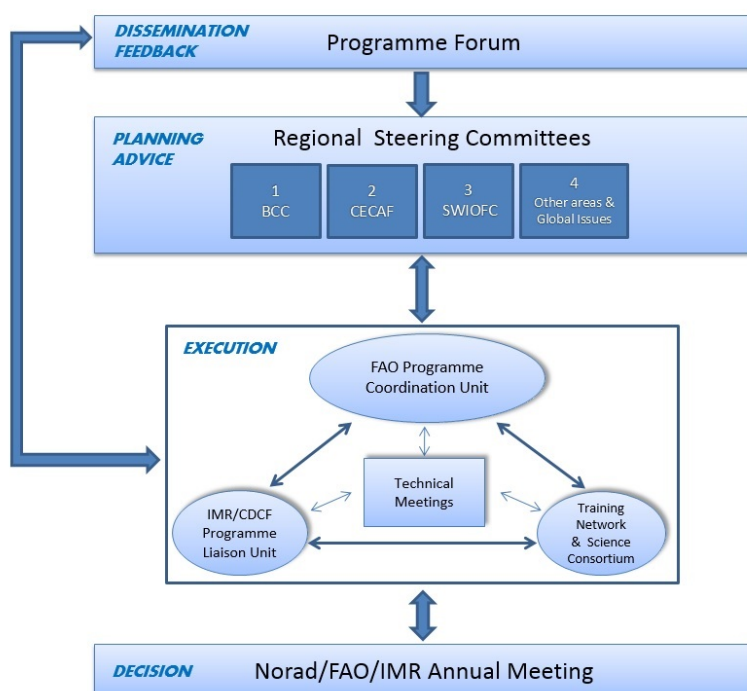


Figure 3: The Programme consultative and strategic planning structure

3. REVIEW OF THE ACTIVITIES CARRIED OUT IN THE CECAF AREA IN THE FRAMEWORK OF THE EAF-NANSEN PROGRAMME- 2017 and 2018

Outcome 1: Fishery research institutions provide relevant and timely scientific advice for management

- Planning meetings and pre-survey meetings

¹ These will only be established in countries where national or shared stocks fisheries management activities take place

In 2017, three planning meetings were organized for the CECAF area, one in Casablanca (Morocco) and one in Accra (Ghana), to discuss the Programme, and to receive feedback on the content of the science plan, identify regional research priorities and to plan the surveys with the R/V “Dr Fridtjof Nansen”. A pre-survey meeting was also organised for the BCC area and took place in Luanda. The meetings also served to introduce and discuss the management and capacity development components of the programme, highlighting the interlinkages between the three components. Based on the discussions at these meetings the draft survey plan for 2018 was prepared, which was later endorsed by Norad. Outline sailing orders were also developed, which were then detailed in collaboration with the countries either through email exchange or through dedicated meetings, as required.

- **Surveys**

The Programme continues to provide data, information and knowledge in support of sustainable fisheries in an ecosystem context using the R/V *Dr Fridtjof Nansen*.

In 2017, the R/V *Dr Fridtjof Nansen* surveys were mainly dedicated to pelagic resources and ecosystems in continental shelf and slope areas of the West Coast of Africa. Three main survey legs, subdivided in several sub legs (see table below), were carried out between 8 May and 12 December 2017 for a total of 208 survey days with the main objective of assessing the abundance and distribution of pelagic resources, environmental conditions within which they are encountered, and aspects of their early life history. Two transects, dedicated to research on mesopelagic fish, were also conducted in the North and in the South. The survey covered the area from Morocco in the North to Ghana in the Gulf of Guinea and from Gabon to South Africa. 175 scientists from the region participated in the surveys and received on-the-job training.

In 2018 the vessel was used to survey the waters of the Indian ocean, and the Bay of Bengal. Three main survey legs with a total of 12 sub-legs have been carried out so far. In 2018, 235 scientists were involved in the 229 survey days.

The results of the surveys feed into the science plan as well as into stock or ecosystems assessments and special analyses, as relevant and required.

Table 1: R/V *Dr Fridtjof Nansen* survey programme 2017

Survey	Leg	Arrival	Departure	Days of survey	Number of participants	M	F
2017401	leg 1.1	8/05 Casablanca, Morocco	26/05 Las Palmas, Spain	18	9	6	3
	leg 1.2	27/05 Las Palmas, Spain	05/06 Las Palmas, Spain	9	12	10	2
	leg 1.3	8/06 Las Palmas, Spain	04/07 Dakar, Senegal	26	24	23	1
	Leg1.4	5/7 Dakar, Senegal	18/7 Conakry, Guinée	13	19	17	2
2017402							
	Leg 2.1	21/07 Dakar, Senegal	20 /08 Monrovia, Liberia	30	12	9	3
	Leg 2.2	22 /08 Monrovia, Liberia	13/09 Tema, Ghana	22	14	12	2
2017403	Leg 3.1	21/09 Pointe Noire, Gabon	11/10 Luanda, Angola	22	20	13	7
	Leg 3.2	14 /10 Luanda, Angola	14/11 Walvis Bay, Namibia	31	22	9	13
	Leg 3.3	16/11	24/11	8	15	9	6

	Walvis Bay, Namibia	Walvis Bay, Namibia				
Leg 3.4	26 /11 Walvis Bay, Namibia	17/12 Cape Town, South Africa	21	18	8	10

- **Post-survey meetings**

The main purpose of the post-survey meetings is to finalize the survey report, discuss follow-up activities, including processing of the samples and data collected during the survey, review possible research projects, including deliverables to EAF-Nansen Programme and regional authorities and discuss needs for capacity development (as appropriate).

From the beginning of the programme, three post-survey meetings have been organized in the CECFAF area: one in Dakar, Senegal in December 2017 to discuss the results for the leg 1, one for leg 2 in Accra, Ghana in April 2018 and last one was organized in Cape Town, South Africa in August 2018, to discuss the results of leg 3. The post-survey meeting in Dakar also provided for a meeting of the working group for the planning of acoustic surveys, back to back..

A post-survey meeting on mesopelagics will be organized in Rome, Italy from 6-9 November 2018 to review the work in all mesopelagic and oceanographic transects that have been conducted so far, and also discuss the future work on Theme 3 of the science plan (mesopelagics). A concept note and draft agenda for the meeting are available. Participants are survey participants, experts in mesopelagics, oceanography or plankton research.

Draft reports are available for the different survey legs and it is expected that the final survey reports, will be sent officially to the countries before the end of the year.

- **Port call events**

The Programme in collaboration with the Norwegian Embassies, the national authorities and the national FAO offices organized four port call events in 2017 in conjunction with the port calls of the R/V Dr Fridtjof Nansen in order to raise the profile of the Programme, introduce the research vessel and to flag the longstanding collaboration between FAO, Norad, and IMR on ocean issues and the work with the partner countries.

For Western Africa, these events were organized in Casablanca (Morocco), Dakar (Senegal), Tema (Ghana) and Walvis Bay (Namibia). All the events were very much appreciated and in some cases, they saw the participation of a number of dignitaries, including the President of Ghana.

- **Science plan implementation**

The EAF-Nansen Science Plan has been substantially detailed during the reporting period, and more complete theme descriptions were made available in December 2017. including an overview of possible contributing institutions by theme. In order to further develop the science themes and the partnerships for each of these, a number of events were organized in 2018 mainly focused on follow up activities for the 2017 surveys in Western Africa.

An example is the workshop on “Pelagic resources and ecosystems of the Atlantic coast of Africa” organised in Cape Town in February 2018 to further plan the work of four inter-related themes relevant to pelagic resources and ecosystems, i.e.:

- Theme 1 Early life history, recruitment and mortality

- Theme 2 Pelagic stocks distribution, abundance, trends and dynamics, stock identity, and ecology
- Theme 9 Impacts of climate variability and change on structure, diversity and productivity of marine ecosystems.
- Theme 10 Climate Change (CC) and biogeochemical processes

The main objectives of the workshop were to bring together resource persons from partner institutions, set up research teams, develop specific research projects and review the data/samples collected by the RV Dr F. Nansen in 2017. The workshop was attended by more than 60 scientist from 10 West African countries, agreeing on key research projects to be implemented jointly by the scientific partner's to the EAF-Nansen Programme.

In planning research activities under the science plan, management needs and requirements with respect to fisheries, but also with respect to environment and energy sectors are considered, depending on the theme. Key management questions in relation to the different themes are discussed and information needs and gaps are identified. More strategic (long-term) questions are also addressed in some cases.

A key issue is the need for additional support (human and financial). The needs vary between projects, but mostly what is required is travel funds to facilitate co-operative post-processing, either in the region or in IMR, Norway. In some instances, funds for analyses are requested. Not all of these requests are fundable through the EAF-Nansen Programme, and specific partnerships need to be established.

In addition, upcoming meetings are planned in November 2018 in connection with Theme 3: Mesopelagics (Rome); Theme 6: Marine debris and microplastic and Theme 8: Nutrition and Food Security (see list of upcoming meetings below). Selected experts from the region have been invited.

- **Other science-related activities**

An expert workshop on ecosystem characterization was held in August 2018 at the FAO HQs, with participation of representatives from the regions that the EAF-Nansen Programme operate including one expert from the CECAF region. The objective was to build a common approach to ecosystem characterization.

Finally, with respect to fish resource assessments and formulation of scientific advice to management, the Programme supported specific workshops to analyze the results of the 2017 Dr. Fridtjof Nansen surveys with the objective to prepare working papers for use by the FAO Working group on the assessment of small pelagic fish off Northwest Africa that took place in Banjul, The Gambia, 26 June–1 July 2018 and the FAO CECAF FAO/CECAF Working Group on the Assessment of Small Pelagic Fish – Subgroup South that was held in Accra, Ghana, from 12-20 September 2018, Technical support and financial support was provided to both of the groups. Overall it is expected that the results of the work under the science plan themes will contribute to address specific scientific knowledge gaps identified by the working groups and the scientific committee.

Outcome 2: Fisheries management institutions manage fisheries according to the EAF principles

The outputs under outcome 2 relate to technical support to improve fisheries management, encompassing policy, legal and operational management support, the collection and analysis of relevant fisheries data (including biological, ecological as well as social and economic data) and support to the development of science-based decision-making through the implementation of the

ecosystem approach to fisheries (EAF) including the development of fisheries management plans using the EAF framework and support to setting up a functional fisheries management cycle.

The implementation of the Ecosystem Approach to Fisheries and supporting the management of fisheries on shared stocks are two key mutually reinforcing objectives of the EAF-Nansen Programme.

- **Fisheries management plans prepared in the framework of the EAF-Nansen Project**

In the framework of the EAF-Nansen Project, a number of activities were devoted to the assistance in preparation and approval of fisheries management plans. For the CECAF area, the management plans approved and endorsed are as follows:

Benin :

- Direction de la Production Halieutique, Benin, 2013. Plan de Gestion de la pêche à la senne de plage

Cameroon:

- Ministère de l’Elevage, des Pêches et des Industries Animales, 2013. Plan de gestion de la pêche crevette industrielle au Cameroun

Côte d’Ivoire:

- Ministère des Ressources Animales et Halieutiques, 2013. Plan de gestion de la pêche de la senne de plage du littoral de la Côte d’Ivoire

Gabon :

- Ministère de l’Agriculture de la Pêche de l’Elevage et du Développement Rural, 2013. Plan d’aménagement pêche crevette industrielle du Gabon

Ghana:

- Ministry of Fisheries and Aquaculture Development, 2013. a management plan for the beach seine fishery in Ghana

Liberia:

- Bureau of National Fisheries, Liberia, 2012. A Sector Plan for the Marine Small-Scale Fisheries of the Republic of Liberia

Nigeria:

- Federal Ministry of Agriculture and Rural Development, 2013. A management plan for the industrial shrimp fishery of Nigeria

Sierra Leone :

- Ministry of Fisheries, Marine Resources and Aquaculture, Sierra Leone, 2012. A management plan for the marine small-scale fisheries of Sierra Leone

Togo:

- Ministère de l’Agriculture, de l’Elevage et de la Pêche, 2013. Plan d’aménagement de la pêche de la senne de plage au Togo

Regional plans

- CCLME/EAF-Nansen, 2014. Regional management framework for the shared small pelagic fishery of Northwest Africa (Morocco, Mauritania, Senegal and the Gambia)

Furthermore in 2017 in the context of the EAF-Nansen Programme, assessments of data and capacity needs for the implementation of selected EAF management plans were conducted, hence needs and gaps were identified, including data needs to support implementation of the set goals in the management plans.

- **Support to the implementation of fisheries management plans and the setting up of a fisheries management cycle**
- Provisions are made within the new Programme to support implementation of selected fisheries management plans, focusing on those that have been prioritized for implementation by the respective countries. A framework document for small projects to support this implementation was developed and activities due to start in selected countries in the Gulf of Guinea. Furthermore, a key objective of the programme is support to the management of fisheries on shared stocks and in this context specific assistance will be provided to support the management of shared stocks in the Northwest African region. An interregional workshop on the management of shared stocks and implementation of an ecosystem approach to fisheries within the framework of the EAF-Nansen Programme was held in Dakar (Senegal) from 24 to 26 April 2018. The objective of the workshop was to examine with the representatives of partner institutions and principal initiatives the current situation and related activities pertaining to shared stocks by identifying the needs and opportunities to support the management of fisheries exploiting shared stocks within the framework of the EAF-Nansen Programme. The main issues to be considered in the management of shared stocks were outlined. Then the legal, political, management and scientific considerations in the management of shared resources were reviewed. The States also shared their experiences regarding the management of shared stocks. Sub-regional and national initiatives were presented and discussed. The Northwest African region identified Small pelagics as a priority and specifically sardinella. Work is now ongoing to develop a small project to support implementation of activities identified with the partner countries. **EAF-Tracking Tool**

A baseline for implementation has been prepared based on existing information on the application of the tracking tool. A revised tool is under development that will be used to track EAF-implementation and also the EAF-process.

The tool is important as it supports the Outcome indicator for Outcome 2.

Outcome 3: Fisheries research and management institutions have appropriate human and organizational capacity to manage fisheries sustainably

The outputs under outcome 3 relate to capacity development across the thematic themes of the Programme, technical support to research and management institutions for gender mainstreaming in the Programme activities, and the establishment of a functional knowledge and information sharing mechanism.

- **Capacity development and the Technical training Network**

A capacity development strategy is in elaboration and resource people in partner countries were asked to provide inputs to the capacity need assessment in order to provide their inputs to the strategy development and to highlight national and regional priorities to be taken into account. The strategy should be available to circulate to partner countries shortly.

The Technical Training Network has been identified in the Programme document as instrumental to implement capacity development activities in Africa and work on making this functional has also been initiated, building on past experiences with working with selected institutions under the EAF-Nansen project.

The Technical Training Network is to be composed of universities and other training institutions dealing with fisheries management and research in partner countries and the intention is that the network will be set up to provide short- and medium-term courses in a number of disciplines. The intention is that the network members will support the identification of needs and the development of courses and training support materials and actual running of courses covering different aspects of fisheries research and development. Specific University courses (or modules) and related curricula could also be developed on an incremental basis. Table 2 below highlights the type of courses that were identified during Programme development:

Table 2: Proposed thematic areas for short term capacity development

Fisheries research	Fisheries management
<ul style="list-style-type: none"> • Fish stock assessment 	<ul style="list-style-type: none"> • Basic fisheries management
<ul style="list-style-type: none"> • Survey planning and reporting (both trawling and hydro-acoustics) 	<ul style="list-style-type: none"> • EAF management and elaboration of management plans
<ul style="list-style-type: none"> • Fish and invertebrate taxonomy 	<ul style="list-style-type: none"> • Fisheries statistics
<ul style="list-style-type: none"> • Data handling and management (e.g. in Nansis) 	<ul style="list-style-type: none"> • MCS Fisheries inspection, control and enforcement
<ul style="list-style-type: none"> • Scientific instrumentation - functioning, maintenance and calibration 	<ul style="list-style-type: none"> • Fisheries legislation
<ul style="list-style-type: none"> • Laboratory analyses of plankton, benthos, sediments, nutrients and pollution. 	<ul style="list-style-type: none"> • Fisheries economics and Fisheries policy analysis
<ul style="list-style-type: none"> • Others that would be identified as necessary. 	<ul style="list-style-type: none"> • Others that would be identified as necessary.

While the capacity strategy is expected to provide overall guidance on capacity development under the Programme, there is still a need to get specific feedback from partner countries on the short-term courses and the thematic areas of highest priority that would support building the required capacity within the partner institutions as well as further information on potential partner institutions in relation to their areas of competence in the different sub-regions where the EAF-Nansen Programme is operating. Feedback from the partner countries in CECAF is therefore sought on this issue.

Meanwhile some capacity development activities have been organized mainly in relation to the analysis of the samples from the 2017 surveys. For example, two capacity development workshops for biological analysis and introduction to stock identification techniques using samples collected onboard the R/V *Dr. Fridtjof Nansen* were organized in Dakar, Senegal and in Accra, Ghana and workshops and study tours to analyze ichthyoplankton data were organized in the context of Theme 1: egg and larvae in Namibia and Morocco.

So far, Western African countries have benefited mostly from on-the-job training through the survey work, however this is expected to change as the research work under the science plan is picking up and the technical training network becomes fully operational.

The programme also has the ambition to provide opportunities to support researchers from partner countries to pursue higher degree programmes in fisheries research and management, however currently funding is not available. The EAF-Nansen programme is actively seeking partnerships that can facilitate such a support. One such initiative is the partnership with the University of Western Cape, where some

scholarships can be offered for studies on jellyfish, mesopelagics and neuston, using available information from the *Dr Fridtjof Nansen* surveys (as appropriate). Scientists from partner countries have been encouraged to apply.

Similar partnerships are under development, e.g. for the analysis of sediment and benthos samples from the oil and gas environmental impact assessment baseline survey in Mozambique and a workshop is planned on chemical analysis in December 2018.

- **Gender Strategy**

A gender strategy, to provide a framework on how the Programme can assist fisheries research and management institutions for gender mainstreaming in the programme activities, was prepared and shared with partners in early 2018. The strategy suggests three priority areas for mainstreaming:

- Programme management, with the overarching objective of raising the profile of gender throughout the EAF-Nansen Programme and increasing awareness of gender issues among all those involved in the management and oversight of the Programme;
- Programme activities, with the overarching objective of enhancing the sensitivity and responsiveness of all programme activities to gender issues, and pave the way to overcome gender inequalities in fisheries in member countries, and
- Programme Communication, with the overarching objective of showcasing the commitment and actions of the EAF-Nansen Programme towards mainstreaming gender in fisheries management and governance and addressing gender inequalities in fisheries.

Building on the existing good practices developed by FAO and other partners, the programme will integrate gender sensitive needs assessment and planning into training and other capacity development activities.

- **Communication**

The updated EAF-Nansen Programme website is available as well as an updated brochure on the Programme and the science plan. The communication strategy is expected to roll-out during the course of 2019.

- **Upcoming activities in 2018 of relevance to CECAF area**

October:

- 17-19 October, Rome, Italy, semi-annual meeting on the EAF-Nansen Programme

November:

- 4-9 November, Rome, Italy, post-survey meeting for Mesopelagic and oceanographic Legs (2017 and 2018)
- 13-15 November, Vigo, Spain, Training workshop on the identification and biological sampling of deep-sea benthic fauna with a particular focus on corals and sponges (FAO Deep-sea Programme, EAF-Nansen Programme will support selected participants)
- 13-15 November, Bergen, Norway Theme8: Food safety and nutrition expert workshop
- 26-30 November, Bergen, Norway Theme 6: Marine debris and microplastics expert workshop

December:

- 4-6 December, Rome, Italy, expert workshop on Bottom Habitat Mapping

- 11- 14 December, CCLME Steering Committee and Symposium. Discussions on shared stocks work in Northwest Africa (EAF-Nansen)

4. 2019 WORKPLAN AND ACTIVITIES

In 2019 and likely in 2020, the survey work will focus on the Atlantic coast of Africa. Hence, the main science activities for the CECAF region will be linked to the surveys, to the follow up of the research work from the 2017 and 2019 surveys and the research projects identified in the science plan as well as the assessment work, nationally or through CECAF. Support can also be provided to facilitate science-management policy dialogues .

For the fisheries management output, it is expected that work to support implementation of EAF may initiated in 3 countries. Countries were selected based on their commitment to engage in the EAF process in the earlier phase, but renewed commitment needs to be expressed. The work on supporting shared stocks management, including through the EAF-process. At the same time, the Northwest Africa region has been selected as a focus region for shared stock management. The countries involved have selected sardinella as a case study.

Global work on Legislating for EAF, development of policy, bringing fisheries into cross sectoral dialogues and support to track EAF implementation (including the use of the Tracking Tool) will continue and expand. The same is the case for the capacity development component, and it is expected that the technical training Network will become operational during the course of 2019.

Appendix I.

EAF-Nansen Programme

Regional consultative process in the EAF-Nansen Programme

Terms of Reference for the Regional Steering Committees

Two of the Regional Fisheries Bodies (RFBs) in Africa namely the Fishery Committee for the Eastern Central Atlantic (CECAF) and the South West Indian Ocean Fisheries Commission (SWIOFC) and the Benguela Current Convention (BCC) have been requested to play the role of Regional Steering Committees (RSCs) for the EAF-Nansen Programme.

The RSC is intended as a mechanism to strengthen ownership of the Programme's interventions at regional level and an opportunity to reinforce the inter-linkages between the EAF-Nansen Programme and the RFBs or multi-sectoral Commissions, as well as with related projects and programmes in the regions. It will be responsible for assessing progress in programme delivery and formulating recommendations to the Programme Coordination Unit (PCU) regarding requirements, priorities and work-plans for programme implementation in the respective region.

Specifically, each RSC will:

- Provide overall guidance to the Programme Coordination Unit (PCU) on the implementation of the Programme in a given region
- Review Programme progress and provide recommendations on priorities for the annual work plans of the Programme in the respective region to the PCU.
- Facilitate the “mainstreaming” of Programme's findings and recommendations into regional and national processes, as appropriate.
- Support the inter-linkages between the EAF-Nansen Programme, and related projects and programmes in each region.

Composition of the Regional Steering Committee

Each RSC will be comprised of:

- One representative from each member country of the RFB, particularly coastal countries,
- One representative of each key partner of the EAF-Nansen Programme as may be determined from time to time,
- The National Focal Points of the EAF-Nansen Programme in the member countries of the respective RFB/Commission
- Representatives of FAO and IMR

Rules of Procedure

- i. The RSC will be chaired on a rotational basis by country representatives of the RFB/ the acting chair of the RFB;
- ii. Meetings of the RSC will take place in connection with the RFB Committee/Commission sessions, or at another agreed occasion should the Committee/Commission not meet on an annual basis ;
- iii. The EAF-Nansen Programme PCU will provide the secretariat for the RSC.