



UTF/077/ZAM: Technical Assistance to the Zambia Aquaculture Enterprise Development Project (ZAEDP)

Session 3

Checklist 5

Case/outbreak definition

Dr Nihad Fejzic

Training Course on Development of an Active Surveillance for Epizootic ulcerative syndrome (EUS) and Tilapia lake virus (TiLV) using the FAO 12-point surveillance checklist (for non –specialist) and its implementation

University of Zambia, Lusaka, 14-17 October 2019

Purpose

The purpose of a case definition is to assure that the surveillance will focus on the disease of concern and not any other disease showing similar clinical signs.

Case/outbreak definition might include clinical, laboratory and epidemiological determinants of disease in consideration.

On the other hand, strong consideration in making the case definition is to ensure sufficient surveillance system sensitivity (ability of the system to recognise disease in early stages of onset/introduction).

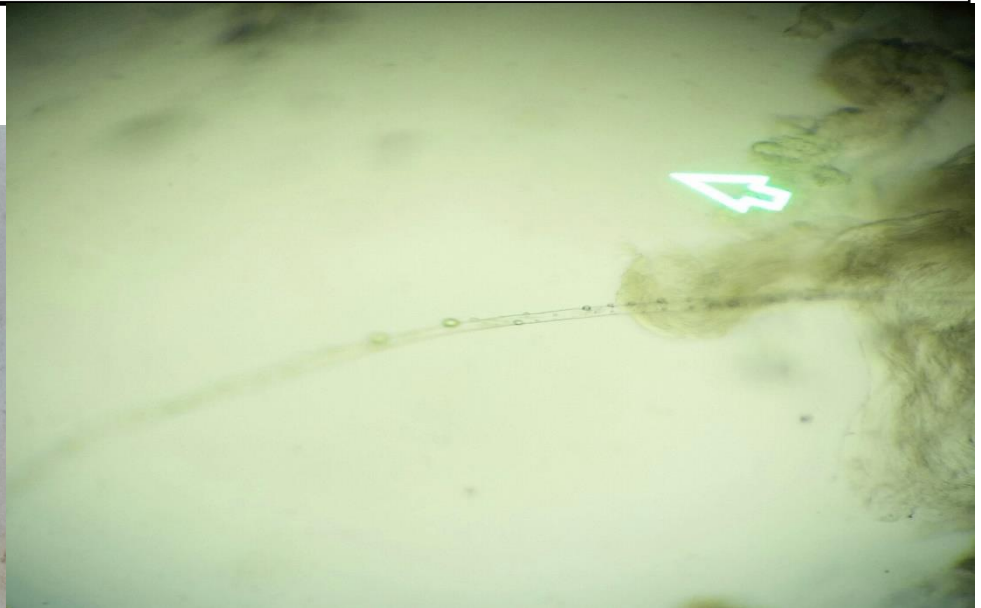
Case/outbreak definition

- Case/outbreak definition criteria are included:
 - Clinical
 - Laboratory test
 - Species, age
 - Other

Clear and unambiguous case definitions and outbreak definitions should be developed and documented for each disease under surveillance, using, where they exist, the standards in this guidelines and the OIE Aquatic Manual.

Case/outbreak definition

- | | |
|---|---|
| <ul style="list-style-type: none">• Case/outbreak definition are included | <ul style="list-style-type: none">• Suspect EUS case: A fish showing, red spots, ulcers or lesions similar to the ones associated with EUS followed by positive finding of fungal hyphae in tissue squash.• Suspect EUS location/farm: A location/farm where one or more suspect EUS fish have been found• Confirmed EUS case: Histopathology or Isolation or PCR• Confirmed EUS location/farm: A location/farm where one or more confirmed EUS fish have been found |
|---|---|



EUS

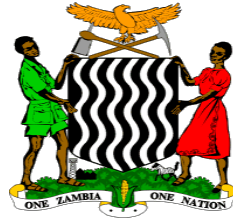
The following case definition might be adopted for purpose of EUS surveillance:

- **Suspect** EUS case: A fish showing red spots, ulcers or lesions similar to the ones associated with EUS followed by positive finding of fungal hyphae in a tissue squash.
- **Suspect** EUS location/farm: A location/farm where one or more suspect EUS fish have been found.
- **Confirmed** EUS case: Histopathology or fungal isolation or PCR.
- **Confirmed** EUS location/farm: A location/farm where a case of EUS has been confirmed.

TiLV

TiLV is not OIE listed aquatic disease, so for purpose of this surveillance following model might be used:

- **(suspected)** A tilapia farming system in which the farmer has observed during the previous and ongoing production cycles sudden mortalities and/or clinical signs such as skin redness/erosion or eyes protrusion/ruptured/cloudiness or abdomen swollen or scale protrusion/loss, attributable to the presence of TiLV (e.g. farmer answer “yes” to the question whether TiLV has occurred or not in the farm of interest).
- **(confirmed)** Upon the collection of 30 moribund or sick fish samples, TiLV is confirmed by a positive test result using PCR and the detection of histopathological signs of TiLV.



UTF/077/ZAM: Technical Assistance to the Zambia Aquaculture Enterprise Development Project (ZAEDP)

Thank you for your attention