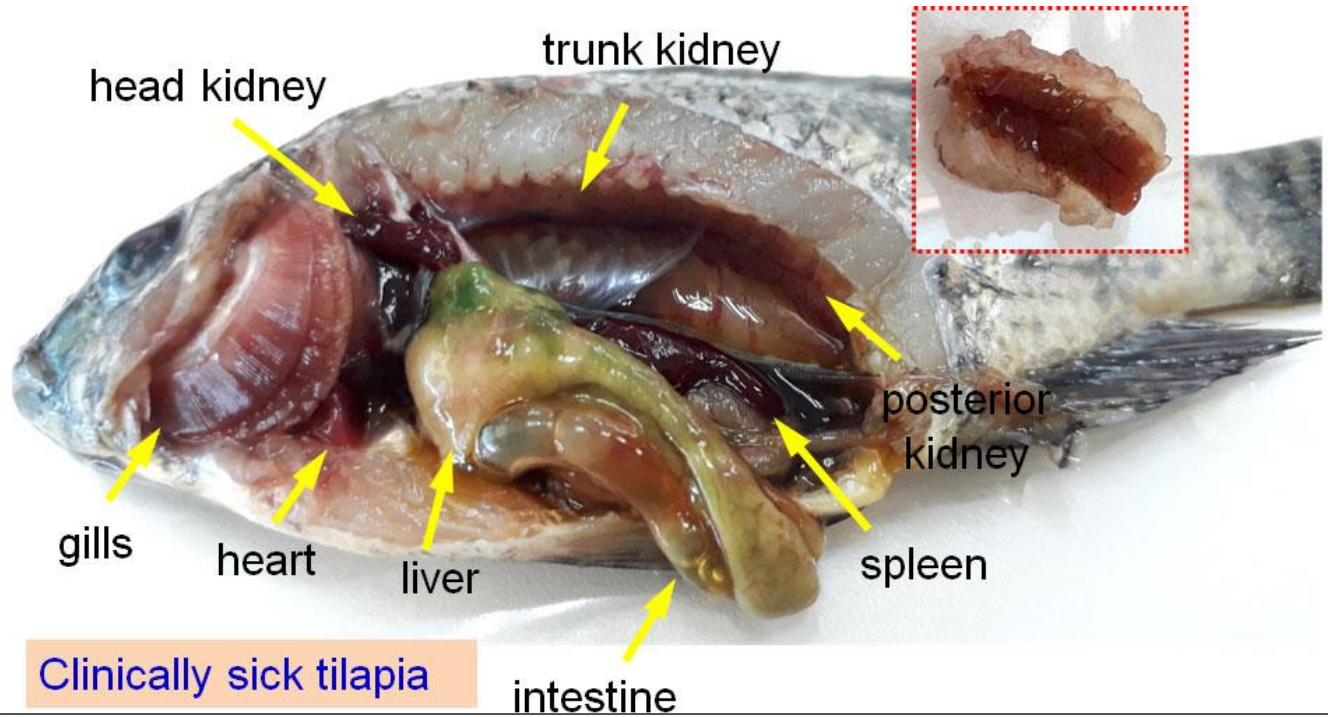


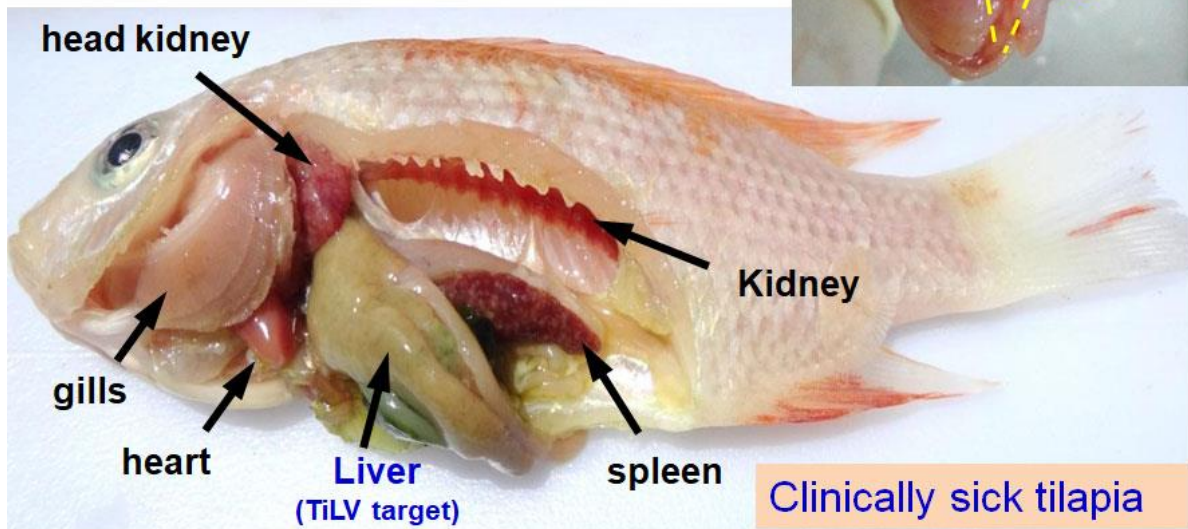
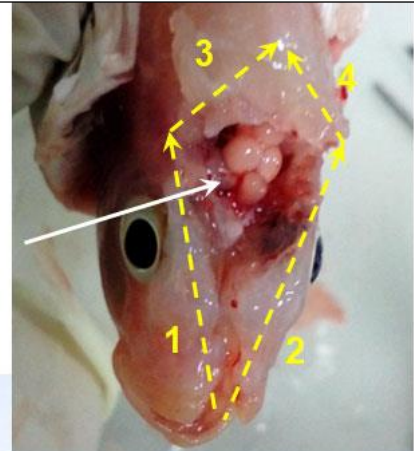
TiLV-infected tilapia



Clinically sick tilapia

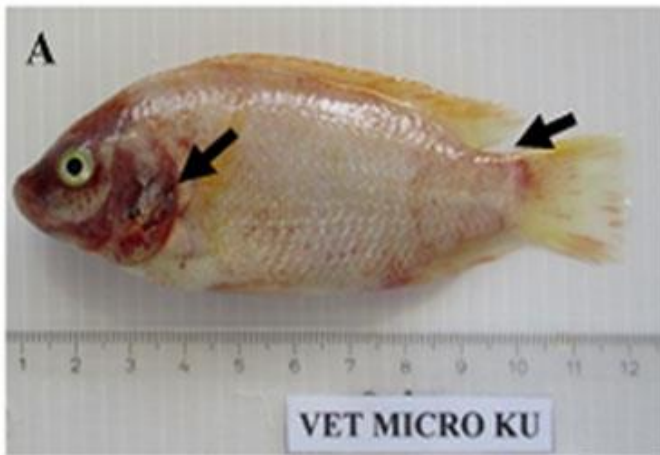
Liver: pale, green, watery; Spleen: swollen; Gills: pale; Gut: ascites; Gallbladder: shrunken

How to collect brain?



Clinically sick tilapia

TiLV-infected tilapia



skin erosion and hemorrhage; loss of scales; exophthalmos and abdominal swelling



Shrinkage of the eye



Abdominal swelling, hemorrhage, loss of scales

