

ASC: Promoting decent working conditions in seafood supply chains

Iain Pollard
FAO Work in Fishing
4th October 2016

Quick Intro to the ASC



- International NGO aiming to minimise the environmental and social footprint of commercial aquaculture
- Seven standards published, one about to be, two to be published next year, all include labour rights and social wellbeing
- ASC supply chains certified to MSC Chain of Custody standard
- Metric-based indicators, results of which available publicly, recording data on wages, social impact assessment, stakeholder consultation



Certified farms

Species	Number	Production volume (mT)
Abalone	3	650
Bivalves	16	8.573
Pangasius	38	212.900
Salmon	148	630.874
Shrimp	55	82.878
Tilapia	40	153.402
Trout	18	9.054
Total	318	1.098.331

Farms in assessment

Species	Number of farms
Abalone	1
Bivalves	23
Pangasius	3
Salmon	48
Shrimp	30
Tilapia	4
Trout	15
Total	124

Market Update

6289 Approved products

58 Countries

992 Valid CoC holders

465 License holders



Products per species

1% Bivalve

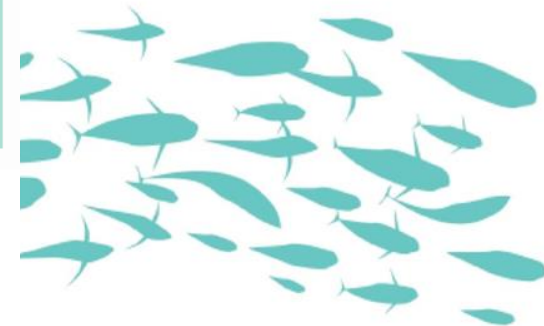
23% Pangasius

36% Salmon

32% Shrimp

5% Tilapia

3% Trout



ASC's social standards



- Not permitted on ASC certified farms:
 - Child Labour
 - Forced Labour
 - Discrimination
 - Abusive disciplinary practices
 - Excessive working hours

- Required on ASC certified farms:
 - Freedom of association
 - Fair and decent wages
 - Health and safety for working and living on the farm



ASC's social standards



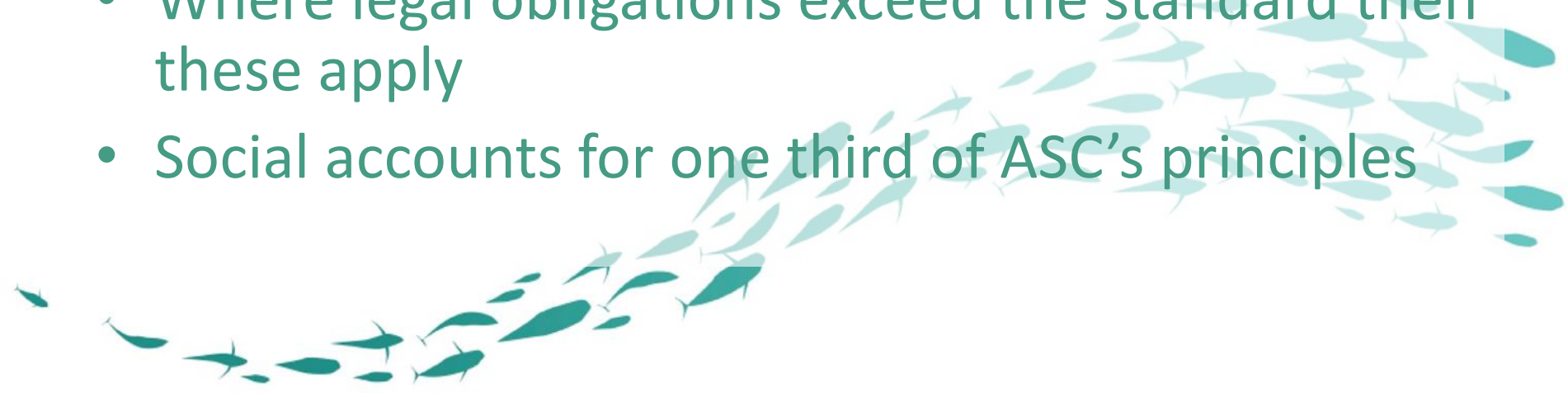
- Required for ASC certified farms:
- Be a good neighbour
- Assessment of the farms social impacts, includes all potential stakeholders e.g. fishermen, neighbours
- Consultation with communities e.g. for farm expansion
- Seek and address stakeholder concerns via a conflict resolution policy
- Allow public access to resources
- Verified by the auditor during community / stakeholder interviews undertaken as part of the audit



How does ASC ensure worker wellbeing?



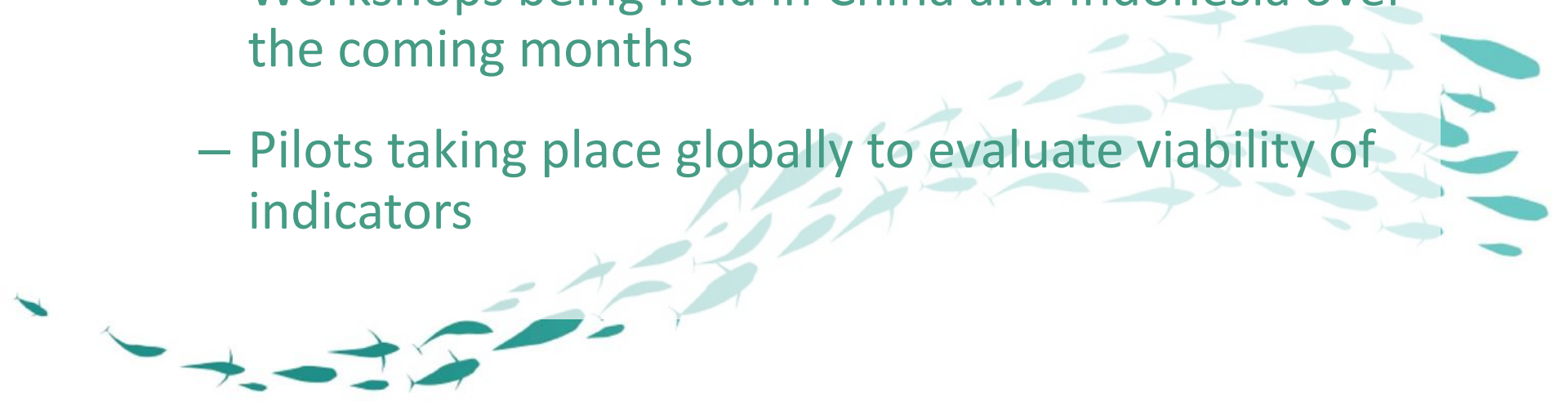
- Social auditor must be a certified Lead Auditor conforming to SA 8000
- Auditor equivalency with Fairtrade and others accepted
- Requirements also consistent with Fairtrade USA's Social standards
- Where legal obligations exceed the standard then these apply
- Social accounts for one third of ASC's principles



Seaweed



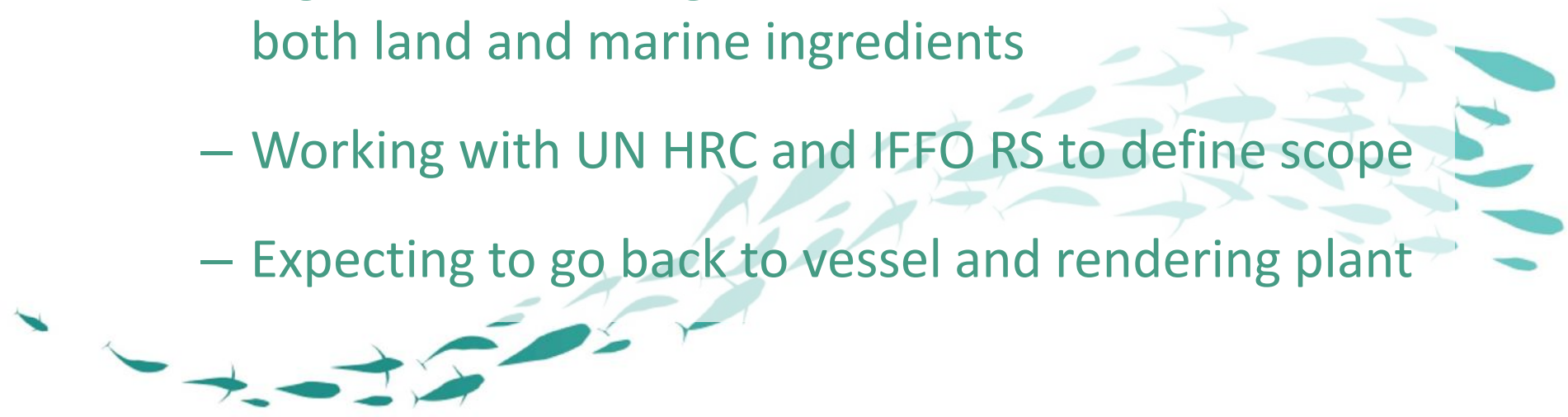
- Seaweed standard development with the MSC
 - Joint collaboration, MSC entry into social
 - ISEAL compliant standard setting process, first public consultation undertaken, second will be in the new year
 - Workshops being held in China and Indonesia over the coming months
 - Pilots taking place globally to evaluate viability of indicators



Fish Feed



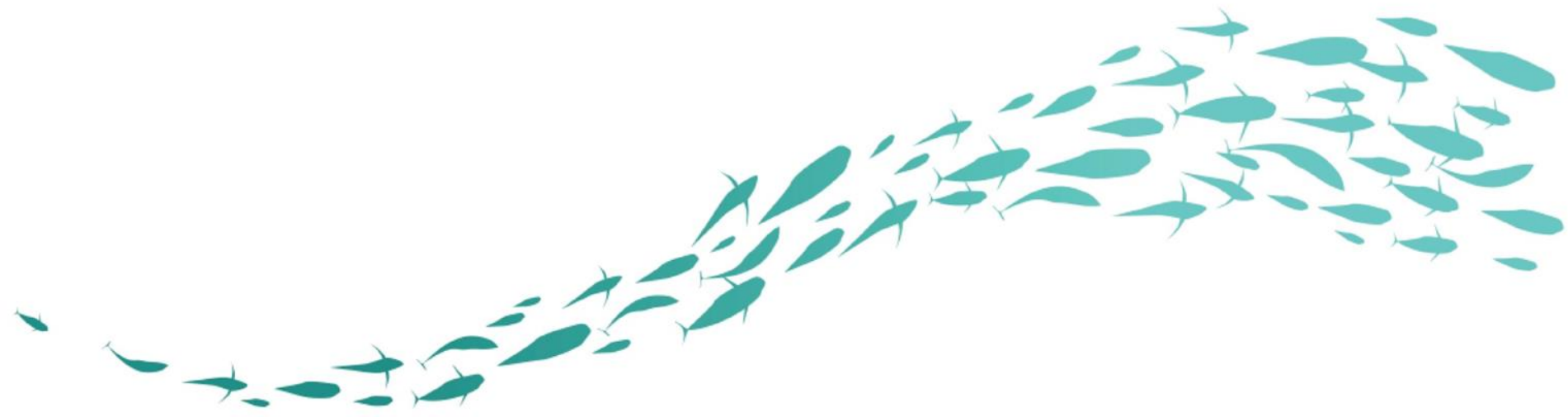
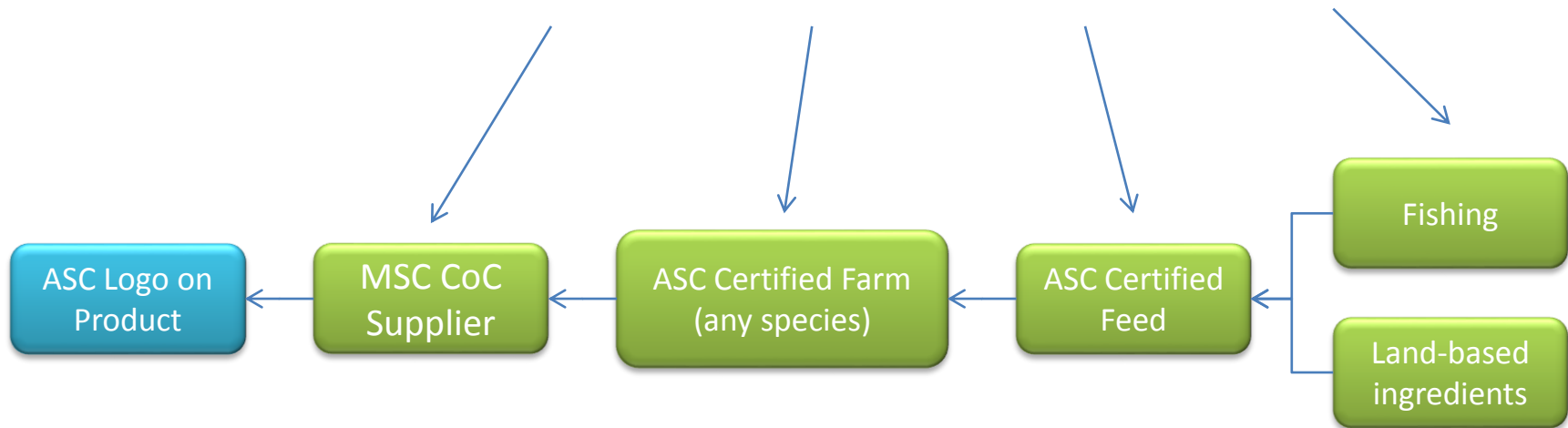
- Feed standard development
 - splits up in 2 parts: mill and ingredients
 - mill: comparable with the farm standards (wages, contracts, no slave/bonded/forced labour, etc.)
 - ingredients, looking at how to include social for both land and marine ingredients
 - Working with UN HRC and IFFO RS to define scope
 - Expecting to go back to vessel and rendering plant



Expanded social compliance in farmed seafood supply chains



Social standards set and audited along supply chain





Thank you!



www.asc-aqua.org



Aquaculture Stewardship Council



@ASC_aqua