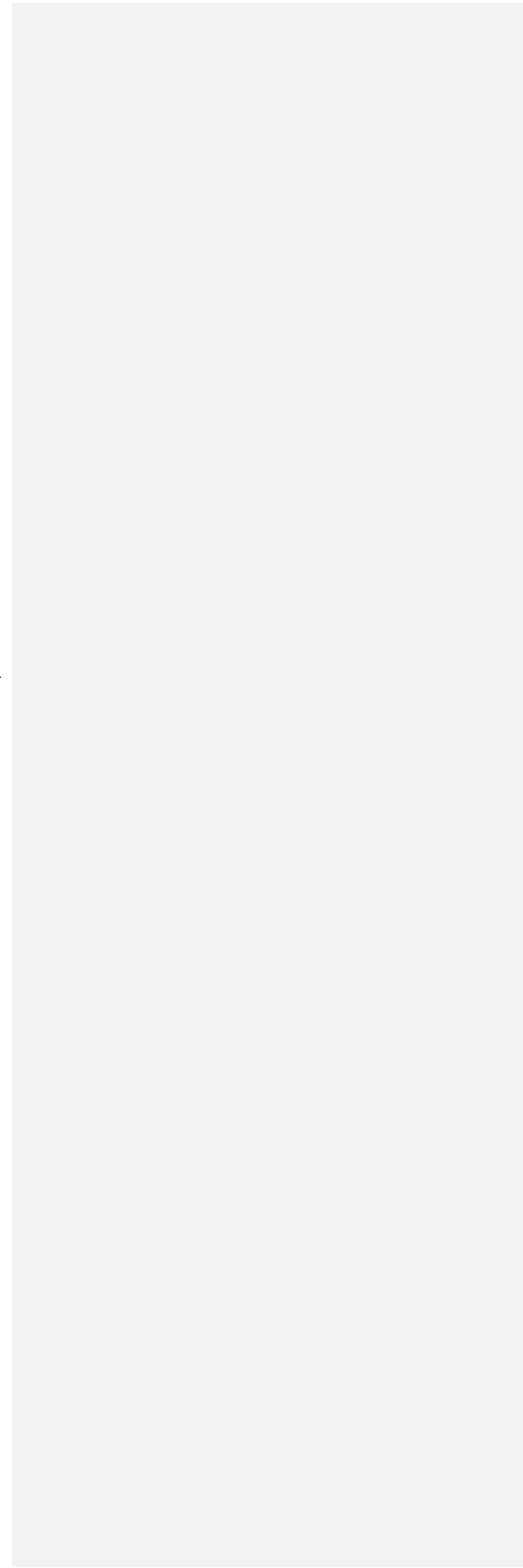




WECAFC Data Collection Reference Framework



Version history

Number	Description	Author	Date (dd/mm/yyyy)
1.0	Creation	Nancie Cummings Yann Laurent	21/04/2017
1.1	Comments	Marc Taconet	14/05/2017
1.2	Comments Add 5x5 grid	Marc Taconet Yann Laurent	29/05/2017
2	Remove the 2 levels approach – back to organization in task (cf. ICCAT or GFCM)	Nancie Cummings Yann Laurent	27/07/2017
2.1	Merge task II.1 and II.2. add employment in socio economics	Marc Taconet Yann Laurent	17/08/2017
2.2	Biological data added	Nancie Cummings June Masters	07/09/2017
3.0	Review and comments	Nancie Cummings Marc Taconet	20/09/2017
4.0	Version ready for distribution to task force	Yann Laurent	03/10/2017
4.1	Review and comments on the tasks	Nancie Cummings June Masters	12/12/2017
5.0	Consolidated version (in progress)	Nancie Cummings June Masters Yann Laurent	24/08/2018
5.1	Review – definitions aligned with new CWP website	David Ramm Nancie Cummings Yann Laurent	02/03/2018
6	Final version for distribution	Yann Laurent	23/04/2018

Table of Content

1	Purpose and Background	1
1.1	About WECAFC	1
1.2	Towards becoming a RFMO	1
1.2.1	Need for fisheries data and statistics in the WECAFC region - Process to build this proposal for a DCF	2
2	Definitions	4
2.1	Working definitions	4
2.2	DCRF related definitions	4
3	Structure of data collection	8
3.1	The different needs for data in the WECAFC region	8
3.2	WECAFC Data Sharing and Access Policies	8
3.3	Components of the Data Collection Framework	9
3.3.1	Task I: Regional Statistics	9
3.3.2	Task II: Catch and effort (landing data, catch data per species, effort)	10
3.3.2.1	Task II.1: Catch	10
3.3.2.2	Task II.2: Effort	12
3.3.2.2.1	Task II.2.1: effort by fleet segment / gear type	12
3.3.2.2.2	Task II.2.2: effort by fishing gear	13
3.3.3	Task III: Fleet	14
3.3.3.1	Task III.1: fleet by primary gear	14
3.3.3.2	Task III.2: Vessel registry	15
3.3.4	Task IV: biological information	16
3.3.4.1	Task IV.1: Size data	16
3.3.4.2	Task IV.2: Catch at Size data	18
3.3.5	Task V: incidental catches	19
3.3.6	Task VI: socio economics	20
3.3.6.1	Task VI.1: employment	20
4	Appendix	21
4.1	Appendix 1: list of WECAFC countries ISO alpha-3 codes	21
4.3	Appendix 2: WECAFC Standard Classifications	24
4.3.1	Appendix 2.1: WECAFC species classifications	24

4.3.1.1	WECAFC Species list	25
4.3.1.1.1	Species of key importance for the region (with regional fisheries management plans)	25
4.3.1.1.2	Tuna and billfishes	26
4.3.1.1.3	Small pelagics	28
4.3.1.1.4	Reef and Groundfish	28
4.3.1.1.5	Shrimp	30
4.3.1.2	WECAFC Vulnerable species	33
4.3.2	Appendix 2.2: Geartype	33
4.3.3	Appendix 2.3: Vessel type	34
4.3.4	Appendix 2.4: Spatial units for fishing zones	36
4.3.4.1	Option 1 for geospatial units: New Statistical Subareas For The Major Fishing Area 31	37
4.3.4.1.1	New Statistical Subareas For The Major Fishing Area 31 (1978 proposal)	37
4.3.4.1.2	WECAFC Working Party on Assessment of Marine Fishery Resources (WPAMSR) proposal for sub areas	40
4.3.4.2	Grid proposal: the 5°x5° square grid proposal	43
4.3.4.3	Discussion on refining subareas	44
4.4	Appendix 3: Effort measurement by fleet segment	45
4.5	Appendix 4: Regional conversion factors	46
4.6	Appendix 5: Questionnaires	46
4.7	Appendix 6: glossary	46

Acronym and Abbreviations

ABNJ	Areas Beyond National Jurisdiction
ASFIS	Aquatic and Science Fisheries Information System
BS	Biological Sampling
CRFM	Caribbean Regional Fisheries Mechanism
CWP	Coordinating Working Party on fishery statistics
DCRF	Data Collection Reference Framework
EU	European Union
FIRMS	Fisheries and Resources Monitoring System
GFCM	General Fisheries Commission for the Mediterranean
GRT	Gross Registered Tonnage
GT	Gross Tonnage
hp	horse power
ICCAT	International Commission for the Conservation of the Atlantic Tunas
IMO	International Maritime Organization
IOTC	Indian Ocean Tuna Commission
IRCS	International Radio Call Sign
ISO	International Organization for Standardization
ISSCFG	International Standard Statistical Classification of Fishing Gears
ISSCFV	International Standard Statistical Classification of Fishery Vessels
IUU	Illegal, Unregulated and Unreported fishing
kW	kilowatt
LOA	Length OverAll
OSPESCA	Organización del Sector Pesquero y Acuícola del Istmo Centroamericano
RFB	Regional Fishery Body
RFMO	Regional Fishery Management Organization
SU	Scientific sUrvey
t-RFMO	tuna Regional Fishery Management Organization
WECAFC	Western Central Atlantic Fishery Commission
WGFDS	Working Group on Fisheries Data and Statistics
WPAMSR	Working Party on Assessment of Marine Fishery Resources

1 Purpose and Background

1.1 About WECAFC

The Western Central Atlantic Fishery Commission (WECAFC) was established in 1973 by Resolution 4/61 of the FAO Council under Article VI (1) of the FAO Constitution. Its statutes were amended by the FAO Council at its Seventy-fourth Session in December 1978 and by the Hundred and Thirty-first Session of the FAO Council in November 2006. WECAFC is a Regional Fishery Body (RFB), which has the mandate to issue fishery management advice, which may be implemented by its members on a voluntary basis. In contrast with Regional Fishery Management Organizations (RFMOs) RFB's do not have the authority to issue binding advice for its members.

Currently the Commission has 34 members, including the European Union. The latest session (16th) convened in 2016 in Guadeloupe, France with 28 members participating. Observers from four Regional Fishery Bodies (RFBs) and four intergovernmental organizations also participated. The Commission adopted five regional fisheries management recommendations respectively on: 1) the regional plan for the management and conservation of Queen conch, 2) spiny lobster management and conservation, 3) the sub-regional fisheries management plan for flyingfish, 4) the management of deep sea fisheries in the high seas, and 5) the management of shrimp and groundfish resources. The Commission also adopted two resolutions on: 1) sea cucumber fisheries management and aquaculture, and 2) Marine Protected Areas as fisheries management tool in the Caribbean.

The 16th Commission agreed to establish a working group for fisheries data and statistics (FDS WG) matters, based on the ongoing work of the WECAFC-FIRMS partnership and supported the development of a regional database in collaboration with the Members and partners in the region.

1.2 Towards becoming a RFMO

The Commission during its 16th session agreed to launch a process to establish a Regional Fisheries Management Organization (RFMO) in the WECAFC area of competence, being the Western Central Atlantic (area 31) and the Northern part of the South West Atlantic (area 41) and to collaborate in fisheries management and conservation in the Areas Beyond National Jurisdiction (ABNJ) of straddling stocks, deep sea fish stocks and highly migratory species that are not under the mandate of ICCAT (International Commission for the Conservation of the Atlantic Tunas). The Commission discussed intersessional

activities of Working Groups and regional collaboration in addressing Illegal, Unregulated and Unreported (IUU) fishing, and approved the Programme of Work (2016–17).

1.2.1 Need for fisheries data and statistics in the WECAFC region - Process to build this proposal for a DCF

WECAFC member countries recognized in the 1970s and 1980s that without the necessary data and information, it would be impossible for the countries in the region to manage their shared fisheries. Following major investments by the countries, with support from the Danish Government (DANIDA) capacity building projects and the FAO/Norway EEZ programme (1982 -1985), the availability of data and information on the status of the stocks and the fisheries improved significantly. However in the 1990s and first decade of this millennium less emphasis was given to fisheries statistics and the need for sharing fisheries data and statistics between states, particularly for use in regional assessments. As a consequence, WECAFC regional scientific working groups on fisheries statistics, stock assessments and fisheries policies and planning, were discontinued after the 2014 Scientific Meeting. This resulted in increasing the existing gaps in very basic information, and made it difficult for fisheries managers and decision makers to make well-informed choices based on data, information and scientific evidence. Compared to the 1990s, fishery managers were faced with much less data for decisions on management and conservation purposes. Accurate stock assessments became increasingly difficult, and the rapid increase in Fish Aggregating Devices (FADs) fisheries has exacerbated the situation. As a result, fishery management is challenging and decisions are postponed. Consequently, the stocks of many shared and highly migratory species, such as billfishes, continue to be heavily exploited and increasingly targeted for harvest even though they are already depleted well below biomasses that could achieve maximum sustainable yields.

Furthermore, the commitment of CARICOM States to improving evidence based decision-making through regional cooperation has been clearly articulated in several regional policy documents including the “Strategic Action Programme for the Caribbean Large Marine Ecosystem”, the CARICOM Strategic Plan, 2015 -2019, the Caribbean Community Common Fisheries Policy (CCCFP) and the CRFM Strategic Plan, 2013-2021. Concrete action in this direction led to establish the WECAFC-FIRMS partnership in 2014 which among other results led to the establishment of WECAFC Data and Statistics Working Group. Moreover, data and information on some key commercial fisheries target species (Spiny lobster, Queen conch, Flying fish) are being shared between the members of CRFM, OSPESCA and WECAFC, through joint working groups on these specific fisheries.

At WECAFC 15 which was convened in Trinidad in March 2014, the minimum steps needed to improve the capability of the Commission in becoming a functional management organization were identified as

1. Increase and improve information content on fisheries data and statistics
2. Increase accuracy of data and statistics via utilizing agreed practices in data collection
3. Develop and implement agreed practices for data sharing
4. Identify feasible stock assessment models for the region

As a decisive step into this Focus Area, the WECAFC 15 agreed to enter into a collaboration with the FAO, Fishery Resource Monitoring Program (FIRMS), thus formally engaging the WECAFC-FIRMS Partnership recognizing the need to make these regional improvements in the basic fisheries data. This Partnership was successfully implemented in 2015 and 2016 during the WECAFC-FIRMS Regional Database project (phase I). The three main outputs which were successfully achieved respectively were: output 1: FIRMS regional inventories published and capacity built for national inventories in a few pilot countries, output 2: National and sub-regional capacity strengthened in data collection and data sharing in support to WECAFC fishery management plans, and output 3: Foundations of a Regional Database proposed and tested with pilot data contributions. A regional data workshop was convened in January of 2016 and the report of the workshop is available on-line¹.

WECAFC-FIRMS phase II is a continuation of the WECAFC-FIRMS project and is primarily supporting the mandate of the Working Group on Fisheries Data and Statistics (WGFDS), agreed by the Members during WECAFC 16th Commission Session which convened in Guadeloupe in June 2016. The support is focusing on agreements regarding minimum data requirements for fisheries under management plans, and on the governance and operationalization of the WECAFC Regional Database.

The WECAFC Data Collection Reference Framework (DCRF) is a key document drafted under WECAFC-FIRMS Phase II and lays the foundation of fisheries data and statistics collection and collation to feed the needs of developing, monitoring, assessing and reviewing regional fisheries policies such as FMPs as required by any RFMO. In that regard, inspiration was sought from other RFMOs DCFs (e.g., the General Fisheries Commission for the Mediterranean (GFCM) (2016 GFCM Data Collection Reference Framework²) and from International Commission for the Conservation of the Atlantic Tunas (ICCAT)³.

¹ <http://www.fao.org/3/a-i5789e.pdf>

² <http://www.fao.org/gfcm/data/dcrf/en/>

³ <https://www.iccat.int/en/submitSTAT.htm>

2 Definitions

A glossary is available in appendix 6 with all the concepts and controlled terms definitions presented in alphabetical order

2.1 Working definitions

Fish: The term “fish” refers to all species of living marine resources, whether processed or not. (Port State Measures Agreement - PSMA⁴)

Species: The term ‘species’ is also used herein in the broad sense and refers to both individual species (e.g.: *Epinephelus striatus*, Nassau grouper) and species groups (e.g.: *Epinephelus* spp., Groupers).

Species group: The term ‘species group’ refers to a collection of species which have been grouped together, often because these species are difficult to differentiate without detailed examination (very similar species) or because data for the separate species are not available (e.g. in fishery statistics or commercial categories). (SEAFDEC handbook on data collection⁵)

2.2 DCRF related definitions

Fishery fleet (CWP⁶): The term "fishery fleet" or "fishery vessels" refers to mobile floating objects of any kind and size, operating in freshwater, brackish water and marine waters which are used for catching, harvesting, searching, transporting, landing, preserving and/or processing fish, shellfish and other aquatic organisms, residues and plants.

Fishing vessel (CWP⁸): The term "fishing vessel" refers to a vessel which is engaged only in catching operations.

Non-fishing vessel (CWP⁸): The term "non-fishing vessel" applies to vessels performing other functions related to fisheries, such as supplying, protecting, rendering assistance or conducting research or training.

Fishing gear (FAO⁷): Equipment used for fishing according to the international standard classification revised version (ISSCFG Rev1, 2010⁸). Each gear can have multiple configurations.

Catch and landings: These guidelines follow the advice of the CWP on catch and landings⁹. The CWP advises that the overall aim for statistics on catch and landings is to report on fisheries contribution

⁴ <http://www.fao.org/fishery/psm/agreement/en>

⁵ <http://www.seafdec.org/download/handbook-on-collecting-fishery-statistics/#>

⁶ <http://www.fao.org/cwp-on-fishery-statistics/handbook/capture-fisheries-statistics/fishery-fleet/en/>

⁷ <http://www.fao.org/cwp-on-fishery-statistics/handbook/capture-fisheries-statistics/fishing-gear-classification/en/>

⁸ <http://www.fao.org/3/a-bt987e.pdf>

⁹ <http://www.fao.org/cwp-on-fishery-statistics/handbook/capture-fisheries-statistics/catch-and-landings/en/>

to the national economy, to the provision of food (subsistence) and on the total removal of fish and other organisms from the sea. Catch statistics are internationally reported as nominal catch (see definition below) which refers to the landings converted to a live weight basis. However, fisheries impact on the ecosystem goes beyond the landed fish and other organisms and includes species impacted by the gear. Some of these species are brought on deck and later discarded. The various components of the catch are described in the CWP catch concept diagram (Figure 1). There are fisheries where the number of individuals caught is also required to be reported.

National and Regional fisheries organizations publish annually catch statistics in different forms. These statistics are available from the websites of these organizations. FAO publishes global fisheries statistics. These statistics are summarized in "FAO Statistical Yearbooks" and are available in more details from the FAO Fisheries and Aquaculture Statistics website. When using published catch and landing statistics it is to be recognized that non-reporting of landings is a major concern in some fisheries.

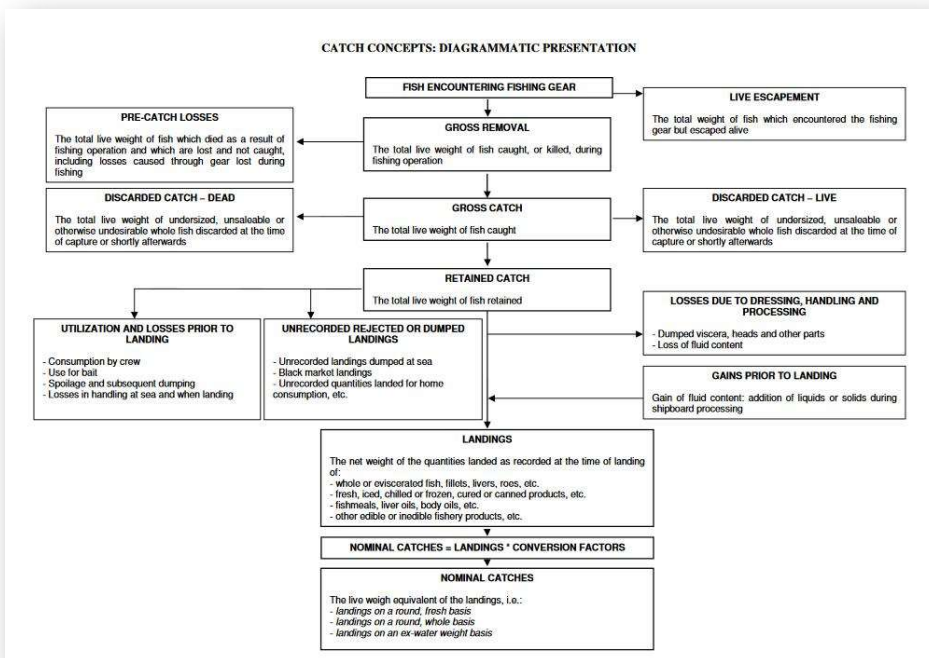


Figure 1: CWP diagrammatic representation of catch concepts. From CWP Handbook¹⁰

Live weight: The term ‘live weight’ refers to the weight of fish or other organisms when brought on board alive and prior to processing.

¹⁰ <http://www.fao.org/3/bt981t/bt981t.pdf>

Retained catch (CWP¹¹): The term ‘retained catch’ refers to the component of the catch which is retained on board the fishing vessel (refer to the catch concept diagram, Fig. 1). The retained catch is reported as total live weight of fish and other organisms retained and in some fisheries the number of individuals retained is also required to be reported.

Discarded catch (CWP¹¹): The term ‘discarded catch’ (or discards) refers to the component of the catch which is discarded overboard (refer to the catch concept diagram, Fig. 1). The discarded catch is the total live weight of undersized, unsaleable or otherwise undesirable whole fish discarded at the time of the capture or shortly afterwards. Discarded fish and other organisms may be discarded dead or alive, and may include species taken as bycatch.

Bycatch (FAO): Part of a catch taken incidentally in addition to the target species towards which fishing effort is directed. Some or all of the bycatch may be returned to the sea as discards, usually dead or dying (i.e. injured).

Post Release Mortality (FAO): This term refers to the quantity (commonly an average expected percentage) of the catch which is discarded alive, but will die in the immediate or long term due to various harmful effects of the capture and/or discarding processes.

Incidental catch: to be defined

Landing (CWP¹¹): The net weight of the quantities landed as recorded at the time of landing, including:

- Whole or eviscerated fish, fillet, livers, roes, etc.
- Fresh, iced, chilled or frozen, cured or canned products etc
- Fishmeals, liver oils, body oils etc
- Other edibles or inedibles fishery products, etc.

Landed weight (CWP¹¹): The term ‘landed weight’ refers to the mass (often referred to as weight) of a product at the time of landing, regardless of the state in which it is landed. That is, the fish may be whole, or gutted or filleted. Consequently this measure is of limited use for further analysis except where it is known that the product is homogenous in nature. Where more detailed analysis of the data is required, the landed weight is generally converted to a more meaningful measure, the most frequently used being the "nominal catch" (see below).

Nominal catch (CWP¹¹): The term ‘nominal catch’ refers to the landings converted to a live weight basis. Nominal catch is often referred to as the "Live weight equivalent of the landings" or shortened to the "Live weight", and in some national publications it is also referred to as "Landings on a round, fresh basis", "Landings on a round, whole basis" or "Landings on an ex-water basis". Care should be taken when referring to the nominal catch as the ‘catch’ since in many situations the catch includes components which are not landed (refer to the catch concept diagram, Fig. 1).

Nationality of catch and landings (CWP¹¹): For the purpose of reporting national fishery statistics, the catch and landings is generally assigned to the country of the flag flown by the fishing vessel. However, the CWP recommended that this may be over-ridden only when one of the following arrangements between a foreign flag vessel and the host country exists: the vessel is chartered by the host country to augment its fishing fleet; or the vessel fishes for the country by joint venture contracts or similar agreements (as opposed to the ad-hoc practice of a vessel selling catches to a foreign vessel or landing catches at a foreign port) and the operation of such vessel is an integral part of the economy

of the host country. In either case, the assignment of nationality to catch and landings data should be specified in the charter or joint-venture agreements.

Fleet Capacity (draft): the term ‘fleet capacity’ refers to a nominal measure of the capacity of a fleet of fishing vessels’ to conduct fishing activities. For statistical purposes, fleet capacity may be summarized by fishing vessel tonnage or type based on two international classifications adopted by the CWP:

1. The "International Standard Statistical Classification of Fishery Vessels by GRT Categories" (ISSCFV), based on the Gross Register Tonnage of the vessels, approved by the CWP in 1977. See ISSCFV GRT classification ¹¹
2. The 'International Standard Statistical Classification of Fishery Vessels by Vessel Types' (ISSCFV), based on the type of gear used by the vessels, approved by the CWP in 1984¹².

Fishing effort (CWP¹³): The term ‘fishing effort’ refers to the amount of fishing gear of a specific type used on the fishing grounds over a given unit of time e.g. hours trawled per day, number of hooks set per day or number of hauls of a beach seine per day. The impact of an effort unit on the fish populations and the ecosystem in general differs with the vessel that deploy the gear and effort statistics need to be qualified by vessel type and size/motor power.

The CWP advised that fishing effort should be reported at three levels of precision:

- Category A refers to a detailed unit of measure, e.g. hours fished or number of sets, etc. These units of measure will vary with the gear used;
- Category B refers to "number of days fished", i.e., the number of days on which fishing took place. For those fisheries in which searching is a substantial part of the fishing operation, days in which searching but no fishing took place should be included in "days fished" data;
- Category C refers to "number of days on ground" in addition to days fishing and searching also all other days while the vessel was on the ground should be indicated.

The effort may be nominal, reflecting the simple total of effort units exerted on a stock in a given time period. It may also be standard or effective when corrected to take account of differences in fishing power and efficiency and ensure direct proportionality with fishing mortality and this relates usually to a specific fishery and gear. If more than one gear is considered, standardization in relation to one of them is necessary. For biologists, a good measure of fishing effort should be proportional to fishing mortality. For economists it should be proportional to the cost of fishing.

Reference year: The term “reference year” refers to the calendar year (1 January to 31 December) for which statistics are reported as recommended by CWP¹⁴ for standard reporting timelines.

¹¹ <http://www.fao.org/3/a-bt982e.pdf>

¹² <http://www.fao.org/3/a-bt983e.pdf>

¹³ <http://www.fao.org/cwp-on-fishery-statistics/handbook/capture-fisheries-statistics/fishing-effort/en/>

¹⁴ <http://www.fao.org/fishery/cwp/handbook/E/en>

3 Structure of data collection

3.1 The different needs for data in the WECAFC region

Needs for data at the level of the WECAFC are of varying natures. Stock assessment comes as a key need especially for the shared stocks such as flying fish. It is also essential to provide evidence based statistics to support monitoring and management of shared fishery resources (implementation and monitoring of regional fishery management plans, implementation of regional registry as two of many examples). Finally a set of minimum statistics are required to take into account the social and economic dimensions in policy making and management decisions.

To respond to these different needs, the WECAFC data collection framework is divided in six (6) tasks

- **Task I: Regional figures:** provide an overview of the fishery sector in the region (e.g., total nominal catches, total effort, total capacity by reference year...)
- **Task II: Catch and effort:** provide key information for fisheries monitoring, management and assessment (e.g. nominal catches (target and by-catch species), retained and discarded (dead and live) catch estimates, by fishing fleet, species, year, gear, region, fishing waters; Effort by fleet segment or by gear).
- **Task III: fleet.** Provide additional information for fisheries monitoring, management and assessment with the fleet capacity by size categories ; it also provides the framework for the regional vessel registry as per the regional fishery management plans
- **Task IV: Biological information:** provide essential information for stock assessment (e.g., Size frequencies of the samples measured for each species classified by fishing fleet, species, gear, sample units, time strata, area strata or reproductive state of individuals)
- **Task V: Incidental catches on vulnerable species.** provide more detailed information on fisheries impacts on the ecosystem.
- **Task VI: socio economic:** The importance of this task is acknowledged. As a start, gender sensitive employment statistics will be collected from Member Countries. In line with CWP recommendation, this task will expand in the next iterations with the proposal to include the Value of Landings.

Aquaculture is not considered here and shall be subject to another data collection framework document.

3.2 WECAFC Data Sharing and Access Policies

All data when submitted are publicly available.

All data transmission are subject to WECAFC data sharing and access policy as defined in the document “WECAFC fisheries data sharing policies and guidelines”¹⁵.

¹⁵ Link here (not yet available)

3.3 Components of the Data Collection Framework

3.3.1 Task I: Regional Statistics

Description

This task aims to provide to WECAFC an overview of the fishery sector in the Caribbean region. Data reported in this task are a sum of other indicators available in the following tasks. Total must be aligned between tasks for nominal catches and effort.

Countries involved

All WECAFC countries

Data (mandatory)

Field	Definition
Country	The alpha-3 ISO code for the country (see appendix 1)
Year	Reference year for reporting
Quarter	Optional (if available in the country member)
Fleet Segment	Define each fleet segment in the country by taking into account fishing gear group, major base port/areas, time unit) and categorized by length class and major species caught and give the number of vessels in the different Fleet segments. (see appendix for appropriate definitions)
Operating Fishing Vessel Count	Total number of operating fishing vessels during the reference year
Total Nominal Catch	Total Nominal Catch (landings converted to live weight) or landed species target and bycatch species from all fishing vessels during the reference year, including recreational and commercial fishery sectors
Total Effort	Total number days fished by all operating fishing vessels in the reference year including recreational and commercial fishery sectors
Total Capacity (GT)	Total capacity, in gross tonnage (GT), of all operating fishing vessels by length class
Total Engine Power (kW)	Total main? engine power, in kilowatt (kW) ⁽¹⁾ , of all operating fishing vessels by length class

⁽¹⁾ 1 hp = 0.7457 kW

Frequency and deadline of transmission

Once a year before the end of the first semester of the following year.

Data access and sharing (see section 3.2)

3.3.2 Task II: Catch and effort (landing data, catch data per species, effort)

3.3.2.1 Task II.1: Catch

Description

Catches are defined as all the removed fish during the fishing activities whether targeted or taken as by-catch. Thus, the term “catches” encompasses retained fractions (supposedly all landed) and the discarded fraction. (See definitions, section 2)

Catches are defined as the total weight of catches per species, area, fleet segment for the given year.

Weight is defined as live equivalent (see appendix 4 for regional conversion factors - when available, national conversion factors should be shared with WECAFC).

The reporting of Catch is mandatory for all priority species; if additional data are available for other species, these may be reported using the scientific name and the ASFIS 3 alpha code.

Countries involved

All WECAFC countries - and where relevant, Countries of distant fleet fishing as flagged vessels of member countries in WECAFC area

Data (mandatory)

Field	Definition
Country	The alpha-3 ISO code for the country (see appendix 1)
Year / Month	Reference year for reporting
Fleet Segment / Gear	See appendix 2.3 for fleet segment definition
Area	See appendix 2.4 for regional subareas' definition
Species	See appendix 2.1 for the main commercial species (scientific name)
Retained Catch	Weight of retained species, for the commercial species
Discarded Catch	Weight of discarded species, for the commercial species
Nominal Catch	Weight of total landed fish for the given species in live weight equivalent (in metric tonnes)

Frequency and deadline of transmission

Once a year before the end of the first semester of the following year.

Data access and sharing (see section 3.2)

3.3.2.2 Task II.2: Effort

3.3.2.2.1 Task II.2.1: effort by fleet segment / gear type

Description

Effort will reflect the national fleet effort deployed during the reporting period to catch the above reported catches (and landings).

Countries involved

All WECAFC countries

Data (mandatory)

Field	Definition
Country	The alpha-3 ISO code for the country (see appendix 1)
Year / Month	Reference year and month for reporting
Fleet Segment / Gear	See appendix 2.3 for fleet segment definition
Area	See appendix 2.4 for regional subareas' definition
Target species	See appendix 2.1 for the main commercial species (scientific name)
Days Fishing	Number of days spent fishing for the fleet segment for the reporting period
Capacity	Sum of capacity value (GT or Net length) per fleet segment and per area (see appendix 2.3 and 2.4)
Nominal Effort	Value of Nominal effort per fleet segment and per area (see appendix 2.3 and 2.4)
Fishing Vessel Count	Total number of vessel operating for this fleet segment during the reference year

Frequency and deadline of transmission

Once a year before the end of the first semester of the following year.

Data access and sharing (see section 3.2)

3.3.2.2.2 Task II.2.2: effort by fishing gear

Description

Effort will reflect the national fleet effort deployed during the reporting period to catch the catches (and landings) reported in task II.1.

Countries involved

All WECAFC countries

Data (mandatory)

Field	Definition
Country	The alpha-3 ISO code for the country (see appendix 1)
Year / Month	Reference year and month for reporting
Gear	See appendix 2.2 for gear classification
Area	See appendix 2.4 for regional subareas' definition
Days Fishing	Number of days spent fishing for gear and area during the reference year

Frequency and deadline of transmission

Once a year before the end of the first semester of the following year.

Data access and sharing (see section 3.2)

3.3.3 Task III: Fleet

3.3.3.1 Task III.1: fleet by primary gear

Description

Number of vessels engaged in the fishery (i.e. active) by year, by primary gear and by fishing area and time unit

Countries involved

All WECAFC countries

Data (mandatory)

Field	Definition
Country	The alpha-3 ISO code for the country (see appendix 1)
Year	Reference year for reporting
Gear	See appendix 2.2 for gear classification
Area	See appendix 2.4 for regional subareas' definition
Number	Number of active vessel for the considered gear during the reference year

Frequency and deadline of transmission

Once a year before the end of the first semester of the following year.

Data access and sharing (see section 3.2)

3.3.3.2 Task III.2: Vessel registry

Provision has been made in the regional fishery management plan to create a regional vessel registry fed by the national vessel records or registries.

The minimum set of information required is as recommended by the WECAFC IUU working in its second meeting (Barbados, Sept 2017):

Vessel information	Mandatory / Optional	Definition
Unique identifier		WECAFC vessel unique identifier
Name	M	Current Vessel Name
Registration Number	M	National Vessel Registration Number
Home Port (Registration Port)	M	Vessel Home Port Name
Owner(s)	M	Name of the current vessel owners
Flag	M	Current Vessel Flag (country of vessel registration)
Operational status	M	Is the status of the vessel: active, decommissioned, sunk etc...
IMO ^(*)	O	International Maritime Organization Number
IRCS ^(*)	M	International Radio Call Sign
LOA (m) ^(*)	M	Length OverAll is the extreme length from one end to the other
Draft (m)	O	Is the vertical distance from the bottom of the keel to the waterline.
Beam (m)	O	is the width of the hull
GT (t) ^(*)	O	Gross Tonnage
GRT (t) ^(*)	O	Gross Registered Tonnage
Main engine Power (kW)	M	Power of the vessel main engine (in-board or outboard)
Hull type	O	Type of the watertight body of the vessel (steel, aluminum, fiber glass, wood,
Vessel Type	M	Type of fishing vessel according the regional classification
Year of construction	M	Year of the original vessel construction
Location of construction	O	Location of the vessel shipyard
Image	M	Image of the vessel (with registration number)
Previous flag(s)	O	Previous country(ies) of vessel registration
Previous name	O	Previous vessel name
Beneficial owner	O	Name of the vessel beneficial owner

3.3.4 Task IV: biological information

3.3.4.1 Task IV.1: Size data

Description

Size frequencies of the samples measured for each species classified by major fleet, gear sample units, time strata and area strata and sex for select species.

Countries involved

All WECAFC countries when data are available

Data (mandatory for vulnerable species or endangered, threatened or protected species)

Field	Definition
Country	The alpha-3 ISO code for the country (see appendix 1)
Year / Month	Reference year for reporting and by month if available
Fleet Segment / Gear	See appendix 2.3 for fleet segment definition and 2.2 for gear
Area	See appendix 2.4 for regional subareas' definition
Source of data	Source of data: Port sampling from scientists (PS) or Scientific Research Survey (SU), Observer (OBS), Self-reported
Species	See appendix 2.1 for the main commercial species and vulnerable species (Scientific name)
Total Retained Catch (weight)	Weight of retained species, for the commercial species
Total discarded catch	Weight of discarded species, for the commercial species
Sample design	Type of sample design employed in obtaining sample (random, systematic, stratified)
Total weight of samples	Weight of sampled species
Length class /sex/maturity	Length class in 1 cm units and sex with the stage

Field	Definition
	of maturity where appropriate
Number of individual at length	Total number of fish for the given length class and sex (for selected species)
Total weight of Individuals	Total weights of individuals in length class + indicate unit (e.g. grams or kilograms).
Was length class retained?	Y/N

To be discussed during the FDS WG: how to include on bias type- will need to know if the sample is a random sample or a market sample (sorted by class- e.g., certain weight groups) or a systematic sample or stratified sample (e.g., stratified by some class (e.g., length, gear, FAD unit))

Frequency and deadline of transmission

Once a year before the end of the first semester of the following year.

Data access and sharing (see section 3.2)

3.3.4.2 Task IV.2: Catch at Size data

Description

Reported catch at size (raised to Task II Catch data) classified by primary fleet, gear, species time unit and area and by sex (for select species)

Countries involved

All WECAFC countries

Data (mandatory)

Field	Definition
Country	The alpha-3 ISO code for the country (see appendix 1)
Year/Month	Reference year for reporting and by month if available
Fleet Segment / Gear	See appendix 2.3 for fleet segment definition and 2.2 for gear
Species	See appendix 2.1 for the main commercial species and vulnerable species (Scientific name)
Length Class/Sex/Stage of Maturity	Total catch by length class in 1 cm units and sex Length class in 1 cm units and sex with the age of maturity where appropriate
Total Weight of Individuals	Total weight of Individuals in length class, indicate units (e.g. grams or kilograms).
Total Catch	Total number individuals (raised to task II catch) for length of the entire catch by fleet, gear, month, area

To be discussed during the FDS WG: discuss what other information to ask for – proportion vessels sampled by major fleet, gear area time unit, since we have total number of vessels then will have the raising factor. Or, the country could carry out raising using weight instead of number of trips so we will need to have both options available. Also, for observer trips will need to know effort for raising

Frequency and deadline of transmission

Once a year before the end of the first semester of the following year.

Data access and sharing (see section 3.2)

3.3.5 Task V: incidental catches

Description

These discards resulting from incidental catches are reported for vulnerable species and for other species.(see appendix 2.1)

To be discussed during the FDS WG: define incidental catches and identify bycatch species for the main fisheries: a proposal is to submit an inquiry to each country seeking a list of the most commonly discarded species

Countries involved

All WECAFC countries when data are available

Data (mandatory for vulnerable species)

Field	Definition
Country	The alpha-3 ISO code for the country (see appendix 1)
Year / Month	Reference year for reporting
Fleet Segment / Gear	See appendix 2.3 for fleet segment definition and 2.2 for gear
Area	See appendix 2.4 for regional subareas' definition
Species	See appendix 2.1 for vulnerable species (Scientific name)
Landings (in numbers or weight as appropriate)	Number and estimated weight landed
Number of discards alive (in numbers or weight as appropriate)	Number of discards and estimated weight for alive fish
Number of discards dead (in numbers or weight as appropriate)	Number of discards and estimated weight for dead fish

Frequency and deadline of transmission

Once a year before the end of the first semester of the following year.

Data access and sharing (see section 3.2)

3.3.6 Task VI: socio economics

3.3.6.1 Task VI.1: employment

Description

Employment in the fishery sector is a useful indicator of the importance of the fishery sector in the region. This indicator aims to present number of fishers by category (fully employed or part time ones), by gender (male / female) by the major fleet, and area for the reference year.

Countries involved

All WECAFC countries

Data (mandatory)

Field	Definition
Country	The alpha-3 ISO code for the country (see appendix 1)
Year	Reference year for reporting
Fleet Segment / Gear	See appendix 2.3 for fleet segment definition and 2.2 for gear
Area	See appendix 2.4 for regional subareas' definition
Gender	Male or Female
Category	Full-time fisher / part-time fisher by major fleet and area
Count of fishers	Number of fisher for the considered gender / category
Others?	<i>To be discussed during the FDS WG 1rst meeting</i>

Frequency and deadline of transmission

Once a year before the end of the first semester of the following year.

Data access and sharing (see section 3.2)

To be considered in addition: port / Age group

4 Appendix

4.1 Appendix 1: list of WECAFC countries ISO alpha-3 codes¹⁶

Name	Alpha-3 ISO code
Anguilla	AIA
Antigua and Barbuda	ATG
Bahamas	BHS
Barbados	BRB
Belize	BLZ
Brazil	BRA
Colombia	COL
Costa Rica	CRI
Cuba	CUB
Dominica	DMA
Dominican Republic	DOM
France	FRA

¹⁶ <https://www.iso.org/iso-3166-country-codes.html>
CWP FAO countries code list: <http://www.fao.org/3/bt978e/bt978e.pdf>

Grenada	GRD
Guatemala	GTM
Guinea	GIN
Guyana	GUY
Haiti	HTI
Honduras	HND
Jamaica	JAM
Japan	JPN
Mexico	MEX
Netherlands	NLD
Nicaragua	NIC
Panama	PAN
Republic of Korea	KOR
Saint Kitts and Nevis	KNA
Saint Lucia	LCA
Saint Vincent/Grenadines	VCT
Spain	ESP
Suriname	SUR

Trinidad and Tobago	TTO
United Kingdom	GBR
United States of America	USA
Rep of Venezuela.	VEN

4.3 Appendix 2: WECAFC Standard Classifications

4.3.1 Appendix 2.1: WECAFC species classifications

Commonalities can be found among the interest expressed for certain species through the establishment of species working groups and of policies within the region.

Two levels of priority importance for species reporting are defined for countries:

- **Priority species:** these are key species to the region with mandatory statistics reporting. These key species are defined as follow:
 - Species with endorsed fisheries management plans (Conch, lobster and Flyingfish)
 - Species with existing mandatory reporting to RFMO (here ICCAT): tuna and tuna like species
 - Species for which a specific working group has been established in one of the sub-regional or regional organization
 - OSPESCA: GT “Sharks and Highly Migratory Species”
 - CRFM:
 - Pelagic Fisheries Working Group (PWG) – small & large pelagics, sport & recreational fishery
 - Reef and Slope Fisheries Working Group (RSWG) - Fish,
 - Queen Conch and Caribbean Spiny Lobster
 - Continental Shelf Fisheries Working Group (CSWG) –
 - Shrimp & groundfish
 - WECAFC
 - CFMC/OSPESCA/WECAFC/CRFM Queen Conch Working Group;
 - CRFM/WECAFC/JICA/IFREMER Working Group on Fisheries using Fish Aggregating Devices (FADs);
 - CRFM/WECAFC Flying fish in the Eastern Caribbean Working Group;
 - WECAFC/CRFM/IFREMER Working Group on shrimp and groundfish of the North-Brazil Guianas shelf
 - OSPESCA/WECAFC Working Group on Sharks
- **Reference list:** if list of reference species by countries are available, countries are encouraged to report for these species lists to WECAFC.

The species classification is defined as followed:

The WECAFC priority and reference species classification refers to the ASFIS classification. This CWP classification is maintained and used by FAO to standardize species of fisheries and aquaculture interest. See <http://www.fao.org/fishery/collection/asfis/en>

The regional species classification is built on the ASFIS structure enriched with regional names in English, Spanish and French

The proposed structure is the following:

- ASFIS unique 3 alpha code (3 Digit) (from ASFIS classification)
- Scientific name (from ASFIS classification)
- FAO Official English name (from ASFIS classification)
- FAO Official French Name (from ASFIS classification)
- FAO Official Spanish Name (from ASFIS classification)
- Regional English Name: to be agreed at regional level
- Regional French Name: to be agreed at regional level
- Regional Spanish Name: to be agreed at regional level

The list of species of major commercial importance defined in the first session of the WECAFC Working Party on Fishery Statistic (1979, in Panama) are also considered in the priority species list (especially for the definition of the shrimp and groundfish species list).

4.3.1.1 WECAFC Species list

Reporting is mandatory for these species.

To be discussed during the FDS WG: make the difference between species mandatory for reporting Vs optional

4.3.1.1.1 Species of key importance for the region (with regional fisheries management plans)

ASFIS code	Scientific name	Reg En Name	Reg Fr Name	Reg Sp Name	FAO En Name	FAO Fr Name	FAO Sp Name
SLC	Panulirus argus	Caribbean spiny lobster	Langouste blanche	Langosta común	Caribbean spiny lobster	Langouste blanche	Langosta común del Caribe
FFV	Hirundicht hys affinis	Flying Fish			Fourwing flyingfish	Exocet hirondelle	Volador golondrina
COO	Strombus gigas	Queen conch	Strombe rose	Cobo rosado	Queen conch	Lambi	Caracol reina

4.3.1.1.2 Tuna and billfishes

ASFIS code	Scientific name	Reg En Name	Reg Fr Name	Reg Sp Name	FAO En Name	FAO Fr Name	FAO Sp Name
BFT	Thunnus thynnus	Northern bluefin tuna	Thon rouge	Atún	Atlantic bluefin tuna	Thon rouge de l'Atlantique	Atún rojo del Atlántico
YFT	Thunnus albacares	Yellowfin tuna	Thon albacore	Rabil	Yellowfin tuna	Albacore	Rabil
ALB	Thunnus alalunga	Albacore	Germon	Atún blanco	Albacore	Germon	Atún blanco
BET	Thunnus obesus	Bigeye tuna	Patudo	Patudo	Bigeye tuna	Thon obèse(=Patudo)	Patudo
SKJ	Katsuwonus pelamis	Skipjack tuna	Listao	Listado	Skipjack tuna	Listao	Listado
BLF	Thunnus atlanticus	Blackfin tuna	Thon à nageoire noire	Atún aleta negra	Blackfin tuna	Thon à nageoires noires	Atún aleta negra
LTA	Euthynnus alletteratus	Little tunny	Thonine	Bacoreta	Little tunny(=Atl. black skipj)	Thonine commune	Bacoreta
BON	Sarda sarda	Atlantic bonito	Pélamide	Bonito atlántico	Atlantic bonito	Bonite à dos rayé	Bonito del Atlántico
FRI	Auxis thazard	Frigate tuna	Auxide	Melva	Frigate tuna	Auxide	Melva
BOP							
WAH	Acanthocybium solandri	Wahoo			Wahoo	Thazard-bâtard	Peto

ASFIS code	Scientific name	Reg En Name	Reg Fr Name	Reg Sp Name	FAO En Name	FAO Fr Name	FAO Sp Name
SSM	Scomberomorus maculatus	Spotted Spanish mackerel	Thazard tacheté	Carite pintado	Atlantic Spanish mackerel	Thazard atlantique	Carite atlántico
KGM	Scomberomorus cavalla	King mackerel	Thazard barré	Carite lucio	King mackerel	Thazard barré	Carite lucio
CER					Cero	Thazard franc	Carite chinigua
BLT	Auxis rochei	Bullet tuna	Auxide	Melva	Bullet tuna	Bonitou	Melva(=Melvera)
BRS	Scomberomorus brasiliensis	Serra Spanish mackerel			Serra Spanish mackerel	Thazard serra	Serra
DOR	Coryphaena hippurus	Mahi Mahi			Common Dolphin fish	Coryphène commune	Lampuga
KGX	Scomberomorus Spp						
Billfishes							
SAI	Istiophorus albicans	Atlantic sailfish			Atlantic sailfish	Voilier de l'Atlantique	Pez vela del Atlántico
BUM	Makaira nigricans	Blue Marlin			Blue Marlin	Makaire bleu	Aguja azul
WHM	Kajikia albida	Atlantic white marlin			White Marlin	Makaire blanc de l'Atlantique	Aguja blanca del Atlántico
SWO	Xiphias gladius	Swordfish			Swordfish	Espadon	Pez espada

Commenté [3]: to be checked not consistent with ASFIS names (from 1978 list)

Commenté [2]: to be checked not consistent with ASFIS names (from 1978 list)

Commenté [1]: to be checked not consistent with ASFIS names (from 1978 list)

ASFIS code	Scientific name	Reg En Name	Reg Fr Name	Reg Sp Name	FAO En Name	FAO Fr Name	FAO Sp Name
SPF	Tetrapturus pfluegeri	Longbill spearfish			Longbill spearfish		
RSP	Tetrapturus georgii	Roundscale spearfish			Roundscale spearfish		

4.3.1.1.3 Small pelagics

ASFIS CODE	Scientific Name	WECAFC English Name	WECAFC French Name	WECAFC Spanish Name	ASFIS en Name	ASFIS Fr Name	ASFIS En Name
AVA	Cetengraulis edentulus	Atlantic anchoveta	Anchois queuejaune	Anchoveta rabo amarillo	Atlantic anchoveta	Anchois queue jaune	Anchoveta rabo amarillo
SAA	Sardinella aurita	Round sardinella (Spanish sardine)	Allache	Sardinela atlantica	Round sardinella	Allache	Alacha
POM	Trachinotus carolinus	Florida pompano	Pompaneau sole	Pámpano amarillo	Florida pompano	Pompaneau sole	Pámpano amarillo
LHT	Trichiurus lepturus	Largehead hairtail	Poisson sabre (de l'Atlantique)	Sable	Largehead hairtail	Poisson-sabre commun	Pez sable

4.3.1.1.4 Reef and Groundfish

• **Groupers**

ASFIS CODE	Scientific Name	WECAFC English Name	WECAFC French Name	WECAFC Spanish Name	ASFIS en Name	ASFIS Fr Name	ASFIS En Name
GPR	Epinephelus morio	Red grouper	Mérou rouge	Mero americano	Red grouper	Mérou rouge	Mero americano

ASFIS CODE	Scientific Name	WECAFC English Name	WECAFC French Name	WECAFC Spanish Name	ASFIS en Name	ASFIS Fr Name	ASFIS En Name
GPN	Epinephelus striatus	Nassau grouper	Mérou raye	Cherna criolla	Nassau grouper	Mérou rayé	Cherna criolla
MAB	Mycteroperca bonaci	Black grouper			Black grouper	Badèche bonaci	Cuna bonaci

• **Snappers**

ASFIS CODE	Scientific Name	WECAFC English Name	WECAFC French Name	WECAFC Spanish Name	ASFIS en Name	ASFIS Fr Name	ASFIS En Name
LJN	Lutjanus analis	Mutton snapper	Vivaneau sorbe	Pargo criollo	Mutton snapper	Vivaneau sorbe	Pargo criollo
LJP	Lutjanus apodus	Schoolmaster snapper	Vivaneau dentchien	Pargo amarillo	Schoolmaster snapper	Vivaneau dentchien	Pargo amarillo
LJU	Lutjanus buccanella	Blackfin snapper	Vivaneau oreille noire	Pargo sesí	Blackfin snapper	Vivaneau oreille noire	Pargo sesí
SNR	Lutjanus campechanus	Northern red snapper	Vivaneau campèche	Pargo del Golfo	Northern red snapper	Vivaneau campèche	Pargo del Golfo
LJY	Lutjanus cyanopterus	Cubera snapper			Cubera snapper	Vivaneau cubera	Pargo cubera
LJI	Lutjanus griseus	Grey snapper			Grey snapper	Vivaneau sardegrise	Pargo prieto
LJJ	Lutjanus jocu	Dogteeth snapper			Dog snapper	Vivaneau chien	Pargo jocú
SNC	Lutjanus purpureus	Southern red snapper	Vivaneau rouge	Pargo colorado	Southern red snapper	Vivaneau rouge	Pargo colorado
SNL	Lutjanus synagris	Lane snapper	Vivaneau gazon	Pargo bijaiba	Lane snapper	Vivaneau gazou	Pargo bijaiba

ASFIS CODE	Scientific Name	WECAFC English Name	WECAFC French Name	WECAFC Spanish Name	ASFIS en Name	ASFIS Fr Name	ASFIS En Name
LTJ	Lutjanus vivanus	Silk snapper	Vivaneau soi	Pargo de lo alto	Silk snapper	Vivaneau soie	Pargo de lo alto
SNY	Ocyurus chrysurus	Yellowtail snapper	Vivaneau queue jaune	Rabirubia	Yellowtail snapper	Vivaneau queue jaune	Rabirubia

4.3.1.1.5 Shrimp

ASFIS CODE	Scientific Name	WECAFC English Name	WECAFC French Name	WECAFC Spanish Name	ASFIS en Name	ASFIS Fr Name	ASFIS En Name
ABS	Penaeus aztecus	Northern brown shrimp	Crevette royale grise	Camarón café norteño	Northern brown shrimp	Crevette royale grise	Camarón café norteño
APS	Penaeus duorarum	Northern pink shrimp	Crevette roché du nord	Camarón rosado norteño	Northern pink shrimp	Crevette rose du Nord	Camarón rosado norteño
SOP	Penaeus notialis	Southern pink shrimp	Crevette roché du sud	Camarón rosado sureño	Southern pink shrimp	Crevette rose du Sud	Camarón rosado sureño
PNT	Penaeus schmitti	Southern white shrimp	Crevette ligubam du sud	Camarón blanco sureño	Southern white shrimp	Crevette ligubam du Sud	Langostino blanco sureño
PST	Penaeus setiferus	Northern white shrimp	Crevette ligubam du nord	Camarón blanco norteño	Northern white shrimp	Crevette ligubam du Nord	Camarón blanco norteño
PNU	Penaeus subtilis	Southern brown shrimp	Crevette café	Camarón café sureño	Southern brown shrimp	Crevette grise du Sud	Camarón café sureño
RRS	Pleoticus robustus	Royal red shrimp	Crevette salicoque	Camarón rojo real	Royal red shrimp	Salicoque royale rouge	Camarón rojo real
SSH	Plesiopenaeus edwardsianus	Imperial red shrimp	-	Gamba carabinero	Scarlet shrimp	Gambon écarlate	Gamba carabinero
PNB	Penaeus brasiliensis	Redspotted shrimp	Crevette royale rose	Camarón rosado con manchas	Redspotted shrimp	Crevette royale rose	Camarón rosado con manchas

WECAFC – Data Collection Reference Framework

BOB	Xiphopenaeus kroyeri	Atlantic seabob	Cevette seabob	Camarón siete barbas	Atlantic seabob	Crevette seabob atlantique	Camarón siete barbas
RSH	Sicyonia brevirostris	Rock shrimp	Crevette ovetgernade	Camarón de piedra	Rock shrimp	Boucot ovetgernade	Camarón de piedra

Reference species ? To be reviewed (these are coming from the 1978 species of high commercial interest)

ASFIS CODE	Scientific Name	WECAFC English Name	WECAFC French Name	WECAFC Spanish Name	ASFIS en Name	ASFIS Fr Name	ASFIS En Name
SCC	Argopecten gibbus	Calico scallop	Peigne calicot	Peine percal	Calico scallop	Peigne calicot	Peine percal
RQZ	Arca zebra	Turkey wing	Arche zèbre	Arca zebra	Turkey wing	Arche zèbre	Arca cebra
BIH	Bairdiella ronchus	Ground croaker	Mamselle rouio	Corvinata ruyo	Ground croaker		
MHG	Brevoortia patronus	Gulf menhaden	Menhaden écailleux	Lacha escarnuda	Gulf menhaden	Menhaden écailleux	Lacha escamuda
MHA	Brevoortia tyrannus	Atlantic menhaden	Menhaden tyran	Laoha tirana	Atlantic menhaden	Menhaden tyran	Lacha tirana
CRB	Callinectes sapidus	Blue crab	Crabe bleu	Cangrejo azul	Blue crab	Crabe bleu	Cangrejo azul
NBR	Caranx bartholomaei	Yellow jack	Carangue grasse	Cojinua amarilla	Yellow jack	Carangue grasse	Cojinua amarilla
CVJ	Caranx hippos	Crevalle jack	Carangue crevalle	Jurel común	Crevalle jack	Carangue crevalle	Jurel común
CXR	Caranx ruber	Bar jack	Carangue comade	Cojinua carbonera	Bar jack	Carangue comade	Cojinúa carbonera
OYM	Crassostrea rhizophorae	Mangrove cupped oyster	Huitre creuse des Caraibes	Ostión de mangle	Mangrove cupped oyster	Huitre creuse des Caraïbes	Ostión de mangle
OYA	Crassostrea virginica	American cupped oyster	Huitre creuse américaine	Ostión americano	American cupped oyster	Huitre creuse américaine	Ostión virgínico
YNA	Cynoscion acoupa	Acoupa weakfish	Acoupa toeroe	Corvineta amarilla	Acoupa weakfish	Acoupa toeroe	Corvinata amarilla
SWF	Cynoscion nebulosus	Spotted weakfish	Acoupa pintade	Corvinata pintada	Spotted weakfish	Acoupa pintade	Corvinata pintada

WECAFC – Data Collection Reference Framework

STG	Cynoscion regalis	Gray weakfish	Acoupa royal	Corvinata real	Squeteague(= Gray weakfish)	Acoupa royal	Corvinata real
YNV	Cynoscion virescens	Green weakfish	Acoupa cambucu	Corvinata cambucú	Green weakfish	Acoupa cambucu	Corvinata cambucú
SPT	Leiostomus xanthurus	Spot croaker	Tambour croca	Verrugato croca	Spot croaker	Tambour croca	Verrugato croca
WKK	Macrondon ancylodon	King weakfish	Acoupa chasseur	Pescadilla real	King weakfish	Acoupa chasseur	Pescadilla real
CKM	Micropogonias furnieri	Whitemouth croaker	Tambour rayé	Corvinón rayado	Whitemouth croaker	Tambour rayé	Corvinón rayado
CKA	Micropogonias undulatus	Atlantic croaker	Tambour brésilien	Corvinón brasileño	Atlantic croaker	Tambour brésilien	Corvinón brasileño
MUF	Mugil cephalus	Striped mullet	Mulet cabot	Lisa pardete	Flathead grey mullet	Mulet à grosse tête	Pardete
MGU	Mugil curema	White mullet	Mulet blanc	Lisa criolla	White mullet	Mulet blanc	Lisa blanca
MUB	Mugil liza	Lebranche mullet	Millet lebranche	Lebranche	Lebranche mullet	Mulet lebranche	Lebranche
THA	Opisthonema oglinum	Atlantic thread herring	Chardin fil	Machuelo hebra atlántico	Atlantic thread herring	Chardin fil	Machuelo hebra atlántico
NLG	Panulirus guttatus	Spotted spiny lobster	Langouste brésilienne	Langosta moteada	Spotted spiny lobster	Langouste brésilienne	Langosta moteada
NUL	Panulirus laevicauda	Smoothtail spiny lobster	Langouste indienne	Langosta verde	Smoothtail spiny lobster	Langouste indienne	Langosta verde
MSL	Perna perna	South American rock mussel	Moule roche sud américaine	Mejillón de roca sudamericano	South American rock mussel	Moule de roche sudaméricaine	Mejillón de roca sudamericano
BDM	Pogonias cromis	Black drum	Grand tambour	Corvinón negro	Black drum	Grand tambour	Corvinón negro
BLU	Pomatomus saltatrix	Bluefish	Tassergal	Anchova de banco	Bluefish	Tassergal	Anjova
RDM	Sciaenops ocellatus	Red drum	Tambour rouge	Corvinón ocelado	Red drum	Tambour rouge	Corvinón ocelado
BIS	Selar crumenophthalmus	Bigeye scad	Selar coulisou	Chicharro ojón	Bigeye scad	Sélar coulisou	Chicharro ojón

WECAFC – Data Collection Reference Framework

MOA	Selene setapinnis	Atlantic moonfish	Musso atlantique	Jorobado lamparosa	Atlantic moonfish	Musso atlantique	Jorobado lamparosa
BAR	Sphyræna spp	Barracuda			Barracudas nei	Bécunes nca	Picudas nep

4.3.1.2 WECAFC Vulnerable species

A similar work should be done to identify a list of priority vulnerable species for which by-catch and discards should be monitored. Also, information on any endangered, threatened, or protected species should be collected.

To be discussed during the FDS WG: make the difference between species mandatory for reporting Vs optional

Sharks (Major Species)

ASFIS CODE	Scientific Name	WECAFC English Name	WECAFC French Name	WECAFC Spanish Name	ASFIS en Name	ASFIS Fr Name	ASFIS En Name
SMA	Isurus oxyrinchus	Shortfin mako	Taupe bleue				
POR	Lamna nasus	Porbeagle	Requin-taupe commun				
BSH	Prionace glauca	Blue shark	Peau bleue				

4.3.2 Appendix 2.2: Geartype

We recalled here the conclusion on geartype of the first Working Party on Statistics meeting (1978): "The Working Party reviewed the International Standard Statistical Classification of Fishing Gear (ISSCFG). While the classification looked to be exhaustive, the Working Party felt that it should be examined in detail to evaluate its scope in the WECAFC area."

3 main gear types families are used in the Caribbean with main sub gears.

- Traps (or pots)
- Nets (gill, seine, cast nets, trammel nets)
- Lines (long lines, pole line, hand line, trot lines, deep water buoy lines, manual lines (known as hand line))

The revised ISSCFG classification (Rev 1, 2013) is available here:

<http://www.fao.org/3/a-bt987e.pdf>

The WECAFC geartype classification version 1.0 can be the following from the proposed list above.

To be discussed during the FDS WG

Gear Categories	Standard abbreviations	ISSCFG code
Seine Net	N/A	02
Beach seines	SB	02.1
Gillnet	N/A	07
Cast nets	FCN	06.9
Traps		08
Pots	FPO	08.2
HOOKS AND LINES		09
Handlines and hand-operated pole-and-lines	LHP	09.1
Mechanized lines and pole-and-lines	LHM	09.2
Longlines (nei)	LL	09.39

How to consider multigear ?

4.3.3 Appendix 2.3: Vessel type

We recalled here the conclusion on vesseltype of the first Working Party on Statistics meeting (1978):

“ The Working Party examined the International Standard Statistical Classification of Fishing Vessels (ISSCFV) by GRT categories and by HP categories. It was felt that while these categories would be helpful for classification of larger vessels, they may not be practicable for smaller vessels engaged in artisanal fishery which were very important in this area. It was, therefore recommended by the Working Party that the vessels of 5 tons or less should be classified by length instead of tonnage indicating the hp if the vessels are motorized.”

The challenge is to define the small-scale vessel type given the diversity of type of vessels. The goal here is to be able to give a standard reference to collect data to compute CPUE with comparable unit of effort at regional level.

If we refer to the definition proposed by Haughton, 2005, to define small-scale fisheries in the Caribbean, “*fisheries involving individuals, households, small fishing companies, or fisherfolk organisations using relatively small, unsophisticated fishing vessels, if any, under 20 m LOA, powered by engines not exceeding 300 hp, operating relatively close to shore, and producing fish for local consumption and/or for export.*”, it should provide some indications on a tentative classification.

All vessels above 20m should be considered industrial as per the above definition, in line with ICCAT vessel class definition¹⁷. The international classification defines a size class 12-18 and 18-24m and thus must also be considered.

For industrial fleet as all Caribbean countries report to FAO for their fleet, the ISSCFV can be used. Two classifications exist:

- one defining vessel types (based on the gear type used: <http://www.fao.org/3/a-bt983e.pdf>)
- one defining gross tonnage classes (<http://www.fao.org/3/a-bt982e.pdf>)

To accommodate both regional and international fisheries organizations classifications, the following fleet segments are proposed:

To be discussed during the FDS WG: discuss the length class 18-20 ????

Fleet segment by size

CODE	STANDARD ABBREVIATION	VESSEL TYPE	Length class				
			<6m (19 ft.)	6 m – 18 m 19 – 59 ft.	18 to 20 m 59 – 65 ft.	20 to 24 m 65 – 78 ft.	>24 m (78 ft.)
01.00	TO	Trawlers	TO-1	TO-2	TO-3	TO-4	TO-5
02.00	SP	Purse seiners	SP-1	SP-2	SP-3	SP-4	SP-5
03.00	SOX	Other seiners	SOX-1	SOX-2	SOX-3	SOX-4	SOX-5
04.00	GO	Gill netters	GO-1	GO-2	GO-3	GO-4	GO-5
05.00	WO	Trap setters	WO-1	WO-2	WO-3	WO-4	WO-5
06.00	LL	Long liners	LL-1	LL-2	LL-3	LL-4	LL-5
07.00	LOX	Other liners	LOX-1	LOX-2	LOX-3	LOX-4	LOX-5

¹⁷ http://www.iccat.int/Documents/Comply/vessels_ENG.pdf

CODE	STANDARD ABBREVIATION	VESSEL TYPE	Length class				
			MO-1	MO-2	MO-3	MO-4	MO-5
08.00	MO	Multipurpose vessels	MO-1	MO-2	MO-3	MO-4	MO-5
09.10	DO	Dredgers	DO-1	DO-2	DO-3	DO-4	DO-5
09.00	FX	Other fishing vessels	FX-1	FX-2	FX-3	FX-4	FX-5
09.00.1 ⁽¹⁾	FXANM ⁽¹⁾	Small-Scale vessel non-motorized	FXANM-1	FXANM-2	FXANM-3	FXANM-4	FXANM-5
09.00.2 ⁽¹⁾	FXAMU ⁽¹⁾	Small-Scale vessel motorized undecked	FXAMU-1	FXAMU-2	FXAMU-3	FXAMU-4	FXAMU-5
09.00.3 ⁽¹⁾	FXAMD ⁽¹⁾	Small-Scale vessel motorized decked	FXAMD-1	FXAMD-2	FXAMD-3	FXAMD-4	FXAMD-5

⁽¹⁾ Not in the FAO classification – needed for regional classification. Will be considered as FX if needed

Matrix to be filled out by Member countries

CODE	VESSEL TYPE	[Country Name]
Regional classification	Regional name	Local Name
01.00	Trawlers	
02.00	Purse seiners	
03.00	Other seiners	
04.00	Gill netters	
05.00	Trap setters	
06.00	Long liners	
07.00	Other liners	
08.00	Multipurpose vessels	
09.10	Dredgers	
09.00	Other fishing vessels	
09.00.1	<i>Small-Scale vessel non-motorized</i>	
09.00.2	<i>Small-Scale vessel motorized undecked</i>	
09.00.2	<i>Small-Scale vessel motorized decked</i>	
Other	<i>To be defined</i>	
Other	<i>To be defined</i>	

4.3.4 Appendix 2.4: Spatial units for fishing zones

To be discussed during the FDS WG

The definition of the spatial units for fishing zones is a challenge.

2 options could be considered:

- Option 1 is the definition of FAO sub areas for the Major Fishing Area 31. The appendix 2.4 recalls below the proposals made in 1978 and 1994 for such sub areas.
- Option 2 is a grid on the model of NOAA (1°x1° grid for the southeast Coastal fisheries Trip Report¹⁸ or 2.5'x2.5' for US Caribbean fisheries) or RFMOs such as IOTC (5°x5° or 1°x1° depending on species¹⁹).

These two options could be complementary. The first one could lay the path to a more precise geospatial referencing of catches for species with a fishery management plan.

4.3.4.1 Option 1 for geospatial units: New Statistical Subareas For The Major Fishing Area 31

4.3.4.1.1 New Statistical Subareas For The Major Fishing Area 31 (1978 proposal)

In 1978, a first proposal was presented to the WECAFC Working Party on Statistics.

The excerpt below details the different sub areas and sub divisions proposed. This has to be understood in the light of the 1978 geopolitical context (Please note that some of the British Overseas Territories are now independent states).

From the 1978 report: “

The Working Party reviewed the proposal of sub-areas as presented in the document WECAFC: ST 1/78/6. It was agreed that national jurisdictions should be adopted as the basic subdivisions of the fishing area for the purpose of fishery statistics with the national zones of the larger countries further subdivided as appropriate Adjustments may be needed in the future in the light of circumstances.

Bahamas

Barbados

Brazil: Some subdivision will have to be considered, if necessary.

Colombia: On biological grounds, the Colombian zone could be divided into three sectors, namely:

- (i) the continental coast from the border of Venezuela. westward to the meridian at 74°10'W
- (ii) the coast from this point westward to Panama
- (iii) waters around the islands of Providencia and San Andrés s and the various oceanic cays under Colombian jurisdiction in that vicinity.

Cuba: The Cuban zone could be divided into two sectors:

- (i) the Gulf of Guacanayabo , bounded by the coast to the north and east by the meridian at 80°W to the west, and by the parallel at 20°N to the south
- (ii) the remainder of the Cuban zone.

Dominican Republic

France: There are three distinct French areas in the region:

- (i) French Guyana

¹⁸ https://www.sefsc.noaa.gov/docs/2015_coastal_logbook.pdf - page 6

¹⁹ www.iotc.org/sites/default/files/documents/data/Guidelines%20Data%20Reporting%20IOTC.pdf pages 12-15

- (ii) Guadeloupe and dependencies
- (iii) Martinique

Grenada

Guatemala

Guyana

Haiti

Honduras

Jamaica

Mexico: For practical reason, it is most convenient to adopt the coastlines of the states along Mexico's east coast as statistical subdivisions. From north to south, these are:

- (i) Tamaulipas
- (ii) Veracruz
- (iii) Tabasco
- (iv) Campeche
- (v) Yucatan
- (vi) Quintana Roo

Netherlands: Two distinct groups of islands are associated with the Netherlands:

- (i) St. Martin, Saba, St. Eustatius
- (ii) Aruba, Curaçao, Bonaire

Nicaragua

Panama

Suriname

Trinidad and Tobago

United Kingdom: There are a number of British dependencies in the region, which for statistical purposes could be grouped as follows:

- (i) Anguilla, Sombrero
- (ii) Antigua, Barbuda, Redonda
- (iii) Belize
- (iv) Bermudas
- (v) British Virgin Islands
- (vi) Cayman Islands
- (vii) Dominica
- (viii) Montserrat
- (ix) St. Kitts, Nevis
- (x) St. Lucia
- (xi) St. Vincent
- (xii) Turks and Caicos Islands

United States: The mainland coast and Caribbean dependencies could be divided as follows:

- (i) the mainland coast from the northern boundary of the WECAFC region at 35°N southward to 26°N on the east coast of Florida, this parallel extending seaward as a boundary
- (ii) from this point, around the coast of Florida to 87°W, this meridian extending seaward as a boundary
- (iii) from this point westward to the mouth of the Mississippi River (South Pass) at about 89°W, the next boundary
- (iv) from this point, westward to 94°W, the next boundary
- (v) from this point, west and then south along the coast of Texas to the northern boundary of Mexico
- (vi) Puerto Rico
- (vii) U.S. Virgin Islands

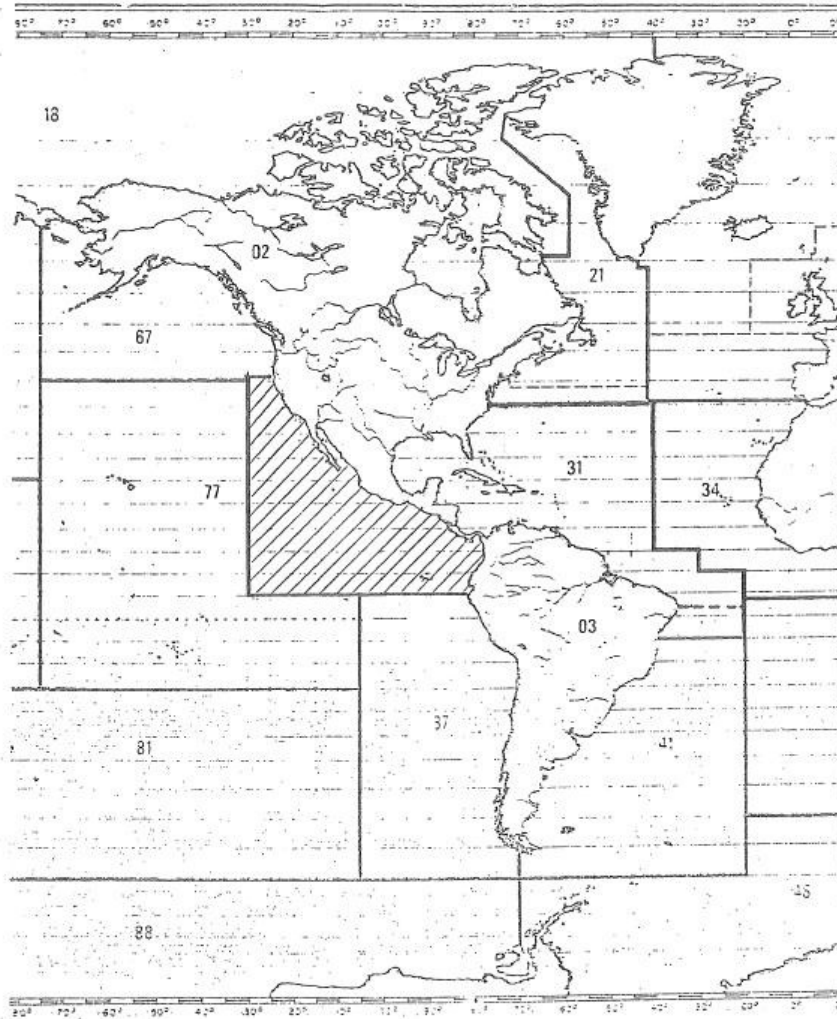
Venezuela: The three subdivisions of the Venezuelan coast recommended previously for shrimp statistics would serve as well for fish. From west to east, these are:

WECAFC – Data Collection Reference Framework

- (i) from the land and sea boundary with Colombia, eastward to the meridian at 68°W
- (ii) from this meridian eastward to the meridian at 62°W
- (iii) from .this meridian eastward to the land and sea boundary with Guyana

The proposed subareas and division codes are:

31.1	USA Atlantic Coast subarea
31.2	Northern Gulf of Mexico subarea
31.2.1	Texas Division
31.2.2	Louisiana Division
31.2.3	Mobile Division
31.2.4	Alapachicola division
31.2.5	Central division
31.2.6	Sanibel division
31.3	Southern Gulf of Mexico subarea
31.3.1	Tampico division
31.3.2	Campeche division
31.3.3	Contoy division
31.4	West Indies subarea
31.4.1	Cuba, southeast shelf division
31.4.2	West Indies division
31.5	Bermuda subarea
31.6	Oceanic subarea
31.7	Yucatan / Nicaragua subarea
31.7.1	Belize division
31.7.2	Honduras division
31.7.3	Nicaragua division
31.8	Costa Rica / Panama subarea
31.8.1	Costa Rica division
31.8.2	Panama division
31.9	Colombia division
31.10	Venezuela division
31.10.1	Gulf of Venezuela division
31.10.2	Lake Maracaibo division
31.10.3	Venezuelan, east coast division
31.10.4	Paria division
31.11	Guyana subarea
31.00.9	Division not known



4.3.4.1.2 WECAFC Working Party on Assessment of Marine Fishery Resources (WPAMSR) proposal for sub areas

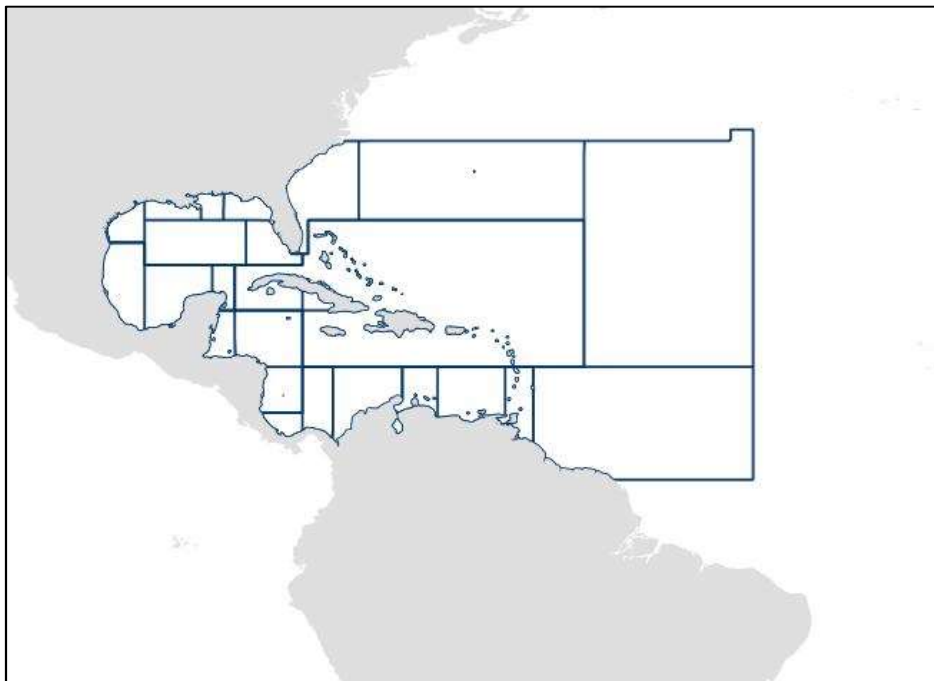
Area 31 sub areas definition (WECAFC, 1990) was refined and proposed by the Working Party on Assessment of Marine Fishery Resources (6th session, 15-19 may 1989).

- 31.1 USA Atlantic Coast
- 31.2 Northern Gulf of Mexico
- 31.3 Southern Gulf of Mexico
- 31.4 West Indies
- 31.5 Bermuda
- 31.6 Oceania
- 31.7 Yucatan / Nicaragua
- 31.8 Costa Rica/Panama
- 31.9 Colombia
- 31.10 Venezuela
- 31.11 Guyana

These are in line with the 1978 proposal.

Here is the interactive representation of the WECAFC proposed sub areas:

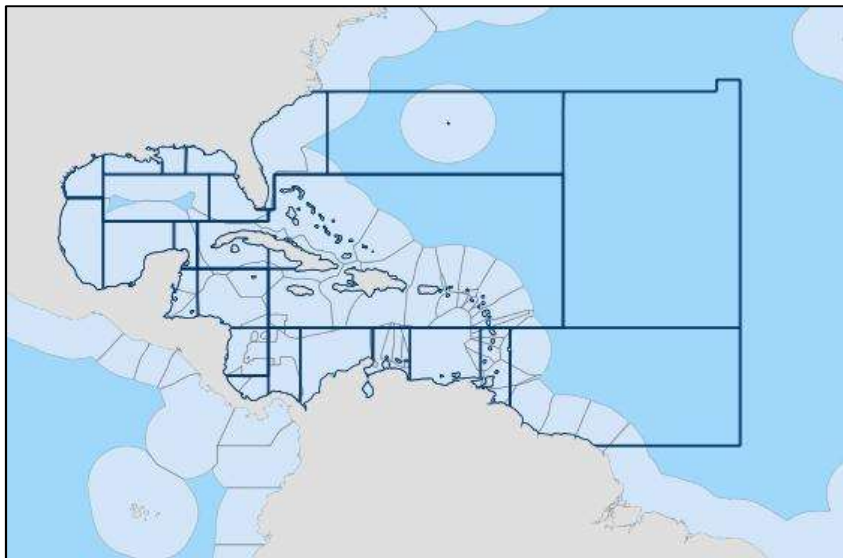
http://www.fao.org/figis/geoserver/fifao/wms?service=WMS&version=1.1.0&request=GetMap&layers=fifao:FAO_AREAS_ERASE,fifao:UN_CONTINENT2&styles=&bbox=-100.0,-10.0,-35.0,40.0&width=1320&height=660&srs=EPSG:4326&format=application/openlayers&cql_filter=F_AR EA=31:INCLUDE



The below figures show a possible implementation with even more detailed sub-areas (reflected EEZ).

This is a non-official representation of these possible sub areas as proposal

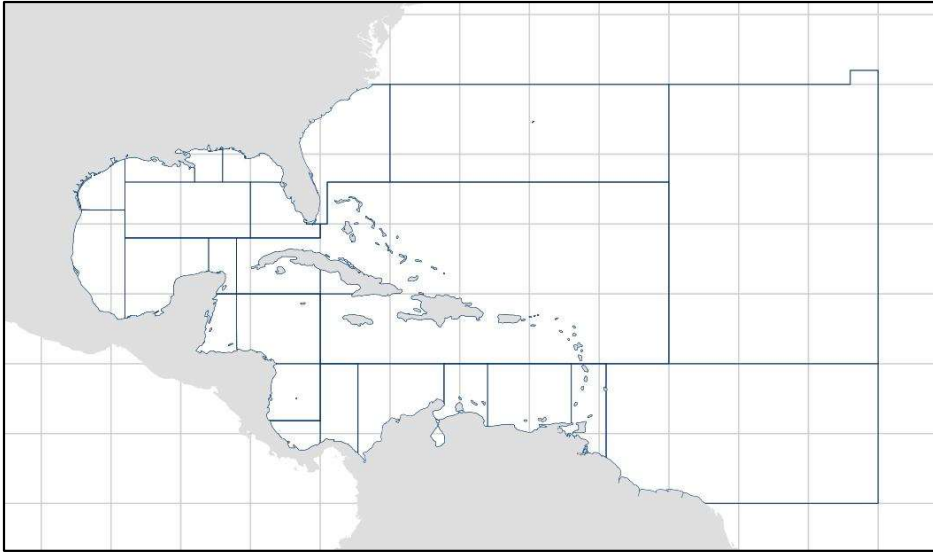
http://www.fao.org/figis/geoserver/fifao/wms?service=WMS&version=1.1.0&request=GetMap&layers=fifao:VLIZ_EEZ_HS,fifao:FAO_AREAS_ERASE,fifao:UN_CONTINENT2&styles=&bbox=-100.0,-10.0,-35.0,40.0&width=1320&height=660&srs=EPSG:4326&format=application/openlayers&cql_filter=INCL UDE;F_AREA=31;INCLUDE



4.3.4.2 Grid proposal: the 5°x5° square grid proposal

The link below proposes a representation of the Area 31 sub areas proposals with the 5°x5° square grid.

http://www.fao.org/figis/geoserver/fifao/wms?service=WMS&version=1.1.0&request=GetMap&layers=fifao:GRID_G5,fifao:FAO_AREAS_ERASE,fifao:UN_CONTINENT2&styles=&bbox=-100.0,-10.0,-35.0,40.0&width=1320&height=660&srs=EPSG:4326&format=application/openlayers&cql_filter=INCL UDE;F_AREA=31;INCLUDE



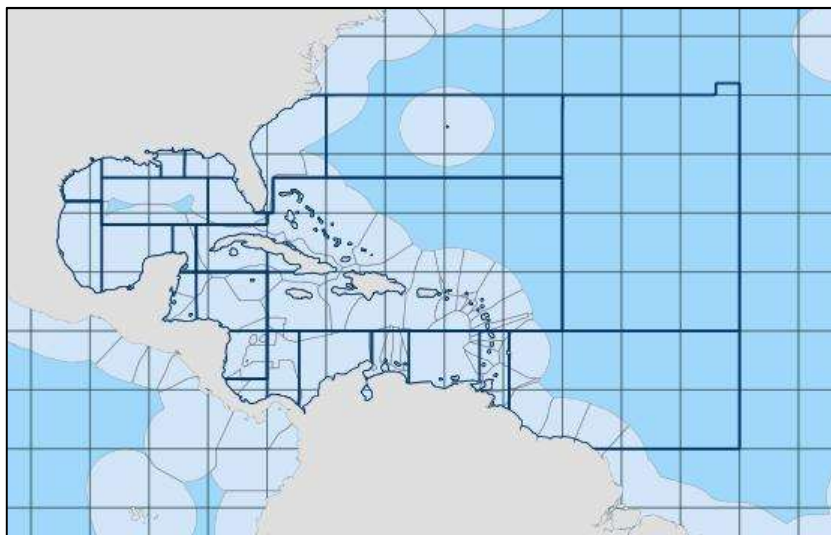
The grid will provide more detailed information especially for the West Indies. Differences between Bahamas, Dominican Republic, Jamaica, and smaller islands (a group of Montserrat / Guadeloupe / Dominica, another with only Barbados and the last one with Martinique / St Lucia / St Vincent and the Grenadines / Grenada and Trinidad and Tobago) will be made using this grid. In some cases, for the West Indies, reporting will be easy as the EEZ is included in the 5x5 square. In other cases like for Bahamas, reporting will be more complex as it will be spread over 3 to 4 different squares.

The grid has to be clearly defined, especially the definition of the coordinates. Do these represent the North East corner, North West corner, the center? (resue CWP recommendations)

4.3.4.3 Discussion on refining subareas

The map below shows the proposal for Major FAO area 31 subareas, the countries' EEZ and the 5x5 square.

http://www.fao.org/figis/geoserver/fifao/wms?service=WMS&version=1.1.0&request=GetMap&layers=fifao:VLIZ_EEZ_HS,fifao:GRID_G5,fifao:FAO_AREAS_ERASE,fifao:UN_CONTINENT2&styles=darkgrey_line.&bbox=-100.0,-10.0,-35.0,40.0&width=1320&height=660&srs=EPSG:4326&format=application/openlayers&cql_filter=INCLUDE;INCLUDE:F_AREA=31;INCLUDE



As mentioned previously, some subareas are quite broad (31.4.2) and would require some review to propose subareas

4.4 Appendix 3: Effort measurement by fleet segment

STANDARD ABBREVIATION	VESSEL TYPE	LOA	Unit of capacity	Unit of Activity	Nominal Effort
TO	Trawlers	All	GT	Fishing days	GT x fishing days
SP	Purse seiners	All	GT	Number of fishing sets	GT x fishing days
SOX	Other seiners	All			
GO	Gill netters	All	Net length ⁽¹⁾	Fishing days	Net Length ⁽¹⁾ x fishing days
WO	Trap setters	All	Number of traps / pots	Fishing days	Number of traps / pots x Fishing days
LL	Long liners	All	Number of hooks	Fishing days	Number of hooks x fishing days
LOX	Other liners				
MO	Multipurpose vessels	All	GT	Fishing days	GT x fishing days
DO	Dredgers	All	GT	Fishing days	GT x fishing days

FXANM	Small-Scale vessel non-motorized	All	Net Length ⁽¹⁾	Fishing days	Net Length ⁽¹⁾ x fishing days
FXAMU ³⁾	Small-Scale vessel motorized undecked		Number of traps/pots	Fishing days	Number of traps/ pots x Fishing days
FXAMD	Small-Scale vessel motorized decked		Number of lines	Fishing days	Number of lines x fishing days

⁽¹⁾ Length of net expressed in 100-metre units (FAO). If this is not available, can be substituted by GT with mention by the Member Country

review outcomes of the T-RFMO March 2018 workshop outcomes

To be discussed during the FDS WG + integrate outcomes of the t-RFMO workshop in Rome, Italy on the recommended unit of activity per vessel type

4.5 Appendix 4: Regional conversion factors

4.6 Appendix 5: Questionnaires

[to be defined later]

4.7 Appendix 6: glossary

(Note: this glossary is under development and currently does not include all terms used in the guidelines – definition in blue are draft definition i.e. not CWP definitions)

Biological data (draft): The term ‘biological data’ refers to the collection of data on biological characteristics of target species, bycatch and incidental catches associated with fishing.

Bycatch (FAO): Part of a catch taken incidentally in addition to the target species towards which fishing effort is directed. Some or all of the bycatch may be returned to the sea as discards, usually dead or dying (i.e. injured).

Catch and landings: These guidelines follow the advice of the CWP on catch and landings²⁰. The CWP advises that the overall aim for statistics on catch and landings is to report on fisheries contribution to the national economy, to the provision of food (subsistence) and on the total removal of fish and other organisms from the sea. Catch statistics are internationally reported as nominal catch (see definition below) which refers to the landings converted to a live weight basis. However, fisheries impact on the ecosystem goes beyond the landed fish and other organisms and includes species

²⁰ <http://www.fao.org/cwp-on-fishery-statistics/handbook/capture-fisheries-statistics/catch-and-landings/en/>

impacted by the gear. Some of these species are brought on deck and later discarded. The various components of the catch are described in the CWP catch concept diagram (Cf. Figure 1). There are fisheries where the number of individuals caught is also required to be reported.

Discarded catch (CWP¹¹): The term ‘discarded catch’ (or discards) refers to the component of the catch which is discarded overboard (refer to the catch concept diagram, Fig. 1). The discarded catch is the total live weight of undersized, unsaleable or otherwise undesirable whole fish discarded at the time of the capture or shortly afterwards. Discarded fish and other organisms may be discarded dead or alive, and may include species taken as bycatch.

Fish Product (draft): the term ‘fish product’ refers to any part of a fish which is handled and processed for food, agricultural, industrial or other uses. Products include whole fish, fillets, trunks, heads, roe and oils. Processing may involve heading, heading and gutting, filleting and mincing.

Fish product conversion factor (draft): the term ‘conversion factor’ (CF) refers to the ratio of the live weight of a fish to its product weight, i.e. $CF = \text{live weight} / \text{product weight}$. A conversion factor applies to a specific product type.

Fish Product Type (draft): the term ‘fish product type’ refers to the type of product which results from processing the fish. Product types include whole fish, fillets, headed and tailed trunks, headed and gutted trunks, heads, roe, meal and oil.

Fishery fleet (CWP²¹): The term "fishery fleet" or "fishery vessels" refers to mobile floating objects of any kind and size, operating in freshwater, brackish water and marine waters which are used for catching, harvesting, searching, transporting, landing, preserving and/or processing fish, shellfish and other aquatic organisms, residues and plants.

Fishery sector (draft): The term ‘fishery sector’ refers to a subset of a fishery which shares similar technical, regional or socio-economic characteristics, such as a fishing fleet comprised of artisanal, commercial or subsistence fishers, or a fleet operating in domestic/EEZ waters or in the high seas.

Fishing gear (draft, based on FAO²²): The term ‘fishing gear’ refers to specialized equipment used for catching fish and defined according to the international standard classification revised version (ISSCFG Rev1, 2010²³). Each gear can have multiple configurations.

Fishing trip (draft, based on NOAA): The term ‘fishing trip’ refers to a period of time that begins when a fishing vessel departs from a dock, berth, beach, seawall, ramp, or port to carry out fishing activities and that terminates when the vessel returns to a dock, berth, beach, seawall, ramp, or port.

Fishing vessel (CWP⁸): The term "fishing vessel" refers to a vessel which is engaged only in catching operations.

Fleet Capacity (draft): the term ‘fleet capacity’ refers to a nominal measure of the capacity of a fishery fleet to conduct fishing activities. For statistical purposes, fleet capacity may be summarized by fishing vessel tonnage or vessel type based on two international classifications adopted by the CWP:

1. The "International Standard Statistical Classification of Fishery Vessels by GRT Categories" (ISSCFV), based on the Gross Register Tonnage of the vessels, approved by the CWP in 1977. See ISSCFV GRT classification ²⁴
2. The 'International Standard Statistical Classification of Fishery Vessels by Vessel Types' (ISSCFV), based on the type of gear used by the vessels, approved by the CWP in 1984²⁵.

Fish Aggregating Device (FAD) (draft, based on FAO): The term ‘FAD’ refers to a permanent, semi-permanent or temporary structure or device made from any material and used to lure fish.

Incidental catch (draft): The term ‘incidental catch’ refers to a subset of the bycatch which interacts incidentally with the fishing gear and becomes hooked, netted or entangled, such as incidental catch of marine mammals, seabirds and turtles.

²¹ <http://www.fao.org/cwp-on-fishery-statistics/handbook/capture-fisheries-statistics/fishery-fleet/en/>

²² <http://www.fao.org/cwp-on-fishery-statistics/handbook/capture-fisheries-statistics/fishing-gear-classification/en/>

²³ <http://www.fao.org/3/a-bt987e.pdf>

²⁴ <http://www.fao.org/3/a-bt982e.pdf>

²⁵ <http://www.fao.org/3/a-bt983e.pdf>

Landing (CWP¹¹): The net weight of the quantities landed as recorded at the time of landing, including:

- Whole or eviscerated fish, fillet, livers, roes, etc.
- Fresh, iced, chilled or frozen, cured or canned products etc
- Fishmeals, liver oils, body oils etc
- Other edibles or inedibles fishery products, etc.

Landed weight (CWP¹¹): The term ‘landed weight’ refers to the mass (often referred to as weight) of a product at the time of landing, regardless of the state in which it is landed. That is, the fish may be whole, or gutted or filleted. Consequently this measure is of limited use for further analysis except where it is known that the product is homogenous in nature. Where more detailed analysis of the data is required, the landed weight is generally converted to a more meaningful measure, the most frequently used being the "nominal catch" (see below).

Live weight: The term ‘live weight’ refers to the weight of fish or other organisms when brought on board alive and prior to processing.

Length class: to be defined

Maturity: to be defined

Nationality of catch and landings (CWP¹¹): For the purpose of reporting national fishery statistics, the catch and landings is generally assigned to the country of the flag flown by the fishing vessel. However, the CWP recommended that this may be over-ridden only when one of the following arrangements between a foreign flag vessel and the host country exists: the vessel is chartered by the host country to augment its fishing fleet; or the vessel fishes for the country by joint venture contracts or similar agreements (as opposed to the ad-hoc practice of a vessel selling catches to a foreign vessel or landing catches at a foreign port) and the operation of such vessel is an integral part of the economy of the host country. In either case, the assignment of nationality to catch and landings data should be specified in the charter or joint-venture agreements.

Nominal catch (CWP¹¹): The term ‘nominal catch’ refers to the landings converted to a live weight basis. Nominal catch is often referred to as the "Live weight equivalent of the landings" or shortened to the "Live weight", and in some national publications it is also referred to as "Landings on a round, fresh basis", "Landings on a round, whole basis" or "Landings on an ex-water basis". Care should be taken when referring to the nominal catch as the ‘catch’ since in many situations the catch includes components which are not landed (refer to the catch concept diagram, Fig. 1).

Non-fishing vessel (CWP⁸): The term "non-fishing vessel" applies to vessels performing other functions related to fisheries, such as supplying, protecting, rendering assistance or conducting research or training.

Primary Gear (draft): the term ‘primary gear’ refers to the fishing gear which is used in greater than or equal to 50% of the fishing activities during a fishing trip.

Retained catch (CWP¹¹): The term ‘retained catch’ refers to the component of the catch which is retained on board the fishing vessel (refer to the catch concept diagram, Fig. 1). The retained catch is reported as total live weight of fish and other organisms retained and in some fisheries the number of individuals retained is also required to be reported.

Sample design: to be defined

Socio-economic data (draft): the term ‘socio-economic data’ refers to the collection of data on social and economic characteristics of fishers, communities and businesses associated with fishing.

Source of data: to be defined

Vessel Beam (draft): is the width of the hull

Vessel Construction location (draft): Location of the vessel shipyard

Vessel Draft (or draught) (draft): Is the vertical distance from the bottom of the keel to the waterline.

Vessel Hull type (draft): type of the watertight body of the vessel (steel, aluminum, fiber glass, wood, etc..)

Vessel IMO number (draft): International Maritime Organization Number

Vessel IRCS (draft): International Radio Call Sign

Vessel Main Engine Power (draft): Power of the vessel main engine (in-board or outboard)

Vessel GRT (draft): Gross Registered Tonnage

Vessel GT (draft): Gross Tonnage

Vessel LOA (draft): Length OverAll is the extreme length from one end to the other

Vessel Type (draft): Type of fishing vessel according the agreed classification (national, regional, international)

Vessel Year of Construction (draft): Year of the original vessel construction