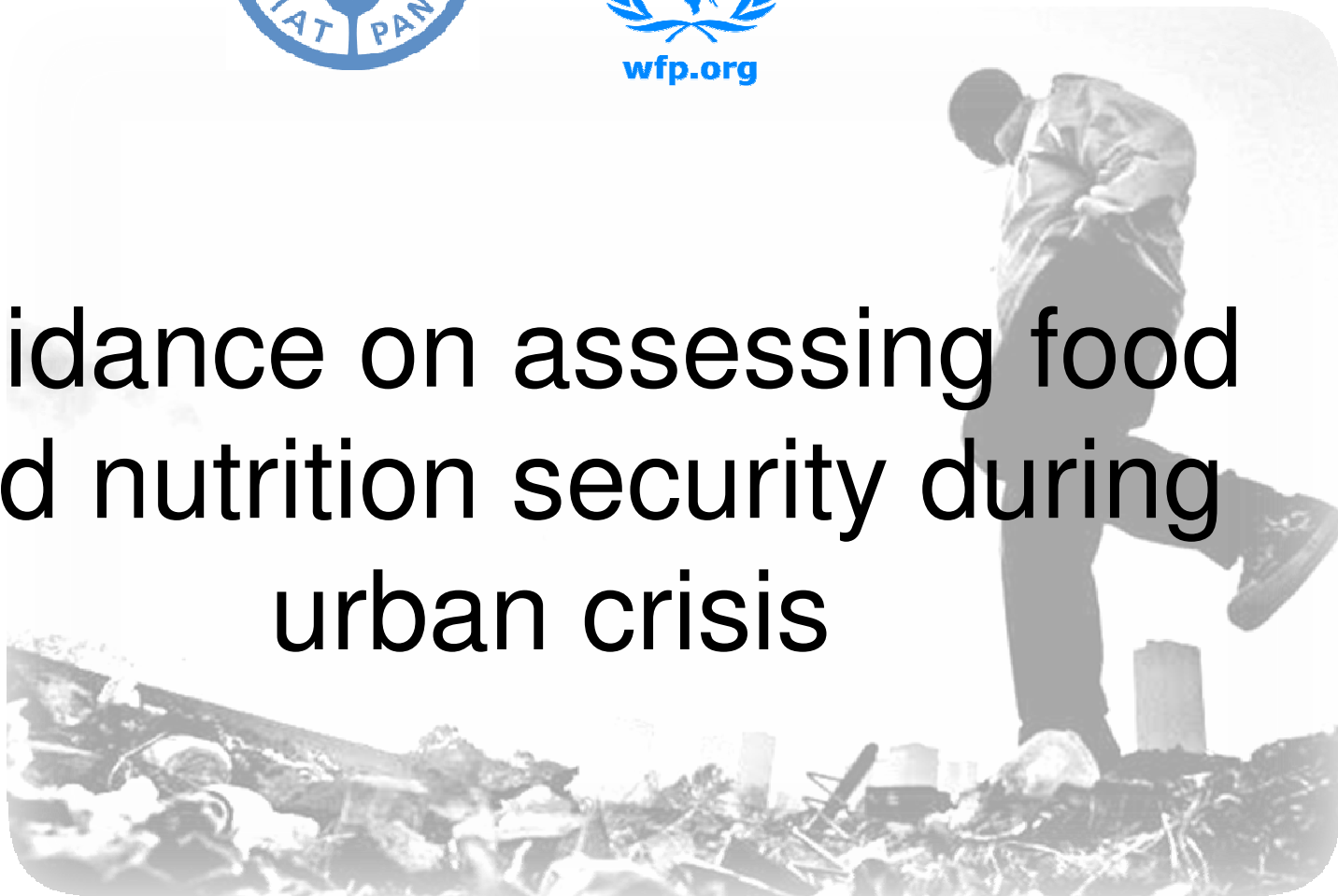




Guidance on assessing food and nutrition security during urban crisis





URBAN POPULATIONS and RISK



- In 2008, 3.3 billion people lived in urban areas
- By 2030, urban population will exceed five billion, of which 80% will be in the developing world.

(UN-HABITAT 2008, World Disasters Report 2010)

- Today in cities:
 - >1 billion people live in appalling conditions & whose basic needs are not always met.
 - Risks: cyclones, floods, earthquakes, infectious diseases, crime, fires, price volatility, etc.



CONTEXT



- Background:
 - IASC reference group MHCUA
 - MHCUA strategy:
 - Strategic Objective 5
“Restore Livelihoods and Economic Opportunities as a priority in Emergency phase for Expedited Early Recovery in Urban Areas”
 - Strategic Objective 3
“Develop or Adapt Humanitarian Approaches and Tools for Urban Areas”
- Challenges/gaps in **methodologies & tools** to analyse & respond to **food and nutrition security** issues in **urban emergencies**



RATIONALE



- Build on existing experiences
- Work in 'partnership' & 'collaboration'
- Partners: Action Contre la Faim, Concern, IFRC, Oxfam.

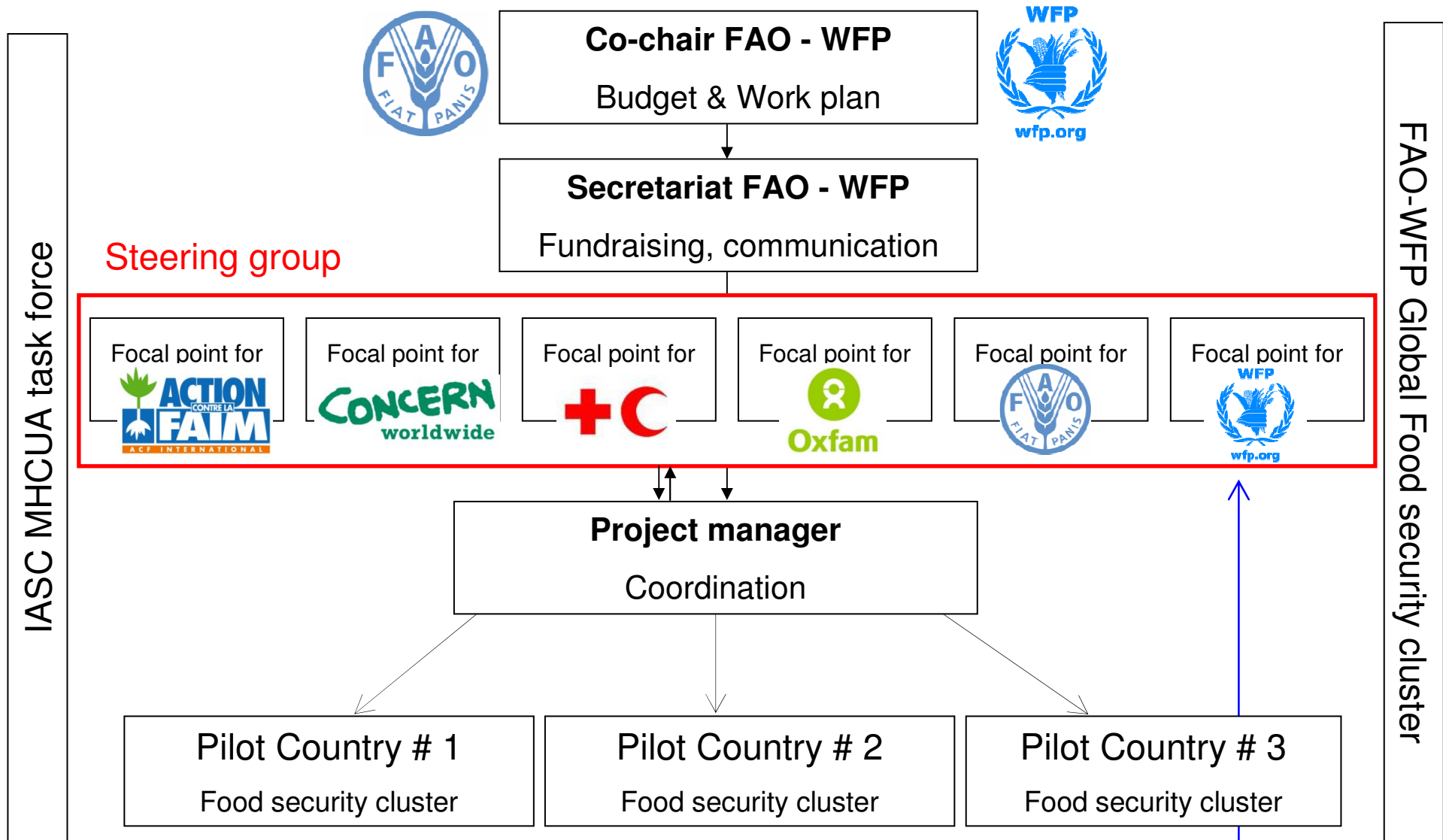




OBJECTIVES



- Overall:
 - to build the local, regional and global CAPACITIES to assess FNS needs and inform responses to *CRISIS in URBAN* and PERI-URBAN areas
- Specific:
 - Develop *TOOLS AND GUIDANCE* (vulnerability and needs analysis, targeting, monitoring and contingency planning)
 - Set up a well functioning *COLLABORATIVE MECHANISM*



STRUCTURE



OUTPUTS



- A comprehensive set of indicators, tools and methodologies
 - vulnerability and needs analysis,
 - targeting,
 - monitoring and early warning
- An adapted/improved contingency plan
 - to strengthen the city preparedness to FNS response to crisis
- A guidance on the collaboration mechanisms between partners, urban administrations and communities



TIMELINE



- September 2011, developed and endorsed by partners :
 - Logical Framework
 - Work plan
- Next steps:
 - Draft technical guidance June 2012
 - Pilot in three cities by September 2012
 - Expand to a fourth city by March 2013
 - Validation of the guidance materials Nov 2013
 - Publication and dissemination Dec. 2013

CONTACTS

Thank you!



Sylvie.Wabbes@fao.org

Maylis.Razes@fao.org

kathryn.ogden@wfp.org

astrid.sacristan@wfp.org