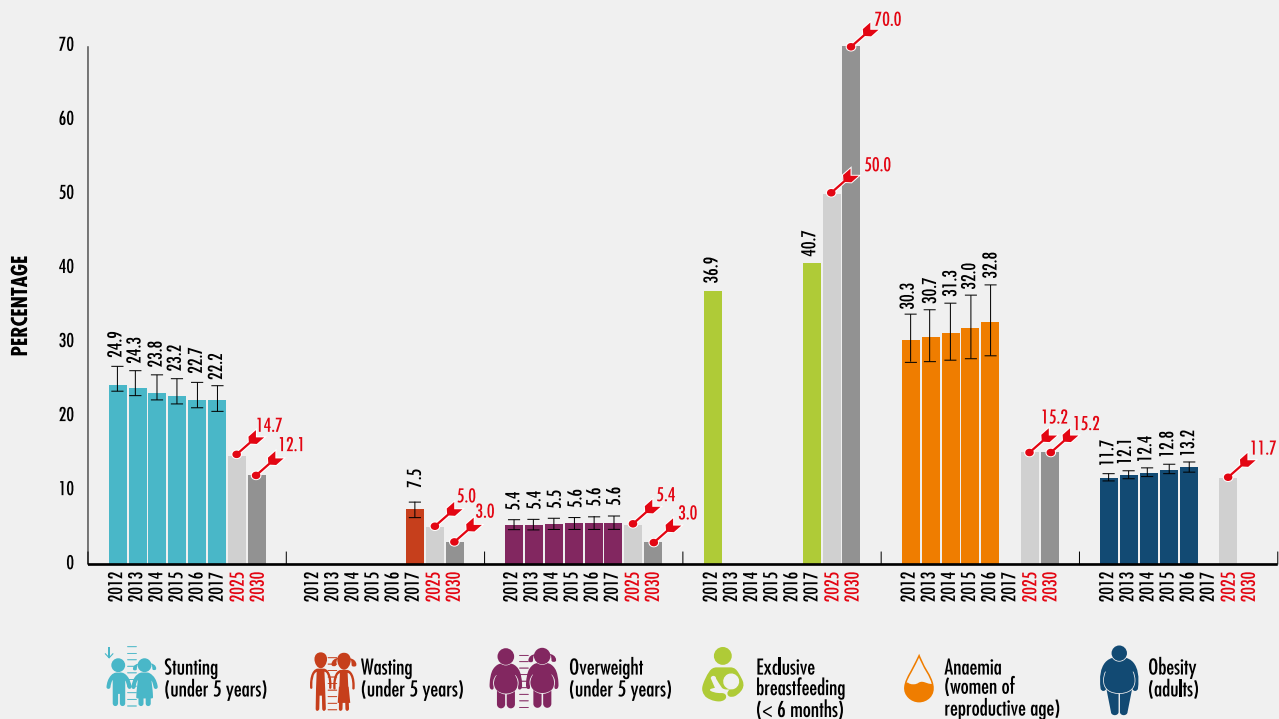


# FIGURE 6 THERE IS STILL A LONG ROAD AHEAD TO ACHIEVE THE 2025 AND 2030 TARGETS FOR STUNTING, WASTING, OVERWEIGHT, EXCLUSIVE BREASTFEEDING, ANAEMIA IN WOMEN OF REPRODUCTIVE AGE AND ADULT OBESITY



SOURCES: Data for stunting, wasting and overweight are based on UNICEF, WHO and International Bank for Reconstruction and Development/World Bank. 2018. *UNICEF, WHO, World Bank Group Regional and Global Joint Malnutrition Estimates, May 2018 Edition* [online]. <https://data.unicef.org/topic/nutrition>, [www.who.int/nutgrowthdb/estimates](http://www.who.int/nutgrowthdb/estimates), <https://data.worldbank.org>; data for exclusive breastfeeding are based on UNICEF. 2018. *Infant and Young Child Feeding: Exclusive breastfeeding, Predominant breastfeeding*. In: *UNICEF Data: Monitoring the Situation of Children and Women* [online]. <https://data.unicef.org/topic/nutrition/infant-and-young-child-feeding>; data for anaemia are based on WHO. 2017. *Global Health Observatory (GHO)* [online]. <http://apps.who.int/gho/data/node.imr.PREVAEMIA?lang=en>; data for adult obesity are based on WHO. 2017. *Global Health Observatory (GHO)* [online]. <http://apps.who.int/gho/data/node.main.A900A?lang=en>