

High Level Stakeholders Meeting on Global Strategy
From Plan to Action

WFP Headquarters, 03-05 December 2012

expert session on **Master Sampling Frames for Agricultural and Rural Statistics**

Italian Experience

Marco Ballin, Massimo Greco, Caterina Viviano

Istat



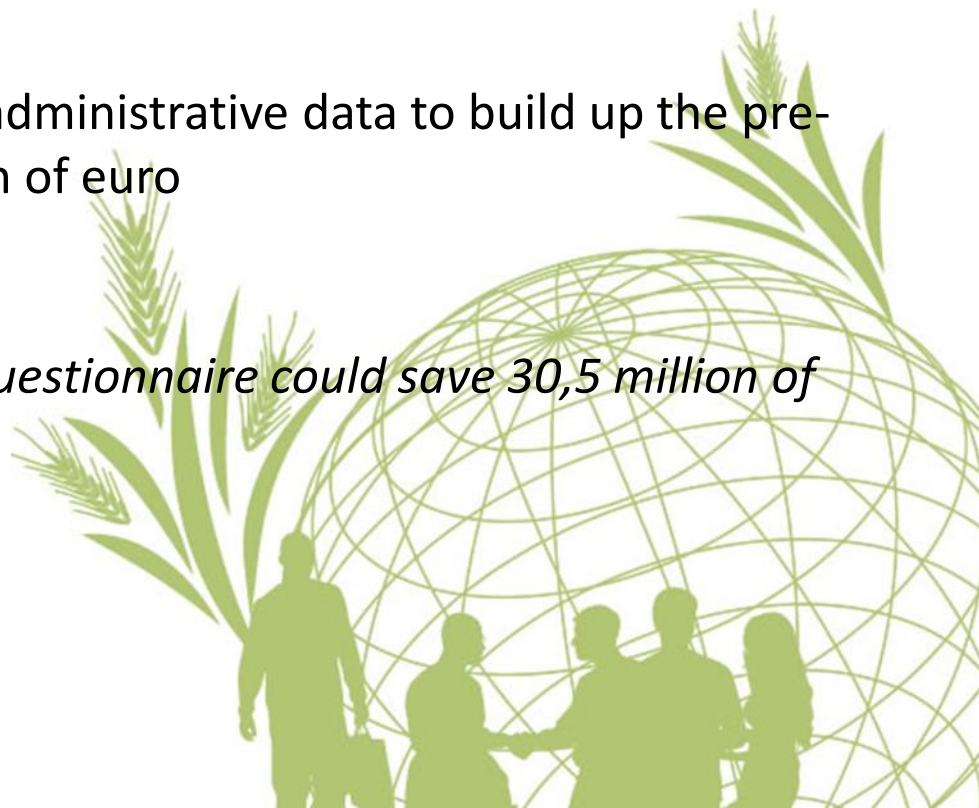
Use of administrative data in the Agricultural Census

- **To build up the pre-census list**
- *To avoid characteristics in the questionnaire*
- **In the Editing & Imputation and validation phase**

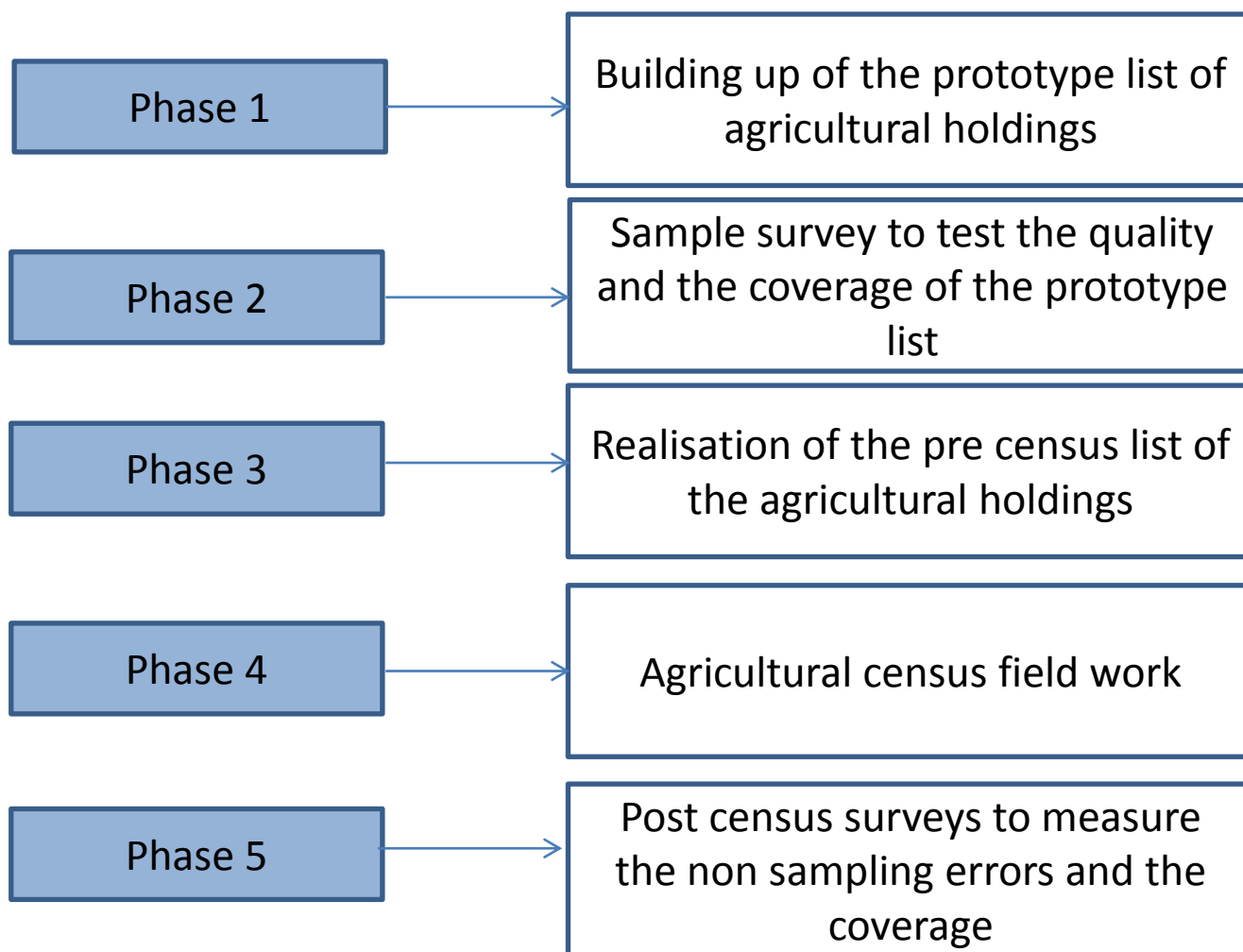


The use of administrative data save money and reduce the statistical burden

- In the Italian Census the use of administrative data to build up the pre-census list has saved 16,8 million of euro
- *To avoid characteristics in the questionnaire could save 30,5 million of euro*



The use of administrative data in the Italian Agricultural Census

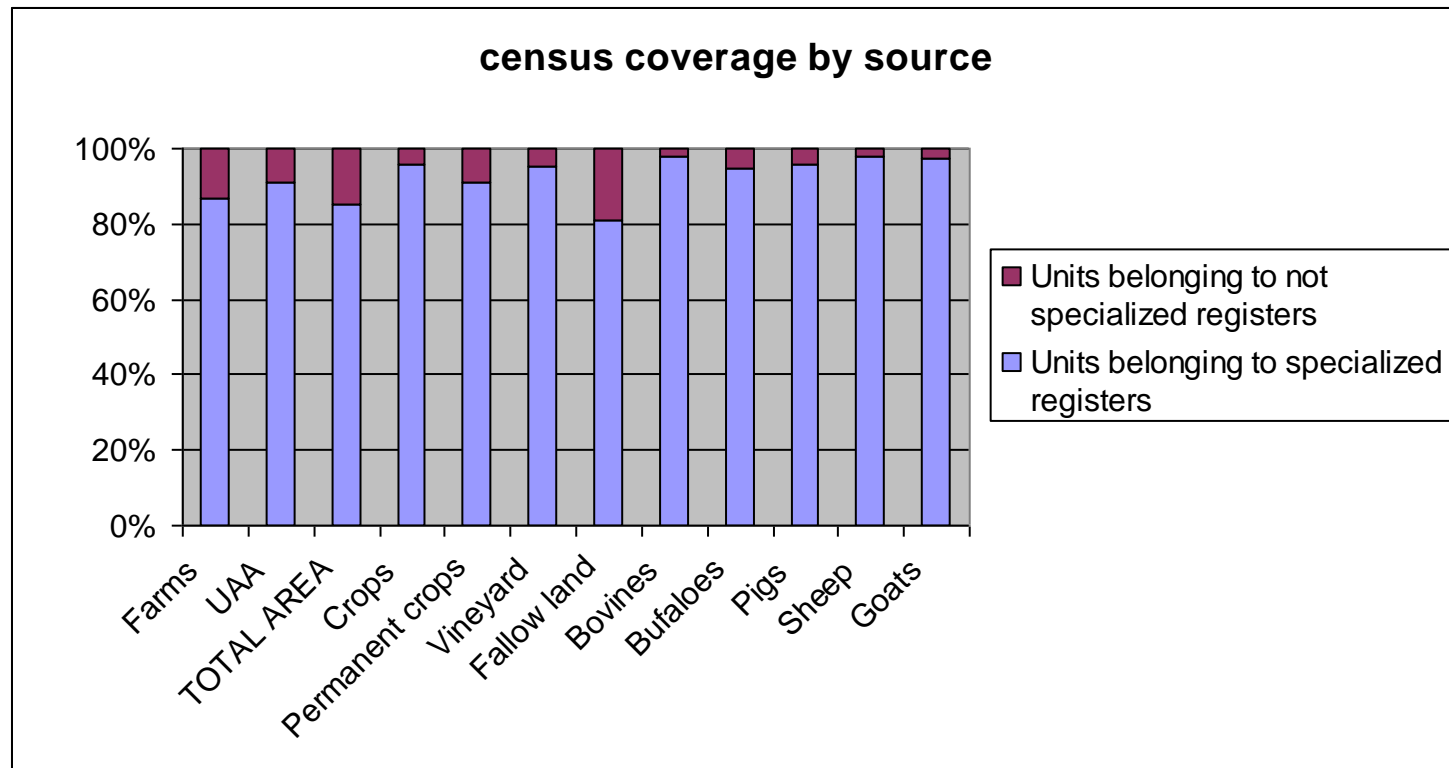


Administrative and statistical sources utilized

To build up the pre census list	For E & I phase
Integrated Administration and Control System	YES
System for the Identification and Registration of Bovine Animals and other species	YES
lands' property Incomes	
Land cadaster	
VAT declarations (Tax Agency), the Chambers of Commerce	
2000 Census of Agriculture	YES
Business Register	
<i>Public Institution list</i>	
<i>Non profit Institutions list</i>	
<i>Agritourism</i>	YES
<i>Units with DOP/IGP products</i>	YES
<i>Wine declarations</i>	YES
<i>FSS 2007</i>	
<i>Common land list</i>	
<i>Units with crop products in the tax declaration</i>	
<i>Regional lists</i>	



Administrative and statistical sources utilized



To evaluate the coverage of the Census, Istat has carried out a post Census survey

Objective

To estimate the number of holdings existing at the reference date of the Census and to calculate the coverage (ratio between holdings enumerated at the Census and the holdings existing)

Characteristics

- Sample survey on areal base
- Independent from the Census

Petersen probabilistic model (Wolter 1986)

		LIST B		
		<i>IN</i>	<i>OUT</i>	
LIST A	<i>IN</i>	X11	X12	X1+
	<i>OUT</i>	X21	X22	X2+
		X+1	X+2	X++=N



Problems in using administrative data for statistical purposes

- Different definition of the agricultural holdings
- Different classification and definition of the variables
- Adm. database could be incomplete (some sectors are not covered) and/or not regularly update
- Adm. database are not treated with statistical procedure for coding and E&I (*quality*)
- Adm. database could be not easily available to the statistics
- Difficulties to find a common key for linking the databases
- Localization of the unit

