

# AN OVERVIEW OF MIRO FORESTRY (GH) LTD

Presented by:  
Ernestina Osei-Peprah

# Outline of Presentation

- Background
- History of the Boumfuom FR
- Stakeholder Engagement Processes
- Grievance Mechanism Procedure
- CSR projects
- EPA requirements
- FSC compliance

# Project Summary

- Miro Forestry is the leading plantation forestry company in West Africa
  - Developing modern tree nurseries and timber plantations
- employs over 400 people from the Agogo area delivering training and skills development and over GHc1,500,000 income to the community
- establishes sustainable forest plantations for the production of transmission poles, sawn timber and plywood
- Miro is financed by anchor investors CDC (the Government of the United Kingdom) and Finnfund (the Government of Finland) working in partnership with the Government of Ghana
- Protecting environmentally sensitive areas and developing community projects



# Background to Miro Forestry

- Miro Forestry is the leading commercial plantation forestry businesses in West Africa. The Company is growing fast-rotation tree crops for the production of transmission poles and plywood for the local and regional market, as well as wood chips for pulp and biomass
- Operates over 30,000 hectares of plantations in Ghana and Sierra Leone establishing over 3,000 new hectares per annum.
- The Company is owned by CDC Group plc (the Commonwealth Development Corporation, majority owned by the British Government) and the Finnish Fund for Economic Cooperation Ltd (majority owned by the Government of Finland), as well as over 25 other West African, European and Middle-Eastern shareholders.

# Business Overview

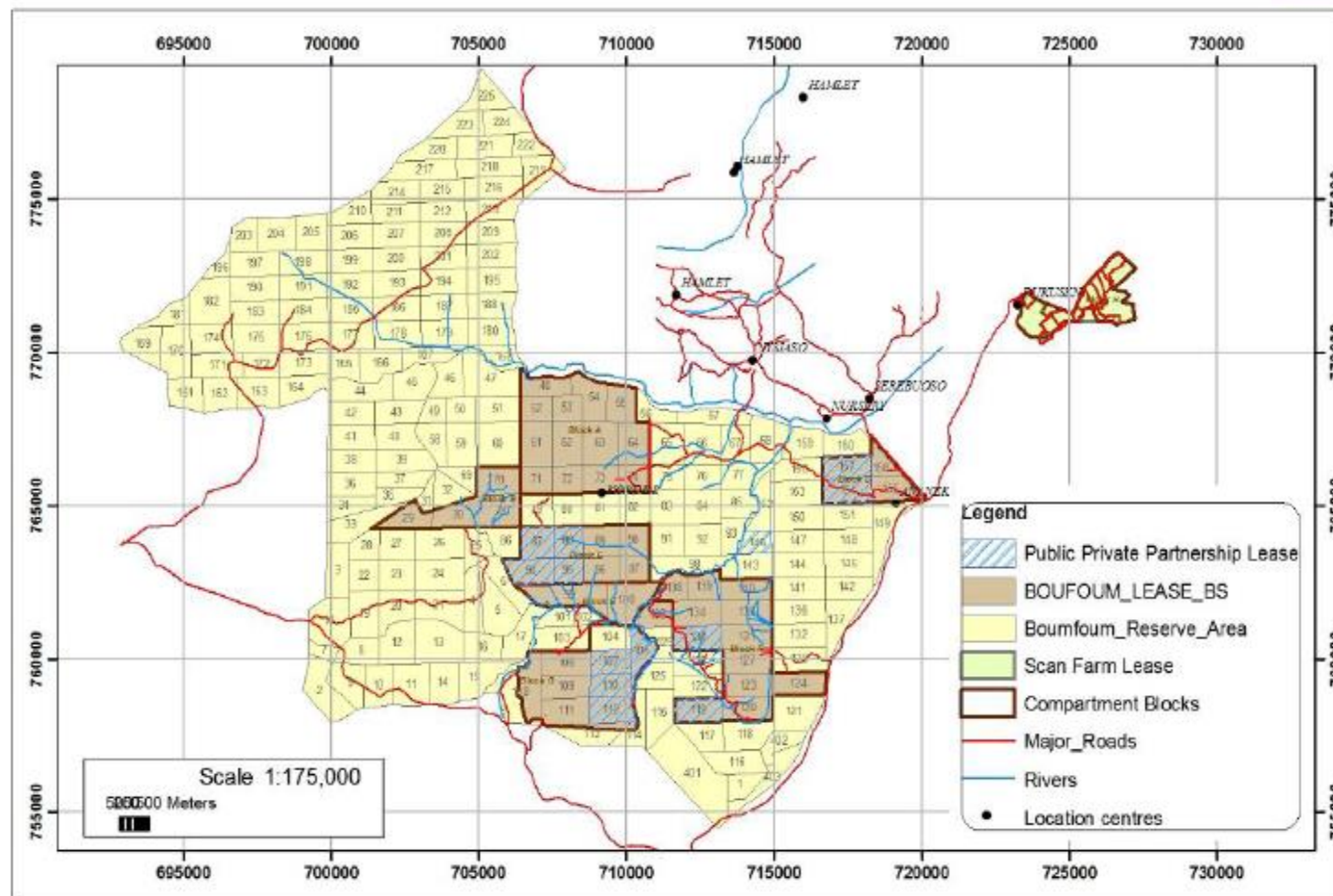


# History of the Boumfuom Forest Reserve

- 26,000 ha BFR owned by the people of Agogo, Kumawu & Kwamang
- Under the reservation agreement, the people have hunting rights in the Reserve and are allowed to collect firewood and NTFPs
- Reserve got degraded after the long drought in 1983; fires
- Current land-use: agricultural farming (onions, cassava, maize and plantain), other parts have been previously used for the establishment of Teak plantations.
- 5,000 ha allocated to Miro
- Benefit sharing arrangements, which include landowners, are defined in lease agreements between Miro and the Forestry Commission



## MIRO FORESTRY GHANA LIMITED: BOUFOUM & PPP LEASES



Produced and published by Planning Forester at Agogo Ashanti Region, Ghana 02/06/2015.

# Stakeholder Engagement

We are committed to engaging with stakeholders in communities to ensure that we are listening to, learning from and taking into account their views as we conduct our business — a SEP in place.

- Stakeholder identification & mapping (interests, roles, etc.)
- Stakeholder contact register
- Regular meetings/engagements
- Recording/reporting



# Grievance Mechanism

The Company's grievance mechanism provides employees and stakeholders with a mechanism to express grievances without fear of reprisal and ensure concerns are appropriately addressed in a timely manner.

- Receive/ Accept Grievance
- Acknowledge/Assess/Record
- Investigate
- Determine Resolution
- Complaint Satisfied? (closed/pending)
- Documentation management



# CSR Projects

- Supported Hwidiem Vocational school
- 2 boreholes in Agogo to improve water supply
- 2-unit classroom block for kindergarten children at Ananekrom



# EPA Requirements

- Environmental permit obtained; 1<sup>st</sup> annual environmental report ready for submission.
- Final Environmental Management Plan to be submitted in Feb. 2016
- Environmental monitoring/reporting biannually
- Stakeholder engagements (FC, FSD, WD, EPA, WRC, Asante-Akyem North Dist. Assembly, Agogo Presbyterian Hospital, Agogo & Kumawu Trad. Councils, Local farmers & communities)

# FSC compliance

- Grievance Mechanism Procedure and Stakeholder Engagement Plan established (aligned with FSC Principles & Criteria)
- CAR system established and in place
- Road Safety Management Plan to be rolled out in October/November
- Environmental monitoring (buffers, species diversity, water quality, etc.)
- Internal FSC audit in November
- Target: FSC certified in 2017.



# THANK YOU