



Food and Agriculture  
Organization of the  
United Nations



International Fund for  
Agricultural Development



World Food  
Programme

**Practical Guidance on the Operationalisation of  
Responsible Investment Principles in Large-Scale  
Agricultural Investments**

***Side event organized by the Inter-Agency Working  
Group  
(FAO, IFAD, UNCTAD and the World Bank)***

# **Challenges and Opportunities of Applying the Principles for Responsible Investment in Agriculture and Food Systems in Cameroon**

Médi MOUNGUI, Deputy Permanent Representative,  
Second Counsellor, Embassy of Cameroon

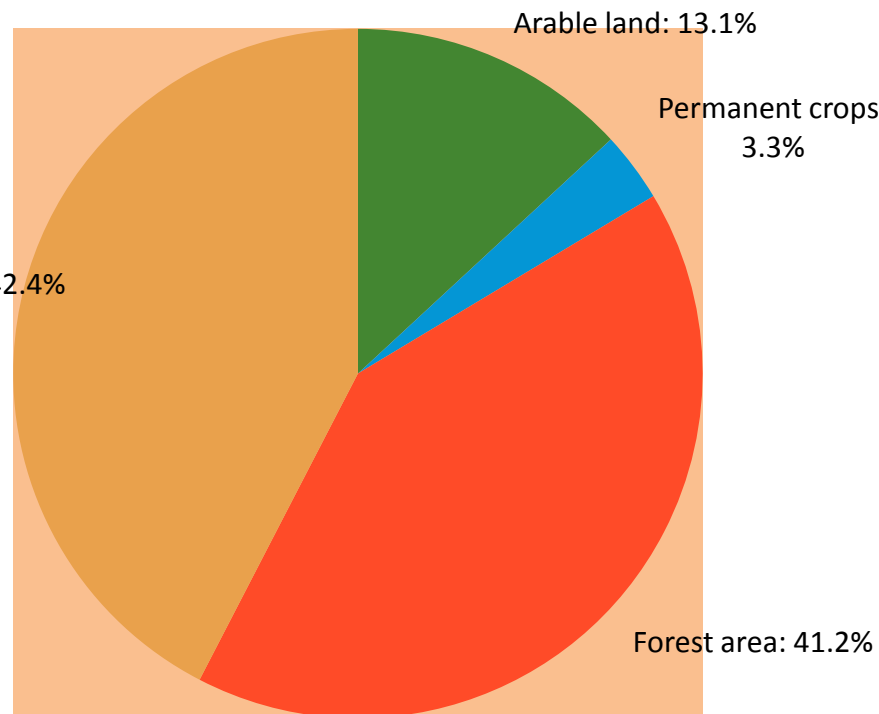
# DISCUSSION POINTS

- LAND USE IN CAMEROON IN 2012
- THE HERAKLES CASE
- THE HERAKLES CASE – CHALLENGES AND OPPORTUNITIES
- THE HERAKLES CASE - ALTERNATIVES
- THE HEVECAM SA/GMG CASE
- THE HEVECAM CASE – CHALLENGES AND OPPORTUNITIES
- THE HEVECAM CASE – SUGGESTED ACTIONS

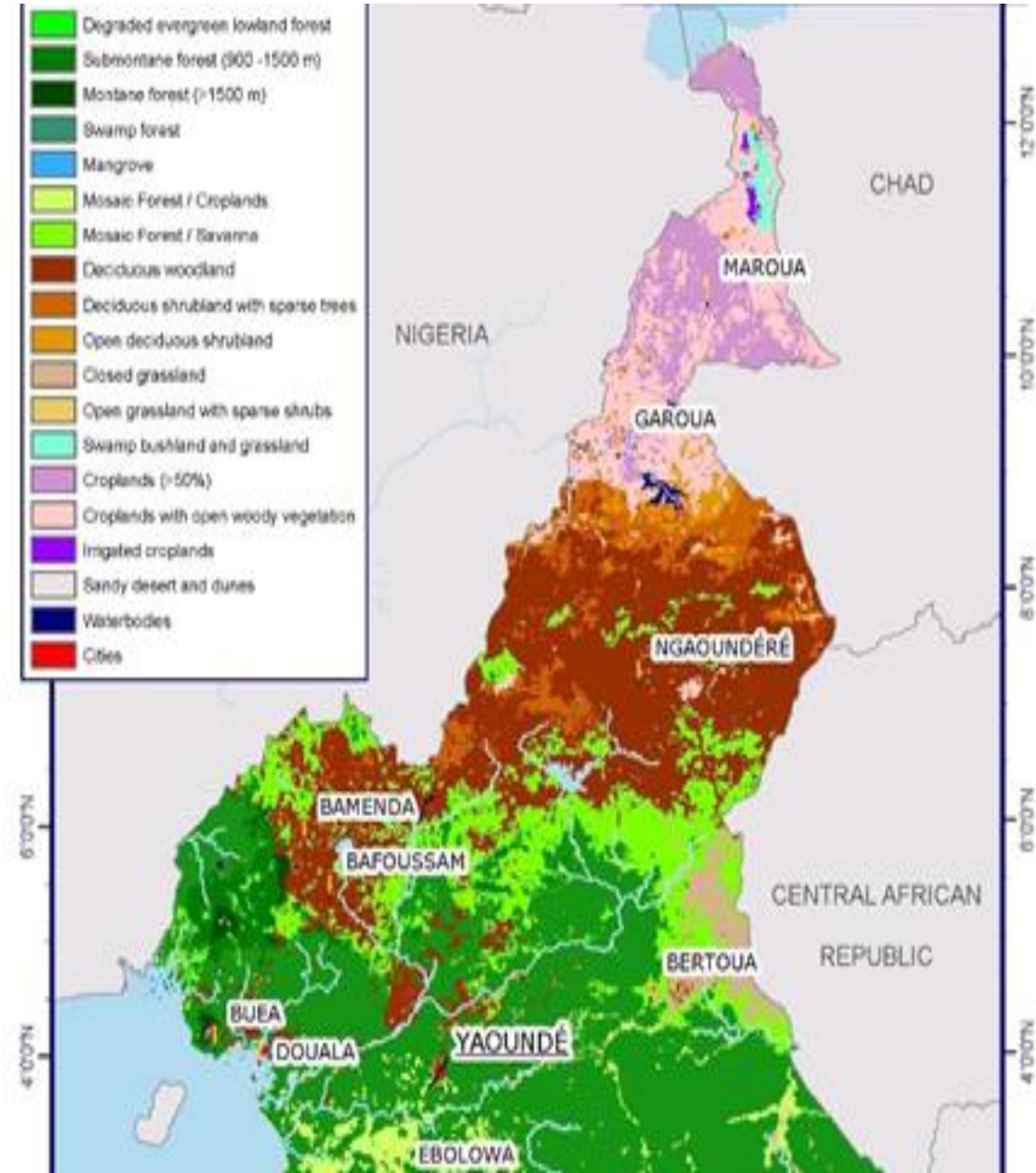
# Land use in Cameroon in 2012

Source: [FAO Stat Resource Statistics - Land, May 2015](#)

## Arable land



- Arable land
- Permanent crops
- Forest area
- Other Land



# THE HERAKLES (SGSOC) CASE

- Origin: American (SG Sustainable Oils Cameroon)
- Activity: Oil palm plantations;
- Area: South West Region located between the Korup National Park and the Rumpi Hills Forest Reserve;
- Consession: 19,843 ha for land lease for a 3-year probation period granted by Presidential Decree of November 2013;



## THE HERAKLES (SGSOC CASE) – CHALLENGES - OPPORTUNITIES (CONT'D)

- Environmental: Watershed area, forest reserves, ESIA (Environment and Social Impact Assessment);
- Financial: USD 360 million investment, Payment of Council dues as rent to the tune of 350,000 USD;
- Employment creation: Population in the area expected more than a thousand employment created;
- Project started with timber logging yielding more than USD 60 million to Herakles;



## THE HERAKLES (SGSOC CASE) – ALTERNATIVES (CONT'D)

- Ensure that palm trees are combined with other crops and trees for agricultural diversification
- Protect natural forests and avoid converting forested lands into plantations;
- Support small-scale production of palm oil by smallholders with improved access to markets for production outputs;
- take into consideration the sustainable management of the forest





## HEVECAM – GMG –CASE

Origin: Singapore (GMG)/China

Activity: Rubber plantations

Area: South Region Since October 2010

- 80% stake (GMG) 20% State
- Concession: 45,000 hectares land lease for 50 years renewable.



# HEVECAM – GMG –CASE

## CHALLENGES - OPPORTUNITIES

- Sociological: influx of migrants associated with increased pressure on resources, conflicts, the pygmies, whose habitat is the forest are threatened...;
- Environmental: negative impact on forest products and non-timber forest product, on wildlife and fish resources, Site close to world heritage site: the Dja Wildlife Reserve;
- Governance: Land rights (customary and legislative), conversion of forests into rubber plantation by logging companies;
- Economic: support to smallholder plantations.
- Employment creation: About eight thousand new jobs created;



## HEVECAM – GMG –CASE SUGGESTED ACTIONS

- Monitoring Committee for new investments linked to the Agricultural National Investment Programme (PNIA);
- Existing legal frameworks enforced ;
- Communication strategy;
- Increase transparency by making this information available to the public;
- Develop an Environmental and Social Management Plan



THANK  
YOU!!  
MERCIIII

