



Food and Agriculture  
Organization of the  
United Nations



CIHEAM

# Scientific Consultation and High-Level Meeting on Red Palm Weevil (RPW) Management

## TOWARDS USER-FRIENDLY EARLY DETECTION ACOUSTIC DEVICES FOR RPW MANAGEMENT

Richard Mankin  
USDA ARS CMAVE  
Gainesville, FL USA



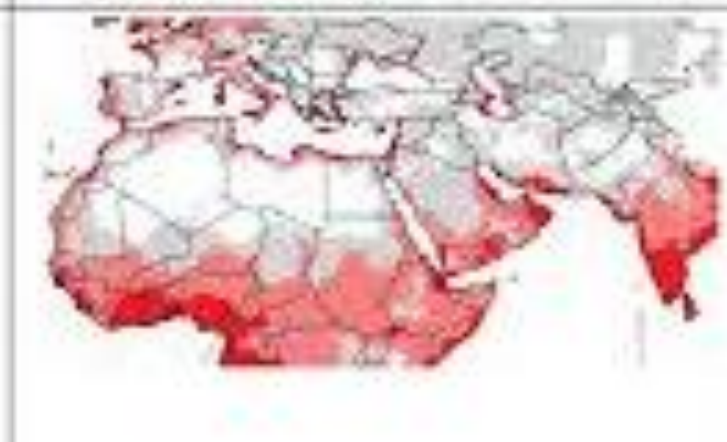
Rome, 29-31 March, 2017

# Climate-Based Potential Range of RPW

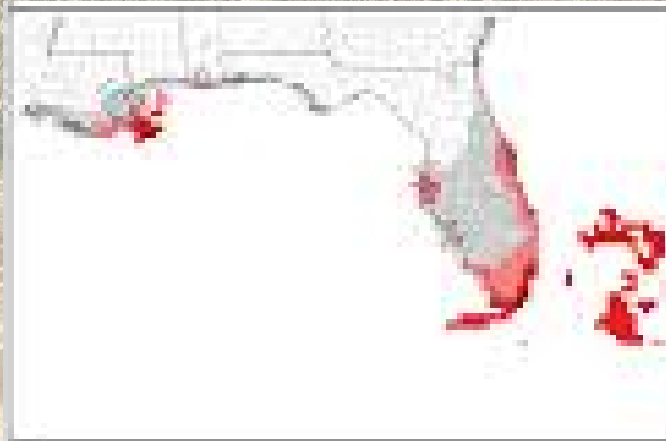
Southwest US



Southern Asia and Europe, Africa



Southeast US



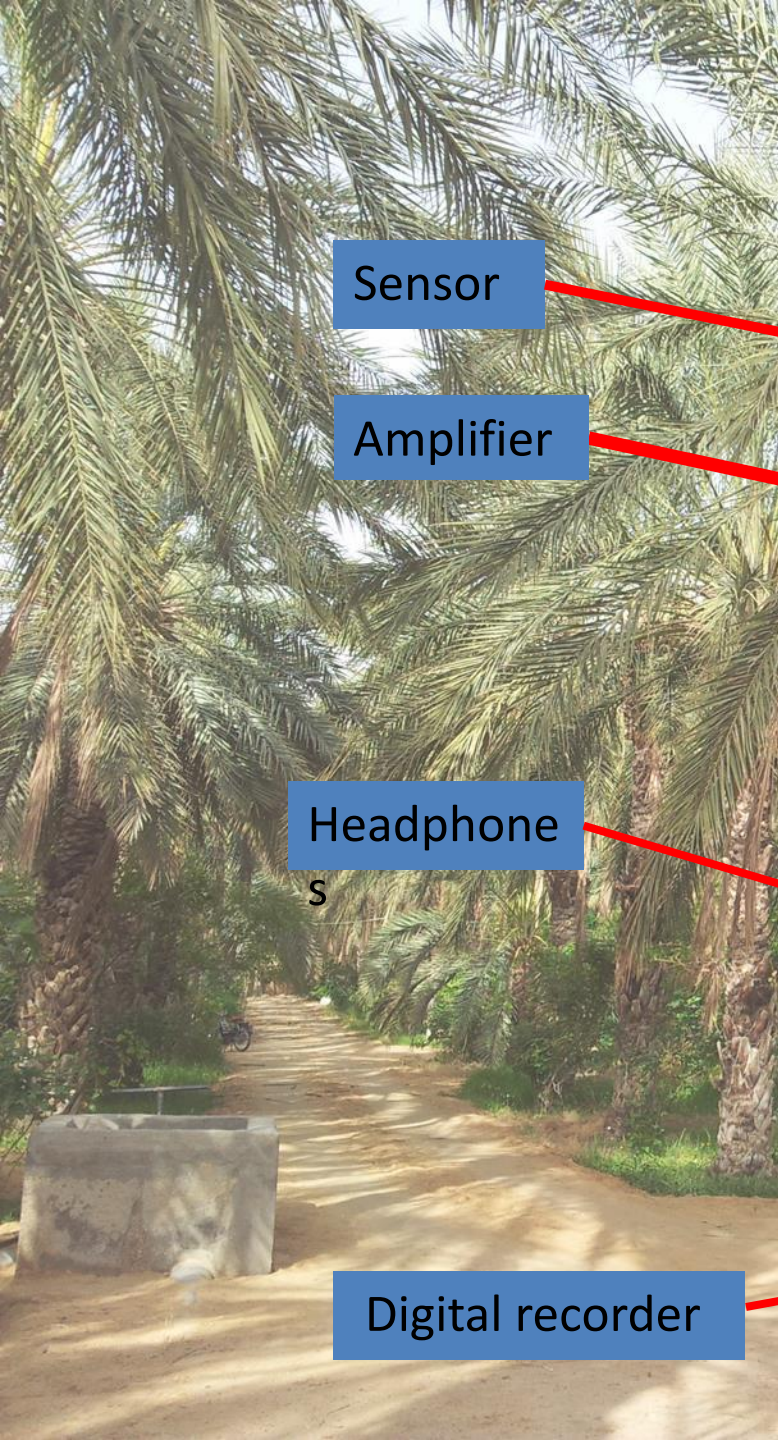
Caribbean



Early detection of adults and larvae is important for management



RPW life cycle: All stages except egg can be detected acoustically



Sensor

Amplifier

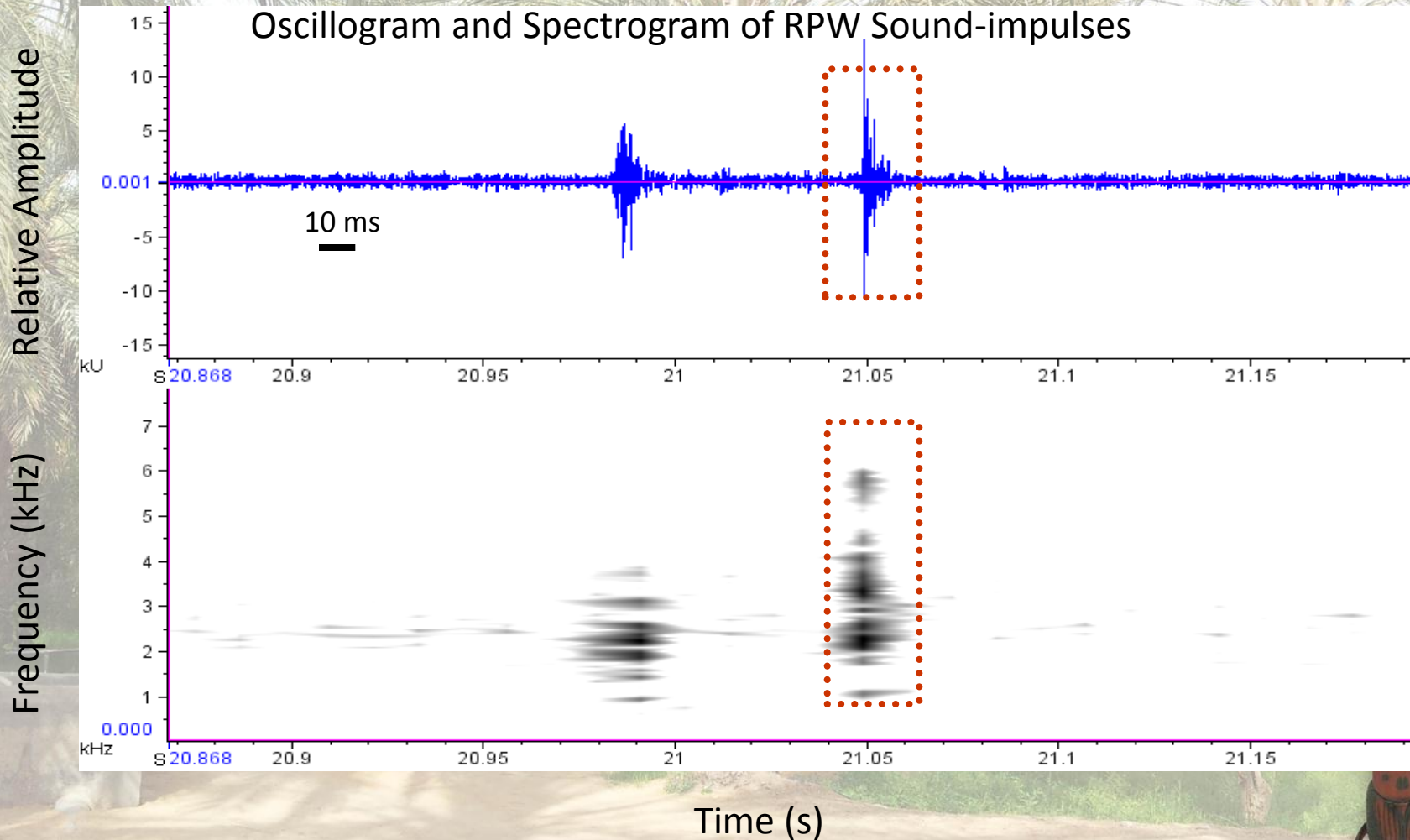
Headphone

s

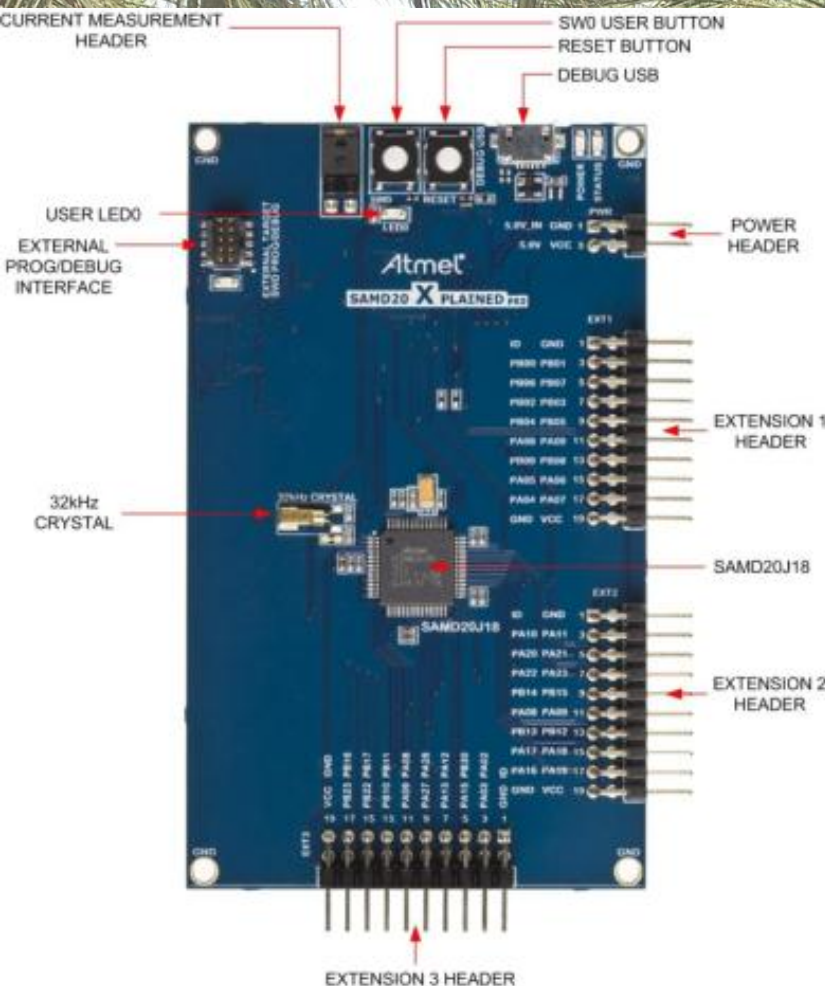
Digital recorder



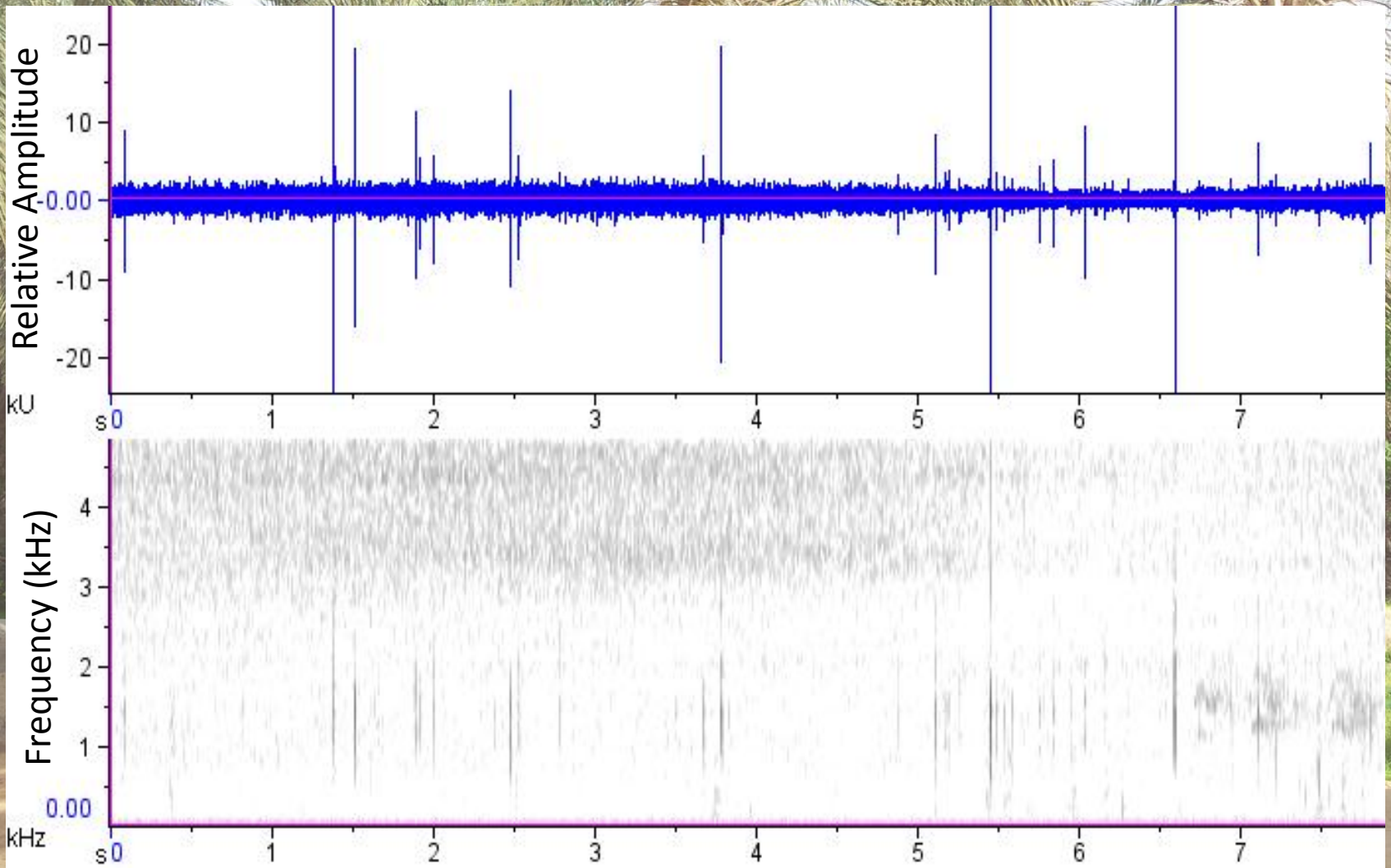
# Scientific Consultation and High-Level Meeting on Red Palm Weevil Management



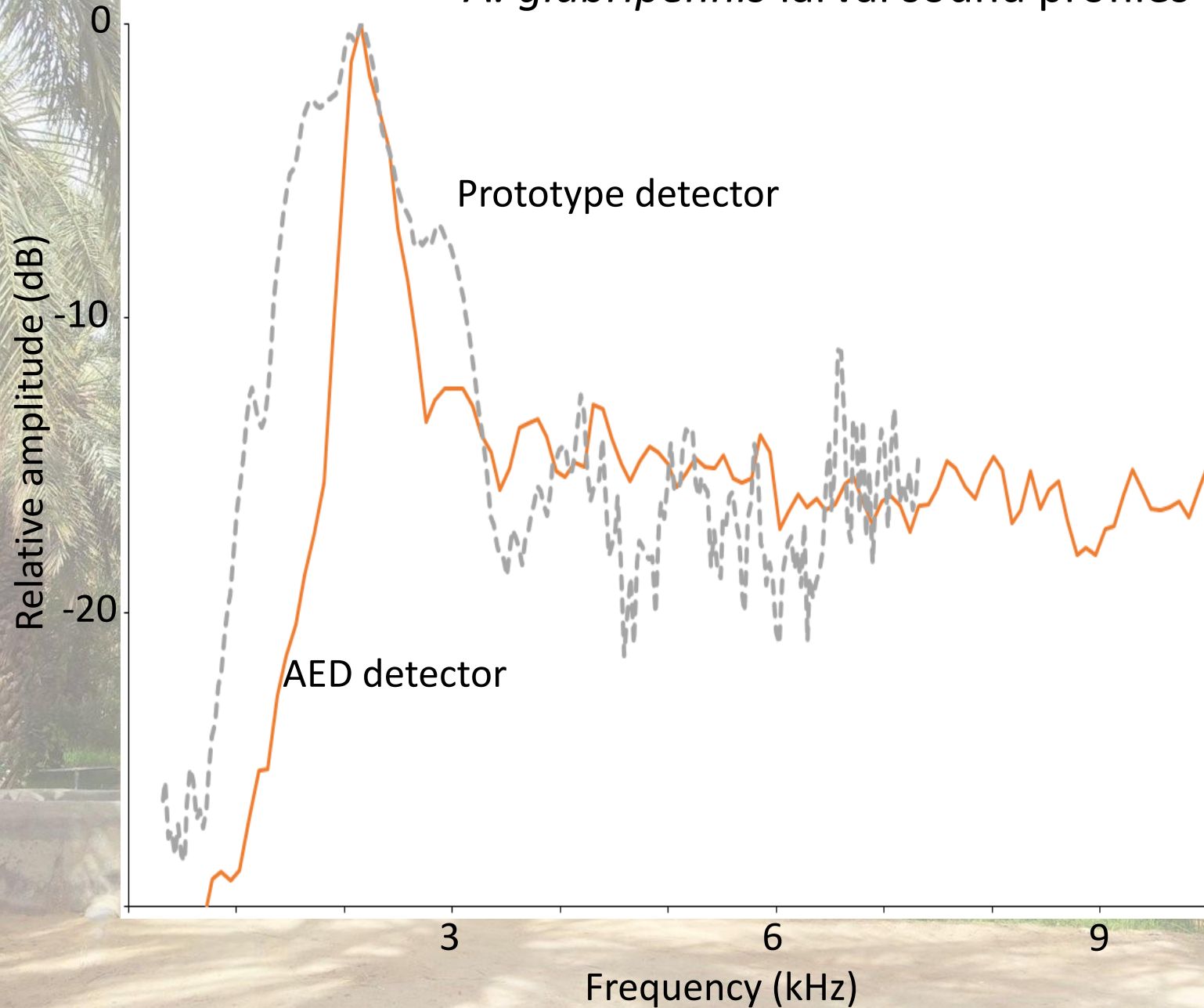
# Introduction of Onboard Signal Processing Capability



Example of *A. glabripennis* sounds collected with new microcontroller system sensing an electret microphone attached to red maple tree



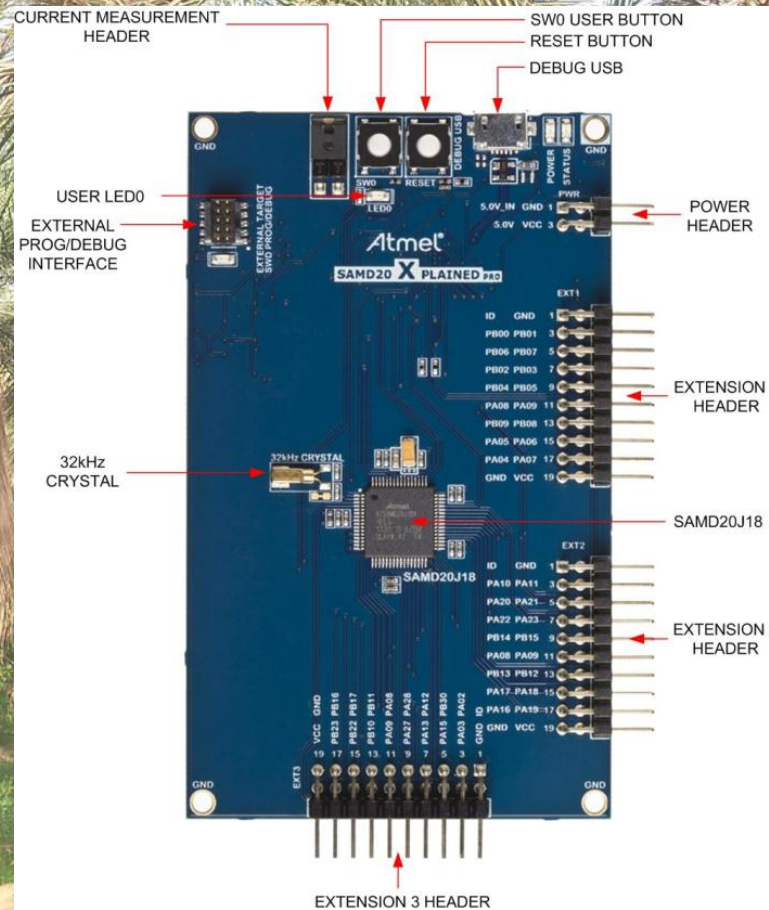
# *A. glabripennis* larval sound profiles





# Now Implementing on Latest (SAMG55) Version of Atmel microcontroller

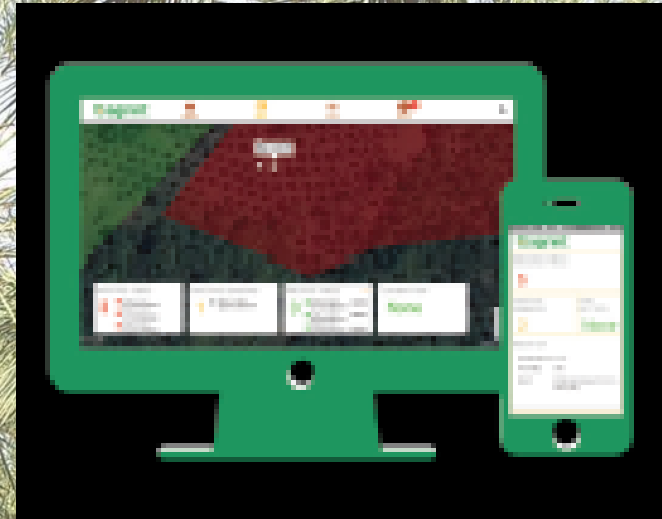
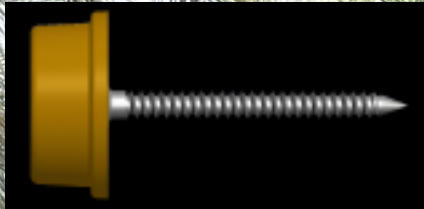
- Faster processing
- Less power usage
- More memory



# Future Directions in Field Implementation



## Similar Devices Advertised in 2017 by [www.agrint.net](http://www.agrint.net)



2015 (I Potamitis, Crete, Greece)  
Automated pheromone E-trap for RPW  
uses GPS and cell phones

2017 (I Potamitis, Crete, Greece)  
Unmanned Aerial Vehicles to identify abnormal crowns  
Of palm trees potentially infested with RPW  
Also can be used with RPW E-traps

## Acknowledgments

- H. Y. Al-Ayedh, (King Abdulaziz City for Science and Technology),
- Y. Aldryhim (King Saud University),
- Barukh Rohde, (University of Florida)
- Nathan Herrick (Florida A&M University)
- Muhammad Haseeb (Florida A&M University)
- Abe Brun-Kestler (Custom Engineered Solutions)

Research support provided by:  
King Abdulaziz City for Science and Technology  
Project Number 597-32, NSF fellowship, and  
Florida A&M University

