

Country Report Malaysia

Norazura A. Hamid
Department of Veterinary Services, Malaysia



Livestock Population 2013

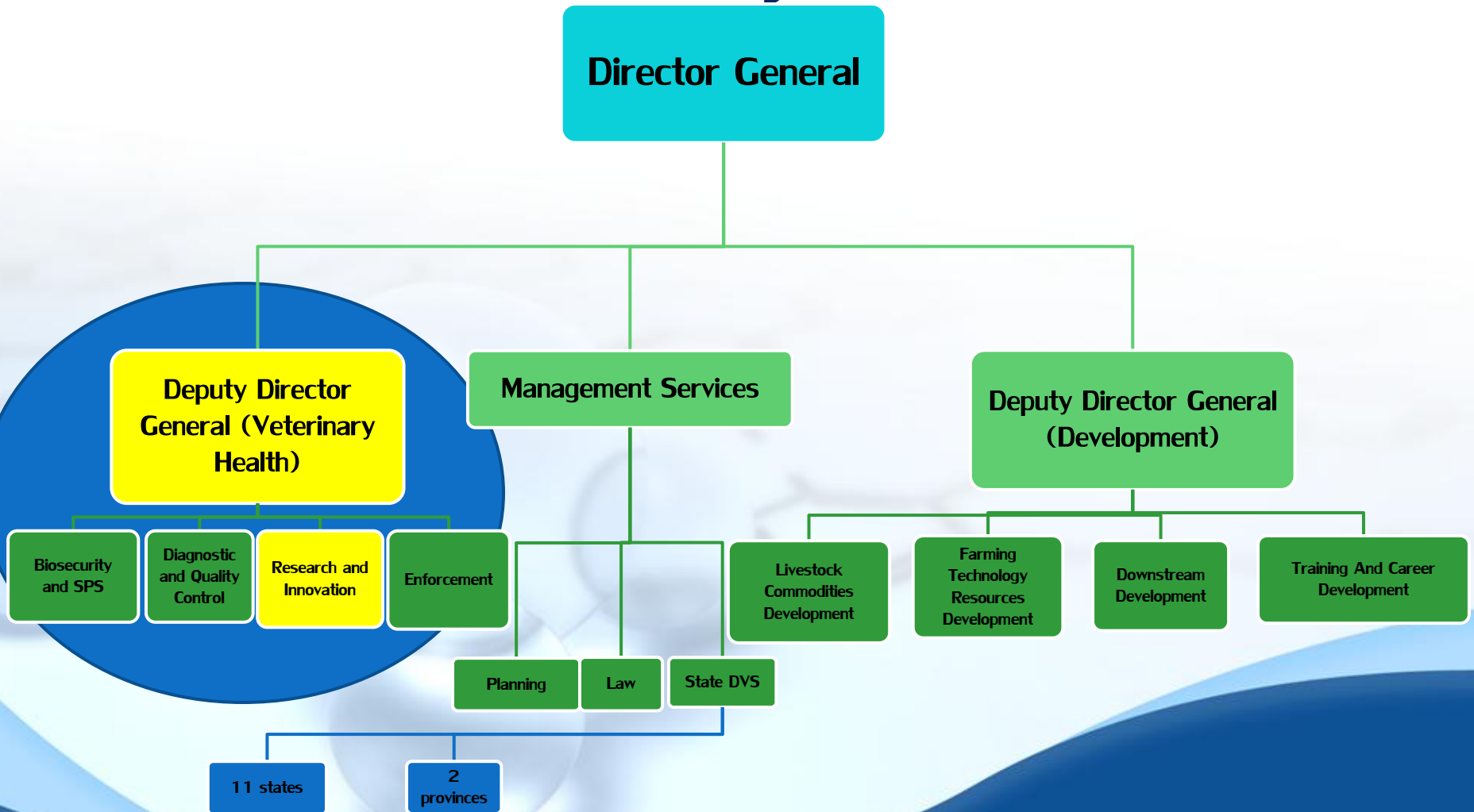
Region	Buffalo	Cattle	Goat	Sheep	Swine
Peninsular Malaysia	64,991	669,430	416,387	125,650	1,418,382
Sabah	45,995	66,093	50,584	2,089	63,108
Sarawak	7,059	15,631	14,844	2,111	335,171
TOTAL	118,045	751,781	482,280	129,850	1,816,661

Brucellosis Situation in Malaysia



	Tested samples	Tested positive	Prevalence rate
Brucella abortus	29, 960	1, 453	4.85%
Brucella melitensis	25, 636	209	0.80%

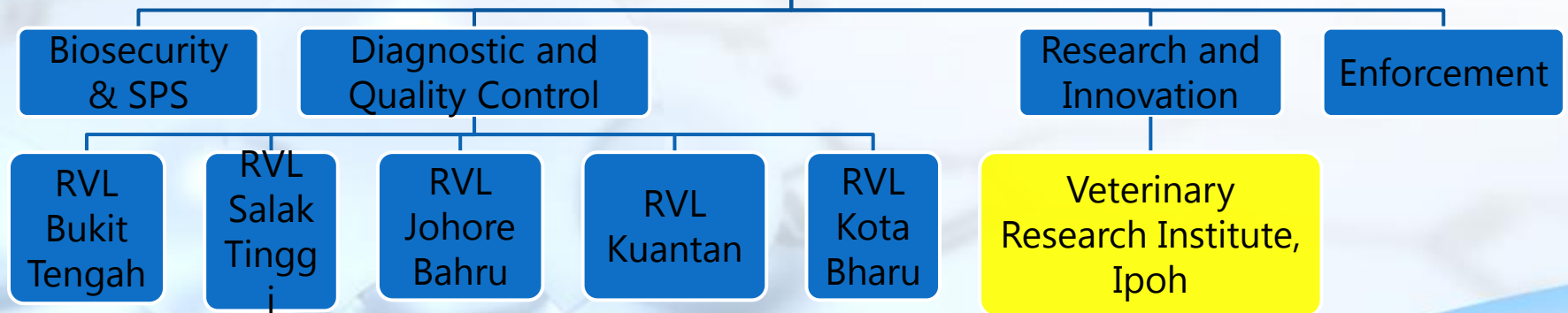
Department of Veterinary Services Malaysia



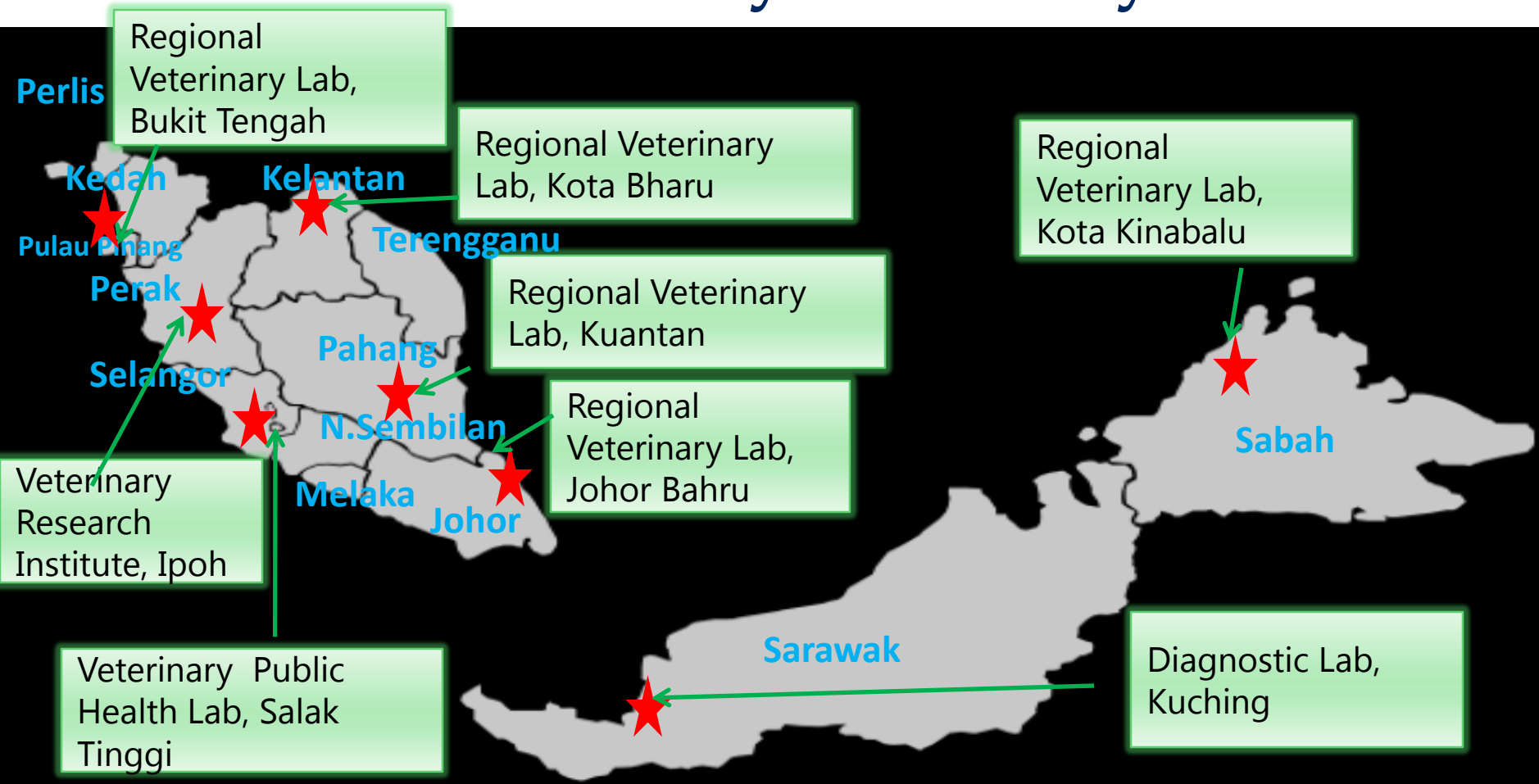
Veterinary Health Division Organization



Veterinary Health



List and Location Of Governmental Veterinary Laboratory



Veterinary Research Institute

RESEARCH AND INNOVATION DIVISION
Department of Veterinary Services Malaysia

Management Unit for
Intellectual Properties and Commercialization

VETERINARY RESEARCH INSTITUTE

RESEARCH ON APPLIED BIOTECHNOLOGY

Administration and
Financial Unit

Units

Epidemiology & Veterinary
Health Section

Diagnostic Technology &
Biologics

Biodiversity and Animals
Biotechnology

Production System and
Animal Feeding

Food Safety

Agribusiness

Units

Section

Ruminant Diseases

Avian Diseases

Zoonotic Diseases

Epidemiology

Herd Health

Mammalian Virology

Mammalian Bacteriology

Pathology Mammalian

Biochemistry

Viral Vaccine

Technology Product

Avian Virology

Avian Bacteriology

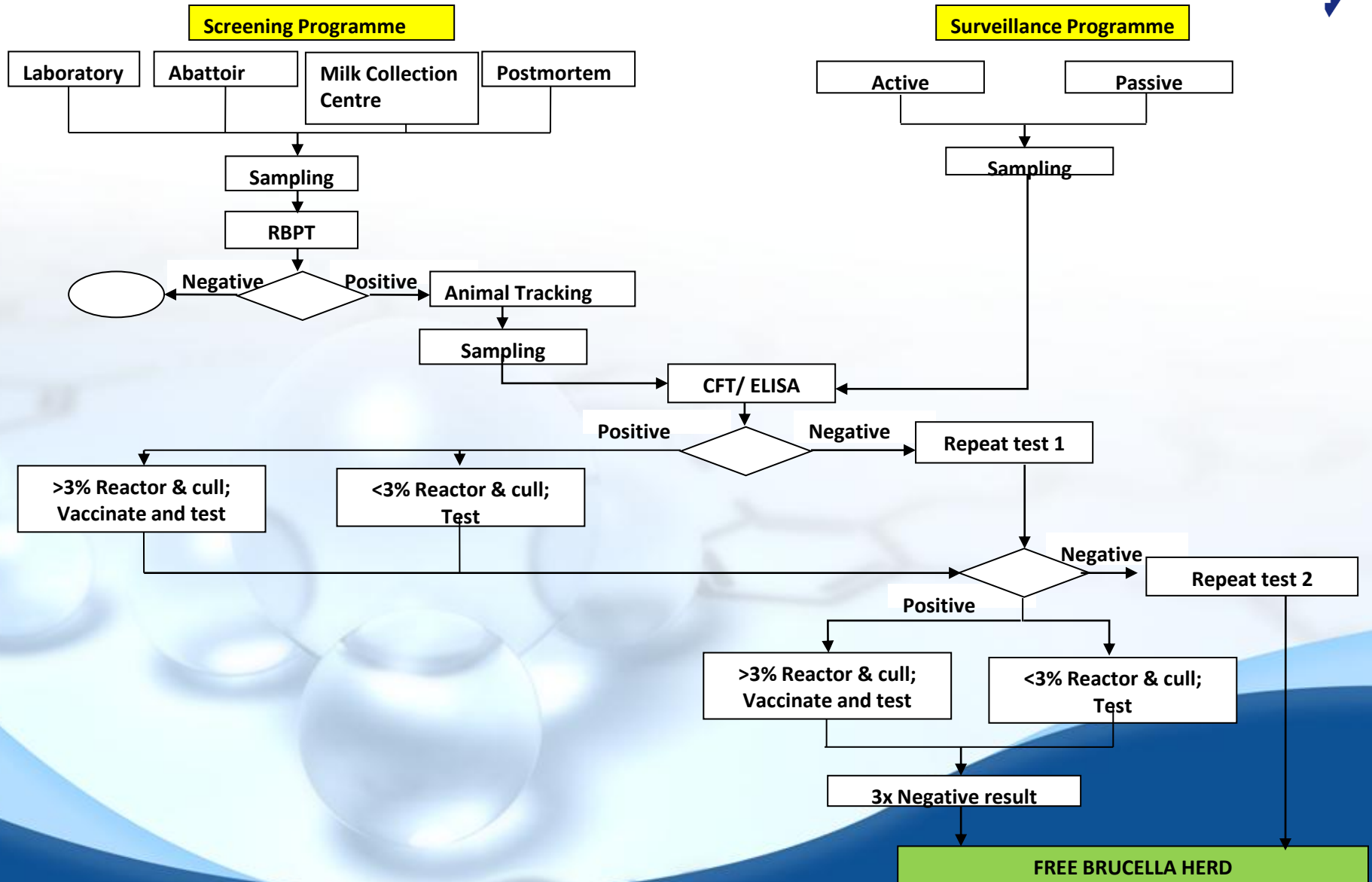
Avian Pathology

Immunology

Bacterial Vaccine

Parasitology

Surveillance/ Control Programme





Diagnostic Strategies in Regards to Brucellosis

- Bacteriology
 - Isolation from placenta, stomach and lung from aborted fetus; milk and teat secretion
- Serology (serum, vaginal discharge)
 - RBPT
 - CFT
 - ELISA
- Milk
 - MRT



PT Result

		RBT		CFT		iELISA		
		Test Performed on:	10/9/2013	Test Performed on:	11/9/2013	Test Performed on:		12/9/2013
		Antigen supplier:	NIAH	Antigen supplier:	VRI, IPOH	Antigen supplier:		In-house
		Antigen batch number:	-	Antigen batch number:	Batch 01/2013	Kit batch number:		Sep-13
		Antigen expiry date:	Jun-13	Antigen expiry date:	-	Kit expiry date:		Oct-13
	Tube ID:	Result ⁽¹⁾	Interpretation (P/N) ⁽²⁾	Result(3)	Interpretation (P/N) ⁽²⁾	OD	Calculating Index (%)	Interpretation (P/D/N) ⁽²⁾
Positive control		++	Positive	3/16	Positive	1.428	100	Positive
Internal positive control		-	-	-	-	-	-	-
Negative control		0	Negative	-	Negative	0.092	6.44%	Negative
1	381	0	Negative	3/8	Positive	1.242	81.40%	Positive
2	791	0	Negative	3/4	Positive	1.109	72.10%	Positive
3	59	++	Positive	3/8	Positive	1.204	78.70%	Positive
4	522	0	Negative	-	Negative	0.643	39.40%	Negative
5	1619	+	Positive	3/4	Positive	0.948	60.80%	Positive
6	880	0	Negative	-	Negative	0.134	3.80%	Negative
7	1163	++	Positive	1/8	Positive	1.305	85.80%	Positive
8	1259	+	Positive	1/8	Positive	1.118	72.70%	Positive
9	256	++	Positive	2/16	Positive	1.29	84.70%	Positive
10	101	+	Positive	1/8	Positive	1.143	74.40%	Positive
11	1071	0	Negative	3/4	Positive	1.065	69.00%	Positive
12	1468	0	Negative	-	Negative	0.177	6.80%	Negative
13	935	0	Negative	-	Negative	0.153	5.10%	Negative
14	415	0	Negative	-	Negative	0.699	43.30%	Negative
15	642	0	Negative	-	Negative	0.661	40.70%	Negative
16	1509	0	Negative	-	Negative	0.133	3.70%	Negative
17	1360	++	Positive	3/16	Positive	1.160	75.60%	Positive
1: Give the raw result(0 or +) and, if possible, the intensity of the reaction (0, +, ++, +++ or++++)						Positive cut-off (%):		>60
2: P=positive; N:Negative; D=doubtful						Doubtful cut-off (%):		60
3: Give the titre in IU/ml						Negative cut-off (%):		<60
						Incubation (short or overnight):		1 hour

Country Plan/Policy for Regional Collaboration on Diagnosis and Control of Brucellosis



Malaysia willing to collaborate in terms of diagnosis and control

Thank you

