

AGRICULTURAL STATISTICS SYSTEM IN INDONESIA



**Center For Agriculture Data and Information Systems,
Ministry Of Agriculture**

Indonesia

OUTLINE

- ▣ **Introduction**
- ▣ **Organization Of The Agricultural Statistics System**
- ▣ **Data Collection Systems**
- ▣ **Main Output**
- ▣ **Metodology**
- ▣ **Resources**
- ▣ **Desimination of Agricultural Statistics**

A high-angle, wide shot of a lush green valley filled with terraced rice fields. The fields are arranged in a series of curved, stepped patterns that follow the contours of the land. The water in the fields reflects the sky, creating a shimmering effect. In the background, a dense forest covers the hillsides, and a soft mist or haze hangs over the valley, adding a sense of depth and tranquility. The overall scene is peaceful and picturesque, showcasing traditional agricultural practices in a beautiful natural setting.

INTRODUCTION

INDONESIA IN THE WORLD MAP





THE FIVE LARGES ISLANDS OF INDONESIA

1. Sumatera 473,606 km² = 47.36 million ha
2. Java 132,107 km² = 13,21 million ha
3. Kalimantan 539,460 Km² = 53,95 million ha
4. Sulawesi 189,216 km² = 18,92 million ha
5. Papua 421,981 km² = 42.20 million ha

INDONESIA

Area : Land 1.9 millions Sq. Km; Sea 8 millions Sq. Km (including EEZ)

Population : 252, 434 Millions (2014)
50.21% live at rural area

Location : 6⁰ 08¹ North - 11⁰ South
94⁰45¹ - 141⁰ longitude

Dry Season : April - September
Wet Season : October - March.

INDONESIA ECONOMY 2013

Total GDP : 8,241 Million Rupiah

Share of Agric : 14.44%

Agric Households : 26.1 million (2013)

Total Employment : 118 million

Agric. Employment : 35.09%

Agriculture Export : US \$ 33,690 million

Agriculture Import : US \$ 15,337 million

An aerial photograph of a lush green valley featuring terraced rice fields. The fields are arranged in curved, stepped patterns that follow the contours of the land. In the background, there are rolling hills and mountains covered in dense forest, partially shrouded in a light mist. The overall scene is vibrant and scenic, representing a typical agricultural landscape.

ORGANIZATION OF AGRICULTURAL STATISTICS SYSTEM

Legal Frame Work

1. Act No : 16/1997 : Statistics System in Indonesia
2. Act No : 14/2008 for *Public Information Openness*
3. Government Regulation (PP) 51/1999 : Implementation of Statistics System
 - NSO (BPS-Statistics Indonesia) as the coordinator of the implementation of statistics.
 - Basic Statistics was organized by NSO
 - Sectoral Statistics, responsibility of each sector or in cooperation with NSO
4. Act No : 32/2004 : Regional Autonomy
 - NSO as the coordinator of the implementation of statistics

Over View of the Statistical System

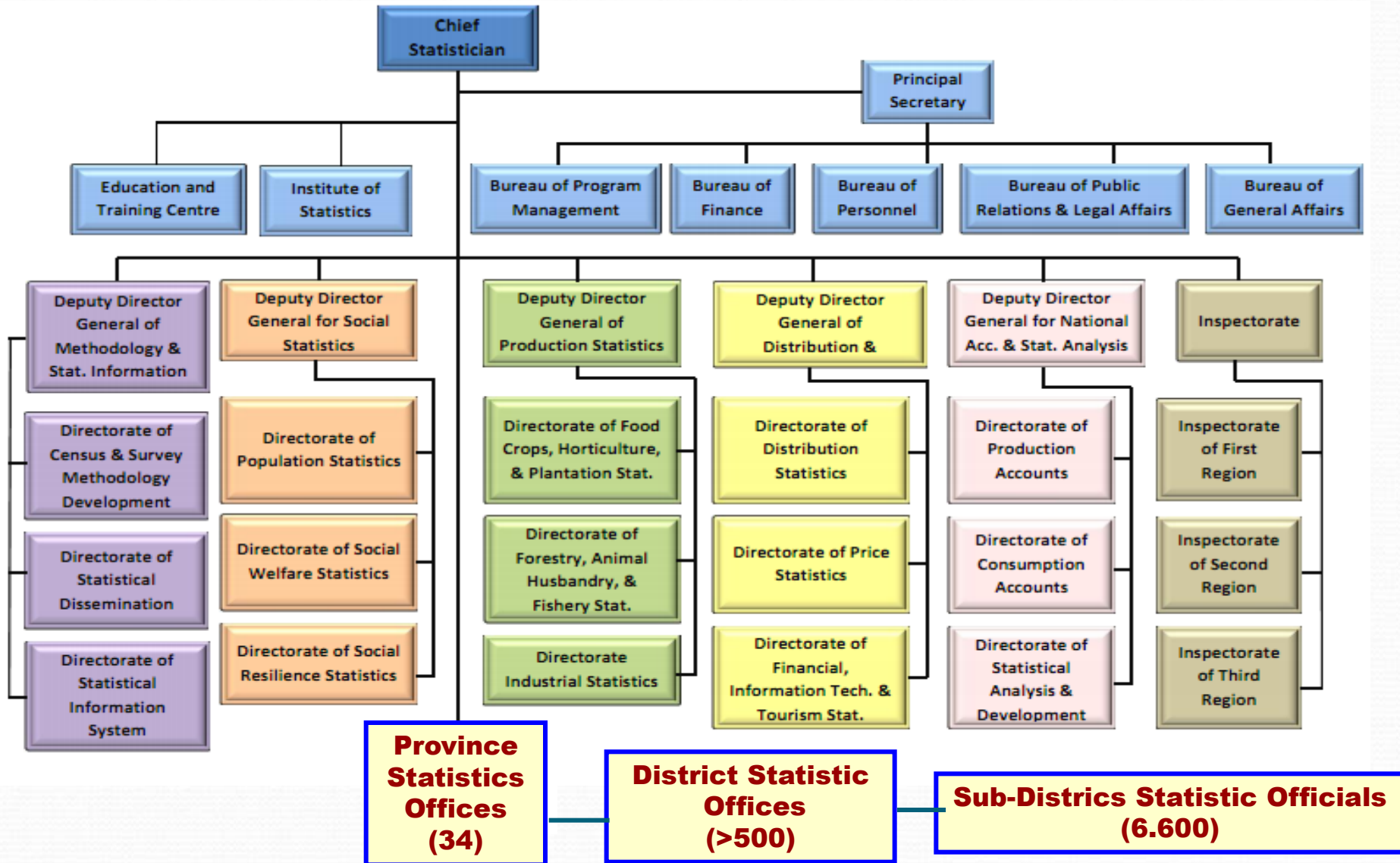
- **The Statistics Law, Act No. 16, 1997 provides the legal basis for statistical activities in Indonesia and mentions the BPS-Statistics Indonesia (BPS) as the executing agency for statistical activities.**
- **The Act also mandates BPS to assist all ministries including Ministry of Agriculture (MoA), Ministry of Marine Affairs and Fisheries, and Ministry of Forestry in conducting their sectoral statistics, and ministries are empowered to collect and compile their sectors for monitoring and evaluating their policies programs.**
- **Base on Act No 22, 1999, MoA could not directly manage its data collection from the district/municipality. Therefore, BPS, the MoA, and the autonomous local government authorities have made an agreement in providing sustainable agriculture data, especially food crops and horticulture crops.**

Over View of the Statistical System

- **The local government must continually collect data of planted and harvested areas for food crops and horticulture crops. Also the local government's staffs have to work together with BPS' staffs in sub district to collect a crop cutting survey for estimating productivity of food crops. Production and harvested areas of horticulture crops have to be collected by the local government.**
- **BPS is responsible to process and publish data of food crops and horticulture crops.**
- **BPS conducts a press release every four months to disseminate the food crops estimates and every year for special horticulture crops, i.e. red chili and shallot.**
- **BPS collects data of estate crops from all establishments with legal entity by mailing system. The filled questionnaires should be returned monthly to BPS. BPS also collect more detail annually by interviewing them. This method is also used for collecting establishment with legal entity for horticulture crops, livestock, and fishery.**

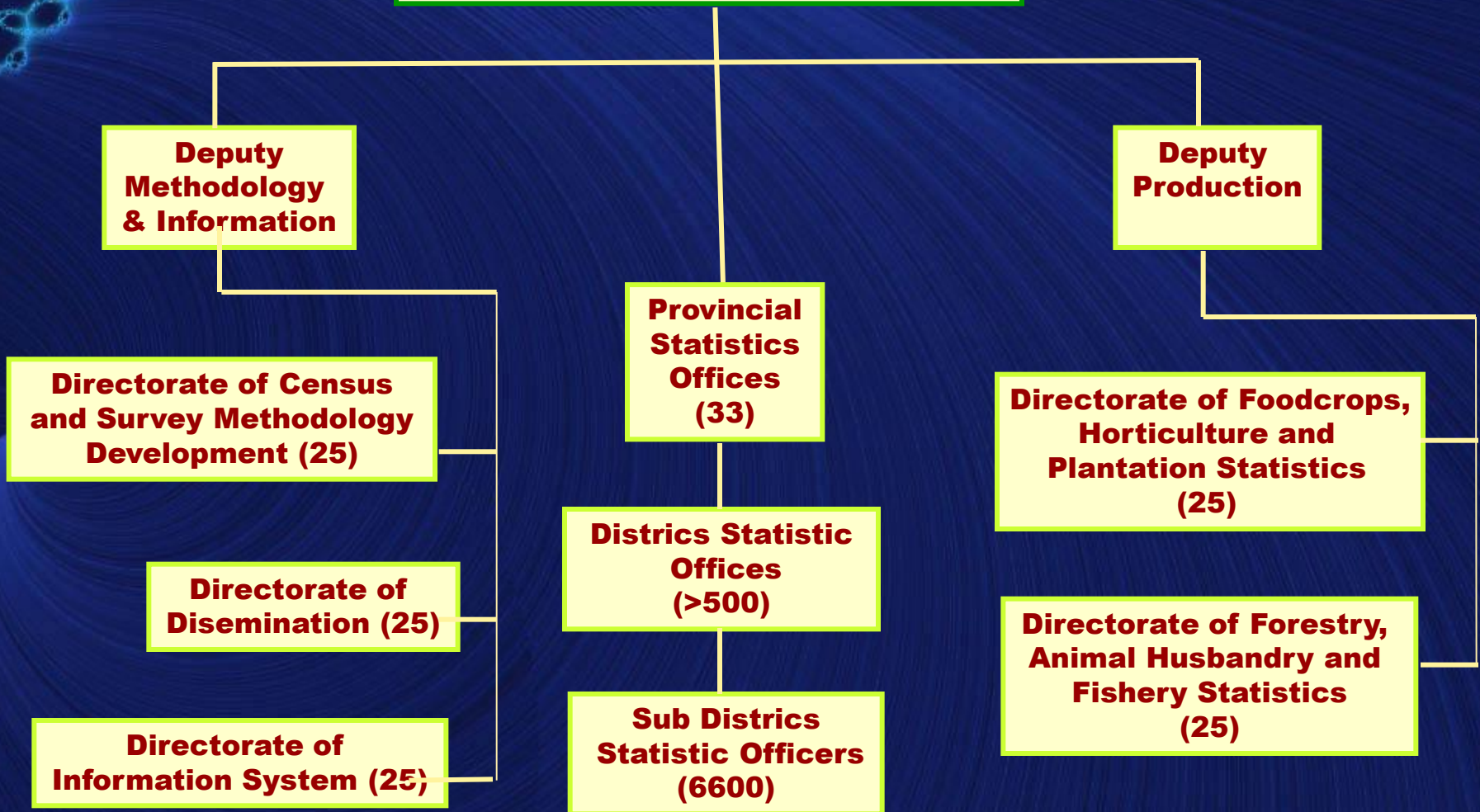
Institutional Set Up

Organization Of NSO-Indonesia

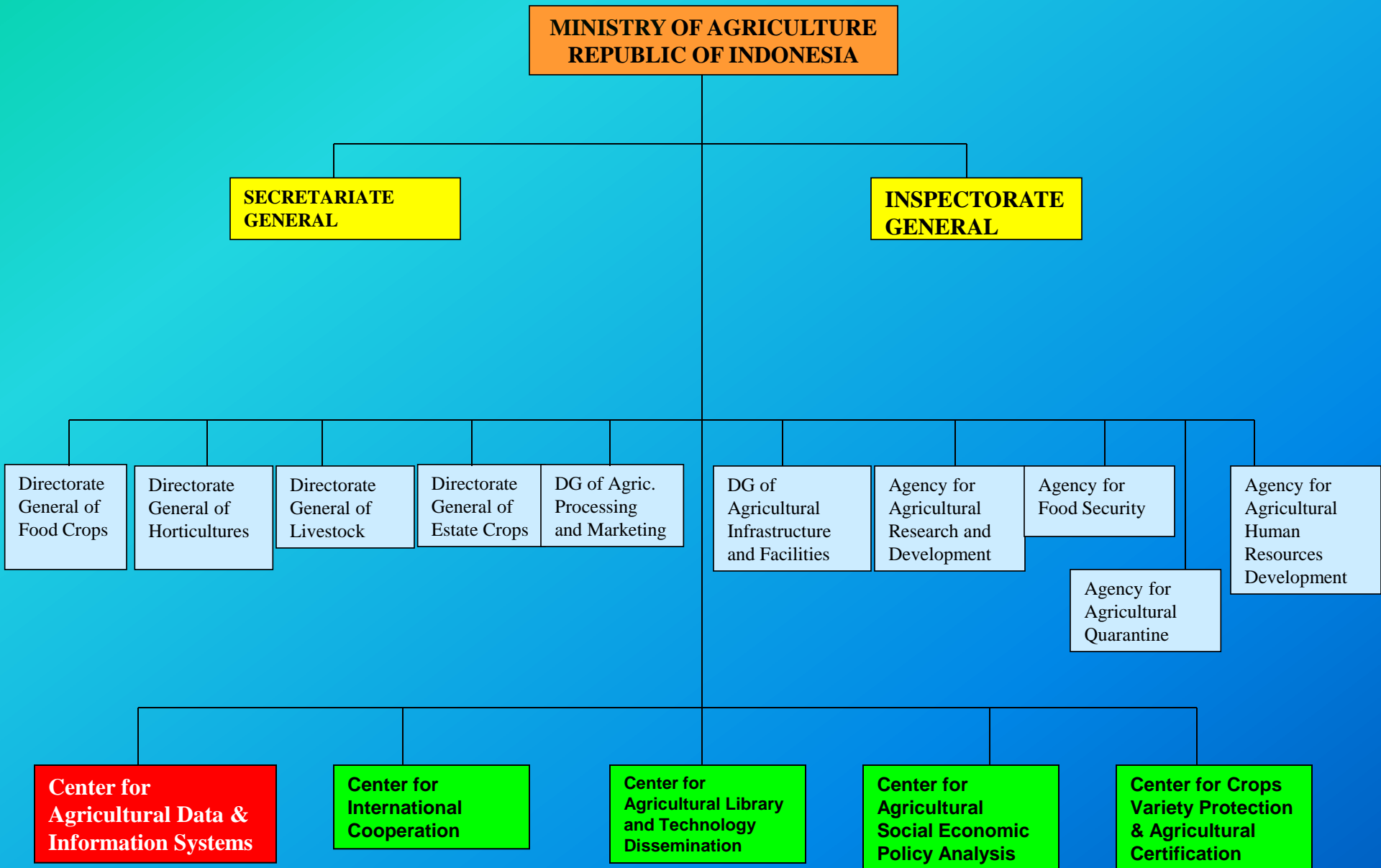


Organization Of NSO-Indonesia (Agricultural Related)

CHIEF OF STATISTICIAN



MOA Organizational Structure



CENTER FOR AGRICULTURAL DATA AND INFORMATION SYSTEMS (CADIS)

DIRECTOR

**GENERAL
AFFAIR DIVISION**

**PERSONNEL &
FACILITIES
SUBDIVISION**

**PLANNING &
FINANCE
SUBDIVISION**

**CROPS
STATISTICS DIVISION**

**NON CROPS
STATISTICS DIVISION**

**IS
DEVELOPMENT
DIVISION**

**FOOD CROPS
& LIVESTOCKS
SUBDIVISION**

**AGRIC INFRASTRUCTURE
& FACILITIES SUBDIVISION**

**IS APPLICATION
SUBDIVISION**

**HORTICULTURE &
ESTATE CROPS
SUBDIVISION**

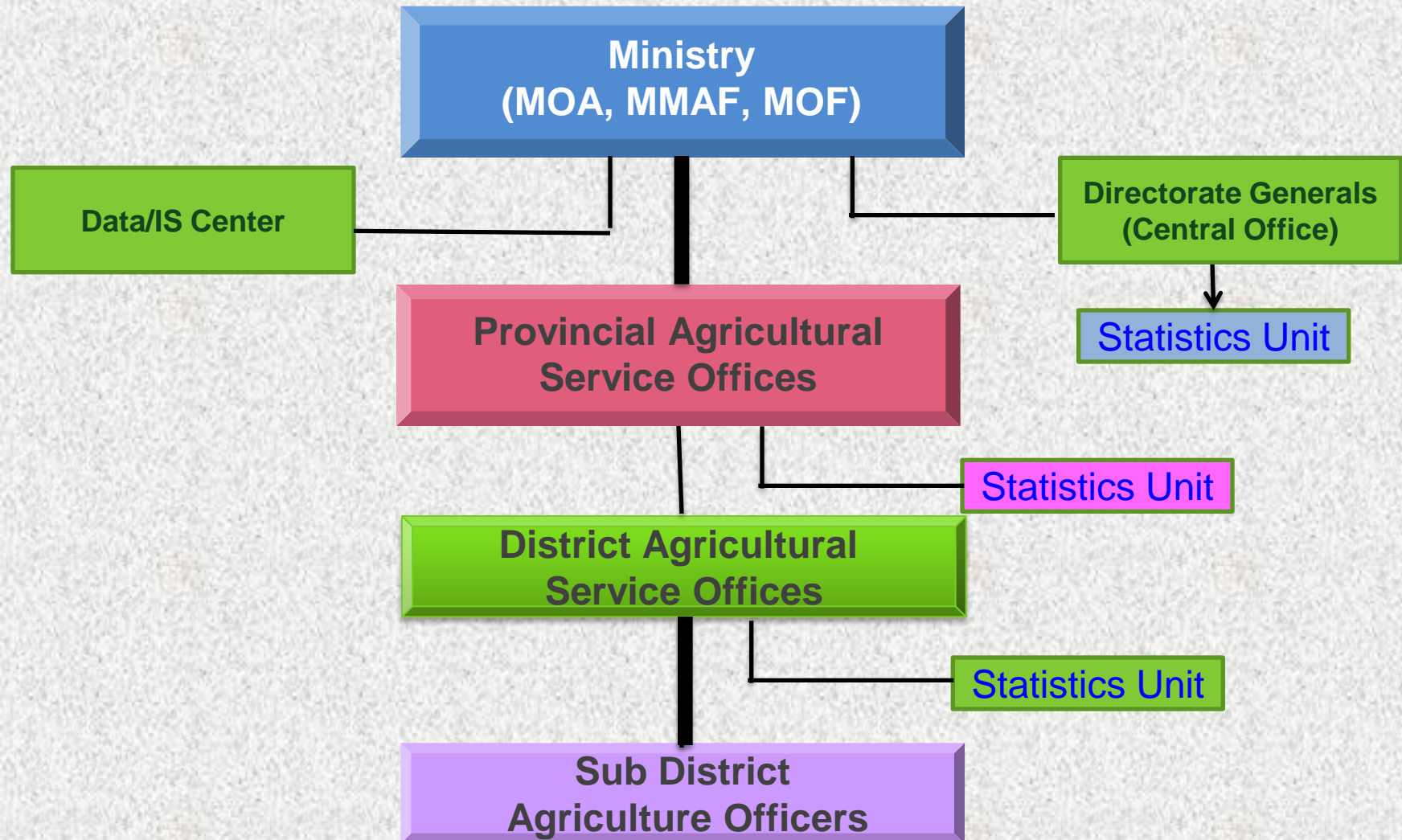
**AGRIC SOCIAL &
ECONOMIC
SUBDIVISION**

**COMPUTER
NETWORK
SUBDIVISION**

Functional Staffs:
• IT Specialists
• Statisticians

**MULTIMEDIA
APPLICATION
SUBDIVISION**

Organization of Agricultural Statistic at Ministerial Level



Integration and Coordination of Agricultural Statistics

1. NSO

- Census
- Surveys

2. MINISTRIES

- Surveys
- Administrative Reports

3. LOCAL AGRICULTURAL SERVICE OFFICES

- Surveys
- Administrative Reports

Agricultural Statistics System In Indonesia

**CENSUS
ONCE EVERY
TEN YEARS**

1. Census of Population (in the year ending 0 (zero))

2. Census of Agriculture (in the year ending 3)

Agriculture Statistics

Fisheries Statistics

Forestry Statistics

3. Census of Economy (in the year ending 6)

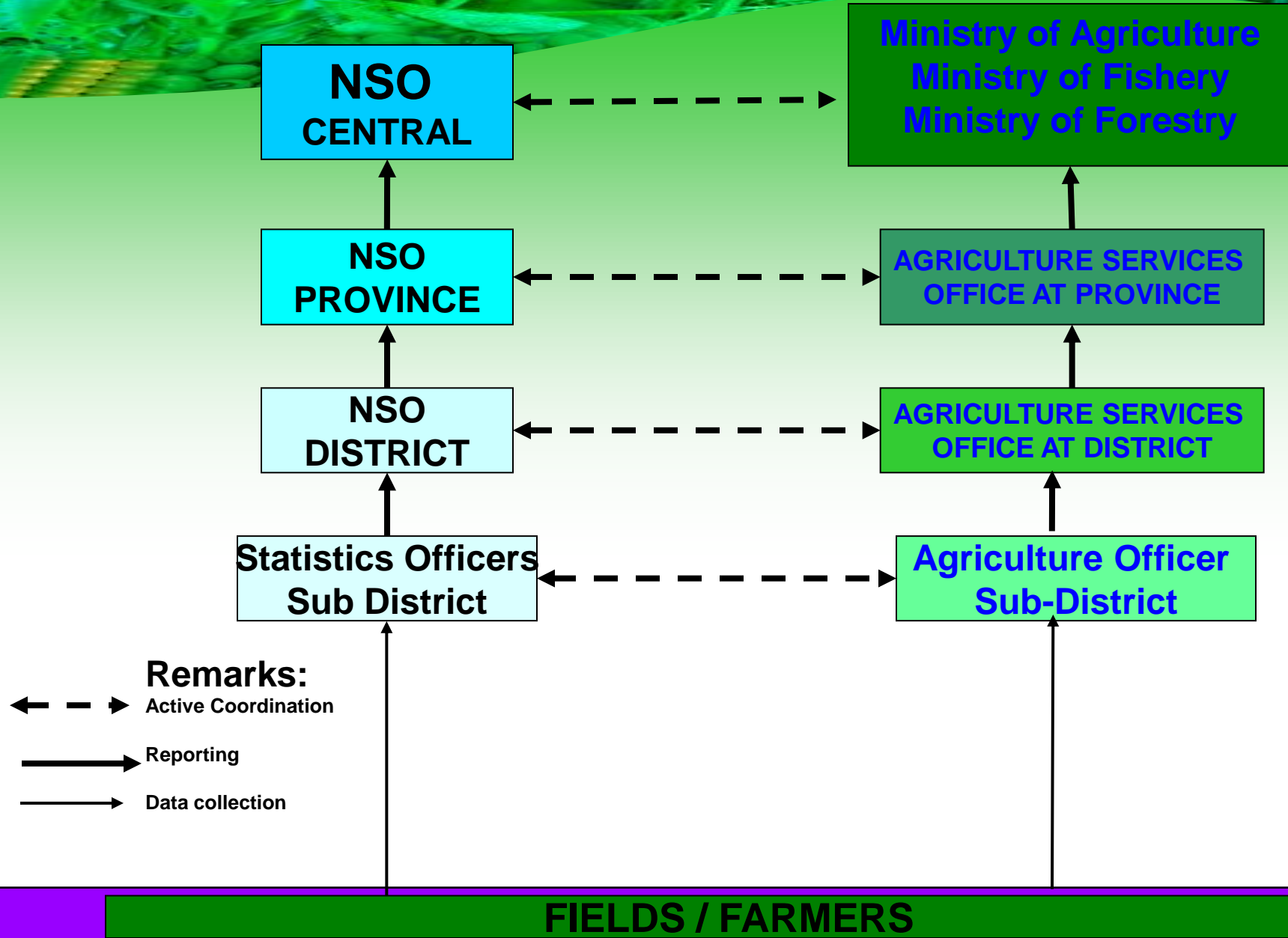
- Identify the population of economic activities
- update the directory
- Create a map of economic activities distributions

- **Agriculture Household**
- **Agriculture Establishment**
- **Characteristics of Agriculture Activities**

An aerial photograph of a lush green valley featuring terraced rice fields. The fields are arranged in a series of curved, stepped terraces that follow the contours of the land. The water in the fields reflects the sky, creating a shimmering effect. In the background, there are rolling hills and mountains covered in dense green forest. The overall scene is peaceful and scenic, with soft lighting suggesting early morning or late afternoon.

DATA COLLECTION SYSTEM

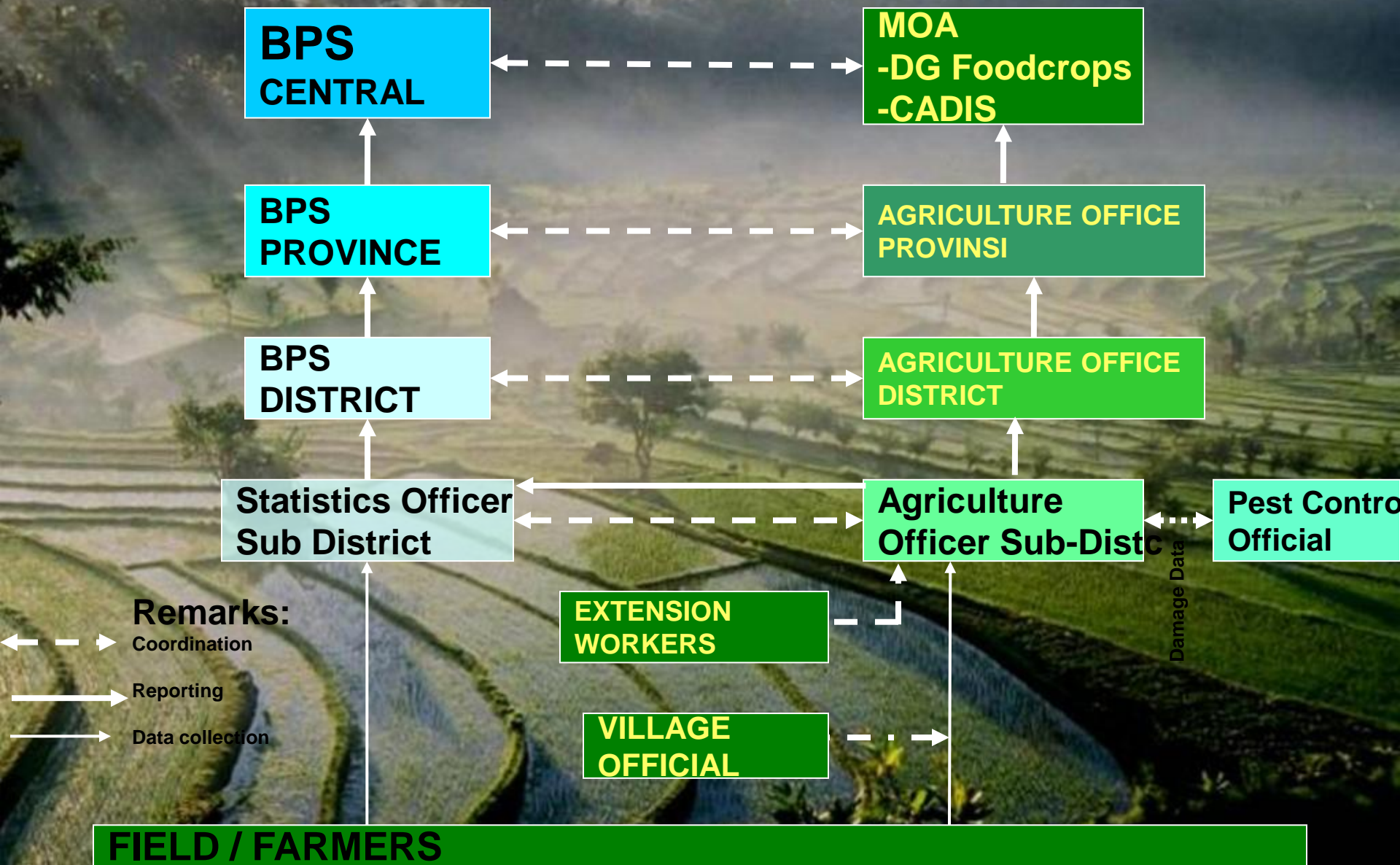
Coordination of Agricultural Statistics

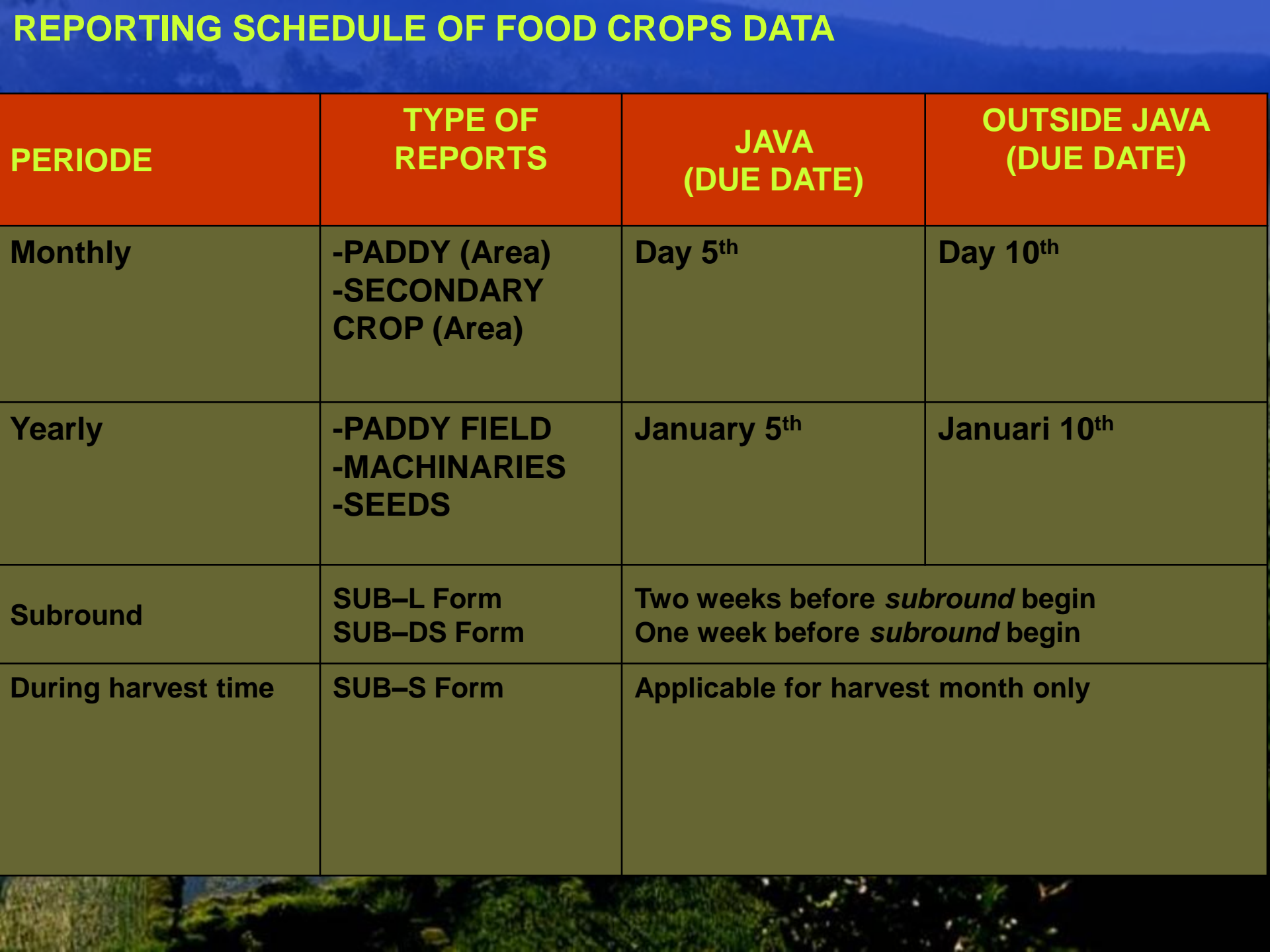


1. FOODCROPS DATA



DATA FLOW for FOODCROPS





REPORTING SCHEDULE OF FOOD CROPS DATA

PERIODE	TYPE OF REPORTS	JAVA (DUE DATE)	OUTSIDE JAVA (DUE DATE)
Monthly	-PADDY (Area) -SECONDARY CROP (Area)	Day 5 th	Day 10 th
Yearly	-PADDY FIELD -MACHINARIES -SEEDS	January 5 th	Januari 10 th
Subround	SUB-L Form SUB-DS Form	Two weeks before <i>subround</i> begin One week before <i>subround</i> begin	
During harvest time	SUB-S Form	Applicable for harvest month only	

Official Release of Production Figures

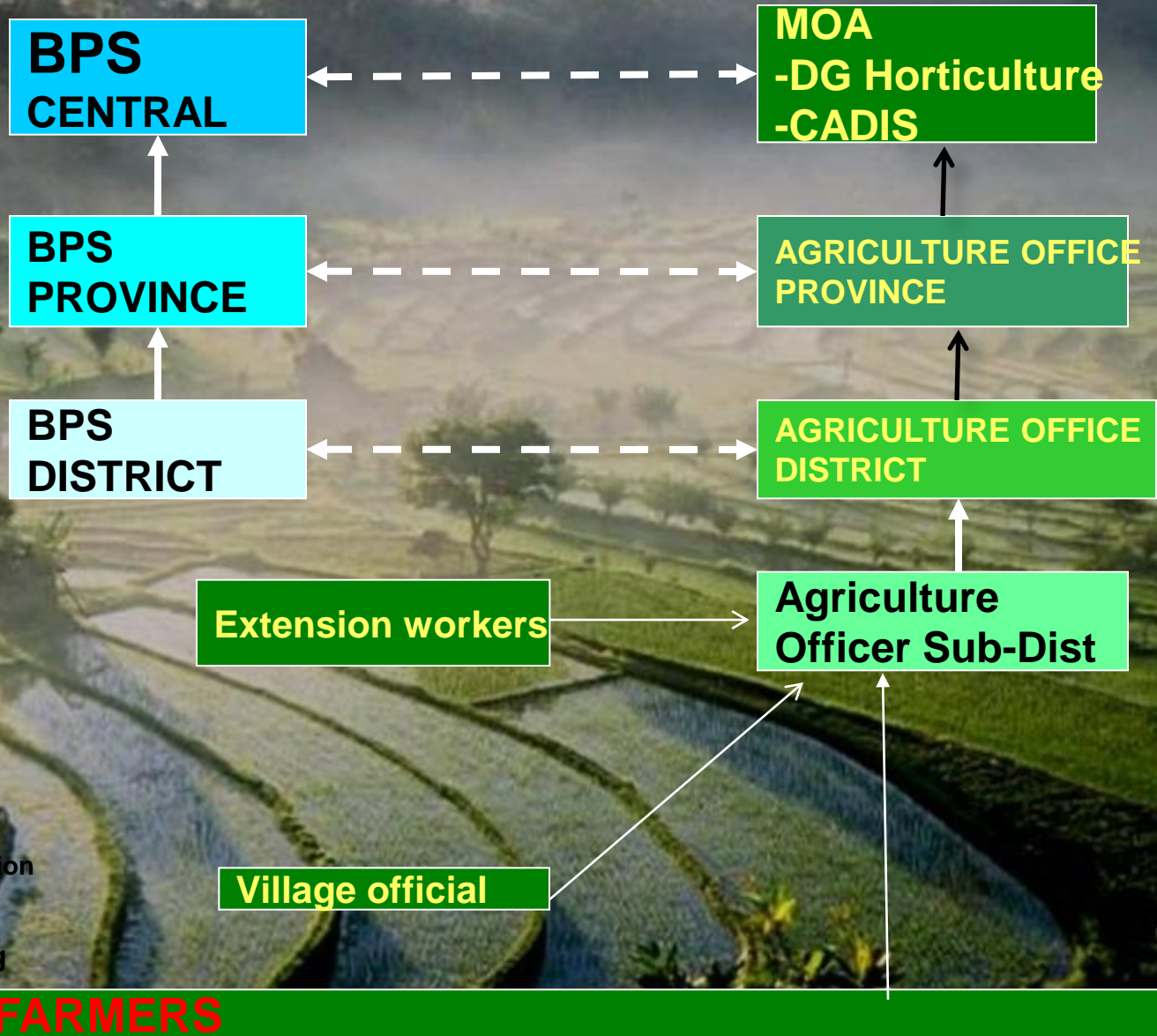
Status	Release Calendar (year t)	SUBROUND		
		January-April	May-Augustus August	September-December
1 Forecast I (t)	Early July	REAL	FORECAST	
2 Forecast II (t)	Early Nov	REAL		FORECAST
3 Preliminary (t-1)	Early March	REAL (<i>data not yet final</i>)		
4 Final (t-1)	Early July	REAL (<i>data has been final</i>)		

- ▶ Forecast II is released : Forecast I will be invalid
- ▶ Preliminary Figure is released : Forecast II → invalid
- ▶ Final Figure is released : Preliminary Figure → invalid

2. Horticulture Data



REPORTING DATA FLOW FOR HORTICULTURE



REPORTING SCHEDULE FOR HORTICULTURE DATA

No	TYPES OF REPORT	PERIODE	CONTENT
1.	SPH-SBS (Vegetables and fruits, seasonal)	Monthly	Planted area, harvested area, damaged area, new planted area, production, farmers price
2.	SPH-BST (Vegetables and fruits, yearly)	Quarterly	Number of: trees, cut trees, new plants, un-productive plant, productive plant, damaged plant, end of quarter plant, production, Produksi, farmers price
3.	SPH-TBF (Biofarmaka)	Quarterly	Planted area, harvested area, damaged area, new planted area, production, farmers price
4.	SPH-TH (ornamental crops)	Quarterly	Planted area, harvested area, damaged area, new planted area, production, farmers price
5.	SPH-ALSIN (Tools and machinaries)	Yearly	Number of: good tools/machines, broken tools/machines, total tools/machines
6.	SPH-BN (Seeds)	Yearly	Number of producers, total area, production, traded seeds, seed used

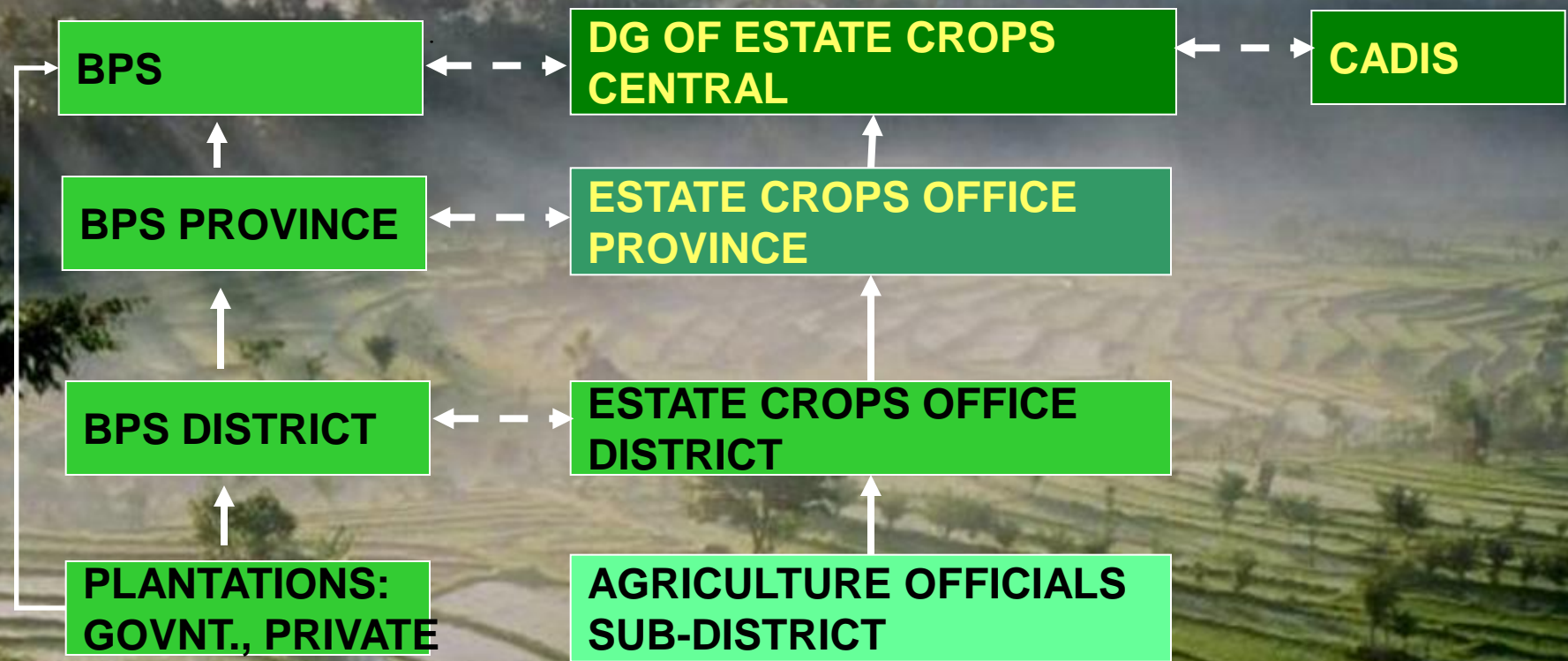
VALIDATION AND VERIFICATION

- Yearly data: area, production, productivity
- DATA t-1
- District Level: BPS and Local Agriculture Office
- Province Level: BPS and Local agriculture office
- Central level: BPS, Local agriculture office, DG of Horticulture, CADI

3. ESTATE CROPS DATA



REPORTING DATA FLOW FOR ESTATE CROP DATA



Remarks:

← - - - → Coordination

→ Reporting

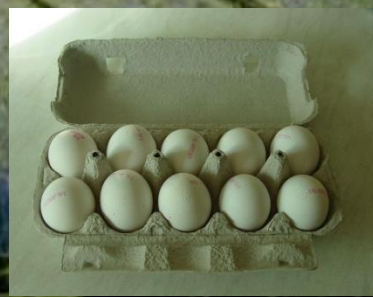
ESTATE CROPS DATA COLLECTION METHOD

METHODE	TYPE OF DATA	PERIODE	REMARKS
Complete report	Area, production, yield	Yearly	
Sampling	Productivity		Still in development

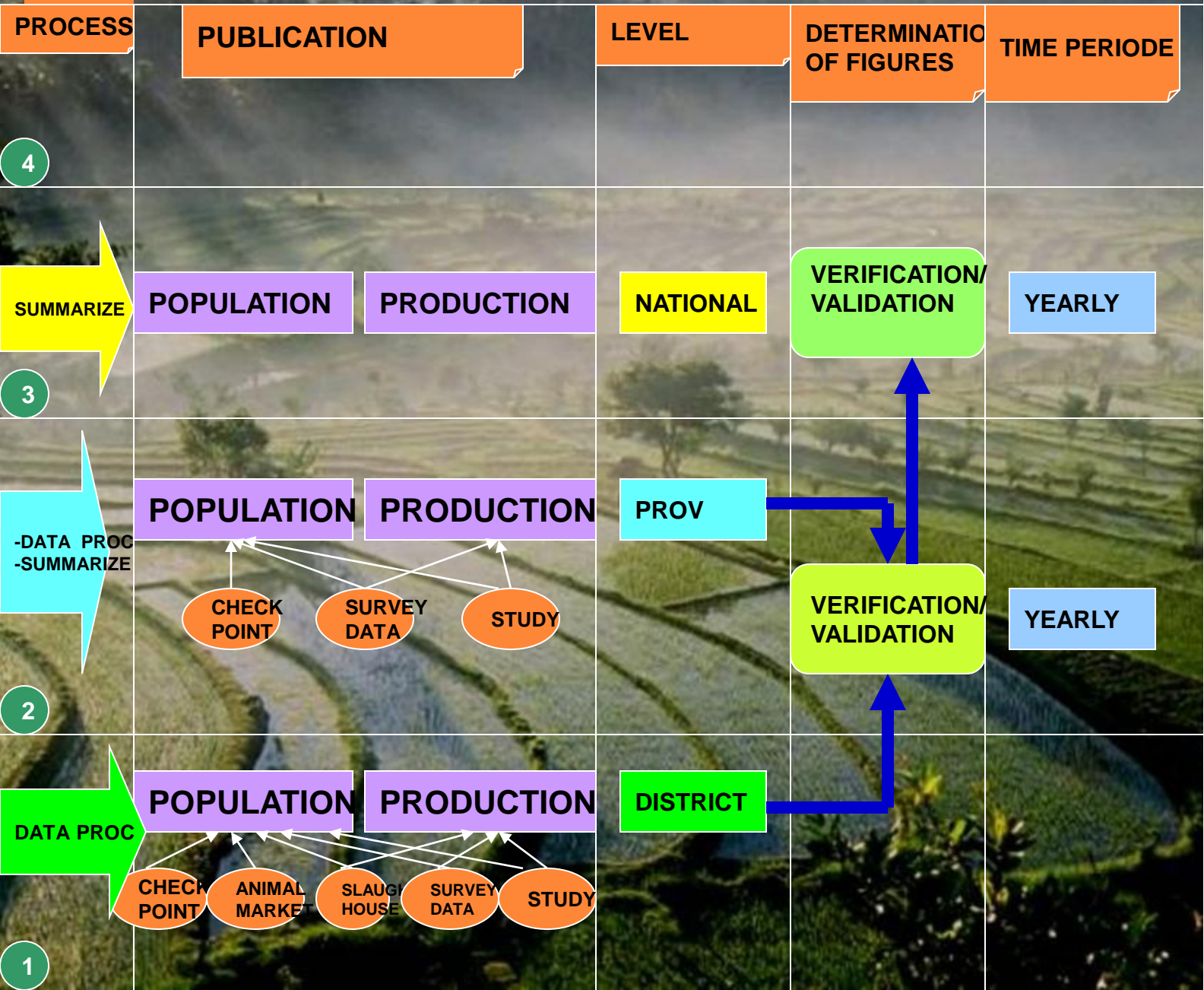
- Number of commodities: **22**
12 major commodities dan 10 other commodities
- Big Plantation: **BPS**, Small farm: **Estate crop office**



4. LIVESTOCKS DATA



REPORTING DATA FLOW FOR LIVESTOCKS



LIVESTOCK DATA

MAJOR DATA

POPULATION



BEEF CATTLE

DAIRY CATTLE

BUFFALO



HORSE

GOAT

SHEEP



PIG

NATIVE CHICKEN

BROILER

LAYER

DUCK

PRODUCTION



MEAT



EGG



MILK

SERIES OF DATA

1969 - 2014

1969 - 2014

1969 - 2014

1969 - 2014

1969 - 2014

1969 - 2014

1969 - 2014

1969 - 2014

1981 - 2014

1969 - 2014

1969 - 2014

1969 - 2014

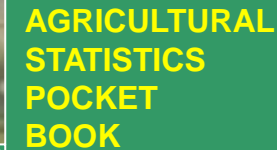
1969 - 2014

1969 - 2014

PUBLICATIONS



AGRICULTURAL
STATISTICS



AGRICULTURAL
STATISTICS
POCKET
BOOK



AGRICULTURAL
STATISTICS
DATABASE



WEB
BASE

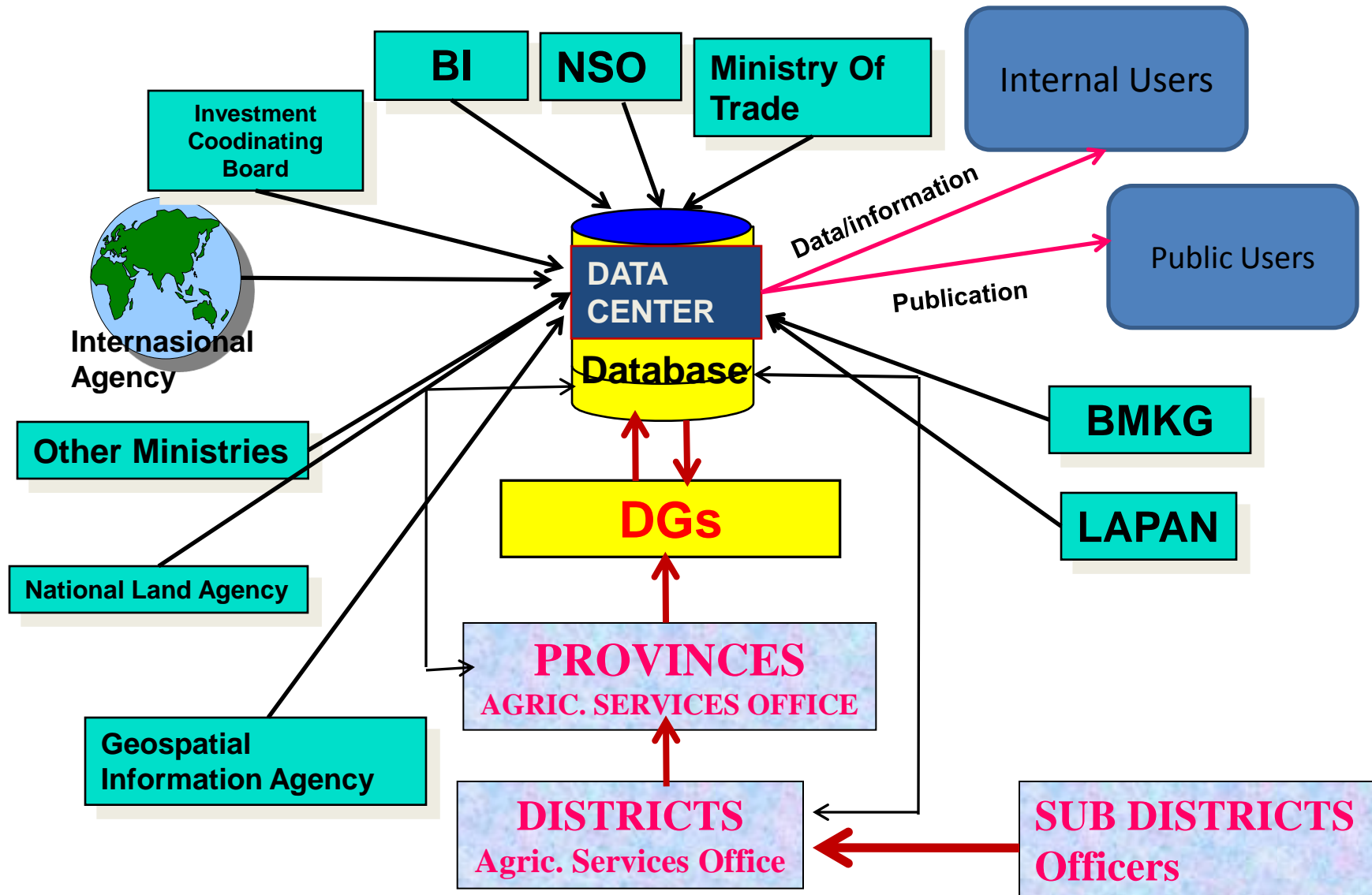
ANALYSIS



LIVESTOCK
OUTLOOKS



Data and Information Network at Ministerial Level



An aerial photograph of a lush green valley with terraced rice fields. The fields are arranged in curved, stepped patterns on the slopes of the hills. In the background, there are more hills and mountains under a clear sky. The overall scene is peaceful and scenic.

**MAIN OUTPUT OF
AGRICULTURAL STATISTICS
SYSTEM**

Agricultural Data Classification

▣ **Upstream/Input Data:**

Machineries, Fertilizer, Pesticide, Seed, Natural Resources and Capital Resources

▣ **On-farm/Production Data:**

- **Food crops**
- **Horticulture**
- **Livestocks**
- **Estate crops**
- **Forestry**
- **Fisheries**

▣ **Down-stream Data :**

- **Processing, Trading, GNP, Farmer's Term of Trade, Investment**

▣ **Supporting Data:**

- **Human resources**
- **Technology resources**

Detail Output of The Agricultural Statistics

No	Indicator	Responsible Agency	Level	Most Recent Data	Source of data
I	Agricultural Input				
	Agricultural land	National Land Agency	Regional	2010	Administratif
	Land Use	NSO	Regional	2010	Administratif
	Fertilizer	MOA	National	2012	Administratif
	Pesticides	MOA	National	2012	Administratif
	Machinery	MOA	National	2012	Administratif
	Agricultural Credit	MOA	National	2012	Administratif
	Seeds	MOA	National	2012	Administratif
	Breeds	MOA	National	2012	Administratif
II	On Farm				
	Harvested Areas	MOA	Province	2013	Administratif
	Yield	MOA	Province	2013	Survey
	Production	MOA	Province	2013	Counting
	Fishery Product	Ministry of Fishery	Province	2012	Administratif
	Forestry Product	Ministry of Forestry	National	2012	Administratif
III	Consumtion				
	Agricultural Consumption	NSO	National	2012	Survey
IV	Trade				
	Export and Import	NSO/Custom	nasional	2013	Administratif
	Producer and Wholesale Prices	MOA	Regional	2013	Administratif
	Market Prices	Ministry of Trade	Regional	2013	Administratif
V	Other Indicator				
	Pests and diseases	MOA	Province	2013	Administratif
	Climate	BMKG	National	2012	Administratif
	Number of Household	NSO	Province	2013	Census
	Agricultural Employment	NSO	Province	2013	Survey
	Poverty in Agriculture	NSO	Province	2013	Survey
	Agricultural Income	NSO	National	2003	Survey
	Agricultural Term of Trade	NSO	National	2013	Counting
	Agricultural GDP	NSO	National	2013	Counting
	Agricultural Cost Structure	NSO	National	2010	Survey

An aerial photograph of a lush green valley featuring terraced rice fields. The fields are arranged in a series of curved, stepped patterns that follow the contours of the land. The water in the terraces reflects the sky, creating a shimmering effect. In the background, there are rolling hills and mountains covered in dense green forest. The overall scene is peaceful and scenic, representing a typical agricultural landscape in a mountainous region.

METHODOLOGY USED IN AGRICULTURAL STATISTICS

1. Census

- Agricultural Census : NSO

2. Survey

- Sampling Frameworks : NSO
- Household Wage Structure : NSO
- Agricultural Commodities Cost Structure : NSO
- Consumption Survey : NSO
- Agriculture Workforce : NSO
- Livestock Parameter Survey : MOA
- Yield Survey : NSO and MOA
- Marine Fisheries Survey and Aquaculture Survey : MMF

3. Administrative Reports

- Planted Area : MOA
- Harvested Area : MOA
- Agricultural Input : MOA
- Livestock Population : MOA
- Forestry Production : MF
- Price : MOA, MOT
- Export – Import : CUSTOM

International Classification Adopted

- **ISIC (International Standard Industrial Classification)**
- **CPS (Central Product Classification)**
- **HS (Harmonized System Classification)**

An aerial photograph of a lush green valley featuring terraced rice fields. The fields are arranged in curved, stepped patterns that follow the contours of the land. In the background, there are rolling hills and mountains covered in dense green forest. The sky is bright, and the overall scene is vibrant and scenic.

RESOURCES OF THE AGRICULTURAL STATISTICS SYSTEM

A. Human Resources

- **Central Office (\pm 250 People: including NSO, MoA, MMF, MoF)**
- **Provincial Office (\pm 400 People): 34 provs**
- **District Office (\pm 6000 People): 520 districts**
- **Sub-District Official (\pm 26.400 People): 6600 SDs**

B. Financial Resources

- In NSO, Budget for Statistics was prepared centralized
- In Ministries and local offices, each institutional unit has their own budget. Ministries prepared the financial guide line.

C. Physical Resources

- Computer/Laptop is provided for each Statistics Officer at Central, Province
- GPSs are also provided for each district

An aerial photograph of a lush green valley featuring terraced rice fields. The fields are arranged in a series of curved, stepped patterns that follow the contours of the land. The water in the terraces reflects the sky, creating a shimmering effect. In the background, there are rolling hills and mountains covered in dense green forest. The overall scene is peaceful and scenic, representing a typical agricultural landscape in a mountainous region.

DISSEMINATION OF AGRICULTURAL STATISTICS

Agricultural Statistical Publication



NSO Agriculture Statistics Publications

Name	Frequency
• Land Area by Utilization	yearly
• Agriculture Indicators	yearly
• Production of Food Crops	yearly
• Statistics of Annual Fruits and Vegetables Plants	yearly
• Statistics of Seasonal Fruits and Vegetables Plants	yearly
• Statistics of Ornamental Plants	yearly
• Statistics of Medical Plants	yearly
• Statistics of Horticulture Establishment	yearly

NSO Agriculture Statistics Publications

Name	Frequency
• Indonesian Oil Palm Statistics	yearly
• Indonesian Rubber Statistics	yearly
• Indonesian Tea Statistics	yearly
• Indonesian Sugar Cane Statistics	yearly
• Directory of Oil Palm Plantation Establishment	yearly
• Directory of Rubber Plantation Establishment	yearly

MOA Statistics Publications

A. Methodologies for crops data collection:

- Methodology for Foodcrops data collection
- Methodology for Horticulture data collection
- Methodology for Estate crops data collection
- Methodology for Livestocks data collection

B. Methodology for non crop data collection:

- Methodology for farmer welfare survey
- Methodology for stock and consumption survey
- Methodology for paddy field mapping by GPS
- Methodology for Paddy field Mapping by using satellite imagery



C. Statistical Publications and database for agricultural commodities (Foodcrops, Horticulture, Estate Crops, and Livestock)

- Agricultural Statistics, yearly
- Foodcrops commodities Outlook, yearly
- Horticulture commodities Outlook, yearly
- Estate crops commodities Outlook, yearly
- Livestock commodities Outlook, yearly



D. Statistical Publications and databases for agricultural infrastructure and social-economics

- Agricultural macro-economic Indicators, yearly
- Bulletin of agricultural Gross Domestic Product(quarterly)
- Bulletin of agric. export/import (monthly)
- Bulletin of agric. commodities price (monthly)
- Bulletin of internasional price (semesterly)
- Agricultural macro-economic indicators Pocket Book (Quarterly)
- Analysis of agricultural trade performance
- Analisis Farmers Welfare
- Paddy Field Base Map (Java)



PUBLICATION OF MARINE FISHERIES STATISTICS

DETAILS	THE TYPE OF DATA COLLECTED	DATA COLLECTION
ECONOMY UNITS	Households or establishments capture fisheries according to the size of the business categories	Annual
INPUT	<ul style="list-style-type: none"> • Fishing vessels by type and size • Fishing units by type of equipment and vessel size • Fishing trips by type of equipment and vessel size 	<ul style="list-style-type: none"> • Annual • Annual • Quarterly
OUTPUT	<ul style="list-style-type: none"> • Production by type of fishing gear and fish species • Production values by type of fishing gear and fish species • <u>Production by type of fishing gear of fish seed and fish species</u> • <u>Value of fish seed production by type of equipment catching fish fry fish</u> 	Quarterly

PUBLICATION OF AQUACULTURE STATISTICS

DETAILS	THE TYPE OF DATA COLLECTED	DATA COLLECTION
ECONOMY UNITS	Households or establishments aquaculture use form SB-2a (broodstock) and form SB-H1 (ornamental fish data) → area of aquaculture (wide effort)	Annual
INPUT	<ul style="list-style-type: none"> • Means of production • Production • Value of production 	Quarterly
OUTPUT	<ul style="list-style-type: none"> • Estimation production by type of aquaculture • Values of production by type of aquaculture • Estimation production by fish species • Value of production by fish species 	Quarterly

Data Dissemination through Website

- ▣ BPS-Statistics Indonesia Website : www.bps.go.id
- ▣ Ministry of Agriculture's Web Site : www.pertanian.go.id
- ▣ Ministry of Marine Affairs and Fisheries: www.kkp.go.id
- ▣ Ministry of Forestry : www.dephut.go.id

Sosial dan Kependudukan

Gender

Indeks Pembangunan Manusia

Kemiskinan

Kependudukan

Kesehatan

Konsumsi dan Pengeluaran

Pemerintahan

Pendidikan

Perumahan

Politik dan Keamanan

Sosial Budaya

Tenaga Kerja

Ekonomi dan Perdagangan

Pertanian dan Pertambangan

Informasi Publik

< **Ekonomi Indonesia 2013 tumbuh 5,78%** >

Berita Resmi Statistik

03 Maret 2014

- ▶ Februari 2014, Harga Grosir Naik 0,48 Persen dibandingkan Bulan Sebelumnya (Hits : 4447)
- ▶ Produksi Padi Tahun 2013 (Angka Sementara) Naik 3,24 Persen (Hits : 4435)
- ▶ NTP Februari 2014 Turun 0,16 Persen Dibandingkan NTP Bulan Sebelumnya (Hits : 4133)
- ▶ Januari 2014, Jumlah Wisman Naik 22,59 Persen Dibanding Tahun Sebelumnya (Hits : 4321)
- ▶ Januari 2014, Ekspor Indonesia Turun 14,63 Persen dan Impor Turun 3,50 Persen (Hits : 4570)
- ▶ Inflasi Februari 2014 Sebesar 0,26 Persen (Hits : 4498)

05 Februari 2014

- ▶ Kondisi Bisnis dan Ekonomi Konsumen Triwulan IV/2013 Meningkat dari Triwulan Sebelumnya (Hits : 4243)
- ▶ Pertumbuhan PDB 2013 Mencapai 5,78 Persen (Hits : 5346)

03 Februari 2014

- ▶ Januari 2014, Harga Grosir Naik 1,81 Persen dibandingkan Bulan Sebelumnya (Hits : 4283)

Website BPS Provinsi

BPS Provinsi ▾

Publikasi BPS



ASEAN Community Progress Monitoring System 2012



Sistem Neraca Nasional 2008



- Laporan Bulanan Data Sosial Ekonomi Maret 2014
- Edisi Sebelumnya
- Booklet Sosial-Ekonomi



Statistik Indonesia 2013

[Selengkapnya](#)



- Home
- Profil
- Program
- Peta Situs
- Intranet
- Kontak

Kementerian Pertanian
ePlanning

SAKIP
Kementerian Pertanian

Pengarusutamaan Gender (PUG)
<http://www.deptan.go.id/pug>

Portal Multimedia Pertanian
<http://multimedia.deptan.go.id>

Kelembagaan Institution

Sekretariat

Inspektorat

Tanaman Pangan

Hortikultura

Peternakan & Kesehatan Hewan

Perkebunan

Penelitian & Pengembangan

Ketahanan Pangan

Prasarana & Sarana

Update » IOMOR : 151/Kpts/KP.330/1/2014 Tentang PEMBERHENTIAN

Berita Utama / Headline News

Sekretariat Jenderal | 21-Mar-2014
Mentan: Hadapi AEC 2015, Pemerintah Dorong Perkuat Daya Saing



Jakarta – Dalam menghadapi ASEAN Economic Community (AEC) 2015, sektor pertanian didorong untuk memperkuat perdagangan intra dan ekstra ASEAN dan daya saing produk. "AEC merupakan tantangan sekaligus peluang" ujar Menteri Pertanian, Suswono dalam sambutannya dalam acara "Gelar Penerapan Teknologi Pengolahan Hasil Pertanian" (19/03/2014).

Berita Utama Lainnya / More Headline

- Mentan: Waspada Sepak Terjang Pihak Tertentu yang menimbulkan Dampak Hukum (20-Mar-2014)
- Wamentan: (20-Mar-2014)

Kalender Tanam TERPADU
AGRO INOVASI
<http://lpse.deptan.go.id>

LPSE
Kementerian Pertanian

Portal Ekspor Impor

PRIOR NOTICE

e-sipmen
Kementerian Pertanian

Layanan Perijinan Terintegrasi

SMS Center
Kementerian Pertanian
0813 8 303 4444

Cari Data Search



INFO AKTUAL

KKP-KPK SEPAKATI CEGAH GRATIFIKASI

2014/03/27 - Kategori : Siaran Pers

SIARAN PERSNo. 36/PDSI/HM.310/III/2014KKP-KPK SEPAKATI CEGAH GRATIFIKASI Komitmen Kementerian Kelautan dan Perikanan (KKP) untuk mewujudkan...

REALISASI KUR PERIKANAN DIATAS RP 800 MILIAR »

Pemantauan Ekosistem Terumbu Karang Stasiun PSDKP Tual »

SI MUTIARA HIJAU DARI KABUPATEN POLEWALI MANDAR DAPAT MENINGKATKAN TAR... »

+ index

FOTO KEGIATAN KKP



GALERI FOTO

1	2	3
4	5	6
7	8	9

MKP, Sharif C. Sutardjo (kanan) dan Ketua KPK, Abraham Samad (kiri) tandatangani Pernyataan Komitmen Penerapan Pengendalian Gratifikasi di Ballroom GMB III-KKP, Kamis (27/3).

LPSE-KKP
Lembaga Pengadaan Secara Elektronik
Kementerian Kelautan dan Perikanan

a Jl. Jenderal Sudirman Kav. 86 Jakarta Pusat. : Saksikan !! tayangan Parodi Beranda "Anti Korupsi" Kementerian Kelautan dan Perikanan di MetroTV pada Hari Jumat, 20 D

BERITA

SIARAN PERS

INFO MEDIA

KILAS STATISTIK KKP

PROFIL & INSTANSI KKP

Link Utama

Link Lainnya

CLOSE





Peraturan Perundangan

Organisasi Kelembagaan

Publikasi Kehutanan

Kehutanan Propinsi

Umum



Berita



Lelang



Situs Terkait



Email Pejabat



Buku Tamu



Kontak Kami



Site Map



Forum



Gallery



Kalendar Event



[\(INTERNATIONAL DAY OF FORESTS\) 2014](#)

Menu :

- [Home](#)
- [Profil Kemenhut](#)
- [Sekertariat Jenderal](#)
- [Inspektorat Jenderal](#)
- [Bina Usaha Kehutanan](#)
- [Pengelolaan DAS dan PS](#)
- [PHKA](#)
- [Planologi Kehutanan](#)
- [Penelitian dan Pengembangan](#)
- [Penyuluhan dan Pengembangan SDM](#)

Search :

Kalender Hotspot :

[<<Prev](#) [March 2014](#) [Next>>](#)

Info Terkini

21-03-2014

Pelatihan Tenaga Lapangan (Penyelia Operasional) Badan Layanan Umum Pusat Pembiayaan Pembangunan Hutan

Surat Ketua Panitia Penerimaan Tenaga Lapangan (Penyelia Operasional) BLU Pusat P2H Tahun 2014 no. S.410/P2H-1/2014 tanggal 20 Maret 2014 perihal Pelatihan Tenaga Lapangan (Penyelia Operasional)Badan Layanan Umum Pusat Pembiayaan Pembangunan Hutan.

20-03-2014

Realisasi pelepasan kawasan hutan dan Rekapitulasi persetujuan prinsip pencadangan kawasan hutan Februari 2014

Data Realisasi pelepasan kawasan hutan dan Rekapitulasi persetujuan prinsip pencadangan kawasan hutan Februari 2014.

19-03-2014

TIGA DESA DI KABUPATEN KAPUAS MENERIMA IZIN PENETAPAN AREAL KERJA HUTAN DESA

Menteri Kehutanan Zulkifli Hasan telah menandatangani dan menyerahkan Surat Keputusan (SK)Penetapan Areal Kerja Hutan Desa untuk tiga desa di Kabupaten Kapuas Prov. Kalimantan Tengah dalam acara Pekan Raya Perhutanan Sosial yang berlangsung di Lampung Jumat, 7 Maret 2014 lalu. Berdasarkan hasil verifikasi Kementerian Kehutanan yang dilakukan pada bulan November 2012, luas areal kerja hutan desa yang diberikan dan ditetapkan dalam SK Menteri tersebut masing-masing adalah desa Petak Puti +7.855 ha, Katimpun +3.230 ha, dan Tambak Bajai +9.580 ha.

Email Login :



DATA PERIJINAN



Thank You

TERIMA KASIH

