



Food and Agriculture
Organization of the
United Nations



SPC
Secretariat
of the Pacific
Community



STRATEGIC PLANNING FOR AGRICULTURE & FISHERIES STATISTICS IN THE PACIFIC WORKSHOP

Fisheries data collection in the Pacific

Michael Sharp
Economic Adviser (Household Surveys)
Statistics for Development Program
Secretariat of the Pacific Community

Fisheries in the Pacific

FADs: Fish aggregating devices

INDUSTRIAL FISHERIES

- Low participation
- Few species
- Limited gear
- Single purpose / multi market
- Geographically dispersed

INDUSTRIAL

ARTISANAL FISHERIES

- Moderate participation
- Moderate species
- Moderate gear
- Multi purpose / market
- Geographically dispersed

INSHORE FISHERIES

- High participation
- Multi species
- Multi gear
- Multi purpose / market
- Geographically dispersed

2000–2500 m

800–1500 m

100–800 m

industrial
anchored
FAD

FAD

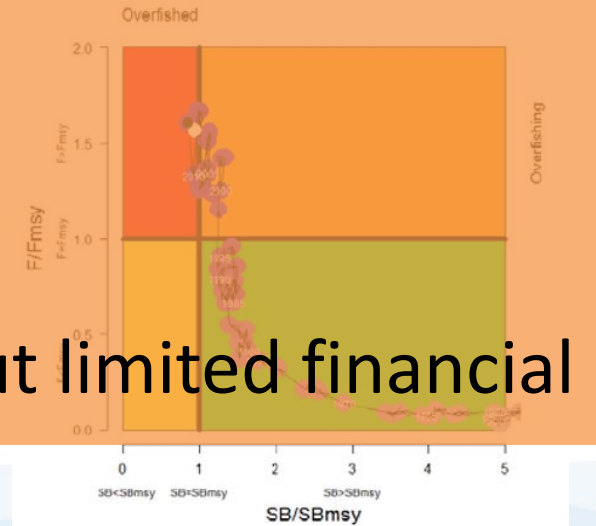
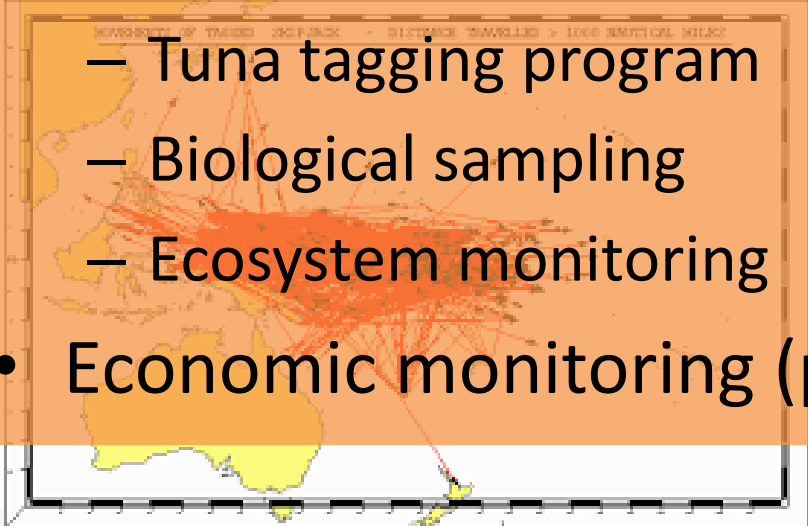
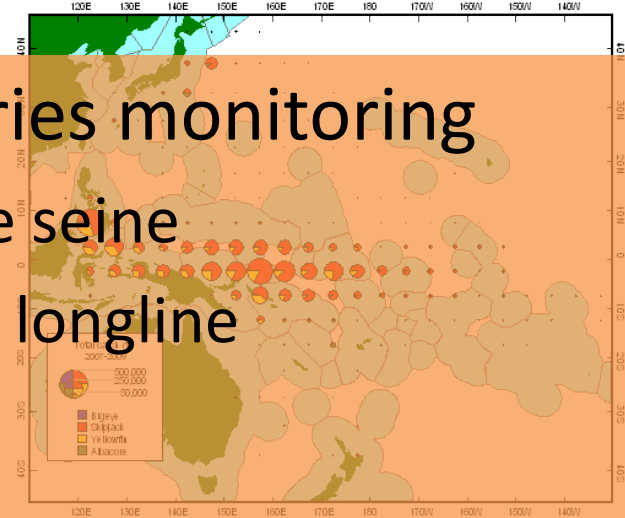
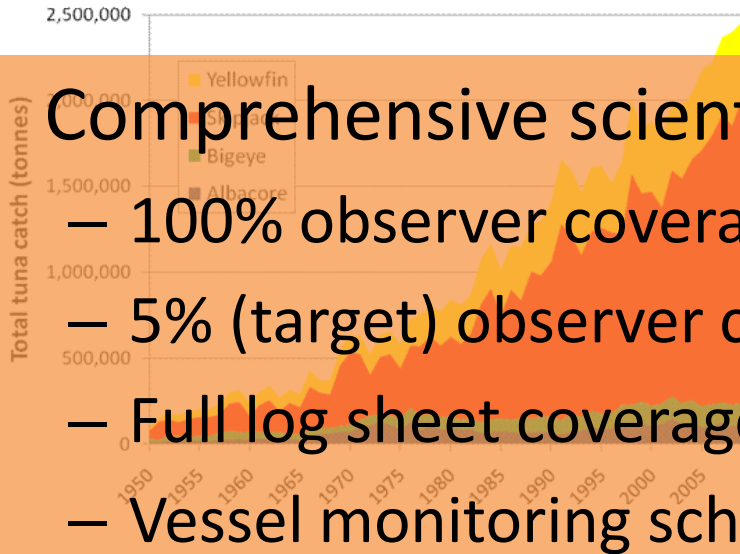
nearshore
subsurface
FAD

lagoon FAD

inshore
surface FAD

Industrial fisheries monitoring

- Comprehensive scientific fisheries monitoring
 - 100% observer coverage of purse seine
 - 5% (target) observer coverage of longline
 - Full log sheet coverage
 - Vessel monitoring scheme
 - Tuna tagging program
 - Biological sampling
 - Ecosystem monitoring
- Economic monitoring (price), but limited financial



Artisanal (tuna) fisheries monitoring

- 
- Artisanal tuna fisheries monitoring program
 - Biological and economic orientation
 - Ongoing monitoring in some countries, however not without challenges (coverage)
 - Log sheet, length frequency, activity counts
 - Other project based monitoring, such as:
 - Fish aggregating device (FAD) monitoring
 - Small pelagic fisheries
 - Sports fishing based tourism

Inshore fisheries monitoring

- Ad hoc with low coverage
- Biological and ecological orientation
- Difficulty with extrapolation
- Examples include:
 - Underwater visual census
 - Creel and market survey
 - Export monitoring – conflicting data
 - Aquaculture

Opportunities

- Time series updates through use of the socioeconomic fisheries survey (small area estimation)
- Use of market survey data to facilitate production estimates from HIES (bundles and strings), and CPI updates
- Sharing of official and fisheries trade data
- Use of census and HIES to complement fisheries catch and effort data (e.g., to facilitate extrapolation, CBEAFM)
- Use of census and HIES to inform social and economic dimensions of fisheries

