

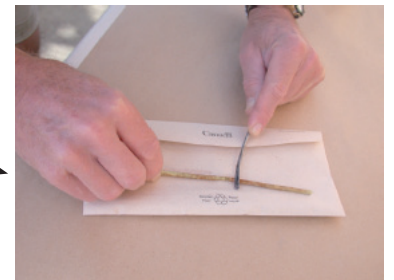
Generalized Protocol for Race Analysis - Seedling Assays



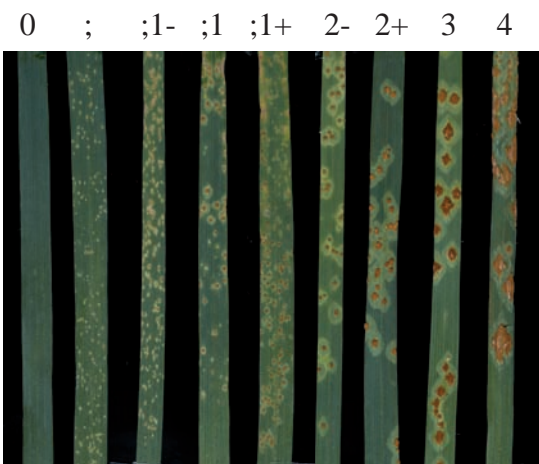
A. Field Infection



B. Sample Collection



C. Innoculation - susceptible host for pathogen multiplication



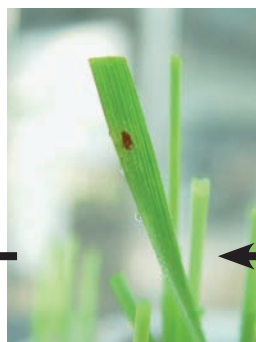
-----Resistant----- Susceptible
H. Scoring of infection types on differentials, using 0-4 evaluation scale



D. Infection - Dew treatment; 12-16 hours in dark at 21 C, then 3 hours in light. Incubation, 13-14 days at 18-25 C



G. Innoculation of differential set using single pustule isolate



F. Isolation of single pustule. Subculture on susceptible, then apply to differential set



E. Disease development on susceptible

Photo credits: Z.A. Pretorius (A,D,E,F,G),
R.F. Park (B,C,H)