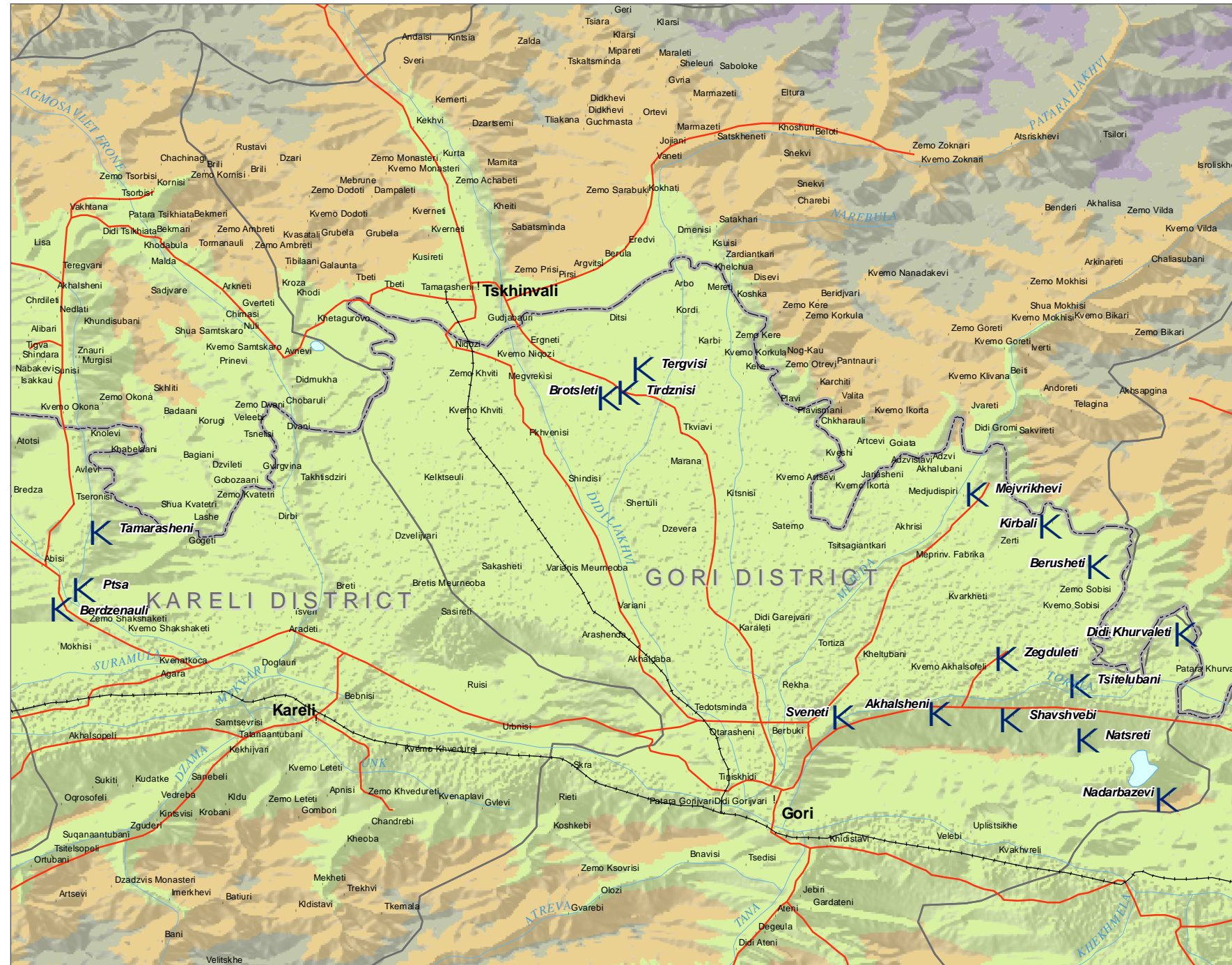
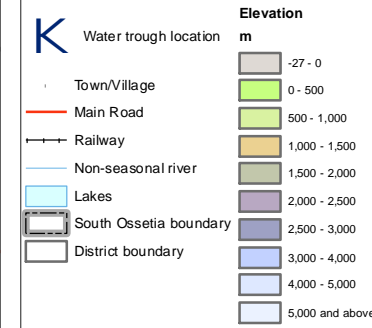


GEORGIA: Newly installed cattle water troughs in Shida Kartli region



Legend

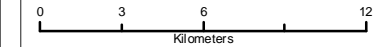


"Emergency supply of animal feed to conflict affected small-scale farming households and support to the Agriculture Sector and Food Security Cluster coordination in Georgia" (OSRO/GEO/802/USA)

The project funded by the United States Agency for International Development (USAID) and implemented by FAO aims to protect livelihoods of vulnerable livestock holders in conflict-affected area and provides technical assistance and coordination support to ensure that the affected population accrues greater benefits from all related rural households food security intervention.

127 conflict affected villages
18 244 beneficiaries
4 240 MT of concentrated animal feed distributed
46 905 cattle treated for endoparasites
35 water troughs installed in 17 villages

Map Name: FAO_georgia_shida kartli_water troughs_v1_200709
Creation Date: 29 Jul 2009
Projection/Datum: WGS84
Web Resources: http://www.fao.org/emergencies/country_information/list/europe/georgia/en/
Nominal Scale at A4 paper size: 1:278,284



Map data source(s):
 FAO Georgia

Disclaimers:
 The designations employed and the presentation of material on this map do not imply the expression of any opinion whatsoever on the part of the Secretariat of the United Nations concerning the legal status of any country, territory, city or area or of its authorities, or concerning the delimitation of its frontiers or boundaries.