

DIMETHOMORPH (225)

First draft was prepared by Dr Anita Stromberg, National Food Agency, Uppsala, Sweden

EXPLANATION

Dimethomorph, a cinnamic acid derivative, is a member of the morpholine group of fungicides and consists of a mixture of the E and Z isomers in approximately equal proportions. Its mode of action is through the disruption of fungal cell wall formation. When applied as a foliar spray dimethomorph penetrates the leaf surface and is translocated within the leaf to provide protectant action against plant pathogens belonging to class Oomycetes order Peronosporales. The fungicide is selective for downy mildews and members of the genus *Phytophthora*. Dimethomorph was evaluated for the first time by the JMPR in 2007. The 2007 meeting established an acceptable daily intake (ADI) of 0–0.2 mg/kg bw and an acute reference dose (ARfD) of 0.6 mg/kg bw. The residue (for compliance with the MRL and for estimation of dietary intake) for plant and animal commodities was defined as dimethomorph (sum of isomers). Maximum residues levels for 20 commodities were proposed by JMPR 2007.

Dimethomorph was listed by the Forty-fifth Session of the CCPR (2013) for evaluation of additional MRLs. The 2014 Meeting received GAP information and residue trial data from uses as foliar spray, soil drench or drip irrigation in oranges, strawberries, grapes, papaya, bulb onions, leek, spring onions, head cabbage, broccoli, pepper, lettuce leaf, spinach, lettuce head, taro, green peas, vining peas, lima beans, artichoke, and celery. An analytical method for animal matrices was provided as well as validation data for an analytical method in oranges. Processing studies in oranges, strawberry, onion, lettuce head and peas were also provided.

ANALYTICAL METHODS

The Meeting received a summary of validation data for the method Agriquem PE-804 which was developed for determination of dimethomorph residues in citrus fruits (doc. code 2010/1089351). The method (extraction method and extraction efficiency) was already reviewed by the JMPR in 2007. The method validation data for citrus was carried out concurrently with the analysis of the residue trials and not carried out as a separate project. The recoveries obtained as part of method validation for the parent dimethomorph (sum of isomers) in citrus fruit are presented in Table 1.

Table 1 Recovery data for the method Agriquem PE-804 for dimethomorph in citrus

| Matrix | reported LOQ mg/kg | spike level | n | % recovery | | RSD | Trial references |
|--------------------|-----------------------|-------------|---|------------|--------------|------|------------------------------|
| | | | | mean | range | | |
| Orange pulp | 0.01 | 0.025 | 8 | 101.0 | 96–108 | 5.9 | 2006/1015077 |
| | | 0.05 | 8 | 110.8 | 92–110 | 6.5 | 2005/1034175 2006/1015076 |
| | | 0.1 | 8 | 81.6 | 73–88 | 6.0 | 2006/1015076 |
| | | 0.2 | 4 | 97.3 | 94–104 | 4.9 | 2005/1034175 |
| Orange whole fruit | 0.01 | 0.05 | 8 | 88.5 | 78–106 | 9.9 | 2006/1015076 2006/1015076 |
| | | 0.075 | 4 | 91.0 | 84–106.67 | 15.8 | 2005/1034175 |
| | | 0.1 | 4 | 95.5 | 88–106.0 | 9.4 | 2006/1015076 |
| | | 0.15 | 8 | 88.4 | 81.33–109.33 | 10.9 | 2006/1015076 |
| | | 0.3 | 4 | 81.3 | 81.0–81.67 | 0.4 | 2005/1034175 |
| Orange peel | 0.01 | 0.075 | 6 | 87.1 | 72–104 | 14.4 | 2006/1015076 |
| | | 0.1 | 4 | 91.0 | 87.0–95.0 | 4.5 | 2005/1034175 |
| | | 0.15 | 6 | 75.3 | 71.33–78.67 | 3.9 | 2006/1015076 |
| | | 0.2 | 4 | 100.4 | 92.0–106.5 | 6.1 | 2006/1015076 |
| | | 0.25 | 4 | 87.0 | 77.2–79.2 | 12.2 | 2006/1015077 |
| | | 0.4 | 4 | 86.7 | 73.0–93.25 | 10.7 | 2005/1034175 |

The recovery in all the matrices and fortification levels was in the acceptable range 70–110%. The relative standard deviation for all matrices was within the adequate level below 20%.

A new analytical method for animal matrices was submitted to the 2014 Meeting. In this method dimethomorph is extracted with methanol/water/hydrochloric acid. The extract is partitioned against cyclohexane at alkaline conditions and then evaporated to dryness and dissolved in a methanol/water mixture. The final determination of dimethomorph is performed by HPLC-MS/MS at two transitions. Transition m/z 388 → 301 is proposed as target transition for quantification and transition m/z 388 → 165 for confirmatory purposes. The limit of quantification is 0.01 mg/kg for dimethomorph in milk, egg, muscle and liver.

Table 2 Recovery result of dimethomorph residues using method LO138/01 in different animal tissues

| Sample Matrix | Dimethomorph | Fortification level | Average recovery% | RSD% | No of analysis |
|---------------|-----------------------------|---------------------|-------------------|------|----------------|
| Egg | Dimethomorph m/z 388-301 | 0.01 | 100.4 | 1.9 | 5 |
| | | 0.1 | 100.9 | 2.3 | 5 |
| | Dimethomorph m/z 388-165 | 0.01 | 97.8 | 1.9 | 5 |
| | | 0.1 | 100.9 | 1.6 | 5 |
| Fat | Dimethomorph m/z 388-301 | 0.01 | 95.1 | 0.9 | 5 |
| | | 0.1 | 105.2 | 2.5 | 5 |
| | Dimethomorph m/z 388-165 | 0.01 | 96.7 | 2.6 | 5 |
| | | 0.1 | 104.8 | 1.8 | 5 |
| Kidney | Dimethomorph m/z 388-301 | 0.01 | 99.5 | 3.9 | 5 |
| | | 0.1 | 98.1 | 2.6 | 5 |
| | Dimethomorph m/z 388-165 | 0.01 | 97.6 | 4.0 | 5 |
| | | 0.1 | 99.1 | 3.8 | 5 |
| Liver | Dimethomorph m/z 388-301 | 0.01 | 97.2 | 4.8 | 5 |
| | | 0.1 | 98.8 | 2.9 | 5 |
| | Dimethomorph m/z 388-165 | 0.01 | 98.0 | 2.4 | 5 |
| | | 0.1 | 98.7 | 3.1 | 5 |
| Milk | Dimethomorph m/z 388-301 | 0.01 | 103.8 | 2.9 | 5 |
| | | 0.1 | 101.4 | 4.9 | 5 |
| | Dimethomorph m/z 388-165 | 0.01 | 105.4 | 3.3 | 5 |
| | | 0.1 | 103.4 | 4.5 | 5 |
| Muscle | Dimethomorph m/z 388-301 | 0.01 | 101.6 | 3.4 | 5 |
| | | 0.1 | 96.8 | 5.2 | 5 |
| | Dimethomorph m/z 388-165 | 0.01 | 103.4 | 3.0 | 5 |
| | | 0.1 | 98.5 | 5.4 | 5 |

The method was independently validated with recoveries in milk, egg, muscle and liver in the range of 70–110% and a RSD of $\leq 20\%$.

USE PATTERN

Dimethomorph is a morpholine fungicide with protective action against plant pathogenic *Phytophthora* species and a number of downy mildew diseases on fruit, vegetables and potato.

The fungicide is registered in around 100 countries worldwide. Information on registered uses together with labels for dimethomorph was provided to the Meeting by one manufacturer. The representative uses relating to the crops under consideration for additional MRLs and revising some of the existing CODEX MRLs are summarized in the following tables.

Table 3 Selected representative uses of dimethomorph on berries and other small fruit as well as fruit and assorted and sub-tropical fruits crops and bulb vegetables (from labels provided)

| Crop | Country | Form* | Application per treatment | | | Interval (days) | PHI (days) | Notes |
|--|--|----------|---------------------------|--|--------------------------|-------------------|------------|--------------------------------|
| | | | Max no | Conc kg ai/hL | Rate kg ai/ha | | | |
| Grapes | US (not registered for use in California) | SC 43.5% | 4 | 0.03–0.05 (concentrated) 0.006–0.02 diluted 0.12 per ground application 0.47 per aerial application | 0.219 ^a | 7 ⁱ | 14 | Spray |
| Grapes | US | SC 20.2% | 2 | 0.12 per ground application 0.48 per aerial application | 0.16–0.206 ^b | 7–10 ^j | 14 | Spray |
| Strawberries (outdoor and protected) | Belgium | WP 50% | 3 | 0.02–0.05 | 0.05 g ai/plant | 1 | | Root drench |
| Strawberries (outdoor and protected) | Belgium | WP 50% | 1 | 0.025–0.05 | | ^m | 35 | Drip irrigation |
| Strawberries (protected) | Ireland | WP 50% | 1 | 0.003–0.05 | 0.05 g ai/plant at least | ^m | 35 | Drip irrigation or root drench |
| Strawberries (outdoor) | Ireland | WP 50% | 1 | 0.15–0.25 | 1.5 | ^m | 35 | Spray |
| Strawberries (protected) | The Netherlands | WP 50% | 1 | 0.05 | 0.05 g ai/plant | ^m | 35 | Drip irrigation |
| Strawberries (outdoor) | The Netherlands | WP 50% | 1 | 0.375–0.75 | 1.5 | ^p | 35 | Spray |
| Strawberries | Taiwan | WG 18.7% | 2 | 0.006 | 0.072–0.096 | 7 ⁿ | 5 | Spray |
| Strawberries | Taiwan | WP 50% | 2 | 0.004–0.01 | 0.15–0.2 | 7 ⁿ | 6 | Spray |
| Strawberries (outdoor) | UK | WP 50% | 1 | 0.15–0.25 | 1.5 | ^m | 35 | Spray |
| Strawberries (protected) | UK | WP 50% | 1 | 0.025–0.05 | 0.05 g ai/plant | ^m | 35 | Drip irrigation or root drench |
| Bulb vegetables Garlic, Garlic great headed, Leek, Onion dry bulb, Onion green, Onion Welsh Shallot | Canada | SC 22.5 | 3 ^g | 0.12 per ground application 0.49 per aerial application | 0.225 ^c | 5–7 ^k | 0 | Spray |
| Bulb vegetables Garlic, Garlic great headed, Leek, Onion dry bulb, | USA | SC 43.5% | 3 | 0.12 per ground application 0.47 per aerial application | 0.19 ^d | 5 ^k | 0 | Spray |

| Crop | Country | Form* | Application per treatment | | | Interval (days) | PHI (days) | Notes |
|--|-----------|------------|---------------------------|--|--------------------|-------------------|------------|-------|
| | | | Max no | Conc kg ai/hL | Rate kg ai/ha | | | |
| Onion green, Onion Welsh Shallot | | | | | | | | |
| Bulb vegetables Garlic, Garlic great headed, Leek, Onion dry bulb, Onion green, Onion Welsh Shallot | USA | SC 20.2% | 3 ^g | 0.12 per ground application 0.49 per aerial application | 0.206 ^e | 5–7 ^k | 0 | Spray |
| Leek | Austria | WG 90 g/kg | 3 | 0.03–0.045 | 0.18 | 7–14 | 21 | Spray |
| Leek | France | DG 9% | 2 | 0.023–0.036 | 0.18 | 7–10 ^q | 14 | Spray |
| Leek | Germany | WG 90 g/kg | 3 | 0.03–0.045 | 0.18 | 7–14 | 21 | Spray |
| Leek | Mexico | SC 8% | 3 | 0.029–0.83 | 0.20–0.25 | 7–14 | 7 | Spray |
| Leek | Norway | WG 90 g/kg | 4 | 0.045–0.06 | 0.18 | 7–14 | 14 | Spray |
| Leek | UK | DG 7.5% | 3 | 0.03–0.075 | 0.15 | 7–14 ^k | 21 | Spray |
| Spring onions (Green onions) | Belgium | WG 7.5% | 4 | 0.038–0.09 | 0.188 | 7–10 | 14 | Spray |
| Spring onions (Green onions) | Hungary | WG 9% | 4 | 0.03–0.09 | 0.180 | 7 ^o | 14 | Spray |
| Spring onions | Luxemburg | WG 7.5% | 4 | 0.038–0.09 | 0.188 | 7–10 | 14 | Spray |

^a Maximum rate per season is 0.95 kg ai/ha

^b Maximum rate per season is 0.826 kg ai/ha

^c Maximum rate per season is 1.12 kg ai/ha

^d Maximum rate per season is 0.953 kg ai/ha

^e Maximum rate of 0.619 kg ai/ha

^f Maximum rate of 0.44 kg ai/ha

^g Do not make more than two sequential applications before alternating to a labelled fungicide with different mode of action fungicide

^h Apply at transplanting

ⁱ Apply after transplanting

^j From transplanting until growth resumption in spring

^k Apply prior to disease development

^l Apply at transplanting, one month later and at growth resumption in spring

^m Apply direct after planting

ⁿ Apply at beginning of infection

^o Last treatment at skin development

^p Apply direct after planting in propagation fields, waiting beds and production fields

^q Carry out two applications during the winter protection period at a rate of a minimum of 14 days, of a maximum of 21 days

Table 4 Representative uses of dimethomorph on brassica vegetables (from labels provided)

| Crop | Country | Form* | Application per treatment | | | Interval (days) | PHI (days) | Notes |
|---|---------|-----------|---------------------------|--|--------------------|-------------------|------------|-------|
| | | | Max no | Conc kg ai/hL | Rate kg ai/ha | | | |
| Head cabbage | Belgium | WP 50 g/L | 1–2 | | 1.5 | 7–10 ^f | na | Spray |
| Head cabbage | USA | SC 20.2% | 3 ^a | 0.12 per ground application 0.49 per aerial application | 0.206 ^b | 7 ^g | 0 | Spray |
| Head cabbage | USA | SC 43.5% | 3 | 0.12 per ground application 0.47 per aerial application | 0.19 ^c | 7 ^g | 0 | Spray |
| Broccoli | Belgium | WP 50 g/L | 2 | | 1.5 | 7–10 ^h | na | Spray |
| Broccoli | USA | SC 20.2% | 3 ^a | 0.12 per ground application 0.49 per aerial application | 0.206 ^b | 7 ^g | 0 | Spray |
| Broccoli | USA | SC 43.5% | 3 | 0.12 per ground application 0.47 per aerial application | 0.19 ^c | 7 ^g | 0 | Spray |
| Brassica leafy vegetables, (Broccoli and others). | Canada | SC 22.5% | 3 ^e | 0.12 per ground application 0.49 per aerial application | 0.225 | 5–7 ^g | 0 | Spray |

^a Two is maximum number of sequential applications before altering to a labelled fungicide with different mode of action

^b Maximum rate per season is 0.619 kg ai/ha

^c Maximum rate per season is 0.953 kg ai/ha

^d Maximum rate per season is 1.169 kg ai/ha

^e Do not make more than 2 sequential applications before alternating to a labelled fungicide with different mode of action fungicide

na = Not applicable

^f Treatment before planting

^g Apply prior to disease development

^h Treatment before planting

Table 5 Selected representative uses of dimethomorph on fruiting vegetables other than cucurbits

| Crop | Country | Form* | Application per treatment | | | Interval (days) | PHI (days) | Notes |
|--|---------|------------|---------------------------|---|---------------|-------------------|------------|-------|
| | | | Max no | Conc kg ai/hL | Rate kg ai/ha | | | |
| Pepper, all varieties | Canada | SC 225 g/L | 3 ^a | use min. 200 L/ha per ground and 50 L/ha per aerial application | 0.225 | 5–7 | 4 | Spray |
| Fruiting vegetable group tomato, eggplant, ground cherry (Physalis spp.) Pepper (all varieties) Pepino | Canada | WP 50% | 5 | use min 200 L/ha per ground and 20 L/ha for aerial applications | 0.225 | 5–10 ^h | 0 | Spray |

| Crop | Country | Form* | Application per treatment | | | Interval (days) | PHI (days) | Notes |
|---|---|------------|---------------------------|--|--------------------|------------------|------------|-------|
| | | | Max no | Conc kg ai/hL | Rate kg ai/ha | | | |
| Tomatillo | | | | | | | | |
| Pepper | Chile | SC 500 g/L | 3 | 0.036 | 0.18 | 10–14 | 7 | Spray |
| Fruiting vegetables group Eggplant Ground cheery Pepino (all varieties) Tomatillo Tomato | USA | SC 20.2% | 2 ^g | 0.12 per ground application 0.49 per aerial application | 0.206 ^b | 5–7 ¹ | 4 | Spray |
| Fruiting vegetables (except tomatoes) Eggplant Ground cherry Pepper (all varieties) Tomatillo | USA Not registered for use in California | SC 43.5% | 2 ^{a–5} | 0.12 per ground application 0.47 per aerial application | 0.19 ^c | 5 ^h | 0 | Spray |
| Pepper | Vietnam | WP 90 g/kg | | 0.0036–0.0045/16 L water | | 7–14 | 7 | Spray |
| Tomato Non-stalked | USA | SC 43.5% | 5 ^f | | 0.19 ^c | 5 ^h | 4 | Spray |
| Tomato stalked | USA | SC 43.5% | 5 ^f | | 0.19 ^c | 5 ^h | 4 | Spray |

^a Two is maximum number of sequential applications before altering to a labelled fungicide with different mode of action.

^b Maximum rate per season is 0.619 kg ai/ha

^c Maximum rate per season is 0.953 kg ai/ha

^d Maximum rate per season is 1.169 kg ai/ha

^e Maximum rate per season is 1.14 kg ai/ha

^f One is maximum number of sequential applications before altering to a labelled fungicide with different mode of action

^g Do not make more than two sequential applications before alternating to a labelled fungicide with different mode of action fungicide

^h Begin applications when plants are 4–6 inches high and prior to onset of disease infection.

ⁱ Apply prior to disease development

Table 6 Selected representative uses of dimethomorph on Leafy vegetables, Legume vegetable, Root and tuber vegetable (from labels provided)

| Crop | Country | Form | Application per treatment | | | Interval (days) | PHI (days) | Notes |
|---------------------------------|----------------|-------------|---------------------------|---------------|---------------|-----------------|------------|-------|
| | | | Max no | Conc kg ai/hL | Rate kg ai/ha | | | |
| Lettuce only head varieties | Austria | WP 500 g/kg | 4 | | 0.36 | 7–10 | 14 | Spray |
| Leafy vegetables | Belgium | WP 500 g/kg | 3 | | 0.36 | 7 | 14 | Spray |
| Leafy vegetables | Canada | SC 225 | 3 | | 0.225 | 5–7 | 0 | Spray |
| Lettuce | Cyprus | EC 72 g/L | 3 | | 0.144–0.18 | 7–8 | 7 | Spray |
| Lettuce, open field exclusively | France | 90 g/kg WG | 3 | | 0.144 | | 28 | Spray |
| Lettuce | Czech Republic | 90 g/kg WG | 3 | | 0.18 | 7–12 | 21 | Spray |

| Crop | Country | Form | Application per treatment | | | Interval (days) | PHI (days) | Notes |
|--|--|------------|---------------------------|--|--------------------|-------------------|------------------------------------|---|
| | | | Max no | Conc kg ai/hL | Rate kg ai/ha | | | |
| Leafy vegetables | Germany | WG 90 g/kg | 3 | | 0.18 | 7–12 | 21 | Spray |
| Leafy vegetables | Greece | SC 22.5% | 2 | | 0.18 | 7–10 | 7 | Spray |
| Leafy vegetables | Italy | SC 22.5% | 2 | 0.018 | 0.18 | 7–10 | 7 | Spray |
| Lettuce | Italy | EC 72 g/L | 3 | 0.014 | 0.144 | 7–10 | 3 | Spray |
| Protected cultivation on lettuce and lambs lettuce | Netherlands | SC 300 g/L | 3 | | 0.24 (0.8 L/ha) | 7–12 | 7 | Spray |
| Protected lettuce | Netherlands | WG 50% | | | 0.15 | 7–12 | 14 | Spray |
| Lettuce | Spain | WG 7.5% | | 0.3–0.35 | max 3 kg/ha | | 7 | Spray |
| Lettuce | Taiwan | WG 50% | 3 | | 0.15–0.2 | 7 | 6 | Spray |
| Leafy vegetable (except Brassica vegetables) | USA | SC 20.2% | 3 ^d | 0.12 per ground application 0.49 per aerial application | 0.206 ^b | 7 | 0 | Spray |
| Leafy vegetable (except Brassica) | USA | SC 43.5% | 3 | 0.12 per ground application 0.47 per aerial application | 0.19 ^c | 7 | 0 | Spray |
| Taro | USA Not for use in California | SC 43.5% | 5 | 0.12 per ground application 0.47 per aerial application | 0.19 ^c | 7 | 7 days (leaves) 30 days (corms) | Spray |
| Peas without pods | Belgium | WG 7.5% | 2 | | 0.15 | BBCH 15–60 | 21 | Spray |
| Canned Peas | France | DG 9% | 2 | | 0.18 | 7–10 ^e | 21 | |
| Green Peas | Germany | WG 90 g/kg | 2 | | 0.18 | 8–14 | 21 | Spray |
| Peas | Hungary | WG 90 g/kg | 1 | | 0.18 | | | Spray |
| Peas without pods | Luxemburg | WG 7.5% | 2 | | 0.15 | BBCH 15–60 | 21 | Spray |
| Peas | Portugal | DG 9% | | 0.2 | 0.18 | 7–10 | | Spray |
| Lima Bean, succulent seed. | USA In CO, MT, NM, WY and states eastward | SC 43.5% | 5 | | 0.19 ^c | 7 ^f | 0 | Spray Application to lima bean must be made to Lima beans intended to harvest as succulent seed only |
| Ginseng | USA Not registered for use in CA. | SC 43.5% | 5 | | 0.19 ^c | 7 | 14 | Spray Aerial application is not permitted |

| Crop | Country | Form | Application per treatment | | | Interval (days) | PHI (days) | Notes |
|--|---------------------|------------|---------------------------|--|--------------------|-----------------|------------|-------|
| | | | Max no | Conc kg ai/hL | Rate kg ai/ha | | | |
| Artichoke | France | EC 72 g/L | 3 | 0.018–0.09 | 0.18 | 14 ^g | 3 | Spray |
| Artichoke | Italy | EC 72g/l | 3 | 0.14–0.09 | 0.14–0.18 | 7–10 | 3 | Spray |
| Celery | Germany | 90 g/kg WG | 2 | 0.018 | 0.18 | 10–14 | | Spray |
| Celery | Trinidad and Tobago | WP 69 | 2–3 | 0.024–0.045 | 0.135–0.18 | 3–4 weeks | 7 | Spray |
| Leafy vegetable (except Brassica) includes celery | USA | SC 43.5% | 3 | 0.12 per ground application 0.47 per aerial application | 0.19 ^c | 7 ^f | 0 | Spray |
| Leafy vegetable (except Brassica vegetables) includes celery | USA | SC 20.2% | 3 ^d | 0.12 per ground application 0.49 per aerial application | 0.206 ^b | 7 ^f | 0 | Spray |

^a Maximum rate per season is 1.169 kg ai/ha

^b Maximum rate per season is 0.9535 kg ai/ha

^c Maximum rate per season is 1.14 kg ai/ha

^d Do not make more than two sequential applications before alternating to a labelled fungicide with different mode of action fungicide

^e Preventive, intervene at the beginning of risk period

^f Preventive application before infection occurs

^g Carry out two applications with COACH PLUS in the risk period which generally begins at the beginning of the strong leaf growth period

Residues resulting from supervised trials on crops

The Meeting received information on supervised field trials involving dimethomorph for the following crops and commodities:

| Group | Crop commodity | Portion of commodity to which MRL apply | Countries | Table No |
|---|------------------------------|---|--|----------|
| FC, Citrus fruits | Orange | Whole fruit, peel and pulp | Spain | 7 |
| | FC 0004, oranges sweet, sour | | | |
| FB, Berries and other Small Fruits | Grapes | Whole fruit | USA | 8 |
| | FB 0269 | | | |
| FB, Berries and other Small Fruits | Strawberry, | Whole fruit | Belgium, Denmark, south and north France, Germany, the Netherlands, Spain and United Kingdom | 9–13 |
| | FB 0275 | | | |
| FI, Assorted Tropical and Subtropical Fruit-inedible peel | Papaya | Whole fruit (peel and pulp) | Brazil | 14 |
| | FI 0350 | | | |

| Group | Crop commodity | Portion of commodity to which MRL apply | Countries | Table No |
|---|---|---|--|----------|
| VA, Bulb Vegetables | Onion, bulb | Bulbs | USA | 15 |
| VA, Bulb Vegetables | VA 0385 Leek | Leek stems | Belgium, Germany, Greece, France (north and south), Italy, the Netherlands, Spain and UK | 16 |
| VA, Bulb Vegetables | VA 0384 Spring onions | Whole plants | USA | 17–18 |
| VB, Brassica Vegetables, Head Cabbage, Flowerhead Brassicas | VA 0389 Head cabbage | Cabbage heads | USA, Canada | 19 |
| VB, Brassica Vegetables, Head Cabbage, Flowerhead Brassicas | VB 0041 | (including wrappers leaves) | | |
| VB, Brassica Vegetables, Head Cabbage, Flowerhead Brassicas | Broccoli | Flower heads and stem | USA, Canada | 20 |
| VO, Fruiting vegetables, other than Cucurbits | VB 0040 Pepper | Fruits | USA | 21 |
| | VO 0051 representing VO 0050 (fruiting vegetables other than cucurbits) | | | |
| VO, Fruiting vegetables, other than Cucurbits | Tomato | Mature fruits | USA | 22* |
| VL, Leafy vegetables including Brassica Leafy vegetables | Lettuce Head | Fresh heads with wrappers leaves | USA | 23–24 |
| | VL 0482 | | | |
| VL, Leafy vegetables including Brassica Leafy vegetables | Lettuce leaf | Leaves | USA | 25 |
| | VL 0483 | | | |
| VL, Leafy vegetables including Brassica Leafy vegetables | Spinach | Leaves | USA | 26 |
| | VL 0502 | | | |
| VL, Leafy vegetables including Brassica Leafy vegetables | Taro leaves | Leaf | USA | 27 |
| | VL 0505 | | | |
| VP, Legume Vegetables | Green Peas | Whole commodity | France (north and south), Germany, Spain and the Netherlands, Denmark, | 28–29 |
| | Peas shelled (succulent | | | |

| Group | Crop commodity | Portion of commodity to which MRL apply | Countries | Table No |
|-------------------------------|---|---|---|----------|
| | seed) | | | |
| | VP 0064 | | | |
| VP, Legume Vegetables | Lima Beans (young pods and/or immature beans) | Whole commodity | USA | 30 |
| | VP 0534 | | | |
| VR, Root and tuber vegetable | Ginseng | Whole commodity after removing tops | USA | 31 |
| | VR 0604 | | | |
| VS, Stalk and stem vegetables | Globe artichoke | Whole commodity | Germany, Italy, France (north and south), the Netherlands and Spain | 32 |
| | VS0620 | | | |
| VS, Stalk and stem vegetables | Celery | Whole commodity | USA and Canada | 33 |
| | VS0624 | | | |
| VR, Root and tuber vegetable | Taro, corms | Whole commodity after removing tops | USA | 34 |
| | VR 0505 | | | |

* Trials were evaluated by JMPR 2007. See Evaluation report for dimethomorph, Table 48

Conditions of the supervised residue trials were generally well reported in detailed field reports. In most trials treated plots were not replicated but where results were reported from replicate plots, these are presented as individual values. Field reports provided data on the sprayers used and their calibration, plot size, residue sample size and sampling date. Although trials included control plots, no control data are recorded in the tables except where residues in control samples exceeded the LOQ. Residue data are recorded unadjusted for % recovery. When residues were not detected they are shown as below the LOQ (e.g. < 0.01 mg/kg). Laboratory reports included methods validation with procedural recoveries from spiking at residue levels similar to those occurring in samples from the supervised trials. Data on duration of residue sample under storage were also provided. Residues and application rates have generally been rounded to two significant figures or, for residues near the LOQ, to one significant figure. Where trials have involved two or more applications, the mean target application rate has been recorded unless the individual rates differ by more than 10%

Residues values from trials conducted according to a maximum registered GAP with supporting trials have been used for the estimation of maximum residue levels. The results included in the evaluation of the MRL, STMR and HR is underlined.

Oranges

Eight outdoor trials performed during growing season 2004–2005 in Spain were presented to the 2007 and 2014 Meeting. Two broadcast spray applications of dimethomorph at 0.41 kg ai/ha were made at 15 day intervals 28 ± 1 and 14 ± 1 days before harvest.

Mature fruit were sampled and both the whole fruit and the pulp were analysed separately by LC-MS/MS, using Method PE 804 approved at this Meeting (see chapter analytical method). The limit of quantification was 0.01 mg/kg for and the mean recovery was 73–104.5.2% at fortification levels of 0.05–0.3 mg/kg for pulp, whole fruit and peel. The results of the residues from dimethomorph are summarized in Table 7.

Table 7 Residues in oranges from foliar application of dimethomorph from field trials in Spain

| ORANGE Country, year (variety) | Form | Application | | | | PHI (days) | Dimethomorph Residues mg/kg | | | Reference & Comments |
|--------------------------------------|---------------|--------------------------|-------------|----|--|---------------|--------------------------------|--------|----------------|---------------------------|
| | | kg ai/ha ^a | kg ai/hL | no | Growth stage at last treatment BBCH | | Pulp | Peel | Whole fruit | |
| Spain 2004 (Valencia Late) | DC 150 g/L | 0.41 | 0.014 | 2 | 85–89 | 0 | | | 0.152 | 2005/1034175 04/S/05 |
| | | | | | | 7 | < 0.01 | 0.219 | 0.066 | |
| | | | | | | 14 | < 0.01 | 0.167 | 0.042 | |
| | | | | | | 21 | < 0.01 | 0.105 | 0.037 | |
| | | | | | 28 | – | – | 0.019 | | |
| Spain 2004 (Valencia Late) | DC 150 g/L | 0.41 | 0.014 | 2 | 85–89 | 0 | | | 0.060 | 2005/1034175 04/S/06 |
| | | | | | | 7 | < 0.01 | 0.130 | 0.059 | |
| | | | | | | 14 | < 0.01 | 0.075 | 0.035 | |
| | | | | | | 21 | – | 0.027 | 0.016 | |
| | | | | | 28 | – | – | < 0.01 | | |
| Spain 2005 (Clemenules) | DC 150 g/L | 0.41 | 0.014 | 2 | 81 | 7 | < 0.01 | 0.138 | 0.091 | 2006/1015076 05/S/41 |
| | | | | | | 14 | < 0.01 | 0.144 | 0.047 | |
| Spain 2005 (Clemenules) | DC 150 g/L | 0.41 | 0.014 | 2 | 81 | 7 | < 0.01 | 0.265 | 0.237 | 2006/1015076 05/S/42 |
| | | | | | | 14 | < 0.01 | 0.199 | 0.144 | |
| Spain 2005 (Salustiana) | DC 150 g/L | 0.41 | 0.014 | 2 | 83 | 0 | | | 0.368 | 2006/1015077 (05/S/01) |
| | | | | | | 7 | < 0.01 | 0.868 | 0.170 | |
| | | | | | | 14 | < 0.01 | 0.548 | 0.227 | |
| | | | | | | 21 | < 0.01 | 0.520 | 0.111 | |
| | | | | | 28 | – | – | 0.084 | | |
| Spain 2005 (Salustiana) | DC 150 g/L | 0.41 | 0.014 | 2 | 83 | 0 | | | 0.607 | 2006/1015077 (05/S/02) |
| | | | | | | 7 | < 0.01 | 1.243 | 0.388 | |
| | | | | | | 14 | < 0.01 | 1.216 | 0.604 | |
| | | | | | | 21 | < 0.01 | 0.644 | 0.330 | |
| | | | | | 28 | | | 0.178 | | |
| Spain 2005 (Lane Late) | DC 150 g/L | 0.41 | 0.014 | 2 | 83 | 0 | | | 0.310 | 2006/1015077 (05/S/03) |
| | | | | | | 7 | < 0.01 | 1.349 | 0.187 | |
| | | | | | | 14 | < 0.01 | 0.931 | 0.173 | |
| | | | | | | 21 | < 0.01 | 0.959 | 0.204 | |
| | | | | | 28 | | | 0.082 | | |
| Spain 2004 (Valencia Late) | DC 150 g/L | 0.41 | 0.014 | 2 | 83 | 0 | | | 0.147 | 2006/1015077 (05/S/04) |
| | | | | | | 7 | < 0.01 | 0.617 | 0.175 | |
| | | | | | | 14 | < 0.01 | 0.440 | 0.069 | |
| | | | | | | 21 | < 0.01 | 0.451 | 0.075 | |
| | | | | | 28 | | | 0.040 | | |

^a Spray volumes of 3000 L/ha

Grapes

During growing season 2008 eight outdoor trials on grapes were conducted in the USA. Dimethomorph was applied four times as a foliar spray using a 6–8 days interval. The applications of the concentrate (0.04–0.06 kg ai/hL) and the dilute (0.009–0.02 kg ai/hL) were made to side by side plots. The timing of the applications was from BBCH 7 (developing of fruits) until BBCH 8 (ripening of fruits).

The samplings of fresh grape fruits were analysed using HPLC-MS/MS Method 575/0. The limit of quantification was 0.01 mg/kg and the mean recovery was 71–115% at fortification levels of 0.01–5.0 mg/kg. The results are summarized in Table 8.

Table 8 Residues in grapes from foliar application of dimethomorph in field trials in the USA

| GRAPES Country, year (variety) | Form | Application | | | | PHI (days) | Dimethomorph Residues mg/kg Fruits | | Reference & Comments |
|--|-------------|-------------|--|----|---|---------------|---|--------|-------------------------|
| | | kg ai/ha | kg ai/hL | no | Growth stage at last treatment | | Conc. | Dilute | |
| Critical GAP USA | | 0.219 | | 4 | | 14 | | | |
| USA (NY) 2008 (Cayuga White) | SC 500 g | 0.225 | 0.05 conc. ^a 0.03 dilute ^b | 4 | BBCH 81 – | 14 | 0.3 | 0.41 | 2009/7002489 R080044 |
| | | | | | | 28 | 0.23 | 0.19 | |
| USA (PA) 2008 (Concord) | SC 500 g | 0.225 | 0.05 conc. ^a 0.009 dilute ^b | 4 | BBCH 85 – | 14 | 0.11 | 0.46 | 2009/7002489 |
| | | | | | | 28 | 0.10 | 0.11 | |
| USA (WI) 2008 (King of the North) | SC 500 g | 0.225 | 0.06 conc. ^a 0.03 dilute ^b | 4 | BBCH 85 – | 14 | 1.77 | 1.28 | 2009/7002489 R080046 |
| | | | | | | 28 | 1.53 | 1.22 | |
| USA (MI) 2008 (Concord) | SC 500 g | 0.225 | 0.05 conc. ^a 0.02 dilute ^b | 4 | Berries touching – | 14 | 0.39 | 0.49 | 2009/7002489 R080047 |
| | | | | | | 28 | 0.48 | 0.34 | |
| CA (ON) 2008 (Concord) | SC 500 g | 0.225 | 0.05 conc. ^a 0.03 dilute ^b | 4 | BBCH 83 – | 14 | 0.05 | 0.11 | 2009/7002489 R080048 |
| | | | | | | 28 | 0.05 | 0.11 | |
| USA (CA) 2008 (Ruby red) | SC 500 g | 0.225 | 0.05 conc. ^a 0.03 dilute ^b | 4 | Berry colour adv. | 14 | 0.26 | 0.15 | 2009/7002489 R080049 |
| | | | | | | 28 | 0.16 | 0.08 | |
| USA (CA) Fresno 2008 (Thompson Seedless) | SC 500 g | 0.225 | 0.04 conc. ^a 0.01 dilute ^b | 4 | Fruits 1.3 cm – | 14 | 0.76 | 1.86 | 2009/7002489 R080050 |
| | | | | | | 28 | 0.53 | 0.90 | |
| USA (CA) Fresno 2008 (Fiesta) | SC 500 g | 0.225 | 0.04 conc. ^a 0.01 dilute ^b | 4 | Fruits 5 cm – | 0 | 2.44 | 1.68 | 2009/7002489 R080051 |
| | | | | | | 7 | 1.43 | 1.88 | |
| | | | | | | 14 | 1.83 | 1.51 | |
| | | | | | | 28 | 1.16 | 0.89 | |
| USA (CA) Madera 2008 (Thompson Seedless) | SC 500 g | 0.225 | 0.04 conc. ^a 0.02 dilute ^b | 4 | Near mature – | 14 | 0.40 | 0.75 | 2009/7002489 R080052 |
| | | | | | | 28 | 0.29 | 0.66 | |
| USA (CA) Tulare 2008 (Red Globe) | SC 500 g | 0.225 | 0.04 conc. ^a 0.02 dilute ^b | 4 | BBCH 88 – | 14 | 0.51 | 0.71 | 2009/7002489 R080053 |
| | | | | | | 28 | 0.33 | 0.55 | |
| USA (WA) 2008 (White Riesling) | SC 500 g | 0.225 | 0.05 conc. ^a 0.02 dilute ^b | 4 | BBCH 82 – | 14 | 0.56 | 0.92 | 2009/7002489 R080054 |
| | | | | | | 28 | 0.59 | 0.61 | |
| USA (OR) | SC | 0.225 | 0.06 | 4 | BBCH 85 | 14 | 1.33 | 0.33 | 2009/7002489 |

| GRAPES Country, year (variety) | Form | Application | | | | PHI (days) | Dimethomorph Residues mg/kg Fruits | | Reference & Comments |
|--------------------------------------|-------------|-------------|---|----|---|---------------|---|--------|-------------------------|
| | | kg ai/ha | kg ai/hL | no | Growth stage at last treatment | | Conc. | Dilute | |
| 2008 (Pinot Noir) | 500 g | | conc. ^a 0.02 dilute ^b | | – | 28 | 0.55 | 0.46 | R080055 |
| USA (CA) Kern 2008 (Crimson) | SC 500 g | 0.225 | 0.04 conc. ^a 0.02 dilute ^b | 4 | BBCH 88 | 14 | 0.14 | 0.65 | 2009/7002489 R080547 |
| | | | | | – | 28 | 0.18 | 0.56 | |

^a Spray volumes of 458–713 L/ha

^b Spray volumes of 936–3663 L/ha

Strawberries

Twenty one additional (protected and outdoor) trials where dimethomorph was applied as root drench or drip irrigation and four additional (outdoor) trials where dimethomorph was applied as a foliar spray, were presented.

Root drench /drip application

In eight protected trials performed 2004 and 2007 on strawberries in three cultivars in Europe (Belgium, the Netherlands, Germany, Denmark, and northern France) dimethomorph was applied once as a root drench (green house) or (plastic tunnel) at planting/transplanting. The trials from 2004 included in addition to the treatment 0.125 g ai/plant, the treatment 0.0625 g ai/plant. The PHI was 34–46 days. The results are summarized in Table 9.

In two greenhouse trials on strawberries in Spain and south of France during growing season 2007 dimethomorph was added twice with a 14 days interval to the drip irrigation system in an amount of 0.75 kg ai/ha. The residue decline was measured 0, 1, 3 ± 1 and 7 ± 1 days after treatment. The results are summarized in Table 10.

In three outdoor trials on strawberries in Europe 2004 (Belgium, Germany and the Netherlands) dimethomorph was applied once as a root drench at planting/transplanting. The trials from 2004 included in addition to the treatment 0.125 g ai/plant, the treatment 0.0625 g ai/plant. The PHI was 43 ± day. The results are summarized in Table 11.

In eight outdoor strawberry trials in Spain (dimethomorph) was added twice to the drip irrigation system in an amount of 0.75 kg ai/ha 15 ± 1 day before harvest. Duplicate samples of strawberry fruits were sampled 0, 3, 7, 21 and 28 days after last application. PHI was one day. The results are summarized in Table 12.

Foliar spray application

In four independent outdoor strawberry trials (four cultivars) from northern Europe (Belgium, Germany, the Netherlands and United Kingdom) dimethomorph was applied once as a foliar spray at 1.5 kg ai/ha, the PHI was 35 days. The results are summarized in Table 13.

Analytical methodology

Mature fruit were sampled. In the trials reported from 2004 the strawberry fruits were analysed using GC-NDP and an extended version of the DFG S19 method reviewed by JMPR 2007. The mean recovery rate for the revised method was 90.5–111.5% at fortification levels of 0.01–1 mg/kg. The limit of quantification was 0.01 mg/kg.

In outdoor drip irrigations trials from Spain the analytical was LC-MS method PE 804 with a limit of quantification of 0.01 mg/kg, and the mean recovery rates were 89–99.2% at fortification levels of 0.015–0.3 mg/kg. The analytical method 575/0 using HPLC-MS/MS were used in the trials reported from 2008 and onwards. The limit of quantification for this method was 0.01 mg/kg and the mean recovery rates were 92–106% at fortification levels of 0.01–1 mg/kg.

Table 9 Residues in strawberries from applications of dimethomorph as root drench in protected trials in northern Europe (Belgium, the Netherlands, Germany, Northern France and Denmark)

| STRAWBERRY Country, year (variety) | Form | Application | | | PHI (days) | Dimethomorph Residues mg/kg Fruits | Reference & Comments |
|--|-------------|-------------------------|----|--|---------------|---|-------------------------------|
| | | g ai/plant ^a | no | Growth stage at treatment (BBCH) | | | |
| Critical GAP Ireland | | 0.05 | 1 | | 35 | | |
| Belgium 2004 (Elsanta) | WP 500 g | 0.125 | 1 | 19 | 34 | 0.511 | 2005/1004964/ 2010/1051738 |
| Belgium 2004 (Elsanta) | WP 500 g | 0.0625 | 1 | 19 | 34 | 0.304 | AGR/21/04 |
| The Netherlands 2004 (Elsanta) | WP 500 g | 0.125 | 1 | 19 | 34 | 0.289 | 2005/1004964/ 2010/1051738 |
| The Netherlands 2004 (Elsanta) | WP 500 g | 0.0625 | 1 | 19 | 34 | 0.257 | AGR/22/04 |
| Germany 2004 (Elsanta) | WP 500 g | 0.125 | 1 | 10 | 43 50 | 0.047 0.032 | 2005/1004964/ 2010/1051738 |
| Germany 2004 (Elsanta) | WP 500 g | 0.0625 | 1 | 10 | 43 50 | 0.030 0.028 | ACK/12/04 |
| Denmark 2004 (Everst) | WP 500 g | 0.125 | 1 | 12 | 42 80 | 0.228 0.055 | 2005/1004964/ 2010/1051738 |
| Denmark 2004 (Everst) | WP 500 g | 0.0625 | 1 | 12 | 42 80 | 0.181 0.030 | ALB/14/04 |
| Northern France 2007 (Matis) | WP 500 g | 0.125 | 1 | 11 | 36 46 | 0.18 0.21 | 2008/1051524 A7047 OB1 |
| Germany 2007 (Elsanta) | WP 500 g | 0.125 | 1 | at planting | 35 44 | 0.05 0.03 | 2008/1051524 A7047 GE1 |
| The Netherlands 2007 (Elsanta) | WP 500 g | 0.125 | 1 | at planting | 34 43 | 0.04 0.03 | 2008/1051524 A7047 NL1 |
| Belgium 2007 (Elsanta) | WP 500 g | 0.125 | 1 | at planting | 34 45 | 0.04 0.02 | 2008/1051524 A7047 BE1 |

^a 250 mL/plant

Table 10 Residues in strawberries from applications of dimethomorph as drip irrigation in protected in southern Europe, (Spain and southern France).

| STRAWBERRY Country, year (variety) | Form | Application | | | PHI (day s) | Dimethomorph Residues mg/kg Fruits | Reference & Comments |
|--|-------------|-----------------------|----|---|-------------------|---|-------------------------|
| | | kg ai/ha ^a | no | Growth stage at last treatment (BBCH) | | | |
| Spain 2007 (Camarosa) | DC 150 g | 0.75 | 2 | 87–89 | 0 1 4 7 | 0.06 0.08 0.08 0.09 | 2008/1005528 L070724 |
| South France | DC | 0.75 | 2 | 85–89 | 0 | 0.08 | 2008/1005528 |

| STRAWBERRY Country, year | Form | Application | | | PHI (day) | Dimethomorph | Reference & Comments |
|-----------------------------|-------|-------------|--|--|--------------|----------------------------|-------------------------|
| 2007 (Clery) | 150 g | | | | 1 4 7 | < 0.01 < 0.01 < 0.01 | L070725 |

^a With 2500 L water/ha

Table 11 Residues in strawberries from applications of dimethomorph as a root drench in outdoor trials in northern Europe (Belgium, the Netherlands and Germany).

| STRAWBERRY Country, year (variety) | Form | Application | | | PHI (days) | Dimethomorph Residues mg/kg Fruits | Reference & Comments |
|--|-------------|----------------------------|----|---|---------------|---|---------------------------|
| | | g ai/plant ^a | no | Growth stage at treatment (BBCH) | | | |
| Critical GAP Ireland | | 0.05 | 1 | | 35 | | |
| Belgium 2004 (Elsanta) | WP 500 g | 0.125 | 1 | 15 | 43 57 | 0.04 0.03 | 2005/1004964 AGR/19/04 |
| Belgium 2004 (Elsanta) | WP 500 g | 0.0625 | 1 | 15 | 43 57 | 0.02 0.02 | |
| The Netherlands 2004 (Elsanta) | WP 500 g | 0.125 | 1 | 15 | 43 61 | 0.01 < 0.01 | 2005/1004964 AGR/20/04 |
| The Netherlands 2004 (Elsanta) | WP 500 g | 0.0625 | 1 | 15 | 43 61 | < 0.01 < 0.01 | |
| Germany 2004 (Elsanta) | WP 500 g | 0.125 | 1 | 10 | 44 56 | 0.02 0.02 | 2005/1004964 ACK/11/04 |
| Germany 2004 (Elsanta) | WP 500 g | 0.0625 | 1 | 10 | 44 56 | 0.01 0.02 | |

^a 250 mL/plant

Table 12 Residues in strawberries from applications of dimethomorph, as drip irrigation in outdoor trials in southern Europe (Spain)

| STRAWBE RRY Country, year (variety) | Form | Application | | | PHI (days) | Dimethomorph Residues mg/kg Fruits | | Reference & Comments |
|---|-----------|-----------------------|----|---------------------------|---------------|---|---------|-------------------------|
| | | kg ai/ha ^a | no | Growth stage (BBCH) | | ind, value | average | |
| Spain 2004 (Camerosa) | DC 150 | 0.75 | 2 | 87-89 | 1 | 0.21 0.022 0.033 0.033 | 0.022 | 2006/1015075 04/S/01 |
| | | | | | 3 | 0.063 0.060 | 0.033 | |
| | | | | | 7 | 0.052 0.049 | 0.062 | |
| | | | | | 21 | 0.035 0.037 | 0.051 | |
| | | | | | 28 | | 0.036 | |
| Spain 2004 (Camerosa) | DC 150 | 0.75 | 2 | 87-89 | 1 | < 0.01 | < 0.01 | 2006/1015075 04/S/02 |
| | | | | | 3 | < 0.01 | < 0.01 | |
| | | | | | 7 | 0.022 0.023 | 0.023 | |
| | | | | | 21 | 0.016 0.015 | 0.016 | |
| | | | | | 28 | < 0.01 | < 0.01 | |

Dimethomorph

| STRAWBERRY Country, year (variety) | Form | Application | | | PHI (days) | Dimethomorph Residues mg/kg Fruits | | Reference & Comments |
|---|-----------|-----------------------|----|---------------------------|-------------------------|--|---|-------------------------|
| | | kg ai/ha ^a | no | Growth stage (BBCH) | | ind, value | average | |
| Spain 2004 (Camerosa) | DC 150 | 0.75 | 2 | 87-89 | 1 3 7 21 28 | < 0.01 0.01 < 0.01 0.019 0.019 0.063 0.063 0.034 0.034 | < 0.01 0.01 0.019 0.063 0.034 | 2006/1015075 04/S/03 |
| Spain 2004 (Camerosa) | DC 150 | 0.75 | 2 | 87-89 | 1 3 7 21 28 | 0.129 0.125 0.057 0.058 0.180 0.184 0.043 0.043 0.031 0.031 | 0.127 0.058 0.182 0.043 0.031 | 2006/1015075 04/S/04 |
| Spain 2005 (Camerosa) | DC 150 | 0.75 | 2 | 89 | 1 3 7 22 28 | 0.032 0.033 0.124 0.122 0.099 0.096 0.028 0.028 0.052 0.052 | 0.033 0.123 0.098 0.028 0.052 | 2006/1015079 05/S/05 |
| Spain 2005 (Camerosa) | DC 150 | 0.75 | 2 | 89 | 1 3 7 22 28 | 0.026 0.025 0.064 0.066 0.048 0.048 0.026 0.026 0.023 0.023 | 0.026 0.065 0.048 0.026 0.023 | 2006/1015079 05/S/06 |
| Spain 2005 (Camerosa) | DC 150 | 0.75 | 2 | 89 | 1 2 6 21 28 | 0.014 0.015 0.030 0.030 0.025 0.025 0.029 0.028 0.023 0.023 | 0.015 0.030 0.025 0.029 0.023 | 2006/1015079 05/S/07 |
| Spain 2005 (Camerosa) | DC 150 | 0.75 | 2 | 89 | 1 2 6 21 | 0.055 0.055 0.111 0.111 0.117 0.116 0.069 0.069 | 0.055 0.111 0.117 0.069 | 2006/1015079 05/S/08 |

| STRAWBERRY Country, year (variety) | Form | Application | | | PHI (days) | Dimethomorph Residues mg/kg Fruits | | Reference & Comments |
|---|------|-----------------------|----|---------------------------|---------------|---|---------|-------------------------|
| | | kg ai/ha ^a | no | Growth stage (BBCH) | | ind, value | average | |
| | | | | | 28 | 0.042 0.042 | 0.042 | |

^a With 4444 L water/ha

Table 13 Residues in strawberries from foliar applications of dimethomorph in outdoor trials in northern Europe (United Kingdom, the Netherlands, Germany and Belgium)

| STRAWBERRY Country, year (variety) | Form | Application | | | PHI (days) | Dimethomorph Residues mg/kg Fruits | Reference & Comments |
|--|-------------|-----------------------|----|---|---------------|---|--------------------------------------|
| | | kg ai/ha ^a | no | Growth stage at treatment (BBCH) | | | |
| United Kingdom 2009 (Elsanta) | WP 500 g | 1.478 | 1 | 65–71 | 0 | 131 ^b | 2009/1112576 LO90258 |
| | | | | | 28 | < 0.01 | |
| | | | | | 35 | 0.018 | |
| | | | | | 42 | 0.013 | |
| The Netherlands 2009 (Mara des Bois) | WP 500 g | 1.59 | 1 | 61 | 0 | 115 ^b | 2009/1112576 LO90259 |
| | | | | | 29 | < 0.01 | |
| | | | | | 36 | < 0.01 | |
| | | | | | 43 | < 0.01 | |
| Germany 2009 (Dorselect) | WP 500 g | 1.65 | 1 | 61 | 0 | 103 ^b | 2009/1112576 LO90260 ^c |
| | | | | | 28 | 0.014 | |
| | | | | | 35 | 0.028 | |
| | | | | | 42 | 0.013 | |
| Belgium 2009 (Charlotte) | WP 500 g | 1.598 | 1 | 65–81 | 0 | 105 ^b | 2009/1112576 LO90261 |
| | | | | | 28 | 0.061 | |
| | | | | | 35 | 0.012 | |
| | | | | | 42 | 0.012 | |

^a With 197–220 L water/ha

^b Leaves

^c Residues taken from specimen labelled as untreated. The corresponding treated specimen had residue levels < 0.01 mg/kg. It is assumed that there has been a mistake at the labelling either in the field or in the analytical phase.

Papaya

Four field trials were conducted 2011 in Brazil. Dimethomorph was applied four times as a foliar spray from the beginning of ripening until full maturity of the fruits with a 6–8 days interval.

Samples of mature whole fruit (peel and pulp) was analysed with LC/MS/MS/ using Method 535/1, The limit of quantification was 0.01 mg/kg and the mean recovery was 95–92% at fortification levels of 0.01–1.0 mg/kg. The results are summarized in Table 14 below.

Table 14 Residues in papaya from foliar application of dimethomorph in field trials in Brazil

| PAPAYA Country, year (variety) | Form | Application | | | PHI (days) | Dimethomorph Residues (mg/kg) | Reference & Comments |
|--------------------------------------|-------------|-----------------------|----|---|---------------|----------------------------------|-------------------------|
| | | kg ai/ha ^a | no | Growth stage at last treatment | | | |
| Brazil/SP 2011 (Formosa) | WP 500 g | 0.5 | 4 | BBCH | 0 | 0.39 | 2012/3001445 G100547 |
| | | 0.5 | | 81–83 | 3 | 0.38 | |
| | | 0.5 | | | 7 | 0.19 | |
| | | 0.5 | | | 14 | 0.07 | |
| Brazil/SP 2011 | WP | 0.5 | 4 | BBCH | 0 | 0.40 | 2012/3001445 |

| PAPAYA Country, year (variety) | Form | Application | | | PHI (days) | Dimethomorph Residues (mg/kg) | Reference & Comments |
|--------------------------------------|-------------|-----------------------|----|---|---------------|----------------------------------|-------------------------|
| | | kg ai/ha ^a | no | Growth stage at last treatment | | | |
| (Formosa) | 500 g | 0.5 0.5 0.5 | | 81–78 ^b | 3 7 14 | 0.18 0.26 0.03 | G100548 |
| Brazil/ES 2011 (Goldhem) | WP 500 g | 0.5 | 4 | BBCH 81–78 ^b | 7 | 0.44 | 2012/3001445 G100549 |
| Brazil/ES 2011 (THB) | WP 500 g | 0.5 | 4 | BBCH 83–78 ^b | 7 | 0.67 | 2012/3001445 G100550 |

^a with 1000 L water/ha

^b During conduction of this trial ripe fruit were discarded, therefore a decrease in BBCH is observed.

Bulb onions

Ten residue decline trials were conducted in the USA and Canada during growing season 2008. Three broadcast spray applications of dimethomorph were done at a 4–8 days interval. The growth stage for the applications varied from BBCH 19 (vegetative) until BBCH 81 (mature bulbs). Duplicate samples of onion bulb were analysed using HPLC-MS/MS Method 575/0. The limit of quantification was 0.01 mg/kg and the mean recovery was $85.9 \pm 11.8\%$ at fortification levels of 0.01–1.0 mg/kg. The results are summarized in Table 15.

Eight residue trials were performed in the USA during growing season 1999. Seven foliar directed applications were done with a 6–8 days interval. The growth stage of the applications varied from vegetative to mature bulbs. Duplicated samples were analysed using HPLV/UV Method FAMS 002/004 approved grapes at the 2007 Meeting. The limit of quantification was 0.01 mg/kg and the recovery was 70–120% at fortification levels of 0.01–0.1 mg/kg. The results are summarized in Table 15.

Table 15 Residues in onion bulbs from foliar application of dimethomorph in field trials in the USA

| Head Cabbage Country, year (variety) | Form | Application | | | PHI (days) | Dimethomorph Residues in bulbs | | Reference & Comments |
|--|-------------|--------------------|----|-----------------------------------|------------------------|--|--|-------------------------|
| | | kg ai/ha | no | Growth stage at last treatment | | ind. value | mean | |
| Critical GAP USA, Canada | | 0.21–0.23 | 3 | | 0 | | | |
| USA (NY) 2008 (Super Star Onion) | SC 500 g | 0.227 ^a | 3 | 2.5 bulbs | 0 1 3 7 10 | 0.10 0.10 0.08 0.08 0.09 0.09 0.09 0.12 0.16 0.13 | 0.10 0.08 0.09 0.11 0.13 | 2009/7004732 R080022 |
| CAN (MN) 2008 (Candy) | SC 500 g | 0.226 ^a | 3 | vegetative | 0 1 3 7 10 | 0.09 0.07 0.06 0.04 0.03 0.03 0.02 0.02 0.01 0.01 | 0.08 0.05 0.03 0.03 0.02 0.02 0.01 0.01 | 2009/7004732 R080023 |
| CAN (KS) | SC | 0.226 ^a | 3 | BBCH 48 | 0 | 0.16 | 0.16 | 2009/7004732 |

| Head Cabbage Country, year (variety) | Form | Application | | | PHI (days) | Dimethomorph Residues in bulbs | | Reference & Comments |
|--|-------------|--------------------|---|-------------------------|------------------------|--|--|-------------------------|
| | | | | | | | | |
| 2008 (Candy) | 500 g | | | | 1 3 7 10 | 0.15 0.07 0.06 0.08 0.04 0.04 0.05 0.05 0.06 | 0.07 0.06 0.05 0.06 | R080024 |
| CAN (MB) 2008 (Genisis Hybrid) | SC 500 g | 0.220 ^a | 3 | BBCH 47 | 0 1 3 7 10 | 0.37 0.40 0.31 0.28 0.21 0.21 0.06 0.05 0.13 0.12 | 0.38 0.3 0.21 0.06 0.13 | 2009/7004732 R080025 |
| USA (CA) 2008 (White) | SC 500 g | 0.221 ^a | 3 | Mature | 0 1 3 7 10 | 0.04 0.04 0.06 0.03 0.10 0.11 0.21 0.15 0.02 0.03 | 0.04 0.05 0.02 0.18 0.03 | 2009/7004732 R080027 |
| USA (TX) 2008 (Yellow Spanish) | SC 500 g | 0.23 ^a | 3 | Tops falling | 0 1 3 7 10 | 0.16 0.20 0.03 0.11 0.04 0.08 0.02 0.03 0.01 0.02 | 0.18 0.07 0.06 0.03 0.02 | 2009/7004732 R080028 |
| USA (CA) 2008 (Southport) | SC 500 g | 0.226 ^a | 3 | 2.5 th bulbs | 0 1 3 7 10 | 0.25 0.26 0.04 0.22 0.29 0.26 0.17 0.14 0.14 0.19 | 0.26 0.13 0.28 0.155 0.165 | 2009/7004732 R080029 |
| USA (ID) 2008 (Vaquero) | SC 500 g | 0.223 ^a | 3 | growth complete | 0 1 3 7 10 | 0.05 0.06 0.04 0.05 0.03 0.03 0.02 0.03 < 0.01 0.01 | 0.06 0.045 0.03 0.025 0.01 | 2009/7004732 R080030 |
| USA (OR) 2008 (White Sweet Spanish) | SC 500 g | 0.230 ^a | 3 | BBCH 49 | 0 1 | 0.05 0.05 0.04 0.03 | 0.05 0.04 | 2009/7004732 R080684 |

| Head Cabbage Country, year (variety) | Form | Application | | | PHI (days) | Dimethomorph Residues in bulbs | | Reference & Comments |
|--|-------------|--------------------|-----------|-------------------------|---------------|--------------------------------------|--------|-------------------------|
| | | Rate | Frequency | Product | | 0 days | 7 days | |
| | | | | | 3 | 0.05 0.19 | 0.12 | |
| | | | | | 7 | 0.07 0.05 | 0.06 | |
| | | | | | 10 | 0.07 0.04 | 0.055 | |
| USA (TX) 2008 (Yellow Granex) | SC 500 g | 0.23 ^a | 3 | BBCH 47 | 0 | 0.24 0.21 | 0.23 | 2009/7004732 R080690 |
| | | | | | 1 | 0.21 0.20 | 0.205 | |
| | | | | | 3 | 0.19 0.19 | 0.19 | |
| | | | | | 7 | 0.13 0.11 | 0.12 | |
| | | | | | 10 | 0.09 0.09 | 0.09 | |
| USA (CA) 1999 (Early red burger) | WP 500 g | 0.225 ^b | 7 | Mature bulbs | 0 | 0.10 0.22 | 0.16 | 2002/7013745 CA 06 |
| USA (CA) 1999 (Reina Blanca) | WP 500 g | 0.225 ^b | 7 | Bulbs formed | 0 | 0.08 0.10 | 0.09 | 2002/7013745 CA 07 |
| USA (CO) 1999 (Teton) | WP 500 g | 0.225 ^b | 7 | Mature bulbs | 0 | 0.10 0.12 | 0.11 | 2002/7013745 CO 01 |
| USA (ID) 1999 (Vega) | WP 500 g | 0.225 ^b | 7 | Mature bulbs | 0 | 0.03 0.06 | 0.04 | 2002/7013745 ID 01 |
| USA (NY) 1999 (Hustler) | WP 500 g | 0.225 | 7 | Mature bulbs | 0 | 0.07 0.13 | 0.10 | 2002/7013745 NY 02 |
| USA (NY) 1999 (Burgos) | WP 500 g | 0.225 ^b | 7 | Vegetative ^c | 0 | 1.411– 0.220 | 0.82 | 2002/7013745 OH 06 |
| USA (OR) 1999 (Santos FI) | WP 500 g | 0.225 ^b | 7 | Mature bulbs | 0 | 0.27 0.28 | 0.27 | 2002/7013745 OR 10 |
| USA (TX) 1999 (1015) | WP 500 g | 0.225 ^b | 7 | Mature bulbs | 0 | 0.07 0.08 | 0.08 | 2002/7013745 TX02 |
| | | | | | 3 | 0.04 0.05 | 0.05 | |
| | | | | | 7 | 0.05 0.06 | 0.06 | |

^a With 274–312 L water/ha

^b With 284–730 L water/ha

^c Crop height 12–15'

Leek

Nineteen residue decline trials were conducted in Europe during growing seasons 1999 and 2006. Dimethomorph was applied three times as a foliar spray. The applications were made 34–14 ± 1 days before harvest with a spray interval of 10–11 days.

Samples of leek stems were analysed using LC/MS/MS Method 575/0. The limit of quantification was 0.01–0.02 mg/kg and the recovery was 74–103%. The results are summarized in Table 16.

Table 16 Residues of dimethomorph in leek from field trials conducted in Europe

| LEEK Country, year (variety) | Form | Application | | | PHI (days) | Dimethomorph Residues (mg/kg) stem | | Reference & Comments |
|---------------------------------------|--------|-----------------------|----|--------------------------------------|--------------------------|---|-------------------------------|-------------------------|
| | | kg ai/ha ^a | no | Growth stage at last treatment | | ind. value | | |
| Critical GAP France | | 0.18 | 2 | | 14 | | | |
| Germany, 1999 (Lancelot) | WG 9 g | 0.18 | 3 | 12 leaves | 0 7 14 21 28 | 0.67 0.24 0.08 0.08 0.03 | 2001/1026153 FR22/06/40 | |
| Germany, 2001 (Hiberna) | WG 9 g | 0.18 | 3 | 2.5–3.0 cm | 0 7 14 21 28 | 0.62 0.44 0.07 0.06 0.03 | 2002/1019891 01/047 | |
| Germany, 2001 (Hiberna) | WG 9 g | 0.18 | 3 | mature | 14 21 | 0.05 0.04 | 2002/1019892 01/048 | |
| Germany, 2001 (Florina) | WG 9 g | 0.18 | 3 | 2 weeks before harvest | 0 7 14 21 28 | 1.6 0.05 < 0.02 < 0.02 < 0.02 | 2002/1019893 01/090 | |
| Germany, 2001 (Amundo) | WG 9 g | 0.18 | 3 | 43 | 14 21 | < 0.02 < 0.02 | 2002/1019893 01/091 | |
| Germany, 2001 (Werdea) | WG 9 g | 0.18 | 3 | 2 weeks before harvest. | 14 21 | 0.03 0.02 | 2002/1019893 01/092 | |
| Germany, 2001 (Werdea) | WG 9 g | 0.18 | 3 | 2 weeks before harvest | 14 21 | 0.04 0.05 | 2002/1019893 01/093 | |
| Northern France, 2005 (Elektra) | WG 9 g | 0.18 | 3 | 45 | 0 7 14 21 | 2.23 0.20 0.10 0.06 | 2007/1008491 A/NF/F/05/222 | |
| Southern France 2005 (Amundo) | WG 9 g | 0.18 | 3 | 47 | 0 7 14 21 | 0.56 1.02 0.69 0.18 | 2007/1008491 A/SF/F/05/223 | |
| Germany, 2005 (Appolo) | WG 9 g | 0.18 | 3 | 45–49 | 0 7 15 22 | 1.42 0.16 0.08 0.07 | 2007/1008491 A/NF/F/05/224 | |
| Belgium, 2005 (Sheltar) | WG 9 g | 0.18 | 3 | 47–49 | 0 7 14 21 | 0.29 0.22 0.04 0.03 | 2007/1008491 A/NF/F/05/225 | |
| The Netherlands, 2005 (Kenton) | WG 9 g | 0.18 | 3 | 44 | 0 7 14 21 | 0.34 0.21 0.11 0.03 | 2007/1008491 A/NF/F/05/226 | |
| Italy, 2005 (Kenton F1) | WG 9 g | 0.18 | 3 | 46–47 | 0 7 14 21 | 0.39 0.54 0.21 0.30 | 2007/1008491 A/IT/F/05/227 | |
| N. France 2006 (Axima) | WG 9 | 0.18 | 3 | 43 | 0 7 14 21 | 0.81 0.15 0.10 0.05 | 2007/1008500 A/NF/F/06/81 | |

| LEEK Country, year (variety) | Form | Application | | | PHI (days) | Dimethomorph Residues (mg/kg) stem | | Reference & Comments |
|--------------------------------------|--------|-----------------------|----|--------------------------------------|--------------------|---------------------------------------|------------------------------|-------------------------|
| | | kg ai/ha ^a | no | Growth stage at last treatment | | ind. value | | |
| The Netherlands, 2006 (Kenton) | WG 9 g | 0.18 | 3 | 47–48 | 0 7 14 21 | 0.33 0.08 0.04 0.02 | 2007/1008500 A/NF/F/06/82 | |
| Denmark, 2006 (Pandora) | WG 9 g | 0.18 | 3 | 49 | 0 7 14 21 | 0.46 0.05 < 0.01 0.01 | 2007/1008500 A/DK/F/06/83 | |
| UK, 2006 (Pancho) | WG 9 g | 0.18 | 3 | 44 | 0 6 13 21 | 0.84 0.17 0.13 0.02 | 2007/1008500 A/UK/F/06/84 | |
| Spain, 2006 (Atal) | WG 9 g | 0.18 | 3 | 46–47 | 0 6 13 20 | 0.27 0.39 0.06 0.02 | 2007/1008500 A/SP/F/06/85 | |
| Greece, 2006 (Demycalemy) | WG 9 g | 0.18 | 3 | 43–46 | 0 7 14 21 | 0.88 0.11 0.08 0.05 | 2007/1008500 A/GR/F/06/86 | |

^a Spray volumes of 372–600 L/ha

Spring onions

During growing season 2011 three outdoor trials were conducted in the USA. Three broadcast spray applications of dimethomorph were made at a 5–6 days interval. The growth stage for the applications varied within BBCH 41–49 (development of harvestable vegetative plant parts).

Three outdoor residue decline trials were conducted in USA 2008. Three broad cast spray applications of dimethomorph were made at a 4–8 days interval. The growth stage for the applications varied from 12 days before first sampling until growth complete.

Duplicate samples from treated plots were analysed with LC/MS/MS using Method 575/0. The limit of quantification was 0.01 mg/kg and the mean recovery was 76–114% and 74–93% for the trials from 2011 and 2008 respectively at fortification levels of 0.01–10.0 mg/kg. The results are summarized in Table 17.

Table 17 Residues of dimethomorph in spring onions from field trials conducted in USA

| SPRING ONION Country, year (variety) | Form | Application | | | PHI (days) | Dimethomorph Residues in whole plants | | Reference & Comments |
|---|-------------|-------------------|----|--------------------------------------|---------------|--|------|-------------------------|
| | | kg ai/ha | no | Growth stage at last treatment | | ind. value | mean | |
| Critical GAP USA, Canada | | 0.21–0.23 | 3 | | 0 | | | |
| USA (OK) 2011 (Walla, Walla) | SC 225 g | 0.25 ^a | 3 | BBCH 43 | 0 | 1.92 | 2.35 | 2013-7001787 R110160 |
| | | | | | 0 | 2.78 | | |
| USA (TX) 2011 (Local sort not specified) | SC 225 g | 0.25 ^a | 3 | BBCH 41 | 1 | 1.97 | 2.09 | 2013-7001787 R110161 |
| | | | | | 1 | 2.21 | | |
| | | | | | 0 | 1.78 | 2.45 | |
| | | | | | 0 | 3.12 | | |
| | | | | | 1 | 2.07 | 2.03 | |
| | | | | | 1 | 1.99 | | |

| SPRING ONION Country, year (variety) | Form | Application | | | PHI (days) | Dimethomorph Residues in whole plants | | Reference & Comments |
|--|-------------|--------------------|----|---|---------------|---|------|-------------------------|
| | | kg ai/ha | no | Growth stage at last treatment | | ind. value | mean | |
| USA (CA) 2011 (Evergreen White) | SC 225 g | 0.25 ^a | 3 | BBCH 49 | 0 | 1.26 | 1.27 | 2013-7001787 R110162 |
| | | | | | 0 | 1.28 | | |
| | | | | | 1 | 0.88 | 0.91 | |
| USA (CA) 2008 (APT 410) | SC 500 g | 0.225 ^b | 3 | Growth complete | 0 | 1.34 | 1.56 | 2009/7004732 R080033 |
| | | | | | 0 | 1.78 | | |
| | | | | | 1 | 1.36 | 1.42 | |
| | | | | | 1 | 1.48 | | |
| | | | | | 3 | 0.78 | 0.72 | |
| | | | | | 3 | 0.66 | | |
| | | | | | 7 | 0.28 | 0.22 | |
| USA (CA) 2008 (Southport White) | SC 500 g | 0.225 ^b | 3 | Mature | 0 | 1.79 | 1.79 | 2009/7004732 R080034 |
| | | | | | 0 | 1.79 | | |
| | | | | | 1 | 1.73 | 1.76 | |
| | | | | | 1 | 1.78 | | |
| | | | | | 3 | 1.46 | 1.64 | |
| | | | | | 3 | 1.81 | | |
| | | | | | 7 | 0.79 | 0.92 | |
| USA (TX) 2008 (Yellow Granex) | SC 500 g | 0.225 ^b | 3 | BBCH 15 | 0 | 6.60 | 5.36 | 2009/7004732 R080691 |
| | | | | | 0 | 4.11 | | |
| | | | | | 1 | 3.19 | 3.24 | |
| | | | | | 1 | 3.28 | | |
| | | | | | 3 | 2.49 | 2.64 | |
| | | | | | 3 | 2.78 | | |
| | | | | | 7 | 0.99 | 0.92 | |
| | | | | | 7 | 0.85 | | |
| | | | | | 10 | 0.75 | 0.72 | |
| | | | | | 10 | 0.69 | | |

^a With 187–337 L water/ha

^b With 278–291 L water/ha

During growing season 1999 four trials were performed on spring onions in the USA. Seven to eight foliar directed spray applications of dimethomorph formulation were made at 5–8 days interval. The growth stage for applications varied within growth stage development of harvestable vegetative plant parts (BBCH 41–49) from vegetative until vegetative (mature).

Duplicate samples (whole vegetable) from treated plots were sampled on the day of seventh application. The samples were analysed with LC/MS/MD using Method 575/0. The limit of quantification was 0.05 mg/kg and the mean recovery was 92–114% at fortification levels of 0.05–5.0 mg/kg. The results are summarized in Table 18.

Table 18 Residues in spring onions from foliar application of dimethomorph in field trials in the USA

| SPRING ONION Country, year (variety) | Form | Application | | | PHI (days) | Dimethomorph Residues in whole plants | | Reference & Comments |
|--|-------|-------------|----|-----------------------------------|---------------|---|-------|-------------------------|
| | | kg ai/ha | no | Growth stage at last treatment | | ind. value | mean | |
| Critical GAP USA | | 0.21 | 3 | | 0 | | | |
| USA (NJ) 1999 (Bunchine) | WP 50 | 0.225 | 7 | Vegetative mature | 0 0 | 0.641 0.653 | 0.647 | 2002/7013746 NJ 05 |
| USA (FL) 1999 (White Spear) | WP 50 | 0.225 | 7 | Vegetative mature | 0 0 | 0.721 0.776 | 0.749 | 2002/7013746 FL 18 |
| USA (WI) 1999 (Evergreen) | WP 50 | 0.225 | 7 | vegetative | 0 0 | 0.887 0.945 | 0.915 | 2002/7013746 WI 24 |
| USA (OR) 1999 (Feast) | WP 50 | 0.225 | 7 | Mature | 0 0 | 1.21 1.22 | 1.22 | 2002/7013746 OR09 |
| | | | 8 | | 0 0 | 0.862 0.899 | 0.881 | |

^a With 265–474 L water/ha

Head cabbage

Ten field trials were conducted in the USA (nine) and Canada (one) during growing season 2008. Three foliar broadcast applications of dimethomorph were made with a 5–9 days interval. The growth stage for the applications varied from vegetative stage to mature heads.

Duplicate samples of cabbage heads (including wrapper leaves) were analysed with LC-MS/MS using Method 575/0. The limit of quantification was 0.01 mg/kg and the mean recovery was 108% at fortification levels of 0.01–10.0 mg/kg. The results are summarized in Table 19.

Table 19 Residues in head cabbage (with wrapper) from foliar application of dimethomorph in field trials from the USA

| Head Cabbage Country, year (variety) | Form | Application | | | | PHI (days) | Dimethomorph Residues Head cabbage with wrapper leaves (mg/kg) | | Reference & Comments |
|--|-------------|-----------------------|----------|----|---|---------------|--|-------|-----------------------------|
| | | kg ai/ha ^a | kg ai/hL | no | Growth stage at last treatment | | ind. value | mean | |
| Critical GAP USA | | 0.21 | | 3 | | 0 | | | |
| USA (NY) 2008 (Rocket) | SC 500 g | 0.225 | 0.106 | 3 | mature heads | 0 | 0.74 0.97 | 0.86 | 2009/7006205 RCN R080068 |
| | | | | | | 1 | 0.86 0.85 | 0.86 | |
| | | | | | | 3 | 0.21 0.28 | 0.25 | |
| | | | | | | 7 | 0.11 0.08 | 0.095 | |
| | | | | | | 10 | 0.07 0.06 | 0.07 | |
| USA (GA) | SC | 0.225 | 0.107 | 3 | 4–8" | 0 | 1.15 | 1.08 | 2009/7006205 |

| Head Cabbage Country, year (variety) | Form | Application | | | | PHI (days) | Dimethomorph Residues Head cabbage with wrapper leaves (mg/kg) | | Reference & Comments |
|--|-------------|-------------|-------|---|-----------------|------------------------|--|--------------------------------------|-----------------------------|
| | | | | | | | | | |
| 2008 (Thunder) | 500 g | | | | heads | 1 3 7 10 | 1.01 0.97 0.95 0.45 0.51 0.12 0.09 0.09 0.08 | 0.96 0.48 0.11 0.09 | RCN R080069 |
| USA (FL) 2008 (White) | SC 500 g | 0.225 | 0.105 | 3 | mature heads | 0 1 3 7 10 | 1.24 1.49 1.28 1.28 0.30 0.27 0.18 0.23 0.14 0.19 | 1.37 1.28 0.29 0.21 0.17 | 2009/7006205 RCN R080070 |
| USA (MN) 2008 (Market Pride) | SC 500 g | 0.225 | 0.107 | 3 | vegetativ e | 0 1 3 7 10 | 0.14 0.13 0.14 0.13 0.15 0.19 0.03 0.05 0.03 0.04 | 0.14 0.14 0.17 0.04 0.04 | 2009/7006205 RCN R080071 |
| Canada (QC) 2008 (Stonehead) | SC 500 g | 0.225 | 0.105 | 3 | BBCH 49 | 0 1 3 7 10 | 1.54 1.17 1.51 1.51 0.25 0.24 0.22 0.22 0.08 0.13 | 1.36 1.51 0.25 0.22 0.11 | 2009/7006205 RCN R080072 |
| USA (WI) 2008 (Artost) | SC 500 g | 0.225 | 0.106 | 3 | BBCH 48 | 0 1 3 7 10 | 0.68 1.22 1.25 0.07 0.08 0.80 0.21 0.13 0.10 | 0.95 1.08 0.08 0.51 0.12 | 2009/7006205 RCN R080073 |
| USA (TX) 2008 (Pennant) | SC 500 g | 0.225 | 0.107 | 3 | BBCH 49 | 0 1 3 7 10 | 0.91 0.66 1.28 1.15 0.82 1.14 0.20 0.17 0.97 0.27 | 0.79 1.22 0.51 0.19 0.62 | 2009/7006205 RCN R080074 |
| USA (KS) 2008 (Stonehead) | SC 500 g | 0.225 | 0.106 | 3 | mature heads | 0 | 3.90 4.61 | 4.26 | 2009/7006205 RCN R080075 |

| Head Cabbage Country, year (variety) | Form | Application | | | | PHI (days) | Dimethomorph Residues Head cabbage with wrapper leaves (mg/kg) | | Reference & Comments |
|--|-------------|-------------|----------|----|---|---------------|--|------|-----------------------------|
| | | kg ai/ha | kg ai/hL | no | Growth stage at last treatment | | ind. value | mean | |
| | | | | | | 1 | 4.09 4.21 | 4.15 | |
| | | | | | | 3 | 3.23 3.65 | 3.44 | |
| | | | | | | 7 | 1.27 1.21 | 1.24 | |
| | | | | | | 10 | 0.78 0.62 | 0.07 | |
| USA (CA) 2008 (Copenhagen) | SC 500 g | 0.225 | 0.110 | 3 | mature heads | 0 | 0.45 0.42 | 0.44 | 2009/7006205 RCN R080076 |
| | | | | | | 1 | 0.48 0.43 | 0.46 | |
| | | | | | | 3 | 0.23 0.16 | 0.19 | |
| | | | | | | 7 | 0.19 0.16 | 0.18 | |
| | | | | | | 10 | 0.09 0.11 | 0.10 | |
| USA (OR) 2008 (Primo) | SC 500 g | 0.225 | 0.106 | 3 | BBCH 49 | 0 | 0.52 0.38 | 0.45 | 2009/7006205 RCN R080077 |
| | | | | | | 1 | 0.23 0.29 | 0.26 | |
| | | | | | | 3 | 0.26 0.22 | 0.24 | |
| | | | | | | 7 | 0.04 0.05 | 0.05 | |
| | | | | | | 10 | 0.03 0.03 | 0.03 | |

^a With 267–295 L water/ha

Broccoli

Ten field trials were conducted in the USA (nine) and Canada (one) during growing season 2008. Three foliar broadcast applications of dimethomorph were applied with a spray interval of 5–9 days. The growth stage for the applications varied from vegetative stage to mature heads.

Duplicate samples of flower heads and stem were and analysed with LC-MS/MS using Method 575/0. The limit of quantification was 0.01 mg/kg and the mean recovery was 99% at fortification levels of 0.01–5.0 mg/kg. The results are summarized in Table 20.

Table 20 Residues in broccoli from foliar application of dimethomorph in field trials in the USA

| BROCCOLI Country, year (variety) | Form | Application | | | | PHI (days) | Dimethomorph Residues in flower head (inflorescence) (mg/kg) | | Reference & Comments |
|--|-------------|-------------|----------|----|---|---------------|---|-------|-----------------------------|
| | | kg ai/ha | kg ai/hL | no | Growth stage at last treatment | | ind. value | mean | |
| Critical GAP USA | | 0.21 | | 3 | | 0 | | | |
| CAN (QC) 2008 (Packman) | SC 500 g | 0.230 | 0.08 | 3 | BBCH 605 | 0 | 1.23 1.64 | 1.435 | 2009/7006205 RCN R080058 |
| | | | | | | 1 | 1.45 1.53 | 1.49 | |
| | | | | | | 3 | 0.44 0.34 | 0.39 | |
| | | | | | | 7 | 0.16 | 0.155 | |

| BROCCOLI Country, year (variety) | Form | Application | | | | PHI (days) | Dimethomorph Residues in flower head (inflorescence) (mg/kg) | | Reference & Comments |
|---|-------------|-------------|-------|---|-------------------|------------------------|--|--|-----------------------------|
| | | | | | | | | | |
| | | | | | | 10 | 0.15 0.03 0.02 | 0.025 | |
| USA (WI) 2008 ^a (Packman) | SC 500 g | 0.226 | 0.08 | 3 | 6–10" heads | 0 1 3 7 10 | 1.61 1.62 0.82 1.02 0.53 0.53 0.16 0.14 0.06 0.04 | 1.62 0.92 0.53 0.15 0.05 | 2009/7006205 RCN R080059 |
| USA (WI) 2008 (Packman) | SC 500 g | 0.240 | 0.086 | 3 | BBCH 48 | 0 1 3 7 10 | 0.93 0.87 0.81 0.27 0.29 0.20 0.19 0.10 0.11 | 0.9 0.795 0.28 0.195 0.105 | 2009/7006205 RCN R080060 |
| USA (CA) 2008 (Green Majic) | SC 500 g | 0.221 | 0.079 | 3 | Mature | 0 1 3 7 10 | 1.82 1.67 1.64 1.24 0.72 0.84 0.38 0.46 0.16 0.22 | 1.745 1.44 0.78 0.42 0.19 | 2009/7006205 RCN R080062 |
| USA (CA) 2008 (Marathon) | SC 500 g | 0.225 | 0.08 | 3 | Mature heads | 0 1 3 7 10 | 2.14 1.96 2.62 2.04 1.40 1.46 0.85 0.98 0.79 0.72 | 2.05 2.33 1.43 0.915 0.755 | 2009/7006205 R080063 |
| USA (CA) 2008 (Green Magic) | SC 500 g | 0.223 | 0.079 | 3 | Mature heads | 0 1 3 7 10 | 0.71 0.64 0.51 0.36 0.38 0.41 0.15 0.14 0.08 0.12 | 0.675 0.435 0.395 0.145 0.10 | 2009/7006205 RCN R080064 |
| USA (AZ) 2008 (Crown Set) | SC 500 g | 0.229 | 0.08 | 3 | Early maturity | 0 1 3 7 | 0.30 0.19 0.23 0.13 0.12 0.12 0.03 0.09 | 0.245 0.18 0.12 0.06 | 2009/7006205 RCN R080065 |

| BROCCOLI Country, year (variety) | Form | Application | | | | PHI (days) | Dimethomorph Residues in flower head (inflorescence) (mg/kg) | | Reference & Comments |
|--|-------------|-------------|-------|---|------------|---------------|---|-------|-----------------------------|
| | | | | | | | | | |
| | | | | | | 10 | 0.03 0.08 | 0.55 | |
| USA (CA) 2008 (Greenbelt) | SC 500 g | 0.227 | 0.081 | 3 | BBCH 49 | 0 | 1.87 1.89 | 1.88 | 2009/7006205 RCN R080066 |
| | | | | | | 1 | 1.64 1.41 | 1.525 | |
| | | | | | | 3 | 1.41 0.99 | 1.2 | |
| | | | | | | 7 | 0.85 0.77 | 0.81 | |
| | | | | | | 10 | 0.66 0.50 | 0.58 | |
| USA (OR) 2008 (Emerald Pride) | SC 500 g | 0.226 | 0.079 | 3 | BBCH 47 | 0 | 0.98 0.91 | 0.945 | 2009/7006205 RCN R080067 |
| | | | | | | 1 | 0.74 0.71 | 0.725 | |
| | | | | | | 3 | 0.07 0.11 | 0.09 | |
| | | | | | | 7 | 0.04 0.05 | 0.045 | |
| | | | | | | 10 | < 0.01 0.03 | 0.02 | |
| USA (TX) 2008 (Marathon) | SC 500 g | 0.223 | 0.084 | 3 | BBCH 49 | 0 | 0.84 0.64 | 0.74 | 2009/7006205 RCN R080685 |
| | | | | | | 1 | 0.59 0.53 | 0.56 | |
| | | | | | | 3 | 0.47 0.72 | 0.595 | |
| | | | | | | 7 | 0.31 0.26 | 0.285 | |
| | | | | | | 10 | 0.12 0.15 | 0.135 | |

^a With 267–295 L water/ha

Pepper (bell and non-bell)

Twelve outdoor trials on bell peppers and non-bell peppers were conducted in the USA during growing seasons 1998 and 1999. Seven foliar broadcast applications of dimethomorph were made with a 4–15 days interval. The growth stage for the applications was from vegetative (5–16 cm) to mature heads. Three of the trials were decline trials.

Duplicate samples were analysed using GC-ECD method FAMS 002-04. The average procedural recovery range for dimethomorph was (95–119%) at the fortification level of 0.025–5 mg/kg and the limit of quantification was 0.025 mg/kg. The results are summarized in Table 21.

Table 21 Residues in pepper (bell and non-bell) from outdoor foliar application of dimethomorph in trials in USA

| PEPPER Country, year (variety) | Form | Application | | | PHI (days) | Dimethomorph Residues (mg/kg) fruit | | Reference & Comments |
|---------------------------------------|-------------|--------------------------|---|----|----------------|--|-------|-------------------------|
| | | kg ai/ha ^d | Growth stage at last treatment | no | | ind. value | mean | |
| Critical GAP Canada | | 0.225 | | 5 | 0 | | | |
| USA (NJ) 1999 (bell, Bell Captain) | WP 500 g | 0.225 | Mature fruit | 7 | 0 | 0.125 0.126 | 0.126 | 2002/7013750 NJ01 |
| USA (NJ) 1998 | WP | 0.225 | Mature | 7 | 6 ^a | 0.165 | 0.179 | 2002/7013750 |

| PEPPER Country, year | Form | Application | | | PHI (days) | Dimethomorph Residues (mg/kg) fruit | | Reference & Comments |
|---|-------------|-------------|-----------------|---------------|---------------|--|--|-------------------------|
| | | kg ai/ha | no | PHI (days) | | fruit | fruit | |
| (bell King Arthur) | 500 g | | fruit | | | 0.192 | | NJ10 |
| USA (GA) 1998 (bell, Camelot) | WP 500 g | 0.225 | Mature fruit | 7 | 0 0 | 0.429 0.526 0.753 0.921 | 0.478 ^b 0.837 ^c | 2002/7013750 GA 08 |
| USA (GA) 1998 (non-bell, Mesilla) | WP 500 g | 0.225 | Mature fruit | 7 | 0 | 0.884 1.205 | 1.045 | 2002/7013750 GA 09 |
| USA (FL) 1998 (bell, Camelot) | WP 500 g | 0.225 | Mature fruit | 7 | 0 7 | 0.084 0.088 0.035 0.061 | 0.057 0.048 | 2002/7013750 FL 26 |
| USA (FL) 1998 (non-bell, Jalapeno) | WP 500 g | 0.225 | Mature fruit | 7 | 0 | 0.078 0.081 | 0.08 | 2002/7013750 FL 27 |
| USA (OH) 1998 (bell, King Arthur) | WP 500 g | 0.225 | Fruiting | 7 | 0 | < 0.025 0.044 | 0.035 | 2002/7013750 OH 03 |
| USA (TX) 1998 (bell, Capistrano) | WP 500 g | 0.225 | Mature fruit | 7 | 0 7 | 0.107 0.110 0.027 0.030 | 0.109 0.029 | 2002/7013750 TX 09 |
| USA (TX) 1998 (bell, TAM Veracruz) | WP 500 g | 0.225 | Mature fruit | 7 | 0 | 0.660 0.730 | 0.695 | 2002/7013750 TX 10 |
| USA (CA) 1998 (bell, Valiant) | WP 500 g | 0.225 | Fruiting | 7 | 0 | 0.130 0.134 | 0.132 | 2002/7013750 CA 23 |
| USA (CA) 1998 (bell, Indra) | WP 500 g | 0.225 | Mature fruit | 7 | 0 6 | 0.137 0.144 0.163 0.166 | 0.141 0.165 | 2002/7013750 CA 27 |
| USA (CA) 1998 (non-bell, Rogers Jalapone M) | WP 500 g | 0.225 | Mature fruit | 7 | 0 | 0.211 0.296 | 0.254 | 2002/7013750 CA 28 |

^a At the NJ10 trial samples were collected at 6 days after last application, the 0 day was lost due to freezer failure. This trial was repeated the following year (NJ01)

^b Harvested after six applications, because the peppers were ripening faster than expected and the fruit was not expected to last for the 7th application

^c Harvested after seven applications. At the 7th application there was sufficient fruit for a good harvest and a sample good be taken

^d Spray volumes of 275–625 L/ha

Tomato

Twelve outdoor trials on tomato were evaluated by JMPR 2007. Results from those trials are presented in Table 22 below.

Table 22 Residues in tomato from outdoor foliar application of dimethomorph in trials in the USA

| TOMATO Country, year (variety) | Form | Application | | | Dimethomorph Residues (mg/kg) fruit | Reference & Comments |
|--|-------------|-------------|----|-------------------------|---|-------------------------|
| | | kg ai/ha | no | PHI (days) | | |
| Critical GAP Canada | | 0.225 | 5 | 0 | | |
| USA (CA) 1995 (Flaver saver Calgene) | WP 500 g | 0.22 | 6 | 0 3 7 14 21 | 0.07 < 0.05 0.06 < 0.05 0.05 | DK-723-028 |
| USA (CA) 1995 (Heniz 8892) | WP 500 g | 0.22 | 6 | 0 3 7 | 0.2 0.41 0.22 | DK-723-031 |

| TOMATO Country, year (variety) | Form | Application | | | Dimethomorph Residues (mg/kg) | Reference & Comments |
|--------------------------------------|-------------|-------------|----|-------------------------|--|-------------------------|
| | | kg ai/ha | no | PHI (days) | fruit | |
| USA (CA) 1995 (Peach Mech) | WP 500 g | 0.22 | 6 | 0 3 7 | 0.38 0.26 0.16 | DK-723-030 |
| USA (CA) 1995 (Shady Lady) | WP 500 g | 0.22 | 6 | 0 3 7 14 21 | 0.11 0.08 0.06 0.05 < 0.05 | DK-723-029 |
| USA (TE) 1995 (Better Boy) | WP 500 g | 0.22 | 6 | 0 3 7 14 21 | 0.14 0.21 0.17 < 0.05 < 0.05 | DK-723-027 |
| USA (CA) 1998 (Rio Grande) | WP 90 g | 0.22 | 6 | 0 3 7 | 0.06 0.05 < 0.05 | DK-723-034 |
| USA (CA) 1998 (Celebrity) | WP 90 g | 0.22 | 7 | 0 3 7 | 0.35 0.51 0.35 | DK-723-043 |
| USA (CA) 1998 (Roma Hybrid 882) | WP 90 g | 0.22 | 7 | 0 3 7 | 0.13 0.14 0.1 | DK-123-249 |
| USA (CA) 1998 (Sun 6200) | WP 90 g | 0.22 | 7 | 0 3 7 | 0.3 0.14 0.09 | DK-723-048 |
| USA (FL) 1996 (Agriset) | WP 90 g | 0.22 | 7 | 0 3 7 | < 0.05 < 0.05 < 0.05 | DK-723-032 |
| USA (PE) 1996 (La Roma) | WP 90 g | 0.22 | 7 | 0 3 7 | < 0.05 < 0.05 < 0.05 | DK-723-036 |
| USA (SC) 1996 (Celebrity) | WP 90 g | 0.22 | 7 | 0 3 7 | 0.06 < 0.05 < 0.05 | DK-723-035 |

Lettuce, head

Eight outdoor residue decline trials from the USA (seven) and Canada (one) in lettuce head were conducted during growing season 2008. Dimethomorph was applied three times as a foliar broadcast spray and a spray interval of 4–8 days. The timing of the applications was from head development until mature heads. Duplicate samples (fresh heads with wrappers leaves) were analysed with HPLC-MS/MS using Method 575/0. The limit of quantification was 0.01 mg/kg and the mean recovery 75% at fortification levels from 0.01–20.0 mg/kg. The results are summarized in Table 23.

In six similar trials from the USA made in during the growing season of 1998, dimethomorph was applied seven to eight times as foliar spray with a spray interval of 5 to 11 days. Mature heads were analysed using GC-ECD and Method FAMS 002-04. The limit of quantification was 0.025 mg/kg and the mean recovery 101 ± 15 fortification level from 0.025–10 mg/kg. The results are summarized in Table 24.

Table 23 Residues in outdoor lettuce head from foliar application of dimethomorph in trials from the USA

| LETTUCE, HEAD Country, year (variety) | Form | Application | | | PHI (days) | Dimethomorph Residues (mg/kg) | | Reference & Comments |
|--|---------------|--------------------------|----|--|---------------|-------------------------------------|------------------|-----------------------------|
| | | kg ^b ai/ha | no | Growth stage at last treatment | | Heads, Fresh with wrapper leaves | | |
| | | | | | | individual value | average value | |
| Critical GAP USA | SC | 0.19 | 3 | | 0 | | | |
| USA (NY) 2008 (Ithaca MTP) | SC 250 g/L | 0.225 | 3 | BBCH 49 Mature Heads | 0 | 1.42 | 1.355 | 2009/7003324 RCN R080224 |
| | | | | | 0 | 1.29 | | |
| | | | | | 1 | 1.22 | 1.195 | |
| | | | | | 1 | 1.17 | | |
| | | | | | 3 | 0.21 ^a | 0.17 | |
| | | | | | 3 | 0.13 ^a | | |
| | | | | | 7 | 0.05 | 0.03 | |
| | | | | | 7 | 0.1 | | |
| | | | | | 10 | 0.04 | 0.045 | |
| | | | | | 10 | 0.05 | | |
| USA (FL) 2008 (Great Lakes) | SC 250 g/L | 0.225 | 3 | BBCH 49 Mature Heads | 0 | 2.49 | 2.815 | 2009/7003324 RCN R08025 |
| | | | | | 0 | 3.14 | | |
| | | | | | 1 | 2.91 | 2.87 | |
| | | | | | 1 | 2.83 | | |
| | | | | | 3 | 2.23 | 1.925 | |
| | | | | | 3 | 1.62 | | |
| | | | | | 7 | 0.89 | 0.975 | |
| | | | | | 7 | 1.06 | | |
| | | | | | 10 | 0.69 | 0.082 | |
| | | | | | 10 | 0.48 | | |
| USA (WI) 2008 (Fall Green MTO) | SC 250 g/L | 0.225 | 3 | Small medium heads | 0 | 1.77 | 1.420 | 2009/7003324 RCN R080226 |
| | | | | | 0 | 1.07 | | |
| | | | | | 1 | 1.09 | 1.110 | |
| | | | | | 1 | 1.13 | | |
| | | | | | 3 | 0.17 | 0.12 | |
| | | | | | 3 | 0.07 | | |
| | | | | | 7 | 0.08 | 0.08 | |
| | | | | | 7 | 0.08 | | |
| | | | | | 10 | 0.05 | 0.05 | |
| | | | | | 10 | 0.05 | | |
| CA (QC) 2008 (Grand Rapid) | SC 250 g/L | 0.225 | 3 | BBCH 47 (70% of expected head size) | 0 | 2.09 | 2.055 | 2009/7003324 RCN R080227 |
| | | | | | 0 | 2.02 | | |
| | | | | | 1 | 1.47 | 1.885 | |
| | | | | | 1 | 2.30 | | |
| | | | | | 3 | 0.51 | 0.505 | |
| | | | | | 3 | 0.50 | | |
| | | | | | 7 | 0.39 | 0.34 | |
| | | | | | 7 | 0.29 | | |
| | | | | | 10 | 0.20 | 0.175 | |
| | | | | | 10 | 0.15 | | |
| USA (CA) 2008 (Sidewinter) | SC 250 g/L | 0.225 | 3 | Head development | 0 | 4.10 | 4.095 | 2009/7003324 RCN R080228 |
| | | | | | 0 | 4.09 | | |
| | | | | | 1 | 3.77 | 3.495 | |
| | | | | | 1 | 3.22 | | |
| | | | | | 3 | 2.91 | 2.85 | |
| | | | | | 3 | 2.79 | | |
| | | | | | 7 | 3.52 | 3.65 | |
| | | | | | 7 | 3.78 | | |
| | | | | | 10 | 2.83 | 2.425 | |
| | | | | | 10 | 2.02 | | |
| USA (CA) 2008 (Great Lakes 659) | SC 250 g/L | 0.225 | 3 | BBCH 49 Mature Heads | 0 | 2.43 | 2.295 | 2009/7003324 RCN R08029 |
| | | | | | 0 | 2.16 | | |
| | | | | | 1 | 1.17 | 0.93 | |
| | | | | | 1 | 0.69 | | |
| | | | | | 3 | 0.52 | 0.52 | |

| LETTUCE, HEAD Country, year (variety) | Form | Application | | | PHI (days) | Dimethomorph Residues (mg/kg) | | Reference & Comments |
|--|---------------|--------------------------|----|--------------------------------------|--|--|--|----------------------------|
| | | kg ^b ai/ha | no | Growth stage at last treatment | | Heads, Fresh with wrapper leaves | | |
| | | | | | | individual value | average value | |
| | | | | | 3 7 7 10 10 | 0.52 0.11 ^a 0.23 ^a 0.14 0.17 | 0.17 0.155 | |
| USA (CA) 2008 (Tellmark) | SC 250 g/L | 0.225 | 3 | Heading | 0 0 1 1 3 3 7 7 10 10 | 1.61 1.83 1.62 1.23 0.78 0.97 0.20 0.34 0.45 ^a 0.31 ^a | 1.72 1.425 0.875 0.27 0.38 | 2009/7003324 RCN R08030 |
| USA (CA) 2008 (Telluride) | SC 250 g/L | 0.225 | 3 | BBCH 49 Mature Heads | 0 0 1 1 3 3 7 7 10 10 | 1.23 1.19 1.07 1.08 0.84 0.84 0.3 0.24 0.21 0.26 | 1.21 1.075 0.84 0.27 0.235 | 2009/7003324 RCN R08031 |

^a Mean of multiple analysis of the same field sample.

^b Spray volumes of 279–295 L/ha

Table 24 Residues in outdoor lettuce head from foliar application of dimethomorph in trials from the USA

| LETTUCE, HEAD Country, year (variety) | Form | Application | | | PHI (days) | Heads Fresh with wrapper leaf | | Heads Fresh without wrapper leaf | 2001/50033 06 |
|--|-------|--------------------------|----|-----------------------------------|-----------------------------------|---|-------------------------|--|----------------------------|
| | | kg ^a ai/ha | no | Growth stage at last treatment | | individ. value | mean | | |
| Critical GAP USA | SC | 0.19 | 3 | | 0 | | | | |
| USA (CA) 1998 (Winterhaven M.I.) | WP 50 | 0.199 | 7 | Mature Heads | 0 2 2 7 7 14 14 | 4.372 1.091 1.159 0.672 1.033 0.453 0.521 | 1.125 0.853 | 0.441 | 2001/50033 06 CA 113 |
| USA (FL) 1998 (Crispino) | WP 50 | 0.198 | 7 | Beginning to bolt | 0 3 3 7 7 14 14 | 3.634 0.446 0.551 0.198 0.247 0.030 0.018 | 0.499 0.223 0.024 | 0.198 | 2001/50033 06 FL 67 |
| USA (TN) 1998 (cultivar not stated) | WP 50 | 0.203 | 7 | Mature Heads | 0 | 6.447 | | 0.638 | 2001/50033 06 TN 08 |
| USA (CA) 1998 (251) | WP 50 | 0.200 | 7 | Mature Heads | 0 | 1.076 | | 0.080 | 2001/50033 06 |

| LETTUCE, HEAD Country, year (variety) | Form | Application | | | PHI (days) | Heads Fresh with wrapper leaf | | Heads Fresh without wrapper leaf | 2001/50033 06 |
|--|-------|--------------------------|----|--------------------------------------|---------------|----------------------------------|-------|--|------------------|
| | | kg ^a ai/ha | no | Growth stage at last treatment | | individ. value | mean | | |
| Critical GAP USA | SC | 0.19 | 3 | | 0 | | | | |
| USA (CA) 1998 (Salinas, M.I.) | WP 50 | 0.200 | 8 | Mature Heads | 0 | 1.454 | 0.247 | 2001/50033 06 CA 117 | |
| USA (CA) 1998 (Great Lake 659) | WP 50 | 0.200 | 7 | Mature Heads | 0 | 1.675 | 0.046 | 2001/50033 06 CA 118 | |

^a Spray volumes of 285–380 L/ha

Lettuce, leaf

Nine field trials were conducted in USA in during growing season 2008. Dimethomorph was applied three times as a foliar broadcast spray and intervals of 4–8 days. The growth stage for the applications varied from vegetative stage until BBCH 49. Duplicate samples of mature leaves were sampled and analysed with HPLC-MS/MS using Method 575/0. The limit of quantification was 0.01 mg/kg and the mean recovery 75% at fortification levels from 0.01–20.0 mg/kg. The results are summarized in Table 25.

Nine field trials were conducted in the USA during growing season 1998. Dimethomorph was applied seven times as foliar spray at 0.2 kg ai/ha and spray interval of 3–6 days. Duplicate samples of leaves were analysed with GC-ECD using Method FAMS 002-04. The limit of quantification was 0.1 mg/kg and the mean recovery 98 ± 8 fortification level from 0.1–10 mg/kg. The results are summarized in Table 25.

Table 25 Residues in outdoor lettuce from foliar application of dimethomorph in trials from the USA

| LETTUCE Country, year (variety) | Form | Application | | | PHI (days) | Dimethomorph Residues (mg/kg) | | Reference & Comments |
|---------------------------------------|----------------------------|-------------|---|----|---------------|---|------------------|-----------------------------|
| | | kg ai/ha | Growth stage at last treatment | no | | Leaves | | |
| | | | | | | individual value | average value | |
| Critical GAP USA | SC | 0.19 | | 3 | 0 | | | |
| USA (GA) 2008 (Italien Isher) | SC 250 g/L ^a | 0.225 | 7–10 ^c | 3 | 0 | 6.05 5.60 | 5.83 | 2009/7003324 RCN R080215 |
| | | | | | 1 | 1.31 1.25 | 1.28 | |
| | | | | | 3 | 0.46 0.39 | 0.43 | |
| | | | | | 7 | 0.18 0.14 | 0.16 | |
| | | | | | 10 | 0.05 0.07 | 0.60 | |
| | | | | | | | | |
| USA (FL) 2008 (Bibb) | SC 250 g/L ^a | 0.225 | vegetative | 3 | 0 | 4.78 5.60 | 5.19 | 2009/7003324 RCN R080216 |
| | | | | | 1 | 4.48 4.29 | 4.39 | |
| | | | | | 3 | 2.52 2.41 | 1.26 | |
| | | | | | 7 | 0.93 0.55 | 0.74 | |
| | | | | | 10 | 0.34 0.23 | 0.29 | |
| | | | | | | | | |
| USA (WI) 2008 (Black Seeded) | SC 250 g/L ^a | 0.225 | vegetative | 3 | 0 | 10.42 ^c 9.11 ^c | 9.77 | 2009/7003324 RCN R080217 |

Dimethomorph

| LETTUCE Country, year (variety) | Form | Application | | | PHI (days) | Dimethomorph Residues (mg/kg) | | Reference & Comments |
|---------------------------------------|----------------------------|-------------|--|----|------------------------|---|--------------------------------------|-----------------------------|
| | | kg ai/ha | Growth stage at last treatment | no | | Leaves | | |
| | | | | | | individual value | average value | |
| Simpson) | | | | | 1 3 7 10 | 7.38 7.81 1.22 1.17 0.43 0.51 0.20 0.27 | 7.6 1.2 0.47 0.24 | |
| USA (QC) 2008 (Great Leak) | SC 250 g/L ^a | 0.225 | BBCH 49 (typical leaf mass reached) | 3 | 0 1 3 7 10 | 3.69 3.67 0.47 0.41 0.26 0.26 0.16 0.16 0.11 0.11 | 3.68 0.44 0.26 0.16 0.11 | 2009/7003324 RCN R080218 |
| USA (CA) 2008 (Tohema) | SC 250 g/L ^a | 0.225 | mature | 3 | 0 1 3 7 10 | 10.53 9.22 8.68 10.7 8.92 9.81 9.24 10.09 5.94 6.85 | 9.88 9.69 9.37 9.67 6.39 | 2009/7003324 RCN R080219 |
| USA (CA) 2008 (Salad Bowl) | SC 250 g/L ^a | 0.225 | 24 leaves | 3 | 0 1 3 7 10 | 2.15 2.04 3.48 2.44 2.20 3.11 1.09 0.91 0.7 ^c 0.36 ^c | 2.09 2.96 3.16 1.00 0.53 | 2009/7003324 RCN R08020 |
| USA (CA) 2008 (Butter Crunch) | SC 250 g/L ^a | 0.225 | 7–9 leaves | 3 | 0 1 3 7 10 | 3.44 3.29 2.85 2.83 2.43 2.67 1.67 1.35 0.48 0.50 | 3.37 2.84 2.55 1.01 0.49 | 2009/7003324 RCN R08021 |
| USA (CA) 2008 (Sunbelt) | SC 250 g/L ^a | 0.225 | 8–11 leaves | 3 | 0 1 3 7 10 | 4.68 4.53 3.56 3.60 0.47 0.43 0.09 0.08 0.06 0.05 | 4.61 3.58 0.45 0.09 0.55 | 2009/7003324 RCN R08022 |
| USA (OR) 2008 (Red Sails) | SC 250 g/L ^a | 0.225 | BBCH 49 (typical | 3 | 0 | 5.10 5.66 | 5.38 | 2009/7003324 RCN R08023 |

| LETTUCE Country, year (variety) | Form | Application | | | PHI (days) | Dimethomorph Residues (mg/kg) | | Reference & Comments |
|--|--------------------|-------------|---|----|-------------------|--|------------------------------|-------------------------|
| | | kg ai/ha | Growth stage at last treatment | no | | Leaves | | |
| | | | | | | individual value | average value | |
| | | | leaf mass reached) | | 1 3 7 10 | 3.52 3.66 0.95 1.23 0.58 0.57 0.37 0.56 | 3.59 1.09 2.57 0.37 | |
| USA (CA) 1998 (Green Vision) | WP 50 ^b | 0.198 | Mature Leaves | 7 | 0 | 2.7 3.4 | 3.1 | 2001/5003305 CA 25 |
| USA (CA) 1998 (Paris Island, Cos M.I.) | WP 50 ^b | 0.2 | Mature Leaves | 7 | 0 | 6.6 8.0 | 7.3 | 2001/5003305 CA 26 |
| USA (CA) 1998 (Waldman's Green M1) | WP 50 ^b | 0.199 | Mature Leaves | 7 | 0 | 5.6 6.3 | 5.95 | 2001/5003305 CA 114 |
| USA (CA) 1998 (Waldman's Green M1) | WP 50 ^b | 0.201 | Mature Leaves | 7 | 0 | 4.9 5.3 | 5.1 | 2001/5003305 CA 115 |
| USA (FL) 1998 (Romaine) | WP 50 ^b | 0.201 | Beginning to bolt | 7 | 0 | 6.8 7.2 | 7.0 | 2001/5003305 FL 25 |
| USA (NY) 1998 (New Red Fire MTO) | WP 50 ^b | 0.2 | Mature Leaves | 7 | 0 | 3.0 4.1 | 3.55 | 2001/5003305 NY 08 |
| USA (OR) 1998 (Paris Island Cos) | WP 50 ^b | 0.199 | Mature Leaves | 7 | 0 | 3.3 3.5 | 3.4 | 2001/5003305 OR 09 |
| USA (TX) 1998 (Black Seed Simpson) | WP 50 ^b | 0.199 | Vegetativ e | 7 | 0 | 8.6 9.1 | 8.85 | 2001/5003305 TX 08 |
| USA (TX) 1998 (Paris Island Cos) | WP 50 | 0.199 | Mature Leaves | 7 | 0 3 7 12 | 2.6 3.1 2.4 2.5 1.1 1.2 0.16 0.31 | 2.85 2.45 1.15 0.24 | 2001/5003305 TX 26 |

^a Spray volumes of 270–301 L/ha

^b Spray volumes of 285–740 L/ha

^c Mean of multiple analysis of the same field sample.

Spinach

Eight field trials were conducted in the USA in during growing season 2008. Dimethomorph was applied three times as a foliar broadcast spray and spray intervals of 4–8 days. The timing of the applications was from 6–8 leaves until BBCH 49. Duplicate samples of mature leaves were analysed with LC-MS/MS using Method 575/0. The limit of quantification was 0.01 mg/kg and the mean recovery 75% at fortification levels from 0.01–20.0 mg/kg. The results are summarized in Table 26.

Table 26 Residues in outdoor spinach from foliar application of dimethomorph in trials from the USA

| SPINACH Country, year (variety) | Form | Application | | | PHI (days) | Dimethomorph Residues (mg/kg) | | Reference & Comments |
|---------------------------------------|------|-------------|----|--------------|---------------|----------------------------------|--|-------------------------|
| | | kg | no | Growth stage | | Leaves | | |

Dimethomorph

| | | ai/ha | | at last treatment | | individual value | average value | |
|-----------------------------|----------------------------|-------|---|--------------------------|--|--|--|--------------------------------|
| Critical GAP USA | SC | 0.19 | 3 | | 0 | | | |
| USA (NY) 2008 (Melody) | SC 250 g/L ^b | 0.225 | 3 | plants close to maturity | 0 0 1 1 3 3 7 7 10 10 | 6.01 5.8 1.24 1.19 0.65 0.68 0.38 0.39 0.16 0.19 | 5.91 1.22 0.67 0.39 0.18 | 2009/7003324 RCN R080232 |
| USA (GA) 2008 (Space FI) | SC 250 g/L ^b | 0.225 | 3 | 9–16 leaves | 0 0 1 1 3 3 7 7 10 10 | 8.59 7.83 6.13 7.22 2.25 ^a 1.91 ^a 0.02 0.02 < 0.01 < 0.01 | 8.21 6.68 2.44 0.02 < 0.01 | 2009/7003324 RCN R08033 |
| USA (WI) 2008 (Unipack 151) | SC 250 g/L ^b | 0.225 | 3 | 15–20 cm | 0 0 1 1 3 3 7 7 10 10 | 11.04 11.47 8.43 8.10 3.11 3.17 0.52 0.59 0.20 0.21 | 11.26 8.27 3.14 0.56 0.21 | 2009/7003324 RCN R080234 |
| USA (QC) 2008 (Tyee) | SC 250 g/L ^b | 0.225 | 3 | BBCH 51 | 0 0 1 1 3 3 7 7 10 10 | 5.19 4.20 2.17 2.13 0.67 0.76 0.21 0.23 0.08 0.09 | 4.69 2.15 0.72 0.22 0.09 | 2009/7003324 RCN R080235 |
| USA (TX) 2008 (Siena) | SC 250 g/L ^b | 0.225 | 3 | BBCH 49 | 0 0 1 1 3 3 7 7 10 10 | 9.32 7.37 7.21 6.01 6.78 6.34 3.98 3.89 2.02 2.24 | 8.35 6.61 6.56 3.94 2.13 | 2009/7003324 RCN R080236 |
| USA (ID) 2008 (Unipack 151) | SC 250 g/L ^b | 0.225 | 3 | BBCH 48 | 0 0 1 1 3 3 7 7 10 10 | 8.47 8.48 7.39 7.19 6.28 6.36 1.25 1.33 0.23 0.20 | 8.48 7.29 6.32 1.29 0.22 | 2009/7003324 RCN R08037 |
| USA (CA) 2008 | SC | 0.225 | 3 | 30.5 cm | 0 | 9.67 | 10.18 | 2009/7003324 |

| SPINACH Country, year (variety) | Form | Application | | | PHI (days) | Dimethomorph Residues (mg/kg) | | Reference & Comments |
|---------------------------------------|----------------------------|-------------|----|--------------------------------------|--|--|--------------------------------------|----------------------------|
| | | kg ai/ha | no | Growth stage at last treatment | | Leaves | | |
| | | | | | | individual value | average value | |
| (Crocodile) | 250 g/L ^b | | | | 0 1 1 3 3 7 7 10 10 | 10.69 9.72 7.55 8.44 9.71 8.30 9.17 3.43 3.13 | 8.64 9.08 8.74 3.28 | RCN R08038 |
| USA (OR) 2008 (Avenger) | SC 250 g/L ^b | 0.225 | 3 | BBCH 49 | 0 0 1 1 3 3 7 7 10 10 | 5.97 4.63 0.74 0.80 0.69 0.56 0.10 0.10 0.07 0.06 | 5.30 0.77 0.63 0.10 0.07 | 2009/7003324 RCN R08039 |

^a Mean of multiple analysis of the same field sample.

^b Spray volumes of 274–275 L/ha.

Taro, leaf

Three field trials on taro were conducted in Hawai during growing season 2000. Dimethomorph was applied seven times as a foliar spray (spray interval of 7 to 8 days) or drip irrigation.

Duplicate samples of leaves were analysed using GC-ECD and Method FAMS 002-04. The limit of quantification was 0.01 mg/kg and the recovery 76–119% at fortification level 0.01–10 mg/kg for leaves. The results are summarized in Table 27.

Table 27 Residues in outdoor Taro from foliar application of dimethomorph in trials from the USA

| TARO Country, year (variety) | Form | Application | | | PHI (days) | Dimethomorph Residues (mg/kg) | Reference & Comments |
|--|-------------|-----------------------|----|--------------------------------------|---------------|------------------------------------|---------------------------------------|
| | | kg ai/ha ^a | no | Growth stage at last treatment | | | |
| Critical GAP USA, except California | | 0.19 | 5 | | 7 | | |
| USA (HI) 2000 (Chinese) | WP 500 g | 0.225 ^b | 7 | vegetative, 1.83 m | 7 | 3.65 5.40 mean 4.525 | 2003/7010215 IR-4 PR 07335 H109 |
| USA (HI) 2000 (Chinese - 'Bun Long') | WP 500 g | 0.225 | 7 | vegetative 1.53 m | 7 | 1.78 1.49 mean 1.63 | 2003/7010215 IR-4 PR 07335 H110 |
| USA (HI) 2000 (Chinese - 'Bun Long') | WP 500 g | 0.225 | 7 | vegetative 1.83 m | 0 28 | 0.633 2.24 mean 1.437 | 2003/7010215 IR-4 PR 07335 H11 |

^a Spray volumes of 1400–1900 L/ha

^b Drip irrigation

*Legume vegetables**Pea, Shelled, (succulent seed)*

Two field trials were conducted in France and Germany during the growing season of 2005. Dimethomorph was applied as foliar broadcast application two times 29 and 21± 1 day before harvest. Samples of peas were analysed by LC-MS/MS using Method 575/0. The limit of quantification was 0.01 mg/kg and recovery 79–89% for peas with pods and 83–96% for rest of plants without roots at fortification level 0.01–10 mg/kg. The results are summarized in Table 28.

During the growing season of 2006 ten field trials were conducted on green peas in Spain, France (north and south), Germany, the Netherlands and Denmark. Dimethomorph was applied as foliar broadcast application two times 29 and 21± 1 day before harvest. Samples were analysed using LC-MS/MS and Method 575/0. The limit of quantification was 0.01 mg/kg and recovery 83–95% for peas with pods and 80–97% for rest of plants without roots at fortification level 0.01–10 mg/kg. The results are summarized in Table 28.

Table 28 Residues in Green Peas from foliar application of dimethomorph in field trials in Europe

| GREEN PEAS Country, year (variety) | Form | Application | | | PHI (days) | Commodity | Residues (mg/kg) | Reference & Comments |
|--|---------------|-----------------------|----|---|---------------|----------------------------|---------------------|------------------------------|
| | | kg ai/ha ^a | no | Growth stage at last treatment BBCH | | | | |
| Critical GAP France | | 0.18 | 2 | | 21 | | | |
| France, 2005/6 (Barely) | WG 90 g/kg | 0.180 | 2 | 71 | 0 | peas with pods | 0.615 | 2006/1032765 05 CL FR P37 |
| | | | | | 0 | rest of plant w/o roots | 7.032 | |
| | | | | | 13 | fresh peas w/o pods | < 0.01 | |
| | | | | | 13 | rest of plant w/o roots | 5.167 | |
| | | | | | 20 | fresh peas w/o pods | < 0.01 | |
| | | | | | 20 | rest of plant w/o pods | 3.583 | |
| | | | | | 28 | fresh peas w/o roots | 0.023 | |
| | | | | | 28 | rest of plant w/o pods | 4.973 | |
| Germany 2005/6 (Trompet) | WG 90 g/kg | 0.180 | 2 | 67 | 0 | peas with pods | 1.175 | 2006/1032765 AC/05/100 |
| | | | | | 0 | rest of plant w/o pods | 4.186 | |
| | | | | | 14 | fresh peas w/o pods | < 0.01 | |
| | | | | | 14 | rest of plant w/o roots | 0.511 | |
| | | | | | 20 | fresh peas w/o pods | < 0.01 | |
| | | | | | 20 | rest of plant w/o roots | 1.060 | |

| GREEN PEAS Country, year (variety) | Form | Application | | | PHI (days) | Commodity | Residues (mg/kg) | Reference & Comments |
|--|---------------|-----------------------|----|---|---------------|--|---------------------|---------------------------|
| | | kg ai/ha ^a | no | Growth stage at last treatment BBCH | | | | |
| | | | | | | | | |
| | | | | | 27 | fresh peas w/o pods | < 0.01 | |
| | | | | | 27 | rest of plant w/o roots | 1.884 | |
| Spain, 2006 (Jumbo) | WG 90 g/kg | 0.18 | 2 | 73 | 0 | peas with pods | 0.568 | 2007/1005061 06ES/094R |
| | | | | | 0 | rest of plant w/o roots w/o pods | 4,95 | |
| | | | | | 13 | fresh peas w/o pods | < 0.01 | |
| | | | | | 13 | rest of plant w/o roots | 2,96 | |
| | | | | | 20 | fresh peas w/o pods | < 0.01 | |
| | | | | | 20 | rest of plant w/o roots | 2.03 | |
| | | | | | 28 | fresh peas w/o pods | < 0.01 | |
| | | | | | 28 | rest of plant w/o roots | 5.45 | |
| Spain, 2006 (Argona) | WG 90 g/kg | 0.18 | 2 | 73 | 0 | peas with pods | 0.324 | 2007/1005061 06ES/095R |
| | | | | | 0 | rest of plant w/o roots w/o pods | 3.35 | |
| | | | | | 14 | fresh peas w/o pods | < 0.01 | |
| | | | | | 14 | rest of plant w/o roots | 0.575 | |
| | | | | | 21 | fresh peas w/o pods | < 0.01 | |
| | | | | | 21 | rest of plant w/o roots | 0.620 | |
| | | | | | 28 | fresh peas w/o pods | < 0.01 | |
| | | | | | 28 | rest of plant w/o roots | 1.57 | |
| France, 2006 (Frediro) | WG 90 g/kg | 0.18 | 2 | 75 | 0 | peas with pods | 0.447 | 2007/1005061 06FR/096R |
| | | | | | 0 | rest of plant w/o roots w/o pods | 3.65 | |
| | | | | | 14 | fresh peas w/o pods | < 0.01 | |
| | | | | | 14 | rest of plant w/o roots | 0.368 | |
| | | | | | 21 | fresh peas w/o pods | < 0.01 | |
| | | | | | 21 | rest of plant w/o roots | 0.311 | |
| | | | | | 28 | fresh peas w/o pods | < 0.01 | |
| | | | | | 28 | rest of plant | 0.588 | |

Dimethomorph

| GREEN PEAS Country, year (variety) | Form | Application | | | PHI (days) | Commodity | Residues (mg/kg) | Reference & Comments |
|---|---------------|-----------------------|----|---|---------------|--|---------------------|---------------------------|
| | | kg ai/ha ^a | no | Growth stage at last treatment BBCH | | | | |
| France, 2006 (Frediro) | WG 90 g/kg | 0.18 | 2 | 75 | | w/o roots | | 2007/1005061 06FR/097R |
| | | | | | 0 | peas with pods | 0.358 | |
| | | | | | 0 | rest of plant w/o roots w/o pods | 2.86 | |
| | | | | | 14 | fresh peas w/o pods | < 0.01 | |
| | | | | | 14 | rest of plant w/o roots | 0.836 | |
| | | | | | 21 | fresh peas with pods | < 0.01 | |
| | | | | | 21 | rest of plant w/o roots | 1.59 | |
| | | | | | 28 | fresh peas w/o pods | < 0.01 | |
| France, 2006 (Cepia) | WG 90 g/kg | 0.18 | 2 | 71 | | peas with pods | 0.505 | 2007/1005061 06FR/098R |
| | | | | | 0 | rest of plant w/o pods w/o roots | 6.130 | |
| | | | | | 15 | fresh peas w/o pods | < 0.01 | |
| | | | | | 15 | rest of plant w/o roots | 0.0929 | |
| | | | | | 21 | fresh peas w/o pods | < 0.01 | |
| | | | | | 21 | rest of plant w/o roots | 1.521 | |
| | | | | | 27 | fresh peas w/o pods | < 0.01 | |
| | | | | | 27 | rest of plant w/o roots | 2.400 | |
| Germany, 2006 (Wunder von Kelvedon) | WG 90 g/kg | 0.18 | 2 | 73 | | peas with pods | 0.337 | 2007/1005061 06FR/099R |
| | | | | | 0 | rest of plant w/o pods w/o roots | 4.28 | |
| | | | | | 15 | fresh peas w/o pods | < 0.01 | |
| | | | | | 15 | rest of plant w/o roots | 4.79 | |
| | | | | | 20 | fresh peas w/o pods | 0.063 | |
| | | | | | 20 | rest of plant w/o roots | 4.18 | |
| | | | | | 27 | fresh peas w/o pods | < 0.041 | |
| | | | | | 27 | rest of plant w/o roots | 4.60 | |
| The Netherlands, 2006 | WG 90 g/kg | 0.18 | 2 | 73 | 0 | peas with pods | 0.351 | 2007/1005061 06FR/100R |

| GREEN PEAS Country, year (variety) | Form | Application | | | PHI (days) | Commodity | Residues (mg/kg) | Reference & Comments |
|--|--|-----------------------|----|---|---|--|---------------------|-------------------------|
| | | kg ai/ha ^a | no | Growth stage at last treatment BBCH | | | | |
| (Wunder von Kelvedon) | | | | | 0 | rest of plant w/o pods w/o roots | 3.39 | |
| | | | | | 13 | fresh peas with pods | 0.015 | |
| | | | | | 13 | rest of plant w/o roots | 8.09 | |
| | | | | | 20 | fresh peas w/o pods | 0.044 | |
| | | | | | 20 | rest of plant w/o roots | 9.53 | |
| | | | | | 27 | fresh peas w/o pods | 0.025 | |
| | | | | | 27 | rest of plant w/o roots | 9.58 | |
| | | | | | Denmark, 2006 (Progress no 9 Lot ZP1065) | WG 90 g/kg | 0.18 | |
| 0 | rest of plant w/o pods w/o roots | 3.52 | | | | | | |
| 13 | fresh peas with pods | < 0.01 | | | | | | |
| 13 | rest of plant w/o roots | 0.242 | | | | | | |
| 22 | fresh peas w/o pods | < 0.01 | | | | | | |
| 22 | rest of plant w/o roots | 0.353 | | | | | | |
| 28 | fresh peas w/o pods | < 0.01 | | | | | | |
| 28 | rest of plant w/o roots | 0.420 | | | | | | |

^a Spray volumes of 285–300 L/ha.

Vining peas

During the growing season of 2008 four field trials were conducted on vining peas in Northern France, Germany and the Netherlands. Dimethomorph was applied as a foliar broad cast application two times 29 ± 1 and 21 ± 1 days before harvest. Samples (peas with pods and rest of plant w/o roots) were collected directly after the second application. Samples of pods and seed were taken at and 20 ± 1 day after the last treatment. Pea seeds were analysed using LC-MS/MS and the Method 535/1. The limit of quantification was 0.01 mg/kg and the recovery 72–110% for the different samples (n2) at fortification levels 0.01–10 mg/kg. The results are summarized in Table 29.

Table 29 Residues in Vining peas from foliar application of dimethomorph in field trials from Europe

| VINING PEAS Country, year (variety) | Form | Application | | | PHI (days) | Commodity | Residues (mg/kg) | Reference & Comments |
|---|---------------|-----------------------|----|---|---------------|--------------------------------|---------------------|---------------------------|
| | | kg ai/ha ^a | no | Growth stage at last treatment BBCH | | | | |
| Critical GAP France | | 0.18 | 2 | | 21 | | | |
| France, 2008 (Cariboue) | WG 90 g/kg | 0.180 0.187 | 2 | 62 71 | 0 | peas with pods | 0.768 | 2009/1069170 A8096 BM1 |
| | | | | | 0 | rest of plant without roots | 3.416 | |
| | | | | | 20 | seeds (manual) | < 0.01 | |
| | | | | | 20 | Pods | 0.021 | |
| | | | | | 20 | seeds (mechanical) | < 0.01 | |
| France, 2008 (Louvette) | WG 90 g/kg | 0.207 0.208 | 2 | 74 75 | 0 | peas with pods | 0.983 | 2009/1069170 A8096 OB1 |
| | | | | | 0 | rest of plant without roots | 9.327 | |
| | | | | | 20 | seeds (manual) | 0.016 | |
| | | | | | 20 | Pods | 0.237 | |
| | | | | | 20 | seeds (mechanical) | 0.071 | |
| Germany, 2008 (Esprit) | WG 90 g/kg | 0.196 0.205 | 2 | 73 75 | 0 | peas with pods | 0.372 | 2009/1069170 A8096 DE1 |
| | | | | | 0 | rest of plant without roots | 2.323 | |
| | | | | | 21 | seeds (manual) | < 0.01 | |
| | | | | | 21 | Pods | < 0.01 | |
| | | | | | 21 | seeds (mechanical) | < 0.01 | |
| The Netherlands, 2008 (Arlette) | WG 90 g/kg | 0.202 0.202 | 2 | 73 75 | 0 | peas with pods | 0.506 | 2009/1069170 A8096 NL1 |
| | | | | | 0 | rest of plant without roots | 3.234 | |
| | | | | | 22 | seeds (manual) | < 0.01 | |
| | | | | | 22 | Pods | 0.011 | |
| | | | | | 22 | seeds (mechanical) | < 0.01 | |

^a Spray volumes of 200 L/ha

Lima Beans

During the 2002 and 2003 growing season seven field trials on Lima beans were conducted in the USA. Dimethomorph was applied as a foliar broad cast spray seven times with an interval of 5–11 days. Duplicate samples were analysed using GC-MSD and the Method FAMS 002-04 approved for grapes the 2007 Meeting. The limit of quantification was 0.01 mg/kg and the recovery 71–123% for the different samples at fortification levels 0.01–1 mg/kg. The results are summarized in Table 27.

During the growing season 2010 three field trials on Lima Beans was conducted in the USA. Dimethomorph was applied as foliar broad cast spray five to six times with an interval of 6–8 days. Duplicate samples were collected (pods) at the same day as the last application and frozen within 30 minutes. The lima beans were analysed with GC-MSD using Method FAMS 002-04. The limit of quantification was 0.01 mg/kg and the recovery 85–102% for the different samples at fortification levels 0.01–1 mg/kg. The results are summarized in Table 30.

Table 30 Residues in Lima beans from foliar application of dimethomorph in field trials from the USA

| LIMA BEANS Country, year (variety) | Form | Application | | | PHI (days) | Commodity succulent seed without pod | Residues (mg/kg) | | Reference & Comments |
|--|----------------------------|-----------------------|----|---|---------------|--|------------------|--------|-------------------------|
| | | kg ai/ha ^a | no | Growth stage at last treatment | | | ind. value | mean | |
| Critical GAP USA | | 0.19 | 5 | | 0 | | | | |
| USA, 2002/3 (GA) (Cangreen) | WP 50% | 0.225 | 7 | mature | 0 | bean mechanical | 0.48 | 0.465 | 2007/7016820 GA10 |
| | | | | | 0 | | 0.45 | | |
| USA, 2002/3 (GA) (Henderson Bush) | WP 50% | 0.225 | 8 | fruiting | 0 | bean mechanical | 0.03 | 0.03 | 2007/7016820 GA11 |
| | | | | | 0 | | 0.03 | | |
| USA, 2002/3 (GA) (Jackson Wonder) | WP 50% | 0.225 | 7 | mature | 0 | bean mechanical | 0.09 | 0.1 | 2007/7016820 GA12 |
| | | | | | 0 | | 0.11 | | |
| | | | | | 3 | bean mechanical | 0.04 | 0.045 | |
| | | | | | 3 | | 0.05 | | |
| | | | | | 5 | bean mechanical | 0.01 | 0.01 | |
| | | | | | 5 | | 0.01 | | |
| | | | | | 11 | bean mechanical | 0.02 | 0.02 | |
| | | | | | 11 | | 0.02 | | |
| USA, 2002/3 (MD) (Fordhook 242) | WP 50% | 0.225 | 7 | mature | 0 | bean mechanical | 0.21 | 0.21 | 2007/7016820 MD 14 |
| | | | | | 0 | | 0.21 | | |
| USA, 2003 (MD) (Burpee Improved Bush) | WP 50% | 0.225 | 7 | mature | 0 | bean mechanical | 0.03 | 0.03 | 2007/7016820 MD 03 |
| | | | | | 0 | | 0.03 | | |
| USA, 2003 (NJ) (Bridgeton) | WP 50% | 0.225 | 7 | fruiting | 0 | bean mechanical | 0.05 | 0.05 | 2007/7016820 NJ07 |
| | | | | | 0 | | 0.05 | | |
| USA, 2002/3 (MD) (Improved Kingston) | WP 50% | 0.225 | 7 | fruiting | 0 | bean manual | 0.03 | 0.03 | 2007/7016820 WI 33 |
| | | | | | 0 | | 0.03 | | |
| USA, 2010 (CA) (Luna Baby Lima Beans) | WP ^b 50% | 0.225 | 5 | Pods Setting | 0 | bean manual | 0.0245 | 0.0257 | 2013/1335899 CA 140 |
| | SC ^b 500 g/L | | 5 | Pods Setting | 0 | bean manual | 0.0199 | | |
| | | | | | | | 0.0236 | | |
| USA, 2010 (MD) (Eastland) | WP ^b 50% | 0.225 ^b | 6 | Pods filling out, Some Mature | 0 | bean manual | 0.0329 | 0.0403 | 2013/1335899 MD19 |
| | SC ^b 500 g/L | | 6 | Pods filling out, Some Mature | 0 | bean manual | 0.0476 | | |
| | | | | | | | 0.0585 | | |
| USA, 2010 (SC) (Fordhook # 242) | WP ^b 50% | 0.225 ^b | 5 | Fruiting | 0 | bean manual | 0.0954 | 0.0778 | 2013/1335899 SC18 |
| | SC ^b 500 g/L | | 5 | Fruiting | 0 | bean manual | 0.0602 | | |
| | | | | | | | 0.0587 | | |
| | | | | | | 0.0659 | 0.0623 | | |

^a Spray volume of 284–488 L/ha^b Adjuvant used

*Root and vegetable crop**Ginseng*

Four outdoor trials were conducted in the USA during growing season 2004. Dimethomorph was applied seven times from blooming until berries dropping. In three trials dimethomorph was applied as a broadcast foliar spray and in one trial via drip application.

Duplicate samples were analysed using Method FAMS 073-03 to measure dimethomorph residues in ginseng roots. The limit of quantification of this method was 0.08 mg/kg and the mean recovery was 87.3–96.9% at fortification levels of 0.05–5 mg/kg. The results are summarized in Table 31.

Table 31 Residues in outdoor Ginseng from foliar application of dimethomorph in trials from the USA

| Ginseng Country, year (variety) | Form | Application | | | PHI (days) | Commodity | Residues (mg/kg) | | Reference & Comments |
|---|------------------------|--------------------|----|---|---------------|-----------|------------------|------|-------------------------|
| | | kg ai/ha | no | Growth stage at last treatment | | | ind. value | mean | |
| Critical GAP USA | | 0.19 | 5 | | 14 | | | | |
| USA, 2004 (MI) (American Ginseng) | WP ^a 50% | 0.270 ^a | 7 | Fruiting | 14 | root | 0.6 0.62 | 0.61 | 2007/1068765 MI 123 |
| USA, 2004 (WI) (American Ginseng) | WP 50% | 0.225 ^a | 7 | Red berries | 13 | root | 0.43 0.41 | 0.42 | 2007/1068765 WI 25 |
| USA, 2004 (WI) (American Ginseng) | WP 50% | 0.225 ^a | 7 | Berries dropping | 14 | root | 0.28 0.27 | 0.28 | 2007/1068765 WI 29 |
| USA, 2004 (WI) (American Ginseng) | WP 50% | 0.225 ^a | 7 | Berries dropping | 15 | root | 0.28 0.29 | 0.28 | 2007/1068765 WI 30 |

^a Drip irrigation

*Stalk and stem vegetable**Globe artichoke*

Ten outdoor trials on globe artichoke from Germany, northern and southern France, the Netherlands, Spain and Italy conducted during the growing season 2006 and 2007. Dimethomorph was applied three times by foliar broadcast spray in intervals of 7 ± 1 day. The timing of the applications was from 17 until $3 \pm$ days before harvest.

Samples (artichoke heads) were analysed by HPLC-MS/MS using method 575/0. The limit of quantification of this method was 0.01 mg/kg and the recovery was 70–110% at fortification levels of 0.01 and 1.0 mg/kg. The results are summarized in Table 32.

Table 32 Residues in Artichoke from foliar application of dimethomorph in outdoor trials from Europe

| ARTICHOKE (VS 0620) Country, year (variety) | Form | Application | | | PHI (days) | Commodity | Residues (mg/kg) | Reference & Comments |
|--|----------------------|-----------------------|----|---|---------------|-----------|---------------------|----------------------------|
| | | kg ai/ha ^a | no | Growth stage at last treatment | | | | |
| Critical GAP France, Italy | | 0.18 | 3 | | 3 | | | |
| N France, 2006 (Camus) | EC 72 g/L + py | 0.18 | 3 | 3 days before harvest | 0 | heads | 0.13 | 2008/1068911 A6025 BM1 |
| | | | | | 3 | | 0.26 | |
| | | | | | 8 | | 0.06 | |
| Netherlands, 2006 (Concerto) | EC 72 g/L + py | 0.18 | 3 | 3 days before harvest | 0 | heads | 0.58 | 2008/1068911 A6025 NL1 |
| | | | | | 3 | | 0.75 | |
| | | | | | 7 | | 0.69 | |
| Germany, 2006 (Imperial Star) | EC 72 g/L + py | 0.18 | 3 | 3 days before harvest | 0 | heads | 0.42 | 2008/1068911 A6025 HA1 |
| | | | | | 3 | | 0.55 | |
| | | | | | 8 | | 0.2 | |
| N France, 2007 (Camus) | EC 72 g/L + py | 0.18 | 3 | 4 days before harvest | 0 | heads | 0.22 | 2009/1013323 A7037 BM1 |
| | | | | | 4 | | 0.11 | |
| | | | | | 7 | | 0.08 | |
| Germany, 2007 (Green Globe) | EC 72 g/L + py | 0.18 | 3 | 3 days before harvest | 0 | heads | 0.36 | 2009/1013323 A7037 HA1 |
| | | | | | 3 | | 0.24 | |
| | | | | | 7 | | 0.09 | |
| Italy, 2006 (Spinosiso, DI Albenga) | EC 72 g/L + py | 0.18 | 3 | 4 days before harvest | 0 | heads | 0.10 | 2008/1068911 A6025 IT1 |
| | | | | | 4 | | 0.06 | |
| | | | | | 7 | | 0.04 | |
| S France, 2006 (Makau) | EC 72 g/L + py | 0.18 | 3 | 3 days before harvest | 0 | heads | 0.32 | 2008/1068911 A6025 TL 1 |
| | | | | | 3 | | 0.08 | |
| | | | | | 8 | | 0.09 | |
| Italy, 2007 (Brindisino) | EC 72 g/L + py | 0.18 | 3 | 3 days before harvest | 0 | heads | 1.27 | 2009/1013323 A7037 IT1 |
| | | | | | 3 | | 1.14 | |
| | | | | | 7 | | 0.79 | |
| S France, 2006 (Makau) | EC 72 g/L + py | 0.18 | 3 | 3 days before harvest | 0 | heads | 0.42 | 2009/1013323 A7037 TL1 |
| | | | | | 3 | | 0.32 | |
| | | | | | 7 | | 0.15 | |
| Spain, 2007 (Prat) | EC 72 g/L + py | 0.18 | 3 | 3 days before harvest | 0 | heads | 0.31 | 2009/1013323 A7037 ES2 |
| | | | | | 4 | | 0.14 | |
| | | | | | 7 | | 0.10 | |

^a Spray volumes of 400 L/ha

Celery

Nine outdoor residue decline trials on celery from the USA and Canada performed during growing season 2008. Dimethomorph was applied three times as a foliar broadcast spray with and spray intervals of 4–6 days. The timing of the applications was from vegetative stage (35–40 cm) until stalk elongation.

Duplicate samples were analysed by HPLC-MS/MS using Method 575/0. The limit of quantification was 0.01 mg/kg and the mean recovery $78 \pm 8\%$ at fortification levels from 0.01–10.0 mg/kg. The results are summarized in Table 33.

Table 33 Residues in celery from foliar application of dimethomorph in outdoor trials from the USA and Canada

| CELERY Country, year (variety) | Form | Application | | | PHI (days) | Dimethomorph Residues (mg/kg) | | Reference & Comments |
|--------------------------------------|---------------|--------------------------|----|--------------------------------------|---------------|----------------------------------|------------------|----------------------------|
| | | kg ^a ai/ha | No | Growth stage at last treatment | | Leaf stalk | | |
| | | | | | | individual value | average value | |
| Critical GAP USA | | 0.21 | 3 | | 0 | | | |
| USA (FL), 2008 (AB52) | SC 225 g/L | 0.225 | 3 | vegetative 14– 16” | 0 | 1.25 1.28 | 1.265 | 2009/7003324 RCN R08240 |
| | | | | | 1 | 0.85 1.11 | 0.98 | |
| | | | | | 3 | 0.25 0.27 | 0.26 | |
| | | | | | 7 | 0.24 0.23 | 0.235 | |
| | | | | | 10 | 0.15 0.15 | 0.15 | |
| USA (FL), 2008 (Utah) | SC 225 g/L | 0.225 | 3 | BBCH 49 | 0 | 5.8 5.27 | 5.535 | 2009/7003324 RCN R08241 |
| | | | | | 1 | 5.35 5.19 | 5.27 | |
| | | | | | 3 | 1.02 0.99 | 1.01 | |
| | | | | | 7 | 1.07 1.01 | 1.04 | |
| | | | | | 10 | 0.92 0.89 | 0.905 | |
| USA (WI), 2008 (Tango) | SC 225 g/L | 0.225 | 3 | BBCH 46 | 0 | 3.12 2.8 | 2.96 | 2009/7003324 RCN R08242 |
| | | | | | 1 | 3.34 3.19 | 3.265 | |
| | | | | | 3 | 2.09 1.83 | 1.96 | |
| | | | | | 7 | 0.51 0.58 | 0.545 | |
| | | | | | 10 | 0.34 0.37 | 0.355 | |
| Canada (QC), 2008 (Victoria) | SC 225 g/L | 0.225 | 3 | BBCH 49 | 0 | 1.47 1.62 | 1.545 | 2009/7003324 RCN R08243 |
| | | | | | 1 | 1.03 1.03 | 1.03 | |
| | | | | | 3 | 0.85 0.87 | 0.86 | |
| | | | | | 7 | 0.06 0.06 | 0.06 | |
| | | | | | 10 | 0.06 0.05* | 0.055 | |
| Canada (QC), 2008 (XP266) | SC 225 g/L | 0.225 | 3 | BBCH 49 | 0 | 2.1 1.6 | 1.85 | 2009/7003324 RCN R08244 |
| | | | | | 1 | 1.26 1.17 | 1.215 | |
| | | | | | 3 | 1.15 1.1 | 1.125 | |
| | | | | | 7 | 0.09 0.08 | 0.085 | |
| | | | | | 10 | 0.07 0.07 | 0.07 | |
| USA (CA), 2008 (Mission) | SC 225 g/L | 0.225 | 3 | BBCH 49 | 0 | 7.6 8.82 | 8.21 | 2009/7003324 RCN R08245 |
| | | | | | 1 | 7.89 7.16 | 7.525 | |

| CELERY Country, year (variety) | Form | Application | | | PHI (days) | Dimethomorph Residues (mg/kg) | | Reference & Comments |
|--------------------------------------|----------------|--------------------------|----|--------------------------------------|---------------|----------------------------------|------------------|----------------------------|
| | | kg ^a ai/ha | No | Growth stage at last treatment | | Leaf stalk | | |
| | | | | | | individual value | average value | |
| | | | | | 3 | 5.12 5.05 | 5.085 | |
| | | | | | 7 | 4.88 5.37 | 5.125 | |
| | | | | | 10 | 3.32 2.3 | 2.81 | |
| USA (CA), 2008 (Mission) | SC 225 g/L | 0.225 | 3 | BBCH 49 | 0 | 3.99 4.05 | 4.02 | 2009/7003324 RCN R08246 |
| | | | | | 1 | 1.56 1.15 | 1.355 | |
| | | | | | 3 | 1.04 1.17 | 1.105 | |
| | | | | | 7 | 0.61 0.42 | 0.515 | |
| | | | | | 10 | 0.51 0.45 | 0.48 | |
| USA (CA), 2008 (G15) | SC 225 g/L | 0.230 | 3 | BBCH 49 | 0 | 1.97 1.84 | 1.905 | 2009/7003324 RCN R08247 |
| | | | | | 1 | 1.8 1.76 | 1.78 | |
| | | | | | 3 | 1.05 1.22 | 1.135 | |
| | | | | | 7 | 0.16 0.13 | 0.145 | |
| | | | | | 10 | 0.05 0.06 | 0.055 | |
| USA (CA), 2008 (Sinora) | SC 2025 g/L | 0.225 | 3 | Stalk elongation | 0 | 2.39 2.48 | 2.435 | 2009/7003324 RCN R08248 |
| | | | | | 1 | 1.76 2.03 | 1.895 | |
| | | | | | 3 | 1.45 1.56 | 1.505 | |
| | | | | | 7 | 0.25 0.41 | 0.33 | |
| | | | | | 10 | 0.34 0.52 | 0.43 | |

^a Spray volumes of 277–301 L/ha

Taro corm (root)

Three field trials on taro were conducted in Hawaii during growing season 2000. Meeting. Dimethomorph was applied seven times as a foliar spray or drip irrigation. Dimethomorph was applied with a spray interval of 7 to 8 days to the vegetative stage (growth height 1.2 m to 1.7 m).

The cormes were analysed using GC-ECD and Method FAMS 002-04. The limit of quantification was 0.01 mg/kg and the recovery 76–119% at fortification level 0.01–10 mg/kg for leaves. The results are summarized in Table 34.

Table 34 Residues in outdoor Taro corm from foliar application of dimethomorph in trials from USA

| TARO Country, year (variety) | Form | Application | | | PHI (days) | Dimethomorph Residues (mg/kg) | Reference & Comments |
|--|------|-----------------------|----|-----------------------------------|---------------|----------------------------------|-------------------------|
| | | kg ai/ha ^a | no | Growth stage at last treatment | | Corms | |
| Critical GAP USA, except California | | 0.19 | 5 | | 30 | | |
| USA (HI) 2000 | WP | 0.225 ^b | 7 | vegetative, | 28 | 0.0494 | 2003/7010215 |

| TARO Country, year (variety) | Form | Application | | | PHI (days) | Dimethomorph Residues (mg/kg) | Reference & Comments |
|--|-------------|-----------------------|----|-----------------------------------|---------------|--------------------------------------|---------------------------------------|
| | | kg ai/ha ^a | no | Growth stage at last treatment | | Corms | |
| (Chinese) | 500 g | | | 1.83 m | | 0.0464 mean 0.0479 | IR-4 PR 07335 H109 |
| USA (HI) 2000 (Chinese - 'Bun Long') | WP 500 g | 0.225 | 7 | vegetative 1.53 m | 28 | 0.343 0.195 mean 0.269 | 2003/7010215 IR-4 PR 07335 H110 |
| USA (HI) 2000 (Chinese - 'Bun Long') | WP 500 g | 0.225 | 7 | vegetative 1.83 m | 28 | 0.0523 0.0477 mean 0.05 | 2003/7010215 IR-4 PR 07335 H11 |

^a Spray volumes of 1400–1900 L/ha

^b Drip irrigation

Fate of residues in storage and processing

Oranges

During the 2011 growing season four independent field trials were conducted in oranges (sweet) in Spain to determine the potential for concentration of residues in juice, marmalade, pulp, pomace, pulp and oil after processing to these commodities. Treated plots received two foliar applications of dimethomorph (DC formulation) at a rate of 1.22 kg ai/ha 28 and 14 days before harvest. Samples of whole fruits were taken on the day of the last application (BBCH 83–85) and 14 ± 1 day later (BBCH 89).

The processing of oranges was conducted with samples taken at the last sampling using simulated commercial processing procedures according to the flowchart below. During processing, nine different fractions of orange products or intermediates were collected for analysis specifically; juice, wet pomace, dried pomace, marmalade, peel after oil extraction, pulp, peel, dried pulp and oil.

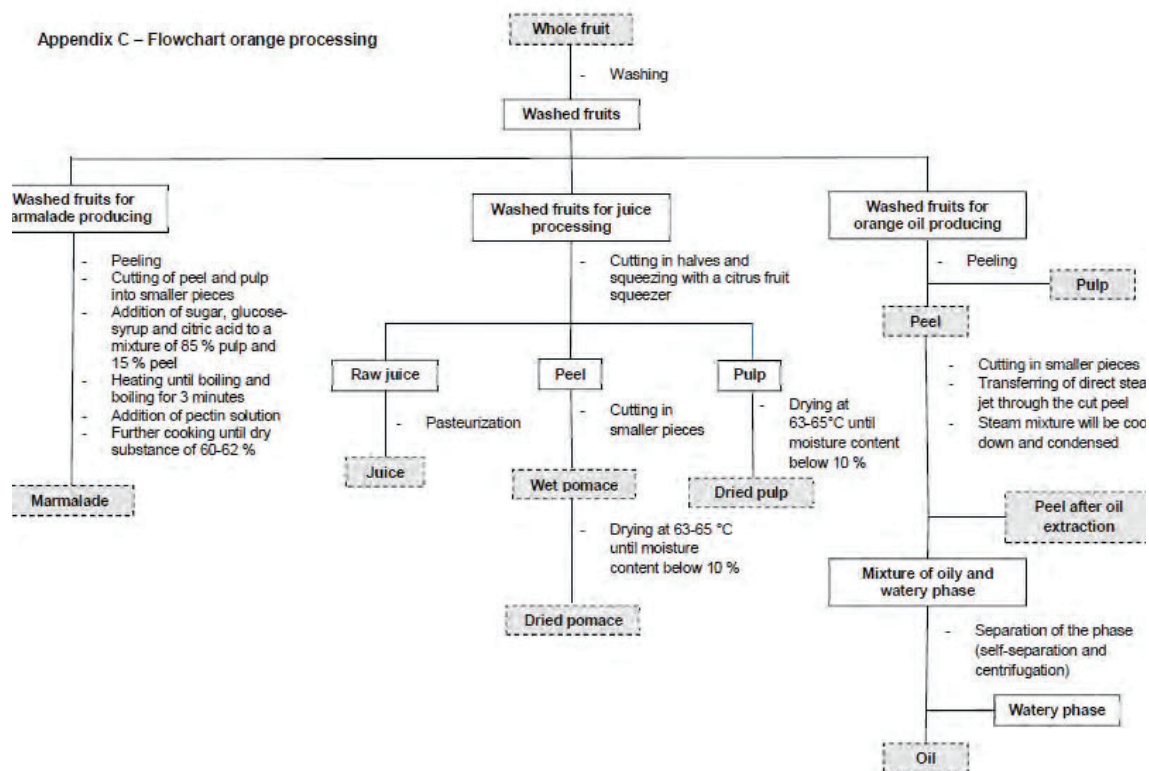


Figure 1 Flow chart of processing procedure for oranges

Table 35 Residues of dimethomorph in processed commodities of oranges

| Portion analysed | Dimethomorph residues mg/kg | | | | | transfer factor (Tf) ^a | | | | |
|-------------------------------|-----------------------------|----------------------|---------------------|---------------------|---------------------|-----------------------------------|--------|--------|--------|-----------------------|
| | Days after last treatment | 1 | 2 | 3 | 4 | 1 | 2 | 3 | 4 | mean Tf best estimate |
| Whole fruit | 0 | 0.34 | 0.31 | 0.32 | 0.73 | – | – | – | – | – |
| Whole fruit | 14–15 | 0.12 | 0.13 | 0.058 | 0.15 | – | – | – | – | – |
| Peel | 14–15 | 0.30 | 0.35 | 0.23 | 0.41 | – | – | – | – | – |
| Pulp | 14–15 | 0.022 | 0.013 | < 0.010 | 0.013 | – | – | – | – | – |
| Whole fruit, RAC ^c | | 0.079 | 0.12 | 0.12 | 0.25 | 1 | 1 | 1 | 1 | |
| Juice | | < 0.01 ^d | < 0.01 ^d | < 0.01 ^d | < 0.01 ^d | < 0.13 | < 0.08 | < 0.08 | < 0.04 | < 0.08 |
| Wet pomace | | 0.14 | 0.12 | 0.16 | 0.35 | 1.77 | 1.00 | 1.33 | 1.40 | 1.38 |
| Dried pomace | | 0.39 | 0.34 | 1.2 | 1.2 | 4.94 | 2.83 | 10.00 | 4.80 | 5.64 |
| Marmalade | | < 0.01 ^d | 0.012 | < 0.01 | < 0.01 | < 0.13 | 0.10 | < 0.08 | < 0.04 | 0.09 |
| Peel after oil extraction | | 0.14 | 0.19 | 0.21 | 0.78 | 1.77 | 1.58 | 1.75 | 3.12 | 2.06 |
| Pulp | | < 0.010 ^d | < 0.01 ^d | < 0.01 ^d | < 0.01 ^d | < 0.13 | < 0.08 | < 0.08 | < 0.04 | < 0.08 |
| Peel | | 0.11 | 0.18 | 0.18 | 0.53 | 1.39 | 1.50 | 1.50 | 2.12 | 1.62 |
| Dried Pulp | | 0.026 | 0.014 | 0.026 | 0.048 | 0.33 | 0.12 | 0.22 | 0.19 | 0.22 |
| Oil | | < 0.01 ^d | < 0.01 ^d | < 0.01 ^d | < 0.01 ^d | < 0.13 | < 0.08 | < 0.08 | < 0.04 | < 0.08 |

^a Transfer factor = residue in processed fraction (PF)/ residue in RAC

^b Trial 1: L110357, Trial 2: L110358, Trial 3: L110359, Trial 4: L110360. These trials are not reported in details here.

^c At processing start

^d For calculation purposes < 0.01 is set 0.01

Strawberry (doc. code 2012/1002401)

During the 2007 growing season four independent field trials in strawberries were conducted in Germany to study the potential of concentration of residues in jam and canned fruit after processing to these commodities. Dimethomorph (WP formulation) was applied once at (0.375 g ai/plant) which are 2–3 times maximum label rate for foliar and soil drench applications respectively. Samples of strawberries were collected 35 days after last application according to critical GAP.

The samples were processed into washed fruit, jam and canned fruit. During processing using simulated commercial processing procedures according to flow diagram in flowchart below different fractions of strawberry intermediates were collected for analysis; specifically washed strawberries, wash water, jam before cooking, jam after cooking, canned strawberries and vegetable stock.

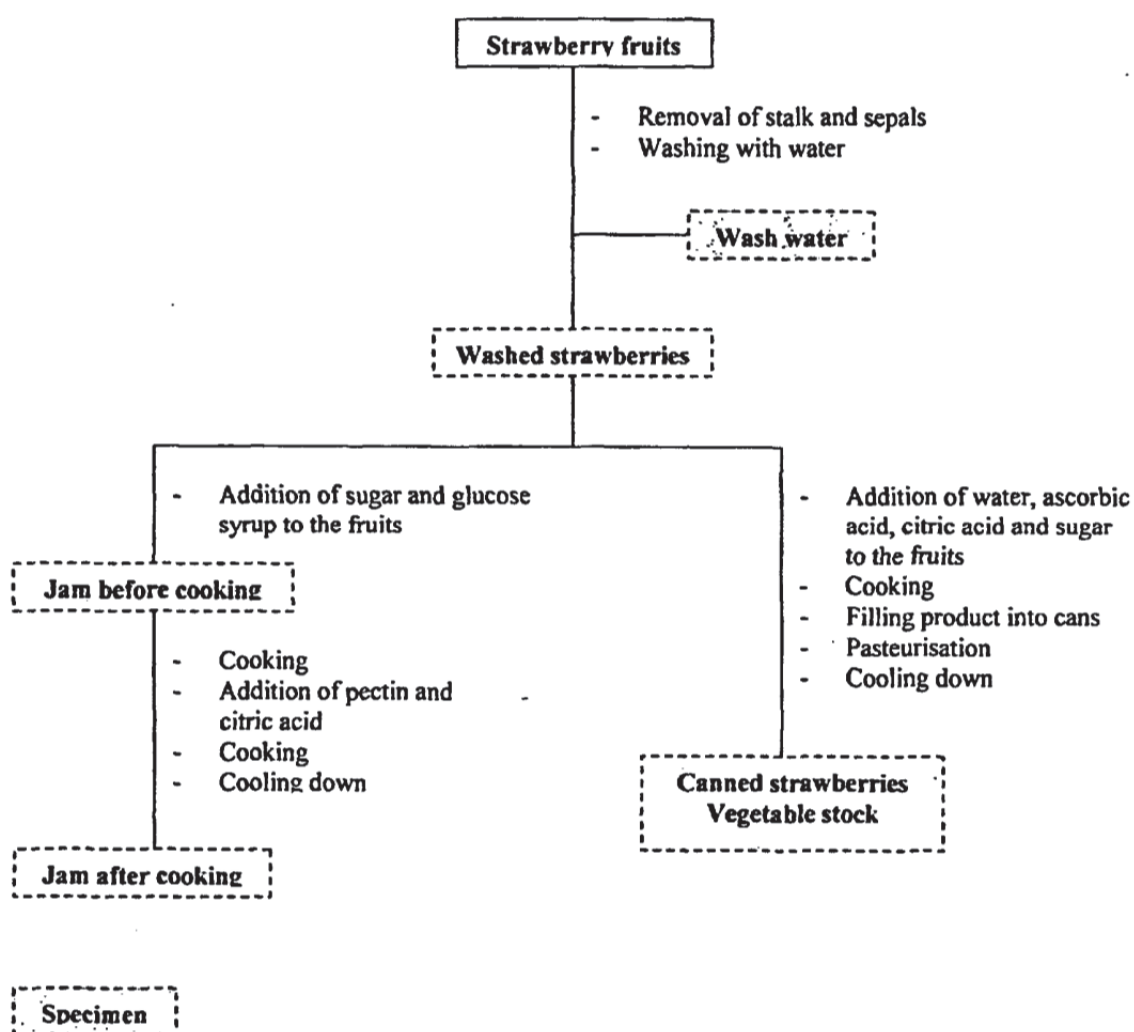


Figure 2 Flow chart of processing procedure for strawberry

Table 36 Summary of dimethomorph residues in process fractions and transfer factors, based on residue levels determined in unwashed strawberry fruit

| Portion analysed | DALA | Dimethomorph residues mg/kg | | | | transfer factor (Tf) ^a | | | | | |
|-------------------------------------|------|-----------------------------|--------------------|------|--------------------|-----------------------------------|------|------|------|-------------------------|------------------------------|
| | | 1 | 2 | 3 | 4 | 1 | 2 | 3 | 4 | median Tf best estimate | mean Tf excl. trials 2 and 4 |
| Strawberry, fruit, RAC ^d | 35 | 0.14 | 0.092 ^c | 0.25 | 0.091 ^c | 1 | 1 | 1 | 1 | 1 | 1 |
| washed strawberries | | 0.11 | 0.17 | 0.27 | 0.2 | 0.79 | 1.85 | 1.08 | 2.20 | 1.47 | 0.94 |
| wash water | | 0.13 | 0.07 | 0.19 | 0.065 | 0.93 | 0.76 | 0.76 | 0.71 | 0.76 | 0.85 |
| jam before cooking | | 0.037 | 0.051 | 0.19 | 0.054 | 0.26 | 0.55 | 0.76 | 0.59 | 0.57 | 0.51 |
| jam after cooking | | 0.034 | 0.050 | 0.11 | 0.039 | 0.24 | 0.54 | 0.44 | 0.43 | 0.44 | 0.34 |
| canned strawberries | | 0.080 | 0.14 | 0.25 | 0.11 | 0.57 | 1.52 | 1 | 1.21 | 1.11 | 0.79 |
| vegetable stock | | 0.055 | 0.080 | 0.17 | 0.057 | 0.38 | 0.87 | 0.68 | 0.63 | 0.66 | 0.53 |

^a Transfer factor = residue in processed fraction (PF)/ residue in RAC

^b Trial 1: FR 24/07/50, Trial 2: FR 24/07/70, Trial 3: 24/07/30, Trial 4: 24/07/75. These trials are not reported in details here

^c Unusually low values (maybe due to analytical problems)

^d At processing start

Table 37 Summary of dimethomorph residues in process fractions and transfer factors based on residue levels determined in washed strawberries

| Portion analysed | DALA | Dimethomorph residues mg/kg | | | | transfer factor (Tf) ^a | | | | |
|---------------------|------|-----------------------------|-------|------|-------|-----------------------------------|------|------|-------|-----------|
| | | 1 | 2 | 3 | 4 | 1 | 2 | 3 | 4 | median Tf |
| washed strawberries | 35 | 0.11 | 0.17 | 0.27 | 0.2 | 1 | 1 | 1 | 1 | 1 |
| wash water | | 0.13 | 0.07 | 0.19 | 0.065 | 1.18 | 0.41 | 0.7 | 0.32 | 0.56 |
| jam before cooking | | 0.037 | 0.051 | 0.19 | 0.054 | 0.34 | 0.30 | 0.7 | 0.27 | 0.32 |
| jam after cooking | | 0.034 | 0.050 | 0.11 | 0.039 | 0.31 | 0.29 | 0.4 | 0.195 | 0.3 |
| canned strawberries | | 0.080 | 0.14 | 0.25 | 0.11 | 0.73 | 0.82 | 0.93 | 0.55 | 0.78 |
| vegetable stock | | 0.055 | 0.080 | 0.17 | 0.057 | 0.50 | 0.47 | 0.63 | 0.28 | 0.49 |

^a Transfer factor = residue in processed fraction (PF)/ residue in RAC

^b Trial 1: FR 24/07/50, Trial 2: FR 24/07/70, Trial 3: 24/07/30, Trial 4: 24/07/75. These trials are not reported in details here

Onion (doc. code 2010/1093126)

During the 2009 growing season four independent trials in bulb onions (*Allium cepa*) were conducted in Germany to study the potential of concentration residues in dried onion, peeled onions and in peel after processing to these commodities. Dimethomorph was applied two times 28 and 14 days before harvest at 0.54 kg ai/ha which is two times the label rate but one time less than maximum number of applications. Samples of onions bulbs were collected on the day of last application and 7±1 days later. The processing of onions was conducted with samples taken at the last sampling which is 7 days later than in cGAP.

Onion bulbs were washed (3 min) with cold tap water immediately before processing. The green leaves were cut off followed by peeling using a knife. The peeled onions were cut into slices and dried in an oven in cycles from 90 °C 20 minutes, 60 °C 20 minutes and 50 °C until the dry weight of 4–6% was reached. After processing four different fractions on onion products or intermediates were collected for analysis, specifically onion bulbs, dried onions, peeled onions and peel.

Residues of dimethomorph were determined by LC-MS/MS using method No. 575/0. The limit of quantitation was 0.01 mg/kg and the mean recovery rate from 84–99% at fortification levels of 0.01–10 mg/kg in the different matrices. The results are summarized in Table 38..

Table 38 Summary of dimethomorph residues and transfer factors in processed commodities from onion bulb

| Portion analysed | DALA | Dimethomorph residues mg/kg | | | | transfer factor (Tf) ^a | | | | | mean Tf best estimate |
|-------------------------------|-------|-----------------------------|---------------------|---------------------|---------------------|-----------------------------------|------|------|------|-----------|-----------------------|
| | | 1 ^b | 2 ^b | 3 ^b | 4 ^b | 1 | 2 | 3 | 4 | Median Tf | |
| Onion bulb | 0 | 0.45 | 0.29 | 0.14 | 0.38 | – | – | – | – | | |
| Onion bulb | 7 ± 1 | 0.22 | 0.98 | 0.30 | 0.098 | | | | | | |
| Onion bulb (RAC) ^c | 7 ± 1 | 0.66 | 0.083 | 0.25 | 0.029 | 1 | 1 | 1 | 1 | 1 | 1 |
| Dried onions | | 0.02 | < 0.01 _d | < 0.01 _d | < 0.01 _d | 0.03 | 0.12 | 0.04 | 0.34 | 0.08 | 0.13 |
| Peeled onions | | < 0.01 _d | < 0.01 _d | < 0.01 _d | < 0.01 _d | 0.02 | 0.12 | 0.04 | 0.34 | 0.08 | 0.13 |
| Peel | | 2.8 | 0.88 | 1.5 | 0.35 | 4.24 | 10.6 | 6.0 | 12.1 | 8.0 | 8.2 |

^a Transfer factor = residue in processed fraction (PF)/ residue in RAC

^b Trial 1: L090306, Trial 2: L090307, Trial 3: L090308, Trial 4: L090309. These trials are not reported in details here

^c At processing start

^d For calculation purposes < 0.01 is set 0.01

Lettuce (doc. code 2008/1004853)

During the growing season 2007, four independent field trials were conducted in Northern France, Germany, Spain and Italy to determine the residue levels of dimethomorph in lettuce head (open and closed head cultivars) and its processed parts. The trials were treated three times with a dose rate of 0.18 kg ai/ha which generally is according to label rates for outdoor lettuce head and leaf, but below (70%) label rates for protected cultivation of lettuce in the Netherlands.

Samples of lettuce heads were collected 0, 7, 14 and 21 days after the last application for analysis of the raw agricultural commodity. The samples for processing were taken 7 days after last treatment which is 7 days later than in cGAP. The processing procedure included dividing lettuce heads into inner and outer leaves and washing of the leaves.

Residues of dimethomorph were determined by LC-MS/MS using method No. 575/0. The limit of quantitation was 0.01 mg/kg and the mean recovery rate from 71–106% at fortification levels of 0.01–20 mg/kg in the different matrices. The result are summarized in Table 39.

Table 39 Summary of dimethomorph residues in processed commodities of lettuce head and transfer factors

| Portion analysed | DALA | Dimethomorph residues mg/kg | | | | transfer factor (Tf) ^a | | | | | Mean Tf |
|---------------------------|------|-----------------------------|---------------------|----------------|----------------|-----------------------------------|------|------|------|-------------------------|---------|
| | | 1 ^b | 2 ^b | 3 ^b | 4 ^b | 1 | 2 | 3 | 4 | median Tf best estimate | |
| Head, RAC | 7 | 0.28 | 0.15 | 1.46 | 0.59 | 1 | 1 | 1 | 1 | 1 | 1 |
| Inner Leaves | | 0.071 | 0.012 | 0.14 | 0.14 | 0.25 | 0.08 | 0.10 | 0.24 | 0.17 | 0.17 |
| Inner leaves washed | | < 0.01 ^c | < 0.01 ^c | 0.21 | 0.063 | 0.04 | 0.07 | 0.14 | 0.11 | 0.09 | 0.09 |
| Outer leaves | | 0.27 | 0.28 | 3.11 | 1.03 | 0.96 | 1.9 | 2.13 | 1.75 | 1.82 | 1.69 |
| Outer leaves washed | | 0.083 | 0.11 | 1.45 | 0.39 | 0.30 | 0.73 | 0.99 | 0.66 | 0.7 | 0.67 |
| wash water (inner leaves) | | 0.016 | 0.014 | 0.028 | 0.025 | 0.06 | 0.09 | 0.02 | 0.04 | 0.05 | 0.05 |
| wash water (outer leaves) | | 0.21 | 0.049 | 0.23 | 0.23 | 0.75 | 0.33 | 0.16 | 0.39 | 0.36 | 0.41 |

^a Transfer factor = residue in processed fraction (PF)/ residue in RAC

^b Trial 1: L070028 (open/leafy head), Trial 2: L070029 (closed head), Trial 3: L070034 (open/leafy head), Trial 4: L070035 (open/leafy head). These trials are not reported in details here

^c For calculation purposes < 0.01 is set 0.01

Pea (doc. code 2007/1044681)

During the 2006 growing season four independent trials were conducted on fresh peas (*Pisum sativum*) in Germany to study the potential of residues its processed products cooked and canned peas. Dimethomorph (WG formulation) was applied as a foliar spray two times 29 and 21 days \pm 1 day prior to harvest, at 0.51–0.53 kg ai/ha which is more than two times the label rate. Samples (plants without pods and whole pods) were collected on the day of last application and 21 \pm 1 days after last application.

The processing of peas was performed with green seeds taken at the last sampling which is according to cGAP. The green seeds were first washed in tap water for three minutes and then boiled in a saucepan covered with water added with salt 2 g/100 mL until the peas were cooked through. For preserving procedure the peas was blanched by staying 2 minutes $<$ 85 °C. After blanching the peas were put in tins covered with 2% NaCL-solution. The tins with the peas were sterilized at 120 °C in an autoclave for 20 minutes. During processing different fractions from pea products or intermediates were collected for analysis, specifically washed peas, cooked peas, blanched seed and canned peas.

Table 40 Summary of dimethomorph residues in processed commodities of peas and transfer factors

| Portion analysed | DALA | Dimethomorph residues mg/kg | | | | transfer factor (Tf) ^a | | | | |
|-------------------------------|-------|-----------------------------|-----------------------|-----------------------|-----------------------|-----------------------------------|-------|-------|-------|---------------------|
| | | 1 ^b | 2 ^b | 3 ^b | 4 ^b | 1 | 2 | 3 | 4 | median Tf |
| Plants without pods | 0 | 29.067 | 29.638 | 20.719 | 27.746 | – | – | – | – | – |
| Whole pods | 0 | 1.304 | 2.147 | 1.521 | 1.648 | – | – | – | – | – |
| Green seed (RAC) ^c | 20–22 | 0.168 | 0.042 | 0.050 | 0.122 | 1 | 1 | 1 | 1 | 1 |
| Washed peas | | 0.035 | 0.017 | 0.046 | 0.063 | 0.208 | 0.405 | 0.092 | 0.516 | 0.307 |
| Wash water | | 0.111 | 0.021 | 0.017 | 0.048 | 0.661 | 0.500 | 0.340 | 0.393 | 0.447 Mean 0.47 |
| Cooked peas | | 0.014 | $<$ 0.01 _d | 0.013 | 0.021 | 0.083 | 0.238 | 0.260 | 0.172 | 0.205 |
| Cooking liquid | | 0.016 | $<$ 0.0 _{d1} | 0.012 | 0.020 | 0.095 | 0.238 | 0.240 | 0.164 | 0.201 |
| Blanched seed | | $<$ 0.01 | 0.011 | $<$ 0.01 _d | 0.021 | 0.060 | 0.262 | 0.200 | 0.172 | 0.186 |
| Blanching water | | 0.021 | $<$ 0.01 _d | $<$ 0.01 _d | 0.026 | 0.125 | 0.238 | 0.200 | 0.213 | 0.207 |
| Canned peas | | $<$ 0.01 | $<$ 0.01 _d | $<$ 0.01 _d | $<$ 0.01 _d | 0.06 | 0.238 | 0.200 | 0.082 | 0.141/mean 0.145 |
| Vegetable stock | | $<$ 0.01 | $<$ 0.01 _d | $<$ 0.01 _d | $<$ 0.01 _d | 0.06 | 0.238 | 0.200 | 0.082 | 0.141 |

^a Transfer factor = residue in processed fraction (PF)/ residue in RAC

^b Trial 1: FR 22/06/40, Trial 2: FR 22/06/70, Trial 3: FR 22/06/50, Trial 4 FR 22/06/60. These trials are not reported in details here

^c At processing start

^d For calculation purposes $<$ 0.01 is set 0.01

Table 41 Calculated processing factors from studies provided for dimethomorph residues in oranges, strawberry, onions, lettuce head and pea.

| Processed com | pf | n ^a | STMR-P | HR-P |
|----------------------------------|------|----------------|--------|-------|
| Orange, juice | 0.08 | 4 | 0.015 | 0.072 |
| Oranges, peeled | 0.08 | 4 | 0.015 | 0.072 |
| Oranges, marmalade | 0.09 | 4 | 0.017 | 0.081 |
| Oranges, oil | 0.08 | 4 | 0.015 | 0.072 |
| Orange, peel | 1.62 | | 0.308 | 1.458 |
| Orange peel after oil extraction | 2.06 | 4 | 0.391 | 1.854 |
| Oranges, dried pulp | 0.22 | 4 | 0.042 | 0.198 |

| Processed com | pf | n ^a | STMR-P | HR-P |
|---|-------------------|----------------|--------|-------|
| Orange pomace, wet | 1.38 | 4 | 0.262 | 1.242 |
| Orange pomace, dry | 5.64 | 4 | 1.072 | 5.076 |
| Grapes, wine | 0.29 ^b | 4 | 0.189 | 0.87 |
| Raisin | 1.8 ^b | 4 | 1.17 | 5.4 |
| Grape, pomace wet | 2.75 ^b | 4 | 1.787 | 8.25 |
| Strawberry, washed | 1.47 | 4 | 0.191 | 1.323 |
| Strawberry, jam before cooking | 0.57 | 4 | 0.074 | 0.513 |
| Strawberry, jam after cooking | 0.44 | 4 | 0.057 | 0.396 |
| Strawberry, canned | 1.11 | 4 | 0.632 | 0.999 |
| Onions, dried | 0.13 | 4 | 0.009 | 0.666 |
| Onions, peeled | 0.13 | 4 | 0.009 | 0.666 |
| Peel of onions | 8.2 | 4 | 0.574 | 4.92 |
| Lettuce head (outdoor), inner leaves | 0.17 | 4 | 0.165 | 1.53 |
| Lettuce head (outdoor), inner leaves washed | 0.09 | 4 | 0.087 | 0.81 |
| Lettuce head (outdoor), outer leaves washed | 0.7 | 4 | 0.679 | 6.3 |
| Peas (<i>Pisum sativum</i>), washed | 0.31 | 4 | 0.031 | 0.047 |

^aNumber

Residues in animal commodities

New residue data on residues of dimethomorph in animal feed have been provided to the 2014 Meeting. A new livestock dietary burden calculation has therefore been performed (Annex 6 to the 2014 Report).

The new estimation did not result in significant change of the dietary burdens of farm animals, please see Appraisal.

APPRAISAL

Dimethomorph is a fungicide with protective action against plant pathogenic *Phytophthora* species and a number of downy mildew diseases of fruit, vegetables and potatoes. It consists of a mixture of an E and Z isomers in approximately equal proportions. Its mode of action is through disruption of fungal cell wall formation.

Dimethomorph was evaluated for the first time by the JMPR in 2007 and the Meeting established an acceptable daily intake (ADI) of 0–0.2 mg/kg bw and an acute reference dose (ARfD) of 0.6 mg/kg bw. The residue (for compliance with the MRL and for the estimation of dietary intake) for plant and animal commodities was defined as dimethomorph (sum of isomers). Maximum residues levels for 20 commodities were proposed by the JMPR in 2007.

The current Meeting received information on supervised residue trial for dimethomorph in oranges, strawberries, grapes, papaya, bulb onions, leek, spring onions, head cabbage, broccoli, pepper, lettuce leaf, spinach, lettuce head, taro, green peas, vining peas, lima beans, artichoke, and celery. An analytical method for determination of dimethomorph in animal matrices were provided as well as validation data for an analytical method in oranges and processing studies in oranges, strawberry, onion, lettuce head, and peas.

Methods of analysis

The 2007 Meeting evaluated methods of analysis for dimethomorph in different plant and animal matrices with a LOQ of 0.01 mg/kg (LC-MS/MS or GC-NDP), LOQ of 0.02 mg/kg (GC-NDP or GC-MS) based on the multi-residue method DFG-S19.

The current Meeting received information on a new analytical method LO138/01 for dimethomorph in animal matrices. In this method dimethomorph is extracted with methanol/water/hydrochloric acid. The final determination of dimethomorph is performed by HPLC-MS/MS at two transitions. Transition m/z 388 → 301 is the target transition for quantification and transition m/z 388 → 165 for confirmatory purposes. The method is suitable for measuring residues of 0.01 mg/kg for dimethomorph in milk, egg, muscle and liver.

Stability of pesticide residues in stored analytical samples

In 2007 the Meeting concluded that dimethomorph is stable (less than 10% loss of residues) under frozen conditions in stored samples in most crops and animal commodities if stored under frozen conditions at 18-24 months and 16 months, respectively.

Results of supervised residue trials on crops

Oranges

Data from supervised trials on oranges from Spain were presented to the Meeting. However, no registered GAP from Spain was available for oranges. As a result no estimation of a maximum residue level was made.

Grapes

Data from supervised trials on grapes from the USA were presented to the Meeting. The registered critical GAP in the USA is four foliar applications of 0.219 kg ai/ha and PHI of 14 days.

In twelve independent residue trials from USA matching the cGAP the residues of dimethomorph in grapes were (n=12): 0.11, 0.26, 0.41, 0.46, 0.49, 0.55, 0.65, 0.71, 0.75, 0.92, 1.77, 1.86 mg/kg.

The Meeting estimated a maximum residue level, an STMR value and an HR value for dimethomorph in grapes of 3 mg/kg, 0.60 mg/kg and 1.9 mg/kg, respectively. The Meeting replaces its previous recommendation of 2 mg/kg for a maximum residue level for grapes.

Strawberry

Data from supervised trials on strawberries were presented to the Meeting.

The critical GAP is from Belgium (protected and outdoor) with three successive root drench applications of 0.05 g ai/plant and a PHI of 35 days. No trials supporting the GAP were provided.

In Ireland the GAP (protected and outdoor) is one root drench application of 0.05 g ai/plant with a PHI of 35 days. A dataset on protected strawberries was submitted consisting of four trials with replicate plots treated either at 0.0625 g ai/plant or 0.125 g ai/plant and with four additional trials solely treated at 0.125 g ai/plant.

In four GAP compliant plots conducted at 0.0625 g ai/plant residues in strawberry fruits were (n=4): 0.03, 0.18, 0.26, 0.3 mg/kg.

In four additional trials solely conducted at 0.125 g ai/plant residues in strawberry fruits were (n=4): 0.04 (2), 0.05 and 0.21 mg/kg.

Since the four trials provided according to GAP are insufficient for an evaluation of residues in strawberries, the Meeting decided to extend the dataset by applying the proportionality approach. In accordance to the general principles outlined in the 2012 JMPR report, all residue values within and above 25% deviation from GAP were scaled to match the application rate of 0.05 g ai/plant. From

replicated plots conducted at different application rates, the higher scaled residue was selected for the assessment. Scaled residues in strawberry fruits were: 0.024, 0.14, 0.21, 0.24 mg/kg (factor 0.8, based on 0.0625 g ai/plant → 0.05 g ai/plant and 0.016, 0.016, 0.02, 0.084 mg/kg (factor 0.4, based on 0.125 g ai/plant → 0.05 g ai/plant).

The combined scaled dataset is (n=8) 0.016, 0.016, 0.02, 0.024, 0.084, 0.14, 0.21 and 0.24 mg/kg.

Three similar outdoor trials with a PHI of 43 days from Belgium, the Netherlands and Germany were also available. The residues in these trials were for 0.125 g ai/plant (n=3) 0.01, 0.02 and 0.04 mg/kg.

For drip irrigation eight trials from Spain using 2 × 0.75 kg ai/ha with a PHI of one day were presented to the Meeting. No registered GAP from Spain was available for strawberries.

In the United Kingdom the registered GAP for outdoor is one foliar spray at 1.5 kg ai/ha applied just after planting/transplanting with a PHI of 35 days. Eight trials presented to JMPR 2007 from the Netherlands and four trials from northern Europe presented to the current Meeting match this GAP and could be combined. The residues found in these combined trials are (n=12) < 0.01 mg/kg (9), 0.01, 0.02 and 0.03 mg/kg.

The highest residues came from the protected root drench treatment. Based on the combined scaled dataset from protected root drench trials for strawberries in Ireland, the Meeting estimated a maximum residue level, an STMR value and an HR value for dimethomorph for strawberries of 0.5 mg/kg, 0.05 mg/kg and 0.24 mg/kg, respectively. The Meeting replaces its previous recommendation of 0.05 mg/kg for maximum residue level for strawberry.

Papaya

Data from supervised trials on papaya from Brazil were presented to the Meeting. No registered GAP from Brazil was available for papaya. As a result no maximum residue level estimation was made.

Bulb vegetables

Bulb onion

The Meeting received results from supervised trials with dimethomorph on bulb onions. The critical GAP is for Bulb Vegetables (Garlic, Garlic great headed, Leek, Onion dry bulb, Onion green, Onion Welsh Shallot) in the USA and Canada with three foliar applications of 0.21 kg ai/ha and PHI of 0 days.

Ten independent residue trials from the USA (nine) and Canada (one) were presented on bulb onions matching the cGAP. Residues of dimethomorph in bulb onions were (n=10) 0.06, 0.08, 0.10, 0.12, 0.16, 0.18 (2), 0.23, 0.28 and 0.38 mg/kg. The highest residue of 0.40 mg/kg was measured in individual onion samples.

The Meeting estimated a maximum residue level, an STMR value and an HR value for dimethomorph in bulb onions of 0.6 mg/kg, 0.17 mg/kg and 0.40 mg/kg, respectively. The Meeting also agreed to extrapolate these estimations to shallot and garlic.

Leek

Data from supervised trials on leek were presented to the Meeting. The critical GAP is in France with two foliar applications of 0.18 kg ai/ha and a PHI of 14 days.

Eighteen independent trials from Belgium, Germany, Greece, Italy, France, the Netherlands, Spain, and the UK matching this GAP were presented. The dimethomorph residue from trials on leek was in south EU (n=4) 0.06, 0.08, 0.3 and 0.69 mg/kg and north EU (n=14) 0.01 (2), < 0.02 (2), 0.03, 0.04 (2), 0.07, 0.08 (2), 0.10 (2), 0.11, 0.13.

The combined data set is (n= 18) 0.01 < 0.02 (2), 0.03 0.04 (2), 0.05, 0.06, 0.07, 0.08 (3), 0.10 (2), 0.11, 0.13, 0.30 and 0.69 mg/kg.

The Meeting estimated a maximum residue level, an STMR value and an HR value for dimethomorph in leek of 0.8 mg/kg, 0.08 mg/kg and 0.69 mg/kg, respectively.

Spring onion

Data from supervised trials on spring onion were presented to the Meeting. The critical GAP is for Bulb Vegetables (Garlic, Garlic great headed, Leek, Onion dry bulb, Onion green, Onion Welsh Shallot) in USA and Canada with three foliar applications of 0.21 kg ai/ha and a PHI of 0 days.

Six independent residue trials from the USA matched the cGAP. Residue of dimethomorph in whole plant were (n=6) 1.27, 1.56, 1.79, 2.35, 2.45 and 5.36 mg/kg. The highest residue of 6.6 mg/kg was measured in individual spring onion samples.

The Meeting estimated a maximum residue level, an STMR value and an HR value for dimethomorph in spring onion of 9 mg/kg, 2.1 mg/kg and 6.6 mg/kg, respectively. The Meeting also agreed to extrapolate this estimation to Onion, Welsh.

Brassica vegetables

Head cabbage

The Meeting received results from supervised trials with dimethomorph on head cabbage. The critical GAP is in USA with three foliar applications of 0.21 kg ai/ha and a PHI of 0 days.

Ten independent residue trials from USA matched the cGAP. Residue from dimethomorph in cabbage heads were (n=10) 0.17, 0.45, 0.46, 0.86, 1.08 (2), 1.22, 1.37 1.51 and 4.26 mg/kg. The highest residue of 4.6 mg/kg was measured in individual head cabbage samples.

The Meeting estimated a maximum residue level, an STMR value and an HR value for dimethomorph in head cabbage of 6 mg/kg, 1.1 mg/kg and 4.6 mg/kg, respectively. The Meeting replaces its previous recommendation of 2 mg/kg for maximum residue level for head cabbage.

Broccoli

Data from supervised trials on broccoli were presented to the Meeting. The critical GAP is from the USA which consists of three foliar applications of 0.21 kg ai/ha and a PHI of 0 days.

Ten independent residue trials performed in USA match the US GAP. Residues for dimethomorph in broccoli were (n=10): 0.25, 0.68, 0.74, 0.90, 0.95, 1.49, 1.62, 1.75, 1.88 and 2.33 mg/kg. The highest residue of 2.6 mg/kg was measured in an individual broccoli sample.

The Meeting estimated a maximum residue level, an STMR value and an HR value for dimethomorph in broccoli of 4 mg/kg, 1.3 mg/kg and 2.6 mg/kg, respectively. The Meeting replaces its previous recommendation of 1 mg/kg for a maximum residue level for broccoli.

Fruiting vegetables, other than cucurbits

Peppers

Data from supervised trials on pepper were presented to the Meeting. The GAP in Canada for Fruiting vegetables (tomato, eggplant, ground cherry, peppers (all varieties), pepino and tomatillo) is five foliar applications of 0.225 kg ai/ha and a PHI of 0 days.

In eleven outdoor independent residue trials in USA matching the Canadian GAP the residues of dimethomorph in peppers were (n= 11): 0.04, 0.06, 0.08, 0.11, 0.13(2), 0.14, 0.25, 0.7, 0.84 and 1.05 mg/kg.

Tomato

Data from supervised trials on tomato were presented to the 2007 Meeting. The critical GAP is from Canada for Fruiting vegetable with five foliar applications of 0.225 kg ai/ha and PHI of 0 day.

In twelve outdoor independent residue trials on tomato from the USA matching the cGAP the residue of dimethomorph in tomato fruit were (n= 12): 0.05(2), 0.06(2), 0.07, 0.11, 0.14, 0.21, 0.3, and 0.38, 0.41 and 0.51 mg/kg.

The Meeting noted that the GAP in Canada was for fruiting vegetables, other than cucurbits, the medians of the data sets for peppers and tomatoes differed by less than 5-fold and that the residue populations were statistically similar. The Meeting therefore decided to consider recommending a crop group maximum residue level. The combined data set matching the Canadian GAP is (n= 23) 0.04, 0.05(2) 0.06(3), 0.07, 0.08, 0.11(2), 0.13(2), 0.14(2), 0.21, 0.25, 0.30, 0.38, 0.41, 0.51 0.70, 0.84 and 1.05 mg/kg. The highest residue of 1.2 mg/kg was measured in an individual pepper sample.

The Meeting estimated a group maximum residue level, an STMR value and an HR value for dimethomorph in fruiting vegetables, other than cucurbits except mushrooms and sweet corn of 1.5 mg/kg, 0.13 mg/kg and 1.2 mg/kg, respectively.

The Meeting withdraws its previous recommendation of 1 mg/kg for fruiting vegetable, other than cucurbits except mushrooms and sweet corn.

*Leafy vegetables**Lettuce, Head*

Data from supervised field trials on head lettuce were presented to the Meeting. The critical GAP is from USA for Leafy vegetables, except brassica vegetables, consisting of three foliar applications at 0.19 kg/ha and a PHI of 0 days.

In fourteen independent trials from the USA matching the cGAP the residues from dimethomorph in head lettuce were (n= 14): 1.08, 1.21, 1.36, 1.42, 1.46, 1.68, 1.72, 2.06, 2.3, 2.82, 3.63, 4.1, 4.37 and 6.45 mg/kg.

The Meeting noted that the US trials reported by the 2007 JMPR resulted in higher residues. The Meeting therefore, confirmed the previous recommendations made by the 2007 JMPR.

Lettuce, Leaf

Data from supervised trials on leaf lettuce were presented to the Meeting. The critical GAP is from USA for Leafy vegetables, except brassica vegetables with three foliar applications 0.19 kg/ha and a PHI of 0 days.

In nine independent trials from the USA matching the cGAP the residues from dimethomorph in lettuce leaf were (n= 9) 2.09, 3.37, 3.68, 4.61, 5.19, 5.38, 5.83, 9.77 and 9.88 mg/kg. The highest residue of 10.5 mg/kg was measured in an individual lettuce sample.

The Meeting estimated a maximum residue level, an STMR value and a HR value for dimethomorph in leaf lettuce of 20 mg/kg, 5.2 mg/kg and 10.5 mg/kg.

Short-term intake assessment showed that residues in leaf lettuce exceeded the acute reference dose of 0.6 mg/kg bw by 110% for children.

Spinach

Data from supervised trials on spinach were presented to the Meeting. The critical GAP is from USA for Leafy vegetables, except brassica vegetables with three foliar applications 0.19 kg/ha and a PHI of 0 days.

In eight independent trials from the USA matching the cGAP the residues from dimethomorph in spinach leaves were (n= 8) 4.69, 5.30, 5.91, 8.21, 8.35, 8.48, 10.18 and 11.26 mg/kg. The highest residue of 11.5 mg/kg was measured in individual spinach samples.

The Meeting estimated a maximum residue level, an STMR value and an HR value for dimethomorph in spinach of 30 mg/kg, 8.3 mg/kg and 11.5 mg/kg, respectively.

Taro leaves

Data from supervised trials on taro leaves from USA were presented to the Meeting. The critical GAP is five foliar applications of 0.19 kg ai/ha and PHI 7 days for use in USA except California.

Dimethomorph was applied seven times to taro at the rate of 0.225 kg ai/ha with an interval of 7–8 days. Presented residue trials from head lettuce, leaf lettuce and spinach show that residues of dimethomorph decline significantly three days after application. The Meeting, therefore, concluded that the first two applications would not contribute significantly to the residues in leaves at harvest.

In three independent trials from USA matching the cGAP residues in taro leaves were (n=3): 1.44, 1.64 and 4.53 mg/kg. The highest residue of 5.4 mg/kg was measured in an individual taro sample.

The Meeting estimated a maximum residue level, an STMR value and an HR value for dimethomorph in taro leaves of 10 mg/kg, 1.64 mg/kg and 5.4 mg/kg, respectively.

Legume vegetable

Peas, shelled (succulent seed)

Data on supervised trials on peas were presented to the Meeting. The critical GAP is from France with two foliar applications at 0.18 kg ai/ha and a PHI of 21 days.

In twelve independent trials from north (eight) and south (four) Europe matching the cGAP residues of dimethomorph in fresh peas without pods were (n= 12) < 0.01 (8), 0.016, 0.044 and 0.063 mg/kg.

The Meeting estimated a maximum residue level, an STMR value and an HR value for dimethomorph in peas without pods of 0.15 mg/kg, of 0.01 mg/kg and 0.063 mg/kg, respectively.

Lima bean

Data from supervised trials on Lima bean were presented to the Meeting. The critical GAP is from the USA with five applications at 0.19 kg ai/ha and a PHI of 0 days.

Ten independent trials matching the cGAP were conducted on Lima bean in USA. Residues of dimethomorph in beans (succulent seed without pods) (n=10) were 0.01, 0.03(4), 0.05, 0.06, 0.08, 0.1, 0.21 and 0.47 mg/kg. The highest residue of 0.48 mg/kg was measured in an individual Lima bean sample.

The Meeting estimated a maximum residue level, an STMR value and an HR value for dimethomorph in Lima bean of 0.7 mg/kg, 0.055 mg/kg and 0.48 mg/kg, respectively.

Root and tuber vegetables

Ginseng

Data from supervised trials on ginseng were presented to the Meeting. The critical GAP from the USA, except California, is five applications of 0.19 kg ai/ha and a PHI of 14 days. Four trials were presented where dimethomorph was applied seven times at 0.225 kg ai/ha. Residue decline trials were not provided for any root and tuber vegetable to support that the first two applications did not contribute to the residues at harvest. Consequently, no maximum residue level estimation was made.

Taro root

Data on supervised trials on taro corms from Hawaii were presented to the Meeting. The critical GAP is five applications of 0.19 kg ai/ha and a PHI of 30 days in the USA, except California. Three trials were presented where dimethomorph was applied seven times at 0.225 kg ai/ha. Residue decline trials were not presented for any root and tuber vegetable to support that the first two applications not contribute to the residues at harvest. Consequently, no maximum residue level estimation was made.

*Stalk and stem vegetables**Globe artichoke*

Data from supervised trials on globe artichoke were presented to the Meeting. The critical GAP from France is three foliar applications of 0.18 kg ai/ha and PHI of 3 days.

In ten independent trials from Europe matching the French GAP residues of dimethomorph in artichoke heads were in North Europe (n=5) 0.11, 0.24, 0.26, 0.55 and 0.75 mg/kg and in South EU (n=5) 0.06, 0.09, 0.14, 0.32 and 1.14 mg/kg.

The combined data set was (n=10): 0.06, 0.09, 0.11, 0.14, 0.24, 0.26, 0.32, 0.55, 0.75 and 1.14 mg/kg.

The Meeting estimated a maximum residue level, an STMR value and an HR value for dimethomorph in globe artichoke of 2 mg/kg, 0.25 mg/kg and 1.14 mg/kg, respectively.

Celery

Data from supervised trials on celery were presented to the Meeting. The critical GAP is from the USA with three foliar applications of 0.21 g ai/ha and a PHI of 0 days.

In nine independent trials from Canada (two) and from USA (seven) matching the cGAP residues of dimethomorph in leaf stalks were (n=9): 1.27, 1.55, 1.85, 1.91, 2.44, 3.27, 4.02, 5.54 and 8.21 mg/kg.

The highest residue of 8.8 mg/kg was measured from an individual celery sample.

The Meeting estimated a maximum residue level, an STMR value and an HR value for dimethomorph in celery of 15 mg/kg, 2.44 mg/kg and 8.8 mg/kg, respectively.

*Animal feeds**Pea forage*

Data on supervised trials on peas were presented to the Meeting. The critical GAP is from France with two foliar applications at 0.18 kg ai/ha and a PHI of 21 days. However, the residues (10) 28 days after the second treatment were found to be higher and were used for animal burden calculation: 0.42, 0.59, 1.57, 1.59, 1.88, 2.40, 4.60, 4.97, 5.45 and 9.58 mg/kg.

The Meeting estimated in pea forage a median residue of 2.14 mg/kg (fresh weight) and a highest residue of 9.58 mg/kg (fresh weight).

Fate of residue during processing

The Meeting received information on processing of oranges, strawberries, onions, lettuce head and peas.

Processing factors calculated for the processed commodities for the above raw agricultural commodities, including previously estimated, are shown in the table below. STMP-Ps was calculated for processed commodities of strawberry, onion and peas for which maximum residue levels were estimated.

| Processed commodity | Processing factor | PF (Best estimate) | STMR-P | HR-P |
|--------------------------|------------------------|--------------------|--------|-------|
| Strawberry, jam | 0.24, 0.43, 0.44, 0.54 | 0.435 | 0.02 | |
| Strawberry, canned | 0.57, 1, 1.21, 1.52 | 1.11 | 0.0555 | |
| Onions, raw without skin | 0.02, 0.04, 0.12, 0.34 | 0.08 | 0.014 | 0.032 |
| Dried onion | 0.03, 0.12, 0.04, 0.34 | 0.13 | 0.022 | 0.053 |
| Peas (cooked) | 0.08, 0.17, 0.24, 0.26 | 0.21 | 0.002 | |
| Peas (canned) | 0.06, 0.08, 0.20, 0.24 | 0.14 | 0.0014 | |

*estimated by 2007JMPR Meeting

** PF =processing factor

^b Data from a 5-week special neurotoxicity study, using a limited number of dogs.

The Meeting confirmed its previous maximum residue level estimation of 5 mg/kg for dried grapes.

Residues in animal commodities

Farm animal dietary burden

Dietary burden calculation for beef cattle, dairy cattle, broilers and laying poultry based on feed items evaluated by JMPR in 2007 and 2014 are provided in table below. The calculations were made according to the livestock diets from US-Canada, EU, Australia and Japan according to OECD feeding table. Noting that fresh forage commodities are not significant in international trade, the Meeting only included the burden contributions from the pea forages in the European dietary burden calculation, as dimethomorph is not authorised for use on peas in US-Canada, Australia or Japan.

Dietary burden calculations for beef cattle, dairy cattle, broilers and laying poultry are presented in Annex 6 and are summarised below.

Estimated maximum and mean dietary burden of farm animals Summary (ppm of dry matter diet)

| | US-Canada | | EU | | Australia | | Japan | |
|-----------------|-----------|-------|--------------------|---------------------|-----------|------|-------|-------|
| | max | mean | max | mean | max | mean | max | mean |
| Beef cattle | 0.4 | 0.3 | 14.2 ^a | 3.6 ^c | 2.6 | 2.6 | 0.007 | 0.007 |
| Dairy cow | 0.1 | 0.1 | 14.1 ^b | 3.5 ^d | 2.6 | 2.6 | 0.01 | 0.01 |
| Poultry-broiler | 0.002 | 0.002 | 0.06 | 0.05 | 0.04 | 0.04 | 0.002 | 0.002 |
| Poultry layer | 0.002 | 0.002 | 5.4 ^{e,g} | 1.27 ^{f,h} | 0.04 | 0.04 | 0.007 | 0.007 |

^a Highest maximum beef or dairy cattle dietary burden suitable for MRL estimates for mammalian tissues

^b Highest maximum dairy cattle dietary burden suitable for MRL estimates for mammalian milk

^c Highest mean beef or dairy cattle dietary burden suitable for STMR estimates for mammalian tissues.

^d Highest mean dairy cattle dietary burden suitable for STMR estimates for milk.

^e Highest maximum poultry dietary burden suitable for MRL estimates for poultry tissues.

^f Highest mean poultry dietary burden suitable for STMR estimates for poultry tissues.

^g Highest maximum poultry dietary burden suitable for MRL estimates for poultry eggs.

^h Highest mean poultry dietary burden suitable for STMR estimates for poultry eggs

For beef and dairy cattle, the calculated maximum dietary burdens suitable for estimating maximum residue levels in mammalian tissues and milk are 14.2 and 14.1 ppm dry weight of feed respectively.

The calculated mean dietary burden, suitable for estimating STMRs in mammalian tissues and in milk is 3.6 and 3.5 ppm, dry weight of feed, respectively.

In the cattle feeding study evaluated by JMPR in 2007 where lactating cows were dosed at 37.5 ppm (approximately 40% higher than estimated maximum burden) no residues of parent dimethomorph were detected in edible tissue or milk. Therefore the Meeting concluded that no residues are to be expected at the maximum calculated dietary burden for ruminants.

The calculated maximum dietary burden suitable for estimating maximum residue levels in poultry tissues and eggs is 5.4 ppm dry weight of feed and the calculated mean dietary burden, suitable for estimating STMRs in poultry tissues and in eggs is 1 ppm dry weight of feed.

In the metabolism study where laying hens were fed the equivalent of 40 ppm in the feed for seven days, dimethomorph residues in fat and skin were < 0.02 mg/kg and were not detected in tissue or eggs. On the basis that the maximum calculated dietary burden is eight times lower than the dose rate in the metabolism study the Meeting concluded that no residues of dimethomorph are to be expected at the maximum calculated dietary burden for poultry.

The Meeting confirmed the previous recommendations for animal commodities.

RECOMMENDATIONS

On the basis of the data from supervised residue trials the Meeting concluded that the residue levels listed below are suitable for establishing maximum residue limits and for the IEDI and IESTI assessment.

Definition of the residue (for compliance with the MRL and for estimation of dietary intake) for plant and animal commodities: dimethomorph (sum of isomers).

The residue is not fat soluble.

MRL recommendations and dietary intake

| CCN | Commodity | Recommended Maximum residue level (mg/kg) | | STMR or STMR-P mg/kg | HR or HR-P mg/kg |
|---------|---|---|----------|----------------------|------------------|
| | | New | Previous | | |
| VS 0620 | Artichoke, Globe | 2 | | 0.25 | 1.14 |
| VB 0400 | Broccoli | 4 | 1 | 1.3 | 2.6 |
| VB 0041 | Cabbages, Head | 6 | 2 | 1.1 | 4.6 |
| VS 0624 | Celery | 15 | | 2.44 | 8.8 |
| DF 0269 | Dried grapes (= currants, Raisins and Sultanas) | 5 | 5 | 1.17 | 3.4 |
| VO 0050 | Fruiting vegetables, other than Cucurbits | 1.5 | 1 | 0.13 | 1.2 |
| VA 0381 | Garlic | 0.6 | | 0.17 | 0.4 |
| FB 0269 | Grapes | 3 | 2 | 0.60 | 1.9 |
| VA 0384 | Leek | 0.8 | | 0.08 | 0.69 |
| VL 0482 | Lettuce, Head | 10 | 10 | 3.6 ^a | 7.2 ^a |
| VL 0483 | Lettuce, Leaf | 20 | | 5.19 | 10.5 |
| VP 0534 | Lima bean (young pods and/or immature beans) | 0.7 | | 0.055 | 0.48 |
| VA 0385 | Onion, Bulb | 0.6 | | 0.17 | 0.4 |
| VA 0387 | Onion, Welsh | 9 | | 2.1 | 6.6 |
| VP 0064 | Peas, shelled (succulent seeds) | 0.15 | | 0.01 | 0.63 |
| VA 0388 | Shallots | 0.6 | | 0.17 | 0.4 |
| VL 0502 | Spinach | 30 | | 8.3 | 11.5 |
| VA 0389 | Spring onion | 9 | | 2.1 | 6.6 |
| FB 0275 | Strawberry | 0.5 | 0.05 | 0.02 | 0.24 |
| VL 0505 | Taro leaves | 10 | | 1.64 | 5.4 |
| | | | | | |
| | Dried onion | | | 0.022 | 0.053 |
| | Grapes, wine | | | 0.18 | |

| CCN | Commodity | Recommended Maximum residue level (mg/kg) | | STMR or STMR-P mg/kg | HR or HR-P mg/kg |
|---------|--------------------------|---|----------|-------------------------|---------------------|
| | | New | Previous | | |
| | Onions, raw without skin | | | 0.014 | 0.03 |
| | Peas (canned) | | | 0.0014 | |
| | Peas (cooked) | | | 0.002 | |
| | Strawberry jam | | | 0.02 | |
| | Strawberry, canned | | | 0.056 | |
| JF 0448 | Tomato juice | | | 0.065 | |
| VW 0448 | Tomato paste | | | 0.31 | 2.88 |

^a recommendations from the 2007 Meeting

Additional values used to calculate the livestock animal dietary burden

| CCN | Commodity name | STMR or STMR-P, mg/kg | HR or HR-P, mg/kg |
|---------|-----------------------|-----------------------|-------------------|
| AL 0528 | Pea vines (green) | 2.14 | 9.58 |
| | Grape pomace wet | 1.95 ^a | |
| | Potato process, waste | 0.12 ^a | |
| | Potato culls | 0.02 ^a | 0.05 ^a |
| | Rape meal | 0.04 ^a | |

^a recommendations from the 2007 Meeting

DIETARY RISK ASSESSMENT

Long-term intake

The International Estimated Daily Intakes (IEDI) of dimethomorph, based on the STMRs estimated for 30 commodities, for the 17 cluster diets were in the range of 0–2% of maximum ADI (0.2 mg/kg bw), see Annex 3. The Meeting concluded that the long-term intake of residues of dimethomorph resulting from its uses that have been considered by JMPR is unlikely to present a health concern.

Short-term intake

The WHO Panel of the 2007 JMPR established an Acute Reference Dose (ARFD) of 0.6 mg/kg bw for dimethomorph.

The International Estimated Short Intake (IESTI) for dimethomorph was calculated for new food commodities and their processed fractions for which maximum residue levels were estimated and for which consumption data were available, see Annex 4.

For lettuce leaf, the IESTI represented 110% of the ARfD of 0.6 mg/kg bw. On the basis of the information provided to the JMPR it was not possible to conclude that the estimate of the short-term intake of dimethomorph, from the consumption of lettuce leaf, was less than the ARfD. The Meeting noted that an alternative GAP for lettuce leaf was not available.

For the other commodities the IESTI for dimethomorph calculated on the basis of recommendations made by the JMPR represented 0-90% of the ARfD (0.6 mg/kg bw) for children and 0-30% for the general population.

The Meeting concluded that except for lettuce leaf, the short-term intake of residues of dimethomorph, when used in ways that have been considered by the JMPR is unlikely to present a public concern.

REFERENCES

| Code | Author | Year | Title, Institute, Report reference |
|--------------|-----------------------|--------|---|
| 2005/1034175 | Moreno, S | 2005 | Study of the residue degradation of Dimethomorph in oranges after foliar application of Forum DC (Dimethomorph 150 g/L) under field conditions in Spain, season 2004. Agricultura y Ensayo SL, Alcala de Guadaira, Spain. Unpublished |
| 2006/1015076 | Moreno, S | 2006a | Study of the residue degradation of Dimethomorph in oranges after foliar application of Forum DC (Dimethomorph 150 g/L) under field conditions in Spain, season 2005. Agricultura y Ensayo SL, Alcala de Guadaira, Spain. Unpublished |
| 2006/1015077 | Moreno, S | 2006b | Study of the residue degradation of Dimethomorph in oranges after foliar application of Forum DC (Dimethomorph 150 g/L) under field conditions in Spain, season 2004-2005. Agricultura y Ensayo SL, Alcala de Guadaira, Spain. Unpublished |
| 2009/7002489 | Jordan, JM | 2009a | Magnitude of BAS 650 F and Dimethomorph residues in grapes following applications of BAS 650 00 F and Forum fungicide. BASF Agricultural Research Center, Research Triangle Park NC, USA. Unpublished. |
| 2005/1004964 | Schultz, H | 2007a | Study on the residues behavior of BAS 550 F in strawberries after treatment of different application rates of BAS 550 01F under field conditions and under glasshouse conditions in Germany, Belgium, The Netherlands and Denmark 2004. SGS Institute Fresenius GmbH, Taunusstein, Germany Fed. Rep. Unpublished. |
| 2010/1051738 | Schulz, H | 2010 a | Study on the residues behavior of BAS 550 F in strawberries after treatment of different application rates of BAS 550 01F under field conditions and under glasshouse conditions in Germany, Belgium, The Netherlands and Denmark 2004. SGS Institute Fresenius GmbH, Taunusstein, Germany Fed. Rep. Unpublished. |
| 2008/1051524 | Simek, I | 2008a | Study on the residue behavior of Dimethomorph in protected strawberries after treatment with BASF 550 01 F under plastic tunnel in Northern France, Germany, Netherlands and Belgium 2007. Anadiag SA, Haguenau France. Unpublished |
| 2006/1015075 | Moreno, S | 2006a | Study on the residue behavior of Dimethomorph in strawberry after dripping irrigation application of Forum DC (Dimethomorph 150 g/L) under field conditions in Spain, 2004. Agricultura y Ensayo SL, Alcala de Guadaira Spain. Unpublished |
| 2006/1015079 | Moreno, S | 2006a | Study on the residue behavior of Dimethomorph in strawberry after dripping irrigation application of Forum DC (Dimethomorph 150 g/L) under field conditions in Spain, 2004. Agricultura y Ensayo SL, Alcala de Guadaira Spain. Unpublished |
| 2008/1005528 | Bartolome, J | 2008a | Residue study (decline) with BAS 550 02 F applied to indoor strawberry in Spain and South France in 2007. Huntingdon Life Sciences Ltd, Huntingdon Cambridgeshire PE28 4HS, United Kingdom. Unpublished |
| DK-713-018 | Weitzel, R | 1994a | Dimethomorph: Residues in strawberries following treatment with PARAAT, 500 g/kg wettable powder under field conditions (the Netherlands, 1994). Cyanamid Forschung GmbH Schwabeheim, Germany Fed Rep. Unpublished |
| 2009/1112576 | Oxspring, S | 2009a | Study on the residue behavior of Dimethomorph in strawberry after treatment with BAS 550 01 F under field conditions in northern Europe during 2009. Eurofins Agrosience Services, Melbourne Derbyshire DE73 8AG, United Kingdom. Unpublished. |
| 2009/7004732 | White, MT | 2010e | Magnitude of BAS 650 F and BAS 550 F residue in bulb vegetables following applications of a tank mix containing BAS 650 00 F and BASF 550 11 F. BASF Agricultural Research Center, Research Triangle Park NC, USA. Unpublished |
| 2002/7013745 | Corley, J | 2002d | Dimethomorph: Magnitude of the residue on onion (dry bulb). University of California, Davis CA. USA. Unpublished |
| 2001/1026153 | Hamacher, M <i>et</i> | 2001b | Erstellung einer Abbaureihe und Rueckstandsbestimmung von Mancozeb |

| Code | Author | Year | Title, Institute, Report reference |
|--------------|-------------------------------|--------|---|
| | <i>al.</i> | | und Dimethomorph nach Anwendung von Acrobat Plus WG gegen Papierfleckenkrankheit an Porree. Pflanzenschutzdienst und Rueckstandslabor LUFA der Landwirtschaftskammer Rheinland, Bonn, Germany Fed. Rep. Unpublished |
| 2002/1019891 | Hamacher, M <i>et al.</i> | 2002c | Erstellung einer Abbaureihe und Rueckstandsbestimmung von Mancozeb und Dimethomorph nach Anwendung von Acrobat Plus WG gegen Papierfleckenkrankheit an Porree. Pflanzenschutzdienst und Rueckstandslabor LUFA der Landwirtschaftskammer Rheinland, Bonn, Germany Fed. Rep. Unpublished |
| 2002/1019892 | Hamacher, M <i>et al.</i> | 2002d | Gewinnung von Emteproben und Rueckstandsbestimmung von Mancozeb und Dimethomorph nach Anwendung von Acrobat Plus WG gegen Papierfleckenkrankheit an Porree. Pflanzenschutzdienst und Rueckstandslabor LUFA der Landwirtschaftskammer Rheinland, Bonn, Germany. Unpublished |
| 2002/1019893 | Offenbaecher, G <i>et al.</i> | 2002b | Rueckstandsbestimmung von Dimethomorph und Mancozeb in Porree. Pflanzenschutzdienst und Rueckstandslabor LUFA der Landwirtschaftskammer Rheinland, Bonn, Germany. Unpublished |
| 2007/1008491 | Diehl, M | 2007c | Study on the residue behaviour of BASF 551 00F in leeks (field) after treatment with BAS 551 00F under field conditions in Northern and Southern Europe, 2005. RCC Ltd., Itingen Switzerland. Unpublished |
| 2007/1008500 | Diehl, M | 2007d | Study on the residue behaviour of BASF 551 00F in leeks (field) after treatment with BAS 551 00F under field conditions in Northern and Southern Europe, 2006. RCC Ltd., Itingen Switzerland. Unpublished |
| 2013/7001787 | Schreier, T | 2013b | Magnitude of the residue of BAS 650 F (Ametoctradin) and BAS 550F (Dimethomorph) in green onion following applications of BAS 500F: Report of the magnitude of the residue of BAS 650 F (Ametodradin) and BAS 550 F (Dimethomorph). SGS North America Inc., Sycamore GA. USA. Unpublished |
| 2002/7013746 | Corley, J | 2002e | Dimethomorph: Magnitude of the residue on onion (green). University of California, Davis CA. USA. Unpublished |
| 2009/7006205 | White, MT | 2010 f | Magnitude of BAS 650 F and BAS 550 F residue in leafy brassica vegetables following applications of a tank mix containing BAS 650 00F and BAS 550 11F. BASF Agricultural Research Center, Research Triangle Park NC. USA Unpublished. |
| 2002/7013750 | Corley, J | 2002 f | Dimethomorph Magnitude of the residue on pepper (bell & non-bell). University of California, Davis. California. USA. Unpublished |
| 2009/7003324 | White, MT | 2010 g | Magnitude of BAS 650 F and BAS 550 F residue in leafy vegetables following applications of BAS 651 00 F. USA. Unpublished |
| 2001/5003305 | Corley, J | 2001 c | Dimethomorph: Magnitude of the residue on lettuce (leaf) IR-4 (Interregional Research Project No.4.) North Brunswick NJ. USA. Unpublished. |
| 2001/5003306 | Corley, J | 2001 d | Dimethomorph: Magnitude of the residue on lettuce (head) IR-4 (Interregional Research Project No.4.) North Brunswick NJ. USA. Unpublished. |
| 2003/7010215 | Corley, J | 2003 d | Dimethomorph: Magnitude of the residue on taro. Rutgers State University of New Jersey, North Brunswick NJ. USA. Unpublished |
| 2006/1032765 | Schultz, H | 2007 d | Study on the residue behavior of Dimethomorph and Mancozeb in green peas (field) after treatment with BASF 551 00F under field conditions in France (N) and Germany, 2005. SGS Institute of Fresenius GmbH, Taunusstein, Germany Fed Rep. Unpublished. |
| 2007/1005061 | Schroth, E and Martin | 2007 c | Study of the residue behavior of Dimethomorph and Mancozeb in green peas after application of BAS 551 00F under field conditions in Denmark, France (North and South), Germany, Netherlands and Spain 2006. Agrologia SL, Palomares Spain. Unpublished. |
| 2009/1069170 | Perny, A | 2009 e | Study of the residue behavior of Dimethomorph and Mancozeb in vining peas (canning peas) after application of BAS 551 00F under field conditions |

| Code | Author | Year | Title, Institute, Report reference |
|--------------|------------------------------|--------|--|
| | | | in Northern France, Germany and the Netherlands, 2008. Anadiag SA, Haguenau, France. Unpublished. |
| 2007/7016820 | Corley, J | 2007 c | Dimethomorph: Magnitude of the residue on bean (lima) IR-4 Project Headquarters Princeton NJ. USA. Unpublished. |
| 2013/1335899 | Corley, J | 2013 a | Dimethomorph: Magnitude of the residue on bean (lima) IR-4 Project Headquarters Princeton NJ. USA. Unpublished. |
| 2007/1068765 | Corley, J | 2007 d | Dimethomorph: Magnitude of the residue on ginseng. Center for Minor Crop Pest Management, North Brunswick NJ. USA. Unpublished. |
| 2008/1068911 | Perny, A | 2008 c | Study on the residue behavior of Dimethomorph and Pyraclostrobin in artichokes after treatment with BAS 536 01 F under field conditions in Northern and Southern France, Germany, Italy and the Netherlands, 2006. Anadiag SA, Haguenau France. Unpublished. |
| 2009/1013323 | Perny, A | 2009 f | Study on the residue behavior of Dimethomorph and Pyraclostrobin in artichokes after treatment with BAS 536 01 F under field conditions in Northern France, Germany, Italy, Southern France and Spain in 2007. Anadiag SA, Haguenau France. Unpublished. |
| 2012/1002401 | Plier, S | 2013 | Determination of residues of BAS 550 F (Dimethomorph) in oranges (sweet) and their processed products after two applications of BAS 550 02 F in Spain. BioChem agrar Labor fuer biologische und chemische Analytik GmbH, Gerichshain, Germany Fed Rep. Unpublished. |
| 2009/1041521 | Braun, D | 2009 a | Determination of residues of Dimethomorph in strawberries and their processed products after one application of BAS 550 01F in Germany. BioChem agrar Labour fuer biologische und chemische Analytik GmbH, Gerichshain Germany Fed Rep. Unpublished |
| 2010/1093126 | Harant, H | 2010 a | Determination of residues of BAS 650 F and BAS 550 F (Dimethomorph) in onion and its processed products after two applications of BAS 651 00 F in Germany. BioChem agrar Labor fuer biologische und chemische Analytik GmbH, Gerichshain Germany Fed.Rep. Unpublished. |
| 2008/1004853 | Klimmek, S, and Gizler, A | 2008 | Study on the residue behavior of BAS 650 F and BAS 550 F in lettuce after three applications of BAS 651 00 under field conditions in Denmark, Northern and Southern France, Germany, Greece, Italy, the Netherlands and Spain, 2007. Eurofins Analytik GmbH, Hamburg, Germany Fed.Rep 2008/1004853. Unpublished. |
| 2007/1044681 | Haranth, H | 2007 a | Determination of residues of Dimethomorph (BAS 550F) and Mancozeb (BAS 266 F) in fresh peas its processed products after two applications of BAS 551 00F in Germany. BioChem agrar Labor fuer biologische und chemische Analytik GmbH, Gerichshain Germany Fed Rep. Unpublished. |
| 2010/1089351 | Seiferlein, M | 2010 a | Summary of validation data for the method AGriquem PE-804 for the determination of BAS 550 F (Dimethomorph) in citrus fruit BASF SE, Limburgerhof, Germany Fed Rep. 2010/1089361 |
| 2009/1051339 | Strobl, M | 2009 a | Validation of BASF method L0138/01-Method of the determination of Dimethomorph (BAS 550F) in animal matrices. BASF SE, Limburgerhof, Germany Fed Rep. Unpublished |
| 2009/1078429 | Wolf, S | 2009 a | Independent laboratory validation (ILV) of an analytical method for the determination of Dimethomorph (BAS 550 F) in animal tissues (milk, egg, muscle and liver). Harlan Laboratories Ltd., Itingen, Switzerland. Unpublished |