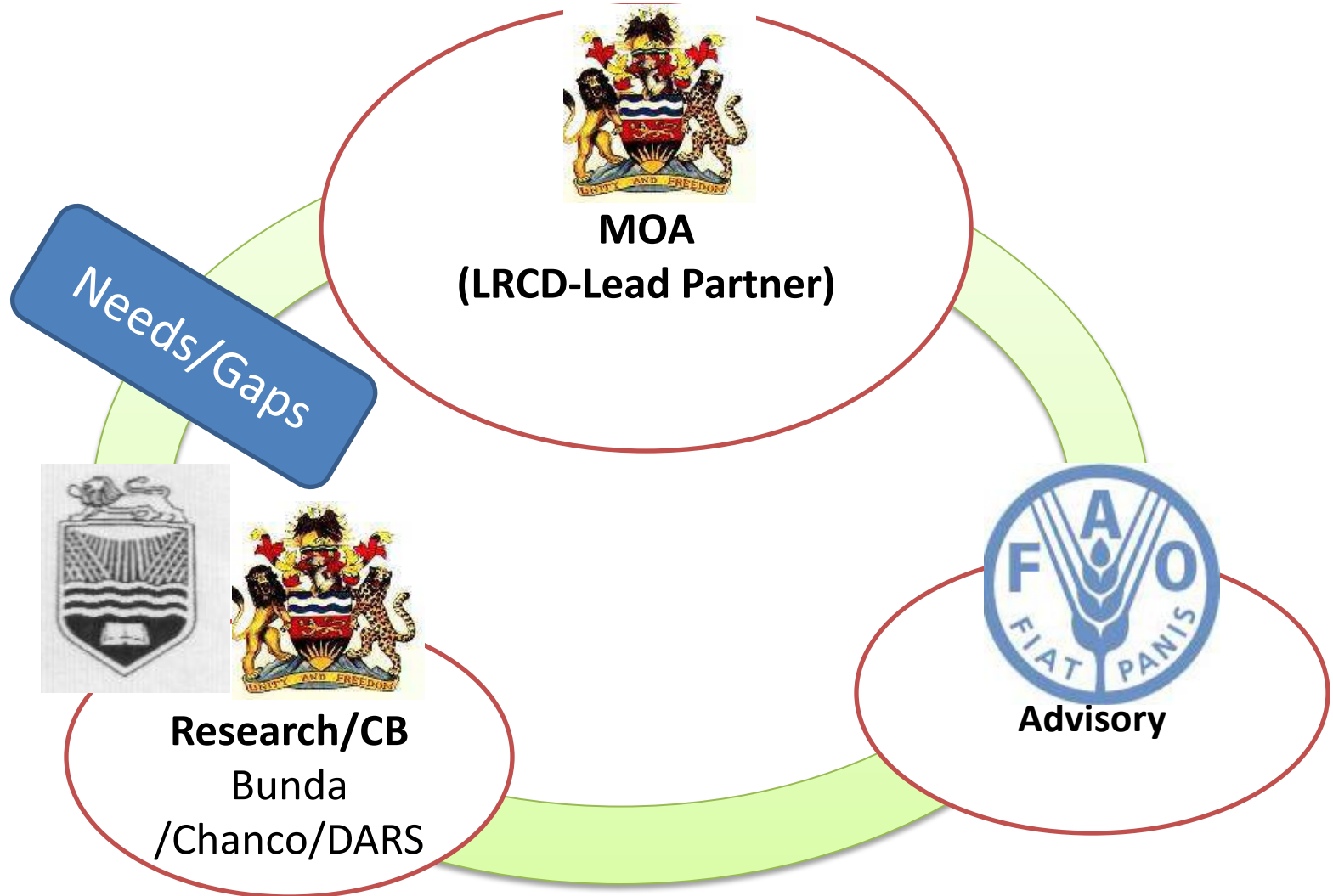


# **CSA- Implementation and Coordination Arrangements- Case of Malawi**

**Mutie Kachulu**

**CSA Launch and Inception Workshop for Zambia  
Ibis Gardens-Lusaka, Zambia  
10<sup>th</sup> January 2013**

# The Main IPs





# MoA Role (LRCD)

- Project coordination (general)
- Identification and costing of CSA options
- Preparation of CSA strategic document
- Development of investment proposals and linking business models to smallholder agriculture
- Arranging training for policy makers, technical staff (frontline) and farmers on CSA
- Review and development of Agriculture frameworks from studies



## Unima Role (Bunda)

- Undertake research on CSA (MSc/PhD and other research as required by need from MoA)
- Review and identify feasible CSA options
- Analyse CSA datasets and formulate policy briefs
- Facilitate knowledge sharing and interactive learning on CSA



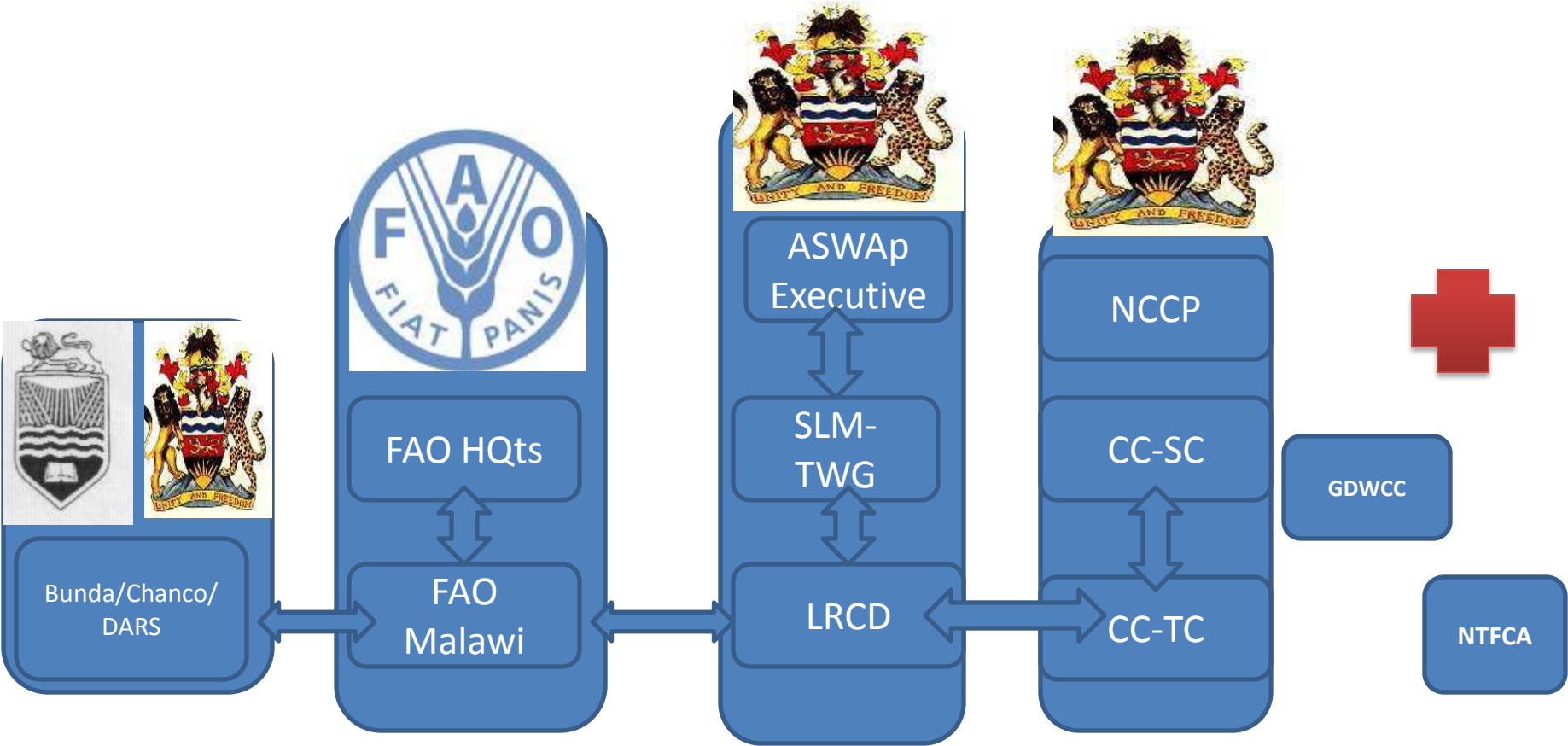
# Role

- Project coordination and advisory services
- Facilitate Policy dialogues on CSA
- Facilitate development of CSA Investment proposals
- Facilitate Review Agricultural Policy and strategies
- Support to national delegation in UNFCCC negotiations
- Support CSA Research with research institutions
- Support institutional capacity building of staff on CSA with MOA

# The Project Core Team

- **Membership**
  - LRCD- Chairperson
  - DAES
  - EAD
  - Bunda College (Dean Faculty of ENRM)
  - FUM/Farmer Rep
  - FAO
- **Role**
  - Approve work plan and budget
  - Monitor progress
  - Quality control/assurance on outputs
  - Advise on links with other CSA activities in country (relevance)

# Coordination arrangements





# THE END

*Information = The differences that make a difference*