

Territorial strategic planning to restore the production and protection capacity of landscapes in Brazil's Eastern Amazon



Jaqueline de Carvalho Peçanha
René Pocard-Chapuis
Marcelo Cordeiro Thalês
Marie-Gabrielle Piketty

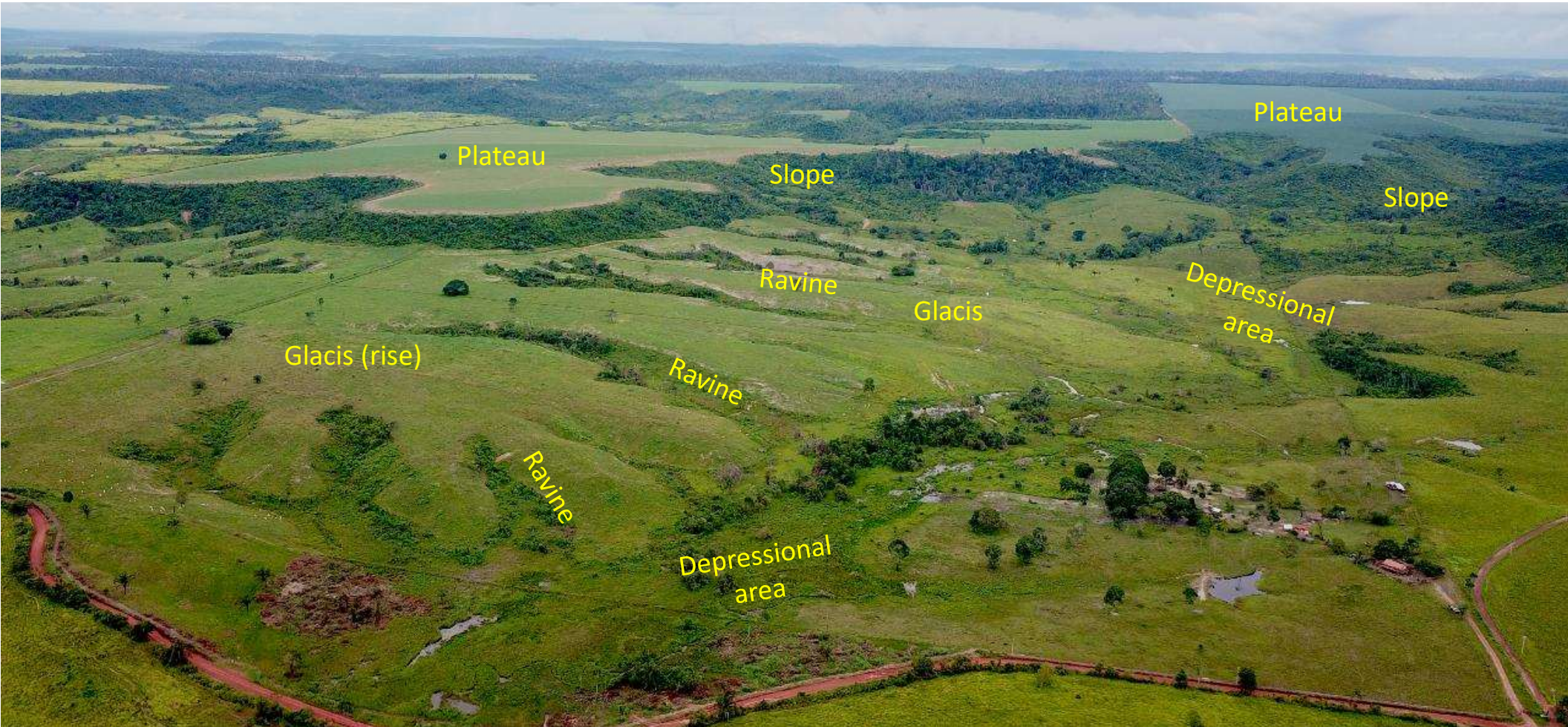
Agrarian transition in Pará state: from deforestation to post-frontier territories

	All Pará state	Deforestation territories	Consolidated / post-frontier territories
Number of municipalities	144 municipalities	18 municipalities	126 municipalities
Share of Pará recent deforestation (2017-2019)	970.750 Hectares	77 %	23 %
Share of Pará resident population (2017)	8,3 millions	10 %	90 %
Share of Pará Gross domestic product (state level, 2017)	R\$ 155 billions	8 %	92 %
Share of Pará Agricultural Value Added (2017)	R\$ 16,7 billions	19 %	81 %
Share of Pará Industrial Value Added (2017)	R\$ 43,8 billions	3 %	97 %
Share of Pará Soybean planted area (2017)	501.000 hectares	4 %	96 %
Share of Pará Bovine herd (2017)	22,1 million heads	38 %	62 %

A few number of municipalities is persisting in deforestation, and a large part of Pará state is under control, with higher socio-economic weight. Policies need to be geographically specific.

Agrarian transition in Post-frontier territories

From mining natural resources, to managing landscape suitability's



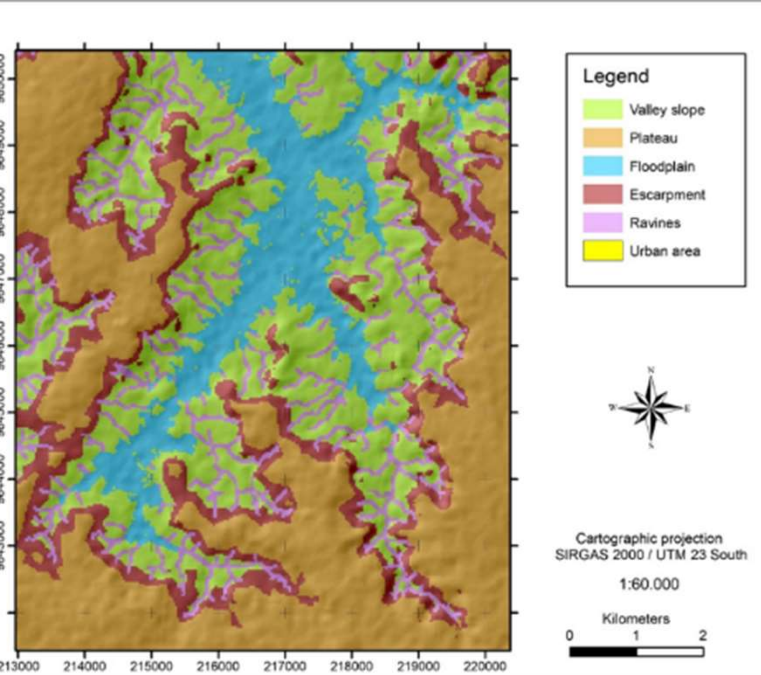
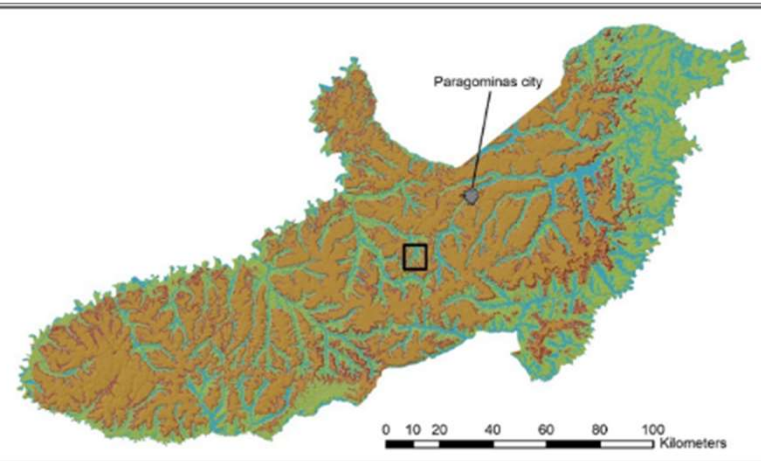
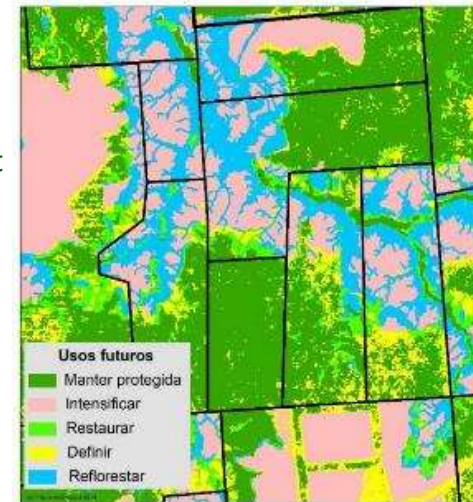
Microzoning law in Paragominas municipality

Mapping Land suitability at jurisdictional level to drive farm practices

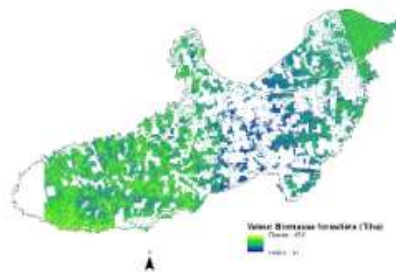
Public policies linked with zoning:

- Compliance to Forest Act to achieve legal forest cover
- Municipal license for agricultural production
- Green Finance

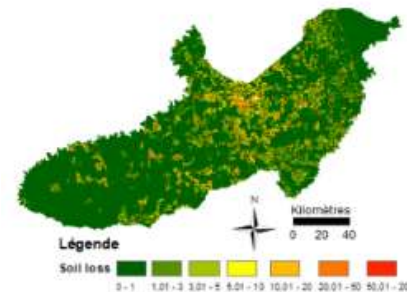
Measurement Reporting Verifying (MRV) at jurisdictional level to attract investors



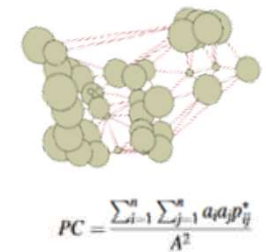
Forest Biomass

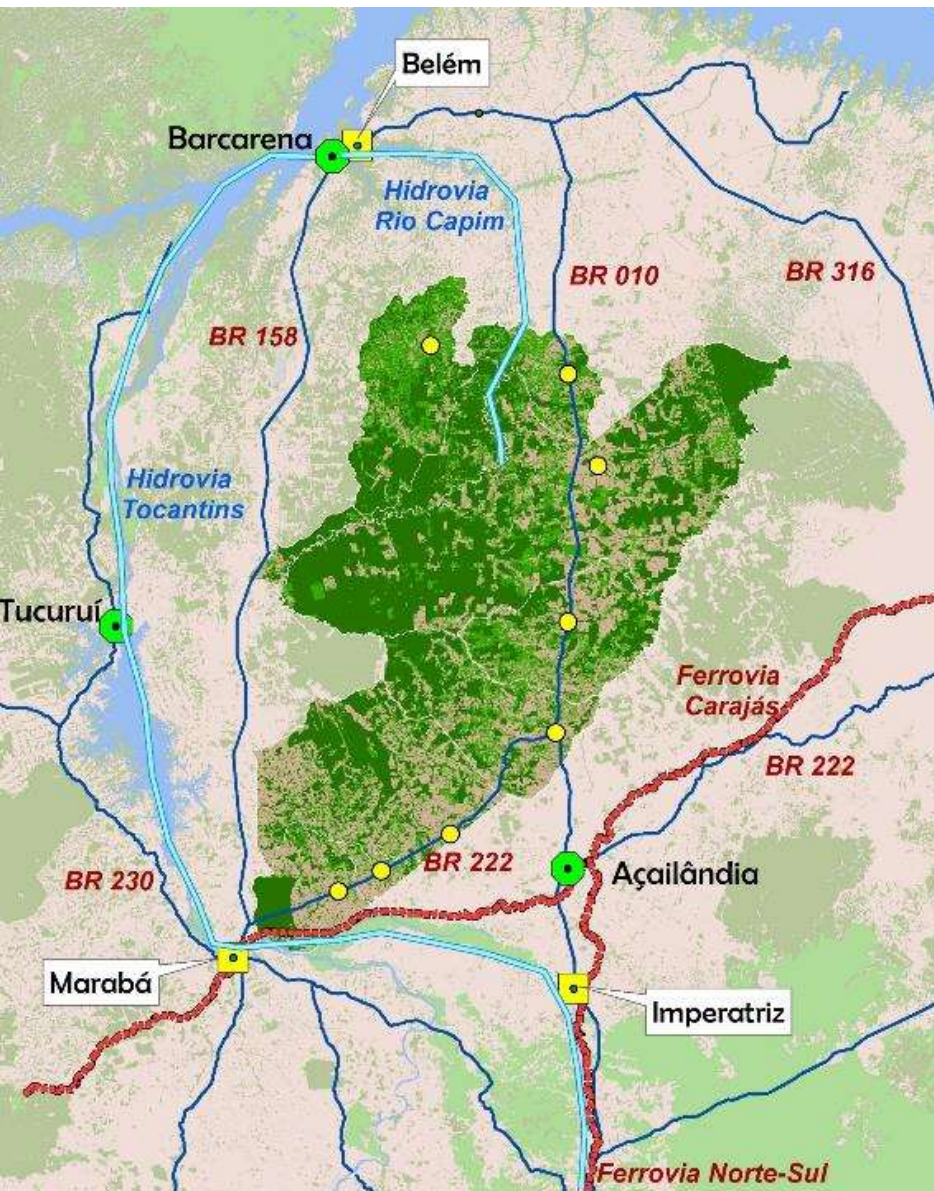


Soil Erosion



Connectivity (PC index)





Community of post-frontier municipalities in Eastern Pará state

- 424.000 inhabitants
- Gross Domestic Product / Year : R\$ 6,5 billions
- 1,7 millions hectares in Agricultural productions (33%)
- 3,5 millions hectares in Forest (67%)
- 200.000 hectares planted in soybean
- 1,1 million bovines

Conclusion



- Local jurisdiction is a key level to reorganize landscapes. Needs are :
 - Municipal typologies (forest transition)
 - Institutional consolidation at local level
 - Institutional coordination with state level
 - Green finance at jurisdictional level
- At farm level, priority to promote agricultural intensification:
 - Economy and environment are linked, not in contradiction
 - Forest restoration is a consequence of agriculture intensification
 - Microzoning is a powerful complement of Forest Act, to promote forest restoration



THANKYOU!

Jaqueline.carvalho@nepmv.pa.gov.br

