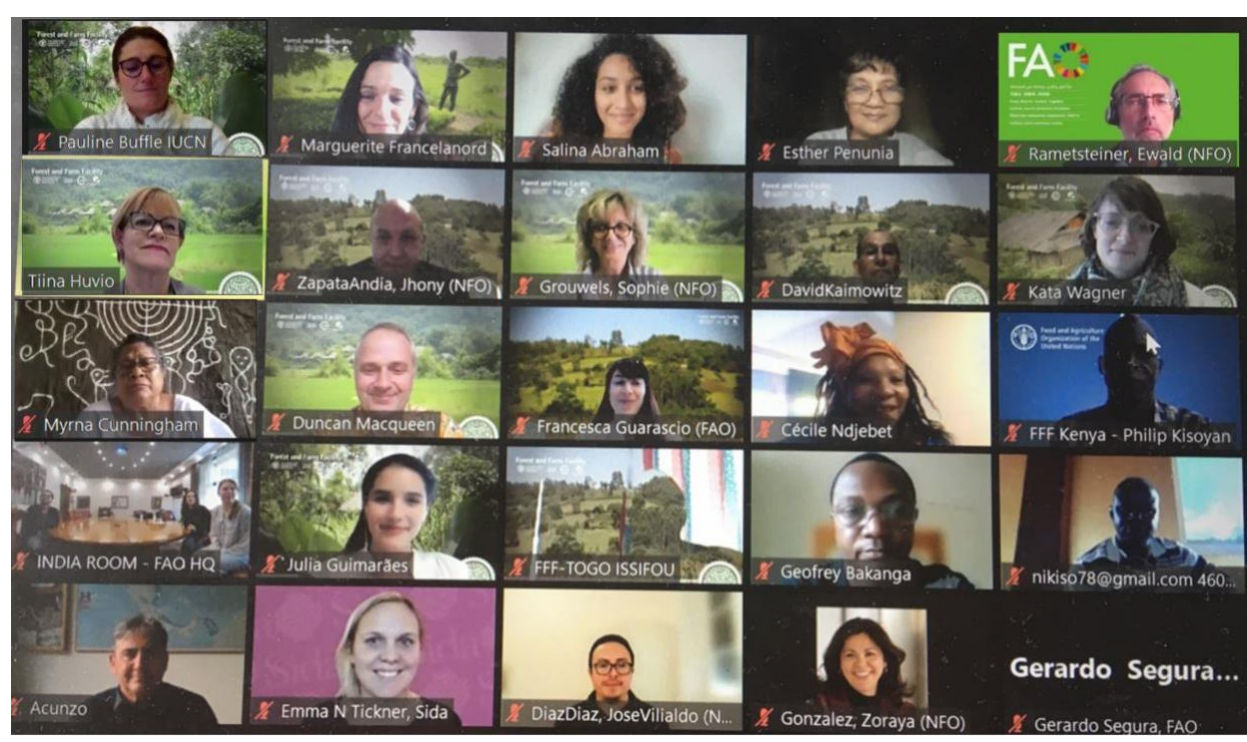




Forest and Farm Facility

Minutes of the Steering Committee meeting

16-18 March 2022, Hybrid, FAO HQ



Summary of agreed decisions

- 2021 Steering Committee (SC) minutes approved by Steering Committee
- 2021 Annual Report and budget approved by Steering Committee
- 2022 Workplan endorsed by Steering Committee
- Next Steering Committee meeting planned for 3 October 2022, in Rome (in person)

Day 1: Wednesday, March 16th

Central Theme: What happened in 2021?

Introduction

Self-Introductions: Tiina Huvio, Chair of the SC, opened the meeting by asking the participants to introduce themselves.

Formal welcome (Tiina Vähänen, Deputy Director, Forestry Division, NFO)

- Welcome to the Forest and Farm Facility (FFF) SC meeting. The FFF is critical to FAO. Firstly, because it works directly with Forest and Farm Producer Organizations (FFPOs) and Indigenous Peoples (IPs) organizations, ensuring that the knowledge and support reaches the ground level, where it is needed. Secondly: FFF complements FAO's mandate. Thirdly: FFF contributes to FAO's mandates in the implementation of two UN Decades - Family Farming (led by the International Fund for Agricultural development) and Ecosystem Restoration (led by FAO and the UN Environment Programme). Finally, the FFF is innovative and provides a platform for partnerships to flourish between FAO and IIED, IUCN and AgriCord.
- FAO has a new strategic framework for the next ten years guided by the Sustainable Development Goals (SDGs) and is built around the Four Betters. Key focus of this new strategic framework is the transformation of agri-foods systems to be more efficient, inclusive, resilient, and sustainable. Fit for purpose exercise was carried throughout the Forestry Division to align the division with the new framework. With this exercise, three priority workstreams were defined: 1. Halting deforestation and enhancing resilience, 2. Mainstreaming biodiversity and restoring forest ecosystems, 3. Enhancing sustainable production and livelihoods. Our priorities are aligned with the FFF.
- Brief update on recruitment of FFF manager: Remains in D1 level and the expectation is that there will be a new hire before Summer 2022 or during Summer at the latest.

Introductory comments (Ewald Rametsteiner, Manager Officer-in-charge FFF, FAO)

- Highlighted the decade-long journey of the FFF. We had a larger budget last year (2021) and a largely positive Mid-Term Evaluation (MTE). He further emphasized the recommendations of the evaluation, and that youth, gender, and IPs are at the heart of FFF's initiatives. The future looks promising considering the world's environment (i.e., COP26, which reinforced the importance of forest at the policy level and the role of Indigenous Peoples and Local Communities (IPLCs) and the importance of practical changes). These things are embedded in the work and philosophy of the FFF. In FAO, we have a strong focus on working across sectors. The name of the FFF is at the centre of where FAO is moving - agroforestry, charcoal, bioenergy – all which FAO is very interested in. We must also think about how to scale up these initiatives.

Reflection on the moment (Chris Buss, Director Centre for Economy and Finance, IUCN)

- Congratulations to the team. Emphasized the critical role played by the MTE in re-shaping the focus of the FFF – including the focusing of landscapes. It is critical to focus on IPs and producers, strengthen narratives, and take the opportunity to aim

at large-scale investment projects (i.e., GEF (Global Environmental Facility) and GCF (Green Climate Fund)) and scale-up financing actions. There is still much to be done to get investment in the right places for IPs and local producers – we have the opportunity to influence large scale investment projects.

- FFPOs must be the protagonists and key decision-makers, they must be equipped with the right tools and knowledge. They must be the drivers of development.
- Emphasis on strategic communications: influence on global policy. We saw in COP26 that IPs are at the centre of development dialogues, and we can do the same for farmers.
- On the operational framework: How can we expand the partners' roles? Increase the experience and values of each partner? In IUCN for example, there has been some wonderful work on the membership of IPs, research, and knowledge, in collaboration with IIED and AgriCord. We can build on those, adjust the finance mechanisms to ensure the partnership is growing.
- Over the years we have seen a shift from forest to farm organizations. It is critical, where we can, to spot global apex organizations, but also to work from the ground in landscapes. These organizations are critical to restoration.
- As seen in the MTE, we have started a dialogue to influence large-scale investments. That is where we are seeing how to mobilize targeted finance, not only at the local but also global level.

Meeting objectives, agenda, and procedures (Tiina Huvio, Programme Director, FFD)

- Tiina, as SC Chair, presented the objectives of the meeting, the roles of SC members and the agenda of the SC, as well as the decisions by the previous SC meeting. She then read the recommendations from the previous SC meeting from March 2021.
- The suggestion of the MTE was to have two SC meetings and break them down by topic/priorities in 2022.
- **The minutes of last SC meeting were approved, and the SC members went through the recommendations given. It was decided that those would be analysed during the report session.**

New Steering Committee members reflection on FFF

- **Esther Penunia**, Secretary General, AFA: Video introduction (technical difficulties, see introduction at the beginning of the general SC discussion)
- **Diego Pacheco**, Head of Bolivian delegation to UNFCCC and CBD: Multidisciplinary training/degree in Anthropology, Master's Degree in rural resources and environmental policy. PhD in Public Policy. Involved in forestry studies, institutional analysis and development framework and governance. PhD thesis in community forestry and decentralization, emphasis on IPs. Areas of interest: interactions between nature and society at different levels, addressing the issues of sustainable development, emphasis on IPLCs. The FFF is an important instrument and tool in changing the lives of indigenous and local communities. Highlighted expertise in natural resources, local communities, supporting community forests and traditional

agriculture, food systems, organizations of the communities and local people, improving living conditions. Based in Bolivia. Head of Bolivian Delegation of UNFCCC Bolivia and CBD. Used to be advisor of the Amazon Cooperation Treaty Organization and Vice Minister of Planning and Development of Bolivia. Headed negotiations in alternative approaches for payments at the UNFCCC. Led establishment of IPs local community platform at UNFCCC. At CBD, enhanced recognition of role of collective action of IPLCs, establishment of participatory mechanism for linking discussions of academia and systems of knowledge. Work was reached with understanding of southern ontology/epistemologies of “living well” (*buen vivir*) with Mother Earth. Coordinated development of national legislation in Bolivia regarding the law of Mother Earth and the right of Mother Earth. “I want to use my experience to contribute to the FFF and try to improve the lives of IPLCs, including women and girls, and communities involved in forestry issues and food systems.” Work of FFF is relevant to national and international scenarios and is responsive to the needs of forest-dependent people. Enhancing governance plays a key role, as well as the development of entrepreneurial skills, while respecting and strengthening traditional skills. We must promote the scaling-up of local initiatives and highlight the role and contribution of community forestry to climate action. Currently working on this issue in the CBD and UNFCCC.

- **Victor Lopez**, Programme Officer, Ford Foundation: Thank you for inviting me. I am a Programme Officer at the Ford Foundation at our international programme network of resources and climate change, which works on topics, regions, and constituencies closely linked to the FFF. Leads Climate and Land Use Alliance for Mexico and Central America. Expects to bring to the Steering Committee ideas and bridges to the philanthropic community. Devoted to indigenous and multicultural local communities throughout career, started in Guatemala. Since 1996 has been working in different roles: cooperative manager, forest fire fighter, coordinator, and later on director of the National Network of the Community Forestry Associations. Part of the Mesoamerican Alliance of Peoples and Forests and founded initiative of Youth Leadership at School.

2021 Results on programme & budget

David Kaimowitz presented the results of the Forest and Farm Facility in 2021 under three broad themes: continuity, consolidation, and change.

From the Food Systems Summit through COP26 in Glasgow

Pauline Buffle presented the global and regional partners’ engagement in the international dialogue and major events in 2021. She showed a short video with some highlights of the achievements of the global campaigns and advocacy efforts.

General SC discussion

Esther Penunia joined recently the SC meeting: Secretary General of Asian Farmers Association for Sustainable Rural Development, with members in 16 countries, 22 National Farmers Organizations. Partnership with FFF has enabled association to articulate perspectives of members in forested landscapes and develop agenda for sustainable forest management and sustainable forest-based livelihoods. Built capacities of young farmers committees in 10 countries. Looks forward to highlighting the impact on agriculture and farmers by climate change at COP27. Sees FFF as essential in strengthening agency of farmers in forested landscapes and grassroots organizations and reach sustainable livelihoods, while responding to the issues of climate change.

The SC appreciated the quality, visibility, and improved focus of the 2021 reports. The SC appreciated the efforts to provide quantitative data and the qualitative changes in the FFF approach. They were easy to read and to visualize well the achievements.

1st set of questions and comments

Elizabeth: Appreciated the presentations by David and Pauline and the spotlight on the SC recommendations from the last meeting. Appreciated the structure of the report, gives a clear position and the SC can follow up on what has been achieved and has presented numbers. Numbers are related to activities, for example in capacity building. SC can understand target audience as well as the numbers of the trainings that were conducted. Focus areas were highlighted, for example the issue of mitigation of FFPOs' access to finance. New direction of focusing on IPs, and opportunities for youth and women. The interesting part of the report is that there is a focus on value addition. Multiple value-added products, how to transform products to reach more resources. Fundraising: there was an increase. Report highlights next three-four years to continue supporting FFPOs. Communications has also improved – presence on social media has increased. Partnerships and alliances: new plans being developed, new ways of planning, new funding mechanisms. We are on the right direction. Opportunities for participation on global events have also been highlighted. Question: We did not capture if we had any grant activities unachieved due to COVID – i.e., due to travel limitations. Any activities that were pushed to 2022 or cancelled? Challenges: few information on key challenges faced by FFF as an institution and in the implementation of projects. Mentioned by Pauline: out of Glasgow, USD 1.7 billion were committed to IPs. Question: is there a mechanism in place or roadmap as to how IPs and local organizations are going to be supported to access climate financing?

Myrna: Congratulations to the team for the achievements in 2021. Format of presentation was appreciated. Appreciated efforts to come up with numbers to show what has been done. I am sure we are also working on qualitative, not only quantitative changes. It would be good to know what the changes were, for example, in relation to the difference between farmer organizations and IPs in this learning process. Second aspect appreciated: focus on IPs that do not identify as producers or are not organized as what we understand as producers' organizations – they are organized differently. Appreciated scaling-up with financing (i.e., GEF). Global advocacy: it is important to highlight that what was

accomplished last year at the global level (COP26) was due to the efforts of over 30 years of IPs in advocacy. It is important to highlight FFF's contribution, but the result was from IPs advocacy for many years. Regarding the money that was committed to IPs, there is no clarity on how this will be implemented, though. Advocacy work this year should focus on this – and involve IPs in the discussion.

1st set of answers

David: Question on challenges is important, we have not presented much on challenges. A couple to be highlighted: COVID, not only in terms of things that have been cancelled (i.e., Viet Nam conference), but it was impossible for Rome-based staff to visit any of the countries. Everything was done via Zoom and email - we missed quality information and quality exchanges. Broader challenge that FFF faces: keeping track of what is going on with hundreds of organizations. When you have visits you get detailed information. Country facilitators send information – but it is hard to notice the dynamics from Rome, or even in countries, with the facilitators, who coordinate 30 or 40 organizations. Another challenge to highlight: relatively weak capacity of farmer organizations to get their messages out there, use social media, communicate, especially in comparison to IPs organizations, who are very much geared towards advocacy and are used to it. Organizations are more like businesses while IP organizations are more policy-driven, orientated to the dialogue. Challenge moving forward: internal difficulties in FAO and coordinating with donors to change project document. It has been agreed upon, but to update the project document within FAO is hard, it is difficult to manoeuvre the bureaucracy. If there is a significant change, each donor must formally sign off on it, which will be an issue. On the IPLC pledge: FFF was involved in bringing IPLC representatives to COP, but this was not our main participation. Main participation was sitting with donors at the meeting and the foundations as pledge was being developed. David was in the meetings. Five governments involved: Norway, US, Germany, UK, and the Netherlands – 15 or so foundations, 9 are in the pledge for the planet. Pledge says: we commit to spend X USD on IPLCs' rights and forest management. Does not directly fund organizations or create a common fund or mechanism. Each will spend according to own policies.

2nd set of questions and comments

Pacita: Despite the pandemic, the team did a good job, because it is very challenging to conduct everything remotely. Appreciated the presentation. Do we also have reports on problems with IPs who do not want to get vaccines? There is such a situation in Philippines. In the region, there is fake news about it and many people will not get vaccinated, which impedes us from having in-person activities.

Tiina: Liked the way it was presented. Mixed feelings about the global financing/pledges numbers and figures – it may create a false feeling that this is an integral part of FFF and that the FFPOs will be a part of the implementation. In one page it recognizes that it is still a challenge that these big mechanisms have their own internal mechanisms, approaches, and systems on how to reach the ground level. How will FFF influence these pledges or big

mechanisms/projects in GEF and GCF – how will we reach them? How can we strengthen the position of FFPOs as parties that influence the money allocation?

Victor: First question - 1) Development of Direct Beneficiary Grants (DBGs): what are the criteria for differentiating this grant between other grants? Adding the terms of funding to the report would help to understand rates and other details. 2) As a part of FFF, do the partners (IIED, IUCN, AgriCord) contribute with other matching funds or non-monetary resources? When is LoA and when is DBG the suggested model of operation? What are the criteria of difference between DBGs and other funds?

Mario Congratulations for excellent report. I want to underline the impact of FFF on FAO procedures, i.e., the DBGs and the work in the Family Farming unit. Relevance of communications work: i.e., global advocacy. Communications is essential for FFF because capacity at the local level is necessary to support processes and knowledge sharing, managing information.

2nd set of answers

David: With regards to Tiina's question, looking back at 2021, we tried to have a dual/triple track approach on how to influence these big funding processes: 1) Systematically try to find opportunities for farmer, IP, and women leaders to speak on their own behalf at these forums and identify where they can speak up. 2) Ramp up the media work and increase narratives in the media to influence governments. Collaboration with communications machines of FAO, IUCN and IIED was essential for this. 3) Direct participation of FFF staff from different organizations at meetings with officials.

Jhony: On Victor's first question, criteria to decide which types of grants fit under which project: when we use LoAs for service provisions to FAO means an organization has equal or better capacities in relation to FAO to provide services. This is not the case of producer organizations, so we use the mechanism of the DBG, whose purpose is to provide funding to organizations to strengthen their capacities, recognizing their force to strengthen themselves. This instrument is very good for building their capacities and providing funding for inputs and small equipment, things that are not possible with the LoAs. We have piloted this successfully. We selected this based on the countries' feedbacks. Three countries wanted to pilot this, for example Bolivia, where we will pilot all money through DBGs. In the matching grants scheme, we recognize that producer organizations are committed to contributing with funding, and FAO contributes with what is missing. We have not yet piloted but are considering this.

David: On the question of implementing partners – part of a discussion that began last year. Up until now, each partner encourages donors to fund FAO, and FAO would use this money to fund activities of implementing partners. In part it was not easy to raise as much money as hoped, also because mechanisms of FAO are not very accommodating for partners. Little incentive for IUCN/IIED/AgriCord to raise money to go to FAO and back, it makes more sense to fundraise for themselves. It has been tricky to find a funding mechanism that works for this programme. We are progressing in finding new ways to find money for partners, i.e., GEF drylands Impact Program, where IIED will receive funding for FFF activities, and it is

easier this way. We are looking for a more flexible mechanism, rather than LoAs. FAO is not set to organize these sorts of partnerships. The other implementing partners are spending money on activities similar to FFF that are not accounted for. We are looking for ways to allow other partners to raise money for FFF activities directly for themselves.

Steering Committee members approved the FFF 2021 annual report.

Closing remarks and announcements

Tiina: We have seen through this meeting the reality and challenges of managing a program overseas – the technical challenges. We work with people in many different places, extremely active, on and off the field – people who are working directly with the beneficiaries and who have diverse experiences. Thank you to the SC members, donors, and management team.

Elizabeth presented closing remarks for the meeting: Thank you to all donors and partners. Thank you to the secretariat for excellent work that has been showcased – we have seen numbers in capacity building, policies, and value addition. Welcome to new SC members. Thank you to our partners, who contribute both financially and with human resources. Thank you to our chair, Tiina. We need to explore the full potential of opportunities that exist within institutions that we represent as a SC. Engaging, for example, bilaterally, and tapping into the low-hanging fruits that exist. Most organizations do a lot of work in the UN Decade of Family Farming, this is an area that we could explore. We must strengthen current partnerships and put in extra effort to build new partnerships. Explore opportunities presented by global events, especially COP27, which will take place in Africa. Explore opportunities for FFPOs to have a place and unified voice. We must mobilize climate finance to promote activities to support climate resilience and forest land restoration activities.

Day 1: Key recommendations for action

- **Scaling-up:** Through large-scale funding mechanisms and the expansion of FFF partners' roles, as well as the exploration of the full potential of opportunities that exist in institutions that are represented within SC, FFF can scale-up its initiatives.
- **Large-scale funding mechanisms:** FFF must define and execute a strong strategy to influence large-scale funds and place FFPOs as protagonists of related decision-making processes. FFF must strengthen the position of FFPOs as beneficiaries and parties that influence the money allocation.
- **Internal funding mechanisms:** FFF should continue exploring and piloting new options of funding mechanisms based on the success of the Direct Beneficiary Grant model, including a better, more flexible mechanism for funding partners as well.
- **COP26 pledge to IPLCs:** FFF Should support IPLCs in involving IPs in the dialogues and decision-making processes related to the application of the promised funds.
- **COP27:** explore opportunities for producer organizations and local communities to unify their voices and agree on common priorities, in order to raise additional funding resources for the climate actions that they are implementing.

Day 2: Thursday, March 17th

Central Theme: Deep Dives on Topics of Strategic Importance

Recap – Proposed agenda for the day

Pauline moderated the meeting on Day 2 – begun by recapping the agenda for the day.

Implementing MTE recommendations and the Steering Committees' comments on them

Jhony presented the update on the implementation of MTE recommendations. He informed the SC that a team member has been nominated to follow up on the recommendations and systematize the management's response.

Questions and comments

Tiina: Formidable list of actions taken. 1) We discussed this previously, how are you dealing with the coordination with new actors given the limited number of people in HQ? How will you cope with the additional workload? 2) There was the question on shifting to more focused landscapes – it is important to emphasize the role of organizations in the landscape, not only the landscape as such. Were there cases in which you had to change the organizations you were working with to accommodate the landscape approach? 3) When you start experimenting with the carbon sequestration tools there is an issue on how to empower people to take part on this, since it is expert driven. How are we going to ensure that farmers drive numbers and not the contrary?

Victor: Great work of summarizing the actions, I can imagine it was an intense process. My question builds on Tiina's points: 1) I want to understand better the view in terms of piloting carbon-sequestration monitoring because it can be quite complex and expensive. There are competencies of public institutions in the country, but how much will it cost to local organizations and producers?

Myrna: 1) Could you provide more information on the matching grant schemes? Their different modalities? How will you value the inputs that comes from local producers and local knowledge holders? 2) The second question relates to: I understand the landscape approach and maintaining the producers as the central focus, but in the territorial organizations aspect it is not easy because the territorial organizations are not based on production but on other interests. How will you make this compatible? Going to territorial organizations and maintaining focus on producers and maintaining the landscape approach? 3) On the carbon sequestration approach, I feel like it is very top-down, not in the interest of producer organizations. Do you have any comments? Can you share more information about that?

Cécile: I share similar concerns with the FFF management team on not building high expectations on carbon sequestration tools while the basis has not yet been secured. It is

important that the communities know the regulations on carbon accounting. Very happy to learn on the linkages with the two current UN Decades. Our communities are the same target group, dealing with family farming.

Anna: One question regarding the carbon monitoring tools: In addition to public actors, is there interest for partnerships with private actors? Are there other value chain actors with similar interests? Cocoa, and other commodities, have private actors investing in these tools – could there be another partnership?

Salina: Having looked at the recommendation to move beyond small grants - in the presentation there was a focus on outreach with GEF, GCF, and AFR100 – seeking strategic expansion of the programme. I was curious if this is the communications strategy in terms of the global influence and narrative or is this an activity in the suite of other priorities.

Answers

Jhony: With regards to the participation of the FFPOs and local organizations in the tools - we learned from the FFPOs that they are motivated to learn tools if they bring direct benefits to them. For example, advocacy training helped them push for better policy reforms. Business incubation training helped them formulate better business plans. We have a good example in Kenya – they did not know the value of the trees they have, so we taught them how to do the trees' inventories, and it turns out that they have 12.5 million USD value in their trees, and they are now able to better negotiate prices. We think that if they believe that this is a priority, and they could assess their own contribution to carbon sequestration, they could advocate at the local and national level for the producer organizations. They have not yet been invited to these meetings to advocate for themselves, but our idea is that they can be trained and have a place on the negotiation table. On the matching grant scheme: it is an innovative tool. The LoAs are not adequate, because it basically means that the service provider who received the funding can execute a project better or at the same quality level as FAO, which is not the case. In the direct beneficiary grants we provide them with funds to strengthen themselves and hire consultants. With the matching fund – if the producer organization has an initiative, they contribute with part of the funds, while FAO contributes with the rest - they invest in their own idea – they believe in it. They want to own a part of the idea. It will change how we see producer organizations; they are our allies, we work together.

Duncan: On the carbon sequestration tools: We are trying to understand what tools there are out there and then analyse which might be appropriate for the FFPOs. We have resource partners who are excited by the potential of IPS and FFPOs to manage forests sustainably and restore forests. We have many forest and farm contexts, from natural to agroforestry, to degraded landscapes – there are many tools that allow people at different levels to quantify those changes in the landscapes and so in this year we are responding to the MTE by trying to better understand the full range of ways in which you can measure and quantify changes in forest landscapes. From mapping to ground based inventory to complex satellite-based monitoring. Not all tools will be used at the organizations' levels, but we must understand which will have and in what context so we can base future work on that. We

have hired an expert in these tools and are looking at the data requirements and we will be better placed to make a better decision.

Pauline: The question on private sector partnerships has not come up with FFF but is a good suggestion to investigate, because we are aware that it is happening and that there is an interest from the private sector. We will go back on the landscapes' topic after the landscapes' presentation. With regards to Salina's question – reaching out to bigger mechanisms is part of our communications strategy, which involves other factors as well which we will address tomorrow.

Sophie: On the additional workload: I think this is indeed a concern. We are missing the position of a manager another which is a full-time person. Tiina Vähänen said we will have a new manager in a few months. This is also the beauty of the facility; we coordinate with several teams in FAO and in our partners' organizations. We are more than just the people sitting here in FAO, but it is true, we identified some people, hopefully when we get additional funding, we will add another coach and an operational staff member, but this is not yet defined. It is being discussed, this is something necessary, the programme has grown a lot, thanks to BMZ funding. The beauty of FFF is in our linkages and thinking out of the box – it keeps us innovative.

Sustainable wood fuel value chains in Africa

Sophie presented the work of FFF around sustainable wood fuel in Africa.

1st set of questions and comments

Tiina: I applaud you for taking up this initiative. Fuel wood and charcoal is very prominent in Africa. We have been dealing with it a lot in our work in FFD. I feel that in general, and especially in the EU, due to the zero-deforestation regulation and all these issues, approaching this dynamic on how to use and burn wood-based products is very contradictory. Have you had this debate before? Have you been questioned by governments? Has FFF been using any other FAO forum to discuss this? I see similarities with the global drug issue, where if you make something illegal, you must consequently deal with issues brought by illegality.

Salina: With regards to the question on landscapes: When I hear the themes it starts making sense to me to identify these hotspots. How do the themes relate to the selection of priority landscapes? (Answered in the next session)

1st set of answers

Sophie: With regards to Tiina's question: We work with forestry departments, farmers' organizations, and several actors. We have had discussions. When we speak to forestry departments in the countries, they are very thankful for this initiative. For example, before we started working with Zambia they had a huge issue, farmers used to cut trees and make charcoal whenever they needed money, so we intervened and helped organize this sector and tackle this issue. Our initiative has helped the forestry departments very much; they are

extremely collaborative. In Zambia they have seen a spike in increased income from charcoal permits. Before, they had no income from the production of legal charcoal. Now, through the work of recognizing charcoal producers in organizations- this goes together with a lot of outreach and training and awareness raising - charcoal producers are understanding what is at stake and are engaged with legal requirements of the governments, i.e., permits. Once you have an organization you can come together and build advocacy - what do you need from the government, what are the bottlenecks? This is the kind of dialogue that we have started around the charcoal hotspots in Zambia. We identified them, brought them together through local communications, local radios. In the beginning charcoal producers did not want to be visible - now they are, they are proud. Now we have two district associations, and they are proud partners and are involved in the government district decentralized platforms. They receive trainings, we put them in contact with different institutions. We are building the participatory guarantee system for sustainable charcoal with partners, we are promoting this dialogue. FFF's entry point is the producers and then organizing them.

Climate resilient landscapes: What are the FFF current and future?

Noora presented FFF's work on climate resilient landscapes.

Duncan initiated a discussion (through Mentimeter) with the SC members on: what are the crucial factors that FFF should consider when choosing which landscapes to focus on? What types of action should we prioritize to achieve climate resilient landscapes and improved livelihoods in 4 years?

Questions & Comments

Results of the Mentimeter:

- Many different answers. Organization, sustainability, resilience, organizations, regional examples, livelihoods, number of FFPOs present, poverty alleviation, tree cover, scale-up potential, climate change impact, vulnerability.
- This reflects the reality of FFF now – there are many factors to take into consideration. This Mentimeter has introduced this question – the difficulty of choosing the landscape due to the wide range of factors.
- FFF seeks advice from the SC as it develops Outcome 3.

1st question

Duncan opened the floor to answer the question: What are the most important factors that FFF should take into account when choosing which landscapes to focus on? Most livelihood benefits? Most environmental benefits? FFPO operational areas? Landscapes prioritised by other programmes? What environmental benefits count (e.g., expansion in forest cover, diversification, numbers of saleable species etc)?

SC comments / answers

Victor: I could see that many SC members listed the “presence/support of local organizations” as a priority factor, they did not show up as one of the most frequently listed terms under the Mentimeter infographic because of slight changes in the wording. . I

believe that, as mentioned before, for example in Sophie's presentation, that the long-term feasibility and potential for scaling-up are related to the presence of organizations on the field. That is linked with policies at national, sub-national level and other factors.

Salina: For me, I naturally thought of climate vulnerability as a priority factor - but hearing others' reflections, I definitely think there should be a minimum requirement, for example having certain institutions and a basic structure to support the initiatives as a foundation.

Tiina: I feel that the criteria could be flexible and consider the country context/dimension as well. For example, in Latin American, farmers' organizations often have territorial or indigenous foundations which lead to a different dynamic, if compared to organizations in other regions. In these organizations, a great focus is placed on managing forest resources and culture, tradition etc. On the other hand, in Tanzania, for example, the landscape level approach can be based on pastoral communities dealing with issues like land tenure and using charcoal as a tool to escape crises situations, which leads to a different type of dynamic (compared to Latin America). All the factors mentioned are important as to be included in the criteria, but we must investigate the context of each country to determine the relevant ones for each region. If there are aspects around tenure issues, the Land Tenure Facility might be an appropriate partner to move this discussion further with, for instance. It is complex to give a fixed set of criteria applicable to all contexts.

- **Duncan:** I agree. Indeed, if you look at the workplans, you will notice that each country attempted to provide a set of criteria based on local contexts for when we had to make certain decisions before this discussion.

Myrna: Different ecosystems and country situations will need to have a different set of criteria, based on those differences, but a landscape approach requires at least a set of organizations that are willing to coordinate and work together, more than a single strong organization. The possibility of building alliances between organizations is essential. The possibility of building alliance within a landscape. I look at the territorial and landscape approach as producers that can have their traditional productive cycles in their territory. I am thinking of Nomadic communities. Mobility must be the main criteria for them. It is much broader for example than a community that is not Nomadic. The links that they have within their productive system should be taken into consideration. The risks that they face with climate change should be another criterion. I do not know if vulnerability is the term, but the risk that they face with climate change should be considered - how am I supporting that network of organizations to mitigate the risk they face with climate change?

Tiina: How much does the government's support for an enabling environment for FFF activities influence the criteria revolving around the landscape approach?

- **Duncan:** In one sense if we focus on vulnerable situations, part of these weaknesses may be a lack of policy support. FFF is set up to strengthen organizations to address deficits in power to remove vulnerabilities, so that

would indicate we should focus on less enabling situations, but the reverse is similarly true and arguable – we could make faster progress in more enabling areas where there is less vulnerability and more resources.

Pacita: I agree and indeed as we hear more people’s reflections, we get more “confused”. You are right that sometimes you get to help where you get more “bang for the buck” because the government is more cooperative, enabling. But then again, the opposite - you want to help those that have no choice. How do we divide resources between very vulnerable communities and others more equipped? We want results. We do not want to carry a big rock up the mountain in all the cases. We must have balance and good wins and balance where people are very vulnerable, and it is a challenge.

- **Duncan:** I think that is helpful - we need to find a balance to also concentrate on getting good results – show how we progress well when you have a good environment, but also help those most at need. We have been wondering if putting all of our financial resources in a smaller basket will increase impact. Are there absorption constraints where we will we get more results by spreading resources out thinly?

Tiina: The MTE recommended focusing on landscapes, and it make sense - are there any cases where partners were left due to this? Has there been changes in FFPOs, have they reacted to/challenged this refocus of activities?

- **Sophie:** We have had a preliminary discussion with facilitators, and we said that we want to concentrate our efforts and we studied this very carefully, and this is still being discussed and we have now a bit of a synthesis where in fact that discussion is documented – where the concentration will happen. We have not excluded anyone yet, but we have a discussion on this on the workplan. We have plans for 2022 to have this discussion with national advisory committees. We have selected priority landscapes where possible, but the discussion is still ongoing.

2nd question

Duncan: What types of actions should we prioritize given our timeline of four years? Should we push for sustainable business to incentivize landscape restoration’ should we focus on linking with climate programs? Should we think about policies?

SC comments / answers

Victor: It’s difficult to think in general terms rather than in specific contexts but what I would say is that it is important to rely on what people, on an individual basis, companies, and associative bases, are doing currently in that landscape and try to look for transformations that can be assumed by those stakeholders at the local level. The connections between partners are important but I would avoid trying to do a massive fabrication of solutions coming from ideas from the global north and international

organizations that will not be assumed as their own strategy for local stakeholders. This is key to pursuing long-term sustainability.

Esther: FFF should prioritize actions that can be done on the ground and create tangible benefits to farmers in forested landscapes. We need to reach funding, and that funding can come from GEF and GCF, so we must advocate there to gain support for actions on the ground. We must find an interrelated set of actions, strategies, and interventions that will work to allow farmers to feel that their work in climate resilience is having a true impact and benefitting them and their environment.

Tiina: The FFPOs should do the prioritization. With regards to the larger funds, I would like to see with FFF that there is this process where FFPOs have a stronger voice on the implementation of projects - not only implementing but directing the actions. This could be something that would start changing the climate architecture that has been floating at the higher level and not reaching the ground. On the carbon sequestration and credits, what we have seen so far is that they are very complex and costly, and there is a tendency to raise expectations to a high level and have disappointments when farmers see how laborious it is and how little they have to say in this issue. What should be discussed in the benefit-sharing part is that in the western world you see results-based payments, whereas at the local level it might go against the social cohesion and feeling of justice. At the local level, producers and producer organizations might see poverty-based payments or vulnerability-based payments as more relevant/useful.

- **Duncan:** We are dealing with a complicated set of issues. As we've noted, getting an integrated balance between these elements, and making sure that the FFPOs are in the driving seats and using FFF to get FFPOs into the discussions of how these big climate funds are built and where the finance flows would be useful.

Anna: There are aspects where donor support groups and donors in general can support to facilitate linkages between bigger programmes which benefit from having a participatory approach and being formed by producer organizations, IP organizations, etc. which help decide these programmes, together with government actors. With regards to SIDA, we do have collaborations with these different programmes, and we could facilitate more dialogue between these different actors.

General SC discussion

[1st set of questions and comments: From the management team to the SC members](#)

Pauline: Do you (SC members) have any experience on piloting carbon sequestration monitoring tools? (Floor is open to other comments as well).

1st set of answers

Esther: Thoughts on charcoal theme: I was surprised by Sophie's presentation. I had this impression that charcoal has always been bad. I did not know there was sustainable charcoal. In our community when we see our neighbours producing charcoal, I frown at them. But they do not have a job, so what else can they do? Question on exporting charcoal: I think it is not very sustainable, a short milage for selling charcoal would be better in terms of sustainability. There have been experiments with coconut charcoal briskets, and in the Philippines, we have lots of coconuts and the shells go wasted, so maybe this can be experimented, it would benefit coconut farmers in the Philippines and in Sri Lanka. I am excited about FFF collaborating with GEF and GCF. These are funds that we do not even feel their benefits to farmers in forested landscapes and in fact in some cases the IP communities take the projects that are being funded by these funds, especially by REDD+. If we could strengthen the capacities of FFPOs in shaping, directing, where these big funds should go, it would be a strategic way to help our constituencies.

Sophie: I understand that charcoal might be controversial, and that exporting might be complicated, CIFOR is conducting a study on this, and we know it is done illegally at times. CIFOR published a book where we have one chapter on producer organizations and one chapter on transborder trade, and now these briefs are used for policy advocacy. We must explore bioenergy alternatives and we are working on this in Zambia. One of our apex farmers is the Cotton Association of Zambia. The cotton stalks are burned after harvest (mandatorily, by law, to avoid pests) and now the idea is to use these cotton stalks to transform them into briquettes or pellets and we have been using this to build a business case around it, which is very innovative. So yes, we are thinking about alternatives. For example, in Ghana we are looking at briquettes based on grass, so we do have work ongoing on bio-energy. But we cannot ignore charcoal (based on the big figures in demand) at least for the next ten years, we have to keep thinking about it and thinking about how to make it more sustainably.

2nd set of questions and comments: From the management team to the SC members

Pauline: Does anybody from the SC or from the donors' group have experience with GEF/GCF funds and channelling their funds to the ground?

2nd set of answers

Sophie: Maybe we can speak from our own FFF experience. What we have done in Zambia, for example - there is this issue where FAO is the executing agency and so we cannot implement. Duncan was one of the main consultants that came in the formulation process and put FFPOs as main actors in this concept note, also inserting more about charcoal. I want to say that we are trying to influence these GEF projects, but it is a hard job. Because we put effort into this and once it is finally approved, we have to find someone else to implement it. In Zambia, for instance, the situation is that WWF is the implementing partner, and here we are lucky as at least they know about FFF's work. Our facilitator is now also the FAO GEF focal point for FAO Zambia to supervise this WWF project – so there we can have a bit more impact, but it is not ideal. Currently, we must convince WWF Zambia to

adhere to the script and involve FFPOs and fund them directly. We are a few steps away from what we want to do in the FFF approach. We think that together we can push for a change in this and together we can change the narrative and thinking. Why cannot a GEF program be executed by an apex organization?

Tiina: Together with regional farmers' organizations we have been assessing these green climate funds, and there are so many gatekeepers and many definitions of what are/who are the implementing VS executing organizations. A determining factor is having a person interested in hearing, in challenging or changing the power structures of these climate funds to improve accessibility of local organizations/groups. I think that since there seems to be a tendency of development funding being reduced and climate funding growing, I have the feeling that the gatekeepers have an interest to protect their structures and maintain their position. There is a power balance and those who have been accredited as executing organizations have an upper hand, an advantage. Are the accreditations moving the climate fund into the right direction?

Jhony: I see an evolution of the participation of producer organizations and the FFF as a positive evolution in these big programmes. We have many facilitators here that were facilitators of FFF and at the same time coordinators of successful GEF projects, and these projects were selected out of many in the region and our facilitators were a part of that. The benefits going to our producer organizations were not excellent, but there have been developments. The MJUMITA association, in Tanzania, for example, has received trainings, and because of this strengthening of capacities they will be part of the GCF, and this is something different. Initiatives such as the one in Tanzania in other countries as well. We are moving in the right direction.

Duncan: As you know, FFF has been written into large GEF and GCF projects and one of the challenges of that has been that people are not clear yet what that FFF approach is. Particularly the fact that it pivots around this point that FFPOs and IPs - we see as the agency of change, the key actors, and they should be the key actors in programs like GEF and GCF, and that is not yet possible because of the restrictions on accreditation, due diligence, etc. - one of the things we are doing is to articulate the main principles and modalities that FFF is seeking to install in these programmes (through a brief).

Chris: On Tuesday, we discussed with the FAO GEF team which reflects what we are trying to do in IUCN in relation to strengthening FFF engagements with GEF/GCF. We saw three pillars of action: one was starting to show in relation to communications and a policy brief and tools that will help not just IUCN/FAO but also its partners and help bring the FFF/FFPO concept into GEF/GCF and other organizations. It is a good opportunity to work with two accredited agencies to see in countries where we can prioritize and where FFF can take a leadership role in the development and design of projects. There is always the opportunity of global projects that we can work with as institutions, especially moving towards GEF 8, where you have programmatic areas where FFPOs can be critical.

Anna: (Chat) Not to forget what FFF modality can bring those programmes too in terms of partnerships with aggregated groups in those landscapes.

Esther: We cannot submit proposals to big funding mechanisms because we are not accredited in GCF or GEF but we know that FAO is an accredited organization so they can submit proposals. Once, FAO consulted us to prepare a Philippines government proposal, so we participated in an interview but not in the design of the project and we do not know what happened to the proposal and if it ever got approved or implemented.

Tiina: The Finnish Forest and Farmers union has discussed with Dutch and Danish organizations to work in Kenya, and this discussion has been going on for four years and we still have not submitted anything. This discussion had been supported by FAO. Discussions around climate finance and funding projects are lengthy processes and require lots of time, as well as funding. FAO and FFF based in Rome have a huge advantage. For farmer organizations it might be too much, it is complicated to participate as it is time consuming, and you do not even know if you will get the funding.

[3rd set of questions and comments](#)

Joerg: Will the Ex-ACT Tool will be developed further?

[3rd set of answers](#)

Jhony: All of these carbon tools' pilots have been carried out with the direct participation of the producers, and we hope that it is because they see concrete benefits, and it is not just because someone tells them to participate. We believe that this information will be evidence of their efforts and they can use this to advocate to national and local governments and resource partners. We want them to build their capacities. We want to appreciate the generosity of colleagues who developed the tools. Our colleagues are open to working together with producer organizations and try to adapt these tools to be used by themselves, for advocacy, so that they can go to decision-makers and show their contributions to carbon sequestration. It will be adjusted to their realities. With RecSoil, for example, they will help with carbon emission regarding the soil while increasing productivity, building resilience, landscapes, recognize farmers' contributions - by that we hope that producers will see direct benefits. Regarding the ExAct tool, they will know the emission data of their value chains and will quantify their emissions. Sepal is a more technological tool, we do not believe it could be used by a producer organization, but it is interesting because it captures the contribution of the organization to restoration and carbon sequestration at the landscape level. All these tools will be piloted, and the reports will be shared with you, and we want your feedback.

[Final SC comments](#)

Victor: Regarding the re-focusing of landscapes: My suggestion is that rather than trying to solve this complex discussion now, we should keep SC members engaged at the regional level, for example, to collaborate on a regular basis and participate in these discussions. I remain available to support at the regional level in Latin America.

Cécile: Ecosystem restoration is complex as we have recognized, but I will always advocate and support that we must ensure livelihoods development so that they can contribute and participate to landscape restoration. In some programmes, it seems like we are using them (local populations) to solve other peoples' problems, so we must focus on livelihoods as well as on women's right to land and land tenure. Depending on where you are, women's right to land is not yet guaranteed. I am also available to support and be engaged throughout this process.

Closing remarks

Esther delivered the closing remarks to Day 2 of the Steering Committee: This has been an interesting discussion, as we work with FFPOs, as an individual I learned new concepts and promising strategies and interventions from an expert group of people in the SC. There are big ambitions to influence big funding agencies towards making them more responsive to needs of FFPOs and IP organizations. We know the challenges and obstacles, but we have opportunities, and we have donors, governments, and we have the constituency who have been strengthened enough by projects that FFF has supported, so together we can try to open that window. Hopefully the big agencies can help us reach our goals of doing strategic and long-term interventions i.e., landscape approach and ecosystem approach and working with different actors, governments, NGOs and with the private sector, I hope the SC will be there to help provide further inputs as we move along.

Announcements

Tiina H. closed the meeting with final announcements. These presentations invigorate me, as do the discussions pondering the complexity and diverse tasks of FFF. I know that the team and partners have studied each topic in detail and it gives me confidence that we are in the right direction. What Chris said about the conversation he recently had with big funds is also a good sign, especially regarding involving more diverse organizations. What we see in FFF is that the grassroots engagement is contributing to better livelihoods and to landscape discussion.

Day 2: Key recommendations for action

- **Focusing of landscapes:** Throughout this process, it is important to prioritize the people in the landscapes rather than the landscapes alone. FFF should consult SC members throughout the process, especially at the regional level. The criteria for selecting landscapes should be a balance between long-term feasibility, potential for scaling up, vulnerability, poverty, willingness to cooperate on the side of local governments and organizations, local structure to support the roll-out of activities, and more. The local context should also be taken into consideration, and it is impossible to create a single universal set of criteria – but a minimum requirement can and should be established. Women’s rights to land tenure should also be at the centre of this process.
- **Carbon sequestration monitoring tools:** Considering that these tools can be expensive and complex - therefore expert-driven - FFF must think about how to place FFPOs at the centre stage of this process and ensure they are receiving direct benefits. It must not be a top-down approach, but a participatory process. FFF should also consider exploring private sector partnerships for the funding and execution of such tools.
- **Wood fuel initiatives:** SC applauds charcoal and wood fuel initiative as it is a controversial topic. FFF should always maintain a dialogue with local governments and organizations for the successful roll-out of activities. The FFF should also explore alternatives to wood fuel, such as coconut shells and the ongoing idea of using burnt cotton stalks.

Day 3: Friday, March 18th

Central Theme: What Do We Have Planned for 2022?

Recap – Proposed agenda for the day

Tiina H. covered the meeting agenda and presented a summary of points discussed in the first two days of the SC.

SC Minutes from 2021 were approved by the SC members

General overview on 2022 Workplan & Budget

David presented the logic of the 2022 workplan. A fair amount of continuity for each of the ten core countries, contracts with bigger and smaller organizations, strengthening the capacities of the organizations, policy participation, building community enterprises. At the regional level, many things are similar to earlier workplans: knowledge research, communications efforts to influence narratives, support for regional and global networks. Implementation of the MTE recommendations. One thing that comes out of the evaluation that should be highlighted is the updated Theory of Change for FFF – to be done without a new Project Document.

David presented the 2022 budget compared to the 2021 budget.

Country-level activities workplan

Jhony presented a summary of workplan at the country-level activities clustered by FFF Outcomes (1&2)

Sophie presented a summary of workplan at the country-level activities clustered by FFF Outcomes (3&4)

Regional & global partners work plans

Pauline, presented on regional and global partner workplans – more details to be shared in the coming weeks

Guidance of SC members on Workplans

1st set of questions and comments

Victor: I am interested in continuing to investigate the focusing of landscapes, particularly regarding the processes in Latin America, I believe that it could be useful for SC members to discuss the strategies and implications around that. I insist on the need of watching around

the cost and long-term feasibility of the carbon sequestration management systems. I say systems and not tools because the tools are just a part of the big systems. We need to cooperate with the national systems and NDCs and efforts for forest and agricultural land use for carbon sequestration at the national level.

Myrna: In relation to the effort to ensure that farmers' organizations are diverse - the diversity of organizations must be considered for each activity, whether we are speaking about landscapes on one side and territories on the other. The effort is in how to mainstream the concept of differences between organizations based on their cultural differences, language, cosmovision, etc. The second aspect that I want to highlight is the need to link this process of trying to ensure advocacy of farmer organizations at the global level – what type of alliance are they building? How are they linking to global and regional networks? For example, two of the global IPs networks mentioned before are small compared to the indigenous world. What are the activities linked to the networks to make these activities stronger? Outcome number 3: related to monitoring – the aspect of traditional knowledge, and as part of resilience, is important to begin to monitor - many of communities depend on the application of traditional knowledge for resilience. Finally, in relation to the concept of vulnerability, this is a concept that has been questioned and challenged by indigenous communities often, because under the concept of vulnerability, usually governments include other themes too (such as gender), so I think this is another aspect to be considered.

1st set of answers

Jhony: Appreciates the guidance. We agree that it is important to link the carbon sequestration tools to national systems, we have been communicating with country governments. Governments are invited to this exercise. Answer to Myrna's points: Be sure that we will take into consideration your points, especially in relation to appreciating the diversity of organizations. We will be innovating and at the same time appreciating traditional knowledge always as part of resilience efforts. I appreciate Victor's willingness to participate in the process of focusing landscapes on Latin America.

Sophie: I appreciate the guidance and emphasis on traditional knowledge, and we must make this more explicit. The observation on the meaning of vulnerability – I will pay more attention to this as well. We might come back to you for additional guidance on that issue.

Pauline: It is indeed good guidance, and we navigate these issues daily with a limited budget – it is complex, and we have taken the point.

Tiina: In 2021, the “super year” for international policy, an important financial pledge for local communities and indigenous peoples was made by donors and strategic alliances were founded. I have tried to establish a map to assess which alliances will take off and which have a relevant agenda.

2nd set of questions and comments

Esther: I see the, besides everyone being in different countries, I can see similarities between the work done in countries and regions in the different themes. Three things 1) It would be good to have regional exchanges about these tools and learning processes. During

the international FFPOs conferences, perhaps - hopefully the conferences will provide the opportunity to share lessons learned. 2) Seeing that there are more partners on the ground, we could help flex the muscles of these partners. i.e., through advocacy at COP27. For example, on Earth Day we could ask farmers/partners to plant a tree or something like that – anything that speaks about agro-sustainable forest management. 3) I see interest in engaging in the upcoming COP and I see the work of engaging with countries that are going to be present at COP27. If we could work at the national level so that we could help farmers' organizations to influence what national governments will bring to the table. If we have strength and voice at the national level, we have courage to speak at the global level.

Salina: There's a lot of value to allocate more budget to the regional activities. How are activities decided? As you read the country plans, they tie to the outcomes, but the regional ones are not as explicitly attached to the specific goals. I am happy to see the focus on youth engagement, and a lot more can be done, by raising their voices and stories.

2nd set of answers

Duncan: With regards to events: We have been looking forward to face-to-face exchanges, the Viet Nam conference will be a good opportunity for that. We have been looking closely at the UN Decade on Family Farming and we are looking at linking the first day of the Viet Nam conference to the last day of the Global Summit on Family Farming. We will be preceding the COP with these events, lifting the voices of farmers, and highlighting the many ways in which farmers develop climate action and in terms of single topics like carbon, thinking more technical, full spectrum climate action where farmers are doing adaptation, resilience, mitigation, etc., in ways that are socially and environmentally integrated. At the Viet Nam conference we will be able to go to the field and showcase some examples of multifunctional agroforestry systems producing multiple economic products, overseen by farmers organizations.

Pauline: I am drafting a roadmap and as soon as it is more advanced on the strategy and pathway, I will share more details on the plan leading to COP27 because we want to build a structured way to strengthen messages and increase visibility. It would be great to have a joint plan with regional partners as well as the regional teams. Regarding Salina's question on the regional activities – we also follow the Outcomes. We do call for proposals where proposals must fit under one of the Outcomes at least.

Tiina: I would like to emphasize that it is important to think about how to present ourselves at COP27. Farmer constituencies have already been thinking on how to present themselves, as well as WFO, members of AgriCord, African farmers' organizations, etc. It is good to see Esther sitting in the driving seat for Asia too.

Pauline: For COP27 I will come back to you with ideas, hopefully we can organize a “pre-COP” for farmers for policy influencing. I like Esther's idea on exchanges about tools and learning, perhaps not in 2022, but we will investigate it.

Knowledge management / Major events joining forces on outreach/advocacy

Kata, Marguerite, and Mario Acunzo presented the knowledge management/communications plan for 2022. Pauline presented the list of major events for 2022.

1st set of comments and questions

Mario: Referring to COP27 and collaboration with UN Decade of Family Farming: It is key to bring messages of the UN Decade to COP27 and make it clear that family farmers are at the centre of sustainable development. It is essential to put this at the centre of the agenda. From the Family Farming unit at FAO, we trust in the efforts of FFF to bring forward this dimension and we are willing to support and engage with these efforts.

Myrna: It is good to focus on global advocacy activities. One of the problems is how to support joint participation of what peasant and indigenous organizations - how to bring them together and prepare them together for regional and global activities. If we plan separately, we attend the events separately. So, it is one of the things to think about – how to do this, without creating tensions. In Latin America we have received requests from afro-descendant communities to work with IP communities, so this is possible if we dedicate ourselves to it. We need to push to bring them together. At the same time, how do we link what is gained at the global level to what is happening at the ground? If farmers' organizations do not see their impact on the ground at the international level, they will not value that. They have so many problems at the ground level that they might see the international events as a waste of time. Communications might play a key role there - show how the international level is impacting the ground level. I appreciate what Mario has said, but I still think we have a horizontal challenge – we talk among ourselves and big media talks among themselves. We do not have stories coming from the farmer's organizations to the big media. This must be improved. Sometimes I am afraid that the landscape approach brings us back to the conservation approach – where the landscape is more important than the people who live in the landscape. How do we humanize the landscape approach? About what was said in relation to social protection: when we look at innovative things, we must think about local organizations, what are they already doing, their own mechanisms of social protection and how can these influence the social protection patterns that come from the state and are usually like charity, just giving, rather than empowering. How do you combine the vision of social protection with protection of waters, forests, animals?

Tiina: I have been thinking about how to build this process, like the roadmap that Pauline is doing – how we can get visibility in events. When we were organizing events for the COP26 we used different strategies i.e the Nordic pavilion, where we were also merged with PAFO; we also collaborated with Canadian, German, and UK farmers' organizations for joint events, and it was interesting because we worked with different organizations and at the end, we had many actors involved. Francophone communities and countries will have a pavilion too, so there are different ways to increase visibility. Duncan said that we should

think about themes – i.e family farming, ecosystem restoration, balance between landscape and people living in landscapes, and how to present them. It will be an interesting process and we have to think about how we will approach this, how to be there, who can take the lead on this, how to divide themes into a joint movement.

Esther: I appreciate this SC because it is composed of grassroots organizations, national organizations, regional, global... many different levels. We have a powerful group. We have to strengthen the bottoms-up and participatory processes in advocacy and implementation of activities, so we can have an impact, for example in financing. I look forward to working closely with you and experimenting with our initiatives, for example with value chains, and build off each other's work and knowledge/expertise/skills.

Tiina: Cécile emphasized the perspective of farmers around livelihoods. While the EU is moving forward with zero-deforestation value chain regulations and there is a heavy emphasis on forest protection, we also need to see the needs of farmers and IPs to generate income and sustain their livelihoods. Therefore, it is important to think about the business perspective within resilient landscapes, as IIED has been doing. How can we improve market access to products which are beneficial to resilience. What is the best way to push this forward? Is it with regulation? It seems like when it is the EU and European Commission establishing regulations, it might not be adequate – in Europe we might not be the best persons to understand what kind of regulation is needed in the countries. We need to listen much more to FFPOs and IPLCs. FFPOs should be among the actors monitoring regulations like these. If we create bureaucracies and frameworks that we cannot implement or create barriers to the people who should be benefitted and that earn their living from the forests, this is not practical or feasible.

Salina: On Myrna's point regarding the disconnect between organizations planning for the COP: I know that for GLF we have taken a regional approach to build connections. I will be reaching out to you (FFF) to strengthen these connections and plan for these months building up to the Conference.

Pauline: Thank you Myrna for flagging that we want to join farmers' and IPs voices. I hope we can do this this year, there are many challenges, depending on the region there are tensions between IPs and farmers. We tried this last year, and some constituencies were not yet ready. I am happy to speak to you about this further. In Asia it seems to not be a problem, but it really depends on the region, and we need to work on this.

General SC Discussion

- **Formal approval of 2022 workplan and budget**
- **Proposal to hold steering Committee on 3 October in Rome, in person during the Committee on Forestry (COFO) and World Forestry Week in Rome.**

Closing remarks by FFF Manager OiC

Ewald closed the meeting: many good ideas and exchanges, I feel that FFF SC is confident in the direction of FFF's work. We are on the right track; we will continue implementing the MTE recommendations. We took this opportunity to discuss some important themes such as how to deal with climate-related aspects, big funding mechanisms, charcoal, etc. What I see is a good sense on the direction to follow, which is around people – while environmental aspects are well integrated. This is about intact landscapes, production, and livelihoods. It was interesting to hear from the new SC members bringing excellent ideas which resonate with FFF and beyond. FFF is helping to shape the Forestry Division, where we think about how to support forest producers and how to effectively bring environmental and social dimensions together at the local level. What I have done these last days is look at this not only in the context of the FFF but also in the broader context of what we have been doing. In the Forestry Division we are focusing increasingly more on what is considered the core of FFF's work: listening to the voices of those on the ground. Finding our comparative strengths and moving forward with a shared vision is powerful. In addition to COFO, the State of the World's Forests (SOFO) will also be launched on 3 October, which will be the date of the next SC of the FFF. We dedicated a whole chapter on how to get forest-based pathways and finance better aligned with local producers' needs and local realities, so when you come on the 3rd of October to COFO we will have a discussion around this. You are knowledge-holders that we need there to have discussions and guide recommendations too. While FFF might be its own group, we look forward to scaling-up its work and build on what FFF is doing. It would be great to organize something in that same week to discuss this. We have a good platform for our meeting in a couple of months, and you are well prepared for it. Time is good for us at FAO to bring this forward: from protection to restoration to enhance sustainable use in ways that make sense.

Closing remarks by FFF SC Chair

Tiina H. closed the meeting: I feel inspired by this meeting. FFF gives me new perspectives, questions, and answers always. This kind of diverse group is very enriching. I thank the SC members, especially the new members. I hope we can organize in-person meetings. I want to thank David for pushing the FFF to another level and we hope to count on you as part of the group in the future. A big applaud to the management team, to the country facilitators, who are the bridge to the countries, and a big thank you to donors. I hope we can have an important role in COP27 and engage all the energy, diversity, and power that we have. We must keep FFPOs in the loop and constantly engaged in a central position. When entering big finance mechanisms, let us keep these people who are central to restoring forests and building resilience in the centre of the picture, recognizing their contributions, and providing them with necessary tools and support. They are the people we work for and spend our time in the office for.

Day 3: Key recommendations for action

- **Workplans at country level**
 - It is important to involve SC members in the discussions and decision-making processes related to the selection of priority landscapes.
 - FFF must be careful in relation to the cost and long-term feasibility of carbon sequestration monitoring tools. It is essential to cooperate with the national systems and NDCs and efforts for forest and agricultural land use for carbon sequestration at the national level.
 - It would be useful to have regional exchanges about the carbon sequestration monitoring tools and learning processes, perhaps during the international FFPOs conferences.
 - In relation to the diversity of farmers' organizations, it is important to ensure that their diversity is considered for each activity, whether it is in relation to landscapes or territories.
 - It is important to ensure that farmers' voices are present at the global level.
 - Traditional knowledge is essential for resilience and must also be monitored and taken into consideration. FFF must also be aware of the definition of vulnerability established in different contexts – in some governments, gender issues are included under the definition of vulnerability, for example.
- **Global visibility and influence:**
 - With important global events happening this year, FFF must build momentum, increase visibility, and influence dialogues in the coming months so that FFPOs and IPLCs can have a unified voice at COP and other events, and common key messages can be disseminated.
 - Key message to be echoed before and during COP27: Family farmers are at the centre of sustainable development.
 - It is important to unify IPs and farmers before COP27 for a cohesive, unified presence at the conference – might be a challenge due to pre-existing tensions. Local producers must see the value and impact of international events such as COP, or else they will not care to join such events.
 - In May and June, the call for COP27 side events will begin – FFF should start thinking about coalitions.
- **Focusing landscapes/resilient landscapes:** The focus on landscapes must not become a focus on conservation without taking into consideration the people that live in these landscapes: social and environmental priorities must be intertwined. Sustaining livelihoods while preserving landscapes is key.

Annex 1: List of Participants

Steering Committee members

- Cécile Ndjebet, President, African Women's Network for Community Management of Forests (REFACOF)
- Diego Pacheco, Head of Bolivian delegation to UNFCCC and CBD, Plurinational State of Bolivia Vice Presidency
- Elizabeth Nsimadala, President, Pan Africa Farmers Organization (PAFO)
- Esther Penunia, Secretary General, Asian Farmers' Association for Sustainable Rural Development
- Myrna Cunningham, president, Association for Women's Rights in Development (AWID)
- Pacita Juan, Regional Head, International Women's Coffee Alliance
- Salina Abraham, Regional Manager, Global Landscapes Forum Africa Hub
- Victor Lopez, Programme Officer, Ford Foundation
- Tiina Vähänen, Deputy Director, Forestry Division FAO
- Tiina Huvio, Programme Director, FFD.

FFF Management Team

From FAO

- David Kaimowitz, Consultant, FFF FAO
- Ewald Rametsteiner, Deputy Director, Forestry Division, FAO and Officer in Charge FFF Manager, FFF
- Francesca Guarascio, Information Management Consultant, Operational Coordination, FFF FAO
- Jhony Zapata, Forestry officer, Country Coaching, FFF FAO
- Julia Guimarães, Consultant, Communications Assistance, FFF FAO
- Marguerite France-Lanord, Forestry Officer, Communications Coordination, FFF FAO
- Pragyan Pokhrel, Consultant, FFF Implementation and GEF7 DSL-IP Liaison, FFF FAO
- Sophie Grouwels, Forestry Officer, Country Coaching, FFF FAO
- Tatiana Lebedeva, Office Assistant, FFF FAO
- Zoraya Gonzalez, Programme Assistant, FFF FAO

From IIED

- Duncan MacQueen, Team Leader, Forest and Prosperity Team, IIED
- Kata Wagner, Researcher, Forests and Prosperity, Natural Resources Group, IIED

From IUCN

- Chris Buss, Director Centre for Economy and Finance, IUCN
- Pauline Buffle, Programme Officer, Enterprise and Investment, IUCN
- Zoe Williamson, Junior Professional, IUCN

From AgriCord

- Gabriela Quiroga, Management team Member, AgriCord
- Noora Simola, Climate and Forestry Expert, AgriCord

FFF Country Facilitators

- Aboudoumisamilou Issifou, Country Facilitator, FFF Togo
- Elvis Kuudar, Country facilitator, FFF Ghana
- Geoffrey Bakanga, National Consultant-Natural Resource Management, FAO Tanzania
- Helena Lehtonen, Country Facilitator, FFF Zambia
- Herizo Rakotaniaina, Country Facilitator, FFF Madagascar
- Nickson Mahanga, Country Facilitator, FFF Tanzania
- Pham Thang, Country Facilitator, FFF Viet Nam
- Phillip Kisoya, Country Facilitator, FFF Kenya
- Shah Racchya, Country Facilitator, FFF Nepal

FAO HQ Staff

- Geraldo Segura-Warnholtz, Team Leader, Social Forestry Team, Forestry Division, FAO
- José Diaz Diaz, Forestry Officer, Forestry Division, FAO
- Mario Acunzo, Team Leader, Communication for Development (ComDev) Team, Partnerships and UN Collaboration Division, FAO
- Tony Owusu, Office Assistant, FAO

Resource Partners

- Anna Bolin, Programme Manager, SIDA
- Aysha Ghadiali, Social science Advisor, USDA Forest Service
- Charlie Seten, US Department of Agriculture
- Emma Tickner, Programme Officer, SIDA
- Joerg Lohmann, Director, GIZ, BMZ

Annex 2: SC meeting Agenda

Day 1: Wednesday, March 16th Central Theme: What happened in 2021? Moderator of the day: Tiina Huvio		
https://fao.zoom.us/j/4907245285 Meeting ID: 490 724 5285 Passcode: 12345678		
Time	Topic	Presenter
1:30 – 2:00	Introduction Self-introductions (10 minutes) Formal welcome (3 minutes) Introductory comments by FFF manager OIC (3 minutes) Reflection on the moment (5 minutes) Meeting objectives, agenda, and procedures (10 minutes) Decisions by the previous SC meeting	Tiina Vähänen, Deputy Director, Forestry Division, NFO Ewald Rametsteiner, OIC FFF, FAO Chris Buss, Director Forest Programme, IUCN Tiina Huvio, Programme Director, FFD
2:00 – 2:30	New Steering Committee members reflection on FFF (5 minutes each) General SC Discussion (15 minutes)	Esther Penunia, Secretary General, AFA Victor Lopez, Program Officer Ford Foundation Diego Pacheco, Head of Bolivian delegation to UNFCCC and CBD
2:30 – 3:00	2021 Results on programme & budget	David Kaimowitz, consultant FFF, FAO
3:00 – 3:20	From the Food Systems Summit through COP26 in Glasgow	Pauline Buffle, Forest Programme officer, IUCN
3:20 – 3:55	General SC discussion	
3:55 – 4:00	Closing remarks Announcements	Elizabeth Nsimadala, President PAFO Tiina Huvio, Programme Director, FFD

<p style="text-align: center;">Day 2: Thursday, March 17th Central Theme: Deep Dives on Topics of Strategic Importance Moderator of the day: Pauline Buffle</p>		
<p style="text-align: center;">https://fao.zoom.us/j/4907245285</p> <p style="text-align: center;">Meeting ID: 490 724 5285 Passcode: 12345678</p>		
Time	Topic	Presenter
1:30 – 1:45	Recap – Proposed agenda for the day	Pauline Buffle Forest Programme officer, IUCN
1:45 – 2:10	Implementing Mid-Term Evaluation recommendations and the Steering Committee comments on them (15 minutes) Discussion (10 minutes)	Jhony Zapata, Forestry officer, FFF, FAO
2:10 – 2:30	Sustainable wood fuel value chains in Africa (10 minutes) Discussion (10 minutes)	Sophie Grouwels, Forestry officer, FFF, FAO
2:30 – 3:15	Climate resilient landscapes What are the FFF current and future? (10 minutes) Discussion (35 minutes)	Noora Simola, Climate Forestry expert, AgriCord Duncan Macqueen, Principal researcher Forest & Prosperity, IIED Pauline Buffle, Forest Programme officer, IUCN
3:15 – 3:55	General SC discussion	
3:55 – 4:00	Closing remarks Announcements	Myrna Cunningham, Indigenous rights activist Tiina Huvio Programme Director, FFD

Day 3: Friday, March 18th Central Theme: What Do We Have Planned for 2022? Moderator of the day: Tiina Huvio https://fao.zoom.us/j/4907245285 Meeting ID: 490 724 5285 Passcode: 12345678		
Time	Topic	Presenter
1:30 – 1:45	Recap – Proposed agenda for the day	Tiina Huvio, Programme Director, FFD
1:45 – 2:00	General overview on 2022 Workplan & Budget	David Kaimowitz, consultant FFF, FAO
2:00 – 2:20	Country-level activities Workplan	Sophie Grouwels, Forestry officer, FFF, FAO Jhony Zapata, Forestry officer, FFF, FAO
2:20 – 2:30	Regional & global partners work plans (10 minutes)	Pauline Buffle, Forest Programme officer, IUCN
2:30 – 3:00	Guidance of SC members on Workplans	
3:00 – 3:30	Knowledge management (10 minutes) Major events joining forces on outreach/advocacy (5 minutes) Discussion (15 minutes)	Kata Wagner, Researcher Forests and Prosperity, Natural Resources Group, IIED Marguerite FranceLanord, Communication officer, FFF, FAO
3:30 – 3:50	General SC Discussion Formal approval of workplan and budget and information on Next SC meeting	
3:50 – 3:55	Closing remarks by FFF OIC	Ewald Rametsteiner, OIC FFF, FAO
3:55 – 4:00	Closing remarks by FFF SC President	Tiina Huvio, Programme Director, FFD