

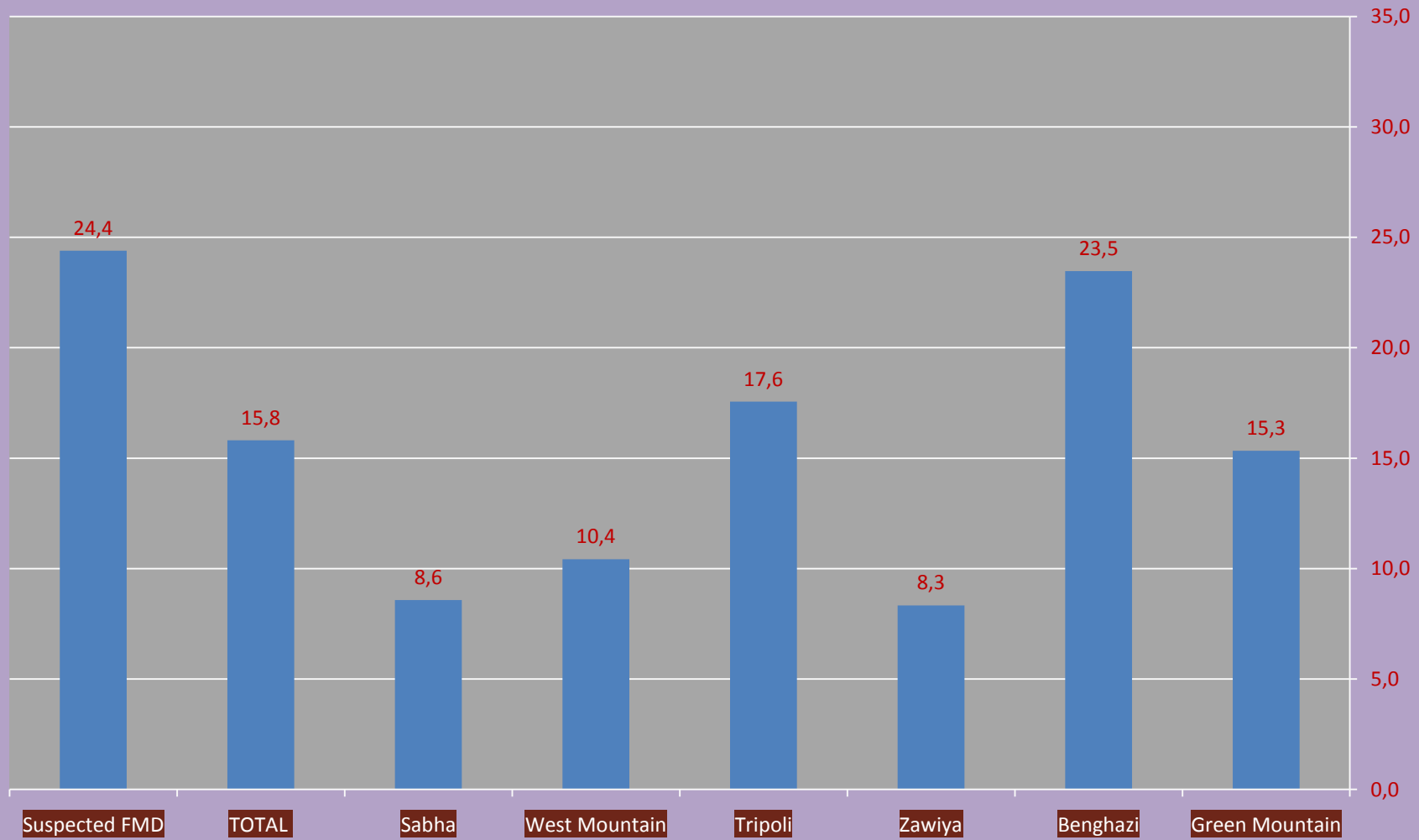
Some Result of FMD, PPR and BTV in Libya

Presented by

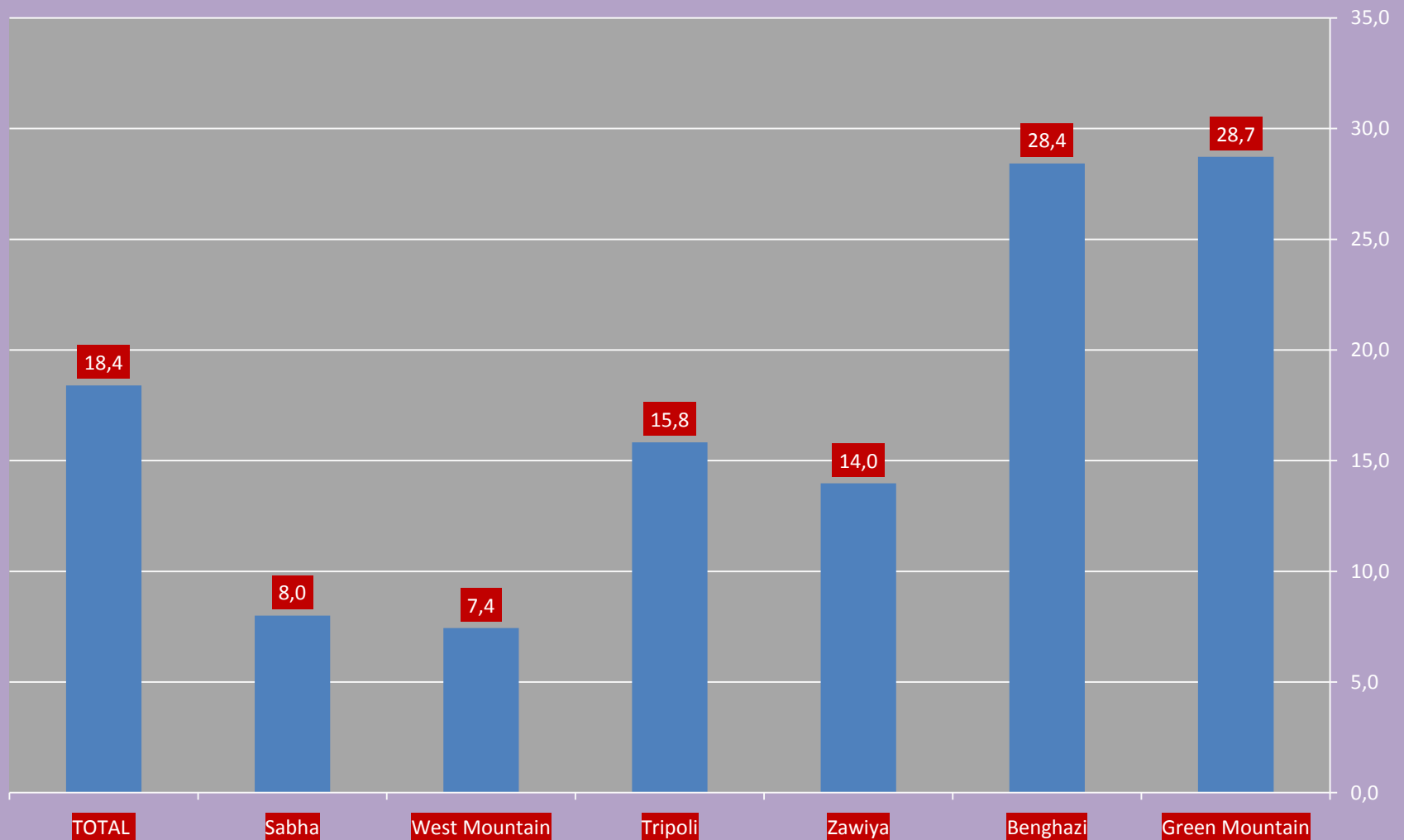
Ali EDRAR

Tunis, 29-30 November 2013

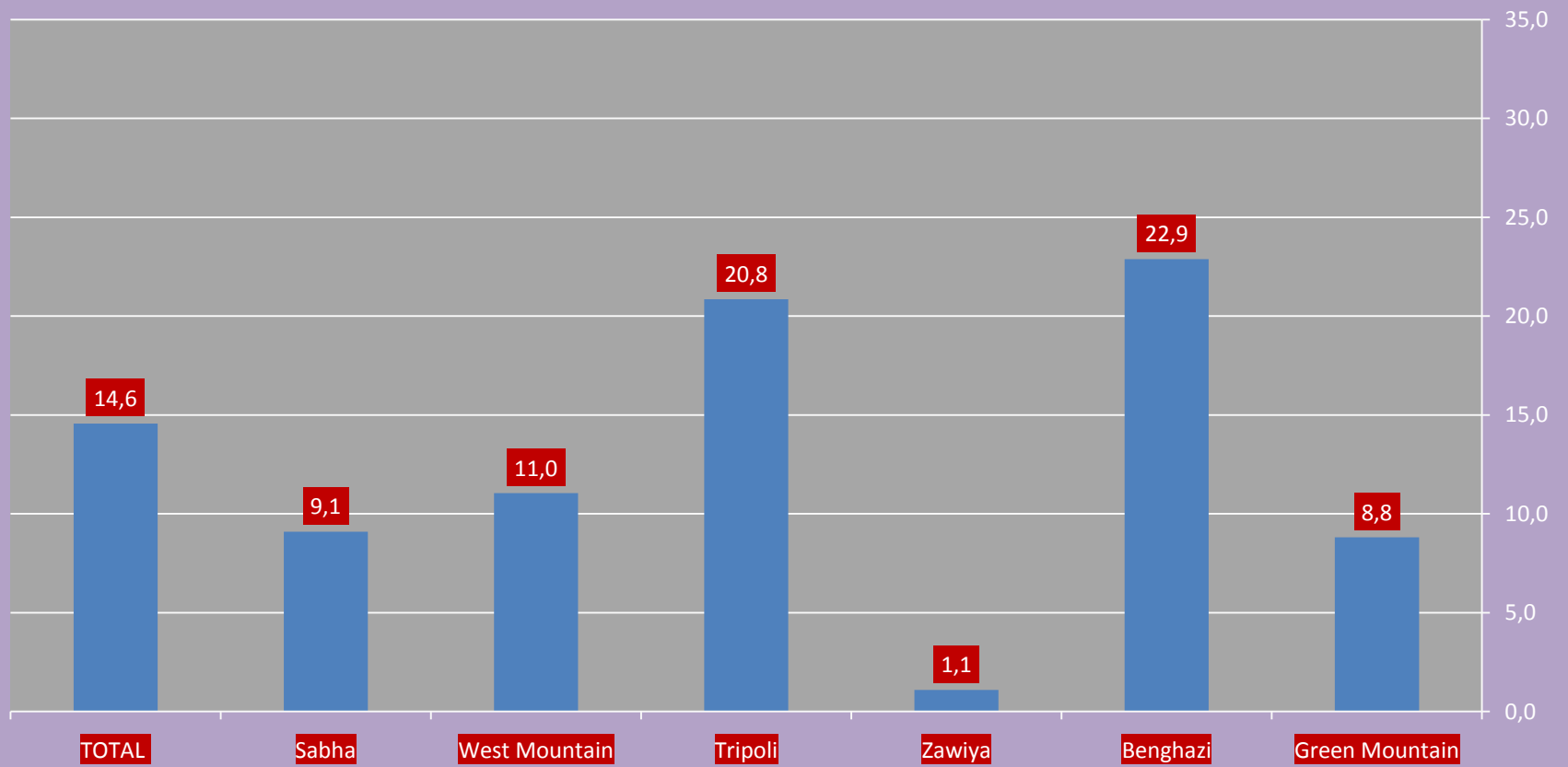
Prevalence of FMD



Prevalence of FMD (Cattle)



Prevalence of FMD (Sheep)



FMD UPDATE IN LIBYA

- Last results from surveillance program
 - New outbreak** in zletin region in September 2013
 - serotype O - diagnosed in Tripoli Lab
 - confirmed and Isolation in Brescia Lab
 - sent to Pirbright for Topotyping and vaccin matching
- Result serotype O topotype ME-S **Strain Ind2001**
 - [Detection and serotyping](#)
 - [Genotyping](#)
 - [Vaccine matching](#)

History of Strain Ind2001

- Restricted in Indian sub continent and Middle East

Iran 2009

UAE 2008-2009

Oman 2001

Bahrain 2001

Kuwait 1997

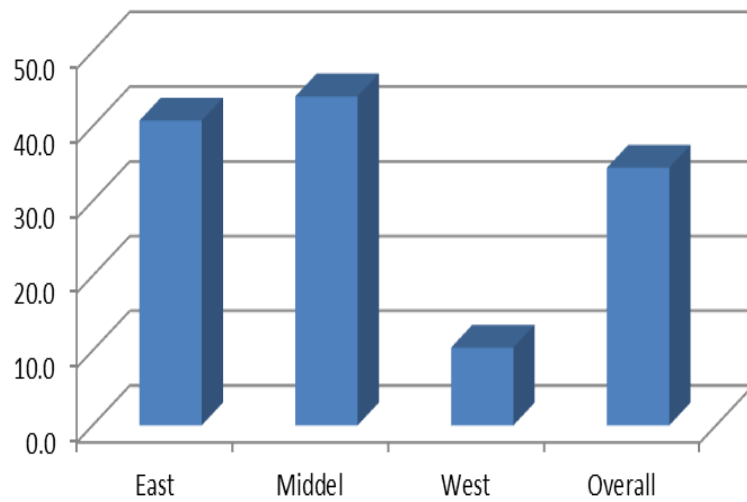
More recently in Saudi Arabia 2013

PPR and BTV

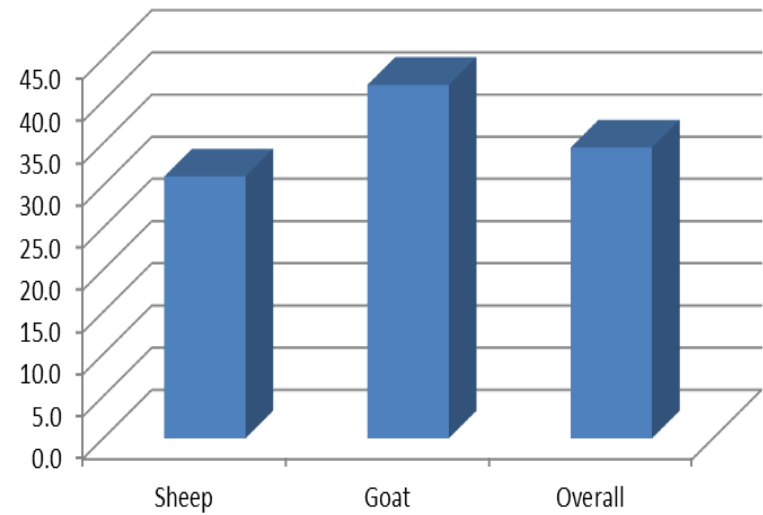


PPR

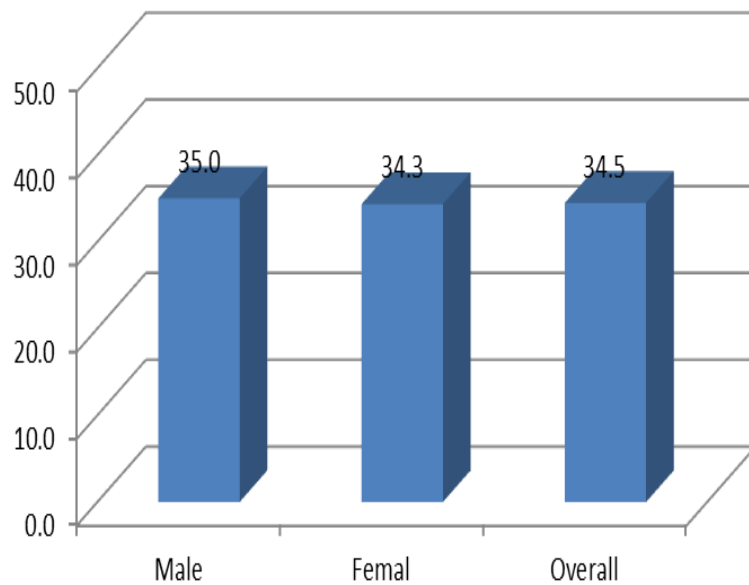
Sero-Prevalance



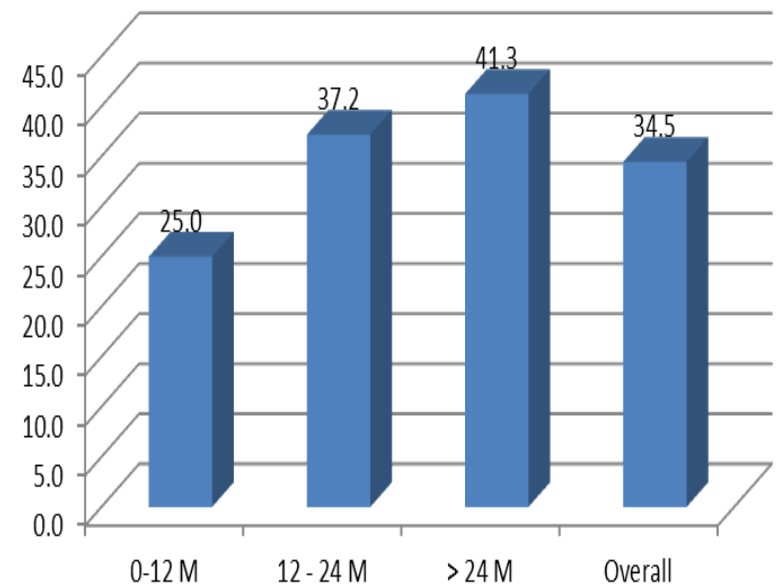
Sero-Prevalance



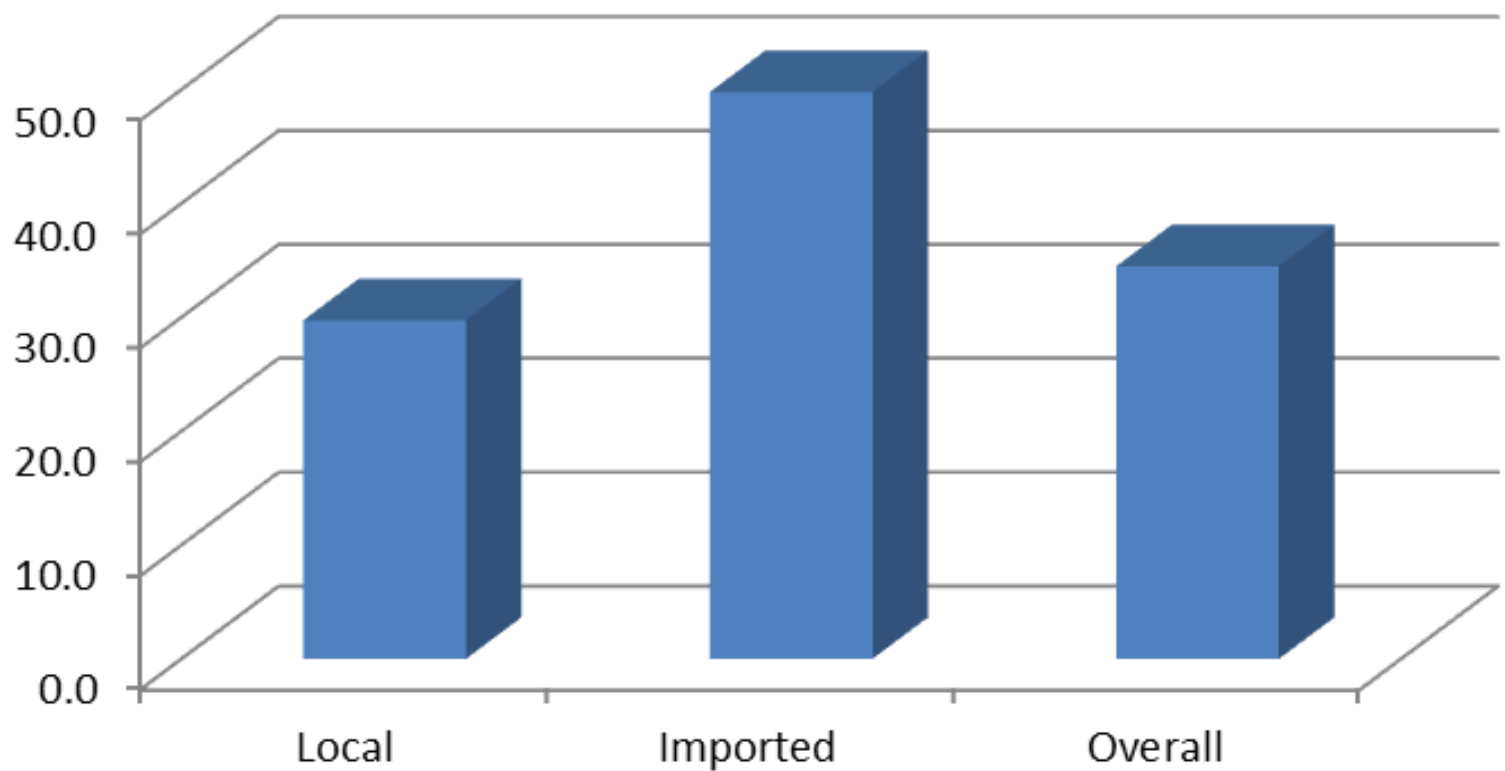
Sero-Prevalance



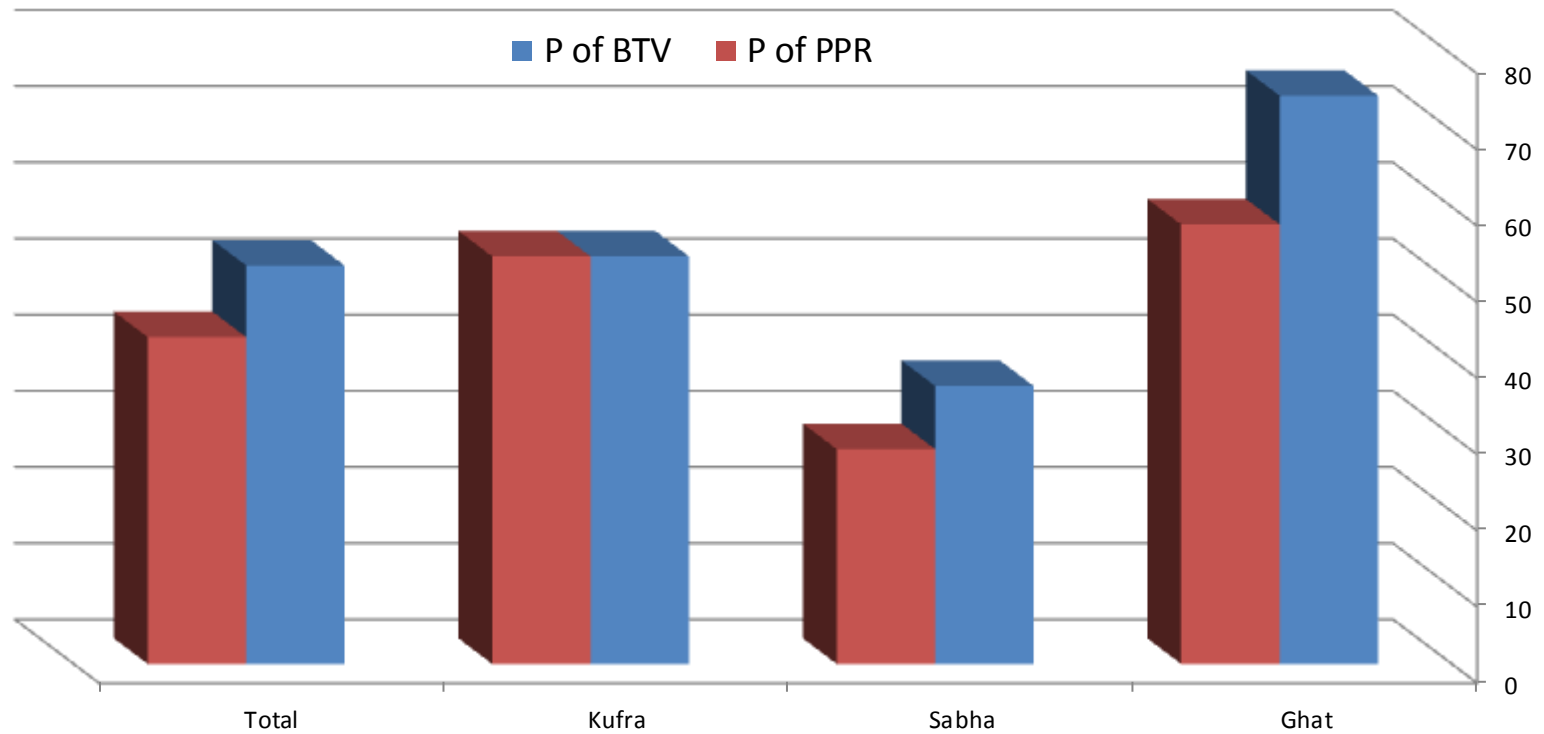
Sero-Prevalance



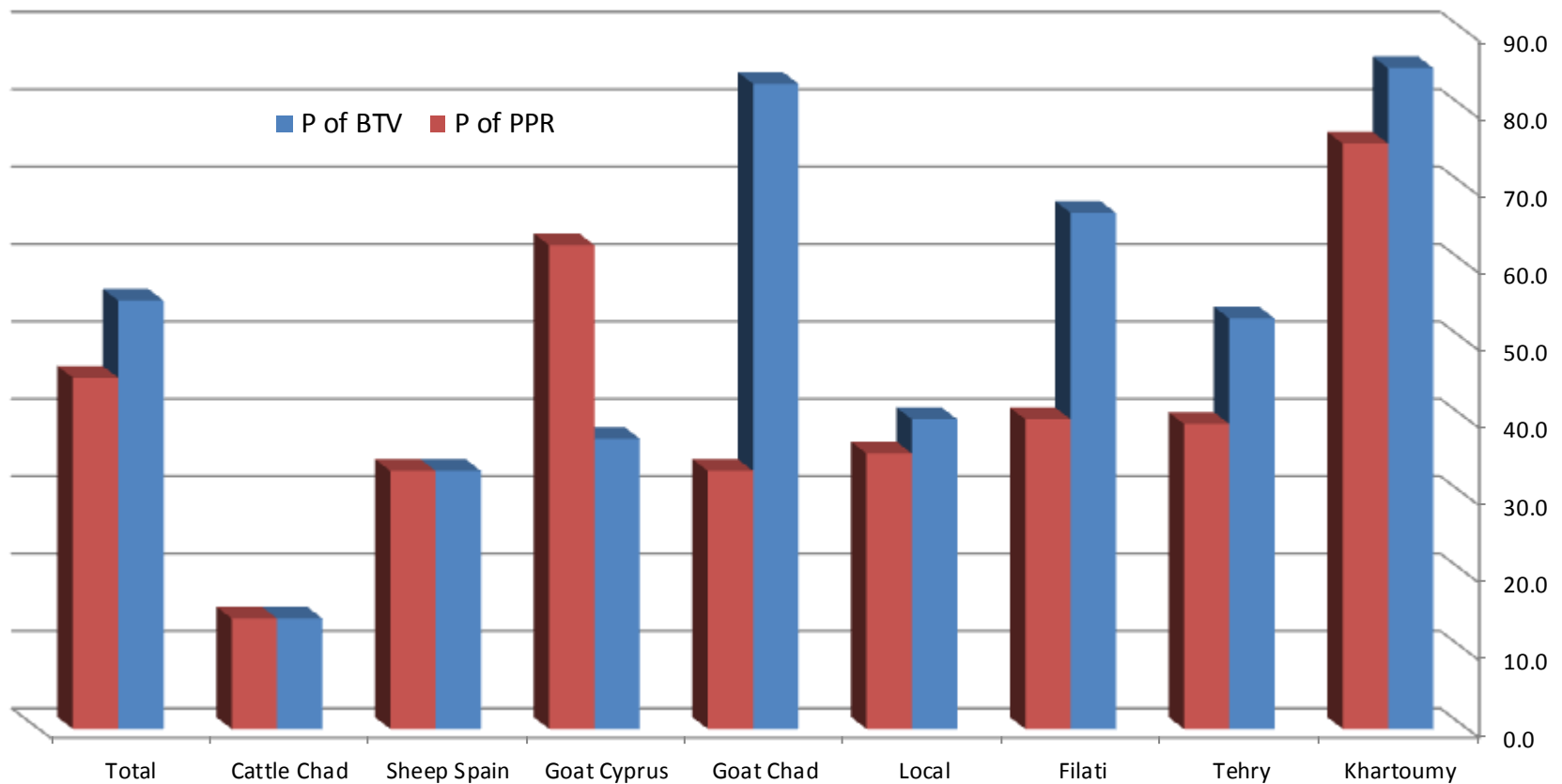
Sero-Prevalance



Prevalence of PPR and BTB



Prevalence of PPR and BTV





Movement of the Animals





شكرا

Thanks