



Slovenian land consolidation experiences and LC-programme

Anka LISEC* and **Tomaž PRIMOŽIČ****

**University of Ljubljana, Faculty of Civil and Geodetic Engineering
anka.lisec@fgg.uni-lj.si*

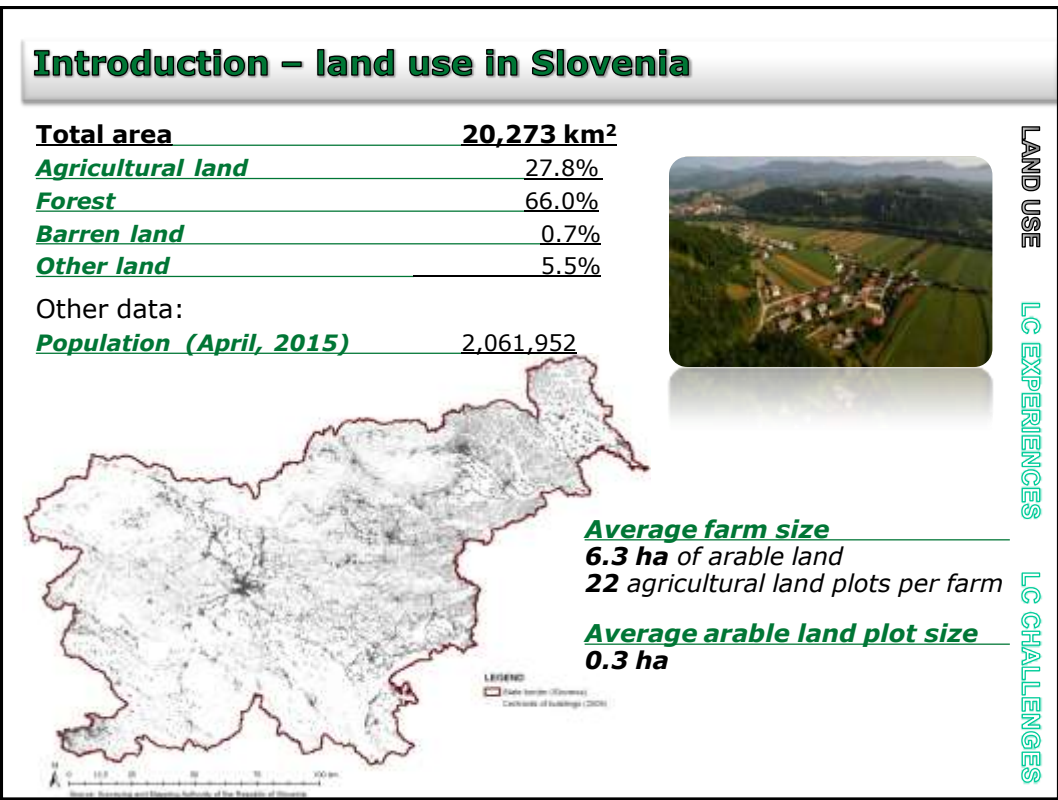
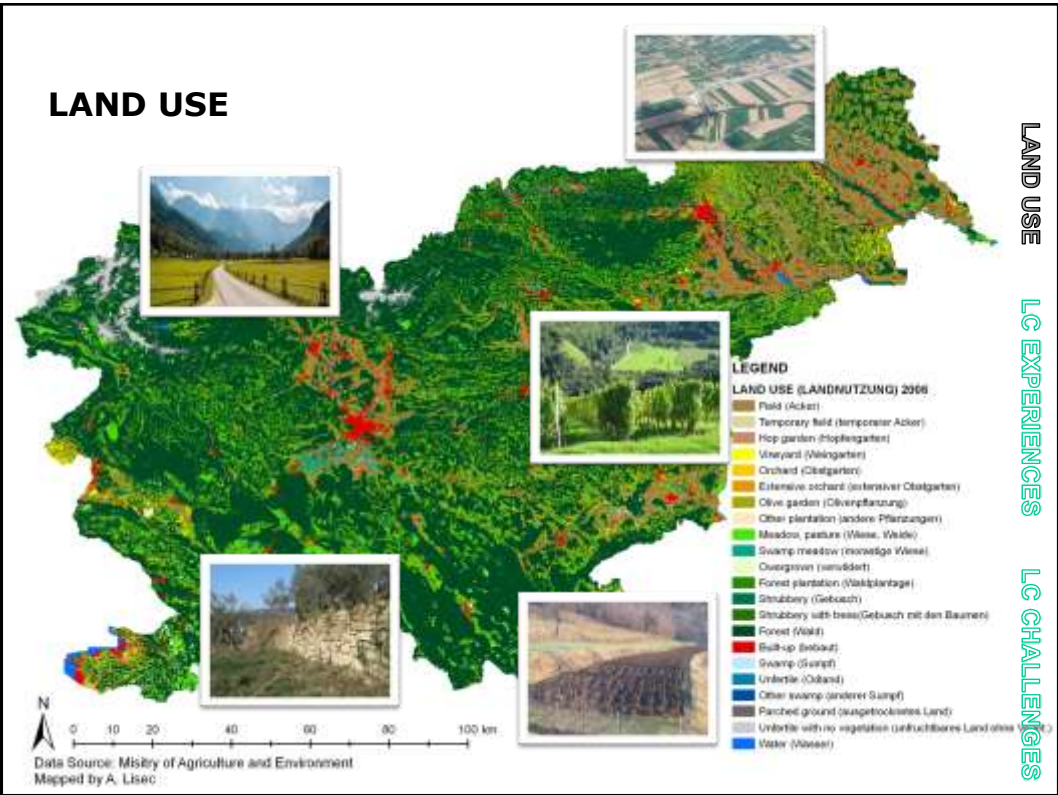
***Ministry of Agriculture, Forestry and Food of RS
tomaz.primozic@gov.si*

Ankara: October 5-7, 2015

Content

- ❑ Land use in Slovenia (rural areas), land fragmentation
- ❑ Land consolidation (LC) experiences
- ❑ Planned LC and other measures for rural development, challenges
- ...





Reasons for land fragmentation – LAND REFORMS

Before WWI

- Land reform after 1848
- **First LC legislation** in the end of the 19th century!

Before WWII

- Land reform plan in 1920s – not realized
- Average arable land plot size *0,30 ha (in 1848) > 0,06 ha (in 1940)*

Period 1945-1990 - nationalization process:

- *urban land was nationalized*
- **over 90% of agricultural land remained private**

Period 1991-

- Land restitution process started in 1991
- Transfer of ownership to:
 - *The Fund for Agricultural Land and Forests, 1993*
 - *Local communities (urban land)*
- The majority of land denationalization cases are solved
- **Land consolidation projects (1996 -)**

Austro-Hungarian state

(1st WW) - Kingdom of Serbs, Croats and Slovenes

(2nd WW)
Yugoslavia

Slovenia (1991)

LAND USE
LC EXPERIENCES
LC CHALLENGES

Land consolidation before 1991 in Slovenia

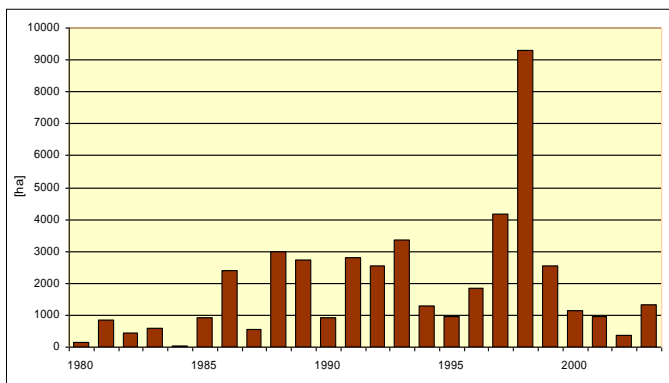
History of the implementation of land consolidation in Slovenia:

- before the WWII (Austrian influence)
- 1. period after the WWII: 1945-1973 1333 ha
- 2. period after the WWII: 1976-1990 54,344 ha

Uncompleted projects in the beginning of 90s (125 LC projects)



PROGRAM OF LC REHABILITATION

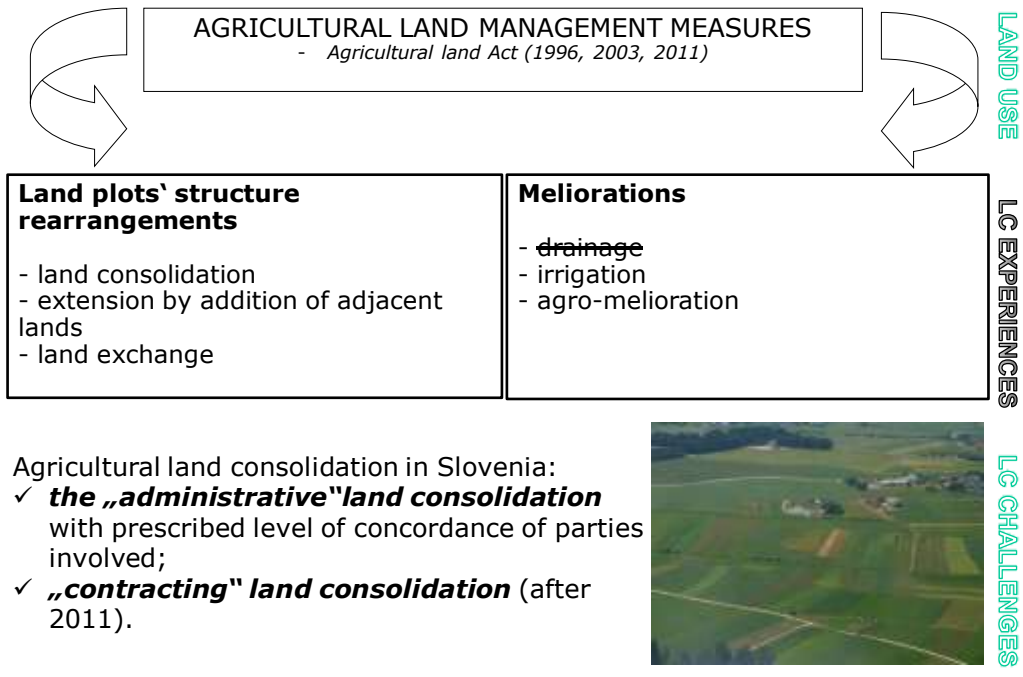


NEW LEGISLATION IN 1996 (Agricultural land Act),
amendments in 2003 and 2011

Completed LC projects

LAND USE
LC EXPERIENCES
LC CHALLENGES

Land consolidation after 1991



The impact of past experiences on today's practice

- 1) Negative connotation of past land consolidations:
- often enforced
 - negative environmental consequences
 - negative landscape consequences
 - complex and lasting procedures
 - etc.

2) Traditional bonds to land

....



Good practices
(active participation,
voluntary approach ...)



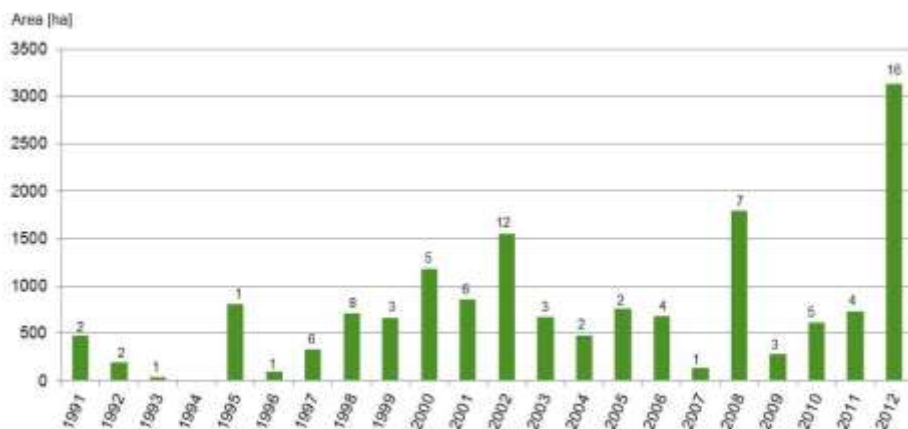
LAND USE

LC EXPERIENCES

LC CHALLENGES

Land consolidation in Slovenia after 1996

- LC under National Rural development programme (1996-2006)
- Rural Development Programme (2007-2013)
- Rural Development Programme (2014-2020)

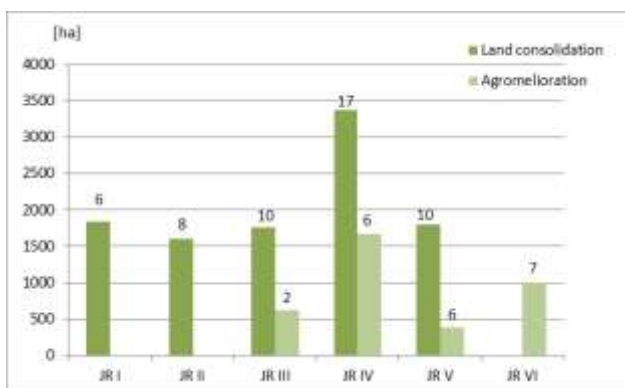


Administrative land consolidation projects of rural land (Lisec and Primožič, 2013)

LC and RDP 2007-2013

Rural Development Programme (2007-2013):

- 51 projects on 10,370 ha, 12.2 mio euros
- 21 agromelioration projects on 3671 ha, 2.9 mio euros



- 7 new irrigation systems (1753 ha)
- 2 renovations of irrigation systems (396 ha)
- financing of small irrigation systems



LC study cases - Krog and Prigorica

	KROG (2008-2010)		PRIGORICA (2001-2008)	
Area	402 ha		400 ha	
	Before LC	After LC	Before LC	After LC
Number of land plots	1132	541	4600	1160
Average plot size	3551 m ²	8147 m ²	867 m ²	3444 m ²
Average number of land plots per land owner	2.4	1.2	7	1.9
Roads	73,795 m ²	79,794 m ²	12,350 m ²	62,116 m ²

LAND USE
LC EXPERIENCES
LC CHALLENGES

KROG



Preparation: 2007
Introduction: 2008
Execution: 2008-2010
Appeals: /
Conclusion: 2010

LAND USE
LC EXPERIENCES
LC CHALLENGES

PRIGORICA



Preparation: 2000
 Introduction: 2001
 Execution: 2002-2004
 Appeals: 2004-2008
 End: 2008



LAND USE

LC EXPERIENCES

LC CHALLENGES

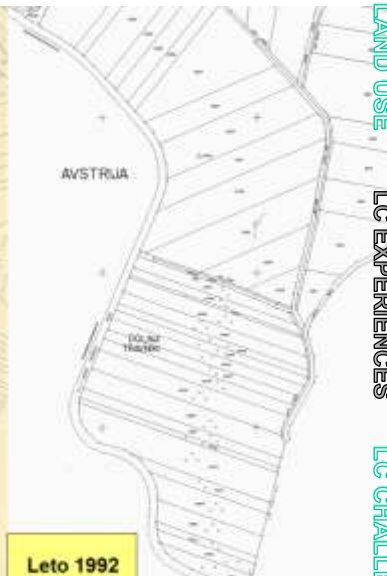
LC AT THE STATE BORDER



Leto 1859



Leto 1960



Leto 1992

LC and regulation of the river at the state border with Austria

LAND USE

LC EXPERIENCES

LC CHALLENGES

LC and RDP 2014-2020

Approved RDP 2014-2020 on 13th of February 2015!

Sub-measure M04.3, **investments** to develop agricultural and forest infrastructure for better land management:

- ✓ **Implementation of agro-meliorations in land consolidation areas;**
- ✓ **Construction of large irrigation systems;**
- ✓ **Technological upgrading of large irrigation systems, and**
- ✓ Arrangement of forest infrastructure.



LAND USE

LC EXPERIENCES

LC CHALLENGES

Other financial support?

Land consolidation and infrastructure projects



Land consolidation as pre-project for irrigation systems



LAND USE

LC EXPERIENCES

LC CHALLENGES

Institutional & political support

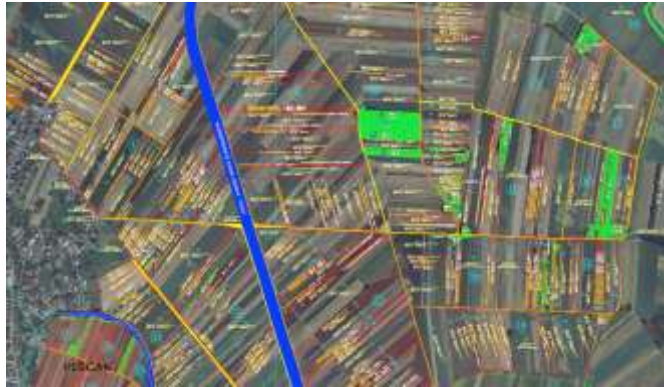
Better institutional support:

- different sectors do not support LC (trademark „agriculture“)
- a lack of information in the areas with no or less experiences



**Education
Promotion
Good practices**

...



*Holistic approach to land rearrangement in the rural areas is requested
LC also as environmental, nature conservation projects?*

LAND USE
LC EXPERIENCES
LC CHALLENGES

Developing good practices ...

1) Sustainable planning – „green approach“



DEGRADATION



„GREEN“ APPROACH



LAND USE
LC EXPERIENCES
LC CHALLENGES

Developing good practices ...

2) Voluntary approach, public participation



3) **Soft skills** are very important (communication, solving conflicts, mediation etc.)



LAND USE

LC EXPERIENCES

LC CHALLENGES

Promotion of benefits of LC!

Challenges of land rearrangements in rural areas:

- land fragmentation
- possession in the reality is not officially registered low quality of cadastral data
- reducing transport costs, emissions
- other benefits ...



LC and IRRIGATION (droughts)



PROTECTIONS AGAINST HAILS (hailstorms)

Bio-FARMI



LAND USE

LC EXPERIENCES

LC CHALLENGES

Conclusions ...

- The interest in land consolidation is being increased
- **Different benefits** of LC are being recognized: good practices (**active participation!**)
- Holistic land use planning is more acceptable also for land owners
- Knowledge transfer



BUT

- LC in protected areas – needed better cooperation between sectors
- LC is not only agriculture measure
- limited financial support - LC and large infrastructure projects?
- LC in rural settlements and forests limited
- ...

PROGRAM RAZVOJA PODEŽELJA

Evropski kmetijski sklad za razvoj podeželja
(Evropske investicije v podeželje)

REPUBLIC OF SLOVENIA
MINISTRY OF AGRICULTURE, FORESTRY AND FOOD

University of Ljubljana
Faculty of Civil and Geodetic Engineering

THANK YOU FOR YOUR ATTENTION!

The Slovenian land consolidation experiences and program

Anka LISEC and Tomaž PRIMOŽIČ

anka.lisec@fgg.uni-lj.si
tomaz.primozic@gov.si

Official conclusion of LC project, Krško polje