



Dutch experience in the surveillance of WPM as a high risk pathway for plant pests

Bram de Hoop
delegation leader of The Netherlands
Standing Committee on Plant Health - Brussels

Presented by: Zsuzsanna Dancsházy (Hungary)

Regional workshop on Implementation of Phytosanitary Standards in Forestry

Nyíregyháza, Hungary
9-11 June 2015

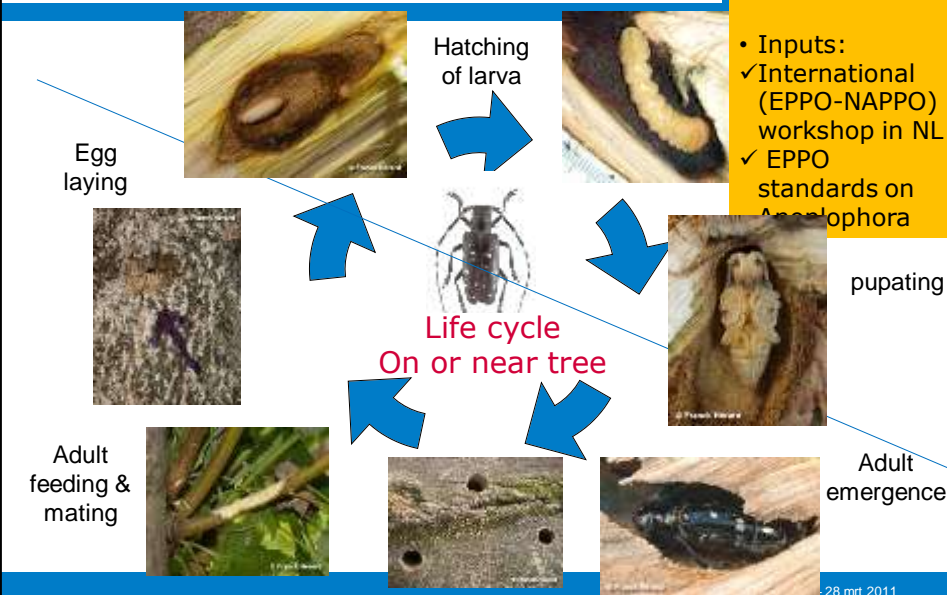
1

NPPO of the Netherlands
Ministry of Economic Affairs, Agriculture and Innovation

Highest risk: *Anoplophora glabripennis* Asian longhorn beetle

- 2006: Starting contingency planning (ALB)

- Inputs:
 - ✓ International (EPPO-NAPPO) workshop in NL
 - ✓ EPPO standards on *Anoplophora*



28 mrt 2011

NPPO of the Netherlands

NL summer 2012
Outbreak Winterswijk:
private garden within city



EXTERIOR TREE

Reported by a member of the public

- 1 *Acer platanoides* – in the street
- in the tree: 12 larvae – 40 exit holes (22 new, 18 >3 years).
- 16 beetles – immediate vicinity
- Origin: WPM stone China (2007!)
- 100 m clera-cut zone,
- 350 trees destroyed



INTERIOR TREE

NPPO of the Netherlands
Ministry of Economic Affairs, Agriculture and Innovation

Almere

Legenda

- Almere
- Almere
- Almere

Almere

First ALB outbreak in NL

Outbreak & eradication of *Anoplophora glabripennis* 2010-2011

Detection: Pruning company November 2010



9 lane trees *Acer pseudoplatanus* + 1 *Salix aurita* shrub within 70 m

- approximately 60 exit holes,
- 11 adults beetles (9 dead, 2 living),
- 7 living larvae but no eggs.
- The age of the exit holes: 2007- 2010.



Exit hole

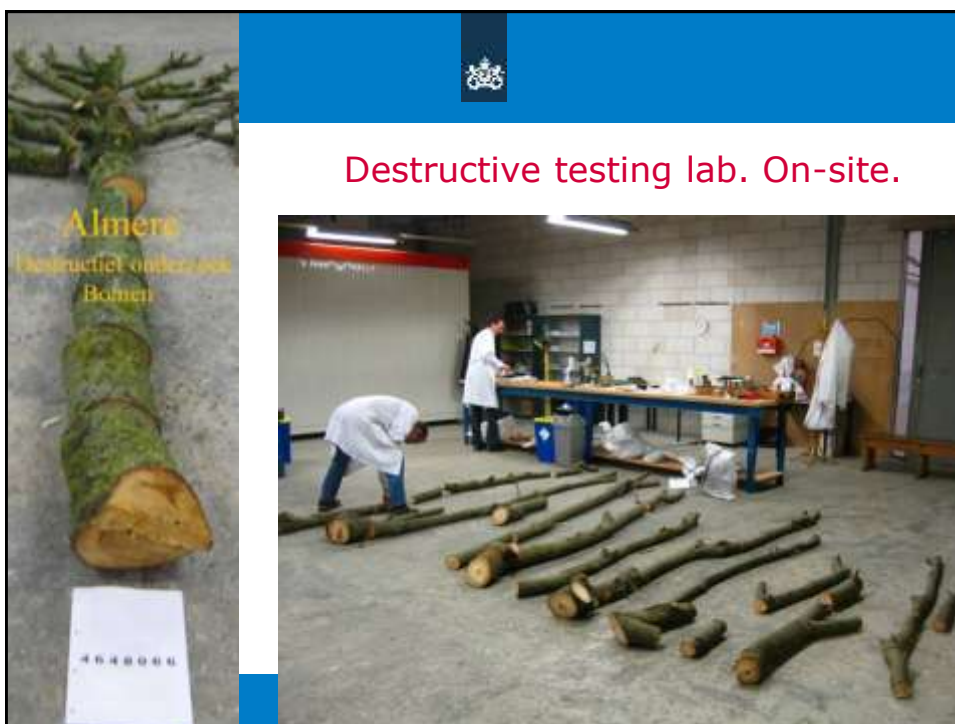
5

NPPO of the Netherlands
Ministry of Economic Affairs, Agriculture and Innovation

Destructive sampling 100 m all plants > 2,5 cm Ø



NPPO of the Netherlands Almere - Anoplophora – 28 mrt 2011
Ministry of Economic Affairs, Agriculture and Innovation



Expansion clearcut area January 2011

- Outer limits outbreak: range 70 m.
- Clearcut area: 270 m.

Final clearcut area
January 2011



Final results clearcut



Surveillance



Each tree inspected in range 1,000 m, including use tree climbers.
Wood packaging material: 184 companies. 536 lots inspected.





Main pathway A. glabripennis: WPM – China



NPPO of the Netherlands
Ministry of Economic Affairs, Agriculture and Innovation

NL CHECKS 74 locations throughout NL

High risk location....



Exit hole

Interception granite stone from China: 2008

Frass

Europhyt: NL/PPS/2008/034





EU imports with harmful organisms - WPM

	2003	2004	2005	2006	2007	2008	2009	2010	2011	2012	Sum:
INDIA	2		5	21	50	40	50	67	122	92	449
CHINA	13	19	17	11	17	24	15	18	20	76	210
INDONESIA			3	1	9		6	2	7	3	31
NA interceptions WPM China Febr.-april 2012:									1	1	29
41x live insects											
Measure: 6747 crates treatment HT											719


NPPO of the Netherlands
Ministry of Economic Affairs, Agriculture and Innovation


Monitoring of WPM of Chinese stones




EU emergency decision

1 April 2013 till 30 September 2013	Combined Nomenclature Code: 2514 00 00	Combined Nomenclature Code: 2515	Combined Nomenclature Code: 2516	Combined Nomenclature Code: 6801 00 00	Combined Nomenclature Code: 6802
No. of incoming consignments entering the EU via the reporting Member State	4	0	18	718	1686
No. of inspected consignments	3	0	10	118	220
Of which, with a harmful organism and without a compliant ISPM15 mark					1x Trichoferus; mark missing
- Of which, with a harmful organism and a compliant ISPM15 mark (please provide breakdown per harmful organism)			1x Batocera lineolata	9 consignments (7.6%) with harmful organisms, of which: 4x Apriona germari 1x Asemum sp. 1x Cerambycinae 1x Elateridae	3 (1.3%) consignments with harmful organisms, of which: 1x Dinoderus minutus 1x Lepturinae 1x Scolytinae 1x Trichoferus
14			NPPO of the Netherlands Ministry of Economic Affairs		

Monitoring of WPM of Chinese stones			 EU emergency decision		
October 2013 – March 2014					
Of which, with a harmful organism and without a compliant ISPM15 mark				0	0
Of which with a harmful organism and a compliant ISPM15 mark			1x Hepialidae	1x Siriidae	1x Brentidae
			Total: finding	12x Prioninae	3x Cerambycinae
				1x Hesperophanini	1x Kalotermitidae
				1x Paranthrene tabaniformis	1x non European Scolytinae
15		NPPO of the Netherlands Ministry of Economic Affairs			

Monitoring of WPM of Chinese stones			 EU emergency decision		
April 2014 – September 2014					
Of which, with a harmful organism and without a compliant ISPM15 mark	0	0	0	0	0
Of which, with a harmful organism and a compliant ISPM15 mark			1x non European Scolytinae	1x A. glabripennis 1x Chlorophorus diadema 3x Cerambycinae 5x Apriona germari	1x Lamiini sp. 1x Batocera lineolata 1x Cerambycinae 2x non European Scolytinae
16			Total: 1 finding NPPO of the Netherlands Ministry of Economic		

Monitoring of WPM of Chinese stones



EU emergency decision

October 2014 – March 2015

Of which, with a harmful organism and without a compliant ISPM15 mark	0	0	0	0	0
Of which, with a harmful organism and a compliant ISPM15 mark				6: (3,9 %) Apriona germari: 3x Cerambycinae Scolytinae	5 (1,7%) Apriona germari: 3x Brentidae Cerambycinae
Of which, without a compliant ISPM15 mark only				4x missing mark) 2,6%	3x missing mark) (1%)
17				NPPO of the Netherlands Ministry of Economic Affairs, Agriculture and Innovation	

2. EU Internal movement:



FURTHER SPREAD PWN PORTUGAL

- Destruction millions of trees

- EU contribution: millions of euros



NPPO of the Netherlands
Ministry of Economic Affairs, Agriculture and Innovation

9

2012 first NL interception of pine wood nematode on PT
wood packaging material



NPPO of the Netherlands
Ministry of Economic Affairs, Agriculture and Innovation



Thank you for your attention