



The Regional Rural Development Standing Working Group (SWG) in SEE

Regional Cooperation in the SWG framework - motivation, history, objectives

Mr. Boban Ilic,
SWG Secretary General

1



The “**SWG**” stands for **Regional Rural Development Standing Working Group in South Eastern Europe**.

It is an **International Intergovernmental Organization**, consisted of governmental institutions responsible for agriculture and rural development in respective countries and territories of Southeastern Europe.

Its managing and coordinative body is the SWG Head Office/Secretariat, based in Skopje, Macedonia.



2

SWG RRD

Motivation

- Re-establishment of “wrecked” ties among professionals, experts from Ministries of Agriculture from ex-Yugoslav countries (Western Balkan countries)
- Exchange of information and experiences related to agriculture and rural development in the EU approximation process
- Joint actions in cross-border areas



3

SWG RRD

Motivation

SWG has been established:

↓

to work on rural development on sustainable principles through:

↓

networking and permanent cooperation between all stakeholders of rural development in the region

2

History

The Regional Rural Development Standing Working Group (SWG) has been established based on the Leipzig Agenda Document 2004, during the Agricultural Policy Forum 2005 entitled “Rural Development –Opportunities for Cooperation in the SEE” in Macedonia & Serbia – 2nd and 3rd, June 2005.

2001 Leipzig, GER

2004 Leipzig

***Agricultural Policy Forum –
where the idea of SWG was born***

2005 Skopje, MK and
Vranje, SRB



History

SWG has been established:

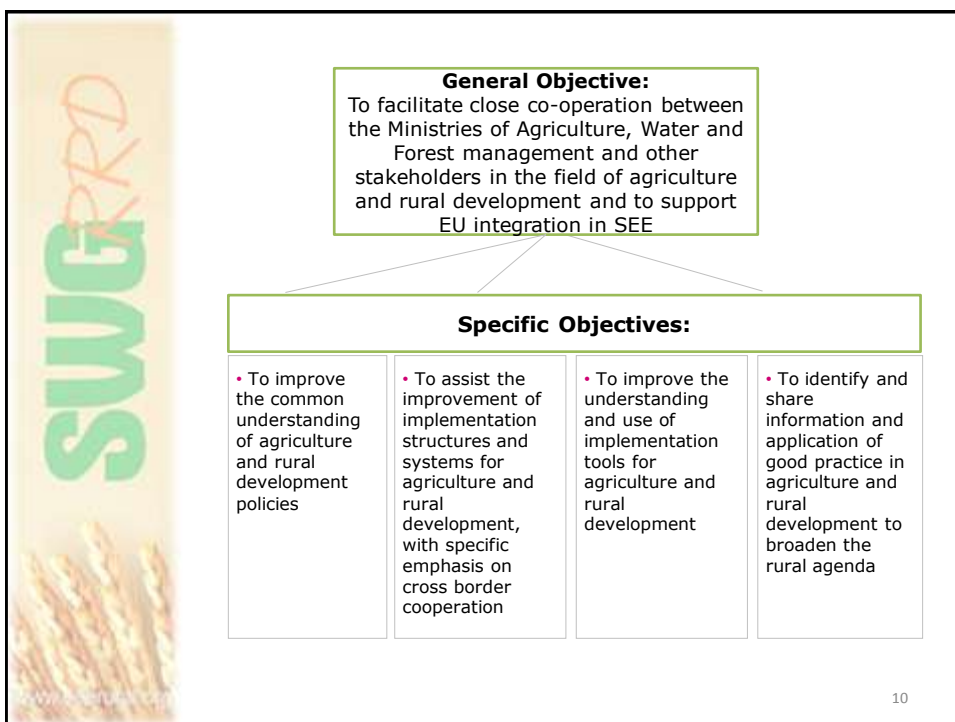
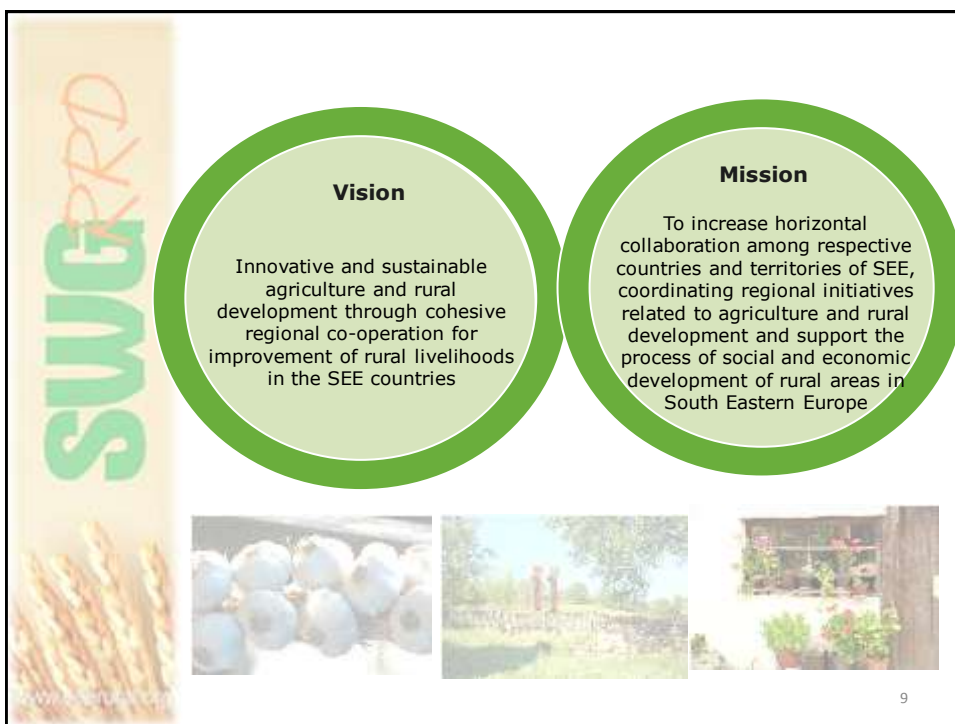
- On the basis of a common wish to establish an informal organization, consisted of representatives of institutions responsible for rural development in the respective countries and territories of South Eastern Europe (SEE)





Aims of the SWG

- To assure a close and permanent cooperation among the Members in order to accomplish the common policy of integration with EU;
- To stimulate and organize initiatives and activities on a national, regional and global scale under the supervision of SWG Assembly;
- To devote itself to an open, active, constructive and critical approach to the ongoing integration processes in Europe towards a world wide cooperation.





SWG RRD

www.europa.eu

Core Functions

- Conducting and facilitating **policy analysis** and presentations;

ANALYSIS AND POLICY PRESENTATION
AND EUROPEAN INTEGRATION
IN SOUTH-EAST EUROPE
2014

SWG


Empowering
rural stakeholders
in the Western Balkans

Resilient Rural
Strengthening Regional Cooperation / Networking in the
Rural and Urban Management (SMEs and Entrepreneurs
Development in the Rural Sector of the South-Eastern
European Countries)

Final Report





giz RRD SWG

12



Core Functions

- **Capacity building** of Member Institutions and other stakeholders;

13



Core Functions

- Identify and develop **tools for agriculture and rural development** considering the regional aspects;





14

SWG RRD
SMEs

Core Functions

• **Networking** to share experiences and information among Member Institutions;






15

SWG RRD
SMEs

SWG Goals for Sustainable Development

- To enhance rural entrepreneurship and the overall rural economy by strengthening the national & regional cooperation on water, land and forest management and use of natural resources;
- To strengthen the capacities of SMEs in the rural cross-border areas on cooperation and trade;
- To harmonize national agriculture, forestry and water policies, including the integration of protective aspects and awareness raising on protection of natural resources and ecosystems;
- To promote mutual understanding and regional cooperation among the stakeholders in particular taking care of the cross-boarder aspects;
- To contribute to sustainable economic growth of a particular region by facilitating implementation of identified actions and in particular by providing investment support with the possible highest added-value and catalytic effects to the rural economies.

16





10 SWG RRD
years

