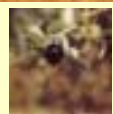


WEST EUROPEAN EXPERIENCES

PORTUGAL



WEST EUROPEAN EXPERIENCES

PORTUGAL

Used Agricultural Area (UAA)







Fragmental and dispersal indicators

YEAR	AVERAGE UAA/FARM (Ha)	AVERAGE N° OF PARCELS/FARM.	AVERAGE UAA/ PARCEL(Ha)
1989	7,1	5,5	1,3
1999	9,8	5,9	1,7

SOURCE: INE, 1989/1999

FARM WITH ≥3 Parcels		FARM WITH ≥6 Parcels		FARM WITH ≤5 Ha UAA		FARM WITH ≤1 Ha UAA	
% Farms	% UAA	% Farms	% UAA	% Farms	% UAA	% Farms	% UAA
63,3	57,5	32,0	32,4	81,6	18,9	26,4	2,1

SOURCE: INE, 1989

WEST EUROPEAN EXPERIENCES

PORTUGAL

COUNTRY	AVERAGE UAA/FARM(HA)
BELGIUM	15,8
DENMARK	34,2
GERMANY	26,1
GREECE	4,0
SPAIN	15,4
FRANCE	29,6
IRELAND	26,0
ITALY	5,6
LUXEMBOURG	31,7
NETHERLANDS	16,1
UNITED KINGDOM	66,6
PORTUGAL	6,7
E.U.	14,8

SOURCE: EUROSTAT, 1995








WEST EUROPEAN EXPERIENCES

PORTUGAL

SUPPORT BY MINISTRY FOR ECONOMIC COOP AND GTZ

1982-84	Preparation of GTZ-support for Portugal in the fields of Rural Development
1984-88	Active consultancy by GTZ-experts (W. Zimmermann) in the fields of: <ul style="list-style-type: none"> - transfer know how generally - establishing administrative competence - development of legal basis and adm./tech. rules - preparing budget resources and EU support - training of staff - starting pilot projects
1986	Entrance to the EU
1988	LC law (1962) renewed and adapted to actual requirements
1989-94	Post contract support by short term consultancy (K.H Thöne, Magel, K. Kollmer and others)
1991	Start of financial support for LC projects by EU

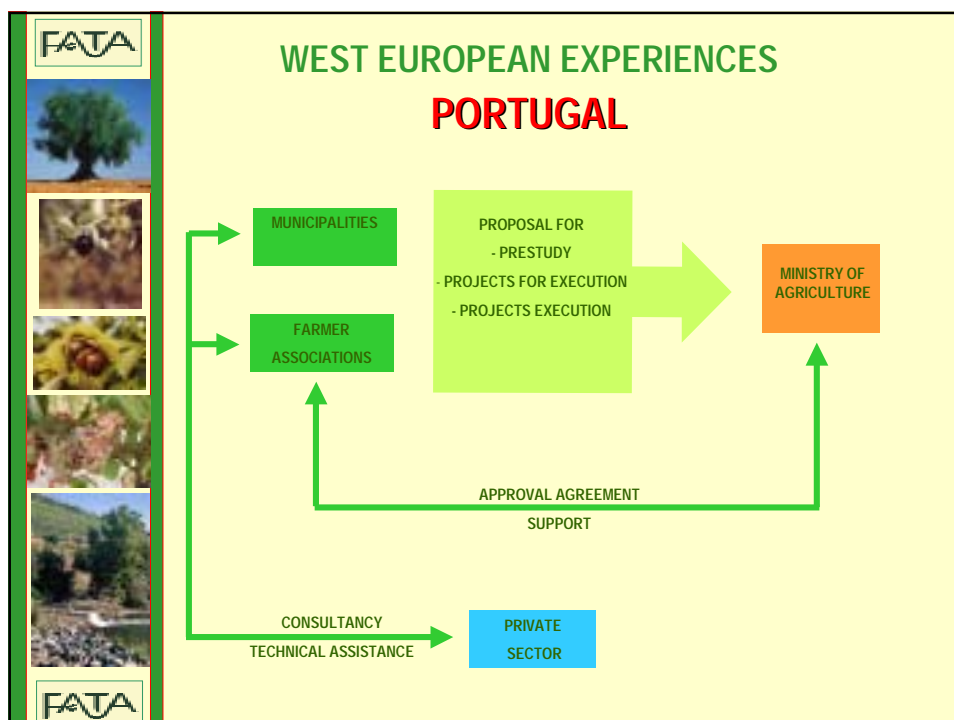
WEST EUROPEAN EXPERIENCES

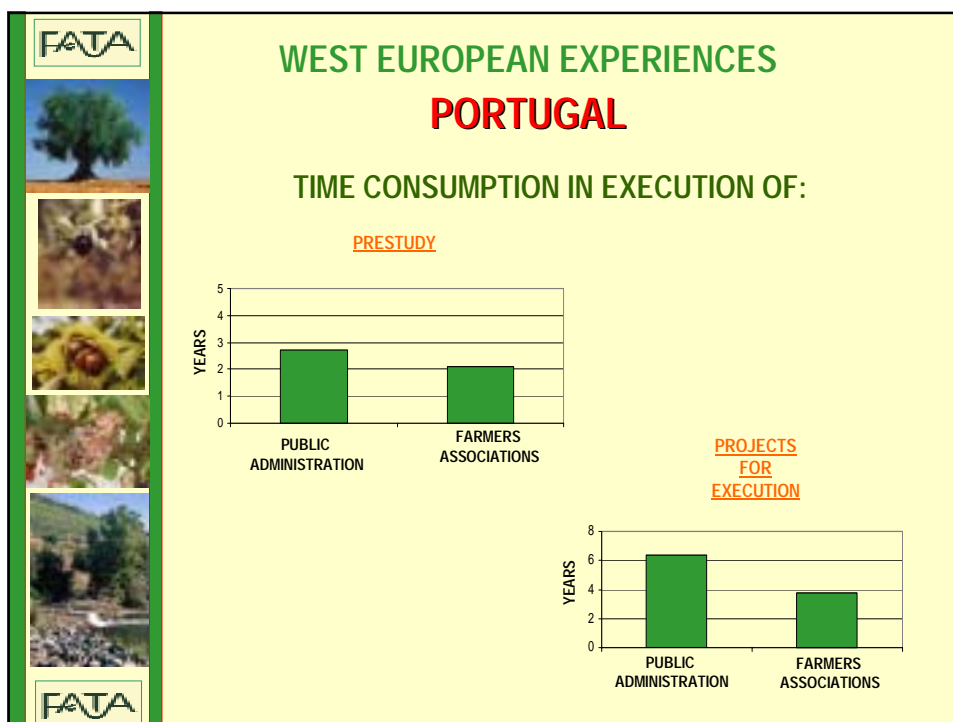
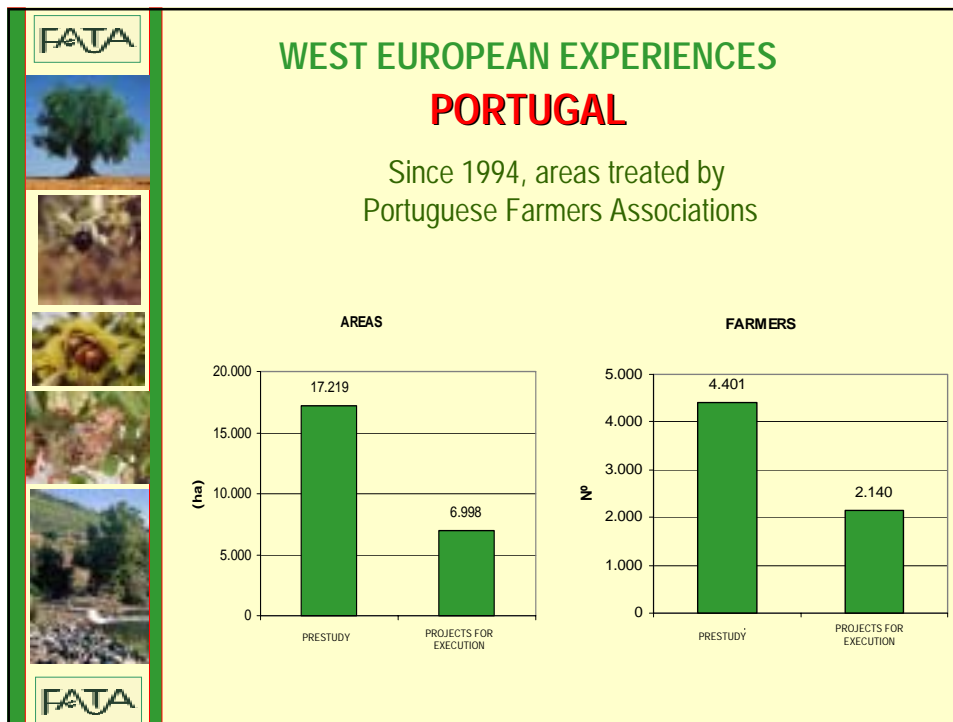
PORTUGAL

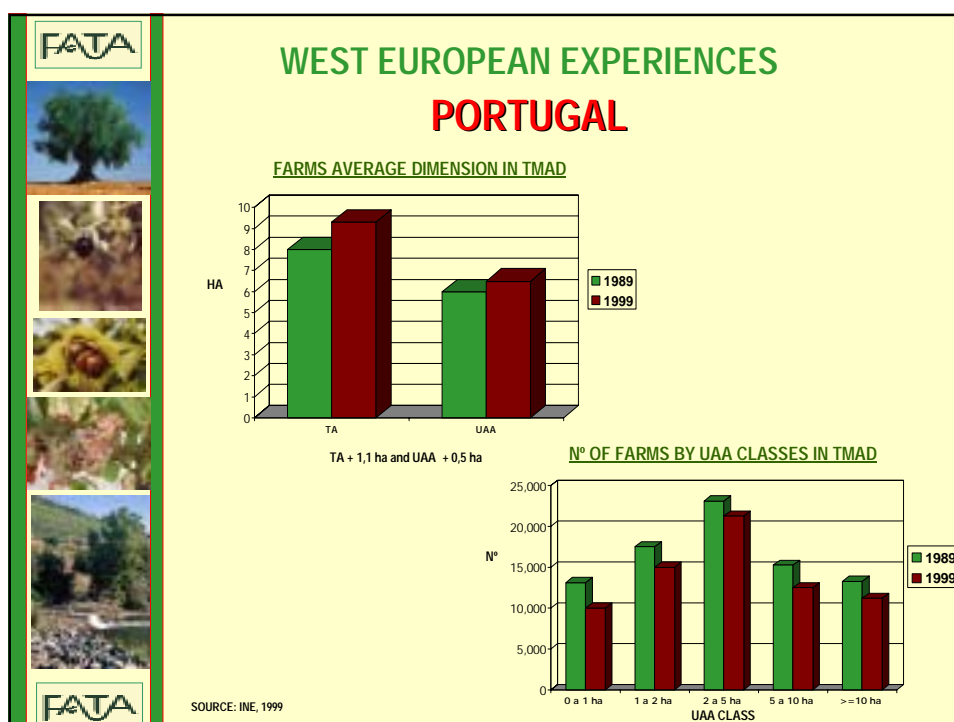
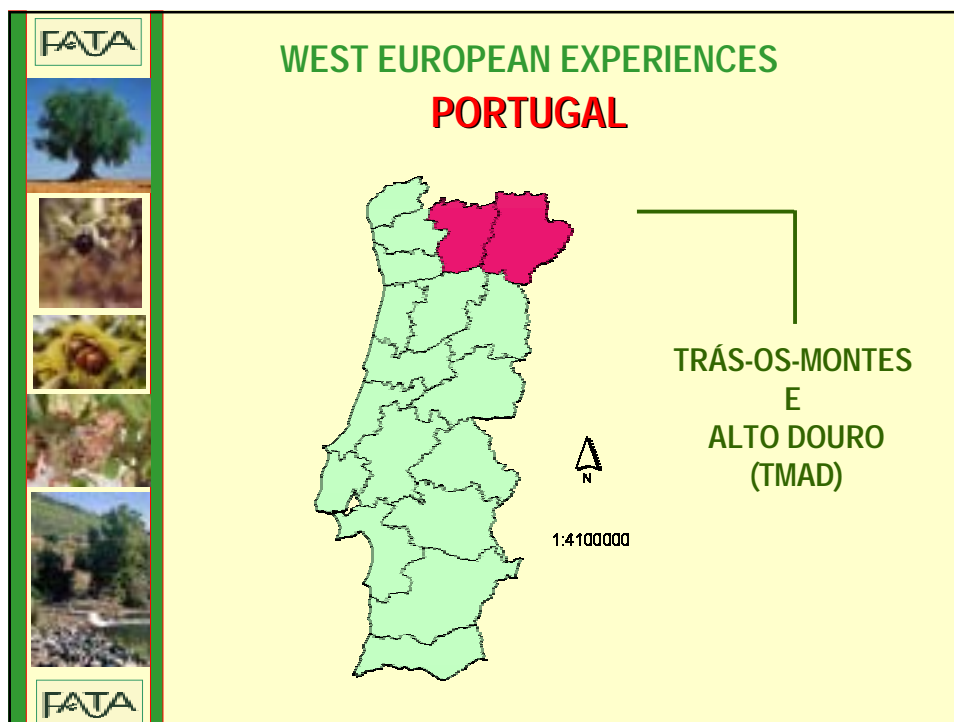
EUROPEAN LANDCONSOLIDATION FINANCIAL POLITICS

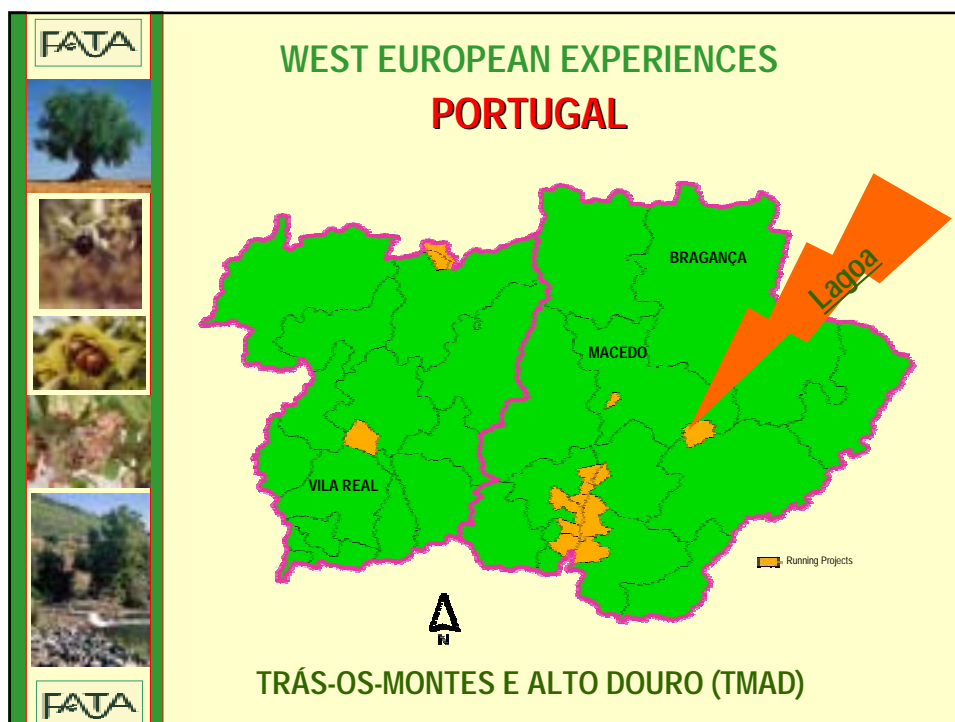
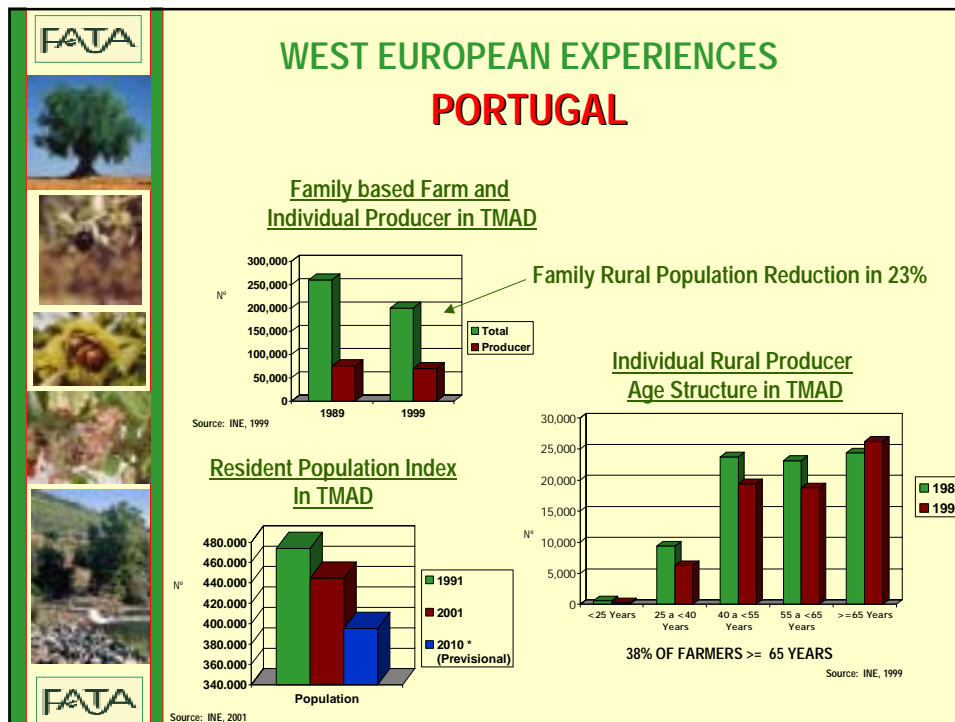
COMMUNITY SUPPORT FRAMEWORK (CSF)

1º CSF 1991-1993		16 537 793.92 Euros
2º CSF 1994 –1999		24 521 268.74 Euros











WEST EUROPEAN EXPERIENCES

PORTUGAL

LAGOA PROJECT



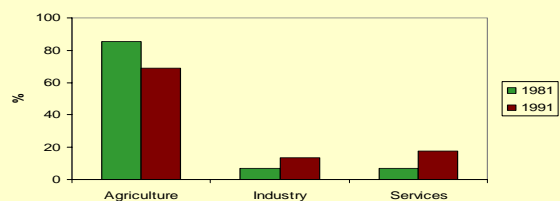
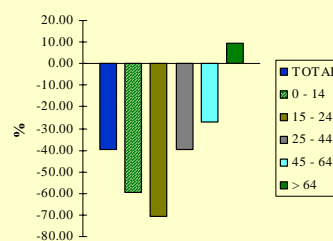
Area: 3452 ha
Distance to municipality: 39,8 Km



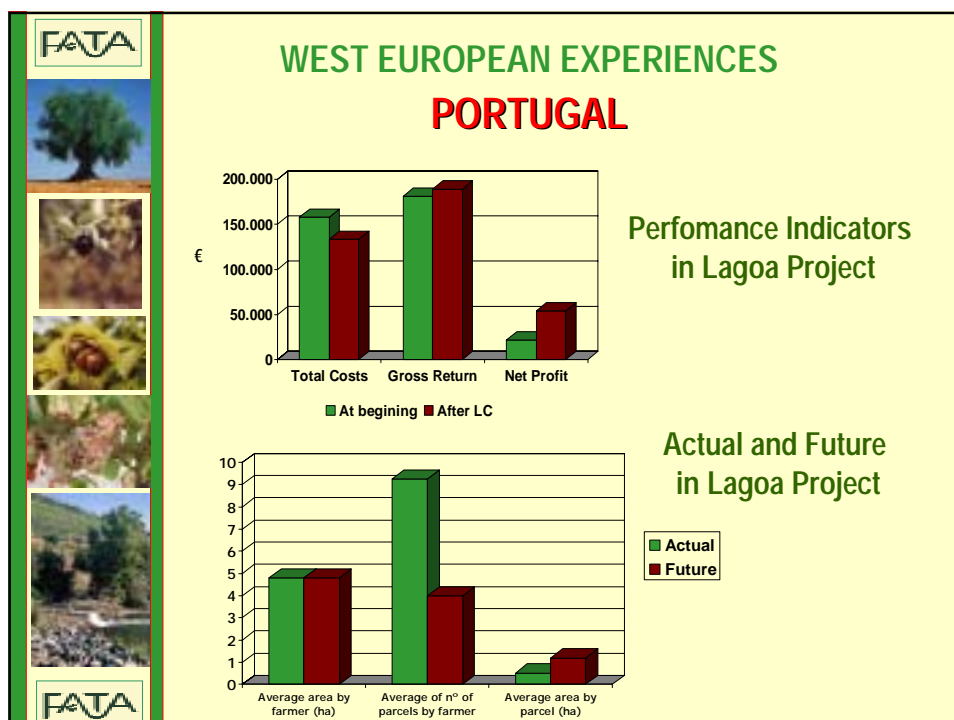
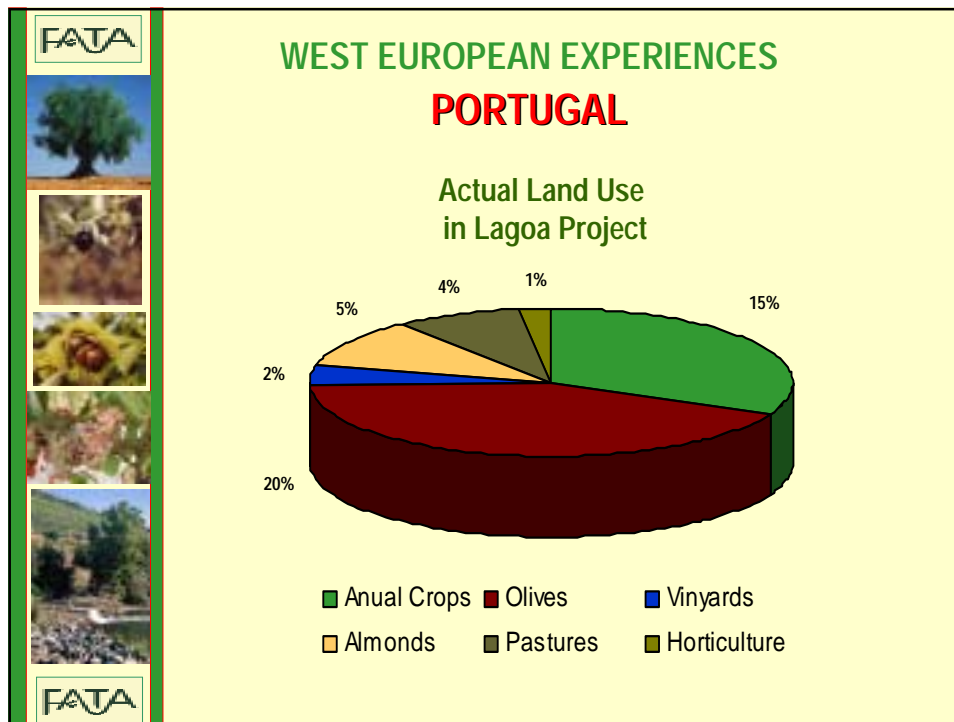
WEST EUROPEAN EXPERIENCES

PORTUGAL

Variation of the
Resident Population
(by age's classes)
in Lagoa Project
1981/91



Evolution of the Employment Sector Structure
in Lagoa Project





WEST EUROPEAN EXPERIENCES PORTUGAL

IMPORTANT INTERVENTIONS

1. To reorganize land property within project execution

Actual Cadaster



Future Cadaster



Road construction



WEST EUROPEAN EXPERIENCES PORTUGAL

GREAT INTERVENTIONS

2. Reforestation
3. Cooperation of Olive oil producers
4. Sharing use of agricultural equipment











WEST EUROPEAN EXPERIENCES

PORTUGAL

CONCLUSIONS

REALIZED NEEDS

- Improvements in the procedures
- Land banking
- Adaption to special requests (eg. village renovation)
- Medium and long term working and financial plans









WEST EUROPEAN EXPERIENCES

PORTUGAL

CONCLUSIONS

POSITIVE ASPECTS

- Active support by farmers associations
- Good capacity and independence within the private sector
- Private sector faster and more efficient than public administration
- Closer contacts to farmers and rural population