



Prague Regional Workshop 2008

**Land Tenure and Land Consolidation –
Land Banks and Impact Assessment
23 - 25 June 2008**

**Ministry of Agriculture, Czech Republic
Food and Agriculture Organization of the
United Nations
COMENIUS**

2008 Prague Workshop on Land Tenure and Land Consolidation - Land Banks and Impact Assessment; 23 - 25 June 2008



FAO's mandate
Food security, poverty alleviation and
rural development

FAO's role – to provide:

- Advice to governments
- Development assistance
- Information
- Neutral venue

2008 Prague Workshop on Land Tenure and Land Consolidation - Land Banks and Impact Assessment; 23 - 25 June 2008

Land consolidation and rural development



First wave of land reform:

- Privatization and restitution
- Land administration (land registration & cadastre)
- Land markets

Second wave:

- Land consolidation

2008 Prague Workshop on Land Tenure and Land Consolidation - Land Banks and Impact Assessment; 23 - 25 June 2008

The interest in land consolidation

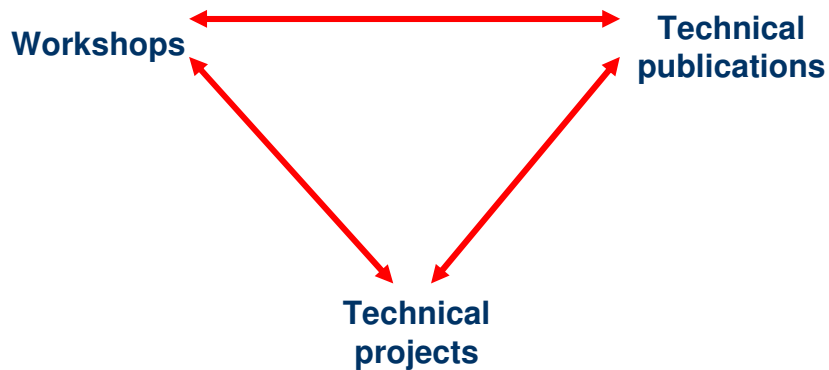


- Many small and fragmented farms which are not competitive.
- The success of rural development projects depends on how they address the small, fragmented farms.

There is now wide-spread recognition of the potential role of land consolidation as a tool to improve rural conditions.

2008 Prague Workshop on Land Tenure and Land Consolidation - Land Banks and Impact Assessment; 23 - 25 June 2008

FAO Programme in land consolidation



2008 Prague Workshop on Land Tenure and Land Consolidation - Land Banks and Impact Assessment; 23 - 25 June 2008

Workshops



- 2002 Munich Symposium
- 2002 Rome Workshop
- 2002 Prague Regional Workshop
- 2004 Tonder Regional Workshop
- 2005 Prague Regional Workshop
- 2006 Prague Regional Workshop
- 2007 Prague Regional Workshop
- 2008 Prague Regional Workshop**

Early workshops defined the need for guidelines on how to start land consolidation
Guidelines were disseminated at later workshops

2008 Prague Workshop on Land Tenure and Land Consolidation - Land Banks and Impact Assessment; 23 - 25 June 2008

Recent Prague workshopsb



2005 – Getting started with land consolidation pilot projects

2006 – Building capacity to expand work in land consolidation

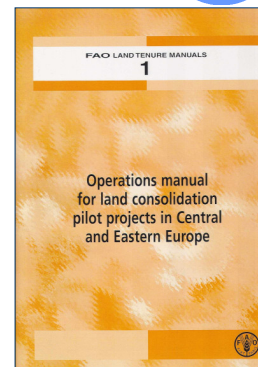
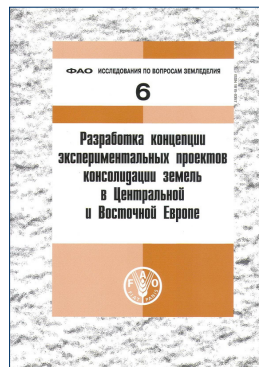
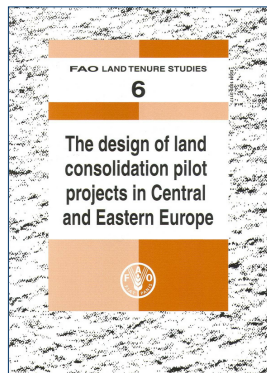
2007 – The EU's rural development programme and its effects on land consolidation

At the 2007 workshop there was interest in learning more about land banking and impact assessment ...

Land Tenure and Land Consolidation – Land Banks and Impact Assessment

2008 Prague Workshop on Land Tenure and Land Consolidation - Land Banks and Impact Assessment; 23 - 25 June 2008

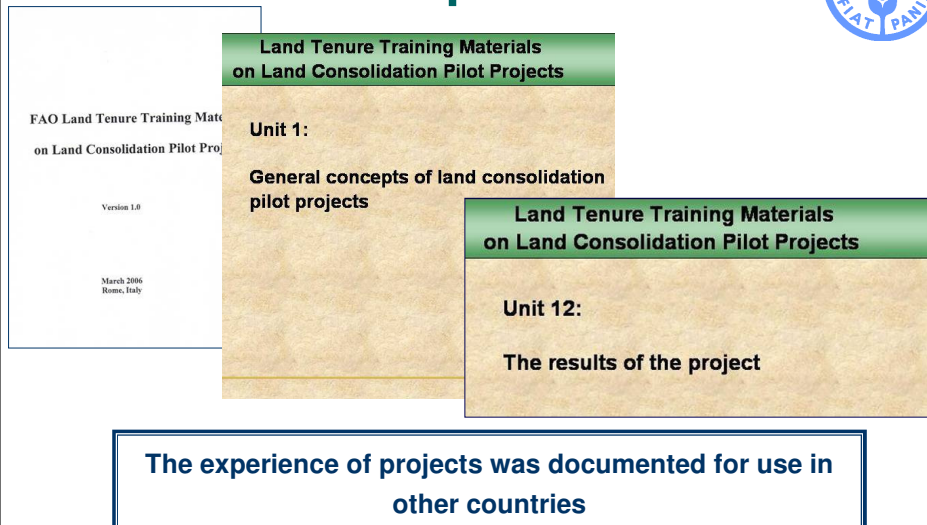
Technical publications



Guidelines were produced on how to design and operate pilot projects.

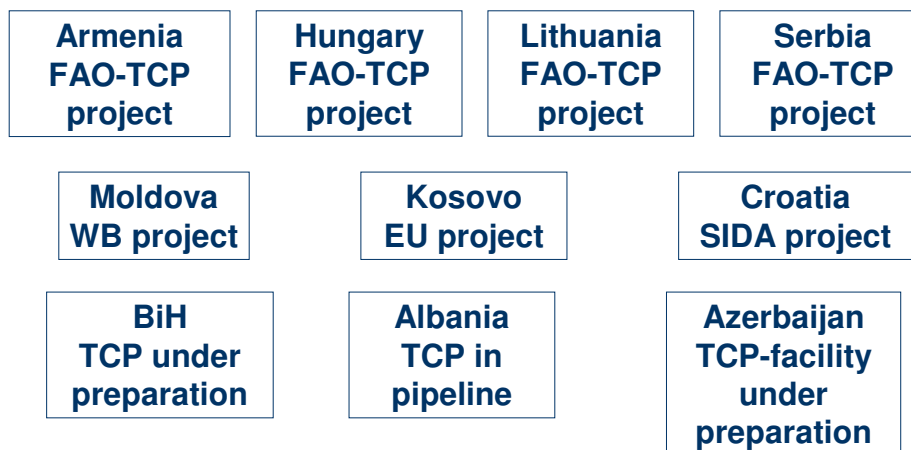
2008 Prague Workshop on Land Tenure and Land Consolidation - Land Banks and Impact Assessment; 23 - 25 June 2008

Technical publications



2008 Prague Workshop on Land Tenure and Land Consolidation - Land Banks and Impact Assessment; 23 - 25 June 2008

Projects



2008 Prague Workshop on Land Tenure and Land Consolidation - Land Banks and Impact Assessment; 23 - 25 June 2008

Approaches to land consolidation



Lessons can be learned from others –
but countries should develop their own solutions.

FAO has recommended that countries develop strategies to guide how land consolidation should be introduced.

2008 Prague Workshop on Land Tenure and Land Consolidation - Land Banks and Impact Assessment; 23 - 25 June 2008

Approaches to land consolidation



It has been common in many countries to have compulsory participation of land owners

FAO has recommended that countries consider options that include voluntary approaches to:

- reduce costs
- implement projects in less time
- overcome the lack of trust by citizens when there is a history of coercion
- introduce participatory approaches

2008 Prague Workshop on Land Tenure and Land Consolidation - Land Banks and Impact Assessment; 23 - 25 June 2008

2008 Prague workshop



- Provide information on:
 - Land banking as an instrument for efficient land administration and land consolidation
 - Methodologies for monitoring, evaluation and impact assessment of land consolidation
- Identify issues of importance to countries of the region – are there common responses?
- Strengthen the peer network of land administration professionals who are responsible for implementing land consolidation projects in the region
- Help identify new issues for addressing under our mandate of land tenure

2008 Prague Workshop on Land Tenure and Land Consolidation - Land Banks and Impact Assessment; 23 - 25 June 2008

2008 Prague workshop



- Land banking as an instrument for efficient land administration and land consolidation
 - overview of the principle of land banking
 - key-experts will provide their experience
 - different countries have introduced different systems of “land banks” in support of land consolidation, e.g. The Netherlands, Denmark, Poland, Spain, etc.
 - update on the developments since the 2004 FAO workshop in Tonder, Denmark
- Methodologies for monitoring, evaluation and impact assessment of land consolidation
 - overview of different methodologies for evaluating the impact of land consolidation
 - first step was introduction of pilot projects for developing and testing approaches and identifying problems and solutions=> second step for longer-term programmes of land consolidation, evaluation of impact becomes crucial
 - senior officials in land agencies have a good understanding of land consolidation, politicians often do not => therefore it is important to develop a basis of economic, social and environmental evidence in support
 - important to develop effective messages for landowners to explain the benefits and implications of land consolidation

2008 Prague Workshop on Land Tenure and Land Consolidation - Land Banks and Impact Assessment; 23 - 25 June 2008

New technical publication



2008 Prague Workshop on Land Tenure and Land Consolidation - Land Banks and Impact Assessment; 23 - 25 June 2008

Group Work



- **3 groups:**
 - Land banking (Quico)
 - Impact assesement (Frank)
 - Land consolidation and project coordination (Richard)
- **Key questions:**
 - Lessons learnt
 - What's next?
 - Topic for next Prague workshop
 - Technical/normative work, e.g. policy papers/studies, manuals and guidelines
 - Other activities (e.g. regional projects, closer regional cooperation – e.g. RRD-SWG, etc.)

2008 Prague Workshop on Land Tenure and Land Consolidation - Land Banks and Impact Assessment; 23 - 25 June 2008