



**XUNTA DE GALICIA**  
CONSELLERÍA DO MEDIO RURAL



FAO Workshop on Land Tenure and Land Consolidation  
Santiago, February 9th 2009

## The Galician farm model and its relation to the land

Orlando Pablo Vázquez Yañez

Sub-director of farms

Ministry of Rural Affairs of Galicia

## Outline

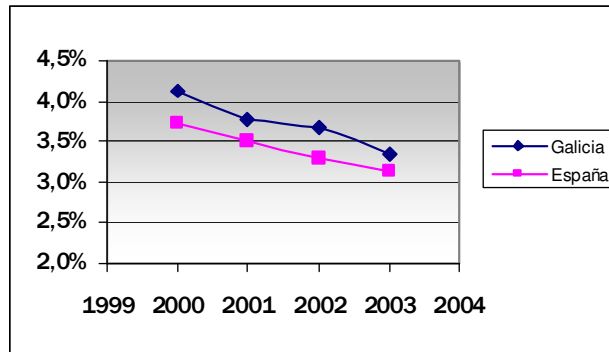


- **I. Introduction:**
  - Galician agricultural data
  - Agricultural labour force
  - Agriculture on the Galician economy
  - Galician land use distribution
- **II. Galician agricultural economy**
  - Gross Added value
  - Animal production
    - Dairy production. The quota
    - Beef production
    - Poultry and pork production: no land dependent Agriculture
  - Plant production
    - Wine
    - Horticulture
- **III. Galician Dairy Production Farm**
- **IV. Conclusions**

## Galician agricultural data: agricultural labour force



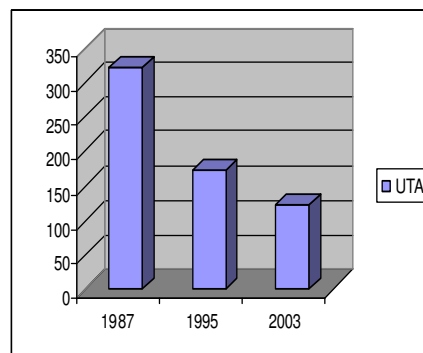
**Agricultural labour force**  
Spanish and Galician employment



## Galician agricultural data: Agricultural labour force



**Evolution of the working labour force (UTA) in Galicia.**



– Reduction of 60% of UTA from 1987 to 2003.

– Galician labour force represents 12,26 % of the total UTA of Spain.

## Galician agricultural data: Agricultural labour force



### UTA per farm (year 2003).

N ° farms	101.865
UTA	122.030
UTA/farm	1,197

### Main responsible by **gender**:

Men	48,04%
Women	51,96%
Total	100.126

	% UTA	UTA
Family workers	94,27%	115.041
Titular	49,83%	60.809
Relative	25,12%	30.652
Other members	19,32%	23.580
External Workers	5,73%	6.989
Fixed	4,04 %	4.925
Eventual	1,69%	2.063

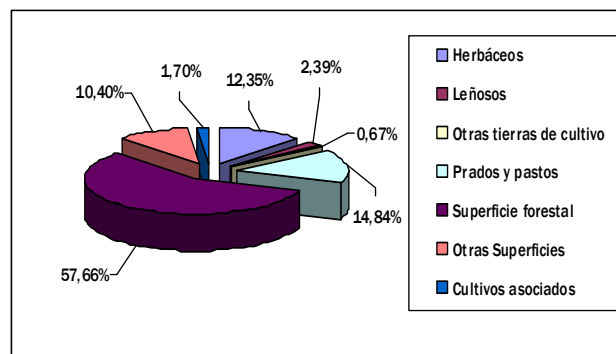
- High level of familiar work
- High level of women as main responsible



## Galician agricultural data: 3 Galician land use distribution



### Total rustic area of Galicia: 2,8 millions of hectares



## Galician agricultural data: 3 Galician land use distribution



### SIZE OF GALICIAN FARMS:

- Galicia: 7,11 ha/farm (22,31 ha/farm Spain)
- 92,37% galician farms less than 20 has
- 0,85% farms more than 50 ha.

### LAND TENURE:

- Property: 81,6% of UAA (vs 69,3% of Spain)
- Renting 11,7% of UAA (vs 26% of Spain)
- High number of paddocks per farm: 17,53 (vs 10,2 Spain)

“Minifundismo” = “Extreme land fragmentation”

## Galicia agricultural data: 3 Galician land use distribution



### Evolution of the number of farms and agrarian area

	1987	1995	2003	Difference
<b>Nº total farms (thousands)</b>	227,4	123,46	101,87	-55,19 %
<b>UAA (thousand has)</b>	710,5	613,89	724,62	1,99 %
<b>UAA / farm</b>	3,13	4,97	7,11	127,61%

- 55,19% of farm size reduction between 1987 and 2003.
- Increase on the average farm size.
- Most of the farm **vanished** where small size

## Galicia agricultural data: 3 Galician land use distribution



Economic Dimension	% Farms
< 4 UED	68,26%
4-8 UED	12,77%
8-16 UED	8,02%
16-40 UED	8,3%
>40	2,65%

- 89,05% of Galician farms are under the **profitability limit** of 16 UED (units of economic dimension).
- Increase de productive dimension is required to reach the adequate economic viability.

## II. Galician agricultural economy



- Distribution of the Gross Added value (GAV)
  - 61 % Animal Production
  - 34,7% Agricultural Production
  - 4,3% Services and non agrarian activities
- Galician agrarian economy is very oriented to Husbandry.
- Spain agrarian economy is oriented to Agricultural Production (59,9% GAV)

## II. Galician agricultural economy: Agriculture



- Very diverse areas especially between the cost and the inland territory.
- Oriented to **animal nutrition products**, mainly trough the production of forage: maize, although it is also important the area used for pastures and silvopastoral uses (traditional landscape)
- Other crops: **potatoes, garden crops** (tomatoes, lettuces, onions, green beans, cabbages and cauliflower):
  - High quality products
  - Small familiar gardens
- **Wine production:**
  - A continuous increase in the production
  - Wine of high quality: 31% of production is under protection and guarantee of their origin

## II. Galician agricultural economy: Husbandry



It has an **important weight** in the Agrarian Production: 43%

- » 14,3 % beef production
- » 28,7 % dairy production

### **Milk production:**

- From 1980-2004 there have been a continuous increase: 2.293,4 millions of litres
- In the last years: stability in the production

### **QUOTA:**

- Galician quota: 2,2 millions of tn
- The Spanish system allows to buy and sell quota between farmers
- Traditionally Galicia has received quota from other regions but quota system is still a limit for the growth of Galician farms
  - Average quota: **158.000** kg/farm (vs 250.000 in Spain)
- There is a high uncertainty: 2015 scenario

## II. Galician agricultural economy: Husbandry



### BEEF:

- A progressive increase since 1980 with a small decrease in 2004 with 92,5 miles of Tn

### PORK:

- It represents the 3,2% of the total Spanish production.
- From 1985-2003 the production has raised more than 20% although there has happened a drop since then.

### POULTRY:

#### About the production of meat:

- It represents more than 12% of the Spanish production with an increase of 74,6 % from 1985-2003.

#### About the production of eggs:

- An important reduction from 122,5 millions of dozens in 1985 to 60,6 millions in 2003.

## III. Galician Milk Production Farm



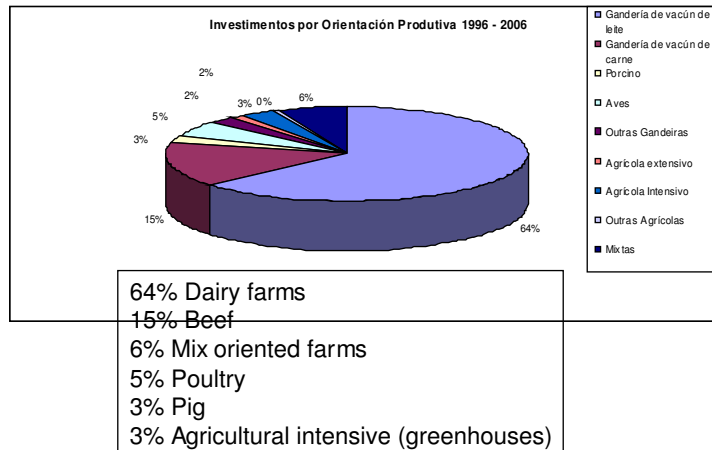
NUMBER OF FARMS: 14.000  
QUOTA (average): 158.000 kg/farm (250.000 Spain)

- Most workers are professionals (full-time workers)
- Limited growth not only in quota but also in land
- 6300 producers with less than 100.000 l
- 4000 farms on milking control (> 8.000 kg/lactation)
- Large dairy farms are increasing.
- Intensifying systems:
  - Pasture  $\longleftrightarrow$  Maize
- Increasing Stocking Rate
- Problems:
  - More dependent on externalities (concentrates)
  - Environmental Handicaps (Water pollution, nitrates directive)
- Land demanded

### III. Galician Milk Production Farm



Investment on Galician Farms (FEOGAo supported)



### III. Galician Milk Production Farm



Galician dairy profitability program 2005 (F. Barbeyto Nistal)

- UAA : 19,7 has
- Stocking rate: 2,65 LU/has
- Average dairy cows: 37
- Milk yield: 7.185 l/year
- Production 267.000 l
- Concentrate use: 0,33 kg/l
- Concentrate price: 215 €/ton
- Gross margin: 33.000 €/farm



## IV. Conclusions



- Galicia is still an agrarian country
- Land is a limitation to increase production
- “Minifundio”
- Most agrarian production is oriented to husbandry
- Mainly beef and dairy
- Viability of farms depends, among other factors, on land
- Optimal use of this resource is required
- Land is a resource and a culture



**Thank you very much for your attention!**

