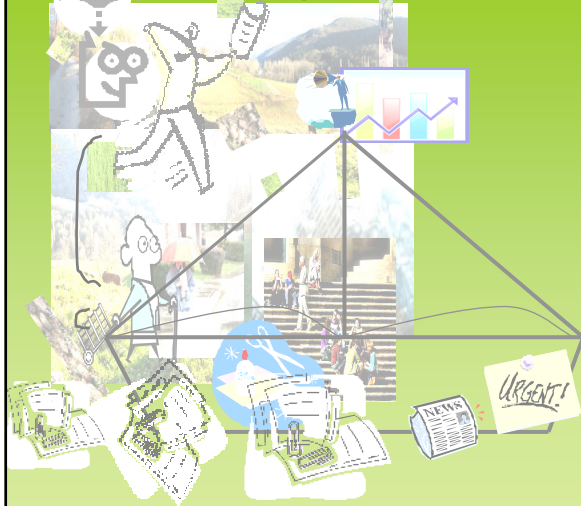


Monitoring the Land Bank in Galicia



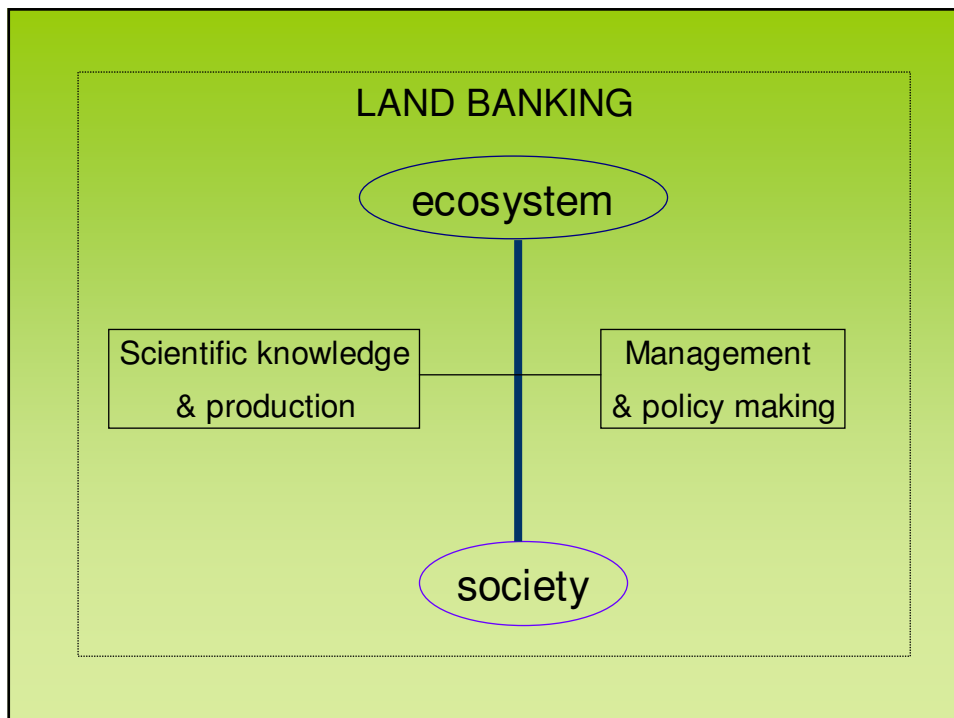
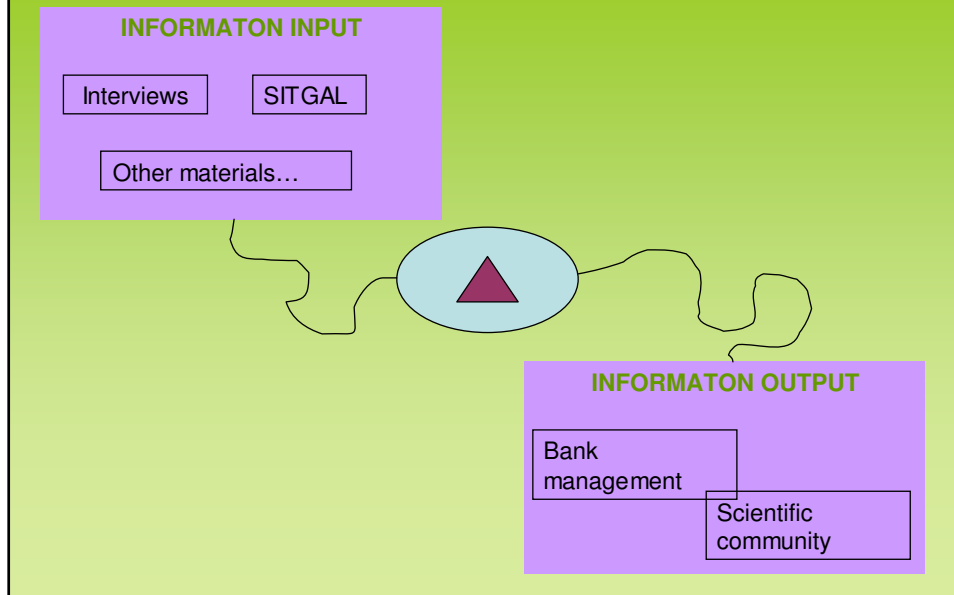
A context
overview

Elsa Coimbra
February 2009

Summary

- I. Work done (a long story short)
- II. Broad context with people zoomed in
(the play at hand)
- III. From particular to the general: clues, hints
and threads

I. A long story short



II. The play at hand

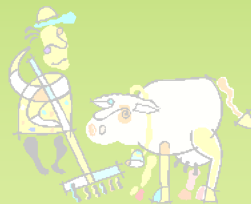


countryside=poverty=ignorance=
no future

Land market basically stuck

A region with strong rural identity

A political turn with a new nationalist government



Political idea:



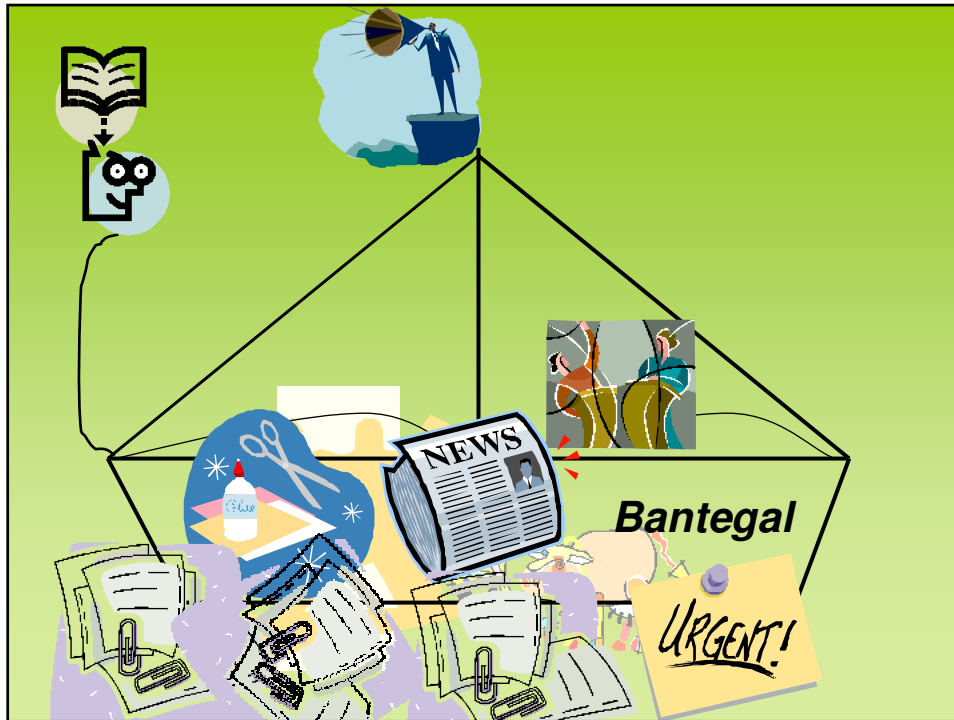
mobilize land



have bigger productive farms which are economically fit to survive in our current context.



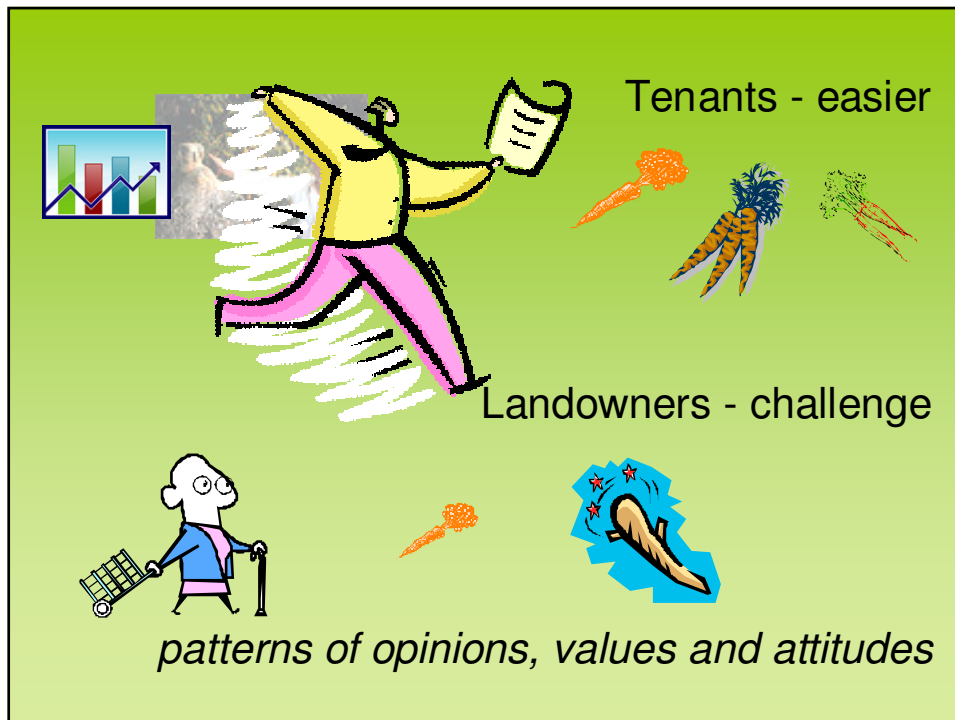

Galician Land Bank



People zoomed in

Managers
Technicians
Potential bank clients
Actual bank clients


 A collage of various icons and images on a green background. At the top left is a bar chart with a blue arrow pointing upwards. To its right is a person wearing a hard hat. Below the bar chart is a muscular person in a yellow shirt. At the bottom left is a cartoon character of a person with a large head and a small body. The text 'People zoomed in' is written in a black, italicized font. Below it are the words 'Managers', 'Technicians', 'Potential bank clients', and 'Actual bank clients' in a black font.

Reserve/suspicion

- General conservative attitude towards change
- State/administration
- Disempowerment

Issues to keep in mind considering "good governance" strategies



capacity building, stakeholder participation

Locality & diversity



- Depressed regions – motivation at its lowest
- Exclusion by default
- Significant diversity & great masses of “depressed regions”

Flexible tools that tackle different scales/realities/needs



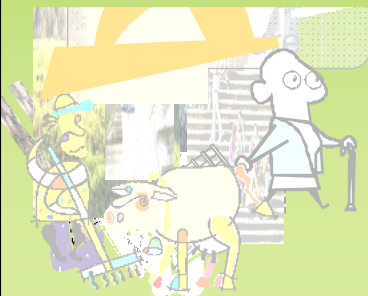
capacity for adaptation
social equity

Norms & sanctions

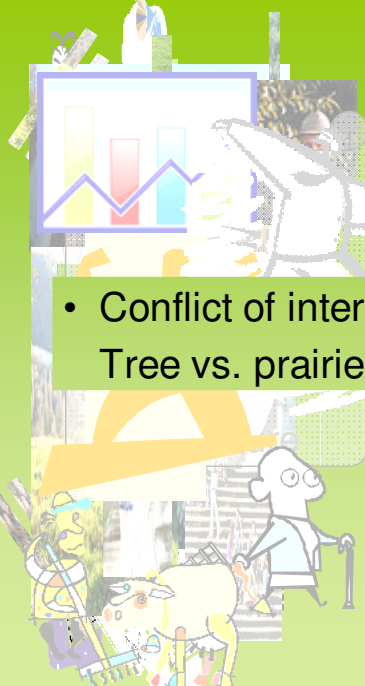


- How do they work with real people?
- What is legal is not necessarily legitimate

Seek to know how official & unofficial versions relate




Efficiency...popularity



The use of land

- Conflict of interests
Tree vs. prairies

think and act towards a
multidimensional
rural world

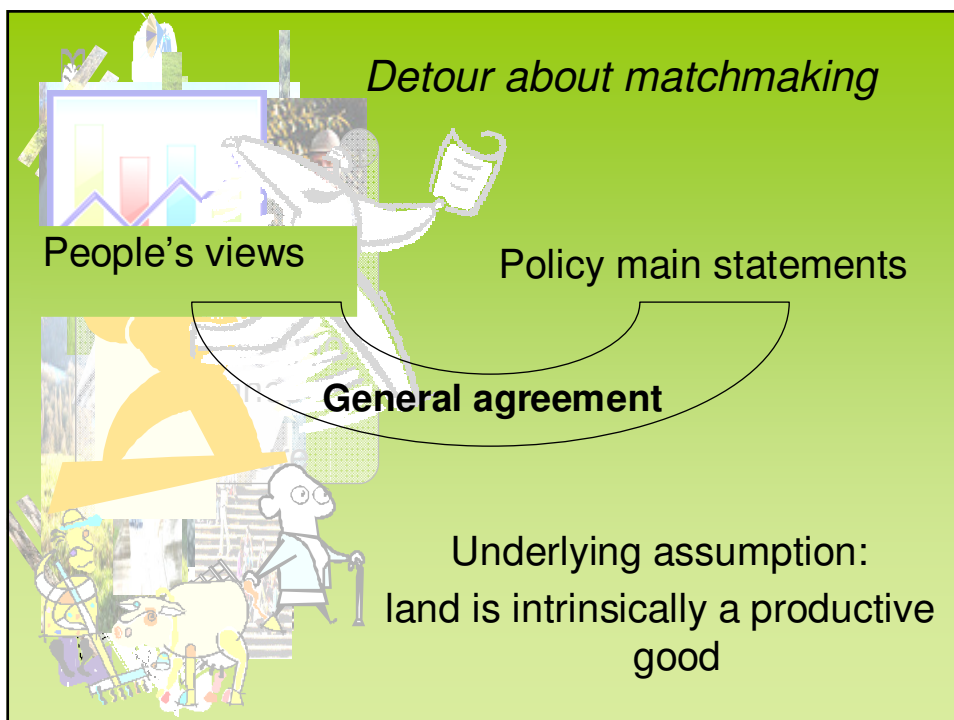
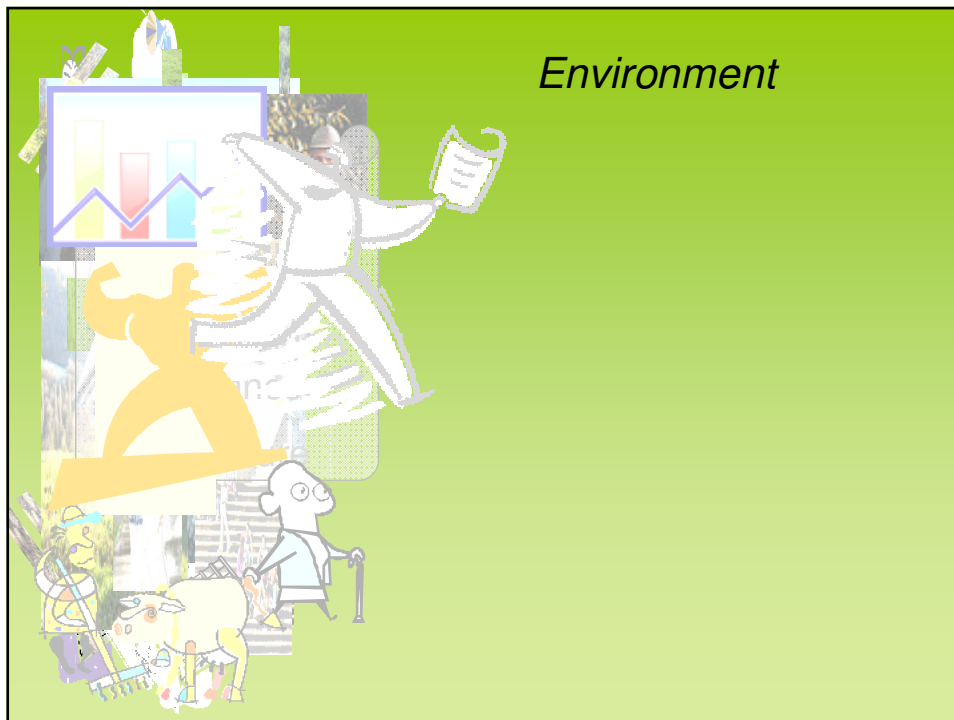


Human Factor

- Communication at local scale
- Agriculture in context

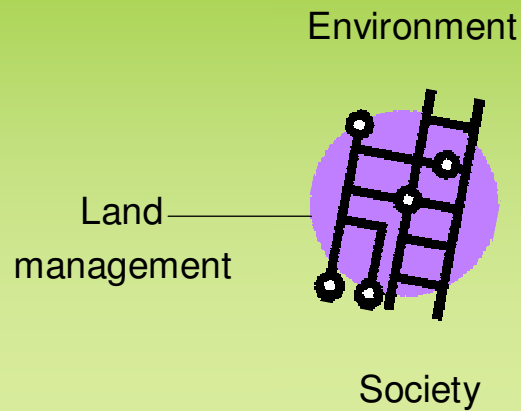
Again a
multidimensional
rural world

Integrating and moving
forwards
(future is not incompatible with
the past)



Environment

A challenge (reforming is more than matchmaking)



III. From particular to the general

Results —————> Asking questions

- How are we contributing – exactly – to the resilience and sustainability of rural communities?
- What did we learn?