

Workshop on Land Tenure and Land Consolidation

Land Development Project in Penamá



XUNTA DE GALICIA
CONSELLERÍA DO MEDIO RURAL



Cristina Zolle Fernández
T.A. Ministry of Rural Affairs of Galicia
Allariz, 11th of February 2009

Background information

PENAMÁ is a “Monte Veciñal en Man Común” = MVMC

Private Common Land”

this type of property represents about 600.000 ha in Galicia and it is characterised because its management and ownership belong to the people who lives in the parishes, not to the parish itself

erman law

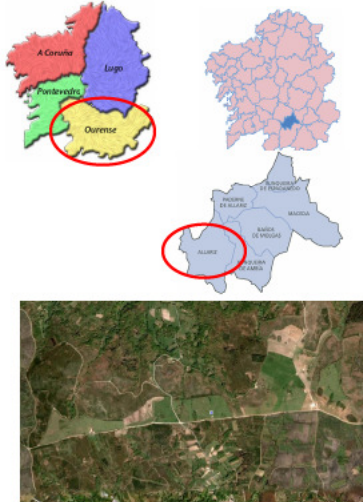
hey are protected by the Law 13/1989 about private common lands, according to this, the PCL:

-
-

an't be divided

he right of use them belong to the residents of the villages

Situation of the MVMC Penamá



- South of Allariz (Ourense)
- Area = 500 ha
- Altitude = 800-900 m (a.l.see)
- It belongs to the people who live in 3 parishes: (16 villages)
 - San Miguel de Torneiros
 - San Xoán de Seoane
 - San Martiño de Pazó
- N° of residents ≈ 230
- Biosphere Reserve



PAST

- In 1960s, about 220 ha were planted with pines and was managed by the public administration (by agreement)
- The rest of the area was divided in parcels and used as pastures, cereal production and for obtaining manure, ... these uses were progressively abandoned and in the 1990 there was no land under these uses



Past

- In 2001 the agreement about the pine plantation with the administration was cancelled by the initiative of the villagers and the pines were cut: 38.693 m3 of wood which generated 1.017.085 euros. This money was used in:
 - 85 % was used in public investments in the 16 villages of the 3 parishes which are the owners of the common land
 - 15 % was used to solve the problems of land abandonment and recovering a rational use of the land trough establishing a cattle farm



Objective

To recover the abandoned land trough development a farming use of the land under the principles of:

- Extensive and ecological management
 - Work
 - Animals adapted to the area



MontePenamá



Interventions developed: pasture land

- Different agriculture works were made in order to establish the pastureland
- A research project with the Agrarian Research Institute of Mabegondo (under the Ministry of Rural Affairs of Galicia) was developed in order to get the most adapted species and varieties for the pastureland
- Creation of pastureland

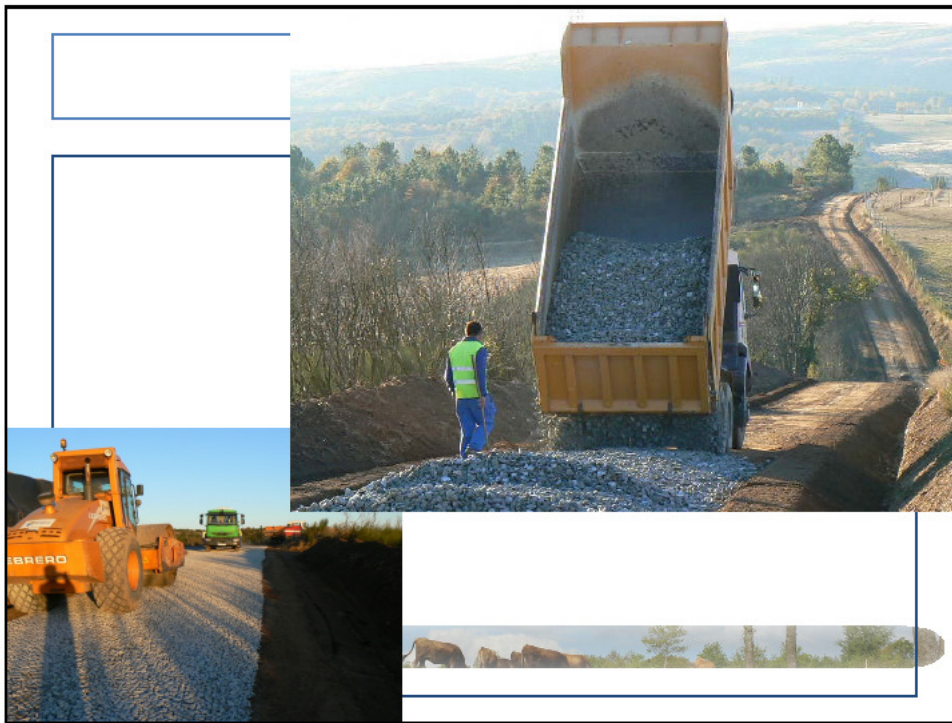


Interventions developed: infrastructures and buildings

- Building for warehouse
- Fences
- Roads
- Cattle guards/grids
- Shelters for the cows
- Sorting chutes
- Water supply works







Animals

It was needed a breed of cows adapted to the conditions of the area:

• Limia Breed:

- Autochthonous breed of the Limia Area (Ourense): used for work, meat and milk in the small family farms:
 - Strong and “noble”
- Although in 1960s there were thousand of animals, this breed was amazed in extinguishing: at the end of the 1990s there were only 70 cows
- There are public aids for the maintaining of animals of this breed







... more about the animals

- All the animals are inscribed in the “genealogical book” of this breed
- The reproduction of this animals is managed in order not to have “blood relationships”
- Animals are always in the “open space”, including reproduction
- Food: pastureland and hay (produced in the area)
- The fertility and birth rates are very high (1% of death animals)
- No cases of predator attacks



About the cattle association

- There has been created a cattle association in order to manage the farm
- It has an employee (part time)



MontePenamá

- The cattle association - Community (co-ownership of the private common land)
 - Leasing of the land according to the economic results of the association
 - Benefits are invested in the 16 villages to which belong the private common land and also
- ... In a FESTA / PARTY in the pastureland with food and music!



... And what about community members!

- They are very old!
- At the beginning they were afraid:
 - Of failure
 - That this could be a way through which the municipality or the administration could get their land
- But now, they are happy, they know the project, they can see the results in the use of the land: is not abandoned but also in their own villages (investments in the villages) ... and of course they enjoy a lot in the annual FESTA!



... why this project was developed?

- There was a person in the municipality which believe in the project and who promote it
- There were public administrations (Municipality and Galician Government) who also believe and support it
 - Municipality: doing a work of dinamyzation and economic support
 - Galician Government: economic support
 - Other associations: BOAGA (Authohtonous breed) and the Board of Ecological production in Galicia



The initial idea started in the municipality



www.montepenama.com



MontePenamá



Moitas Grazas pola vosa atención

Thank you very much for your attention!

