

Rural Development in Bavaria



A brief glimpse about the state of the art of Rural Development in Bavaria

Seite 2

Outline

1. General Information

- Some figures
- Organisational structure
- Human resources

2. Rural Development in Bavaria

- Basic Principles and Key Competence
- Tasks and Goals
- Implementation Instruments
- Integrated Rural Development
- Financing and Evaluation



Rural Development in Bavaria · 14th November 2012 · Thomas Gollwitzer





Federal Republic of Germany:

- Population ~ 82 Millions
- Area ~ 357 thou km²
- GDP 2011 ~ 2570.8 Billion Euro
- Farms ~ 299.000
- 16 States, each with its own land consolidation authority

Rural Development in Bavaria · 14th November 2012 · Thomas Gollwitzer

Bavaria in Figures:

- Population ~ 12.6 Mill.
 - Density of population ~ 179 per km²
 - Population in rural areas ~ 60%
- Area ~ 70.6 thou km²
 - Agricultural acreage ~ 49,4%
 - Wood ~ 35,0%
 - Traffic ~ 4,8%
 - Rural areas ~ 85%
- Farms ~ 93.700
- GDP 2011 ~ 446.4 Billion Euro
- Autonomous Communities ~ 2056

Rural Development in Bavaria · 14th November 2012 · Thomas Gollwitzer

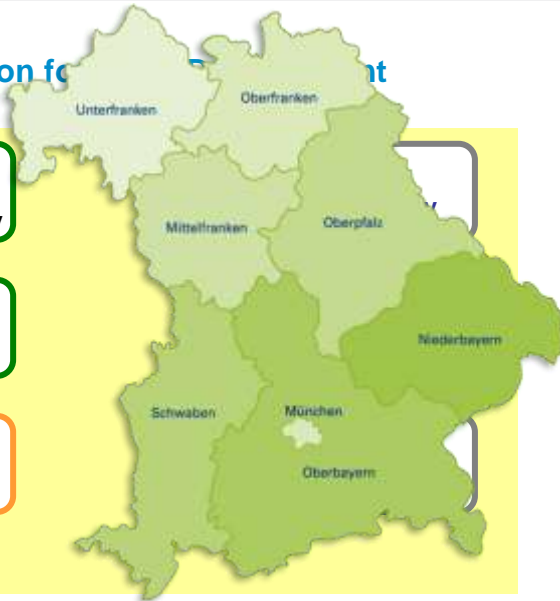
Bavarian Administration for Rural Development

**Bavarian Ministry
for Food,
Agriculture and Forestry**

**7 Offices
for Rural Development**

**Community
of Participants*
(public cooperation)**

*) temporary authority

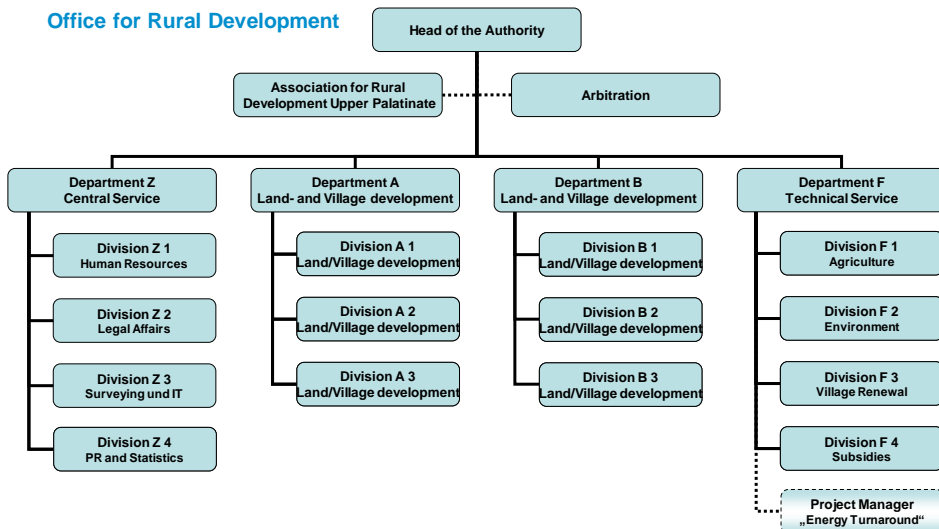


Rural Development in Bavaria · 14th November 2012 · Thomas Gollwitzer



Organigram

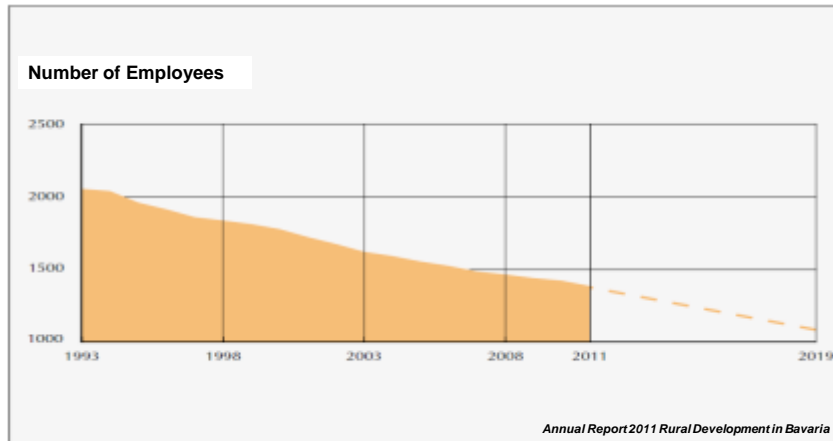
Office for Rural Development



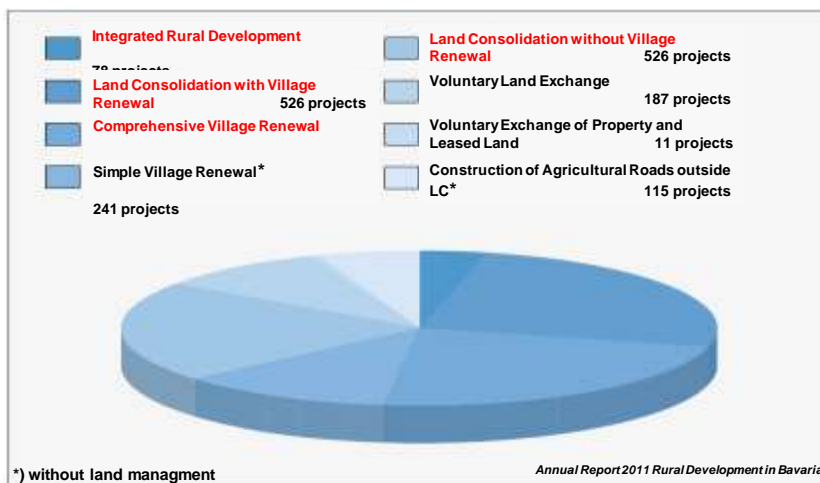
Rural Development in Bavaria · 14th November 2012 · Thomas Gollwitzer



Governmental Possibilities of Shaping the Future - Limited by Decreasing Human Resources



Current Projects of Rural Development in Bavaria



*) without land management



Outline

1. General Information

- Some figures
- Organisational structure
- Human resources

2. Rural Development in Bavaria

- Basic Principles and Key Competence
- Tasks and Goals
- Implementation Instruments
- Integrated Rural Development
- Financing and Evaluation



The Bavarian Way – the Key to Success

- **Bavarian cooperative principle – the community of participants as lived subsidiarity**
- **Citizen participation – the main focus is always on the citizens**
- **Land management – key competence of Rural Development Administration**



The Bavarian Way – Subsidiarity

Local Community of Participants

**The elected board is responsible
for the common affairs of all participants, e.g.**

- Planning, construction and maintenance of the common facilities (e.g. roads, plantings, ditches, water retentions, community centers, village shops, ...)
- Reshaping the land consolidation area
- All decisions concerning the reallocation of the land properties
- Places the orders for the constructional measures
- Decides about the cost distribution and the deduction of land for the common facilities
- Responsible for the evaluation of the land (basis for the reallocation)



The Bavarian Way – Subsidiarity

Local Community of Participants

**The elected board is responsible
for the common affairs of all participants, e.g.**

- Planning of the common facilities (e.g. roads, plantings, ditches, water retentions, community centers, village shops, ...)

Broad Citizen Participation



The Bavarian Way – Subsidiarity

Broad Citizen Participation

- Widespread information and involvement from the beginning to the end
- Basic knowhow learned in seminars at the School for Rural Development
- Forming voluntary working groups
- Drawing up a model and a preliminary measure plan by the citizens themselves



Rural Development in Bavaria · 14th November 2012 · Thomas Gollwitzer



Key Competence – Land Management



“Land management is the process by which the resources of land are put to good effect. It covers all activities concerned with the management of land as a resource both from an environmental and from an economic perspective. It can include farming, mineral extraction, property and estate management, and the physical planning of towns and the countryside.”

UN (1996): Land Administration Guideline



Rural Development in Bavaria · 14th November 2012 · Thomas Gollwitzer





* Bringing the economy and ecology into line through land management means making land available where it is needed.



* Community facilities, flood protection measures, sport, building land, road network or economical, social and ecological requests – rural development and land management solve land-use conflicts in villages and on the land and optimize the use of different instruments in rural areas.



* Land management measures are the pivotal point if national transport connections should increase the location quality and new solutions are required in communes for living, residing and working.



Rural Development in Bavaria · 14th November 2012 · Thomas Gollwitzer



„Continue the proven work and be open for new challenges“

Helmut Brunner, Bavarian Minister for Food, Agriculture and Forestry



„I regard my ministry as basic and shaping administration for our rural areas.

This is because we have the required instruments ... and the know how, the experience and the attendance in the rural areas.

The **Integrated Rural Development** to support alliances of communities and to boost common action approaches.

... **Leader** to support (county wide) regions.

... **Land Consolidation** to improve the competitiveness of our agriculture and to shape our cultural landscapes.

... **Village Renewal** to ensure that our villages remain as vital homeland and to boost a sustainable development. “

Allgäuer Bauernblatt 12/2008



Rural Development in Bavaria · 14th November 2012 · Thomas Gollwitzer



Basic Missions of Rural Development in Bavaria

- **Supporting agriculture and forestry**
- **Effectively strengthening communes and securing vital rural areas**
- **Protecting natural living foundations**
- **Implementing public plans (large scale projects) in a property friendly manner**

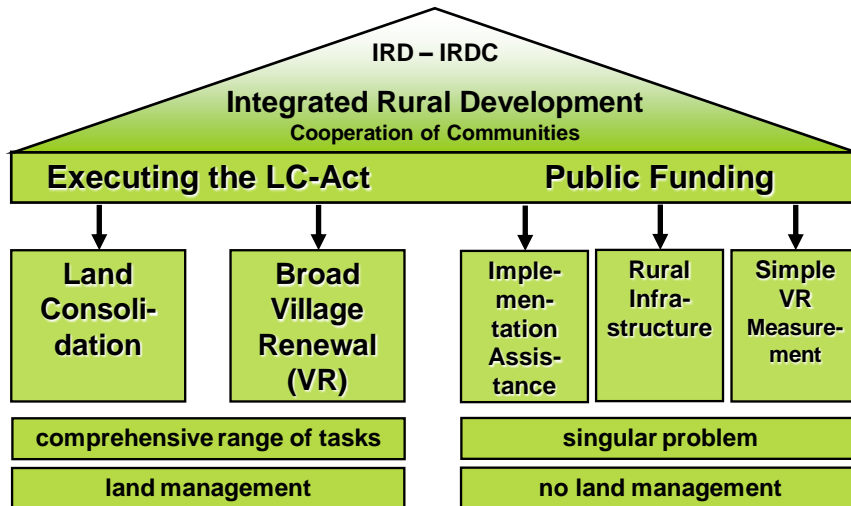


„New“ tasks of Rural Development in Bavaria

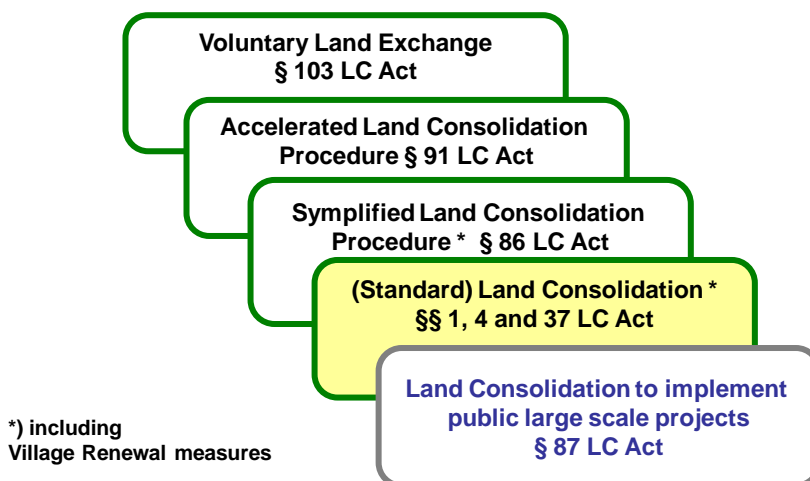
- > **Assistance to develop strategies (local and regional)**
 - **for handling of the demographic change ...**
 - **for declining the land consumption ...**
 - **for managing the energy turnaround**
 - **for handling climate change ...**
 - > **Initialise and attend cooperations (networks) of municipalities**
- ... and support the implementation**



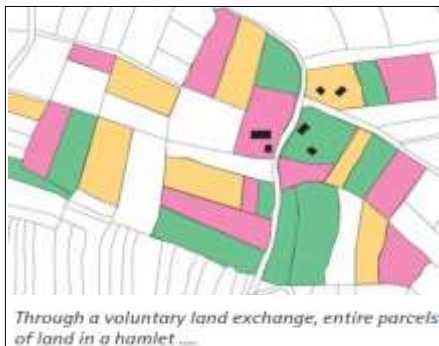
Implementation Instruments



Land Consolidation (LC) Procedures according the LC Act



Voluntary Land Exchange



Before ...

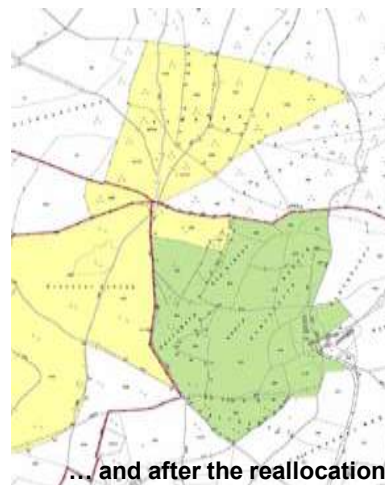
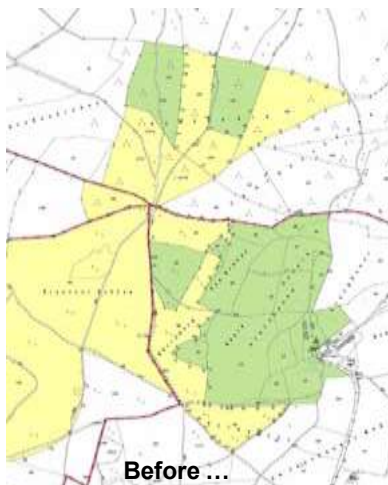
... and after the reallocation



Rural Development in Bavaria · 14th November 2012 · Thomas Gollwitzer



Voluntary Land Exchange in the wood

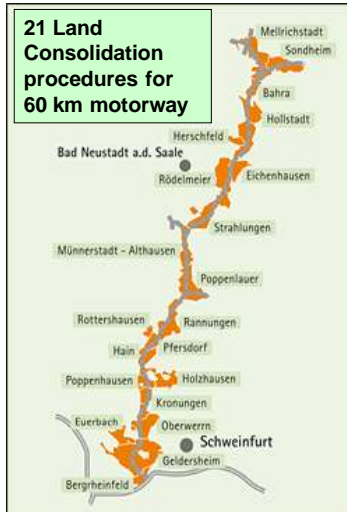


Rural Development in Bavaria · 14th November 2012 · Thomas Gollwitzer



Land Consolidation to implement public large scale projects

21 Land Consolidation procedures for 60 km motorway



... after the Land Consolidation

The large scale project is realized, the agricultural land is reorganized. Ecology and economy are balanced.



Rural Development in Bavaria · 14th November 2012 · Thomas Gollwitzer



Standard Land Consolidation Procedure

Comprehensive improvement of the living and working conditions by Rural Development:

- land reallocation
- new road network



Before ...



... after the land consolidation

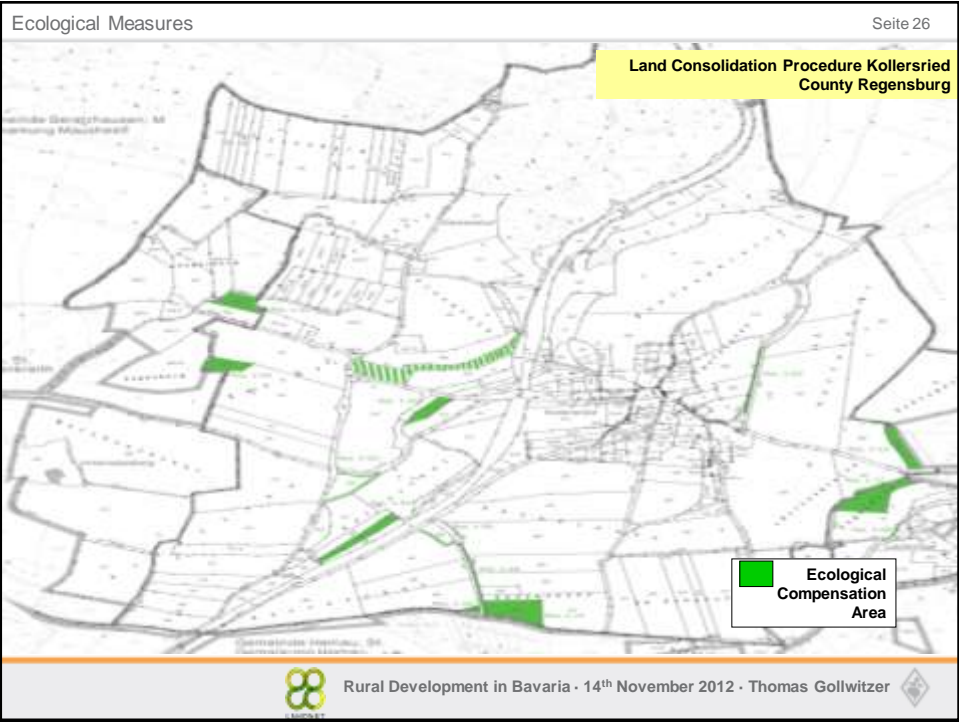
- village renewal
- water management / flood protection
- soil protection
- ecological measures

Strong Villages and Prospering Landscapes



Rural Development in Bavaria · 14th November 2012 · Thomas Gollwitzer





Village Renewal – Part of (every) Land Consolidation

The Bavarian Village Development Programme is intended for hamlets up to 2,000 inhabitants.

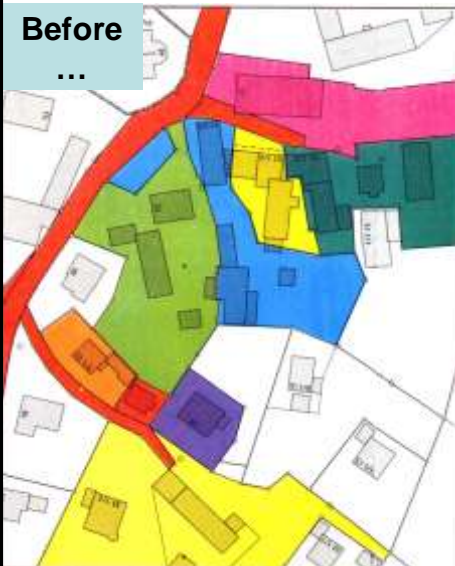
The goals are to:

- improve local conditions for agriculture
- boost the economic strength for rural areas
- enhance the surroundings of the local population (ecological and social)
- create a greater awareness of the village culture
- maintain the individual character of the village and the landscape
- improve the basic infrastructure and the local supply
- contribute to achieve the energy turn around
- help to alliviate the effects of the climate and demographic change
- promote the cooperation of municipalities



Before

...



Village Renewal – New Roads



A typical situation which can be found in thousands of Bavarian villages – suitable for traffic but narrow, no space for pedestrians or organized green spaces.



After Village Renewal, the road area offers a successful combination of traffic areas and living space for the people and nature suitable for the village. Clear lines and road boundary marking increase safety for all road users. In addition, green areas are also nicely incorporated



Rural Development in Bavaria · 14th November 2012 · Thomas Gollwitzer



Village Renewal – Renovated Houses and Places



◆ Left: rural development is working against the emptying of village centres by renovating and reusing empty buildings in the village and through a targeted internal intensification of the village core and village planning concepts, and by contributing towards sustainable land use. ◆ Right: After village renewal, the market square in Reisbach is once again a popular address and the shops are flourishing.



Rural Development in Bavaria · 14th November 2012 · Thomas Gollwitzer



Village Renewal – Agriculture – Basic Infrastructure



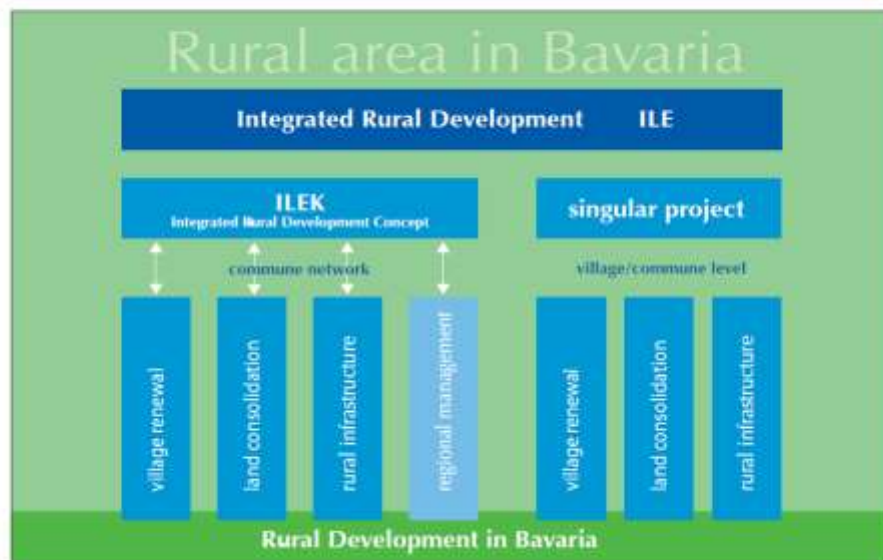
Creating back-road accesses – a benefit for farmers and village inhabitants. This enables the farmers, their business and farming areas to be approached without burdening the traffic in the village.



The idea of a village shop run autonomously by the village community. It has already been put into practice in 40 villages.



Rural Development in Bavaria · 14th November 2012 · Thomas Gollwitzer



Rural Development in Bavaria · 14th November 2012 · Thomas Gollwitzer

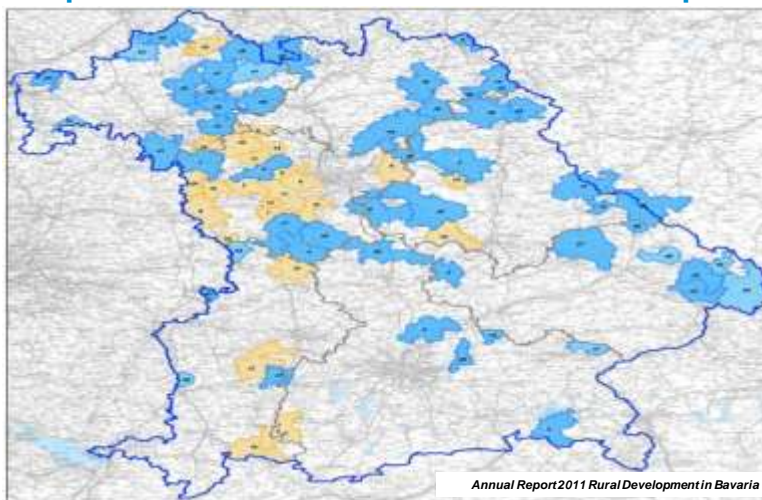


Cooperation of Communities – Why?

- **Global Challenges**
- **Similar Situations**
- **Narrow Financial Scopes of the Communities**
- **Synergy Effects**
- **(European) Political Order**



Cooperation of Communities in Rural Development



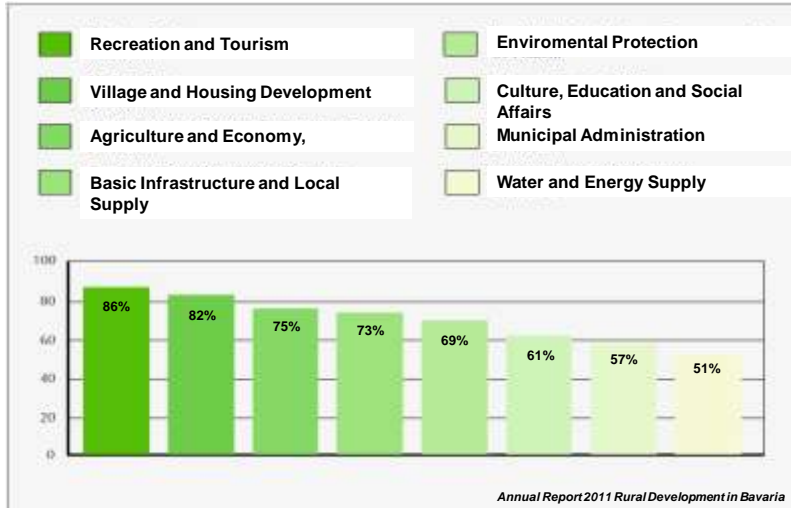
■ established in 2011

■ established between 2005 and 2010

■ established before 2005



Current Key Aspects in the Integrated Rural Development



Integrated Rural Development – the Road to Success



Outline

1. General Information

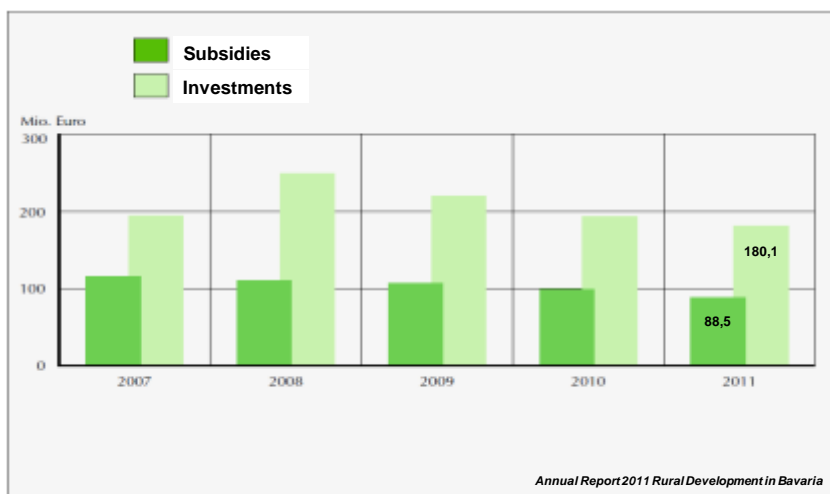
- Some figures
- Organisational structure
- Human resources

2. Rural Development in Bavaria

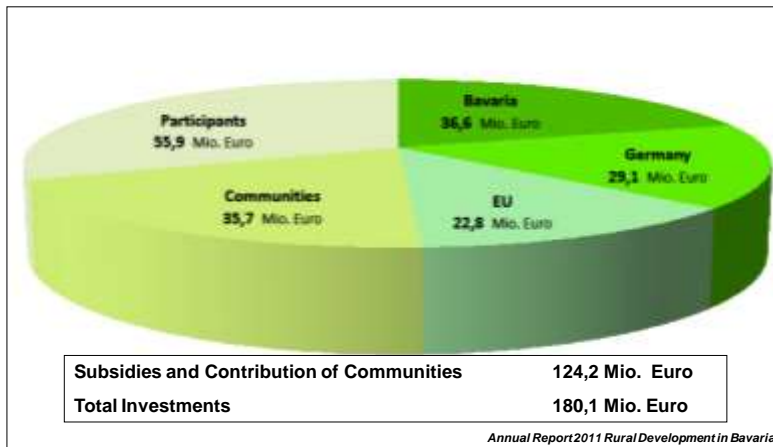
- Basic Principles and Key Competence
- Tasks and Goals
- Implementation Instruments
- Integrated Rural Development
- **Financing and Evaluation**



Investments and Subsidies – Rural Development in Bavaria



Financing 2011- Rural Development in Bavaria



by Integrated Rural Development

- **Land Consolidation**
- **Village Renewal**



Economic Effects through Rural Development

- Every Euro from subsidies in Village Renewal and Land Consolidation measures creates **follow-up investments** of up to seven Euro.
- Approximately **130 work places** depend directly and indirectly on each million Euro of public funding which flow into projects of rural development.
- Nearly two-thirds of subsidies used returns to the treasury, because of the above mentioned investments the **tax revenue** increases accordingly.



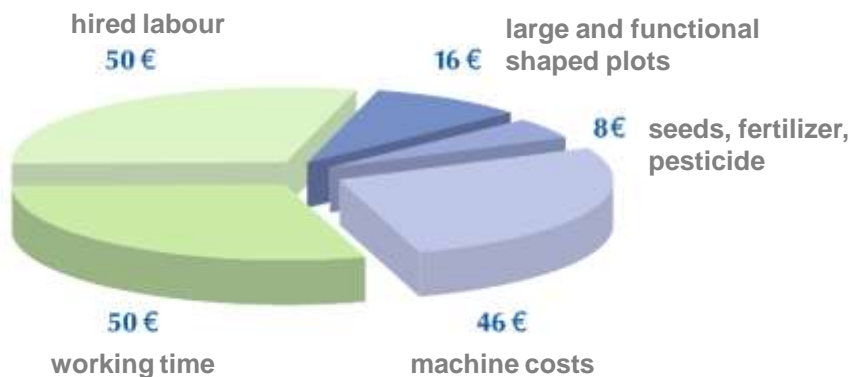
ifo Institute for Economic Research e.V.
at the University of Munich



Rural Development in Bavaria · 14th November 2012 · Thomas Gollwitzer



Reduction of Costs in Agriculture by Land Consolidation per Hectare and Year



In total the savings average 170 Euro per ha and year!



Rural Development in Bavaria · 14th November 2012 · Thomas Gollwitzer



„How great is the identification with your village after the Village Renewal?“

