



Government Service for Land and
Water Management
Ministry of Economic Affairs, Agriculture and
Innovation



4th International Workshop Budapest




12-15 November 2012

Willemien van Asselt, Governmental Service for Land and Water Management
(DLG)




LANDNET

4th International Workshop on Land Markets and Land Consolidation – Budapest, 12-15 November 2012




Government Service for Land and
Water Management
Ministry of Economic Affairs, Agriculture and
Innovation



Different approaches in LC

- Land consolidation 1.0 – for people
- Land consolidation 2.0: with people
- Land consolidation 3.0: by people



LANDNET

4th International Workshop on Land Markets and Land Consolidation – Budapest, 12-15 November 2012



Government Service for Land and Water Management
Ministry of Economic Affairs, Agriculture and Innovation

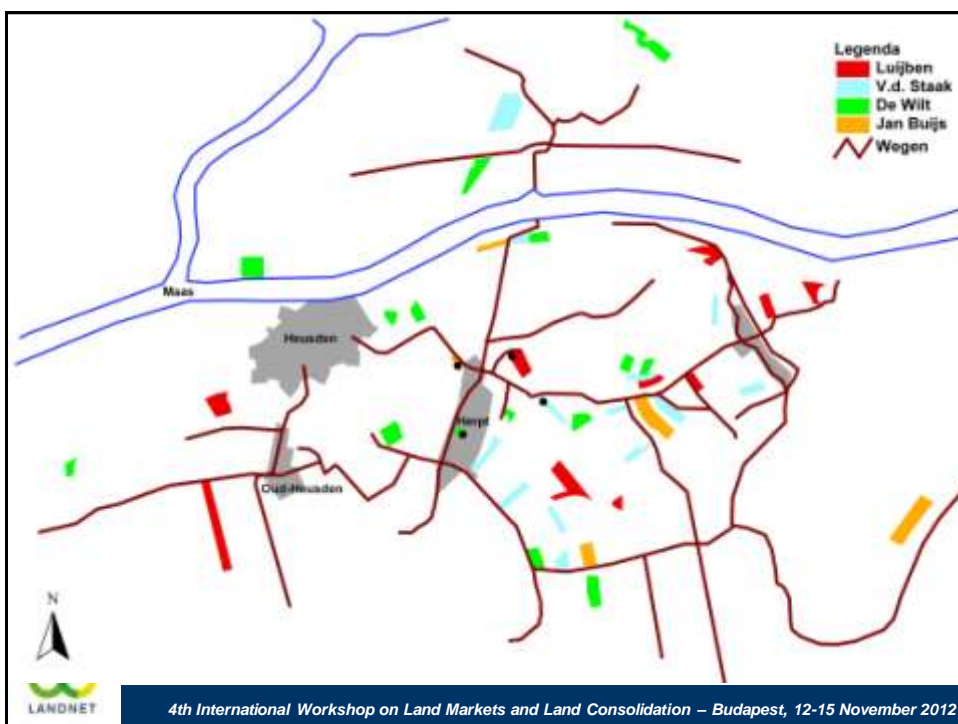


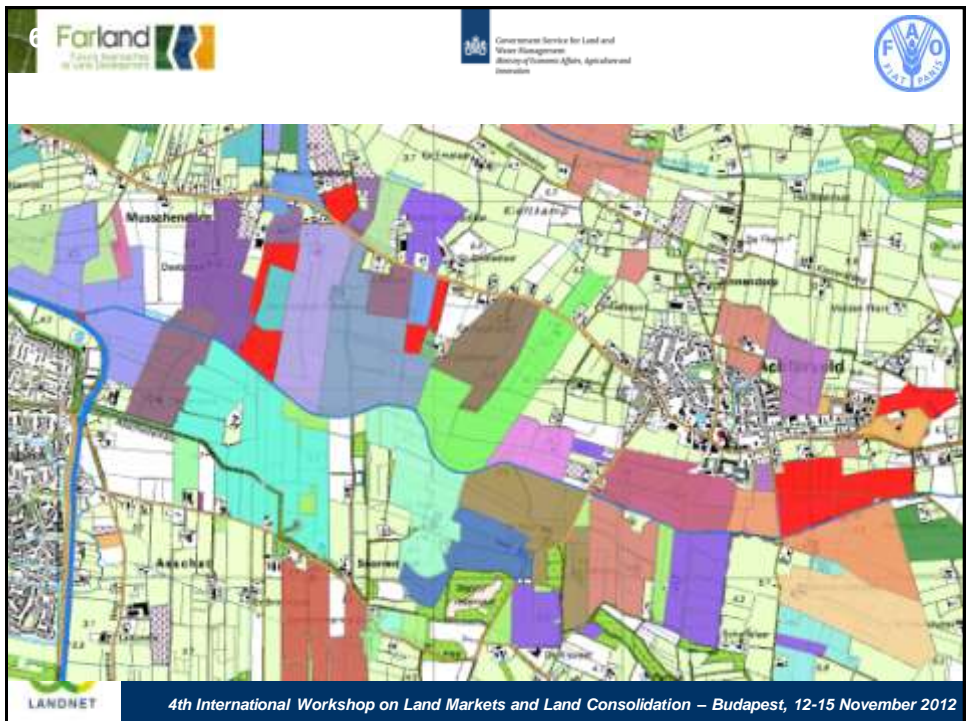
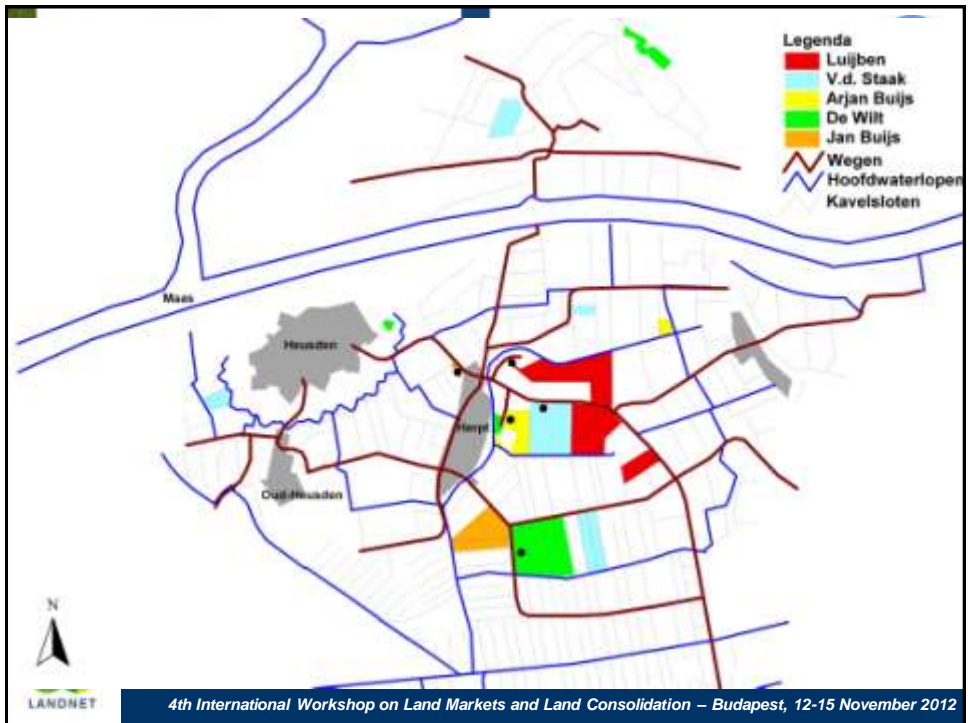
Land consolidation in NL

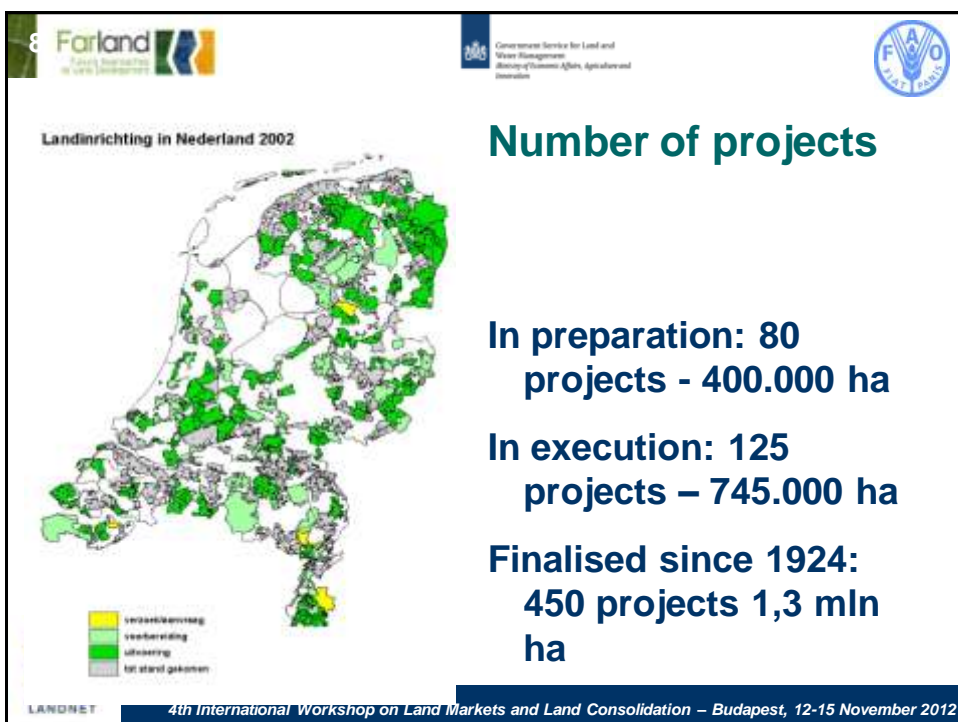
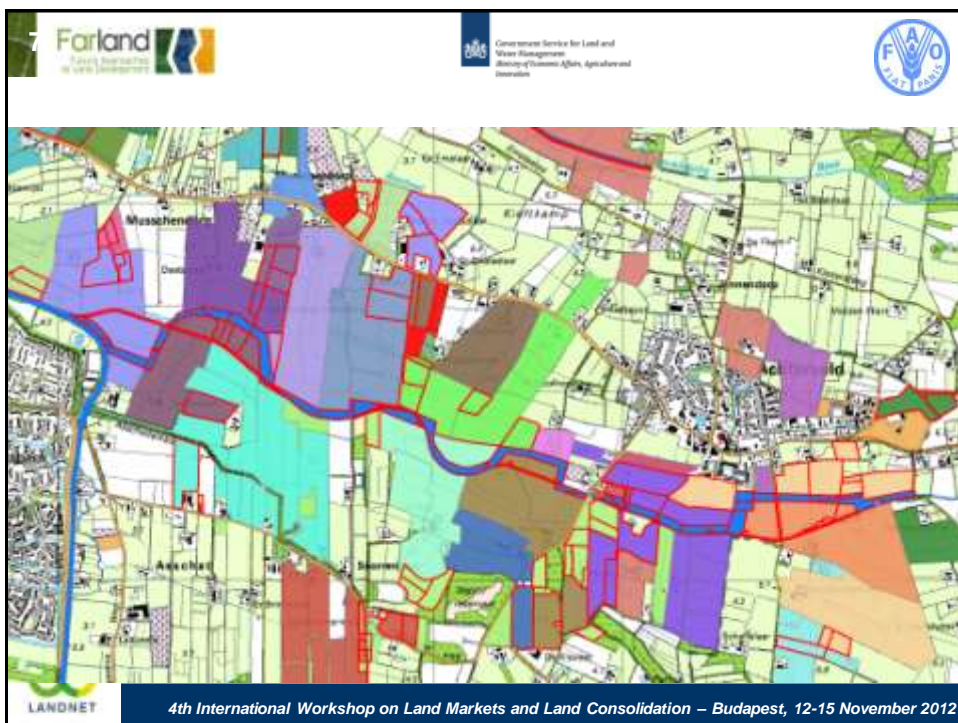
- Land consolidation 1.0- for people
 - Initiated by government
 - First simple agricultural project
 - Then more simple nature + water projects
 - Then integrale land consolidation, combining many functions



4th International Workshop on Land Markets and Land Consolidation – Budapest, 12-15 November 2012







- **Land consolidation 2.0: with people**

- **Not really different products but..**
- **From top down towards..**
- **Involving local stakeholders from beginning**
- **More sharing of information – transparent process**
- **A.o. inventing the Sketch Match method voor integrated area planning**



4th International Workshop on Land Markets and Land Consolidation – Budapest, 12-15 November 2012

Sketch and Match



4th International Workshop on Land Markets and Land Consolidation – Budapest, 12-15 November 2012

- **Intercom:**

- Invite non local people and experts from other regions to think with you about integrated area plan



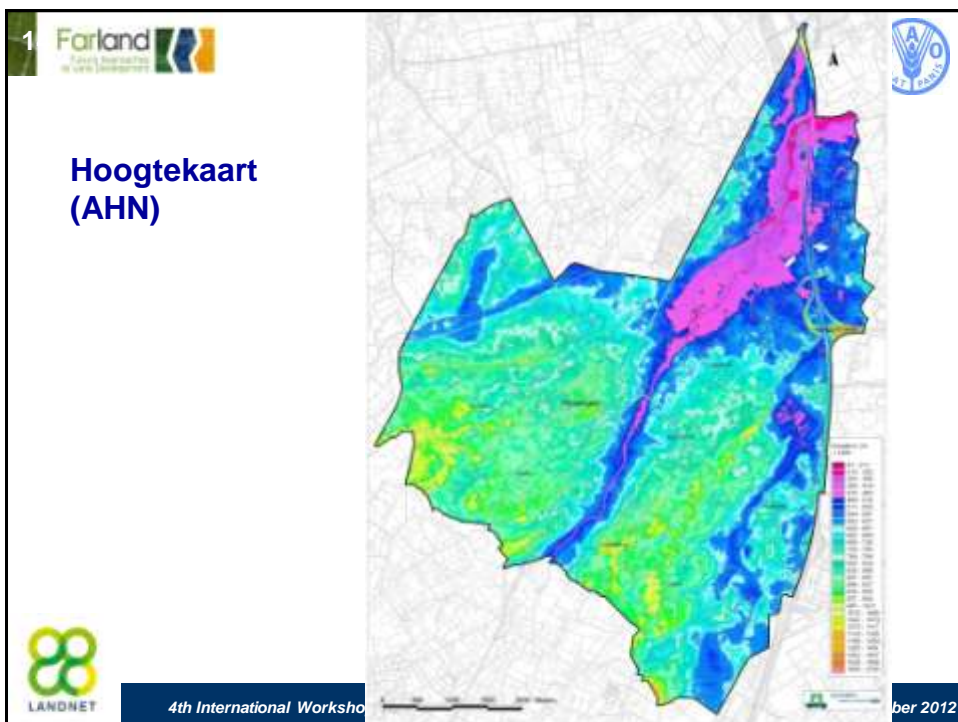
4th International Workshop on Land Markets and Land Consolidation – Budapest, 12-15 November 2012

Communication

- **Working with Websites for every bigger LC project**
 - LC plan presented
 - All maps and GIS data
 - Information about soil, water availability / drainage, history
 - Transparent procedure steps



4th International Workshop on Land Markets and Land Consolidation – Budapest, 12-15 November 2012



1

Challenges 21st century

- Anticipating
 - Climate change
 - Rising sea level
 - Subsidence of soil
 - Population growth
- Implementation of European policy
- Delta Plan
- Sufficient Energy for future

4th International Workshop on Land Markets and Land Consolidation – Budapest, 12-15 November 2012

1

Means more stakeholders


4th International Workshop on Land Markets and Land Consolidation – Budapest, 12-15 November 2012

1





Government Service for Land and
Water Management
Ministry of Economic Affairs, Agriculture and
Innovation



Farmers driving force rural area



PARTICULIER
NATHAN BEHEER



LANDNET

4th International Workshop on Land Markets and Land Consolidation – Budapest, 12-15 November 2012

1





Government Service for Land and
Water Management
Ministry of Economic Affairs, Agriculture and
Innovation






Land consolidation in NL

- Land consolidation and rural development 3.0: BY stakeholders
- More speed in implementation process is Needed
- Integrated area planning still very good but...
- Voluntary approach comes back
- Financing is more and more challenge
- More and more stakeholders involved
- Main idea however: best knowledge and experience is in brains of participants!




LANDNET

4th International Workshop on Land Markets and Land Consolidation – Budapest, 12-15 November 2012

1 **Farland**   

Government Service for Land and Water Management
Ministry of Economic Affairs, Agriculture and Innovation

Level of stake holder involvement make them Shareholders




Decide/ co- finance

Co produce

Advise

Consult

inform

 **LANDNET**

4th International Workshop on Land Markets and Land Consolidation – Budapest, 12-15 November 2012

2 **Farland**   

Government Service for Land and Water Management
Ministry of Economic Affairs, Agriculture and Innovation

Land consolidation in NL

- **TURBO voluntary LC**
 - 3 months of advices towards individual farmers and all institutes, churches, municipalities etc
 - Organise 1 evening for farmers, explaining the method and :” rules of the game””
 - Farmers decide: go/ no-go

 **LANDNET**

4th International Workshop on Land Markets and Land Consolidation – Budapest, 12-15 November 2012

Land consolidation in NL

- Tool: TURBO voluntary LC
 - Organise working session with 8-10 farmers
 - Give them maps and pencils
 - All farmers will indicate:
 - Red = keep parcel
 - Green = parcel can go to other farmers
 - Blue = parcels they like to have
 - only 1 day – draft LC is made!!!

Land consolidation in NL

- Tool: TURBO voluntary LC
 - Also complaints are arranged in workshop and solved
 - Land value and cost benefit by independent consultant
 - In total maximum of 1 year

2
Farland
FARMERS' ASSOCIATION OF THE NETHERLANDS

Government Service for Land and Water Management
Ministry of Economic Affairs, Agriculture and Innovation

FAO
F A O
F A O



LANDNET

4th International Workshop on Land Markets and Land Consolidation – Budapest, 12-15 November 2012

2
Farland
FARMERS' ASSOCIATION OF THE NETHERLANDS

Government Service for Land and Water Management
Ministry of Economic Affairs, Agriculture and Innovation

FAO
F A O
F A O

Regional financial fund

- Share between some municipalities
- For rural development goals
- Money from:
 - From every house 10 Euro
 - Money for nature conservation
- Payment for advisory services in LC
- Payment for works to parcels like irrigation
- But... also payment for RD

LANDNET

4th International Workshop on Land Markets and Land Consolidation – Budapest, 12-15 November 2012

Workshop

- How to reach political support for LC?
Your ideas, please!
- How to create public support while
introducing / implementing LC? What
concrete steps / actions?

Thank you!