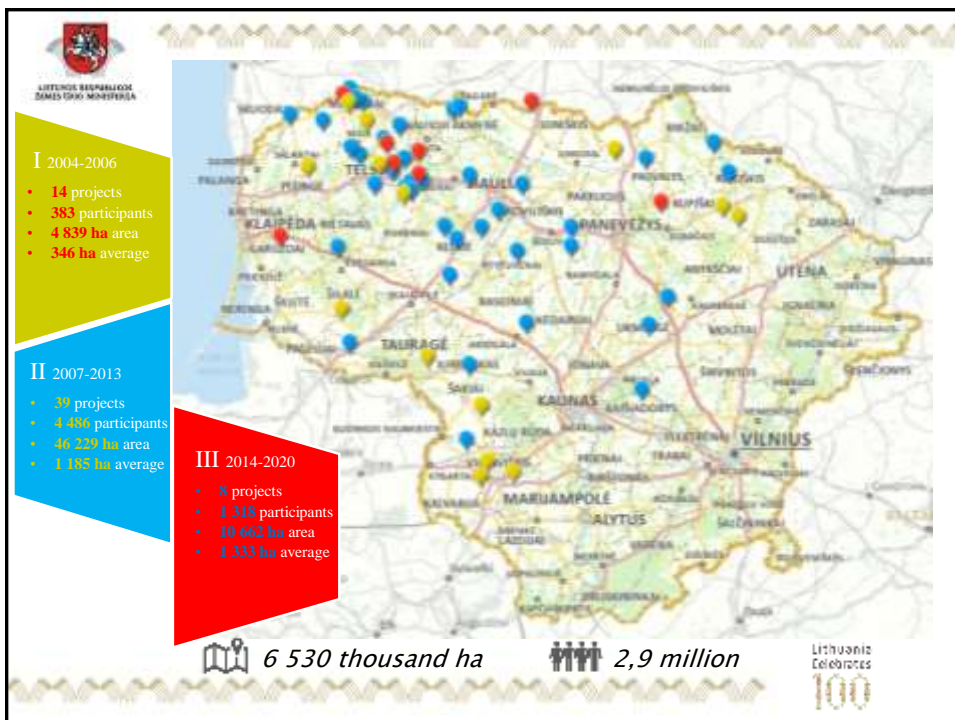
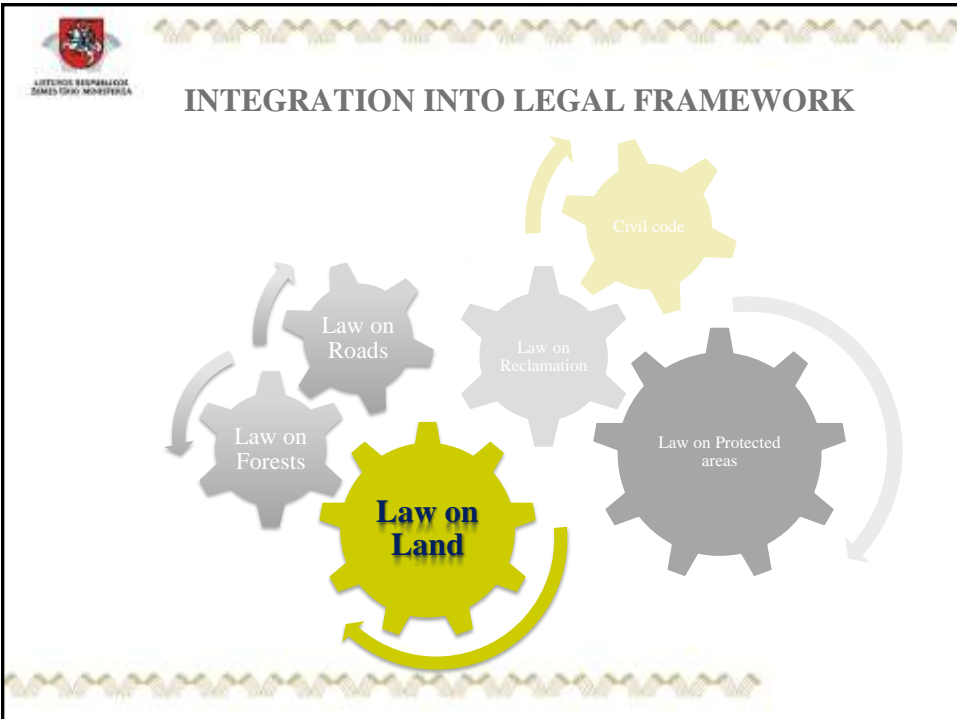
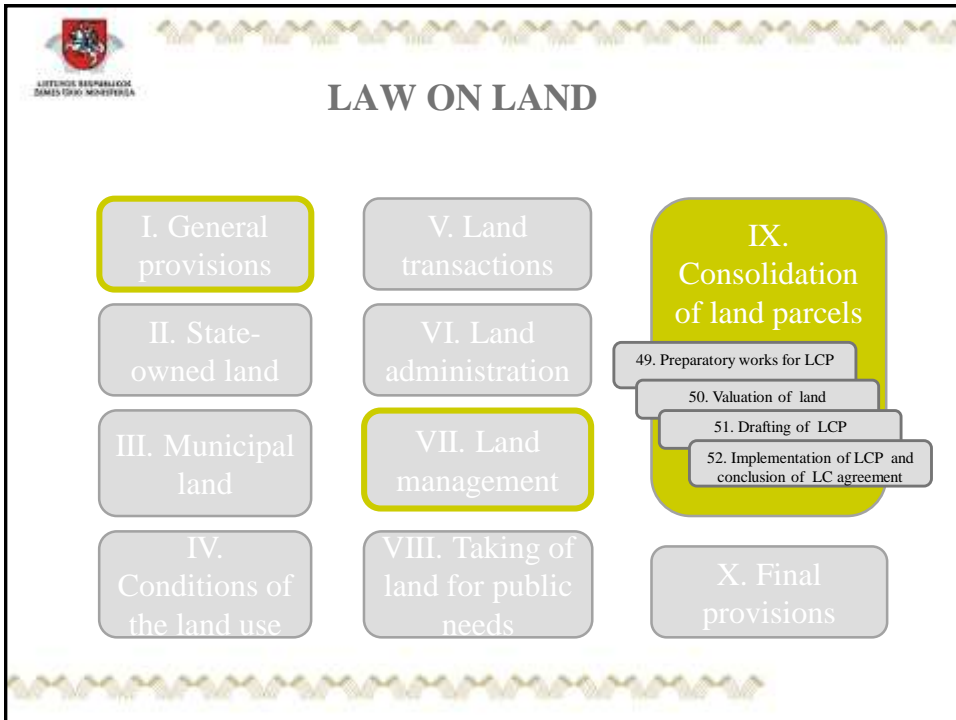


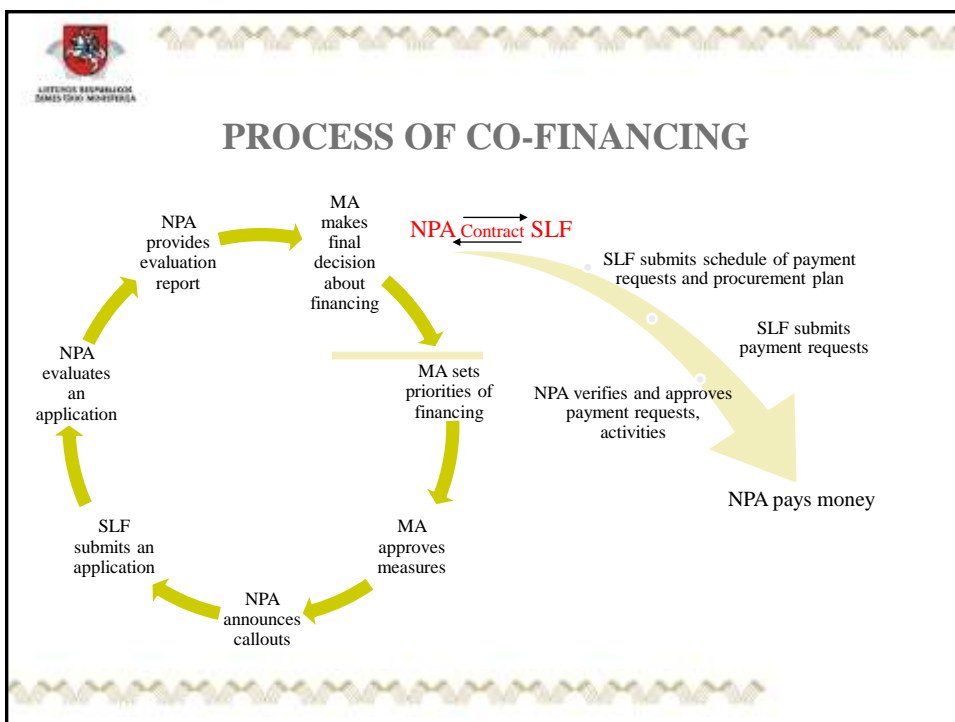
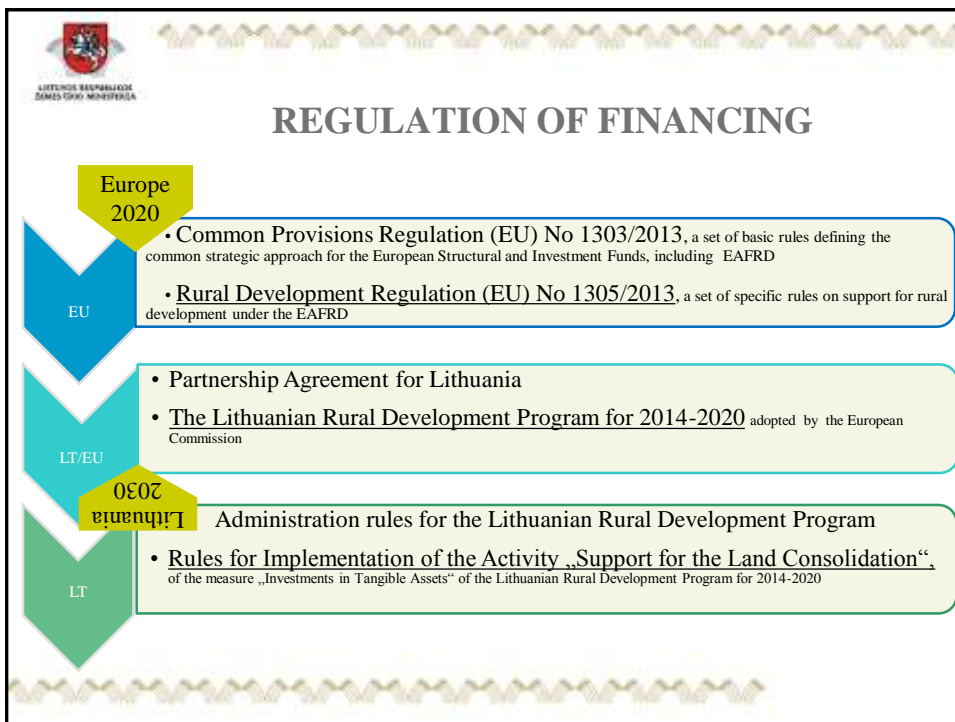
REGULATION OF LAND CONSOLIDATION IN THE REPUBLIC OF LITHUANIA

4.3











FINANCING

Eligible costs

- Organization, preparation and implementation of land consolidation projects
Including preparation of land valuation plan, publicity measures, registration of land parcels, general expenditure etc.
- Arrangement of public area and public infrastructure

Applicant

- State Land Fund

The biggest amount of support

- for one LC project - 400 thousand EUR
- for 1 ha – 347,54 EUR*

* not including arrangement of public area and public infrastructure



ENSURING MULTI-PURPOSE NATURE

Organizational requirements

Objectives of LCP

create necessary rural infrastructure
establish land use limitations
improve the resources of recreational and rural tourism
implement other objectives of agricultural, rural development and environmental protection

Invitees-representatives of

municipality
local action group
rural community
forest enterprise

Formulates the requirements

Direction of Preserved Territory
Department of Cultural Heritage
Road Administration
Geology Survey
State Forest Service

Co-financing requirements

Prerequisite

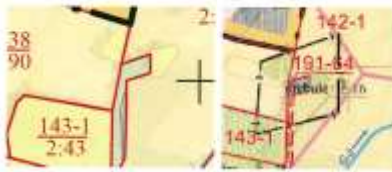
At least 20 % of payments – for arrangement of public area and public infrastructure

Prioritization criteria

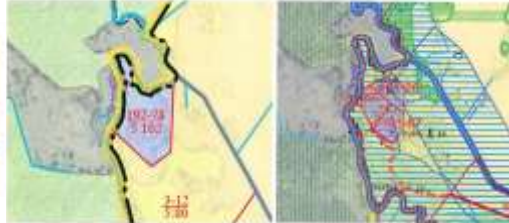
Implementation of objectives and tasks of the environmental protection
Formation of areas for public needs



Examples



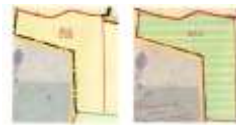
planned graveyard



planned mineral resource quarry, fixed easement



planned park, school stadium, fixed easement



planned a forestation



Thank you
for your attention