

Trends in spatial planning



kadaster

Digital support tools

A word cloud featuring various terms related to digital support tools, including:

- Bidirectional
- Stakeholders
- Data
- Owners
- Online
- Maps
- Information
- Participation
- Development
- Digital
- Mapping
- Interoperable
- People
- Communication
- Location
- Land
- Tenants
- Parcels
- Government
- Geo-information
- Interactive
- GISApps

kadaster

We all want.....



Analogue - Digital

Analogue	Digital
Paper	24/7
Known	Fast
Personal contact	Device-based
Location-based	Anywhere accessible (with internet)
Trusted (stamp & sealed)	Easy
Customised	Customised

Differences depend on design of digital and analogue processes

Discussion digital transformation

Often heard remarks:

- Fear of leaving people behind, due to
 - Lack of digital knowledge
 - Illiteracy
 - Less personal service
- Privacy
 - Can we publish all the data to everybody involved?
- Safety
 - Unauthorised access to data
 - High standards for government
- Performance
 - Failure of system
 - Out of service / no wifi
 - Slow



kadaster

But what about analogue situation?



Right holder lives here

Land Consolidation project area

kadaster

Tools for development of spatial policies



kadaster

Tools for development of spatial policies

Story Map



Maptionnaire



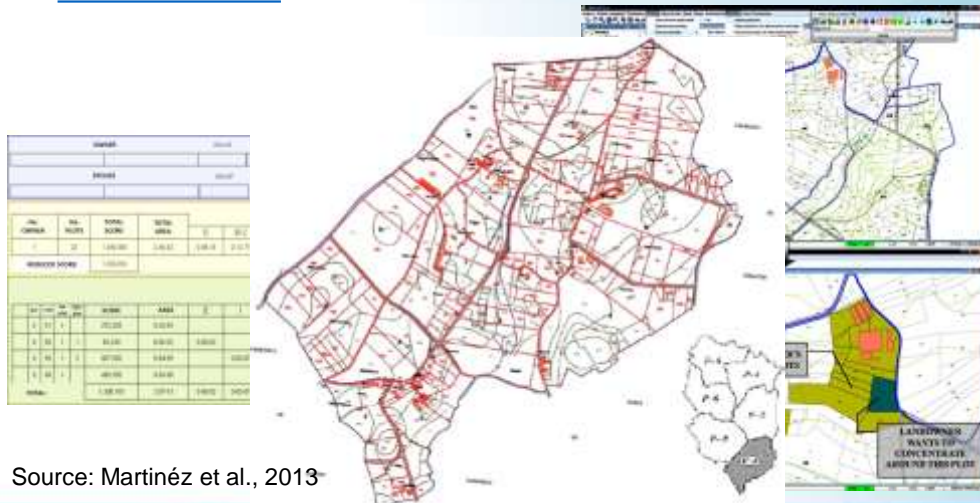
Juxtapose



kadaster

Tools for Land Consolidation (Spain)

Semi-automatic land consolidation software with GIS:

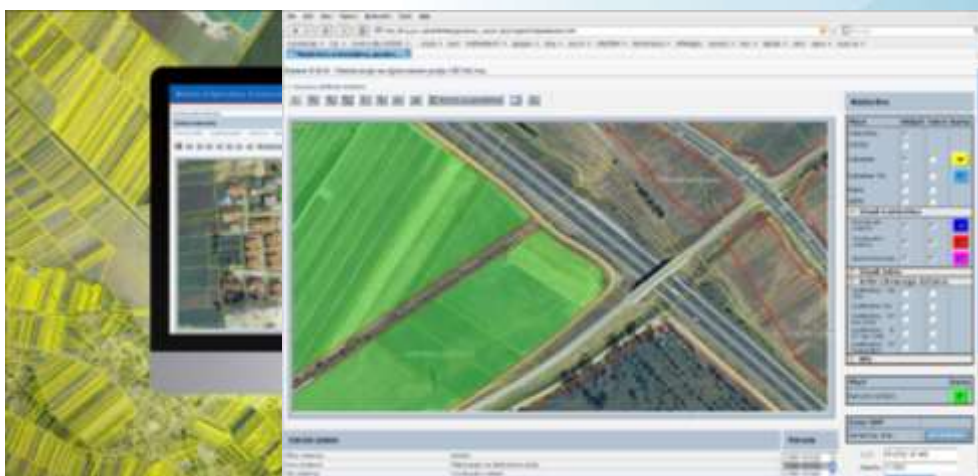


Source: Martín et al., 2013

kadaster

Tools for Land Consolidation (Slovenia)

Sinergise – Land Consolidation tool in Slovenia



kadaster

Tools for Land Consolidation (Turkey)

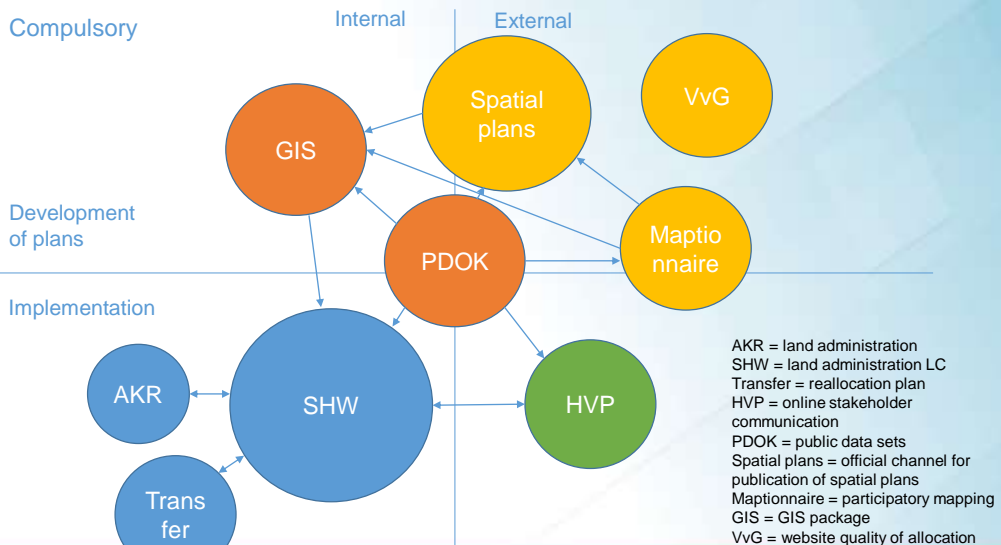
- Reallocation model based on wishes landowners



Source: Aslan et al., 2018

kadaster

Tools for Land Consolidation (Netherlands)

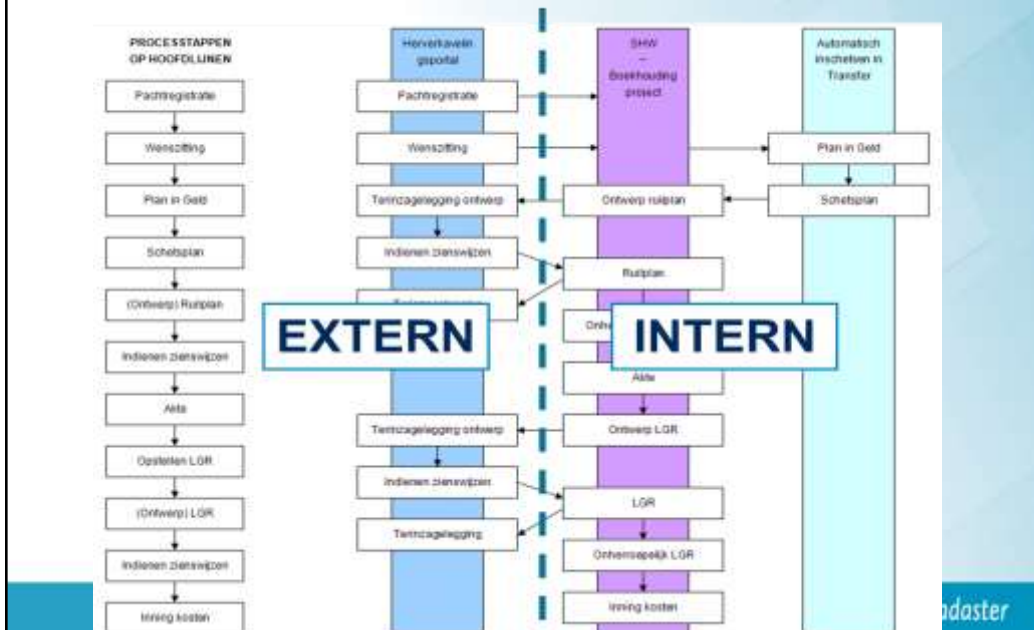


kadaster

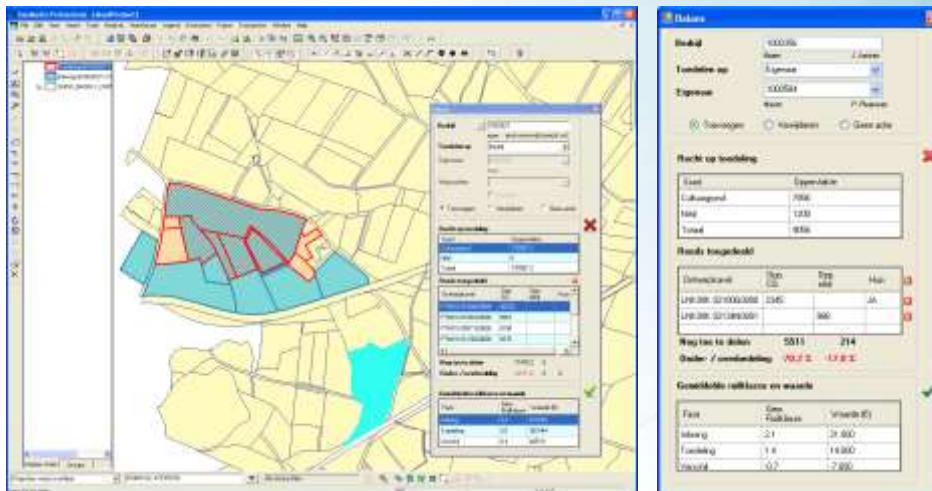
VvG – quality of allocation & reduced costs



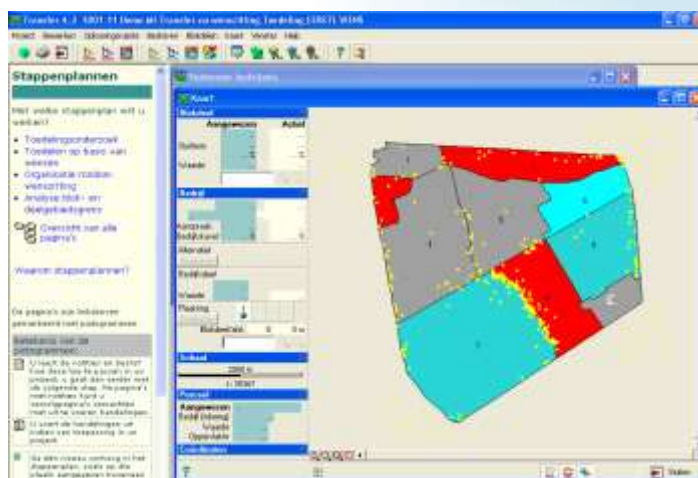
Overview of tools irt land consolidation process



SHW – land administration system LC

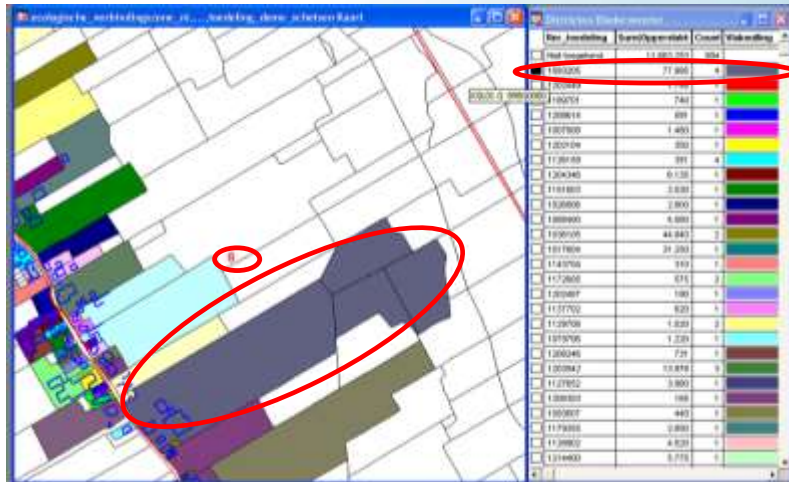


Transfer – semi-automatically reallocation



Red: over-asked
Blue: under-asked
Grey: balance

Transfer – semi-automatically reallocation



kadaster

HVP – online stakeholder communication

Wensregistratie

Alternatief 1: Wens per p

Ruimtelijk

Onderwerp ruimtelijk

Inclusieve zienswijze Ruimtelijk

Zienwijze

Bijlagen

Bedrijf adviseur

Naam adviseur

Adres adviseur

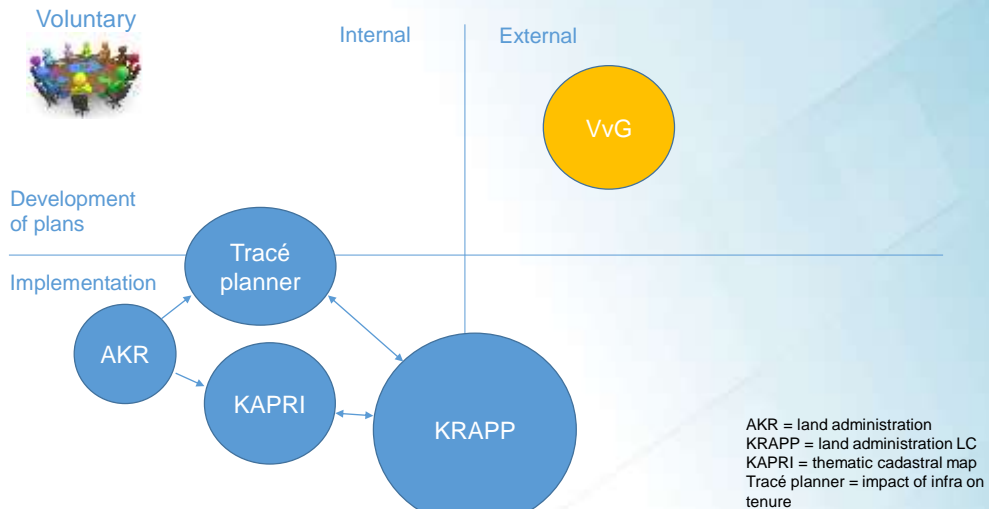
Postcode en plaats adviseur

Parcel

Oppervlakte

kadaster

Tools for Land Consolidation (Netherlands)

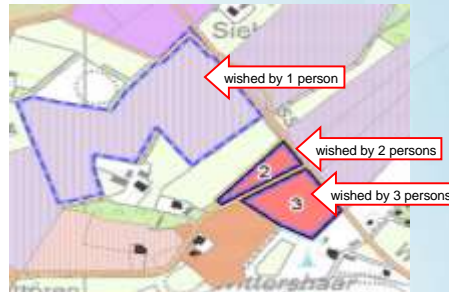
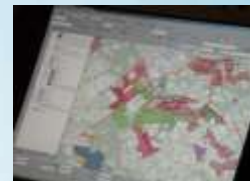


kadaster



KRAPP – land administration LC

Red = not exchangeable
Green = exchangeable



kadaster



KRAPP – land administration LC

Participants		Owned Parcels		Allocated Parcels		Financial arrangements	
DE BELTS BESNO WAFENVELD							
MATER, (DE HJ.)							
ZWOLSEWEG 11 BESNO WAFENVELD							
GERMENE HEERDE							
MARKTSTAD BESNO WAFENVELD							

kadaster

Design principles

- Keep it (super) simple
 - Limited amount of functionality per tool
 - Clear aim – what should it do?
- Who is the end user?
 - Experienced - grassroots
- Intuitive design interface
 - Guide user through steps
 - Colours
- Process over technology
- Interoperability between systems

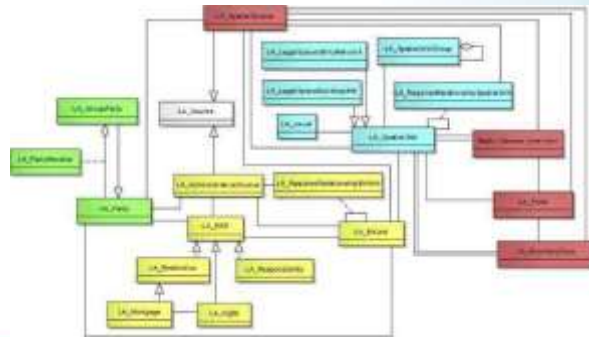


kadaster

Discussion

Challenge:

Is it possible to design a generic LC support system or set of systems?



Source: Lemmen et al., 2015

kadaster

Concluding remarks

- Several countries have up and running systems
- Technical possibilities improve year after year
- How to increase service to stakeholders (end users + employees)?
 - Leave no one behind
 - Usability
 - Ease of use
 - Personal contact
- Evaluation of current systems

kadaster

