

## Domestic Pig Population

Type of farming	Fattening pigs	Breeding sows	
Industrial/commercial farms	83.450 (FBiH) + 464.550 (RS)	9550 (FBiH) + 66.450 (RS)	
- Large commercial farms (>1000)			
- Small commercial farms (<1000)			
- Family farms (<100)			
Backyard farms			
Extensive farms (fenced)			
Farms with free ranging /scavenging pigs			

- **Pig holding density map**
- **Pig data available for different production systems available? At what admin level?**
- **Backyard practices: YES**
- **Pigs / pig products exported: Y/N – Serbia**
- **Pig / pig products imported: Y/N – Germany, Denmark, Spain, Hungary, Slovakia, Poland, Croatia, Serbia**

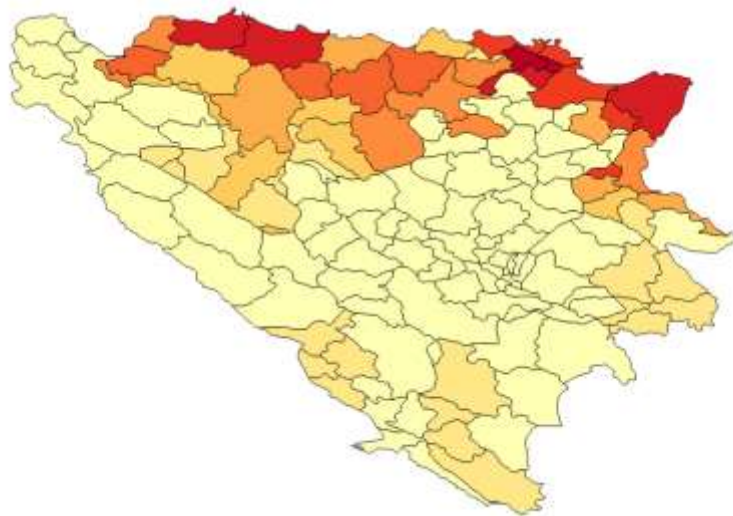
## Pig density map on entity level

- Federation of B&H
- Area (51% of total)
  - Pig population (15% of total)



- Republika Srpska
- Area (49% of total)
  - Pig population (85% of total)

## Pig density map



## Wild boar Population

- Wild boar density or numbers: **cca 20.000 wild boars**
- Import/Export of wild boar / wild boar products: **Last three years no such import or export**

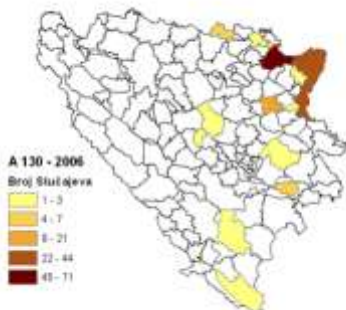
## Hunting associations

- In Bosnia and Herzegovina there are 4 hunting unions divided by territory, and all hunting organisations are members of one of those unions:
- Unions are:
  - Union of hunting organisations of Bosnia and Herzegovina
  - Hunting union of Republika Srpska
  - Hunting union of Herceg-Bosna
  - Hunting union of Tuzla Canton

# Data and risk assessment

- Database and information system. Please describe:
  - Pig identification system?
    - Curently there is no centralised database for pigs, although legal framework is established. Now pig databases are on entity levels.
  - Movement records?
  - Slaughter practices?
    - Registered slaughterhouses and backyard slaughter for personal use
- Wild boar management:
  - Hunting strategies? Y/N (which)
  - Hunting season:
    - Boars (all year)
    - Sows and piglets (1 August – 1 December)

## Risk assessment – Do you expect ASF to enter your country?



Classical swine fever in 2006

- Risk assessment has not been conducted but veterinary services of Bosnia and Herzegovina are following OIE and EC recommendations
- In order to prevent introduction of ASF, Veterinary Office of B&H is issuing Decision to ban import of pigs and pig products from affected regions and countries.

## Laboratory diagnostics

- In Bosnia and Herzegovina two laboratories are responsible for diagnostics of ASF:
  - Veterinary Institute of Republika Srpska in Banja Luka
  - Veterinary Faculty in Sarajevo



## Diagnostic capacity

Assay	Available	Not available	Testing possible at any time (24/7)	Max capacity of sample testing/day
PCR Gel based	YES (VF only)		YES	10 (VF)
PCR Real-time	YES		YES	90 (VB) + 30 (VF)
Virus isolation	YES (VF only)		YES	30-40 (VF)
Serology	YES		YES	300 (VB) + 50-100 (VF)
Lateral flow				

# Surveillance for ASF in peace time

Measure	Applied (tick all those answers that apply)			Not applied
Surveillance programme in place	In at-risk areas	All country		
Clinical surveillance	Active (# of samples) <b>73 (VF)</b>	Passive (# of samples) <b>1 (VB)</b>		
Virological surveillance (PCR, Ag) Serosurveillance (Ab)	# of samples <b>All conducted tests were PCR, Ag</b>			
Wild boar surveillance	Testing dead wild boar	Testing hunted wild boar	Testing dead wild boar in traffic incidents	

# Planned ASF outbreak response

Measure	Applied (tick all those answers that apply)			Not applied
Contingency plan for ASF available	YES (general contingency plan) + Rulebook on measures to control ASF („Official gazette of B&H“, No 15/11)			
Surveillance plan for ASF available	NO			
Cleaning and disinfection	YES			
Stamping-out policy	All animals in affected farm plus a pre-defined perimeter around of x km	All animals in affected farm plus neighbouring farms	<b>Only affected farms</b>	
Disposal of carcasses	<b>On site</b>	<b>Outside</b>	Into a plant	
	<b>Burning</b>	<b>Burial</b>	Rendering	
Wild boar carcasses finding	Active search	Reports with economic incentive	Reports without economic incentive	
Wild boar carcasses removal	Burial on site	Burning on site	Transport to collection sites	
Testing wild boar	Hunted (# of samples)	Dead (# of samples)	Dead in traffic incidents (# of samples)	
Compensation	Market value	Under market value	Over market value	
	<b>All culled animals (dead and alive)</b>	Only animals that were alive at the time of culling	Not for farms with biosecurity breaches (i.e. which broke the law)	

## ASF awareness campaigns

Awareness campaigns targeted to:	Y/N	Start date	Mean (leaflet, radio, poster, etc)	Comments
Official vets	Y			Leaflets and posters are in preparation phase
Private vets	Y			Leaflets and posters are in preparation phase
Commercial farmers	Y			Leaflets and posters are in preparation phase
Small backyard farmers	Y			Leaflets and posters are in preparation phase
Traders / Middlemen				
Transporters				
Hunters	Y			Leaflets and posters are in preparation phase
Forestry services/rangers	Y			Leaflets and posters are in preparation phase
Others entering the forest (hikers, mushroom pickers...)				
Others?				Leaflets and posters are in preparation phase also for customs and border services

## ASF challenges, gaps and needs (regulatory, training, equipment, other)

- Establishing of central database for domestic pigs (planned for 2020)
- Increase awareness of ASF to hunters and wildlife related personnel
- Bosnia and Herzegovina doesn't have rendering plant!
- Provide enough material and equipment for outbreak management
- Establish close collaboration between hunters and veterinarians (use example of rabies experience)
- Movement of wild boar carcasses for long distances
- Increase biosecurity in farms
- Ongoing vaccination against classical swine fever?!



Thank you for your attention

