

# VIII/I - North and Central Asia



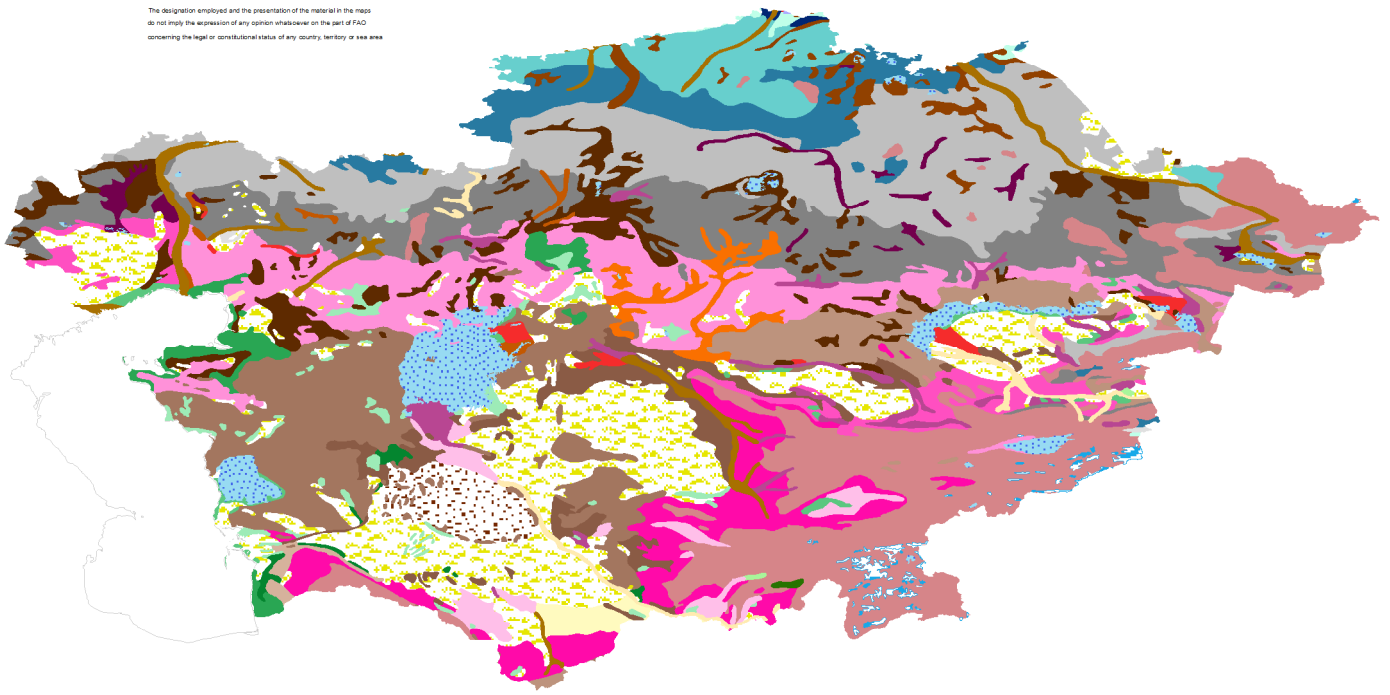
SOIL MAP OF THE WORLD - CENTRAL ASIA

SEL

IC/1982

Food and Agriculture Organization of the United Nations  
All Rights Reserved Worldwide

The designation employed and the presentation of the material in the map do not imply the expression of any opinion whatsoever on the part of FAO concerning the legal or constitutional status of any country, territory or sea area



0 287,5 575 1.150 Kilometers

## Legend

Bc- Chromic Cambisols	Gm- Mollic Gleysols	Mo- Orthic Greyzems	Xh- Haplic Xerosols	Zo- Orthic Solonchaks
Bk- Calcic Cambisols	I- Lithosols	Oe- Eutric Histosol	Xk- Calcic Xerosols	Zt- Takyric Solonchaks
C- CHERNOZEMS	Jc- Calcic Fluvisols	Qc- Cambic Arenosols	Y- YERMOSOLS	Water bodies (WA)
Ch- Haplic Chernozems	Je- Eutric Fluvisols	S- SOLONETZ	Yh- Haplic Yermosols	Glaciers (GL)
Ck- Calcic Chernozems	K- KASTANOZEMS	Sg- Gleyic Solonetz	Yk- Calcic Yermosols	Rock debris (RK)
Cl- Luvic Chernozems	Kh- Haplic Kastanozems	Sm- Mollic Solonetz	Yt- Takyric Yermosols	Dunes/ Shifting sand (DS)
Gc- Calcic Gleysols	Kk- Calcic Kastanozems	So- Orthic Solonetz	Z- SOLONCHAKS	Land boundaries
Ge- Eutric Gleysols	Kl- Luvic Kastanozems	Xl- Luvic Xerosols	Zg- Gleyic Solonchaks	