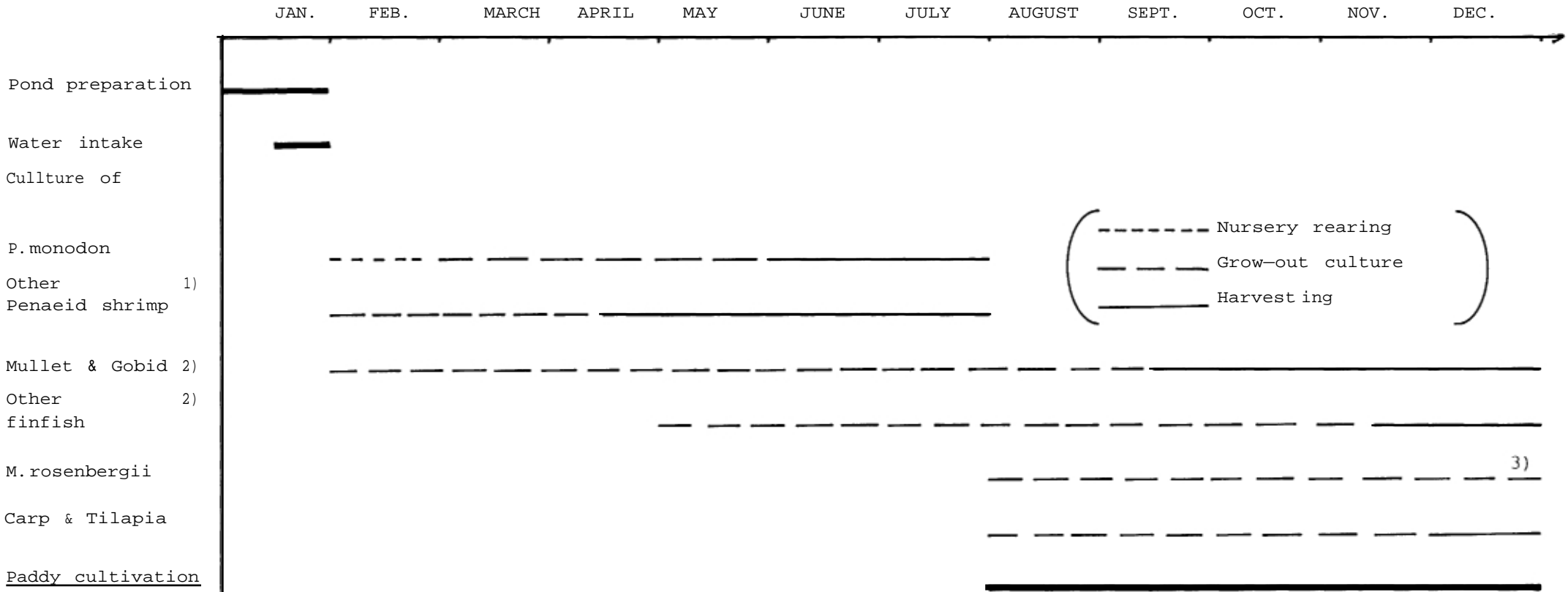




Appendix 7

CALENDAR FOR AGRO-AQUA FARMING IN THE PROJECT FARM



1) Autostocking of:
 P. indicus
 M. monoceros
 M. brevicornis

2) Autostocking of
 Mullet
 Gobid
 Catfish
 Seabass (Lates sp)

3) At least 8 months to reach marketable size(100g)

Appendix 8

SCHEDULE FOR MONITORING OF PHYSICO-CHEMICAL PARAMETERS

A. Schedule for water exchange and tidal data collection

Lunar day	Water Exchange	Tide (cm)
s	X	X
1	X	X
2		
3		
4		
5		
6		
7		
8		X
9		
10		
11	AB	
12		
13		
14	X	X
☉	X	X
1	X	X
2		
3		
4		
5		
6		
7		
8		
9		
10		
11		
12	X	X
.	x	x

Satkhira canal

☉ New moon

s Full moon

B. Schedule for physico-chemical data collection from project ponds

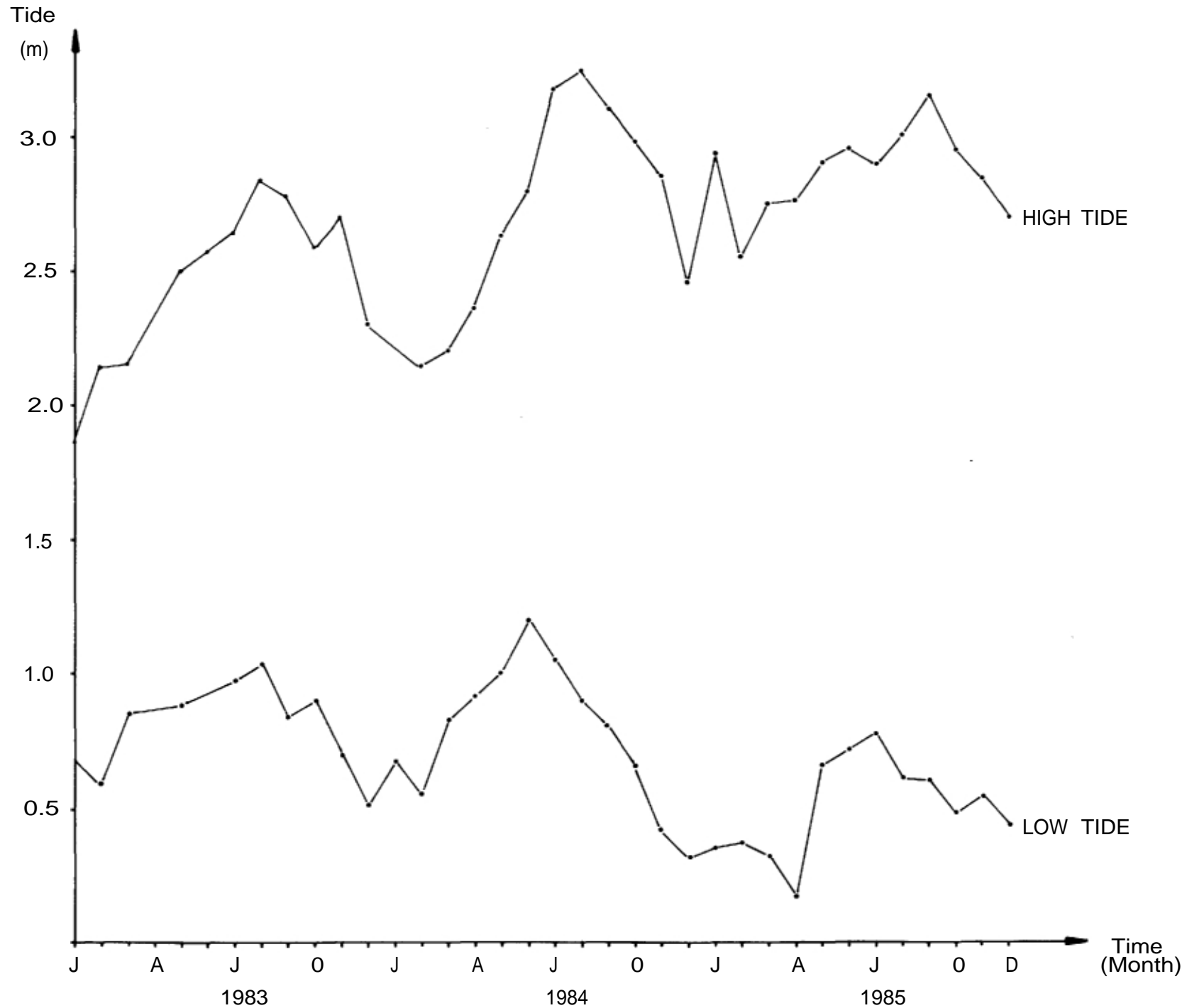
Pond No.	Salinity (ppt)	DO. (ppm)	pH	Temp (C)
1	AB			
2	AB			
3	AB			
4	AB			
5	AB			
6	AB			
7	AB			
8	AB			
9	AB			
10	AB	0400 hr ¹ 1500 hr ¹		
11	AB			
AAF	AB		XX	
NP-S (AAF)	AB	0400 hr ¹ 1500 hr ¹	XX	YY
Satkhira canal	YY			

AB Data collected before the spring tide water exchange started and after completion of the exchange.

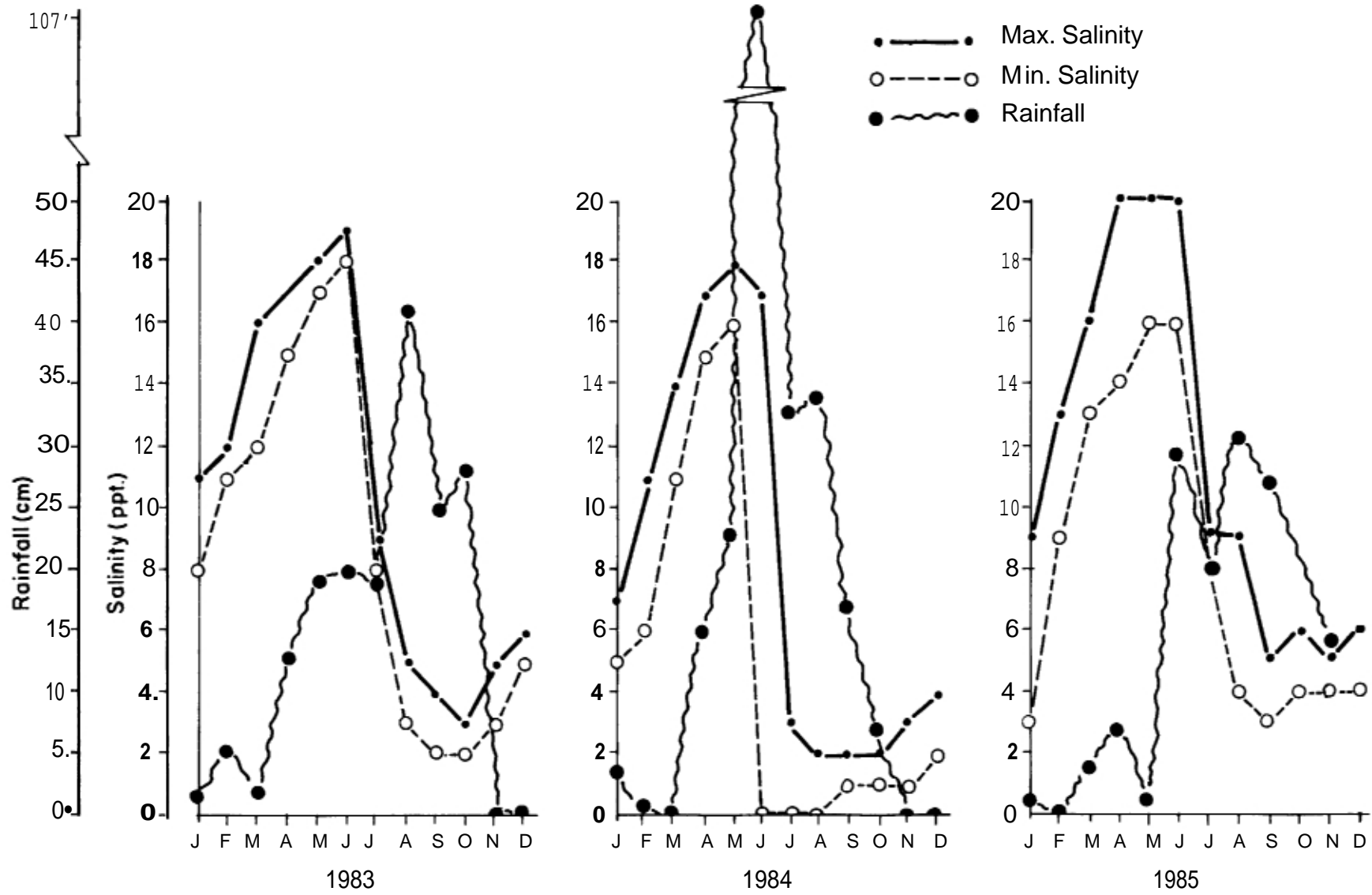
Once a week, but also as deemed necessary. Timing was not followed; data generally recorded at 1000 hrs.

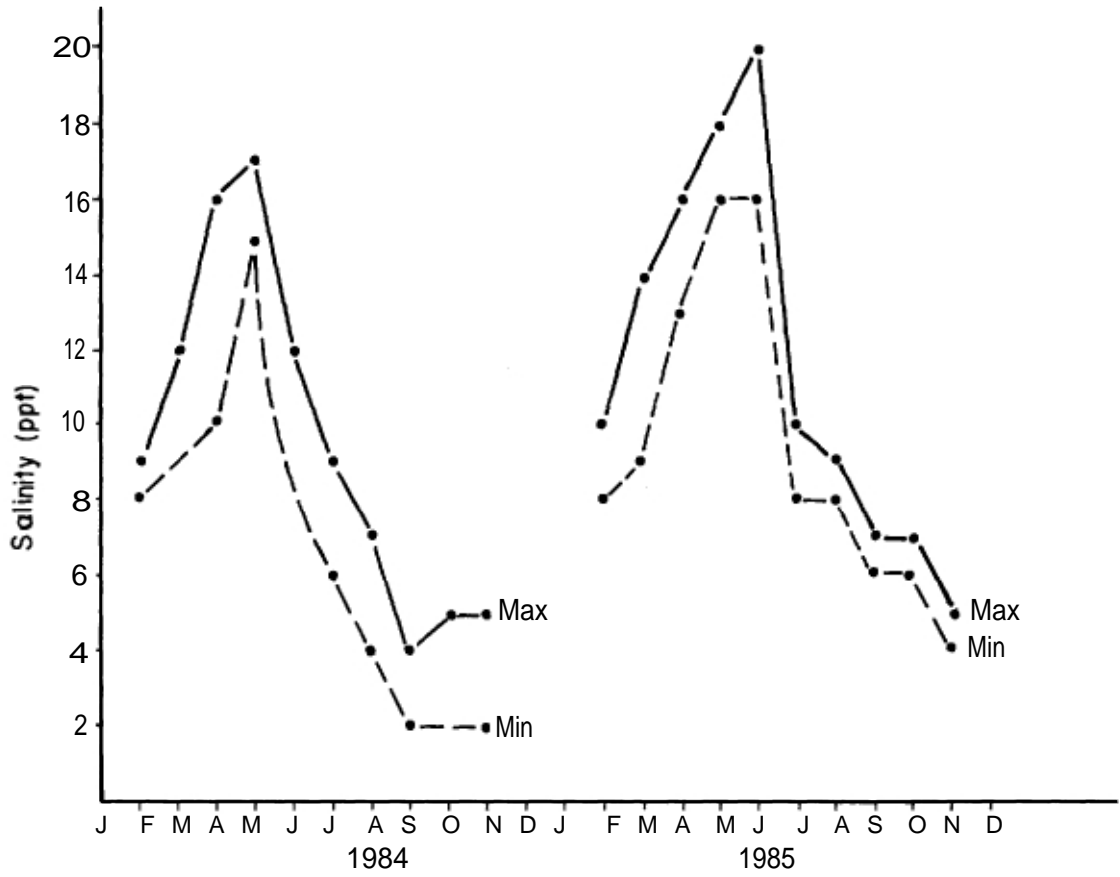
XX : Twice a month

YY : Every 3 days, surface temperature recorded at 1000 hrs.

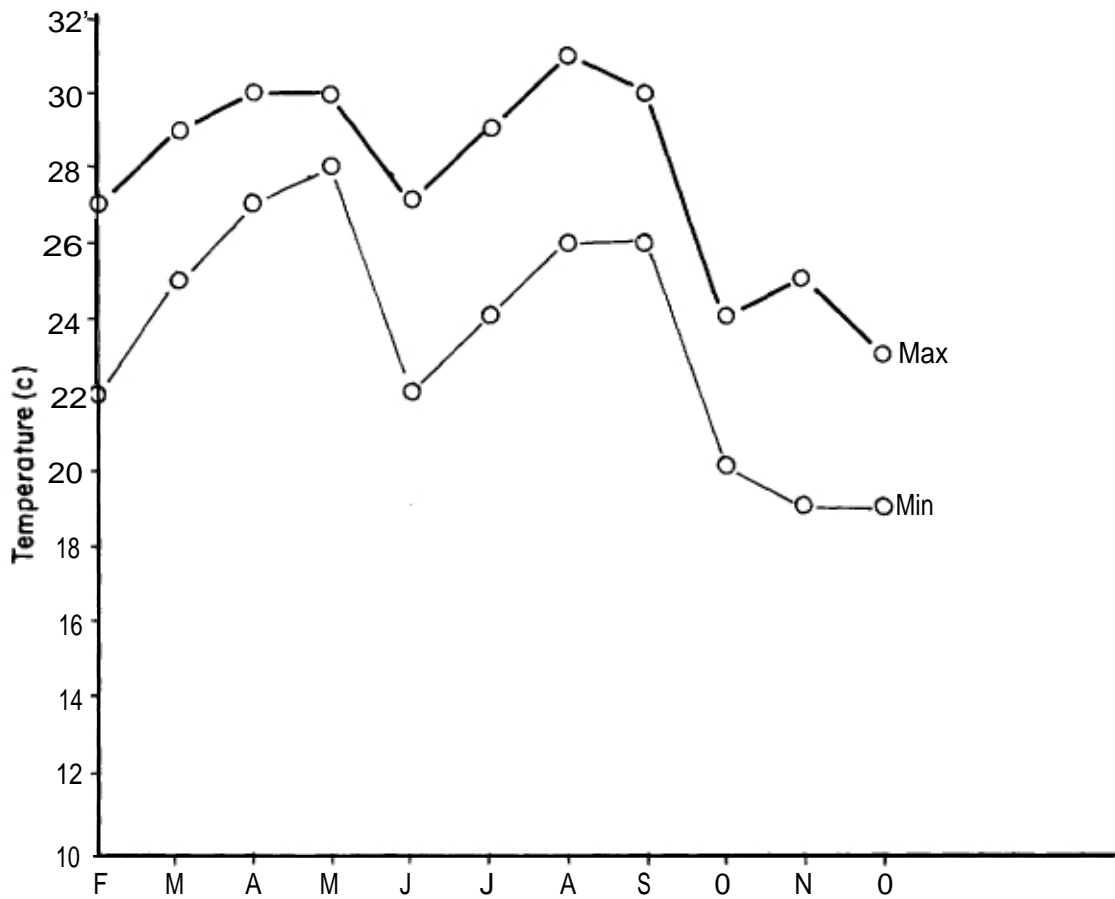


[36]





WATER TEMPERATURE RANGE IN POND 10, 1985



Appendix 12

SOIL ANALYSIS DATA

Farm	Station	pH	Ca	Mg	K	NH ₄ -N	P	S	B	Cu	Fe	Mn	Zn
			Ppt.										
* BOBP Shrimp Farm	AAF 1	7.4	7	5.55	0.30	7.42	2.0	37	0.3	9	21	3	Trace
	2	6.7	6	5.55	0.38	8.57	1.0	68	0.3	9	30	1	1
	3	7.4	6	5.88	0.32	14.20	2.0	38	0.4	8	31	2	1
	4	6.9	8	5.88	0.37	8.00	2.0	79	0.5	10	30	4	1
	5	7.4	7	5.54	0.34	0.57	2.0	32	0.2	9	20	1	1
	Pond 3	7.2	8	5.42	0.30	5.14	12.5	28	0.3	14	17	4	1.5
	Pond 5	7.4	8	5.52	0.30	7.14	2.5	23	0.2	6	25	4	1
	Pond 8	7.0	5	5.28	0.28	10.80	26.5	39	0.4	9	55	6	2
Shyamnagar (Private Farms)		7.3	5	4.94	0.29	7.42	3.5	30	0.4	4	10	2	1
Satkhira (Private Farm)		7.6	8	5.55	0.32	2.00	2.0	31	0.5	6	25	7	6
Critical level (lower) for paddy cultivation			2	0.8	0.2	75	14	14	0.2	1	10	5	2
(higher)			36	18	3.0	300	120	120	8	30	300	100	36

* Five locations were sampled in the agro-aquaculture fields.

Appendix 13
LIST OF BACKGROUND PAPERS FOR TRAINING COURSES

Course I, 20-23 July, 1985

- | | |
|--|----------------|
| 1. Water Management | Mahmudul Karim |
| 2. Agro-aquaculture technique | Mahmudul Karim |
| 3. Pest control and removal from shrimp ponds | Mahmudul Karim |
| 4. Farm shrimp harvesting techniques | Mahmudul Karim |
| 5. Some aspects of cultured shrimp and fish harvesting | Habibur Rahman |
| 6. Marketing of shrimp | M Jahangir |
| 7. Some aspects of farm management | Abul Kashem |

Course II, 8-18 December, 1985

- | | |
|--|--------------------------------|
| 8. Criteria for site selection for coastal aquaculture | A N Ghosh |
| 9. Designing of coastal laquafarms | A N Ghosh |
| 10. Life-cycles of cultivable palaemonid and penaeid shrimps and mullet fish | Kabir Ahmed and Habibur Rahman |
| 11. Identification procedure of cultivable palaemonid and penaeid shrimp and mullets | Kabir Ahmad and Habibur Rahman |
| 12. Identifications of selected shrimp species | Mahmudul Karim |
| 13. Identification of common shrimp postlarvae found in the project area | Mahmudul Karim |
| 14. Collection, segregation and transportation of fry | Rezaul Karim |
| 15. Shrimp seed collection, transportation and marketing | Mahmudul Karim |
| 16. Pre-stocking pond preparation in Satkhira agro-aquaculture farm | Mahmudul Karim |
| 17. Nursery rearing of <i>P. monodon</i> | Mahmudul Karim |

Course III, 7-10, April 1986

- | | |
|--|-----------------|
| 18. Feeding and feed preparation | Peter Funegaard |
| 19. Management practices in brackishwater aqua-farms | A N Ghosh |
| 20. Culture and management system of the shrimp culture demonstration farm, Satkhira | Razaul Karim |