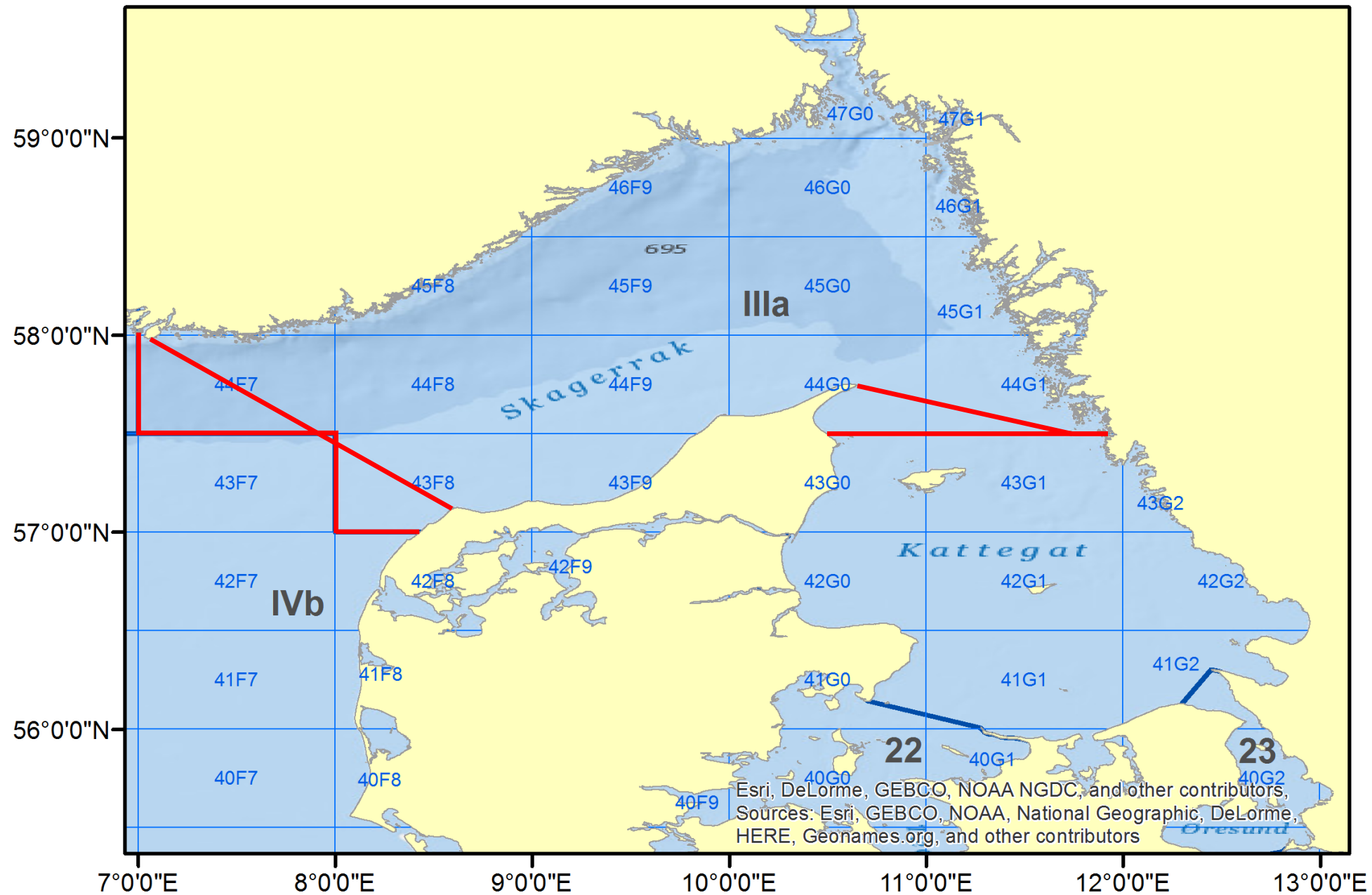


ICES Statistical Areas

ICES ACOM revisions from December 2015



Science for sustainable seas



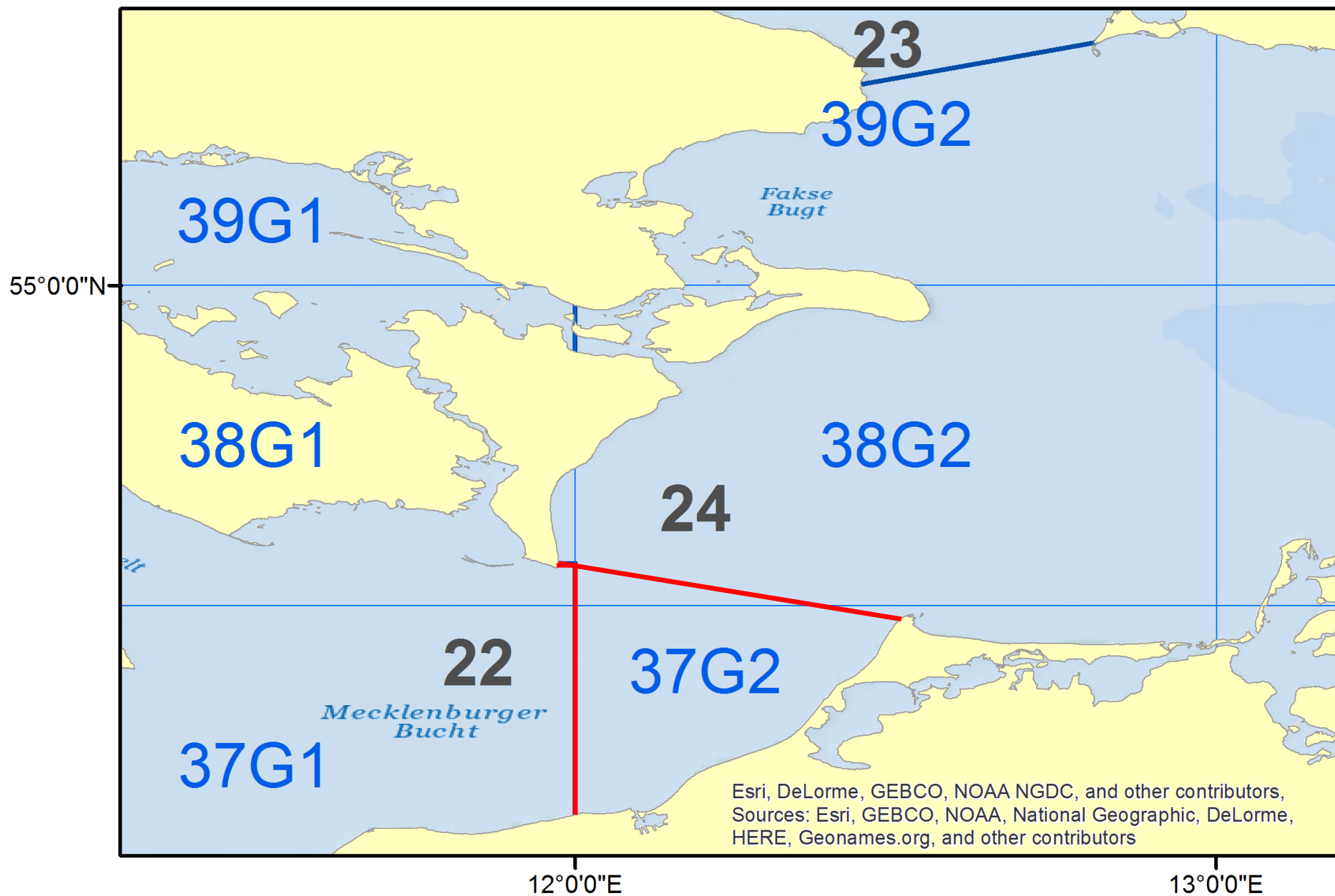
1. Skagerrak and Kattegat delimitation and denomination



New definitions:

Skagerrak (27.3.a.20): The geographical area bounded on the west by a line drawn from the Hanstholm lighthouse to the Lindesnes lighthouse and on the south by a line drawn from the Skagen lighthouse to the Tilstlarna lighthouse and from this point to the nearest point on the Swedish coast.

Kattegat (27.3.a.21): The geographical area bounded on the north by a line drawn from the Skagen lighthouse to the Tilstlarna lighthouse and from this point to the nearest point on the Swedish coast and on the south by a line drawn from Hasenøre Head on the east coast of Jutland thence across the Great Belt to Gniben Point on the west coast of Zealand, thence along the north coast of Zealand to Gilbjerg Head; thence across the northern approaches of the Øresund to the Kullen on the coast of Sweden.



2. Belt Sea/Baltic West of Bornholm delimitation and denomination



Definition for border line between divisions 27.3.b and 27.3.d should be in line with the SD 22 and 24 border line, namely the “line starting at Gedser Odde (54°34' north latitude, 11°58' east longitude); thence due east to 12°00' east longitude; thence due south to the coast of Germany.

3. Division 27.3.d validity

ICES 2004 document on ICES area definitions [Proposal for additional reporting areas under the STATLANT programme in FAO area 27. 16 March 2004. ICES] had a remark for division IIId – ‘Defunct’, which is now used in the definitions hosted by the FAO. ICES ACOM recommended to change the status back to ‘Valid’.

4. Northeast Atlantic area referenc



- ICES ACOM recommends to update the outdated country references in the relevant area definitions
- ICES ACOM recommends to adopt reference codes with hierarchical structure (like 27.5.b.1.b or 27.3.d.28.1)
- ICES ACOM recommended to create a reference point for area definitions in ICES (publically available online documentation in addition to the map services provided at present).