



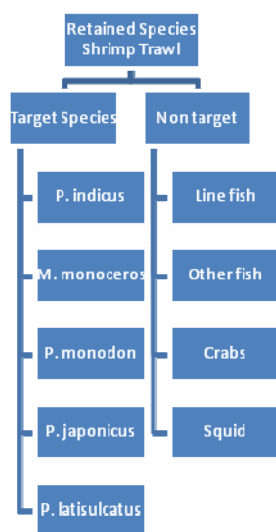
EAF TOOL-ISSUE IDENTIFICATION WORKSHEETS

(Date of Creation 17 June 2011)

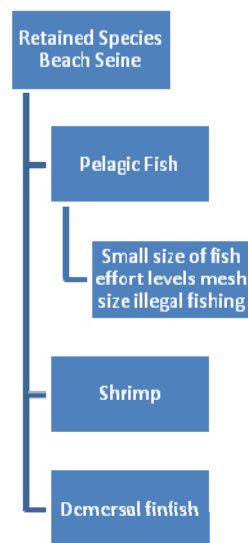
RETAINED SPECIES WORKSHEET

These are the species that are the focus of the fishery. This also looks at all aspects of the management of the species/stock including any discards and illegal fishing on these stocks.

Examples



a.



b.

Examples for retained species for (a) industrial shrimp trawl fishery (b) beach seine fishery

WHAT TO DO?

- (1) Identify any species that are caught by the fishery that are
 - The main target species or groups of target species.
 - Other species or groups that are caught and kept
- (2) List any issues that are causing problems associated with the capture of these species (e.g. too much effort, gear size, catch rates too low etc)

Write the list below or put them on the system cards if provided or use the electronic version





FISHERY

RETAINED SPECIES

1 a - TARGET SPECIES

1 b - OTHER SPECIES CAPTURED AND SOLD

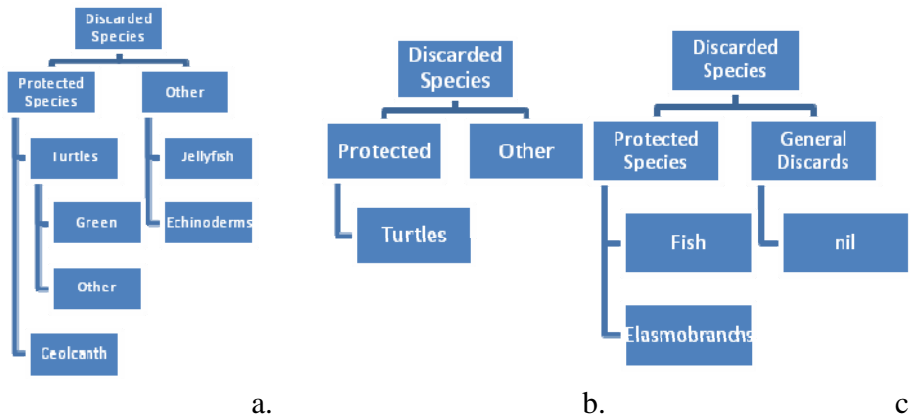
2. ISSUES and PROBLEMS FOR RETAINED SPECIES



NON RETAINED SPECIES WORKSHEET

These are the species that the fishery does not want to (is not allowed) to catch or keep.

Examples



Examples for non retained species for (a) industrial shrimp trawl fishery (b) beach seine fishery c) small scale line fishery

WHAT TO DO?

- (3) Identify any species that are not allowed to be caught by the fishery that are
 - Protected Species – not allowed to be caught or kept by the fishery
 - Discard or trash species – these species are never kept as they have no market value
- (4) List any other issues that are causing problems associated with the capture and death or release of these species (e.g. social/public concerns, NGO actions)

Write the list below or put them on the system cards if provided, or type into the electronic version.



FISHERY

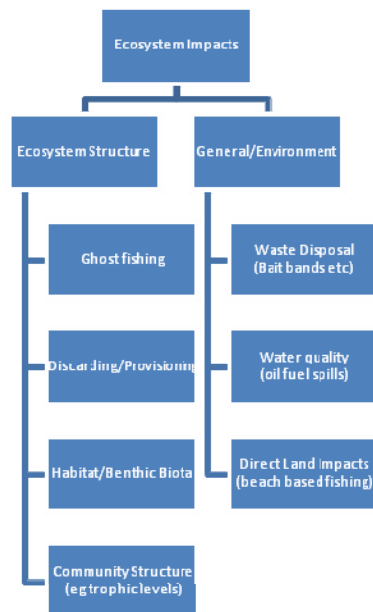
NON RETAINED SPECIES ISSUES

1. SPECIES NOT ALLOWED TO BE CAUGHT OR SPECIES THAT ARE NOT MARKETING?
2. ISSUES ASSOCIATED WITH THE CAPTURE OF THESE SPECIES



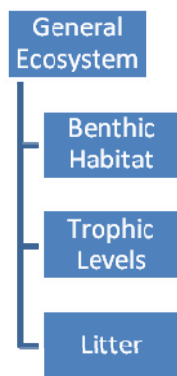
ECOSYSTEM WORKSHEET

These cover the broader impacts the fishery may be having on the ecosystem. And the impacts of the environment on the fishery

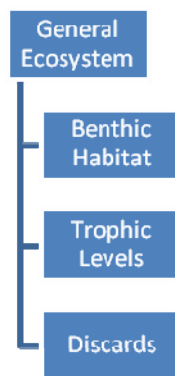


Possible Impacts

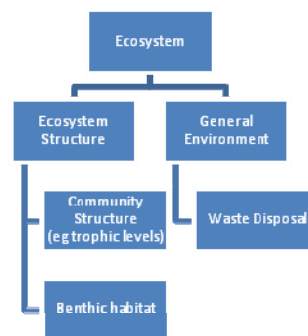
Examples from fisheries



a.



b.



c.

Examples for ecosystem impacts for (a) industrial shrimp trawl fishery (b) beach seine fishery c) small scale line fishery

WHAT TO DO?

- (5) Identify any potential impacts the fishery may have on the broader ecosystem



- The ecosystem of the fishery – habitat, trophic levels, discarding
 - The broader environment – waste disposal on boats, spilling oil/fuel etc.
- (6) List any other issues associated with the fishery including any social/public concerns, NGO actions etc. related to the fishery's impacts on the ecosystem or environment.

Write the list below or put them on the system cards if provided, or type into electronic version.

FISHERY

POTENTIAL ECOSYSTEM ISSUES AND IMPACTS OF THE FISHERY

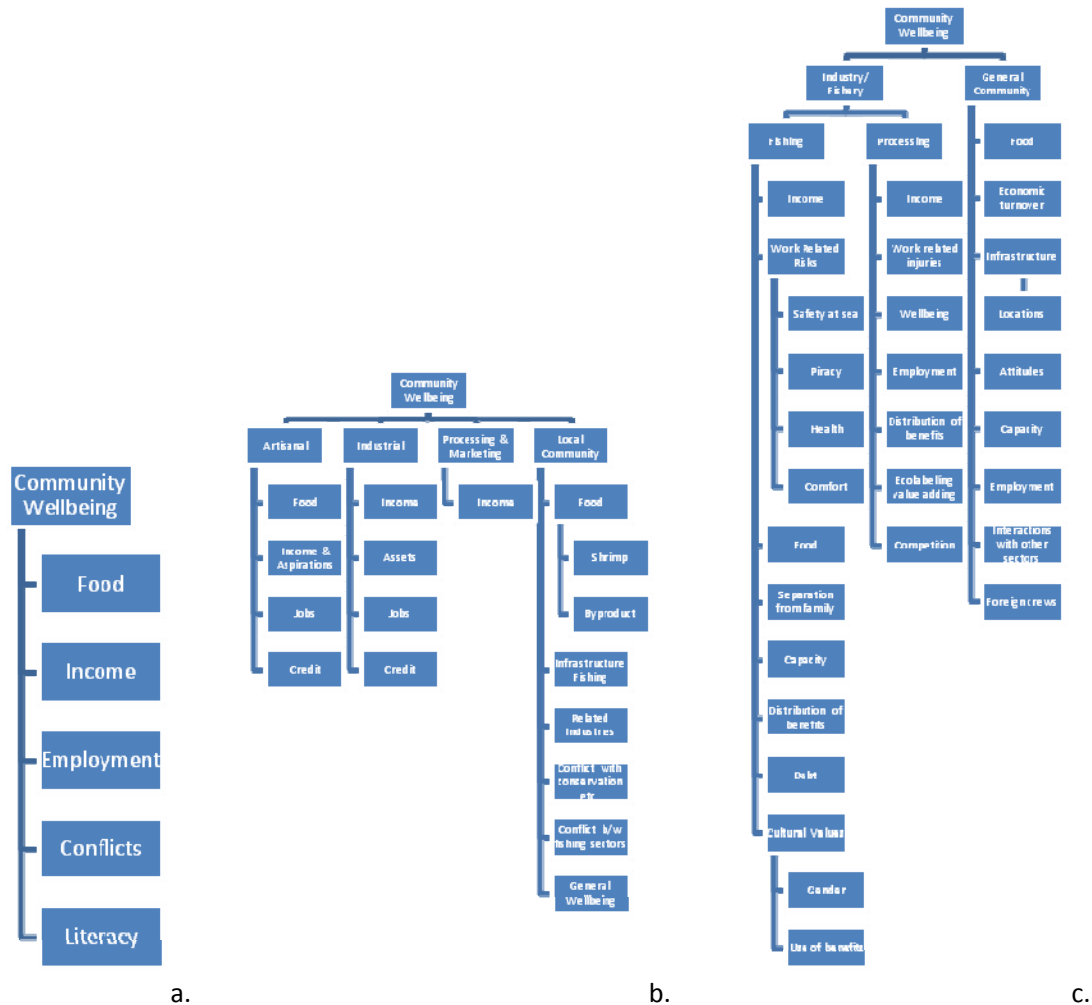
POTENTIAL ENVIRONMENTAL IMPACTS OF THE FISHERY

Human Wellbeing (SOCIAL AND ECONOMIC) WORKSHEET

These cover the potential social and economic impacts (both good and bad) of the fishery on the wellbeing of the local or regional communities associated with that fishery.



Examples from Fisheries



Examples for a) beach seine fishery b) industrial shrimp fishery c) small scale line fishery

WHAT TO DO?

- (1) Identify the potential issues and impacts on community wellbeing that are associated with the fishery for:

- a/ The fishers and their direct dependents
- b/ The processing sector (if relevant)
- c/ The local community (who are not directly involved in fishing)

- (2) List any other issues associated with the fishery including any social/public concerns, NGO actions other sectors activities that relate to the wellbeing of the fishers or the community especially those that may affect the management of the fishery (eg political situation, security, general poverty levels, etc.)

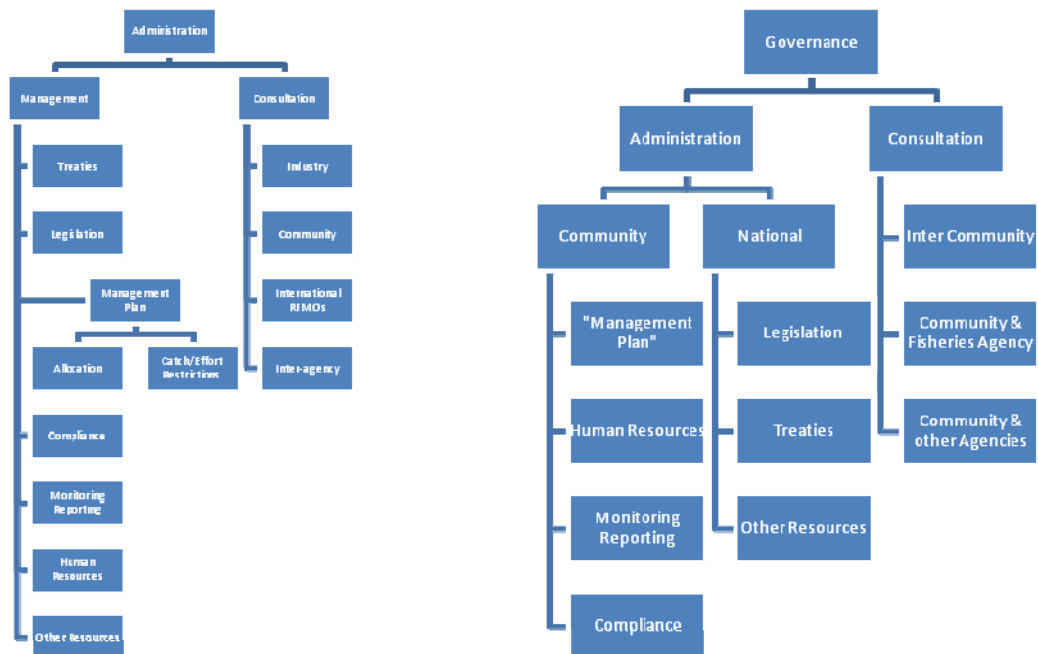


Write a list, put them on the system cards if provided, or write to a word file on computer.

GOVERNANCE WORKSHEET

This covers all the legislative, administrative and bureaucratic processes that need to be completed to enable the issues in the previous four trees to be dealt with effectively. These issues may cover a number of levels of government and the industry.

Examples from Fisheries



Examples for (a) Govt. managed fishery b) Community managed fishery

WHAT TO DO?

(1) Identify all the elements needed to have a good governance system for the fishery including:

- a/ The actual management of the fishery
- b/ Consultation processes within the fishery and with other groups

(2) List any problems or concerns with the governance of the fishery including any social/public concerns, especially those that may affect the implementation of the management (eg political will, security, public attitudes etc.)

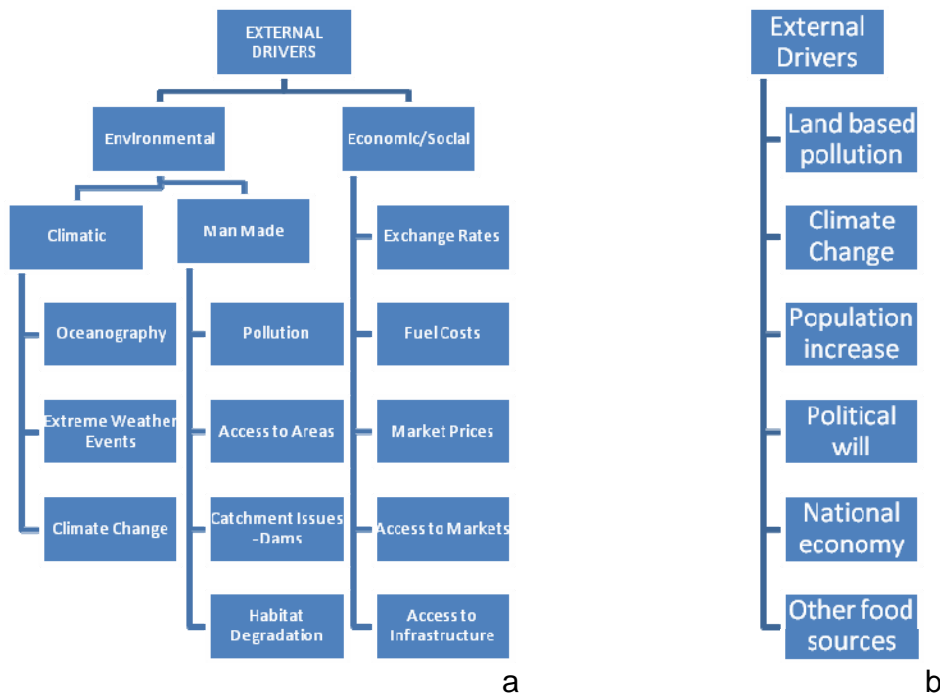
Write a list, put them on the system cards if provided, or write to a word file on computer.



EXTERNAL DRIVERS WORKSHEET

This covers both the environmental and social/economic issues that impact the fishery, but which are not controlled by the management plan. These issues still need to be taken into consideration when developing management arrangements because they are likely to affect what is possible.

Examples from Fisheries



Examples for (a) an industrial shrimp fishery (b) and a beach seine fishery

WHAT TO DO?

(1) Identify all the issues that may affect the fishery caused by:

- a/ Natural changes in the environment
- b/ Local Man made changes to the environment
- c/ Economic or social impacts external to the fishery

Write a list, put them on the system cards if provided, or write to a word file on computer.

