

**FAO Workshop on the Global  
Database for Vulnerable  
Marine Ecosystems**

**Rome, Italy**

**7-9 May 2014**

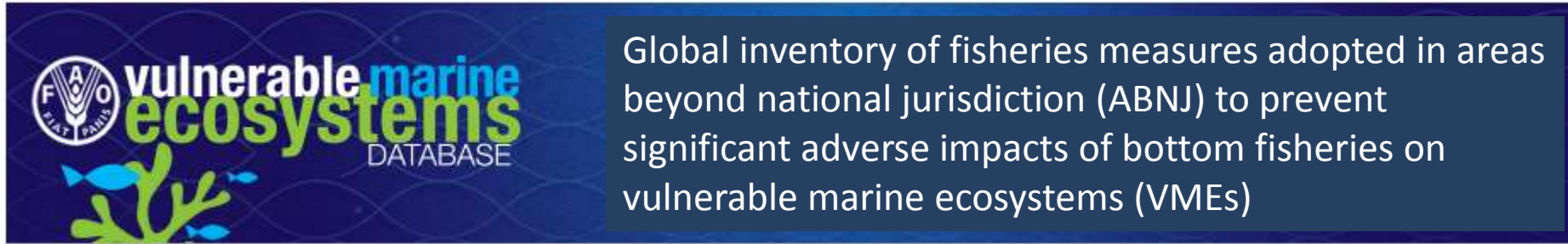
# Important note on VME DB mock-up

The information in this presentation is NOT  
factually correct

and is for

demonstration purposes only

# Banner



Name: Vulnerable Marine Ecosystem database

Short name: VME DB

Descriptive text:

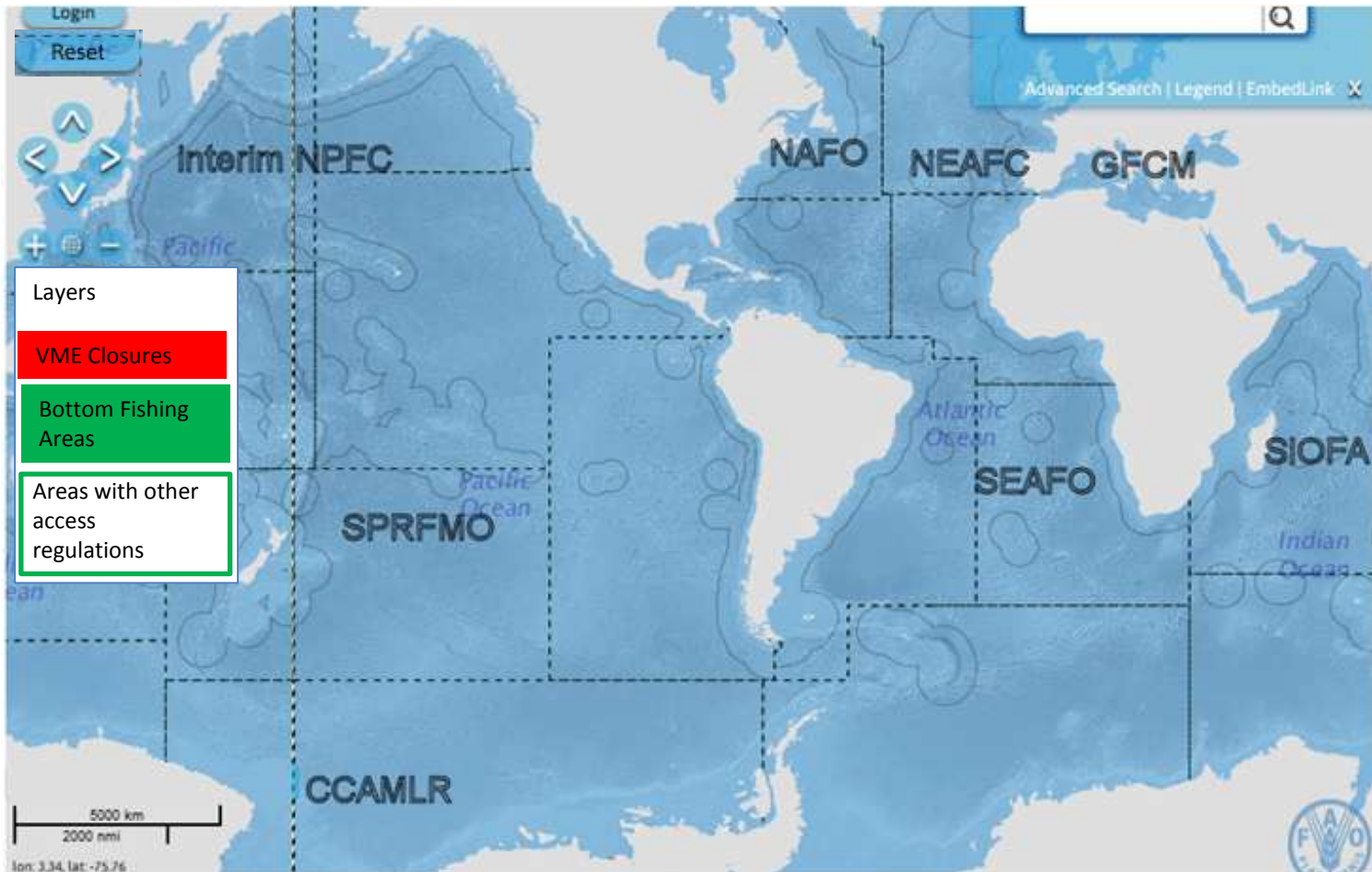
Global inventory of fisheries measures adopted in areas beyond national jurisdiction (ABNJ) to prevent significant adverse impacts of bottom fisheries on vulnerable marine ecosystems (VMEs)

# Entry Page

(show regulatory areas)

A second bar containing layers, legend, search and help would remove most of the clutter from the map

Year **2014** Select Region **SE Atlantic (SEAFO)** Select Projection: **WGS84 (4326)**



## Legend

- FAO fishing areas
- 200 nautical miles arcs

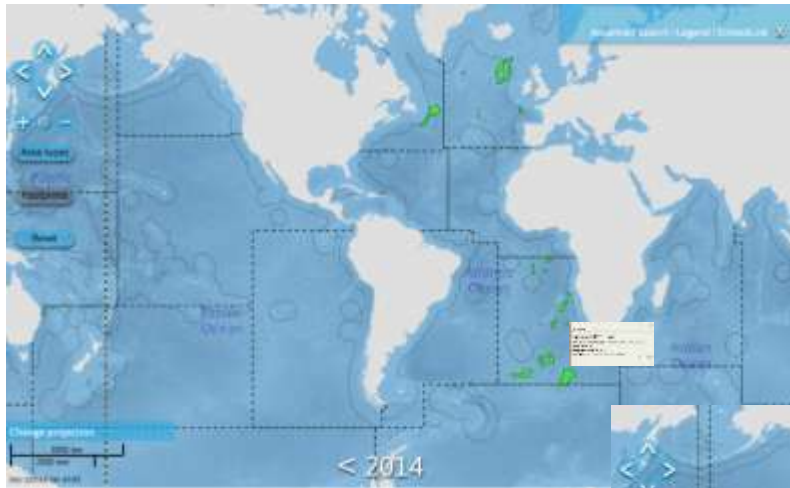
## Search

The search form includes fields for 'On Management Entity hierarchy', 'W. Coordinates', 'In. Coordinates', 'In. SMC/CRS', 'Select', 'In. Yr', and 'Default'. It also has 'Show' and 'Reset' buttons.

## Help



# Examples of three layers



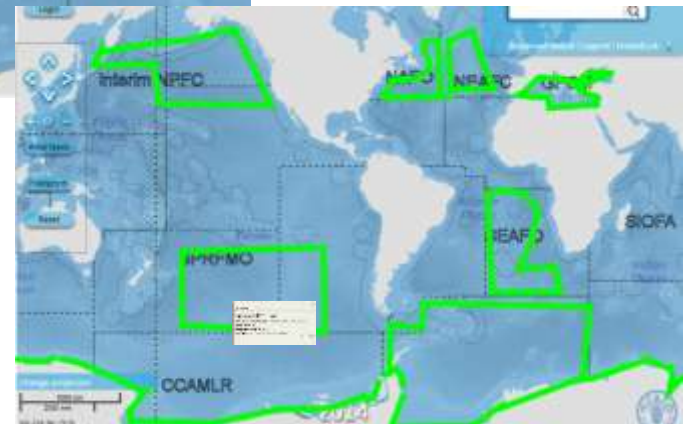
Bottom fishing areas

Pop-ups should be active on all delineated areas



VME Closure

Areas with other access regulations



# Regional views

Names as used by RFB

Insert selector bar but with VME names

## Management regulations related to UNGA Res. 61/105

### Bottom fishing areas

■ Existing bottom fishing areas

### VME Closures

■ VME

□ VME Risk areas

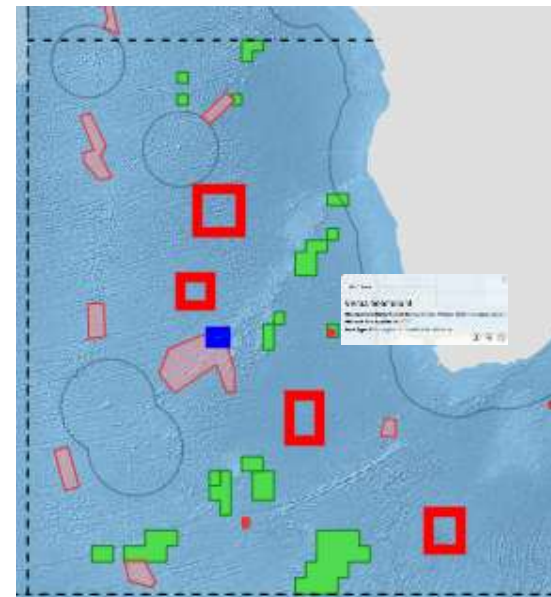
■ Extended closed areas

### Areas with other access regulations

■ New fishing areas

Select Regional Fishery Body: (Select an RFB...) Select Projection: WGS84 (4326)

## Regional sea (RFMO)



Pop-ups should be active on all delineated areas

## Legend

FAO fishing areas  
200 nautical miles arcs

## Search

Glossary and definitions



In factsheet and mouse over term



Link to this in footer (From FAO RFB web pages)

# Pop-ups

- On all areas shown - as all have measures
- But all pop-ups do not need a factsheet when information is on pop-up
- Include exact dates
- Use regional names
- Measure: little more description and link
- Include year slider
- Include “area” in km<sup>2</sup>.

## Measure summary could also be:

Enforce since 16 December 2010, closed 1 Jan 2011 – 31 Dec 2014, review in 2014

VME Area

## Eastern Gulf of Lions

**Management Body/Authority:** General Fishery Commission for the Mediterranean sea

**Measure :** Bottom fishing effort limitations since 1 Jan 2009

**Area:** 12 345 678 km<sup>2</sup>

**Area type:** Fisheries Restricted Area

< 2012 >

Select... [X]

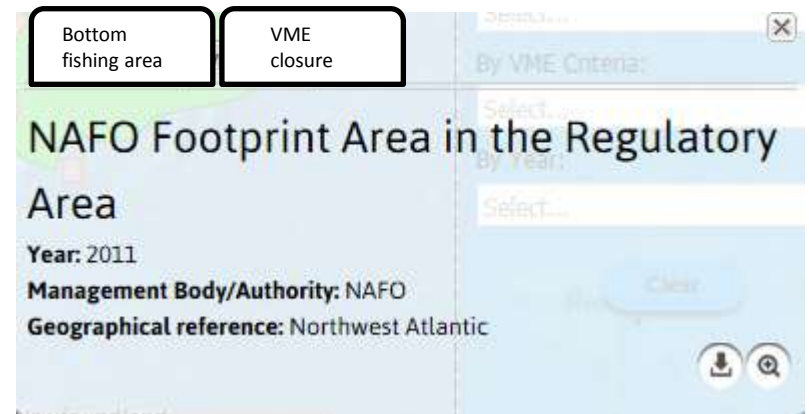
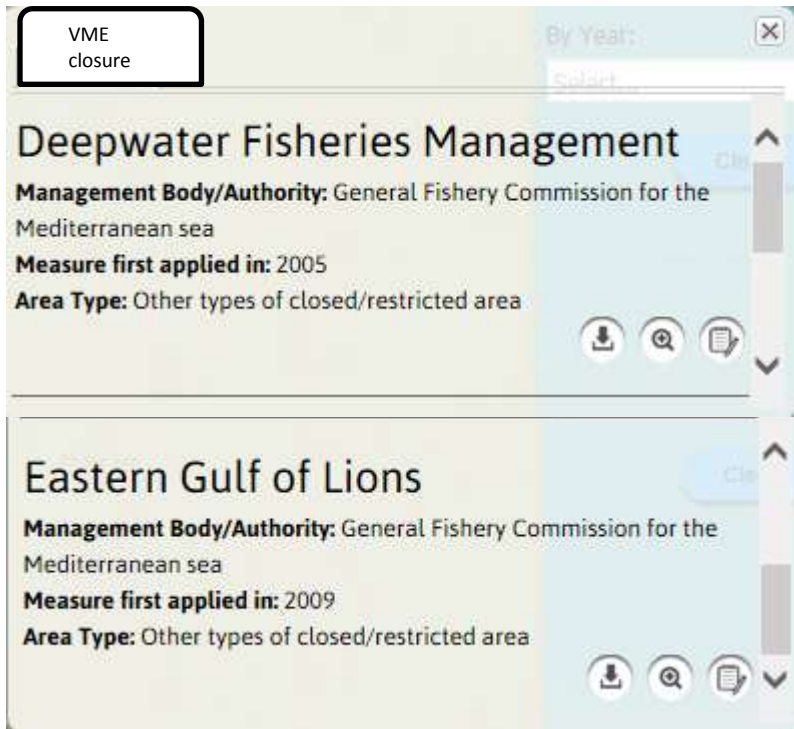
Select...

Select...

Select...

[Download] [Search] [Print]

# Pop-ups (behaviour)



- Keep dual behaviour with slider on right and tabs
- Rename tabs

Include RFB name for type of closure in pop-up. The table labels are form the generic labels for the layers in the entry page.

# Regional factsheets

- Include definitions (and glossary) tab
- Remove specific area information
- Print, pdf, xml, source, citation ok (but get source and citation correct)
- Only provide for current year (but some entries may have a history)

Regional Body name

[Print](#) | [PDF](#) | [XML](#) | [Source](#) | [Citation](#)

2014

[Overview](#) | [Definitions](#) | [Management](#) | [Reports](#) | [Media](#)

1. Overview (what the regional has done in response to 61/105)
2. Definitions
  - New fishing areas
  - Existing fishing areas (or footprints),
  - VME closures etc
3. Management
  - Exploratory fishing protocols
  - Encounter protocols
  - Thresholds
  - Indicator species
  - Sources of information
  - New fishing areas
4. Reports (those that are general references)
5. Media

# VME Closure factsheets

(Also factsheets for Bottom Fishing Areas, etc)

- Remove regional information
- Meeting reports: 1. Commission (adoption of measure), 2. SC (Scientific advice), 3. Science papers to develop advice
- Use regional names
- Add dates and bit more information
- Summary history of measures applicable to VME should be given



Wust (Wüst) Seamount  
Selected year: 2013

Description | Map | Management | Regional overview | Print | PDF | XML | Source | Citation

Regional Body name

Selected year: 2006 2007 2008 2009 2010 2011 2012 2013 2014

Description | Map | Management | Reports | Media

1. Description (including new field on descriptive text)
2. Map
3. Management
  - Measures specific to this VME area (only)
4. Reports (maintain but divide into three)
  - Managerial meetings where closure etc decisions were made
  - Reports with specific information on this measure
  - Scientific papers on which the advice was based or key documents that have background
5. Media