

ASFA/2005/ 27

Ifremer Report – France

ASFA BOARD

No : French report ASFA/2005-27

Septembre 05 – IFREMER/DOP/DCB/SDB-BLP/JP/05-145

Rome (Italy)

3 October – 8 October 2005

par Jacqueline PROD’HOMME

BLP
Bibliothèque La Pérouse
Centre de Documentation sur la Mer

1. Institute Name of French National Partner	3
2. 2004-2005 – Composition of the French ASFA indexing network : Board member and input staff names.....	3
3. 2004-2005 – French ASFA Input statistics with WWW-ISIS-ASFA software	3
4. Distribution list for complementary ASFA entitlements	8
5. Usefulness of ASFA products	9
6. Monitoring list information.....	11
7. Problems : new functionalities in the input product, improvement for a better quality of the output products	11
8. Development, user services, training activities and future	11

ANNEXES

Annex 1 :

Document IFREMER ASFA/2005/ 27a :
 Statistics of French ASFA Input / Statistiques de production du Réseau Français d'Indexation

Annex 2 :

Document IFREMER ASFA/2005/27b :
 Liste des revues analysées par le Réseau français / French Serial List

Annex 3 :

Document IFREMER ASFA/2005/ 27c: French Network – June 2005
 Réseau français ASFA Maj: juin 2005

Annex 4 :

Document IFREMER ASFA/2005/27d
 French report – CSA Usage report - statistics January 2005-Aug 2005

1. Institute Name of French National Partner

Ifremer (Institut Français de Recherche pour l'Exploitation de la Mer), Direction des Opérations, Centre de Brest / SDB – Bibliothèque La Pérouse (BLP), Centre de Documentation sur la Mer , 15 rue Dumont d'Urville , Technopôle Brest-Iroise – BP 70 – 29280 PLOUZANE (France)

Tél. : 33 (0)2.98.49.88.71 – Fax : 33 (0)2.98.49.88.84

Email : Jacqueline.Prodhomme@ifremer.fr ou jprodhom@ifremer.fr

URL : <http://www.ifremer.blp.fr>

2. 2004-2005 – Composition of the French ASFA indexing network : Board member and input staff names

If in 2003-2004, the French ASFA network had known some modifications about the collaborating centers and indexers: from ten members (with 11 indexers) at the ASFA Board 2003 to 8 members (9 indexers), a decrease of the manpower in 2004 because 2 disengagements in 2004 (the partners dropping out from ASFA were: IRD and IBBA laboratoire Biologie et Biotechnologie of Caen , **in 2005 we are always 8 members in the French network but only 8 indexers instead of 9** (because nobody at INRA St Pée in 2005; however the documents analyzed by this center are now in charge of INRA SCRIBE for the current year). In the other centers : no change, the same input staff at Ifremer, Intechmer, SHOM, INRA SCRIBE, Station biologique de Roscoff, Cemagref. To find new collaborating centres requires taking the necessary steps and becomes very difficult. **In September 2005, the actual composition of our network is the following: 8 members (8 persons) :**

- Ifremer with Jacqueline Prod'homme, Board member and responsible of input staff (email Jacqueline.Prodhomme@ifremer.fr) or : jprodhom@ifremer.fr and another indexing person as François Cabane fcabane@ifremer.fr . We hope to have in November or December 2005 a new indexer who would be operational in 2006 (the librarian of Ifremer Palavas (on Mediterranean coast)
- MNHN (Museum National d'Histoire Naturelle) – Laboratoire d'Ichtyologie (Paris) with Mathieu Andro (andro@mnhn.fr).
- SHOM (EPSHOM) Service Hydrographique et Océanographique de la Marine – Etablissement principal du SHOM with Joël Grall.
- INTECHMER/CNAM (Institut National des Sciences et Techniques de la Mer / Conservatoire National des Arts et Métiers) with Maguy Guary who integrated the French ASFA network on July 2000.
- INRA (Institut National de la Recherche Agronomique) – SCRIBE (Station Commune de Recherche en Ichtyologie Biodiversité et Environnement) de Rennes with Agnès Girard agirard@beaulieu.rennes.inra.fr (since Nov. 2001)
- INRA (Institut Natl Recherche Agronomique) - Station d'hydrobiologie de Saint-Pée-sur-Nivelle : **nobody in 2005** – but the indexing made by INRA Rennes A. Girard)
- Station Biologique de Roscoff with Maryse Collin. This station is attached to the University of Paris VI Jussieu and is one of marine station of the University.
- Cemagref Centre de Bordeaux (Cestas) with Marie-Pierre Maleyran

We also can indicate that the official documents sold by IRD Edtion (old indexing center) are analyzed now by myself (responsible of the ASFA network) or if they are co-published with other institutes as MNHN, the literature is analyzed by MNHN.

All addresses, email and URL of the French indexers are indicated in Annexe 2. ASFA/2005/27/b

3. 2004-2005 – French ASFA Input statistics with the WWW-ISIS ASFA Software

You'll find the French statistics of ASFA input as follow :
All records submitted in 2004 and 2005 have been prepared using the www-ISIS-ASFA software. All input centres use the www-ISIS-ASFA software in a alone environment.

Since 1988, the number of records sent to CSA via FTP (File Transfer Protocol) is the following :

Répartition de la Production française de 1988 à 2004 (notices envoyées à CSA)

année	1988	1989	1990	1991	1992	1993	1994	1995	1996	1997	1998	1999	2000	2001	2002	2003	2004
notices	1390	1141	950	1100	1306	1111	1121	1326	1375	1406	1590	1768	1651	1175	1232	1254	1280

Par contre, l'éditeur CSA a retenu et fourni au Board 2003, les statistiques suivantes pour la production française de 1988 à 2003 , and we add , in this paper, the French input sent in 2004:

année	1988	1989	1990	1991	1992	1993	1994	1995	1996	1997	1998	1999	2000	2001	2002	2003	2004
notices	1390	1111	950	1100	1308	1111	1121	1296	1375	1407	1591	1769	1651	1173	1232	1254	1280

After a French ASFA input decreasing strongly in 2001 (1175 records in 2001 instead of 1651 in 2000) , **we have, each year, since 2002, a light increase of the French ASFA input** : + 5% in 2002 with 1232 records, + 1,8 % en 2003 (with 1254 records), **up 2, 1 % in 2004 (with 1280 records)**

The French ASFA input could be more significant but there is always a lack of manpower (indexers) in several indexing centres, especially Cemagref, INRA St Pée sur Nivelles Hydrobiologie: (nobody as indexer in 2005),

There is a light backlog in the input : at the level of the grey literature for Cemagref,

At Ifremer we have a little delay in the input of some serial titles not cover to cover and which are published very irregularly, on the other hand in 2004-2005 we make up for lost time which we had in the indexing of the grey literature as dissertations (thesis) because in 2004 we analyzed 59 documents as dissertation and in 2005 91 records of "dissertations" appear in CSA/Illumina/ASFA at the update 200508.

In 2005, the documents at the charge of INRA St Pee are made by INRA/SCRIBE (Rennes)

The official documents sold by IRD Edtion (old indexing center) are analyzed now by myself (responsible of the ASFA network) or if they are co-published with other institutes as MNHN, the literature is analyzed by MNHN. and IRD does not publish any more grey literature (only at the Noumea Center which will send to me the literature for indexing.

We think that 2005 will allow the increase of the ASFA input because we have many proceedings (symposiums). On September 22, we sent more than 1250 records to CSA and we still hope to realize 100-150 records.between October and December 2005..

On the server CSA/Illumina/ASFA 1039 French records already appear on 31 August update : 571 records in ASFA 1 (if05* and asfa 1 (SF)), 427 records in ASFA 2 (if05* and asfa 2 (SF)), 183 records in ASFA 3 (if05* and asfa 3 (SF)).

We have the matter to index but there is often a problem of no availability of people.

But it is important to have an excellent input (better to have a work of quality rather than to have a quantity !!!!!)

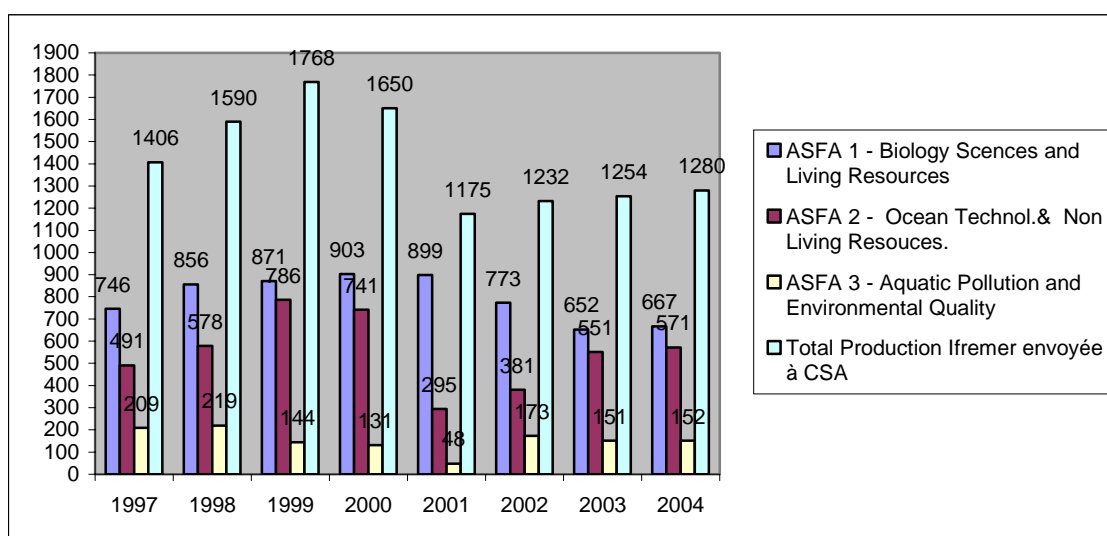
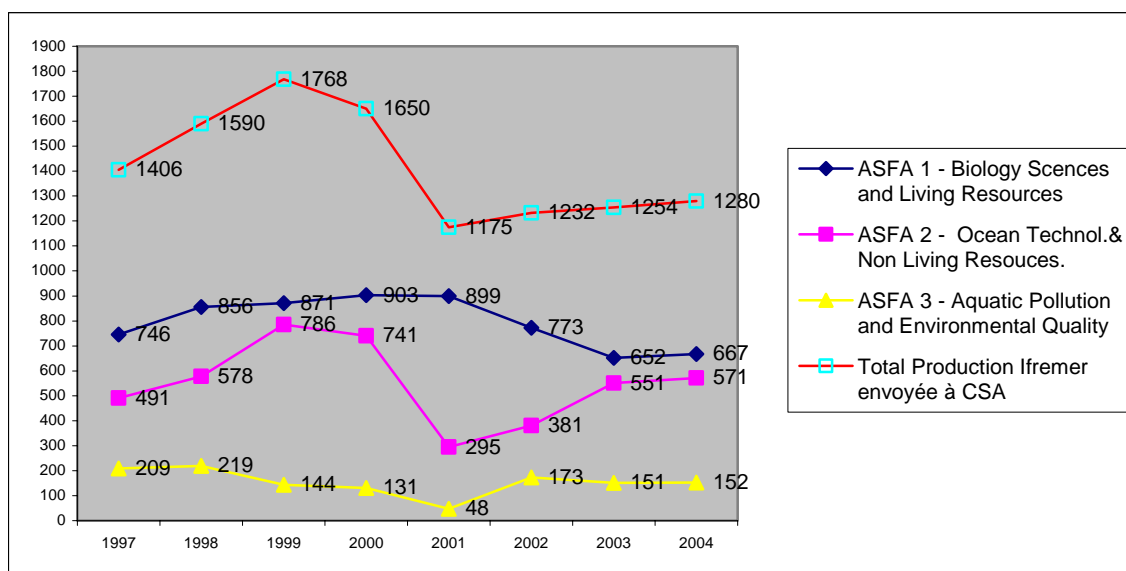
You'll find enclosed the statistics of the French ASFA input and the distribution between French indexing centres (doc. ASFA/05/27a). 1280 records in 2004 (instead of 1254 records in 2003) and we can indicate that Four among the collaborating centers brought to Ifremer a strong collaboration in 2004 : there were SHOM (312 records), INTECHMER (256 records), MNHN (184 records) and INRA SCRIBE (122 records)

The French ASFA input can be shown under various distributions : we have the distribution according to the ASFA journals with journal indicated in Subfile SF (ASFA1, ASFA 2, ASFA 3) in CSA/Illumina/ASFA .

We'll begin by the French input from 1997 to 2004 with the distribution according to the ASFA prints :

French ASFA input 1997-2004 : Distribution according to ASFA journals (In CSA/Illumina ASFA - Subfile Field (SF) ASFA 1, ASFA 2, ASFA 3)

	2004		2003		2002		2001		2000		1999		1998		1997	
	nb	%	nb	%	nb	%	nb	%	nb	%	nb	%	nb	%	nb	%
ASFA 1 - Biology Sciences and Living Resources	667	52	652	52	773	62,7	899	76,5	903	54,7	871	49,26	856	53,84	746	53,06
ASFA 2 - Ocean Technol.& Non Living Resouces.	571	44,6	551	44	381	30,9	295	25,1	741	44,9	786	44,46	857	53,9	491	34,92
ASFA 3 - Aquatic Pollution and Environmental Quality	152	11,8	151	12	173	14	48	4,09	131	7,94	144	8,14	219	13,77	209	14,86
Total Production Ifremer envoyée à CSA	1280		1254		1232		1175		1650		1768		1590		1406	



A commentary on the French ASFA input in 2004 :

The statistics are the following : 1280 records sent to CSA :

In 2004, 52 % of records dealing with ASFA 1 (Biology Sciences and Living Resources) instead of 52% in 2003, 62,74 % in 2002 , 76,51 % in 2001 → a decrease of records in ASFA 1 since several years,

44,6 % of records dealing ASFA 2 (Ocean technology and Non Living resources) in 2004 instead of 44% in 2003, 30,92 % in 2002 , 25,11 % in 2001 : stability between 2004 and 2003, but increasing since several years,

11,8 % of records dealing with ASFA 3 (Aquatic Pollution and Environmental quality) in 2004 instead of 12% in 2003, 14 % in 2002, 4,09 % in 2001.

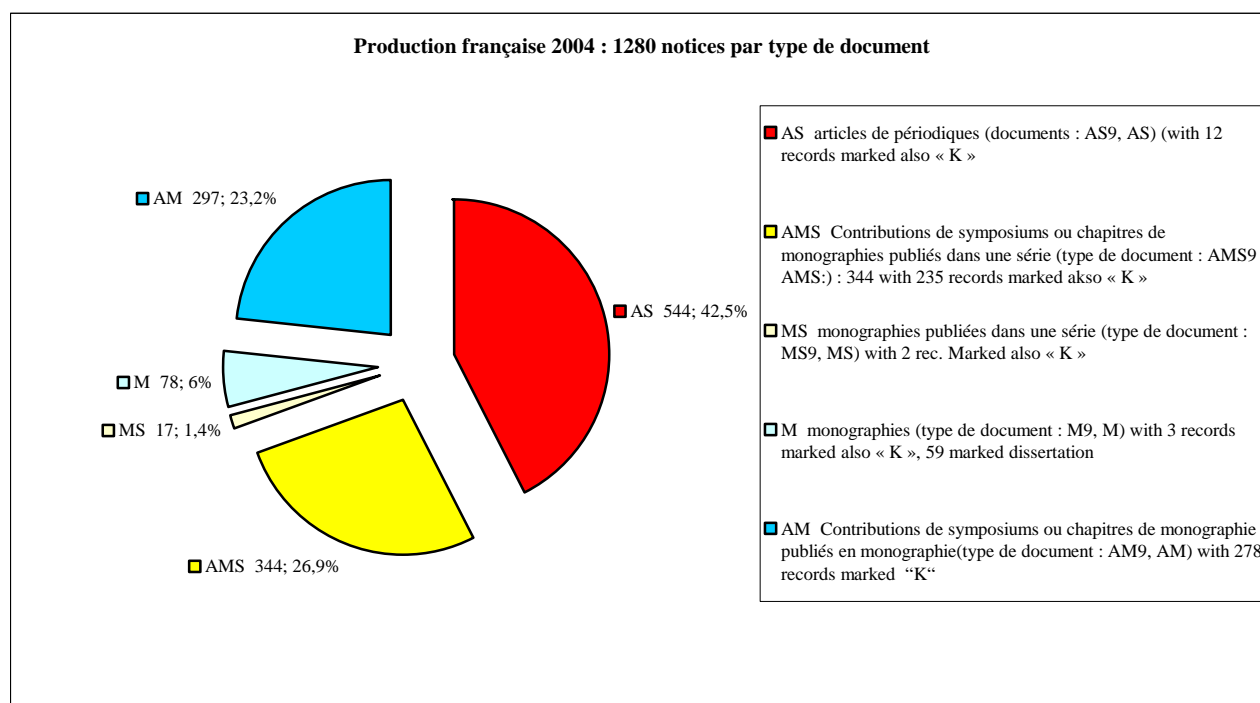
Also the amount of % is higher than 100% and the number of records appearing in the 3 journals is higher than the number sent to CSA because some records appear in many journals.

On the 1280 records sent to CSA in 2004 , 110 records (i.e. 8,6%) are classified in various journals, 53 records appear in the same time in ASFA 1 + ASFA 2, 41 records appear together ASFA 1 + ASFA 3, 18 records appear together in ASFA 2 + ASFA 3, 2 records only appear together in ASFA 1 + ASFA 2, ASFA 3 : And some records also appear in many scope classification of the same journal (X-Ref

The input of the French partner can be also presented by document type and is distributed as the following:

French ASFA input 2004 : Distribution according to the document type (FAO) - La production française 2004 par type de documents analysés :

	nombre de notices 2004	%
articles de périodiques (documents : AS9, AS) (with 12 records marked also « K »	544	42,5 %
contributions de symposiums ou chapitres de monographies publiés dans une série (type de document : AMS9 - AMS:) : 344 with 235 records marked also « K »	344	26,9 %
monographies publiées dans une série (type de document : MS9, MS) with 2 rec. Marked also « K »	17	1,4 %
monographies (type de document : M9, M) with 3 records marked also « K », 60 marked dissertation	78	6,0 %
contributions de symposiums ou chapitres de monographie publiés en monographie (type de document : AM9, AM) with 278 records marked also "K"	297	23,2 %
TOTAL Production 2004	1280	100 %



For example, among the 78 monographs (M9, M), we analyzed, in 2004, 59 documents listed under the heading « dissertation » by CSA (48 thesis and 11 others documents (DES, mémoires d'ingénieurs...) of various universities,

An other indication among the 1280 records (in 2004) : 528 records are indicated with the letter K (conference) (namely 12 records marked K in a input sheet AS Article Journal (we had not the symposium in its totality), 235 records marked K as papers of symposium in monographs published in a serial (input sheet AMS), 278 records which are papers of symposium in monographs published as a book (input sheet AM), 2 records marked K in Monograph published as Serial (input sheet MS).

The notion of records as papers of symposium in monographs published in a serial (input sheet AMS) is missing in the ASFA data base on CSA/ILLUMINA and it is a big problem because in these records there is a journal title and these records are not indicated as journals but only as book (i.e. rules of ASFA input – FAO when we choice this input sheet). If the scientists choice to view the records taking the choice of type of documents (taking only journals , they lose all records published with the indication conference and papers of monographs published in serial.

Many complaints of Ifremer researchers indicating to me that some serials (special numbers of serials dealing with symposium are missing because they select the notion “to view the type of document “journals” : these serials are in ASFA data base but under the heading book + conference, they do not find the information . It is very difficult and we must to explain this point during the training course.

Is it possible that CSA provides this indication of level of the input sheet AMS, MS, AM in a field of the structure ASFA/Illumina for example the field Publication Type

The totality of the French input statistics is detailed in the Annexes

After the loading of records (file 200507 – via FTP and coming from CSA) on the ASFA/ IFREMER Server (software BRS) there were 1003273 records in the ASFA database (update 200507). We must to load the last file, That will be done the next week . This explains the difference with in more some lost records !!!!!

On the Server CSA/Illumina/ASFA there is 1008086 records (update 200508) .

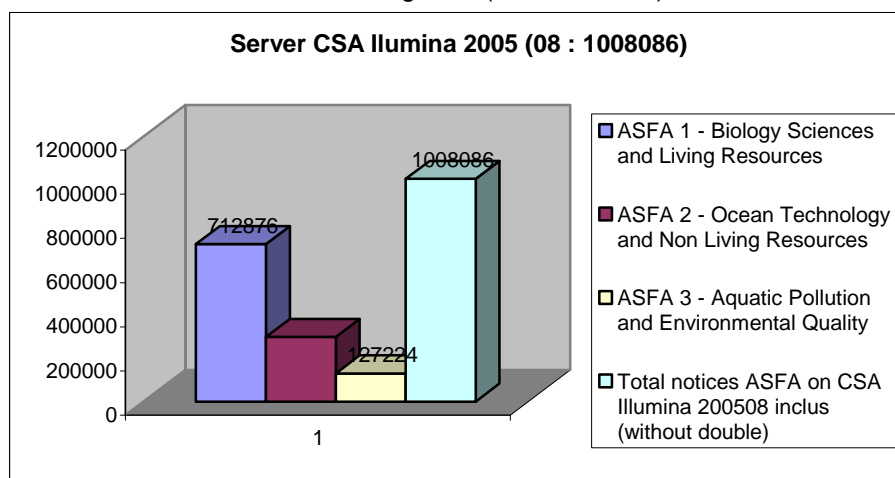
These 1008086 bibliographic records appear in the ASFA journals ASFA 1, ASFA 2, ASFA 3, journals which can be studied under the field « subfile » (ASFA 1, ASFA 2, ASFA 3 or the field “Classification” CL (Q1 Q2 Q5 or classification code supplied by FAO (ASFIS REFERENCE SERIES n°2, Rome 2001).

The study on the Server CSA/Illumina/ASFA (200508 update) via the field “Subfile” gives the following distribution :

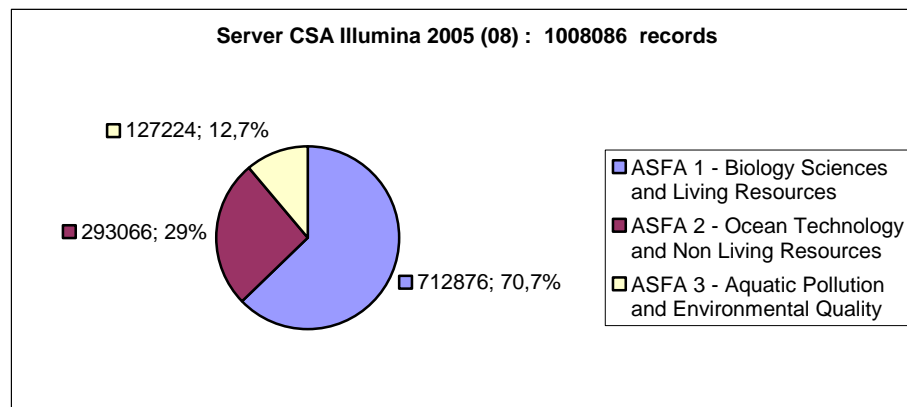
	nbre notices	%
ASFA 1 - Biology Sciences and Living Resources	712876	70,7 %
ASFA 2 - Ocean Technology and Non Living Resources	293066	29,0 %
ASFA 3 - Aquatic Pollution and Environmental Quality	127224	12,7 %
Total notices ASFA (Illumina) 200404 inclus (without double)	1008086	112,4 %

The repartition in % is 112,4 % because some records appear in many journals

- Some records appear in two journals or three journals, especially :
 - in ASFA 1 + ASFA 2 together (66466 records)
 - in ASFA 1 + ASFA 3 together, (45791 records)
 - in ASFA 2 + ASFA 3 together (18400 records)
 - in ASFA 1 + ASFA 2 + ASFA 3 together (5577 records)



Nombre total de notices ASFA sur Serveur CSA/Illumina/ASFA 2005 (08): **1008086** notices / Number of ASFA records on Server CSA/Illumina in 2005 (Aygust update) : **1008086 records**



4. Distribution list for complementary ASFA entitlements

In 2005, as minimum entitlement Ifremer Brest (Bibliothèque La Pérouse) receives :

- ASFA 1 + ASFA 3 which are sent to Ifremer Centre Nantes Unit Library specialised in Living Resources Aquaculture and Environment. We asked to CSA not to send neither ASFA 2 nor Marine biotechnology nor Aquaculture print.
- ASFA CD/ROM produced by CSA (not installed)
- Magnetic tape (files received every month via FTP in format ISO 2709 and installed from receipt by our software specialist Gilles CHATRY on our Ifremer ASFA server (BRS software with BRS/fusion and BRS NetAnswer (Intranet);
- ASFA via CSA Illumina (new interface CSA since January 2005) that we propose to all Ifremer centers or Ifremer stations via IP address indicated to CSA (25 locations - France and overseas). All Ifremer scientists use now the interface CSA/Illumina. The new software is very appreciated and the statistics provided by CSA show the use of this new tool since 2005 (annexe 4 or point 5)..

As additional entitlements : in 2005, the average of the French input is 1256 records (input 2004: 1280 records, input 2003:1254 rec., input 2002 : 1232 rec. and we hoped more than 3 CSA Illumina subscriptions as additional subscriptions to give , for the first time, the ASFA CSA Illumina access to our 3 better collaborating centers in 2004 (SHOM, Intechmer, INRA SCRIBE Rennes) but we hoped to preserve the access to the other old indexer Station biologique de Roscoff which used ASFA via CSA since 1999 and INRA St Pee which had CSA/ISD since 2001.

In fact, looking at the minutes of the ASFA meeting (i.e. Draft of the ASFA Advisory Board Meeting in Mar del Plata, 29 June to 2 July 2004, item 6.4 Asfa publishing Agreement p.7,), **we hoped to find a compromise with CSA, that CSA could remove this limit (barrier) of maximum 3 subscriptions as additional subscriptions and CSA agreed for the study of the French case** where there are many collaborating centers.

As already said at the last Board this limit of maximum 3 subscriptions as additional subscriptions (indicated in the ASFA publishing Agreement) is to few, does not encourage a collaborating center to increase his ASFA input and is a brake to keep or find new Collaborating Centres participating in ASFA input.

Also between January 05 and February 2005 we had many e-mails and discussions between Craig Emerson, and the marketing Responsibles of CSA in Europe (Stuart Cooper, Emma Dobson..) to remove this limit (barrier)

Fortunately CSA agreed to raise this limit and we warmly thank Craig for his intervention . As already said to Craig , in our e-mail dated 7 January 2005, to give the ASFA /CSA Illumina access to French collaborating centres, would be for us a deserved reward of every hour devoted to ASFA 's investment ((French ASFA input by these centres and by myself, and all many hours devoted to test the tool CSA Illumina and see when there are problems...And it is a recognition of my personal French work by CSA.

We obtained 5 access to CSA Illumina as additional entitlements (new access to SHOM, INTECHMER, INRA SCRIBE – and we could preserve the access to Station biologique de Roscoff and to INRA St Pee (this institute is also an Mixed UNIT between IFREMER/INRA. . The fact of removing these IP addresses at INRA St Pée would make that several researchers (scientists) of Ifremer would not have any more access to ASFA/CSA Illumina and it would be a pity).

Our Collaborating centre **MNHN** wishing to give the access of ASFA/CSA/Illumina to the all sites of MNHN **bought, in 2004 and in 2005, with the discount of 35%** as ASFA partners the access to Illumina **but is it possible to increase the discount rate on ASFA/CSA Illumina to a discount of 50 % in the Publishing Agreement (FAO/CSA)**. especially when this Collaborating centre is an excellent partner (184 records in 2004, already 280 records in September 2005) ?

It is necessary to known that, although our Country “France” is a developed country, the budget devoted to documentation is always poor , and we have difficulty to purchase the acces to many database. When a collaborating center works for the national partner; we would really appreciate offering to this collaborating center the access to CSA ASFA database. It would be better if , in the Publishing Agreement, CSA and FAO agreed a discount of 50% for the purchase of the CSA Illumina ASFA database by a national partner or by a collaborating centre,

5. Usefulness of ASFA products

The scientists of all Ifremer sites use now particularly the platform CSA Illumina and the ASFA data base via the WEB intranet of Ifremer / Bibliothèque la Pérouse (with this link , it is not necessary , for the scientists, to indicate CSA Ifremer user + CSA Ifremer password.). **However some scientists or myself use sometimes directly the CSA Illumina Server.**

This new CSA Illumina platform is very appreciated..

Very few scientists now use the ASFA Ifremer Server (with BRS/fusion software) : it is only the scientists who want to search the recent data downloaded monthly on the ASFA server with BRS/fusion on PC and who wish to download after the data on their own bibliographic software GESBIB (software Biblimer with the special format ASFATEL) . On the other hand this software BRS Fusion is always useful to me as the French ASFA manager to easily find the type of input sheet used in the ASFA input (level AS as journal article, level MS as monograph in a serial, level AMS -analytical monographic serial level) because this information does not appear in the CSA Illumina platform.

:

We know that the scientists of Ifremer search very much in ASFA products and think that ASFA is a very interesting and the essential database for the marine international scientific community.

For the users of our new library Bibliothèque La Pérouse, we give only, in the reading room, the access to ASFA via CSA Illumina with the direct link made on Intranet of the Bibliothèque La Pérouse giving access to multi bases as ASFA but also Current contents, Georef, FSTA, Pascal, Ecnlit that we have on the Ovid / Silver Platter platform.

ASFA prints are no more consulted by either Ifremer Brest nor other Ifremer centres except for library of Ifremer Nantes that always wants to consult ASFA printed Journals (ASFA1 + ASFA 3) that I send to the librarian.

In the Annex 4 you ‘ll find the statistics use of ASFA database supplied by CSA.

We can already provide some comments about these statistics which can be compared with the statistics provided by our software specialist of the library Bibliothèque La Pérouse .

In the Usage Report provided by CSA for Ifremer we find from Jan 2005 to Aug 2005 the following figures : 5554 signons, 68638 queries including 18504 queries on the database ASFA , 18106 queries on Oceanic Abstracts, 15904 queries on Recent References Related to Natural Sciences (New!), 15904 queries on Web Resources Related to Natural Sciences (New!) .

The important is to note the number of records captured : 101276 records (3483 records. as e-mail, 83713 records. as Save, 11655 records. as Print , 2725 records. as Alert.

If we wish to compare the statistics provided by CSA and by Ifremer (To connect ASFA on Host CSA/Illumina via Web Ifremer/Libray on Ifremer Intranet), we must to begin only in March 2005, date where our statistics system has been installed.

From March 2005 to 31 Aug 2005 the usage Report provided by CSA for Ifremer gives the following figures 3567 signons while our Internal statistics system via the connections on the Web Intranet of the Bibliothèque La Pérouse (BLP) provides 2979 signons.

How to explain this difference of 588 signons (connections) ?

We have Ifremer scientists and sometimes myself who sometimes are connected directly to the URL from CSA and use the user and password. They do not search directly via the Web of the library. Bibliothèque La Perouse (link made on Ifremer Intranet where it is no more necessary to indicate CSA ifremer user + CSA Ifremer password). Also these signon (connections) accesses are not given in our statistics. BUT this processing cannot be the only explanation : it is to be defined

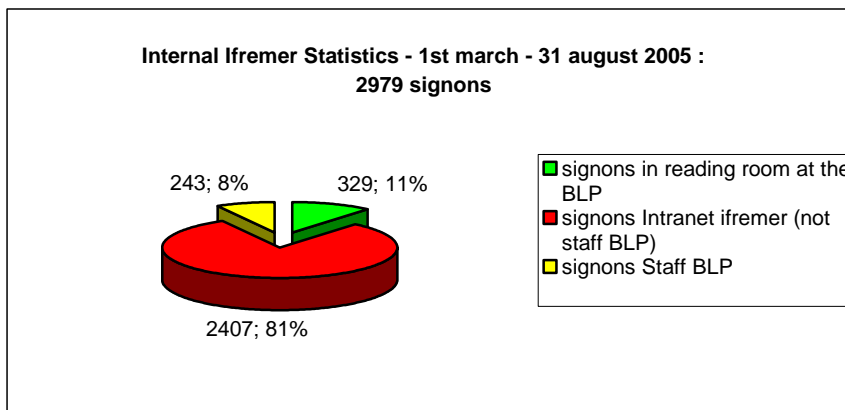
Is it possible to have more information on the usage reports provided by CSA ?

To see from which the difference comes, we would like to know if CSA could provide to our software specialist F. Merceur the list of connexion (IP + date) and F Merceur wish also to known if the automatic e-mail alert send to our end-users are included in this number?

For August, for exemple, CSA provides 367 Signons. It is surprising because the software we have developed to count the number of connections to the CSA server detects only 300 connexions.

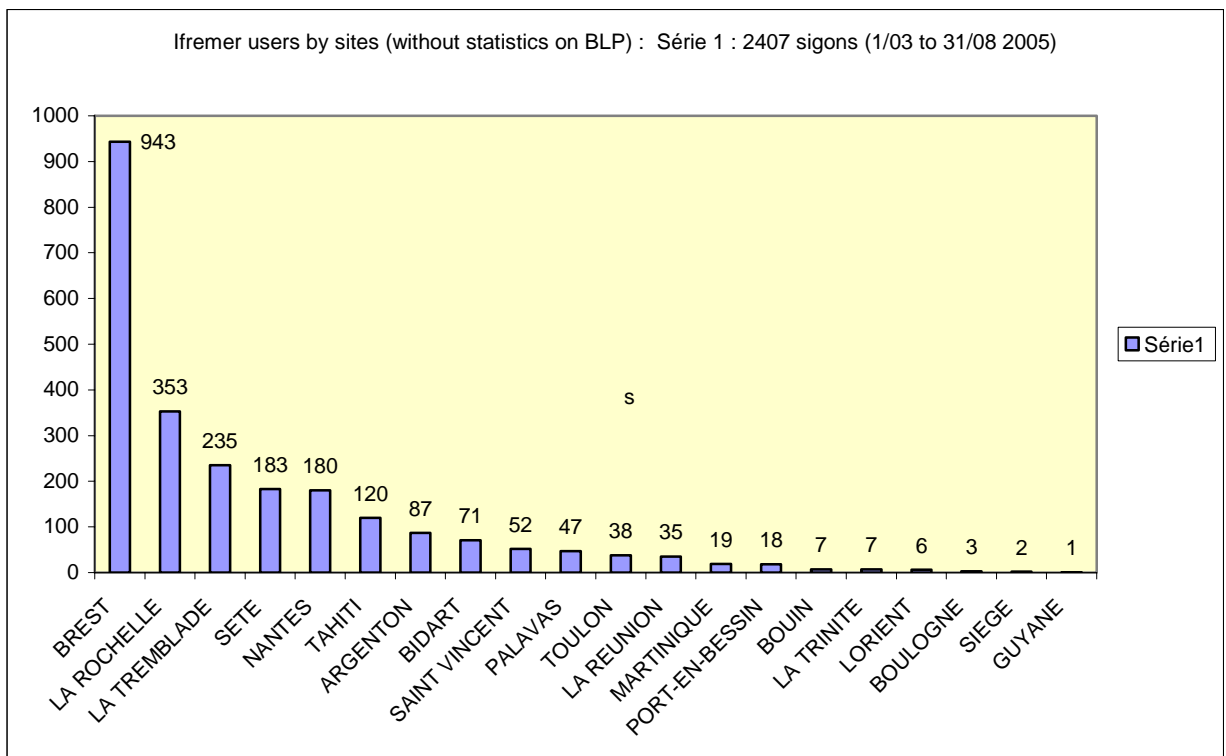
Our system dos not provide the information on records captured by format nor on the database name as CSA can provide its information but we obtain others information .

Our internal system indicates the type of signons (and location) : From 1st March to 31 August 2005 the figures are the following : the number of signons in the reading room of the library Bibliothèque La Pérouse (BLP) : 329 (by students, scientists of the University or Ifremer, other external users) , the number of signons on Intranet Ifremer (without the staff of the library) : 2407 signons by Ifremer researchers/scientists without the library BLP, the number of signons by the staff of the BLP : 243



A other presentation can be provided about the 2407 signons of Ifremer Intranet (without the users of the library BLP): We see that from 20 Ifremer sites the scientists use ASFA CSA Illumina platform :

Internal statistics March 2005 to 31 august 2005 : 2407 signons to CSA on Ifremer Intranet (without BLP)								
Centre/Station:	signons	%		signon	%	centre/station	signons	%
BREST	943	39,10	BIDART	71	3,00	BOUIN	7	0,30
LA ROCHELLE	353	14,60	SAINT VINCENT	52	2,10	LA TRINITE	7	0,30
LA TREMBLADE	235	9,70	PALAVAS	47	2,00	LORIENT	6	0,25
SETE	183	7,60	TOULON	38	1,60	BOULOGNE	3	0,12
NANTES	180	7,50	LA REUNION	35	1,50	SIEGE	2	0,10
TAHITI	120	5,00	MARTINIQUE	19	0,80	GUYANE	1	0,05
ARGENTON	87	3,60	PORT-EN-BESSIN	18	0,70			



Others users , customers of CSA :

In France several institutes and libraries of the Sea network are CSA customers. They have subscribed to the ASFA CSA Illumina (sometimes with others databases of CSA) in 2005 :

- Observatoire de Villefranche et Université de Nice (which bought the ASFA data since many year) choose , in 2005, the platform CSA Illumina , the price was to be discussed)
- For the others members of ASFA Consortium : there is a discount of 20% soit 6875 € (the catalogue price without discount is 8593 Euros):
 - Observatoire océanologique de Banyuls
 - Institut Océanographique de Paris et Monaco
 - Université d'Aix-Marseille 2
 - Université de Bretagne Sud (new user in 2005)
 - Université de la Rochelle
 - Université de Montpellier
- MNHN , ASFA Collaborating Centre bought ASFA for all MNHN sites with a discount rate of 35% i.e. 5557 €

6. Monitoring list Information

The French's serials monitoring list currently consists of 70 serial titles in 2005. As in 2000, 2003, there were, in 2005, many deleted titles (publication ceased or some titles no more analysed in ASFA according their lack of interest, or because there is only some exceptional analysis (however the article will be indexed but the serial title does not more appear in the official serial list):

In 2005, there are 8 titles deleted and 4 titles added whose one title was no more in our list but always in WWW-ISIS-ASFA. See . Annexe 2 : document Ifremer ASFA/2005/27-b).

There are several books, reports, thesis, symposia analyzed also in the input.

The French scientists appreciate to have now the serial titles from two presentations (full title and abbreviated title)..

7. Problems : new functionalities in the input product, improvement for a better quality of the output products

About the Input product i.e. the WWW-ISIS-ASFA software :

* **By twice, we had big problems with the software, error message, not possible to create records or no possibility to entry in the menu data Entry**, we tried many solutions but it was **necessary to have the assistance e-mail of Luciana Lombardi (FAO)** Now all functions are operational on WWW-ISIS-ASFA.

* **Yet a light problem with the program ISIS** : we can import the files.iso of our collaborating centres , we can activate the procedure inverted file services, the procedure Full inverted file generation but after the phrase Full inverted file generation completed and ESC and X to exit , there is always the mistake "erreur d'allocation de mémoire , impossible de charger COMMAND.COM systeme arête , we must to use a special procedure to exit and appear a screen End of ISIS programme – we reply Stop now .Fortunately , after this procedure , the program ASFA Data Entry is operational.

About ASFA input procedures , *it would be necessary to simplify the ASFA input rules to speed up data entry , that the preparation of records becomes easier. is it possible to avoid the special conventions as italics for the taxonomic terms ?...* This presentation is only for the ASFA journals (paper version) because in CSA/Illumina we do not have this presentation

It would be necessary to avoid the italics, subscript and superscript using the standard HTML codes i.e. italics = `<i>.....</i>`, subscript = `_{.....}`, superscript = `^{.....}`

What is the strategy for other database? For example in AGRIS ????? Which are the rules ?

About the indexing coverage

Always complaints of Ifremer scientists concerning slow indexing coverage for some papers submitted in the international or national journals which are analysed theoretically cover to cover . But I am announcing you these complaints while specifying well that the French partner is also badly placed to make reproaches to all ASFA members because our French network has some delays in the serials not analysed cover to cover, delay due to the problem of input staff!!!!!!

ABOUT missing records in CSA / Illumna/ ASFA :

We knew that some records realized between 1992 – 1995 were always missing in CSA /Illumina as indicated already in CSA/IDS but it was very difficult to control because, for this period, CSA had not the field Input Centre number called « TR »

This verification and checking of the partner's input ask always a great deal of time for the old years and in 2004 we decided to stop the checking.

It is thanks to a Ifremer scientist who announced to me that his paper published in the serial title Ann. Inst. Oceanogr. V69 n 1 was missing that we discovered that 15 records among 34 records sent to

CSA in 1994 in the batch 9 (input sheet IF94/321-354) were missing in the ASFA data base. We indicated this problem to Vicki Soto. But after a checking by serial title, number of this serial, contents page of this serial sent to Vicki, we discovered unfortunately that these records are really missing in ASFA database (mail and fax April 2005).

The copy of these original worksheets (paper version) was also missing. *Also we decided to prepare again the scanning of the data (first original page of these 15 articles) and our collaborating center INRA SCRIBE helped to me to input these records again with WWW-ISIS-ASFA.*

Others records on this period are missing but without the field TR (input center) in CSA (ASFA) it is, in accordance with the French expression, to look for a needle in a haystack.

Fortunately no more problem input in the recent years – we can verify regularly to each update and to claim after 2-3 updates if some French inputted records are missing. But there is no problem in 2004 neither in 2005 until now..

About the CSA/Illumina platform ,

We will start to say to the Representative of CSA (Craig Emerson and Vicki Soto) that this new platform is very appreciated by the majority of the French users,

It was very interesting to test this new tool between last December and February 2005 : We had many exchanges , many e-mails or phone with the French Technical Responsible Françoise Devillard, with Soplje Panagi, with the CSA Support directly (A Mather, ...), to indicate the problems . *The majority of these problems were solved , many functionalities already obtained.*

*** A new function very appreciated** by Ifremer information specialists , Ifremer scientists and the other French users of CSA customers is, in the new platform, the **possibility to combine searches using the operator « not »** but it would be **necessary to give an example in the phrase “search Tips :** you indicate : (#3 or #2) and new terms **Why not a second example : #3 not #2**

(nothing indicates in your example la possibility to use the operator “not”

*** Other appreciated possibility : in Advanced Search : to add row or to remove row**

*** appreciated also the possibility to create a custom format**

*** Recently we saw that for some records , the publication year does not appear in the field Source for a serial title .** If the scientist uses the field Source to indicate the publication year (and it is generally this process), the document will be missing , To avoid this problem , it is to search on everywhere field but there is more noise in the results of the searching

Some remarks sent in January, February 2005 :

- :about the translation in French of 2 fields champ ED (in English, Editor) is in French ED but with the term Editeur scientifique the field PB (in French Editeur = Maison d'Edition)
- We asked to change in the French translation the name of the format citation (en français) , and to use the expression (la citation, résumé et descripteurs) ; now in English there is “Short format”
- *About the viewing of the list of results in the procedure Edit Search,* we asked to Françoise Devillard (CSA France) that, *when a user uses the button View Record, the field OT (title original other than English title) is appearing immediately after the field TI (English title) : the following day, all functioned correctly*
- *About the full text with some publishers :* we indicated that, for our use, 24 publishers were missing and that we would like to offer a link to all the full text journals that we have a subscription , all the editors did not appear in the CSA administration Web Site . We had a reply with amather@csa.com . Our list was : American Chemical Society , American Institute of Physics, American Meteorological Society , American society for microbiology, American Society for Nutrition Science, BRILL , CABI , Cambridge univ. Press, De Gruyter, EDP Sciences, Estuaries Research Federation, Genetics society of America, Geological society of London, Haworth , Inter-Research , IWA, NRC, Royal Society of London, Society for General Microbiology, Society of Exploration Geophysicists, Taylor and Francis. We add also 3 others titles : American Association of Petroleum Geologists, Canadian remote sensing society, Estuaries Research Federation

With the e-mail of CSA on 9 Aug 2005 announcing the recent enhancements to the CSA Illumina platform , our software specialist Fredric Merceur will use the procedures indicated to active these links . If some problems after, we 'll contact again Amy Mather.

Thank you with all the team of CSA which we very often disturb

But we request again the other functionalities requested by the French ASFA users

- **About to sort** : in the system there are only two possibilities : to sort by most recent first and by relevancy ranch What is the most recent first ? (update of the base or publication year ???)
 - o we would like **to sort by author** (by 1er author of the article – a wish of users)
 - o we would like **to sort by the information input centre** (field TR in CSA/Illumina) with the **possibility decreasing or increasing**. ie by the number of the record (decreasing or increasing) appearing in a sequential range. This function would be very interesting to check **the annual centre input**. The field « TR » in CSA/Illumina is the alone mean to check (verify) the input of the partner.
- **To have the possibility to search simultaneously by author or editor** (in France éditeur scientifique)

The users of the database do not known our rules of the ASFA input , sometimes we indicated an author as (Ed.) and in the ASFA database via CSA/Illumina the name of this author can be found with the searching field Editor and not the Author field ... If we can search simultaneously by author or by editor , there is no more problems

On 27 september we see **a new change given in the viewing of the list of results after the procedure Edit Search** - We now see that the field Corporate author appears at this level when it exists. It is right

But when a document is not in English but for example in French it would be also useful to see the field original title (OT) under the field English at this level in the viewing of the list of results .

This information would be useful when a user wish to use after the button (Loan , prêt inter) – Very often the data indicated in the format loan are not sufficient if the record is a document inputted at the level AM, AMS.

An other problem : To look this record obtained after a search : in the viewing list:

[World Ocean Database 2001: An Ocean Profile-Plankton Database for Ocean and Climate-System Research \(Slide of the oral presentation\). Plenary session Levitus, S; Fichaut, M, International marine data and information systems conference \(Slide presentation\). vp. 2005.](#)
 No bstract.
[View Record](#) | [Pret-Inter](#)

but it is difficult to find the document with the information of the format VIEWING LIST *There is not enough information for the menu Loan . In this document the more information are in the field "Note " and the field Conferenceand it is necessary to have the full format to find the location*

Field Notes : Physical medium : Internet, http://www.ifremer.fr/imdis/session_plenary/LEVITUS_WOD2001.ppt

Field Conference IMDIS Conference, Brest (France), 31 May-2 Jun 2005

With the input centre number : IF0501026 the librarian can to search again in the database and to have more information to find the document and to see that it appears on the Wef of Ifremer

In conclusion : sometimes , not enough information in the Viewing list format !

We shall finish our complaints, about the platform CSA Illumina (ASFA), in speaking about the URL for which we would wish to have an operational Web link in the case of full text dissertation, of contributions of proceedings (when this information appear in the input sheet).

8. Development, user services, training activities and future

Publicity is regularly made for ASFA system in the course of symposium or workshops held by Ifremer scientists but also by the others French scientists specialised in oceanology.... and/or by information specialists of the French indexing ASFA Network.

As every year, in January 2005, Ifremer organised Aquaculture training. More than 15 schools participated to this session and during this week, students and teachers (200 persons) consulted ASFA database. We'd like to insist on the training of students who come to our library during the year.

Many students of Univ. Paris 6 (Univ. Jussieu) or students of others marine schools use the ASFA database in the French ASFA collaborating indexing centres, via CSA/Illumina. MNHN, Station biologique de Roscoff regularly show the ASFA database to users of their library or Documentation centre.

All the users of the Bibliothèque La Pérouse are students, scientists but also the professional of aquaculture, veterinary, medicine and aquatic animals, physics, chemistry, pollution, engineering, marine technology....geology. Regularly training courses are organized for these users and all electronic resources available to our Documentation Centre are presented : ASFA on CSA Illumina, OVID/SilverPlatter platform with others databases, electronic reviews....

Ifremer keep the responsibility of French ASFA network and the database ASFA is installed at Bibliothèque La Pérouse (BLP) , Centre de Documentation sur la mer (merging of the Library of Ifremer Brest, Marine sciences section of Brest University Library and Library of I.R.D (specialised in marine tropical oceanography (biology, fisheries, geosciences, physics, ...)).

As , already said at the last ASFA Board, now, ASFA database is circulating to all Ifremer scientists but also to all scientists or students of Brest University located in IUEM (Institut Universitaire Européen de la Mer, created and located near Ifremer Brest) when this new scientific population comes to Bibliothèque La Pérouse .

The main wish of Ifremer is that the ASFA database would be known and should be circulated to all the French users specialised in marine environment, brackish water or freshwater environment (with Ifremer ASFA server or with CSA Internet Journal Service.

A presentation of the new CSA/Illumina platform has been realized by the French Technical Responsible of CSA, Françoise Devillard, at our annual Workshop “ 22 ème Reunion des Bibliothécaires et Documentalistes des Sciences de la Mer et des Eaux, Group OMER “ on 10-11 March 2005 in Banyuls-sur-Mer : more than 25 persons (librarians or information specialists) and Researchers and Students of the Observatoire océanologique of Banyuls participated to this official presentation all the morning 11 March.

As you see, Ifremer, responsible of the French indexing ASFA Network, assumes the promotion of ASFA via this new CSA Illumina platform and training courses are already planned for 2005-2006.

Partenaires	2004	2003	2002	2001	2000	1999	1998	1997	1996	1995	1994	1993	1992	1991	1990	1989	1988	1987	1986	1985	1984	1983	1982
Ifremer	433	364	554	405	844	766	898	742	805	865	520	642	977	643	519	413	837	967	902	99	747		779
EPSHOM/SHOM	232	312	227	167	254	238																	
INTECHMER/CNAM	238	256	149	183	4																		
INRA - St Pée	16	49	50	51	77	18	37	219	231	233	215	169	101	117	124	182	243	265	353	308	505		224
INRA-SCRIBE/Rennes	104	122	35	26																			
MNHN	184	65	135	276	223	209	164	140	148	172	136	61	101	86	128	265	23	97	89	208	59		87
Station Biologique de Roscoff	58	86	41	60	66	100	108	44	44														
IBBA/Caen (en 2002)		0	9																				
Cemagref	15	0	32	0	0	143	122	48	45	0	65	68	34	65	37	0	17	13	0				
I.R.D. (ex. ORSTOM)		0	0	0	67	167	160	113	29	34	118	85	0	82	25	126	64	22					
ENSAR				7	115	127	101	100	73														
Institut Océanographique										22	65	86	69	53	81	83	137	137	53				
CREMA											2	0	0	32	0	0	0	7	0				
CERS											0	0	24	22	36	72	69	91	79	69	69		65
Total	1280	1254	1232	1175	1650	1768	1590	1406	1375	1326	1121	1111	1306	1100	950	1141	1390	1599	1476	615	1311	1149	1166

EPSHOM/SHOM..... Joël Grall

INTECHMER/CNAM..... Maguy Guary

INRA-SCRIBE Rennes Agnès Girard

MNHN Ichtyologie Paris Mathieu Andro en 2004 - Véronique Roy (avril 2003 à Déc. 2003) - Monique Margout (jusqu'en sept. 2002),

Station Biologique Roscoff.... Maryse Collin

Cemagref Marie-Pierre Maleyran (Bordeaux) INRA St Pee-sur-Nivelle Dominique Girod-Chanzy

IRD Centre de Bretagne : retrait en 2004 // IBBA de Caen : retrait en 2004 // ENSAR (retrait en 2002)

IFREMER	2004	2003	2002	2001	2000	1999	1998	1997	1996	1995	1994	1993	1992	1991
Jacqueline Prod'homme	392	354	441	403	447	438	443	496	468	420	216	338	443	315
François Cabane	41	10	113	2	130	40	67	18	86	206	110	35	100	151
Annick Salaün					38	37	162	76	158	234	143	269	434	177
Véronique Gautier						50	58		93	5				
Danièle Lemerrier					33	97	39	5						
Fanny Barbier						72	40							
CDD ou stagiaires					196	32	89	147			51			
Total Ifremer	433	364	554	405	844	766	898	742	805	865	520	642	977	643

LISTE DES REVUES ANALYSEES PAR LE RESEAU FRANCAIS ASFA/2005/27- Annex-2

titres : Maj Septembre 2005 – ASFA 2005-27b

70 TITRES

Actes de colloques. Institut Français de Recherche pour l'Exploitation de la Mer. Brest
Actes Colloq. IFREMER CORE JOURNAL
ISSN : 0761-3962
IF / Ifremer

Alytes (add)
Alytes ISSN 0753-4973
IF / MNHN

Annales de la Société des Sciences naturelles de la Charente-Maritime. La Rochelle
Ann. Soc. Sci. Nat. Charente-Marit. ISSN : 0373-9929
IF / Ifremer (depuis 2001 avant INRA)

Annales de limnologie / International Journal of Limnologie. Toulouse
Ann. Limnol. / Int. J. Limnol. ISSN :0003-4088 (idem as before) but, new title in 2002
IF / Ifremer in 2004 (before Cemagref until 2001 included as analysis)

Annales geophysicae. Atmospheres, hydrospheres and space sciences. Paris
Ann. Geophys. (Atmos. Hydros. Space Sci.) ISSN : 0992-7689
IF / Ifremer

Annales hydrographiques. 6ème série. Paris
(Modif. 8/5/01 CORE
Ann. Hydrogr. (5ème Sér.) ISSN : 0373-3629
IF / SHOM

Annuaire du droit de la mer.
Annu. Droit Mer
IF / Ifremer (voir BU à démarrer en 2002 avec rétroactif 1998 -->)

Aquatic living resources/Ressources vivantes aquatiques. Paris CORE
Aquat. Living Resour./Ressour. Vivantes Aquat.
ISSN : 0990-7440
IF / Ifremer

Biofutur. Paris
Biofutur ISSN 0294-3506
IF / Intechmer (title added again in 2003 (April)

Bilans et prospectives IFREMER. Plouzané
CORE JOURNAL (COVER TO COVER)
Bilans Prospect. IFREMER ISSN : 1279-8339
IF / Ifremer

Bulletin de l'Association de Géographes français. Paris
Bull. Assoc. Géogr. Fr. ISSN : 0004-5322
IF Ifremer

Bulletin de l'Institut océanographique, Monaco. Monaco CORE JOURNAL (Cover to cover)
Bull. Inst. Océanogr. Monaco ISSN : 0304-5722
IF / Ifremer P 298

Bulletin de la Société géologique de France. Paris
Bull. Soc. Géol. Fr. ISSN : 0037-9409
IF / SHOM

Bulletin du Centre de Recherches Elf Exploration Production. Pau
Bull. Cent. Rech. Elf Explor. Prod. ISSN : 1279-8215
IF / Ifremer P 287

Bulletin français de la pêche et de la pisciculture. Paris Core journal
Bull. Fr. Pêche Piscic. ISSN : 0767-2861
IF / INRA SCRIBE since 2004

Bulletin mensuel de la Société Linnéenne de Lyon. Lyon
Bull. Mens. Soc. Linn. Lyon ISSN : 0366-1326
IF / INRA SCRIBE in 2005

Cahiers d'éthologie fondamentale et appliquée, animale et humaine. Liège
Cah. Ethol. Fondam. Appl. Anim. Hum. ISSN : 0771-0305
IF / INRA SCRIBE in 2005

Cahiers d'éthologie fondamentale et appliquée, animale et humaine. Collection Enquêtes et dossiers. Liège
Cah. Ethol. Fondam. Appl. Anim. Hum. (Collect Enquêtes Dossiers) ISSN : 0771-0305
IF / INRA / SCRIBE in 2005

Cahiers de biologie marine. Paris COVER TO COVER
Cah. Biol. Mar. ISSN : 0007-9723
IF / Station Biologique de Roscoff

CIESM Workshop Series
CIESM Workshop Sér. ISSN 1563-2727
IF / Intechmer

Colloques et séminaires. Institut de Recherche pour le Développement. Paris
Colloq. Sémin. Inst. Rech. Dév. ISSN : 0767-2896
IF / Ifremer since 2003 before IRD

Comptes Rendus Biologies, Paris (new title in 2002)
C. R. Biol. ISSN : 1631-0691
IF / INRA - SCRIBE

Comptes Rendus Chimie, Paris (new title in 2002)
C. R. Chim. ISSN : 1631-0748
IF / Ifremer

Comptes Rendus Géoscience, Paris (new title in 2002)
C. R. Géosci. ISSN : 1631-0713
IF / Ifremer

Comptes Rendus Mécanique, Paris (new title in 2002)
C. R. Méc. ISSN : 1631-0721
IF / Ifremer

Conventions. Sciences de la mer. Biologie marine. Centre de Nouméa, ORSTOM. Noumea
Conv. Sci. Mer Biol. Mar. Cent. Nouméa ORSTOM
IF / Ifremer before IRD

Conventions. Sciences de la mer. Océanographie physique. Centre de Nouméa, ORSTOM. Noumea
Conv. Sci. Mer Océanogr. Phys. Cent. Nouméa ORSTOM
IF / Ifremer before IRD

Cryptogamie: algologie. Paris
Cryptogamie: Algol. ISSN : 0181-1568 (change of ISSN 2001-2002)
IF / MNHN

Cybiuim. Paris
Cybiuim ISSN : 0399-0974
IF / MNHN

Document scientifique et technique. Centre de Bretagne, IRD. Plouzané
Doc. Sci. Tech. Cent. Bretagne IRD
IF / Ifremer in 2004 before IRD

Droit maritime français. Paris
Droit Marit. Fr. ISSN : 0012-642X
IF / Ifremer (voir CEDEM ou BU pour indexation)

Engins et techniques de pêche Ifremer, Plouzané
Engins Tech. Pêche Ifremer
ISSN 1762-7400
IF / Ifremer

Faune de Madagascar. Paris
Faune Madagas. ISSN : 0428-0709
IF / MNHN in 2003 (before IRD)

Faune et flore tropicales. Paris
Faune Flore Trop. ISSN 1286-4994
IF / MNHN in 2002 (before IRD)

Geodiversitas. Paris
Geodiversitas ISSN : 1280-9659
IF / MNHN

Géologie méditerranéenne. Marseille to ask to publisher - ????
Géol. Méditerr. ISSN : 0397-2844
IF / Ifremer P 960/ 3

Haliotis. Paris
Haliotis ISSN : 0397-765X
IF / MNHN

Houille blanche. Grenoble
Houille Blanche
IF / Ifremer (see F.Cabane) ISSN : 0018-6368

Hydroécologie appliquée. Paris
Hydroécol. Appl. ISSN : 1147-9213
IF / Ifremer P 640

Ichthyophysiologicala acta. Lyon
Ichthyophysiol. Acta
IF / INRA

Ingénieries: eau, agriculture, territoires. Antony
Ing. Eau Agric. Territ. ISSN : 1264-9147
IF / Cemagref

Journal de recherche océanographique. Paris
CORE JOURNAL
J. Rech. Océanogr. ISSN : 0397-5347
IF / SHOM

Journal européen d'hydrologie/European journal of water quality. Paris
J. Eur. Hydrol./Eur. J. Water Qual. ISSN : 1335-9581
IF / Ifremer

Marine life. Marseille CORE JOURNAL
Mar. Life ISSN : 1168-3430
IF / Ifremer

Mémoires de l'Institut océanographique, Monaco.
Monaco CORE JOURNAL
Mém. Inst. Océanogr. Monaco ISSN : 0304-5714
IF / Ifremer P 297

Mémoires du Muséum national d'Histoire naturelle (France). Paris
Mém. Mus. Natl. Hist. Nat. (France) ISSN : 1243-4442
IF / MNHN

Mésogée
Mésogée ISSN : 0398-2106
IF / Ifremer

Methodes d'Analyse en Milieu Marin IFREMER Brest CORE JOURNAL
Methodes Anal. Milieu Mar. IFREMER IS :ISSN 1637-1844
IF / Ifremer new title

Met-mar. Boulogne-Billancourt
Met-Mar ISSN : 0222-5123
IF / Ifremer P.469/1

Météorologie. 8e série. Paris
Météorologie (8e Sér.) ISSN : 0026-1181
IF / Ifremer P 466

Norois. Poitiers
Norois ISSN : 0029-182X
IF / Ifremer P. 642

Notes techniques. Sciences de la mer.
Océanographie physique. Centre de Nouméa, ORSTOM. Noumea
Notes Tech. Sci. Mer Océanogr. Phys. Cent.
Nouméa ORSTOM
IF / IRD

Océanis. Série de documents océanographiques.
Paris CORE JOURNAL
Océanis (Doc. Océanogr.) ISSN : 0182-0745
IF / Ifremer P 535

Patrimoines Naturels
Patrim. Nat. ISSN : 1281-6213 (verified on
2/07/03)
IF/MNHN

Penn ar bed. Brest
Penn ar Bed ISSN : 0553-4992
IF / Ifremer

Publications du Département d'Halieutique, Ecole nationale supérieure agronomique de Rennes.
Rennes
Publ. Dép. Halieut. Ec. Natl. Supér. Agron. Rennes
IF / INRA

Rapports. Commission internationale pour la Protection des Eaux du Léman contre la Pollution, Lausanne (add again)
Rapp. Comm. Int. Prot. Eaux Léman Contre Pollut., ISSN: 1010-8432:
IF / INRA SCRIBE received again a new number dated 2004 (add again but is always in WWW-ISIS –ASFA serials list)

Rapports de missions. Sciences de la mer. Biologie marine. Centre de Nouméa, ORSTOM
Rapp. Missions Sci. Mer Biol. Mar. Cent. Nouméa
ORSTOM IF/IRD voir Ifremer

Repères océan. IFREMER. Brest CORE JOURNAL
Repères Océan ISSN 1240-1153
IF / Ifremer

Reproduction Nutrition Development (add)
Reprod. Nutr. Dev. ISSN 0926-5287
IF / INRA SCRIBE new for French Network

Ressources de la Mer . Ifremer. Brest CORE JOURNAL
Ressour. Mer Ifremer ISSN : 0986-3907
IF / Ifremer

Revue de médecine vétérinaire . Toulouse
Rev. Méd. Vét. ISSN 0035-1555
IF / INRA SCRIBE (new title analysed in 2003)

Revue des sciences de l'eau/ journal of water science. Paris
Rev. Sci. Eau/J. Water Sci. ISSN : 0992-7158
IF / Cemagref

Revue Française d'Histotechnologie
Rev. Fr. Histotechnol. :ISSN : 0997-6434
IF / INRA SCRIBE new title in 2003

Revue générale du froid. Paris
Rev. Gén. Froid ISSN : 0755-7868
IF / Ifremer (before Cemagref)

Revue maritime. Paris
Rev. Marit.
IF / Ifremer P 73

Revue technique du Centre d'Etudes Techniques Maritimes et Fluviales . Bonneuil sur Marne
Rev. Tech. CETMEF ISSN : 1164-6799
IF / Ifremer

Travaux scientifiques du Parc national de Port-Cros. Hyères
Trav. Sci. Parc Natl. Port-Cros ISSN : 0241-8231
IF / MNHN

Vie et milieu. Paris
Vie Milieu ISSN 0240-8759
IF / Station biologique de Roscoff

Zoosystema. Paris
Zoosystema ISSN : 1280-9551
IF / MNHN

TO DELETE for the BOARD 2005-(Sep)

Abysses. Monaco (Abysses ISSN : 1017-4907)
IF/ Ifremer publication ceased

Annales de l'Institut océanographique, Paris.
Nouvelle série. Paris
Ann. Inst. Océanogr. Paris (Nouv. Sér.) ISSN : 0078-9682 publication ceased with v 74 dated 1998
IF / Ifremer P 1226

Bulletin de médecine subaquatique et hyperbare. Marseille
Bull. Méd. Subaquat. Hyperb. ISSN : 1248-2846 IF / Ifremer Ifremer does not renew the subscription . Receipt stopped with v11 n1 2001

To delete (end)

Bulletin statistique des pêches. Centre national des sciences halieutiques de Boussoura.

Conakry

Bull. Stat. Pêches Cent. Natl. Sci. Halieut. Boussoura
IF / IRD publication ceased

Document scientifique. Centre national des sciences halieutiques de Boussoura. Conakry

Doc. Sci. Cent. Natl. Sci. Halieut. Boussoura
IF / IRD publication ceased

Oceanologica acta. Paris CORE JOURNAL

Oceanol. Acta ISSN : 0399-1784
IF / Ifremer publication ceased

Océanorama. Institut océanographique Paul Ricard. Marseille

Océanorama Inst. Oceanogr. Paul Ricard ISSN :
0243-6663

IF / Ifremer publication ceased

Villes et ports/Cities and ports. Le Havre

Villes Ports/Cities Ports

ISSN : 1018-6735

IF/ Ifremer not enough interesting for ASFA
(not renewed subscription)

ANNEX 3 - Document IFREMER

RESEAU FRANCAIS ASFA

Composition

Fichier "ADRPARF.doc" maj. le 20 septembre 2005 par J. Prod'homme

8 membres : IFREMER
MNHN - Lab. Ichtyologie (Paris)
SHOM (EPSHOM Brest)
INTECHMER/CNAM (Cherbourg)
INRA SCRIBE (Rennes)
STATION BIOLOGIQUE de Roscoff
CEMAGREF (Bordeaux)
INRA St Pée)

(8 membres et 8 personnes en septembre 2005)

IFREMER

Institut Français de la Recherche pour l'Exploitation de la Mer (IFREMER)
<http://www.ifremer.fr>

Jacqueline Prod'homme
IFREMER Centre de Brest
SDB / Bibliothèque La Pérouse (BLP)
15 rue Dumont d'Urville, BP 70 29280 Plouzané cedex - France
Tel: 02 98 49 88 71 Fax: 02 98 22 45 86
e-mail : jprodhom@ifremer.fr ou Jacqueline.Prodhomme@ifremer.fr

François Cabane
IFREMER/Centre de Brest Environnement - Littoral
BP 70 29280 Plouzané (France) Tel.: 02 98 22 43 64 Fax : 02 98 22 45 48
e-mail : Francois.Cabane@ifremer.fr

et pour l'informatique (service non comptabilisé dans l'effectif de production)

Gilles Chatry
IFREMER Centre de Brest Service de la Documentation et des Bibliothèques -- SDB
Informatique Documentaire B.P. 70 29280 Plouzané Cedex -France
Tél : 0298498870 / 8885 Fax : 0298224586 e-mail : Gilles.Chatry@ifremer.fr (non comptabilisé dans les indexeurs)

CEMAGREF

<http://www.cemagref.fr>
Marie Pierre Maleyran
Cemagref Bordeaux - Documentation
50 avenue de Verdun 33612 Cestas cedex - France
tel: 05 57 89 08 18 Fax: 05 57 89 08 01
e-mail : marie-pierre.maleyran@bordeaux.cemagref.fr

INTECHMER/CNAM

Institut National des Sciences et Techniques de la Mer/
Conservatoire National des Arts et Métiers

<http://www.intechmer.cnam.fr>

Maguy Guary

(Documentation & Relations publiques)

INTECHMER/CNAM

B.P. 324 50103 CHERBOURG CEDEX

Tél. : (33) 02 33 88 73 40 Fax : (33) 02 33 88 73 39

e-mail : mguary@intechmer.cnam.fr

INRA

Institut National de la Recherche Agronomique (INRA)

<http://www.rennes.inra.fr/scribe/>

<http://www.st-pee.inra.fr>

Agnès Girard

INRA - Documentation SCRIBE

Station Commune de Recherche en Ichtyologie Biodiversité et Environnement

Campus de Beaulieu 35042 Rennes Cedex Tel : 02 23 48 50 06

e-mail : agirard@beaulieu.rennes.inra.fr

INRA - Station d'Hydrobiologie (nobody in 2005)

Documentation

BP 3 64310 Saint-Pee-sur-Nivelle - France

tel. (33) 05 59 51 59 54 fax. (33) 05 59 54 51 52

MUSEUM

Muséum National d'Histoire Naturelle. (MNHN)

<http://www.mnhn.fr>

Museum National d'Histoire Naturelle. MNHN

Ichtyologie - Bibliothèque

Mathieu Andro

43 rue Cuvier, Case postale 26, 75005 Paris , France

Tel:33 - 01 40 79 37 46 Fax:33 - 01 40 79 37 71 e-mail

e-mail : andro@mnhn.fr

SHOM/EPHOM

Service Hydrographique et Océanographique de la Marine,

Etablissement Principal du SHOM

<http://www.shom.fr>

Joel Grall

13 rue de Chatellier, BP 30316, 29603 Brest Cedex - France

tel (33) 02 98 37 78 86

e-mail : grall@shom.fr

STATION BIOLOGIQUE DE ROSCOFF

<http://www.sb-roscoff.fr>

Maryse Collin

Station Biologique CNRS, UPMC, INSU

Service Documentation & Communication Scientifiques

BP 74 29682 Roscoff cedex - France

tel : 02.98.29.23.04 e-mail : mcollin@sb-roscoff.fr fax : 02.98.29.23.24

Disengagement of 3 partners : ENSAR in 2002, IRD and IBBA in 2004.

Document IFREMER ASFA/2005/27d – Board 2005 (Rome) – Annexe 4

CSA Illumina

Usage Report for user ifreb - Name: Jacqueline Prodhomme
Organization: Ifremer SDP Brest Service
 All Servers - From Jan 2005 To Aug 2005

Report by Month From Jan 2005 To Aug 2005

Signons = the number of times a username and password were used to access CSA Illumina.
Searches = number of searches submitted by persons accessing with a username and password.
Queries = total number of times databases were queried.

Event Type	Jan-2005	Feb-2005	Mar-2005	Apr-2005	May-2005	Jun-2005	Jul-2005	Aug-2005	Total
Query	8894	12012	9558	9885	9865	9005	5935	3484	68638
Search	3803	3289	2521	2474	2467	2261	1488	871	19174
Signon	1019	968	695	635	732	621	517	367	5554

Query Report by Database for user ifreb
From Jan 2005 To Aug 2005

Count of the number of times each database was queried. Since it is possible to search more than one database with each submitted search, this count will be higher than the number of searches submitted.

Database Name	Number of Queries									
	Jan	Feb	Mar	Apr	May	Jun	Jul	Aug	Total	
ASFA: Aquatic Sciences and Fisheries Abstracts (1971-Current)	3513	3068	2422	2471	2456	2296	1487	871	18584	
Oceanic Abstracts (1981-Current)	3335	2942	2372	2470	2457	2187	1472	871	18106	
Recent References Related to Natural Sciences (New!)	1023	3001	2382	2472	2476	2261	1488	871	15974	
Web Resources Related to Natural Sciences (New!)	1023	3001	2382	2472	2476	2261	1488	871	15974	
Total	8894	12012	9558	9885	9865	9005	5935	3484	68638	

CSA Illumina Content Units Examined by User

Name: Jacqueline Prodhomme
Organization: Ifremer SDP Brest Service

All Servers - From Jan 2005 To Aug 2005

User	Record Format	Records Viewed		Records Captured					
		List View	Full View	Email	Save	Print	Alert	Refworks	Totals
ifreb	SubTotal	308392	201	3483	83713	11655	2425		101276
	citation	46497		50	405	120			575
	fullrec	13714	201	1476	32565	2308	2425		38774
	abstract	247652		1793	24095	8591			34479
	custom	529		164	26648	636			27448

If we use only the statistics provided by CSA from March 2005 to August 2005 – the figures would be the following , and can be compared with the statistics given by Ifremer via the connections on the Bibliothèque La Pérouse (BLP) where the number of signon is not 3567 “ signon” but 2979 signons.:

If we wish to compare the statistics provided by CSA and by Ifremer (To connect ASFA on Host CSA/Illumina via Web Ifremer/Library on Ifremer Intranet), we begin only in March (date where our system was installed. We have 2979 signon (connections), this number is lower than the data provided by editor CSA if we delete the month January. Indeed CSA indicates in this case 4535 connections (with January). We have Ifremer scientists and sometimes myself who are connected directly to the URL from CSA and use the user and password. They do not search directly via the Web of the library. Bibliothèque La Perouse (link made on Ifremer Intranet where it is no more necessary to indicate CSA ifremer user + CSA Ifremer password). Also these signon (connections) accesses are not accounted in our statistics. Another explanations: it is to be defined

CSA Illumina -Report by Month From Mar 2005 To Aug 2005

Signons = the number of times a username and password were used to access CSA Illumina.

Searches = the number of searches submitted by persons accessing with a username and password.

Queries = total number of times databases were queried.

Event Type	Mar-2005	Apr-2005	May-2005	Jun-2005	Jul-2005	Aug-2005	Total
Query	9558	9885	9865	9005	5935	3484	47732
Search	2521	2474	2467	2261	1488	871	12082
Signon	695	635	732	621	517	367	3567

Query Report by Database for user ifreb From Mar 2005 To Aug 2005

Count of the number of times each database was queried. Since it is possible to search more than one database with each submitted search, this count will be higher than the number of searches submitted.

Database Name	Number of Queries						
	Mar	Apr	May	Jun	Jul	Aug	Total
ASFA: Aquatic Sciences and Fisheries Abstracts (1971-Current)	2422	2471	2456	2296	1487	871	12003
Oceanic Abstracts (1981-Current)	2372	2470	2457	2187	1472	871	11829
Recent References Related to Natural Sciences (New!)	2382	2472	2476	2261	1488	871	11950
Web Resources Related to Natural Sciences (New!)	2382	2472	2476	2261	1488	871	11950
Total	9558	9885	9865	9005	5935	3484	47732

**CSA Illumina Content Units Examined by UserName: Jacqueline Prodhomme
Organization: Ifremer SDP Brest Service**

All Servers - From Mar 2005 To Aug 2005

User	Record Format	Records Viewed		Records Captured					
		List View	Full View	Email	Save	Print	Alert	Refworks	Totals
ifreb	SubTotal	186674		3036	68551	4638	767		76992
	citation								
	fullrec	8133		1350	29652	1016	767		32785
	abstract	178398		1686	19187	2986			23859
	custom	143			19712	636			20348