

URBforDAN

Participatory Integrated Management of Urban and Peri-urban Forests in the Danube Region

**SILVA MEDITERRANEAN WORKING GROUP ON URBAN AND PERI-URBAN
FORESTRY, Webinar, 27. 11. 2020**

URBforDAN CORE MANAGEMENT TEAM:

City of Ljubljana – Jurij Kobe, Luka Sešel, Maja Bovcon

Slovenia Forest Service - Dragan Matijašič, Tina Simončič, Robert Hostnik, Samo Škerjanc, Živa Bončina

ZaVita d.o.o. – Klemen Strmšnik, Matjaž Harmel, Matevž Premelč



URBforDAN Project in a Nutshell

Danube Transnational Programme

- 2.788.566,61 €
- 12 project partners
- 4 associated partners
- 06/2018 – 03/2021



TARGETING:

- ✓ 10 countries & cities
- ✓ 6,5 mio. inhabitants
- ✓ 35,5 km² of urban forests
- ✓ 15 mio visitors per year



LJUBLJANA
Golovec hill



BUDAPEST
Hármashatár Hill



CLUJ-NAPOCA
Făget Forest



VIENNA
Danube Island



ZAGREB
Park forest Grmošćica



BELGRADE
Avala mountain



IVANO-FRANKIVSK
Vovchynets Hills

PROJECT CONCEPT

Participatory Approach

Integrated UPF Management

Utilization of UPF Ecosystem Services

JOINT
development,
testing &
evaluation.

GOALS

- 1) **Improved management of urban forests** in 7 Danube cities.
 - ✓ *Introduction of Participatory Planning and Management Approach*
 - ✓ *Development of Integrated Multi-use Management Plans (IMMPs)*
 - ✓ *Development of Management Tools & Models*
- 2) **Preserved natural heritage** as biodiversity „hot-spots“ & „stepping stones“.
- 3) **Strengthened cross-sectoral cooperation** between key actors.
- 4) **Improved quality of life** in 7 cities.
- 5) Supported **multi-purpose use of UPF** and explored new sustainable development opportunities.

DEVELOPMENT PROCESS

„What is URBforDAN all about?“

URBforDAN Project Concept

WP 1 - PROJECT MANAGEMENT

WP 3 - PARTICIPATORY APPROACH

Improved communication between UPF Owners, Managers and Users

WP 4 - UPF MANAGEMENT PLANS

Participatory development of 7 Integrated Multi-use Management Plans (IMMP)

WP 5 - UTILIZATION OF ECOSYSTEM SERVICES (ES) IN UPF

Actions for promotion of multipurpose use of UPF

WP 2 - COMMUNICATION & DISSEMINATION

UPF Danube Network

UPF Participatory Management Models & Tools

UPF Participatory Planning & Management Guidelines

URBforDAN Capitalisation Strategy

Documented learning interactions

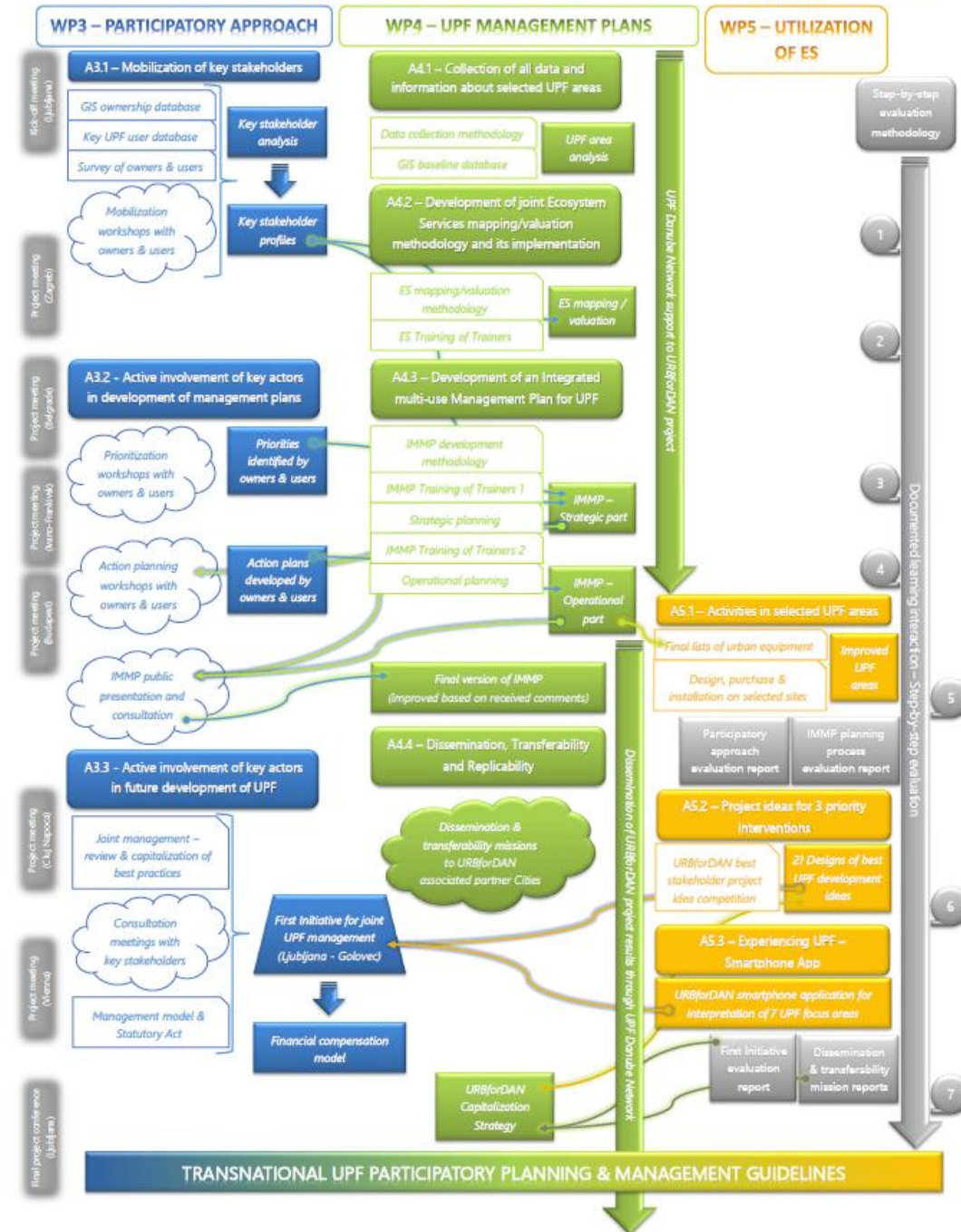
Joint development

Joint testing

Joint evaluation

URBforDAN DEVELOPMENT PROCESS MODEL

(as implemented by an individual URBforDAN partner City)



MAIN OUTPUTS

- Participation (WP3)**
- 7 participatory UPF planning & decision-making PROCESSES
 - INITIATIVE for joint management of UPF
 - Financial Compensation MODEL
 - Participatory Planning & Management GUIDELINES
-

- Management (WP4)**
- Guidance packages and TRAINING OF TRAINERS
 - Ecosystem services mapping & valuation METHODOLOGY
 - 7 Integrated multi-use management PLANS (IMMPs)
 - Urban Forest Danube NETWORK
-

- Utilization (WP5)**
- 7 Urban forest areas, EQUIPPED for multipurpose use
 - SMARTPHONE APP for UPF visitors

KEY DELIVERABLES – Stakeholder Profiles

Identified type of stakeholder	BELGRADE	BUDAPEST	CLUJ-NAPOCA	IVANO-FRANKIVSK	LJUBLJANA	VIENNA	ZAGREB
FOREST USERS							
Hikers	✓	✓	✓	✓	✓	✓	✗
Cyclists	✓	✓	✓	✓	✓	✓	✓
Downhill Cyclists	✓*	✓*	✓	✓	✓	✗	✓*
Joggers	✓	✓	✓	✓	✓	✓	✓
Pet walkers	✓	✓	✓	✓	✓	✓	✓
Horseback riders	✓	✗	✓	✓	✓	✗	✓
Families with children	✓	✓	✓	✓	✓	✓	✓
Forest fruit pickers	✓	✓	✓	✓	✓	✓	✓
Teachers with pupils	✓	✓	✓	✓	✓	✓	✓
Scientists	✓	✓	✓	✓	✓	✓	✓
Working in forest	✓	✗	✓	✓	✓	✓	✓
Paragliders	✗	✓	✗	✗	✗	✗	✗
Climbers	✗	✓	✗	✗	✗	✗	✗
Photo-hunters	✗	✓	✓	✓	✗	✓	✓
Pedestrians	✓	✓	✓	✓	✓	✓	✓
Archers	✗	✗	✗	✗	✓	✗	✗
Boy-scouts	✗	✗	✗	✗	✓	✗	✗
In-line skaters	✗	✗	✗	✗	✗	✓	✗
Bathers/Swimmers	✗	✗	✗	✗	✗	✓	✗
FOREST MANAGERS							
Forest Managers	✓	✓	✓	✓	✓	✓	✓
FOREST OWNERS							
Public owners	✓	✓	✓	✓	✓	✓	✓
Large private owners	✗	✗	✗	✗	✗	✗	✗
Small private owners	✓	✗	✗	✗	✓	✗	✓
Micro private owners	✓	✗	✗	✗	✓	✗	✓

5. Key Stakeholder group profile – CYCLISTS



The average cyclist visiting urban and peri-urban forests in one of URBforDAN cities is 31-45 years old, highly educated and employed. He/she is either:

- A citizen of the URBforDAN city living 2-5 km away from the focus area, visiting the urban forest a few times a week or a month.
- A visitor of the URBforDAN city visiting the urban forest a few times a year.

He/she most commonly uses a bicycle or a car to access the urban forest and spends there 1-5 hours.

Despite rather poor knowledge about the actual protection/adapted management regimes applicable to the urban forest, she/he believes that his/her activity has no negative impacts on nature. He/she is more aware of potential conflicts with other users but is still convinced that he/she is not responsible for them.



He/she enjoys the natural environment and is bothered by the poor maintenance of trails and urban infrastructure. Ban of motorized vehicles is high on his/her agenda and supports the development of well-equipped entrance points with good and well-maintained trails in the urban forest.

He/she would like URBforDAN project to:

- Improve marking of trails and separate cycling and walking trails in the urban forest.
- Install urban equipment and improve sports/recreational infrastructure.
- Set-up additional points of interest.

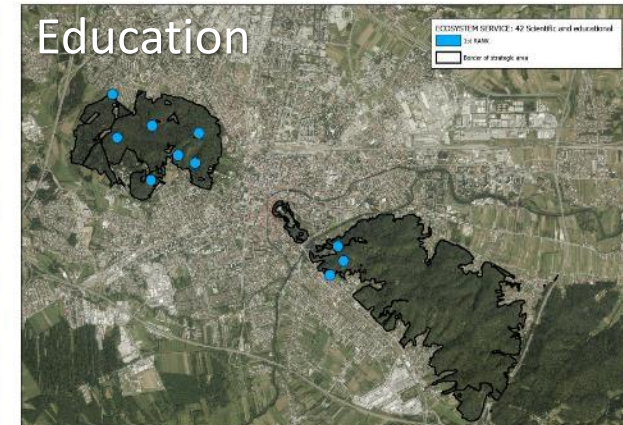
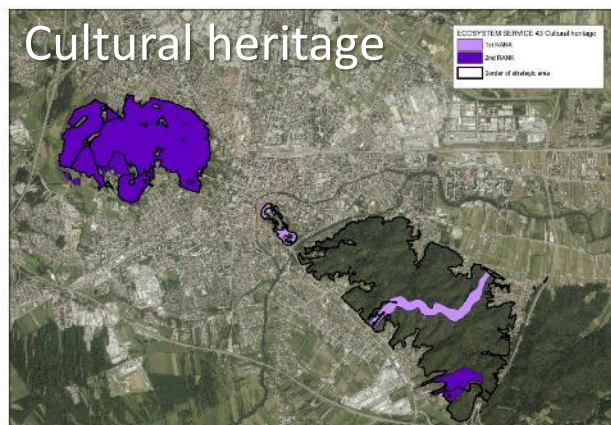
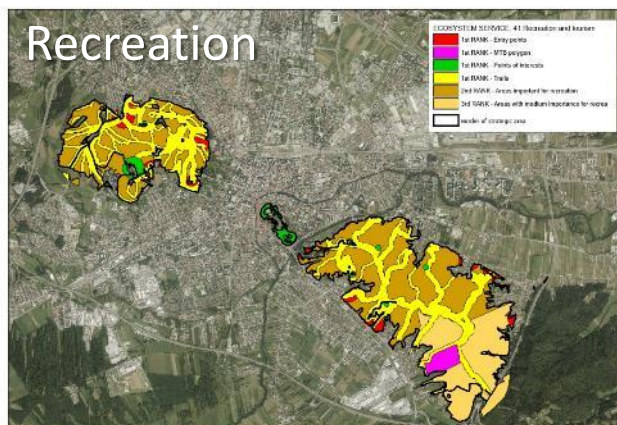
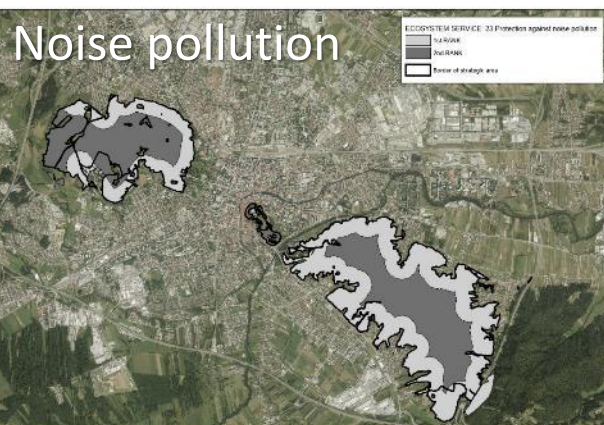
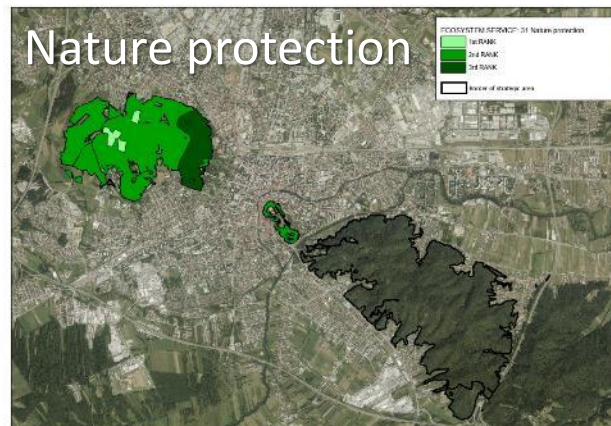
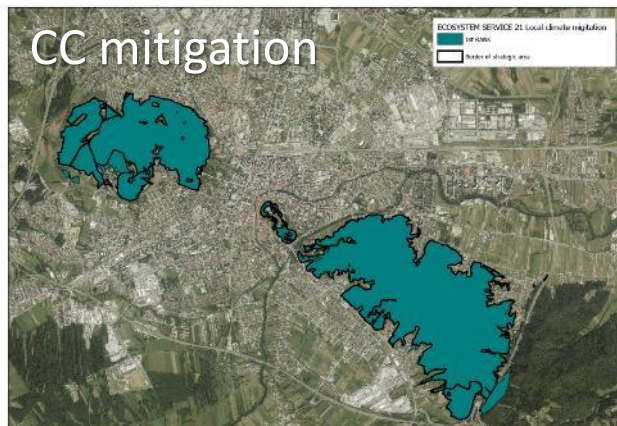
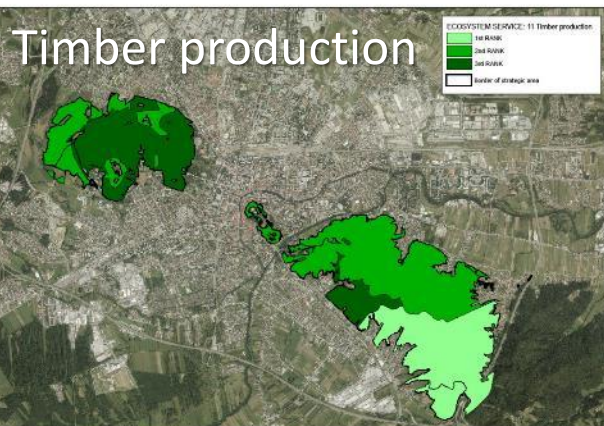
She/he supports the further sustainable development of the urban forest and recognizes its potential for recreation, sports and education.

In the table below you can find a more detailed overview of cyclist profiles per URBforDAN cities.

PHOTO SOURCES:

<https://www.thenewforest.co.uk/ideas-and-inspiration/blog/read/2018/05/new-forest-cycling-where-two-wheels-are-better-than-four-b78>

KEY DELIVERABLES – ES mapping



KEY DELIVERABLES – Strategic development priorities

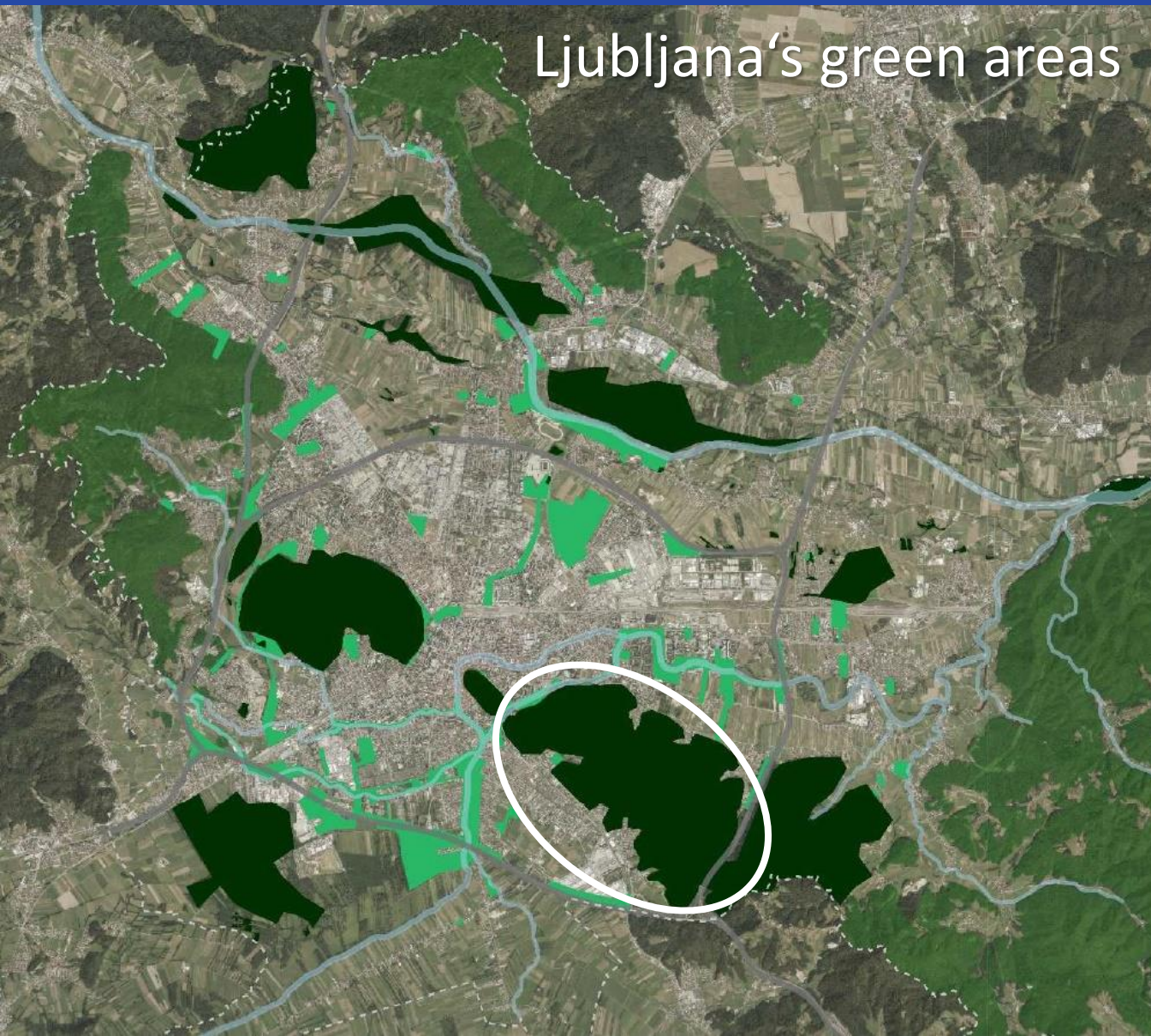
The concept of spatial development of Ljubljana's urban forests

- Recreation
- Dispersed recreation
- Tourism
- Protection of natural heritage
- Protection of cultural heritage
- Education
- Protection of drinking water
- Protective forests
- Ljubljana highway-ring
- The border of the City of Ljubljana

Legenda







- rekreacija
- razpršena rekreacija
- turizem
- varstvo narave
- kulturna dediščina
- raziskovanje in izobraževanje
- pitna voda
- varovalni učinki
- Ljubljanski cestni obroč
- Mestna Občina Ljubljana

KEY DELIVERABLES – IMMPS

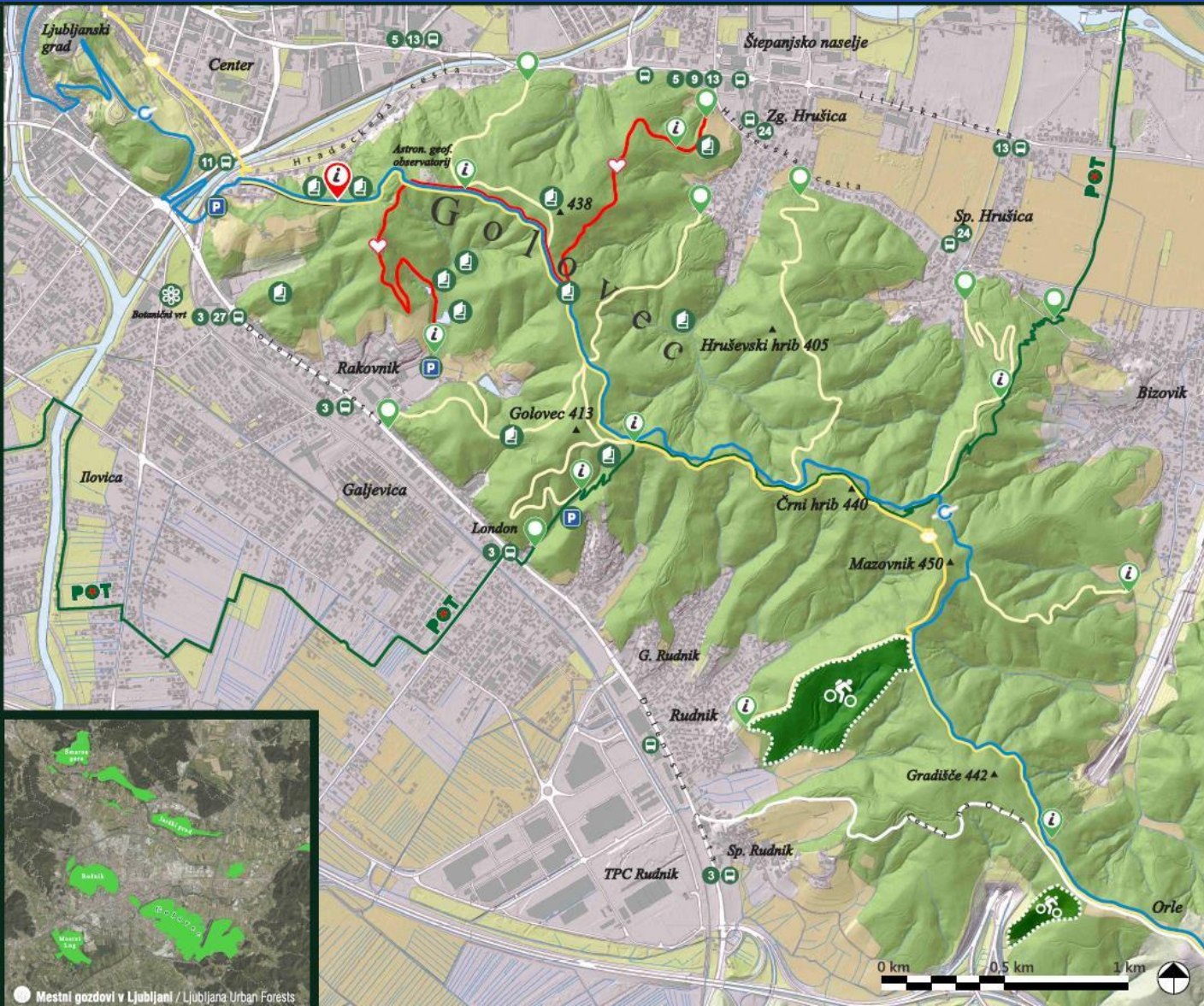


Integrated Multi-use Management Plan:

- ✓ **Strategic part → for all Ljubljana's Urban Forests**
- ✓ **Operational part → only for the selected focus area – Golovec hill**

-  Ljubljana's Urban Forests
-  Other forests in Ljubljana
-  Green areas
-  Water bodies
-  Ljubljana highway-ring
-  The border of the City of Ljubljana

KEY DELIVERABLES – Equipment



Mestni gozd / Urban Forest

Golovec

Vi ste tu / You are Here
Ljubljana Center

Slovenska tumokolesarska pot / Slovene MTB transversal	Srčna pot / Heart trail	Jakobova pot / Way of St. James	POT	Pohodne in tovarštvu / Path of Remembrance and Comradeship	Pohodne in kolesarske poti / Footpaths and Bike Trails	Gorskokolesarski poligon / Golovec MTB Range
Info točka / Information point	Parkirišče obiskovalci / Parking Visitors	Mestni avtobus LPP / City Bus Network	Odgovorni meši v kati / Waste to Dismantle	Priljubljeni za srečno parjenje / Clean up upon your pull	Splošni gozdni mir / Respect Forest Peace	

Legenda / Legend

- Vstop v mestni gozd / Entrance to Urban Forest
- Pohodne in kolesarske poti / Footpaths and Bike Trails
- Kolesarske poti / Bike Trails
- Pohodne poti / Footpaths

Yours truly: Urban Forest
Mestni gozd APP / Urban Forest APP

Projekt URBforDAN / URBforDAN project

Ljubljana Turizem / Visit Ljubljana

Mestni avtobus LPP / City Bus Network

Bodimo spoštljivi / Fair Play!

Mestna občina Ljubljana | ZAVOD za GOZDOVE SLOVENIJE | Interreg Danube Transnational Programme URBforDAN

Projekta je sofinancirala iz skladov Evropske unije (ERDF, IPA, ERD)



KEY DELIVERABLES – City visits



KEY DELIVERABLES – Actively involving citizens

Best idea competition

Brv Golovec, avtor Petra Mlakar, mentorstvo: Tina Rupar Kobe, Blaž Rupar



Gozdno igrišče, avtor: Jurij Strmšnik, mentorica: Milena Jačimović Strmšnik



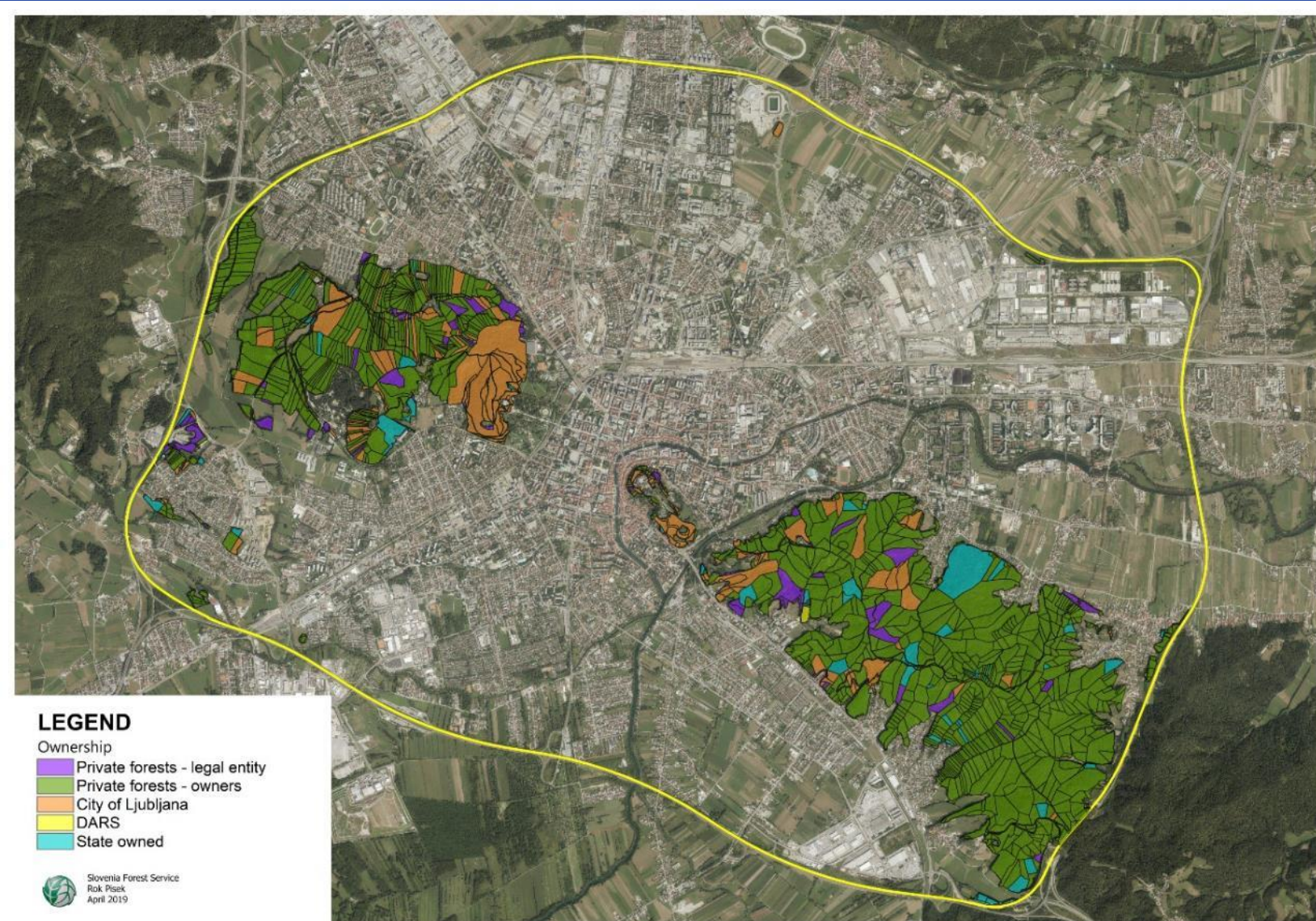
Educational materials and tools



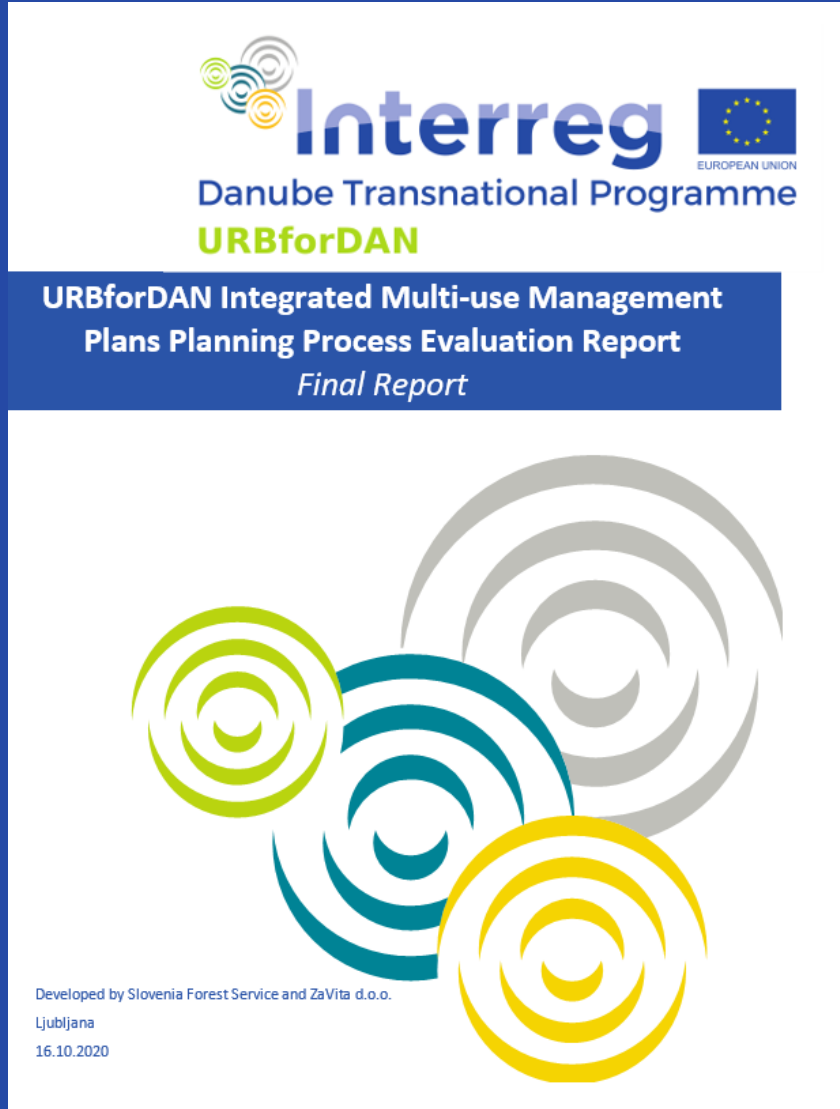
UPF code of conduct




KEY DELIVERABLES – UPF management initiative




KEY DELIVERABLES – UPF management guidelines




Interreg 
Danube Transnational Programme
URBforDAN

**URBforDAN Integrated Multi-use Management
Plans Planning Process Evaluation Report
Final Report**

Developed by Slovenia Forest Service and ZaVita d.o.o.
Ljubljana
16.10.2020



Interreg 
Danube Transnational Programme
URBforDAN

**URBforDAN Participatory Approach
Evaluation Report
Final report**

Developed by the City of Ljubljana and ZaVita d.o.o.
Ljubljana
26.10.2020

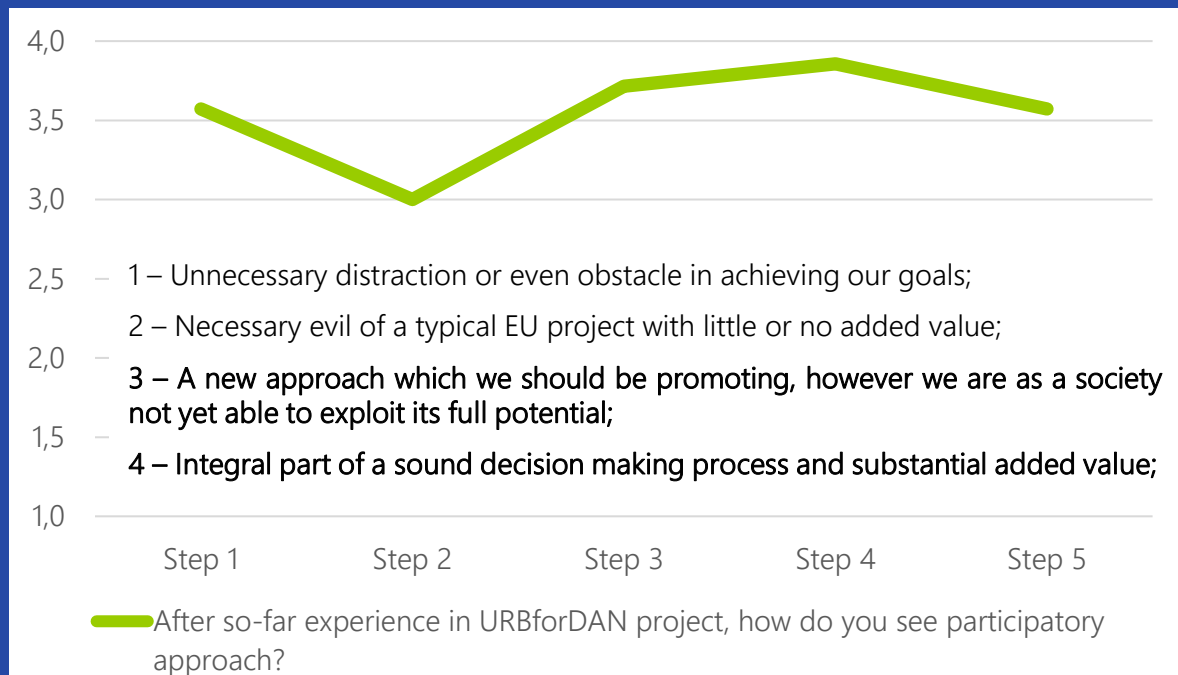
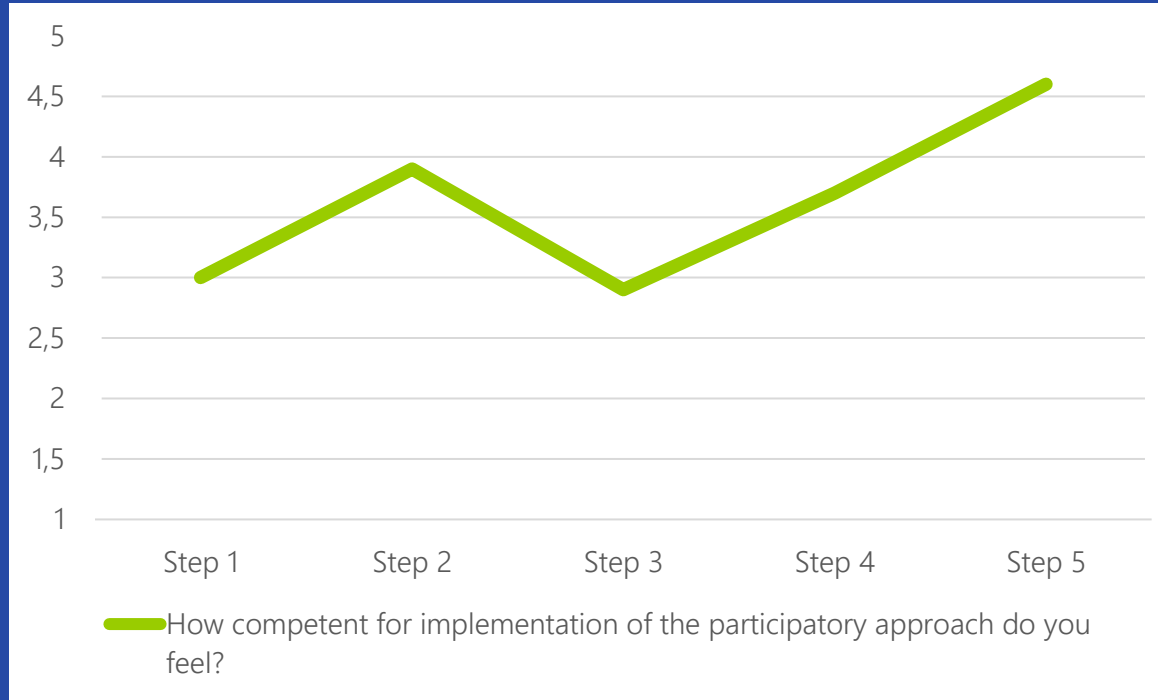
**For more information –
including lessons learnt
– please visit the
URBforDAN project
library or UPF Danube
Network:**

[https://dgroups.org/fao/
trees-for-the-cities/urb-
for-dan](https://dgroups.org/fao/trees-for-the-cities/urb-for-dan)

LESSONS LEARNT

PARTICIPATION (WP3)

- Citizens want to participate and can contribute – if we let them...
- PA takes effort and time, but also delivers high-quality results!
- „Listening to...“ and „Involving into...“ is not the same!
- PA is about building & maintaining trust – „small gestures“ matter!
- We need adequate internal capacities or external support to exploit its' potential.
- Only continuous stakeholder involvement delivers mind-change...



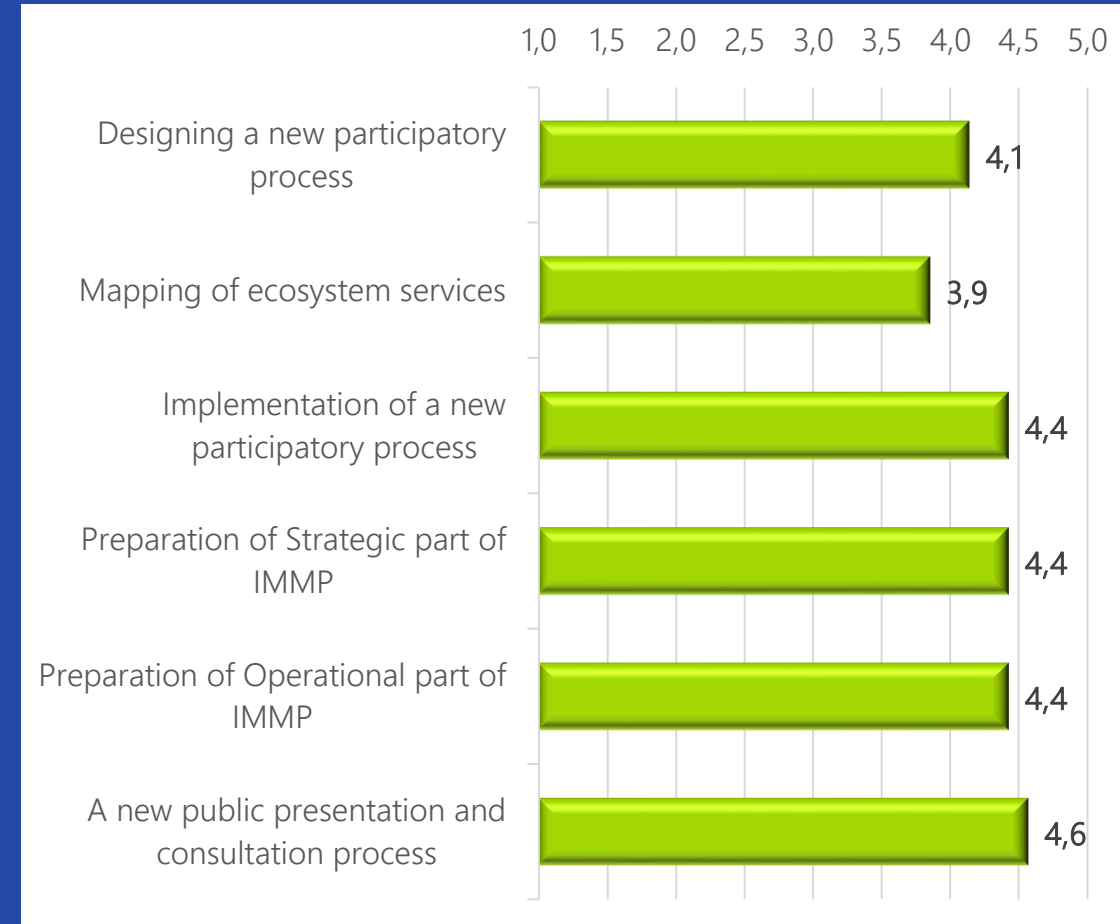
LESSONS LEARNT

MANAGEMENT (WP4)

- A unique, effective & easily transferable ES mapping & IMMP development methodology!
- We need adequate internal capacities or external support to exploit its' potential.
- ES mapping criteria should always follow the aim of the mapping & UPF area size.
- Timely, sincere & constant involvement of key stakeholders is necessary!
- Internal communication is just as important as external...
- Integration of IMMPs into existing municipal and forestry planning documents.

The level of competence for preparation of IMMPs for other UPF in partner cities

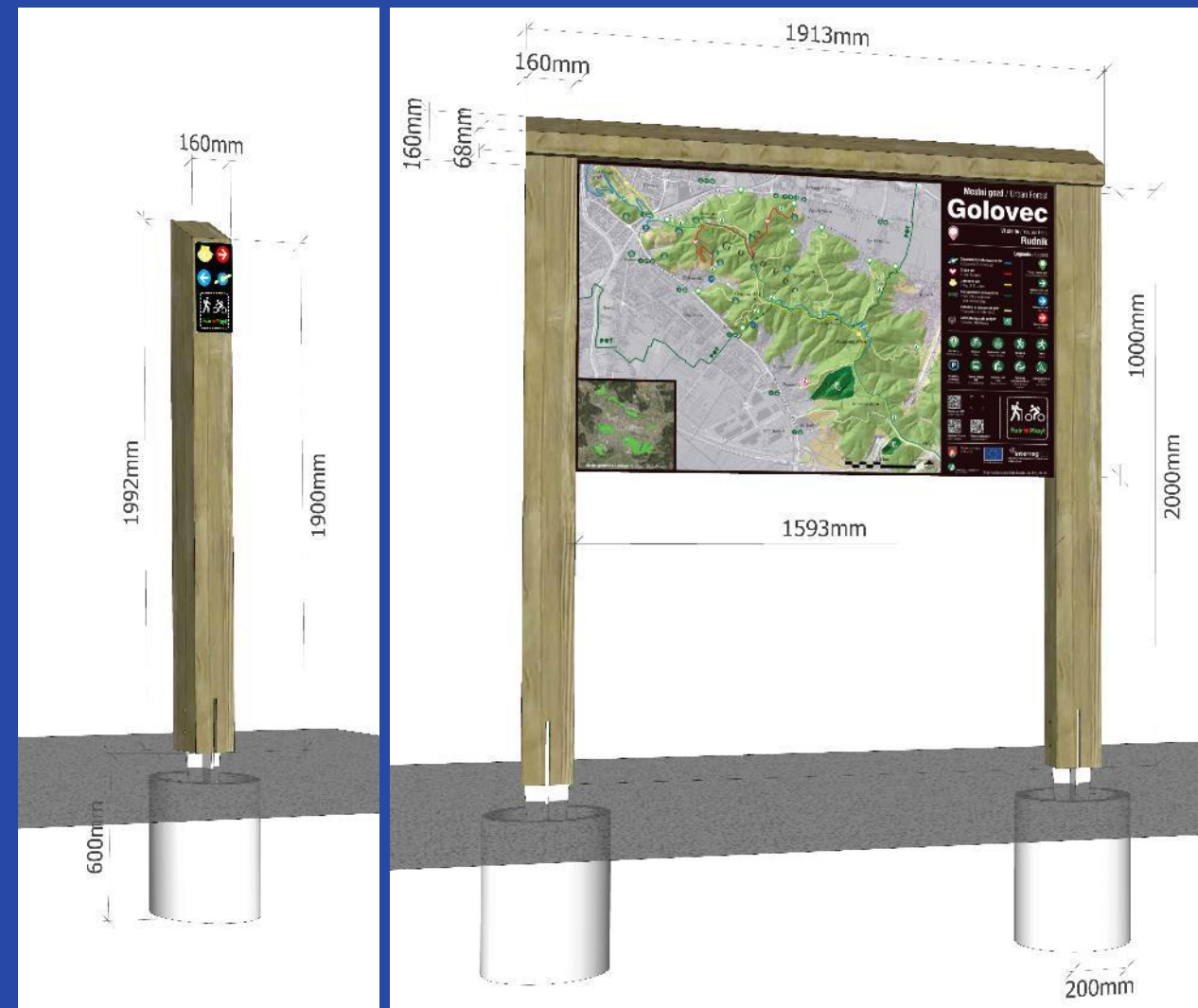
(Survey among project partners – on the scale 1-5 where 1 = worst / 5 = best)



LESSONS LEARNT

UTILIZATION (WP5)

- It is important to move past planning and show concrete results!
- Short-term goals are just as important as long-term goals!
- Communication, just as management, is a „never-ending process“...
- Public procurement is an obstacle to direct support to local producers...



WHAT'S NEXT?

- ✓ **URBforDAN project extension** – additional activities to be implemented until September 2021
- ✓ **Application for URBACT Programme** pronounced „urban good practice“
- ✓ **National level transfer** of the „URBforDAN good practice“
- ✓ **Transnational level transfer** of the „URBforDAN good practice“
- ✓ **Up-scaling and main-streaming** within the „Green Deal“ sustainable urban context

Thank you for your attention and questions!

Visit us: www.interreg-danube.eu/approved-projects/urbfordan

Follow us:   urbfordan

Join us: **UPF Danube Network**

<https://dgroups.org/fao/trees-for-the-cities/urb-for-dan>

#URBforDAN