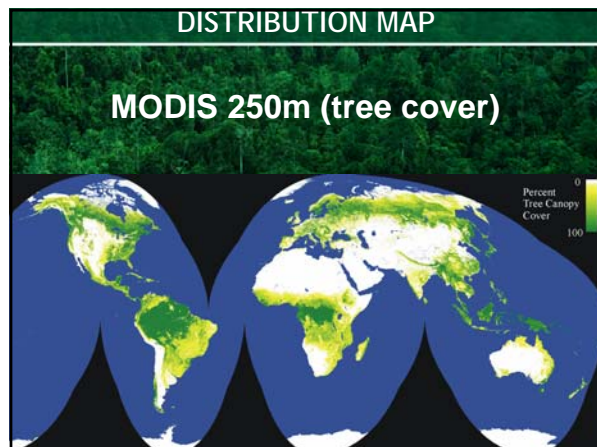
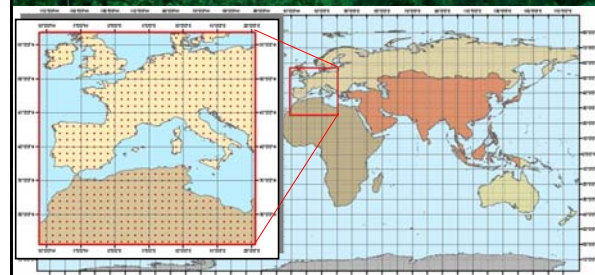


Why are we doing a REMOTE SENSING SURVEY?

1. Complement (not replace) National data
2. Global and regional maps of tree cover
3. Get TRENDS from more consistent data = show where changes are located - deforestation and + afforestation

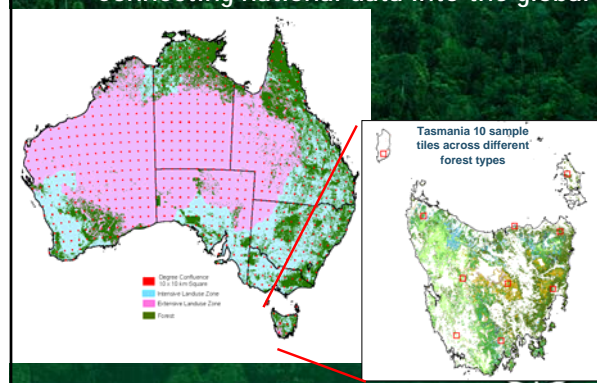


Proposed remote sensing sampling framework



- Wall to wall MODIS (250m), plus LANDSAT (30m) at 1 degree: 10 km x 10 km
- ~ 13 000 sampling sites (excluding poles and deserts)
- Sampling intensity: about 1 % (1.2 % of land surface)

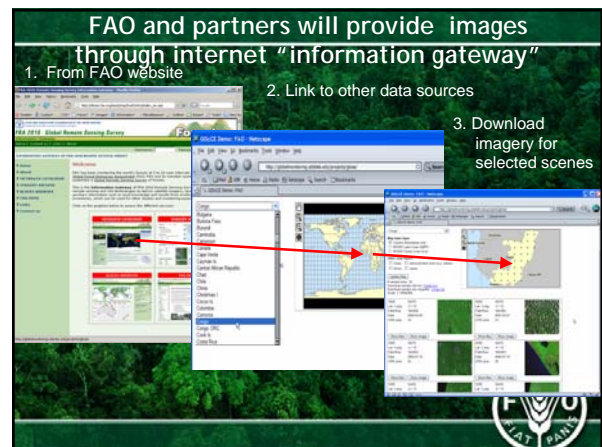
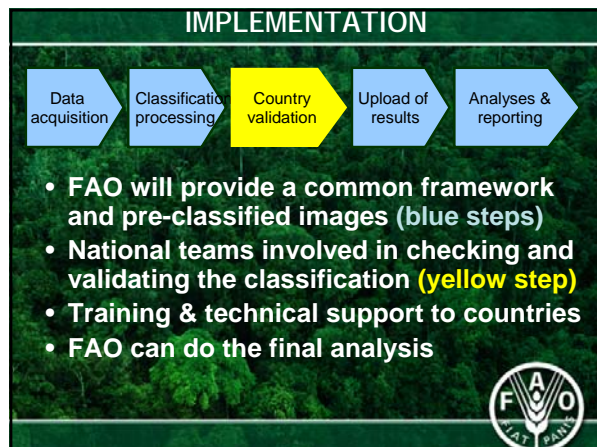
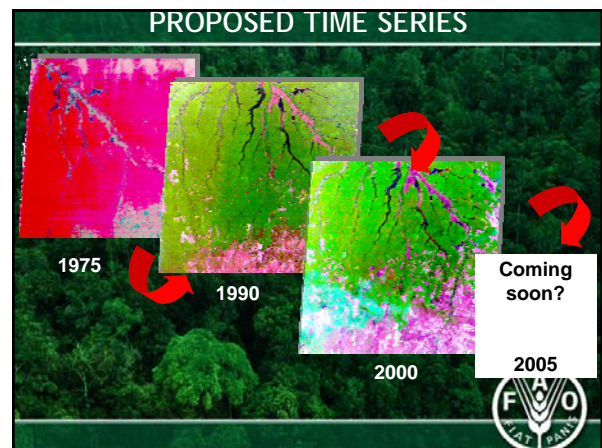
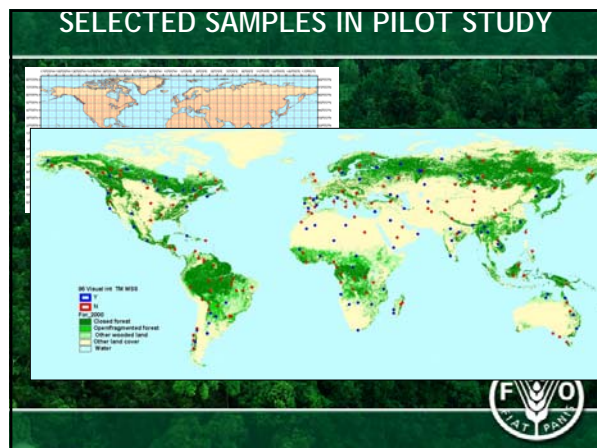
Proposed sampling framework across Australia Connecting national data into the global



Pilot study to test the process

- The initial step will be to undertake a Pilot study to test and refine the process before global application
- 20 countries covering wide range of forest types participating in Task Force and Pilot
- using a subset of the global scenes selected across varied biomes





- ### EXPECTED OUTPUTS
1. **Global and regional tree cover maps**
- (not intended to be used at national scale)
 2. **Trends in regional, biome and global tree cover from 1975 (if poss.), 1990-2000 and to 2005**
 - area change statistics
 - information on tree cover and dynamics
 3. **Improved technical skills through capacity building**
 4. **A framework to support monitoring of forests, land use & environment**
 5. **Baseline data for further research & modeling**
- Primary products

- ### Partners to add expertise and value
- **Countries:** national agencies, regional hubs
 - **FAO**
 - **Joint Research Centre (Italy)**
 - **Universities (SDSU, UMD, Jena, Boston, Mississippi)**
 - **USGS/EROS data center**
 - **NASA**
 - **Heinz Center (US)**
 - **World Bank**
 - **UNEP**
 - **World Resources Institute, CI**
 - **GOFC-GOLD**
 - **GEO Secretariat**
 - **Open to others**

NEXT STEPS

- Finalise preparations for the remote sensing survey
- RSS Task Force set up to refine methods, advise & test the process
- 2008-2009: most of the work
 - Hold regional workshops, training etc
- 2010: Data analysis and prepare drafts
- 2011: Final report and maps



THANK YOU

More information is available from:

www.fao.org/fra

fra@fao.org

