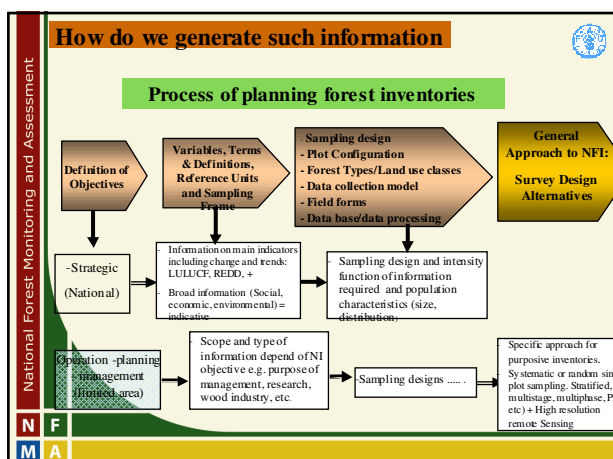
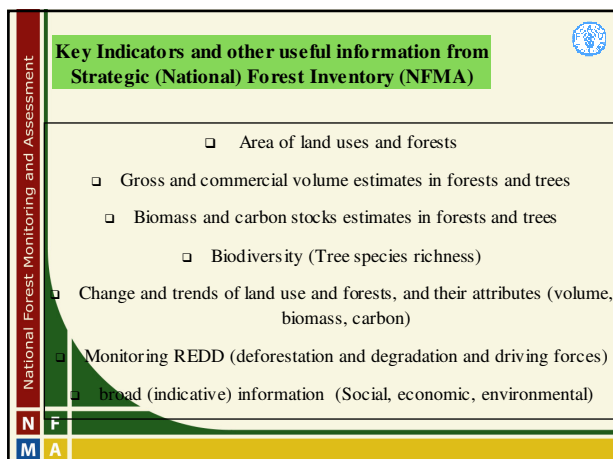


FAO response to needs/requests

- Strengthen country capacity
- Harmonize information framework
- Improve knowledge
 - State of resources
 - ALL benefits of forests & TOFs
 - Uses & users of resources
- Improve information management systems
 - Monitor long term trends
 - Support national policy dialogue, strategy development, national forest programmes & international reporting towards SFM
 - Demand driven



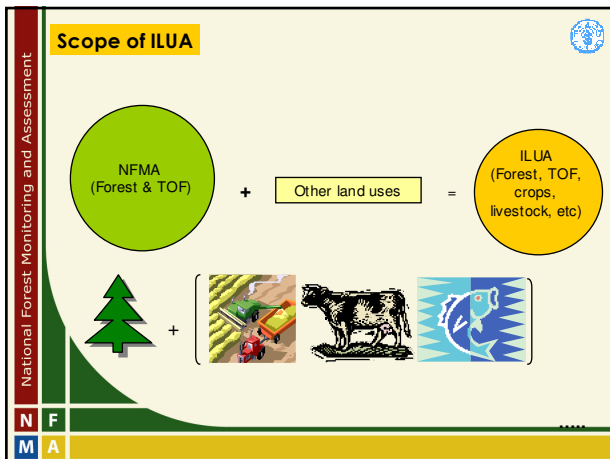


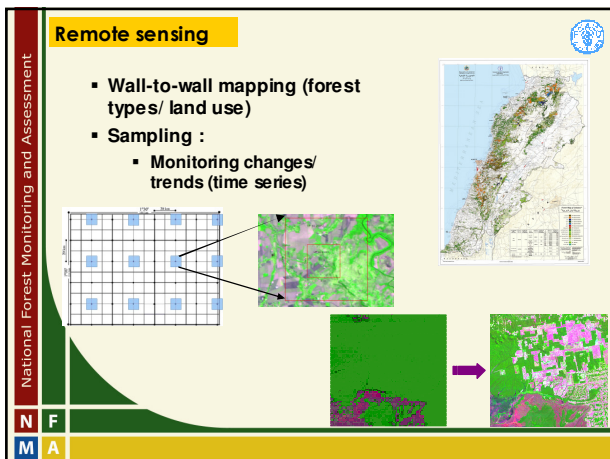
National Forest Monitoring and Assessment

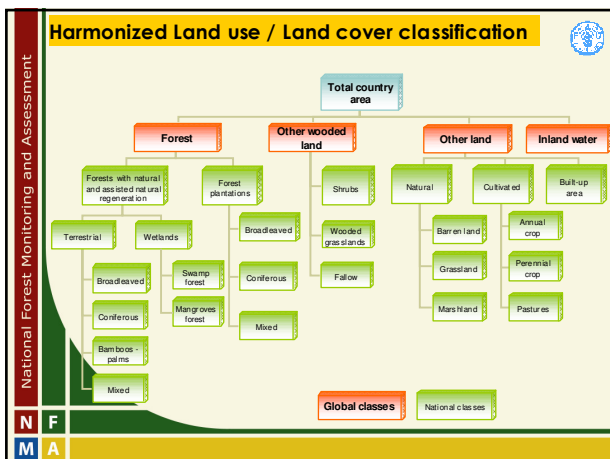
NFMA: Land use classes, attributes and targeted precision

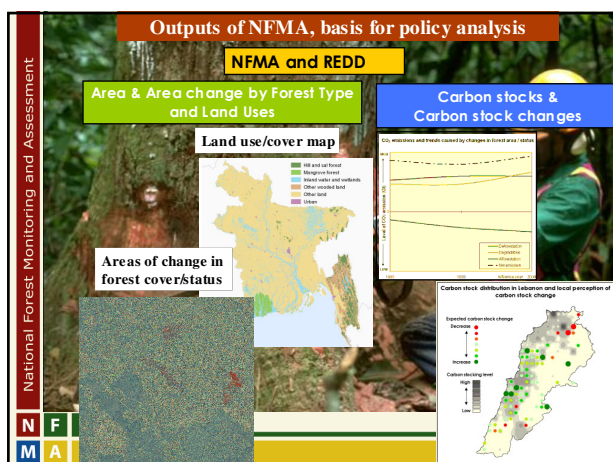
Class level	Land use classes and attributes										Target precision of NFMA	
Global classes	Forest					O W L		O L			High	
2 nd Level: National	Natural		Planted		Shrubs	Wooded grasslands		Natural	Cultivated		Lower (high for some parameters)	
3 rd Level: National	Broadleaved	Deciduous	Pine	Eucalyptus	Mixed			Bare land	Grassland	Annual crop	Perennial crop	Indicative information (acceptable for some parameters)
4 th Level: National	Primary	Secondary										Indicative information (acceptable for few parameters)

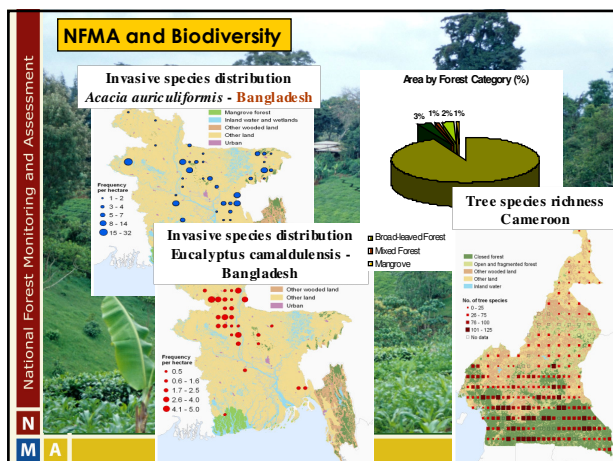
N F
M A











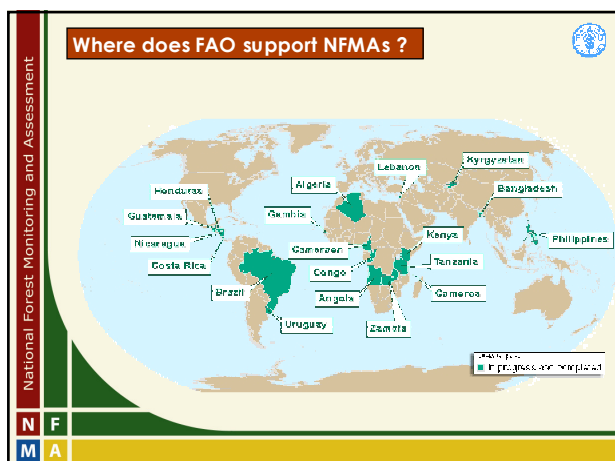
NFMA feeds into global FRA

Attributes	Forest	TOF	Corresponding FRA Tables
Extent of forest, other wooded land & other land	x	x	T1 Extent of forest & other wooded land
Ownership	x	x	T2 Forest ownership & mgmt rights
designation	x	x	T3 Forest designation & management
Forest characteristics	x		T4 Forest characteristics
Origin of forest and trees	x	x	T5 F. establishment & reforestation
Volume per land use category	x	x	T6 Growing stock
Biomass per land use category	x	x	T7 Biomass stock
Carbon per land use category	x	x	T8 Carbon stock
Forest fire	x		T9 Forest fires
Environmental problems	x	x	T9 Forest fires & Other disturbances affecting forest health & vitality
Forest and tree health	x	x	T9 Forest fires & Other disturbances affecting forest health & vitality
Biodiversity (tree species)	x	x	T12 NWFPs removals & value of removals
Products	x	x	T2 Forest ownership and management rights
User rights	x	x	T3 Forest designation and management
Management & silviculture	x		T14 Policy and legal framework
Policy analysis			T11 Wood removals and value of removals
Services	x	x	T13 Employment
Population dynamic	x	x	T15 Institutional framework
Population activities	x	x	T16 Education and research
Etc.	x	x	T17 Public finance collection and expenditures

N F M A

NFMA Experience on costs						
Cost: US\$ 0.3 – 6 Millions, (Field data collection ≈ US\$ 3,000/sample unit: Tract)						
Items	Zambia	Honduras	Nicaragua	Bangladesh	Cameroon	Average
Sample size (Tracts)	221	156	371	296	206	250
Total budget (Million US\$)	1.169	0.500	1.068	0.520	0.580	0.815
% of fieldwork from total	29	24	27	22	32	25
% of management from total	7.7	7.2	8.5	6.7	15.3	8.8
International TA	29.5	29.6	13.3	38.5	13.8	23.7
Cost per Sample unit (US\$)	5,290	3208	2,879	1757	2,614	3,261
Cost per km2 (US\$)	1.6	4.5	8.2	3.6	1.2	2.4

NFMA: Achievements and Costs 2000 – 2008 and beyond						
	TF	RP	TCP	UTF	GCP	Government
Support to FAO HQs capacity (%)	4,546,000	2,000,000			3,205,000	
%	47	21			33	
Field	1,344,000		4,939,000	17,390,000	37,429,000	4,797,000
%	2		7	26	57	7
FAO: 25%, SIDA: 56%, Finland: 7%, South Korea: 8%, Netherlands: 2%, Norway: 2%						
NFMA projects		Cost (US\$ million)				
		Actual	Estimated			
NFMA projects completed in 9 countries over last 8 years		5				
NFMA projects underway in 9 countries		11				
4 NFMA projects in pipeline, including NFI Brazil			50			
Requests for NFMA from 27 countries			≈ 50			
Over next 10 years, FAO could assist every significant tropical country to develop capability to carry out a national assessment			≈ 100			



National Forest Monitoring and Assessment

FAO National Forest Monitoring and Assessment (NFMA) / Integrated Land Use Assessment (ILUA) Countries Projects

Pending requests

N

F

M

A

National Forest Monitoring and Assessment

Further information on NFMA

<http://www.fao.org/forestry/site/nfma>

N

F

M

A

National Forest Monitoring and Assessment

NFMA: Publications

- Field Manual – Approach to NFMA/ILUA
- Various working papers
- Countries' reports, e.g. final report of findings, policy briefs, policy analysis, formulated policies
- Knowledge reference: www.fao.org/forestry/site/nfaknowledgeref/en
- Website: <http://www.fao.org/forestry/site/nfma/en/>
- Promotional brochures on NFMA and related themes

N

F

M

A
