



Food and Agriculture  
Organization of the  
United Nations

ADVISORY COMMITTEE  
ON SUSTAINABLE  
FOREST-BASED  
INDUSTRIES (ACFSI)

# Assessment of industrial roundwood production from planted forests



# Background



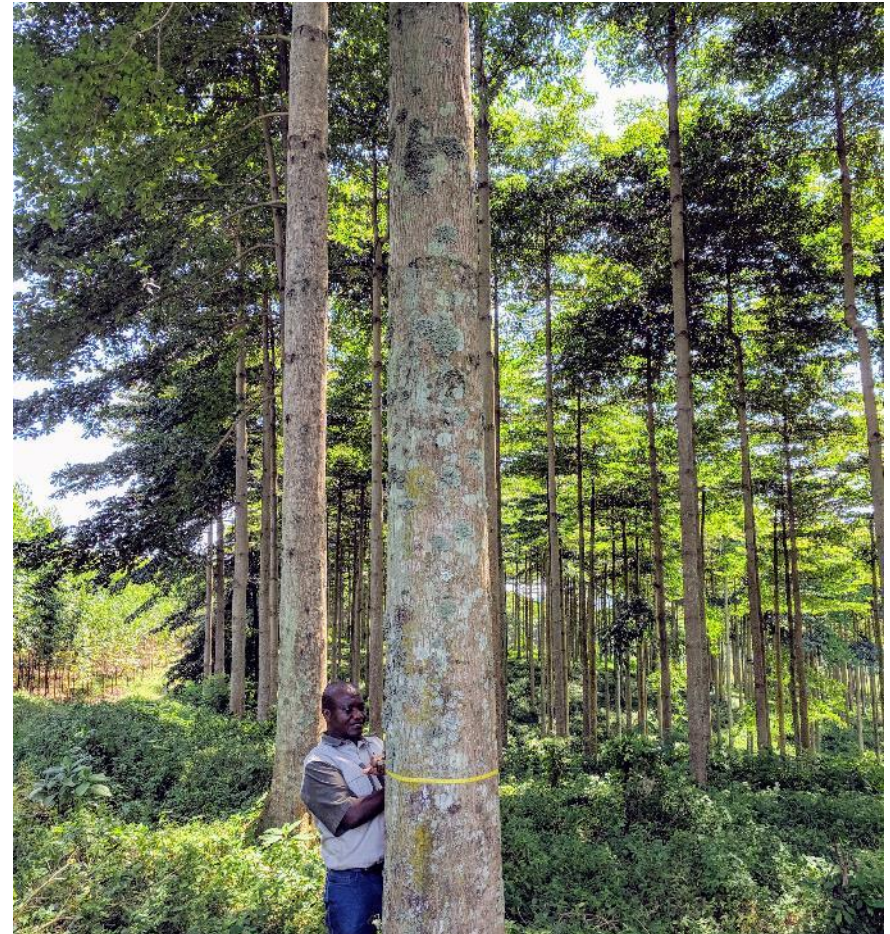
Food and Agriculture  
Organization of the  
United Nations

ADVISORY COMMITTEE  
ON SUSTAINABLE  
FOREST-BASED  
INDUSTRIES (ACSFI)

In 2014, FAO estimated that planted forests provided 45% of the global industrial roundwood supply.

This paper has been cited hundreds of times since.

FAO's Global Forest Resources Assessment (FRA) 2020 reports planted forest area's rate of increase has slowed from 2010 to 2020. It also disaggregates plantations as a type of planted forest for the first time since 2005.



Jürgensen, C., Kollert, W. & Lebedys, A. 2014. Assessment of industrial roundwood production from planted forests. *FAO Planted Forests and Trees Working Paper*, FP/48/E(48): 40. (also available at <http://www.fao.org/forestry/plantedforests/67508@170537/en/>).

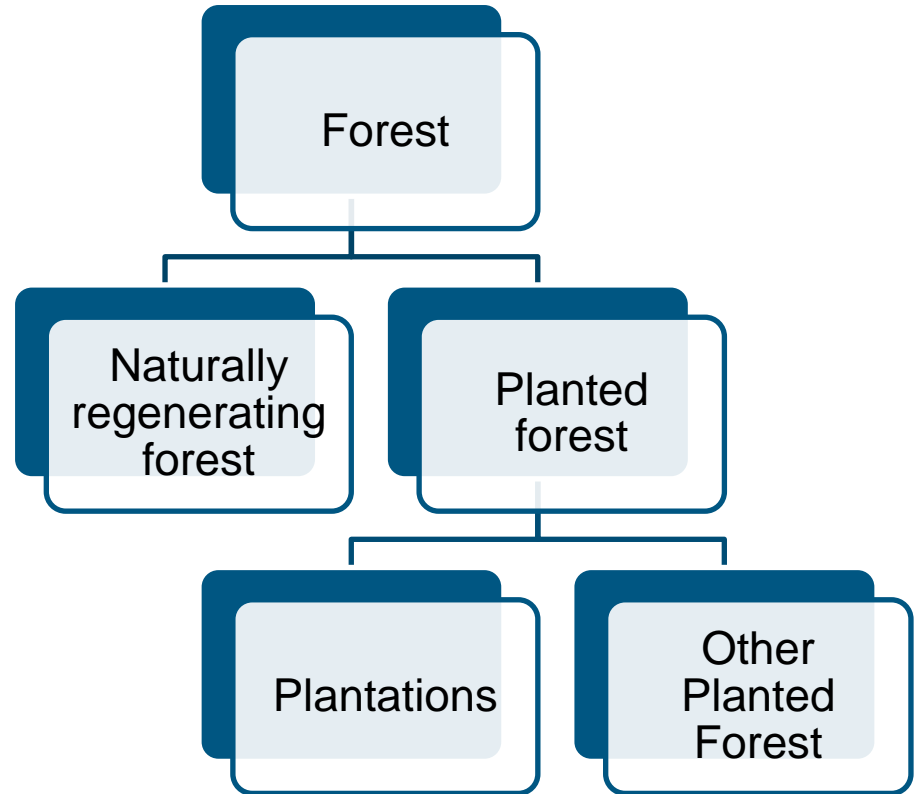
Payn, T., Carnus, J.M., Freer-Smith, P., Kimberley, M., Kollert, W., Liu, S., Orazio, C., Rodriguez, L., Silva, L.N. & Wingfield, M.J. 2015. Changes in planted forests and future global implications. *Forest Ecology and Management*, 352: 57–67. <https://doi.org/10.1016/j.foreco.2015.06.021>



Food and Agriculture  
Organization of the  
United Nations

ADVISORY COMMITTEE  
ON SUSTAINABLE  
FOREST-BASED  
INDUSTRIES (ACSFII)

# FAO definitions



# Background

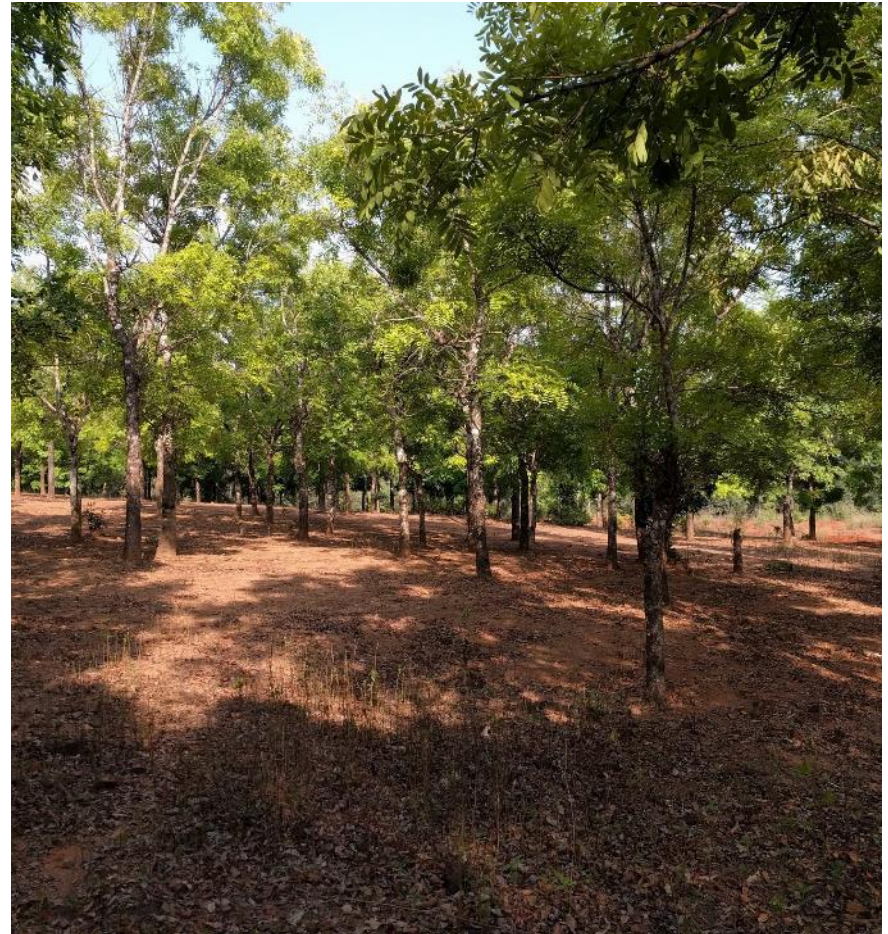


Food and Agriculture  
Organization of the  
United Nations

ADVISORY COMMITTEE  
ON SUSTAINABLE  
FOREST-BASED  
INDUSTRIES (ACSFII)

This assessment, which is currently a collaboration between FAO, ACSFI, ITTO, and IUFRO, will answer the following questions:

- What is the current global industrial roundwood production from planted forests and plantations?
- Which genera are the most prevalent in planted forest and plantations (in terms of area)?
- What examples do we have (case studies) of sustainable increase in planted forest productivity of wood, and how was it achieved?



# Process



Food and Agriculture  
Organization of the  
United Nations

ADVISORY COMMITTEE  
ON SUSTAINABLE  
FOREST-BASED  
INDUSTRIES (ACSFI)

Design and  
survey  
preparation

Case studies  
produced in  
collaboration with  
the International  
Tropical Timber  
Organization

Survey to focal  
points in 53  
countries (source  
of 95% of global  
in. roundwood  
production)

Production of  
papers for  
presentation at  
the next World  
Forestry  
Congress with  
IUFRO and  
partners



Food and Agriculture  
Organization of the  
United Nations

ADVISORY COMMITTEE  
ON SUSTAINABLE  
FOREST-BASED  
INDUSTRIES (ACFSI)

# Thanks and closing thoughts

