

Guidelines for installing AquaCrop



▪ Standard procedure

Zipped files containing the executable program for installing AquaCrop can be downloaded from the FAO website:

<http://www.fao.org/nr/water/aquacrop.html>

1. Copy the zipped file to the PC;
2. Unzip; and
3. Run SETUP.EXE.

When running the installation file, a series of windows will pop up. By selecting 'Next >' in each of the windows, AquaCrop will be installed by default in a subfolder of the 'Program Folder' of the PC (which will be created when not available). For the standard version the default directory is: C:\Program Files\FAO\AquaCrop

▪ Windows Vista and Windows 7

Installing AquaCrop according to the standard procedure will create problems with Windows Vista and Windows 7 since these versions no longer allow programs to write in its 'Program Files' folder. Consequently the normal operation of AquaCrop is blocked since storing input data and writing results require a constant and free access to the 'Program Files' folder.

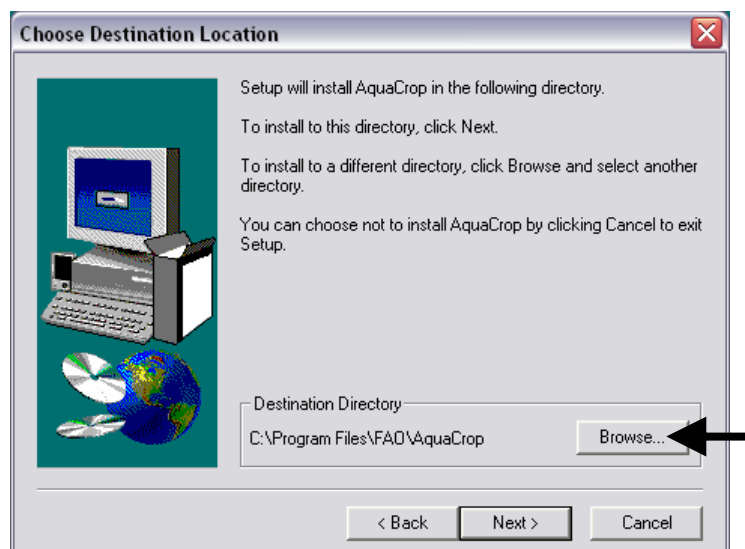


Figure 1.

The 'Choose Destination Location' window of the installation program of AquaCrop

The solution consists in specifying another directory than the default destination directory when installing the software. Therefore:

1. Select 'Browse...' in the '*Choose Destination Location*' window (Fig. 1);
2. Specify another directory than the default (e.g. C:\FAO\AcuaCrop)
3. Click 'Next >' to continue the installation at the specified location.

▪ **64-bit PC**

Notwithstanding there is no AquaCrop version compatible with 64-bit PCs, an elegant solution consists in installing a 'Virtual PC' (2007). This is a free program from MicroSoft. Once installed, an operating system (such as XP) and subsequently AquaCrop have to be installed on the Virtual PC. AquaCrop can run in that environment. It is a simple solution, often done for software that is not compatible with a 64-bit system.

Another possibility is to install AquaCrop on a regular 32-bit PC and to copy the whole folder with its subfolders to the 64-bit PC. Experience shows that this work as well.

▪ **Once installed**

When AquaCrop is properly installed, you will find in the AquaCrop directory:

- the AquaCrop executable file (AquaCrop.EXE);
- some files with extension PAR (these files contain selected settings for program parameters);
- the default crop and soil file;
- the list of soil characteristics for default soil types (Soils.DIR);
- a DATA subdirectory, with the calibrated and validated crop files by FAO and some examples files with environmental and management data (climate, soil, irrigation and filed management, ...);
- an OUTP subdirectory, where simulation results will be stored by default;
- a SIMUL subdirectory, with the Mauna Loa CO2 file.